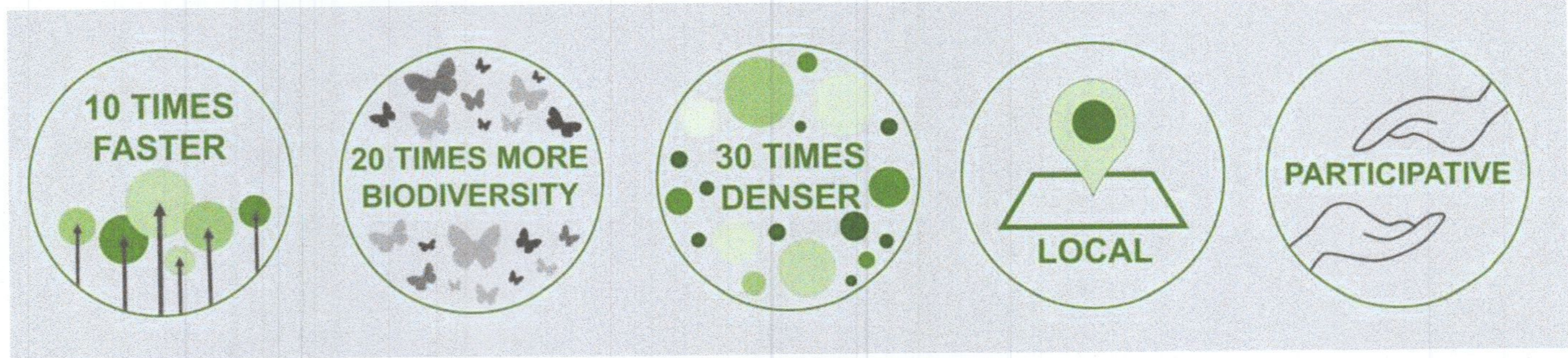
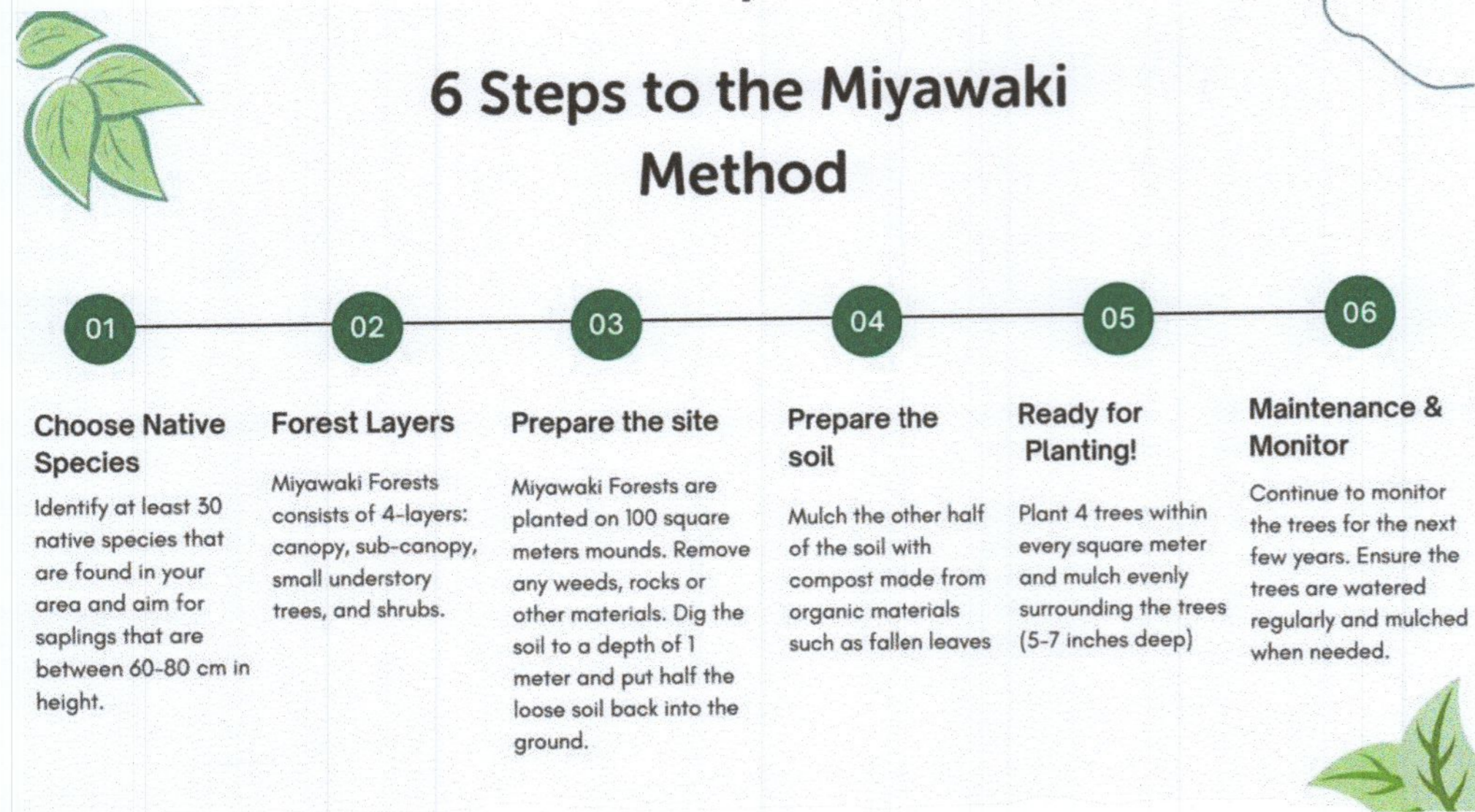


Miyawaki Planting
 To the west and north of the designated school site an area of 4,310sq/mtr has been proposed for the planting of a urban woodland using the Miyawaki method.
 This is divided across three parcels of 1,156 Sq/mtr, 1,652 Sq/mtr, 1,502 Sq/mtr.
 See Landscape Plan LP-01-PP for locations.



Miyawaki Planting, images of selected native planting species



Image 1. Lonicera periclymenum Image 2. Rosa canina

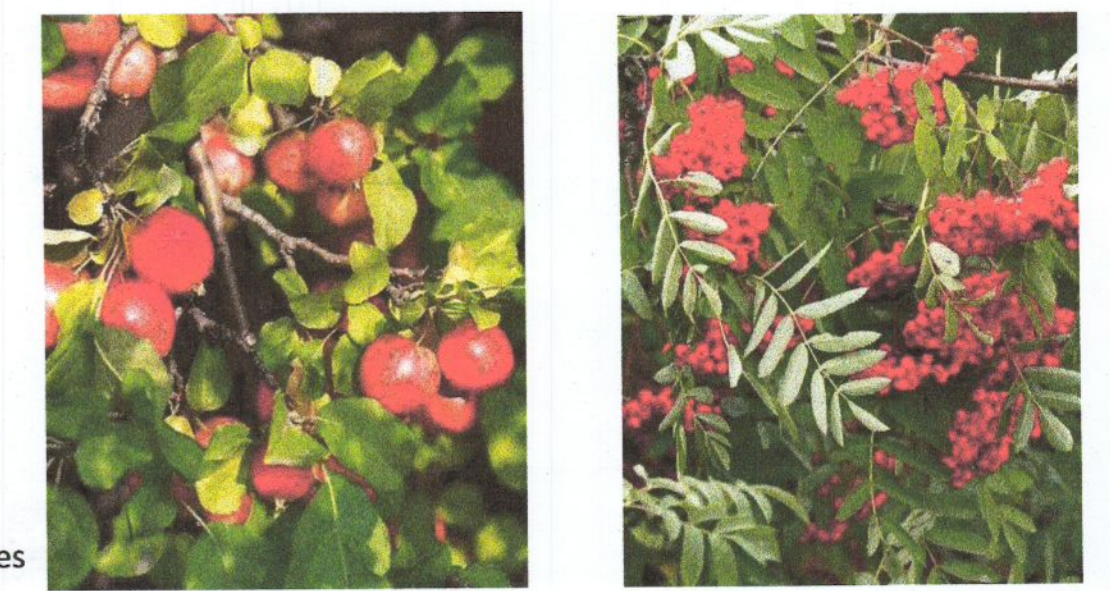


Image 3. Malus sylvestris Image 4. Sorbus aucuparia



Image 5. Prunus padus Image 6. Viburnum europaeus

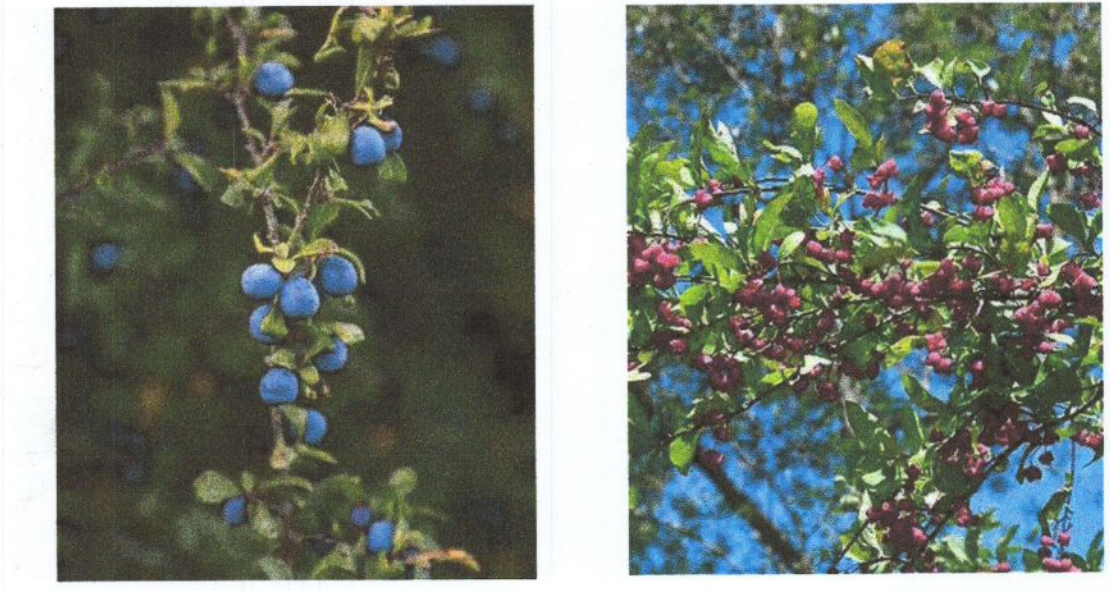


Image 7. Prunus spinosa Image 8. Euonymus europaeus



Image 9. Rubus fruticosus Image 10. Frangula alnus

Miyawaki Planting, proposed planting species

- Alnus glutinosa
- Arbutus unedo
- Malus sylvestris (Image 3.)
- Corylus avellana
- Fagus sylvatica
- Vaccinium myrtillus
- Betula pubescens
- Betula pendula
- Prunus spinosa
- Rubus fruticosus (Image 9.)
- Frangula alnus (Image 10.)
- Prunus avium
- Prunus padus (Image 5.)
- Prunus spinosa (Image 7.)
- Pinus sylvestris
- Sorbus hibernica
- Euonymus europaeus (Image 8.)
- Sambucus nigra
- Ulex europaeus
- Viburnum opulus
- Crataegus monogyna
- Corylus avellana
- Ilex aquifolium
- Lonicera periclymenum (Image 1.)
- Hedera helix
- Ligustrum vulgare
- Rosa canina (Image 2.)
- Sorbus aucuparia (Image 4.)
- Sorbus aria
- Salix fragilis
- Salix caprea
- Salix cinerea
- Salix alba
- Viburnum europaeus (Image 6.)

Miyawaki Planting, steps 01-06

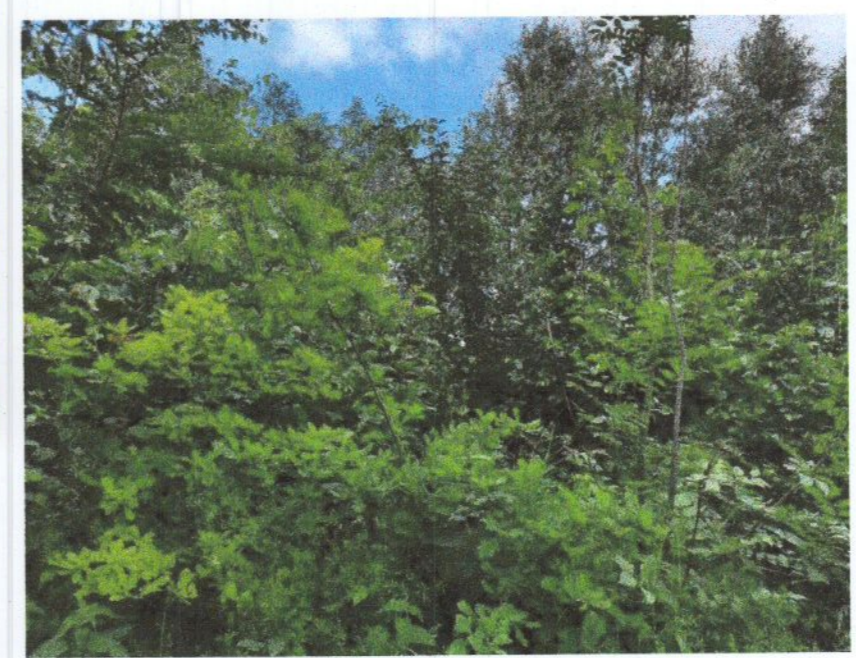


May 2018 June 2021

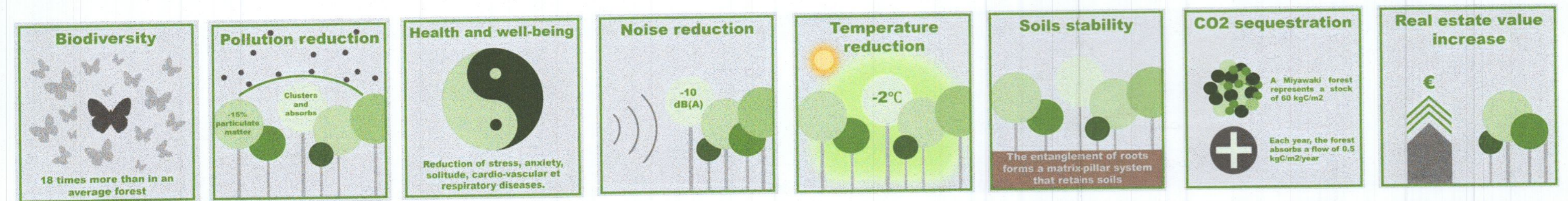
3 years old urban forest in a school created with the Miyawaki method



The forest floor



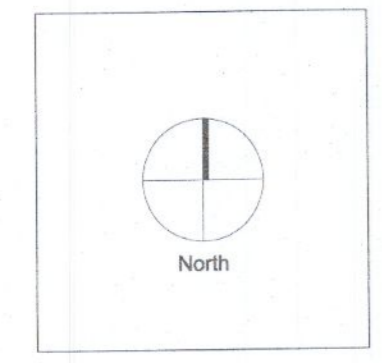
A rich and dense ecosystem



The advantages of Miyawaki Planting to the surrounding environment.



Rev.	Date	Notes
01	2022-09-21	Revised planting species mix



General Notes

Doyle & O'Troithigh Landscape Architecture

Project Name Aderrig Phase 3	Drawing Name Miyawaki Planting Details
Status Planning	Drawing No LD-07-PP
Project No 17-064	Revision No 00
Scale NTS	Drawn By KGR
Date 15/09/2022	Checked By DOT

Linda Doyle
 Director
 +353 (0)87 287 4188
 linda@doyle-otroithigh.com

Duailín O'Troithigh
 Director
 +353 (0)87 287 4188
 duailin@doyle-otroithigh.com

Office Address
 Pembroke House
 25-27 Upper Pembroke St
 Dublin 7

Contact
 mail@doyle-otroithigh.com
 +353 (0)1 608 7182