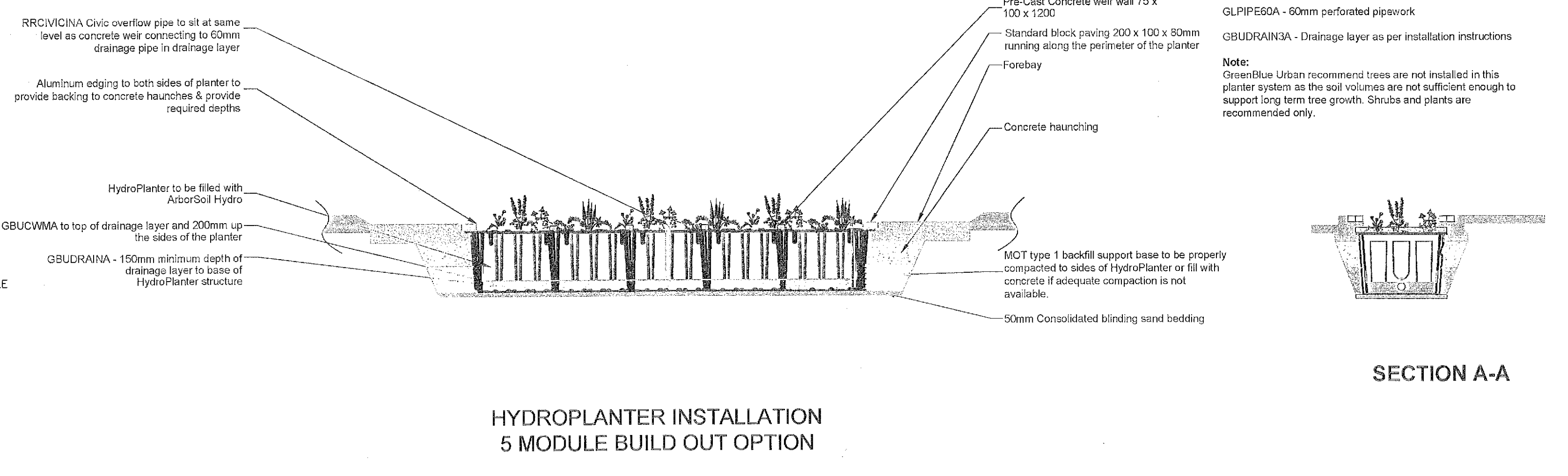
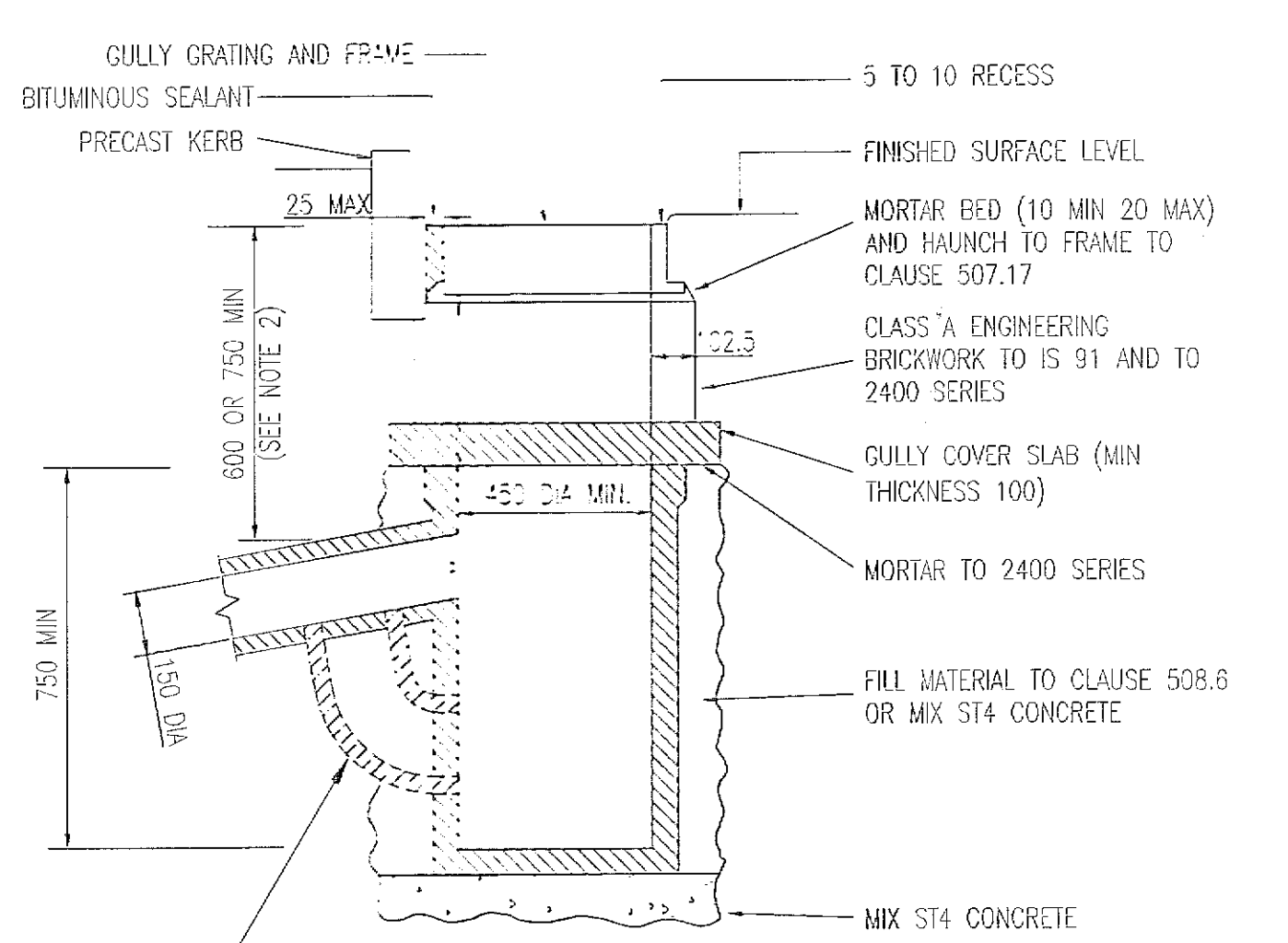


- NOTES:
1. ALL DIMENSIONS ARE IN MILLIMETRES EXCEPT WHERE STATED.
  2. THE MINIMUM DEPTH FROM THE TOP OF THE GRATING TO THE TOP OF THE GULLY OUTLET IS TO BE 750 WHEN THE CONNECTING PIPE IS UNDER A CARROUSEWAY OR A HARD SHOULDER AND 600 ELSEWHERE.
  3. PRECAST CONCRETE GULLIES AND COVER SLABS SHALL BE TO IS EN 1917 OR BS 5911- 6.
  4. FOR DETAILS OF GULLY GRATING SEE DRAWING No RCD/500/16.
  5. WHERE A GULLY HAS A TRAP THE STOPPERS SHALL COMPLY WITH THE REQUIREMENTS OF BS 5911-4 AND IS EN 1917.
  6. FOR DETAILS OF GULLY GRATINGS REFER TO APPENDIX 9/1.



Package includes the following GreenBlue Urban products per typical 5 module system:

- GBUHPSM1A HydroPlanter Starter module - 1000mm x 1200mm x 80mm - 1 No.
- GBUHPCM1A HydroPlanter Continuation module - 1000mm x 1200mm x 80mm - 3 No.
- GBUHPEM1A HydroPlanter End module - 1430mm x 1200mm x 80mm - 1 No.

ArborSoil Hydro to fill HydroPlanter - allow 3.1 cu. m per planter. Additional allowance needs to be made for settlement.

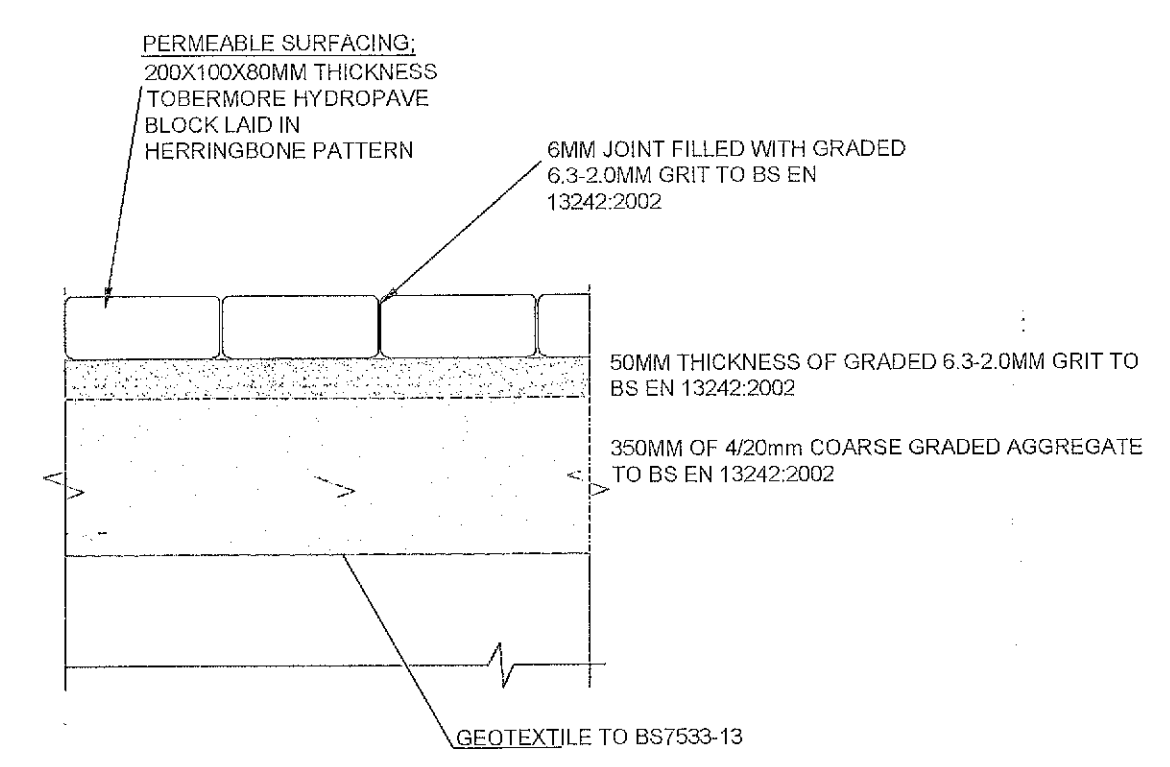
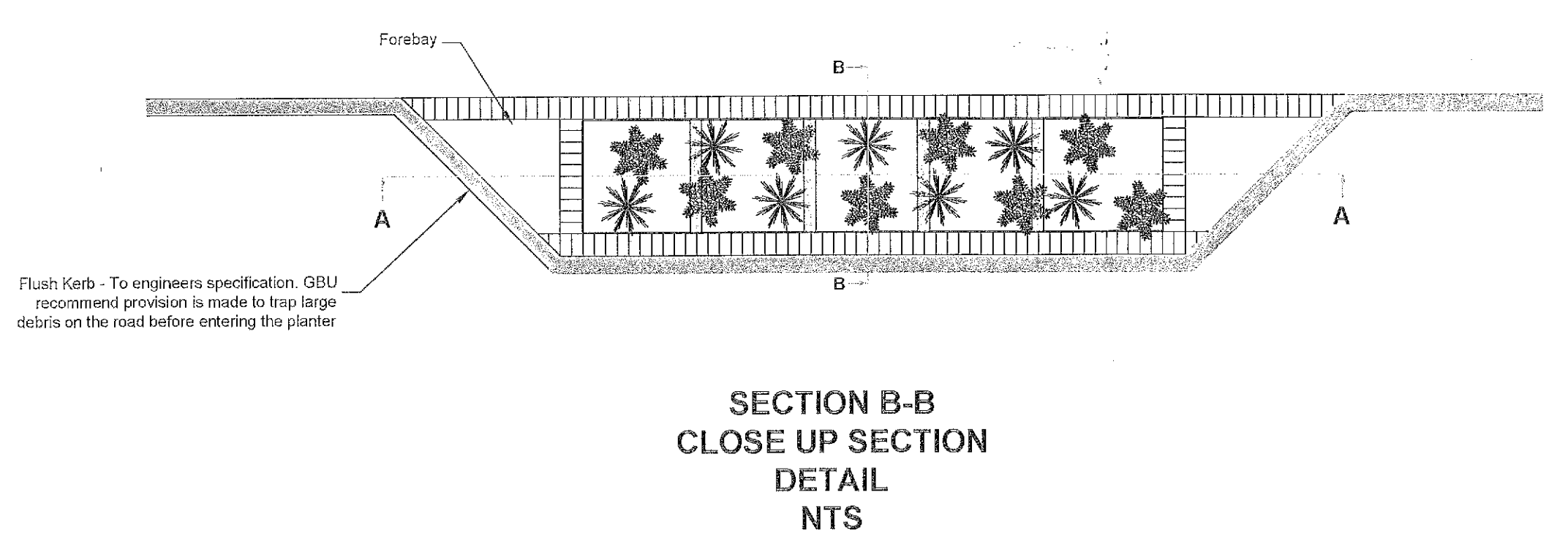
RootStart Mycorrhiza - apply to planter at time of planting in accordance with manufacturer's recommendations - allow 200g per planter.

RRCVICINA RootRain Civic inlet

GLPIPE60A - 60mm perforated pipework

GBUDRAIN3A - Drainage layer as per installation instructions

Note: GreenBlue Urban recommend trees are not installed in this planter system as the soil volumes are not sufficient enough to support long term tree growth. Shrubs and plants are recommended only.



Rev	Revision description	Date	Drawn	Design	Check	Job Title:	Client:	Scale:
						<b>DEVELOPMENT AT 1-2 BALLYMOUNT ROAD LOWER, DUBLIN 12</b>	<b>PAINTWORLD LTD.</b>	<b>AS SHOWN</b>
						<b>DRAINAGE DETAILS</b>	Drawing number:	Date:
							<b>5342/C102</b>	<b>SEP'22</b>
A	PLANNING ISSUE	SEP 2022	AA	AA	TON			

4 Bridgecourt Office Park  
Walkinstown Avenue  
Dublin 12  
Tel / Fax: 01-426 4883 / 01-429 7971  
email: mail@once.co  
www.once.co

**once**  
consultant engineers