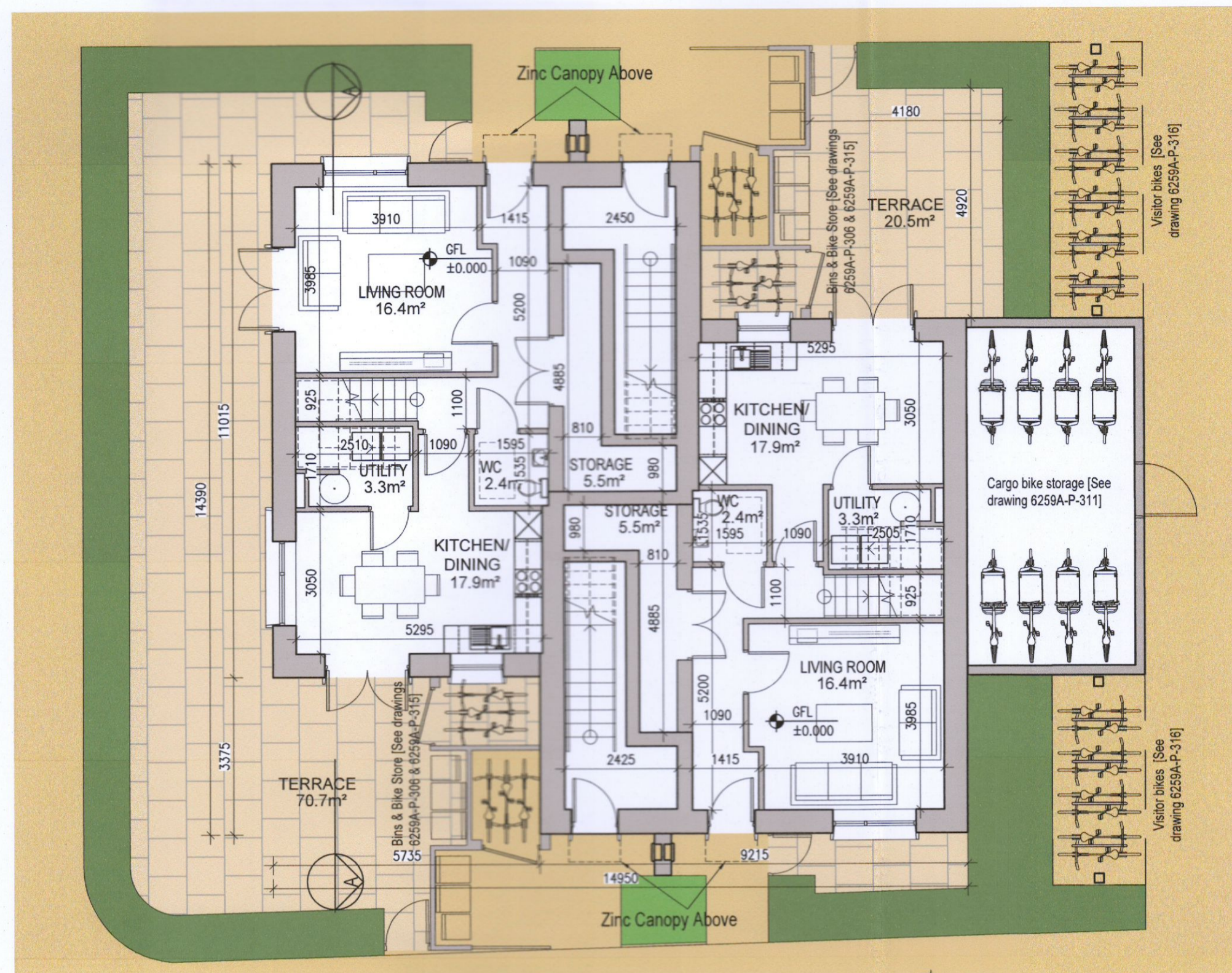
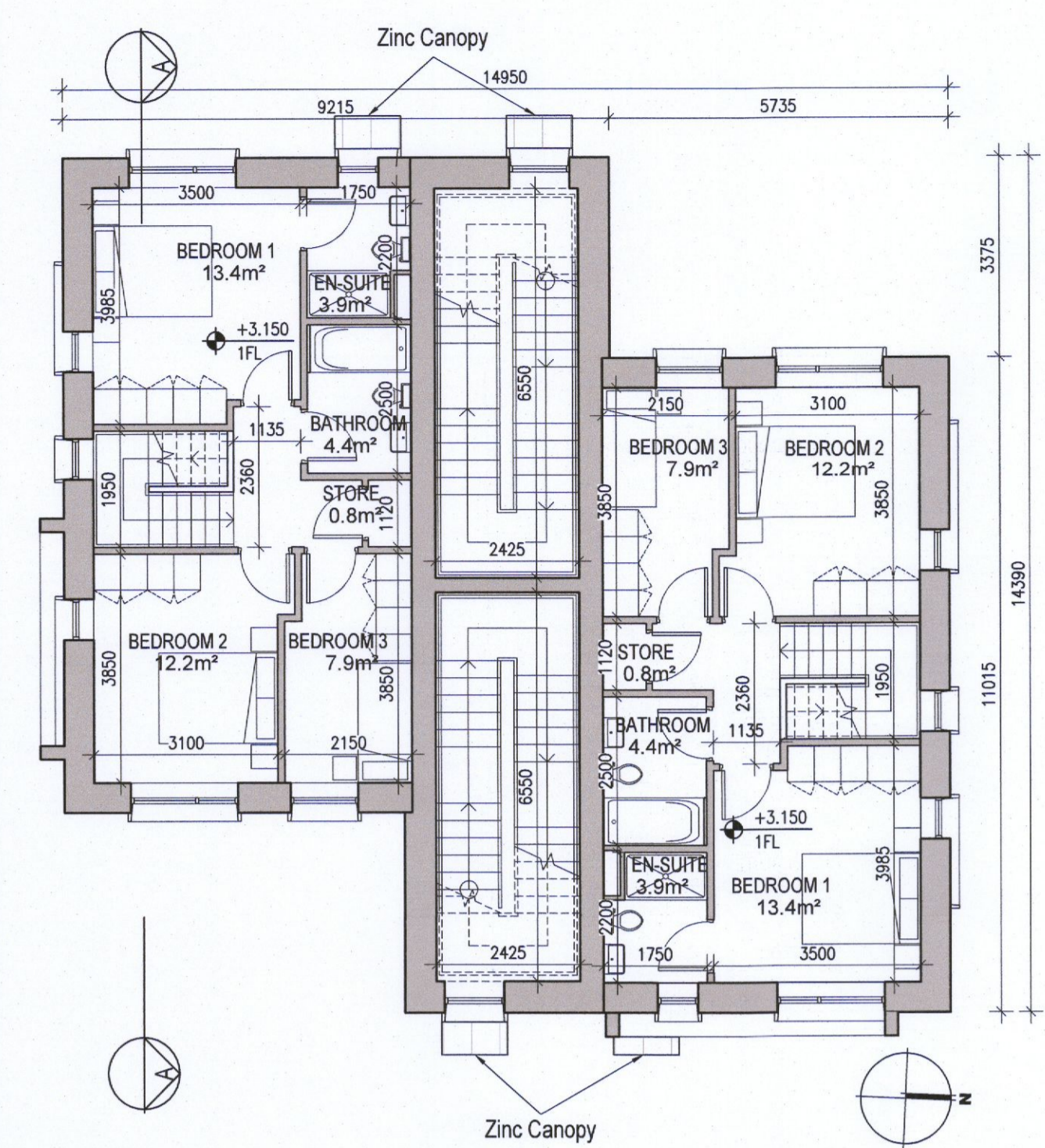


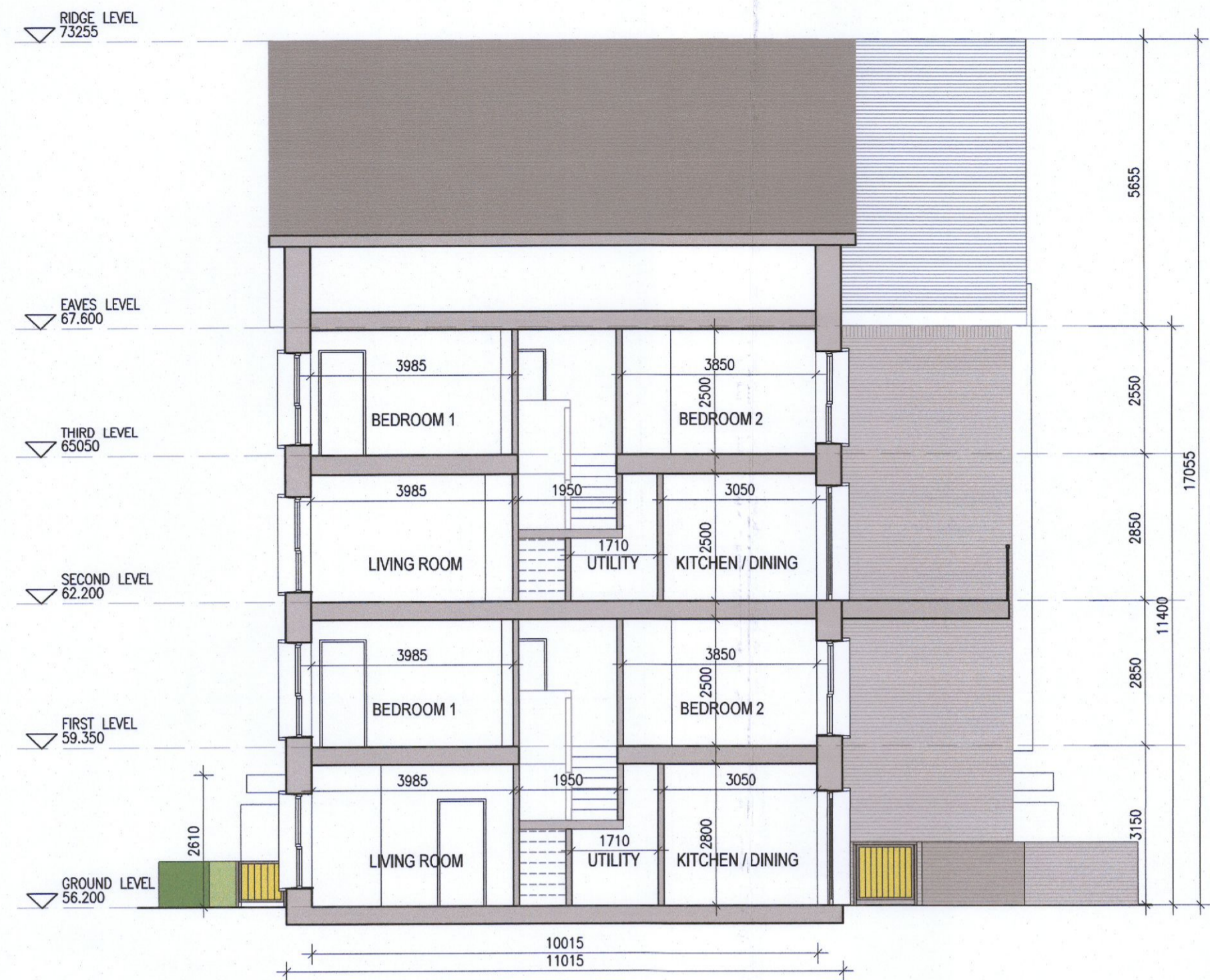
DUPLEX TYPE H1/H2



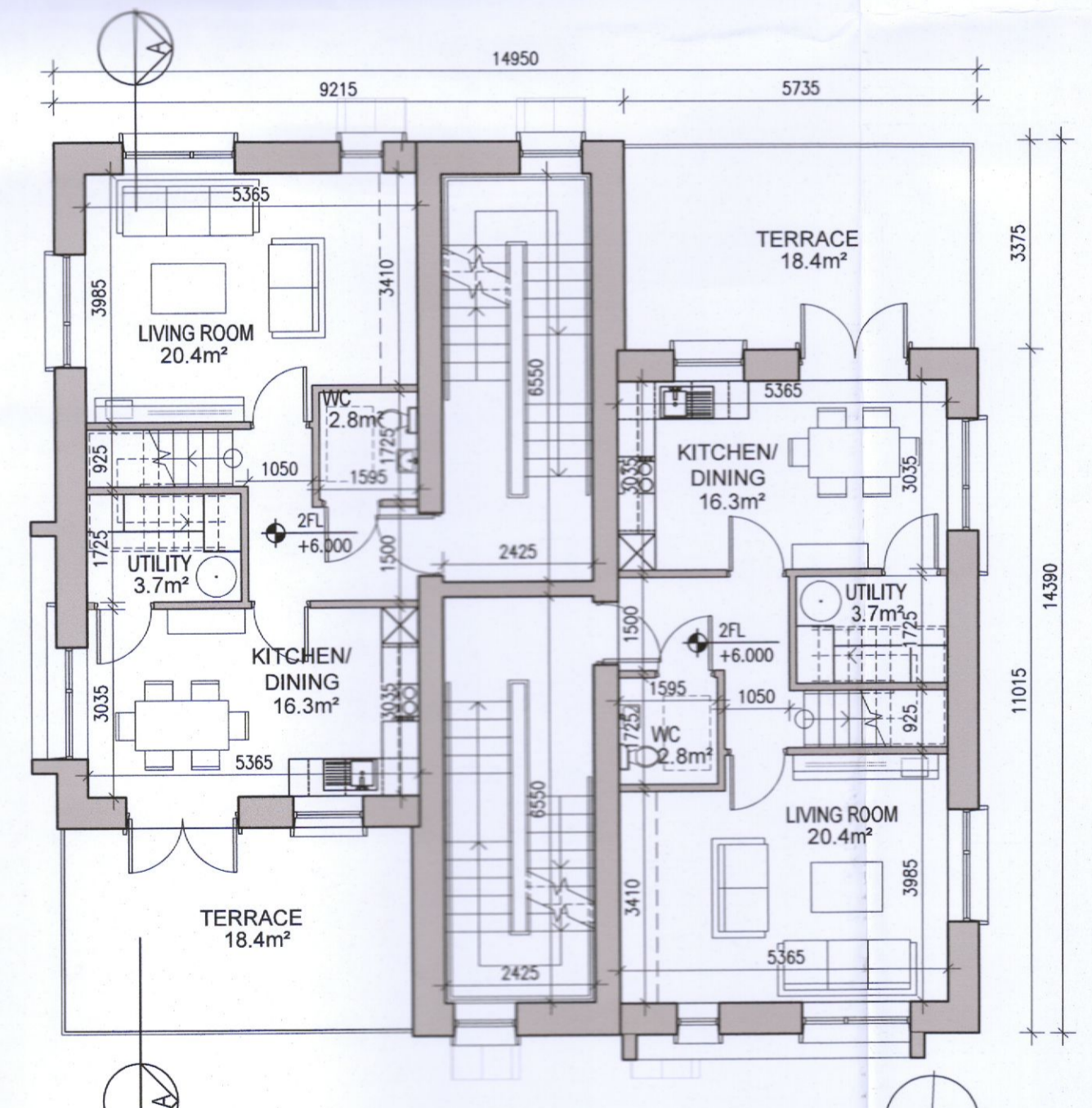
01 Ground Floor Plan [H1]
1:100@A1



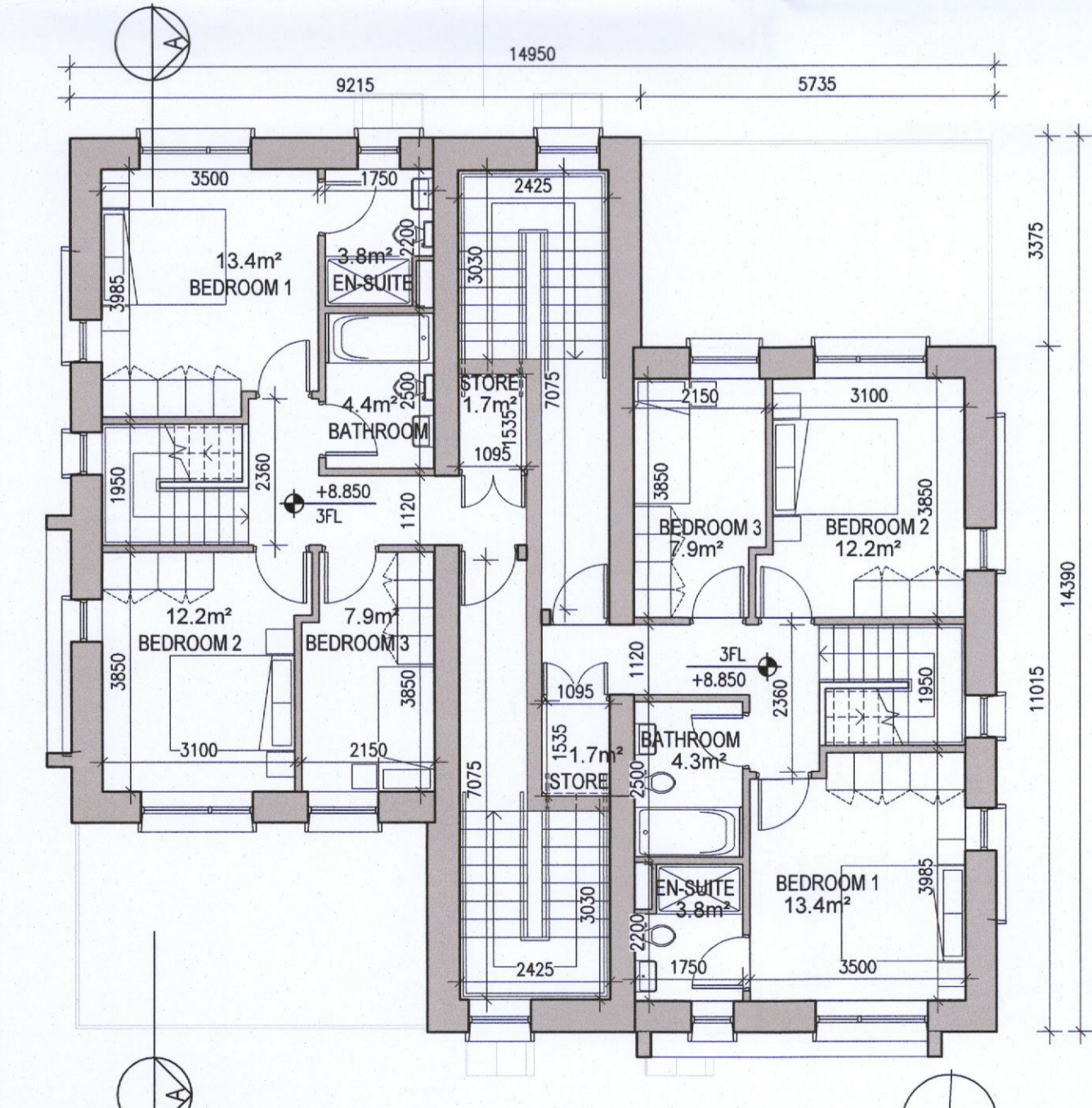
02 First Floor Plan [H1]
1:100@A1



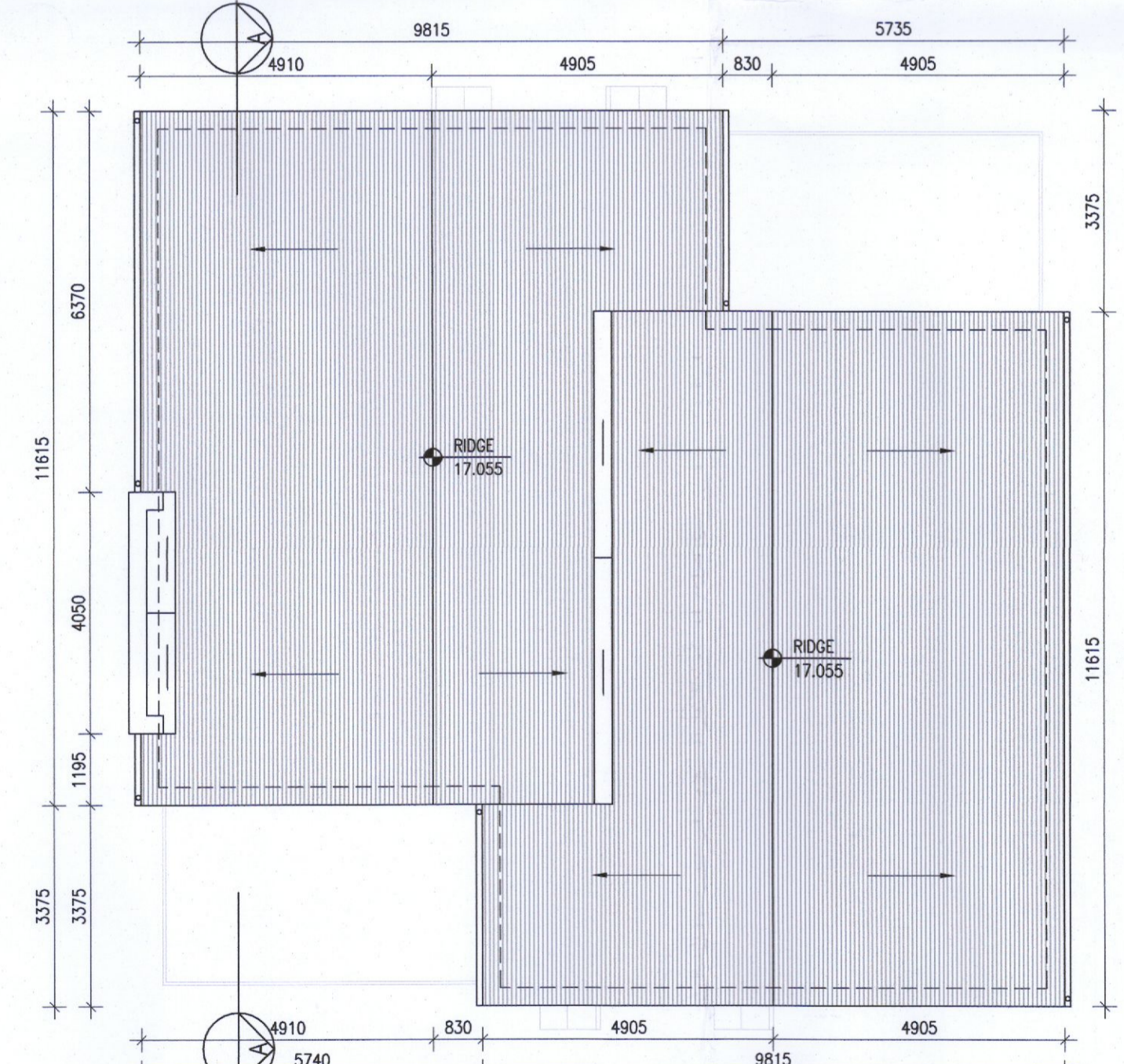
06 Typical Section [A-A]
1:100@A1



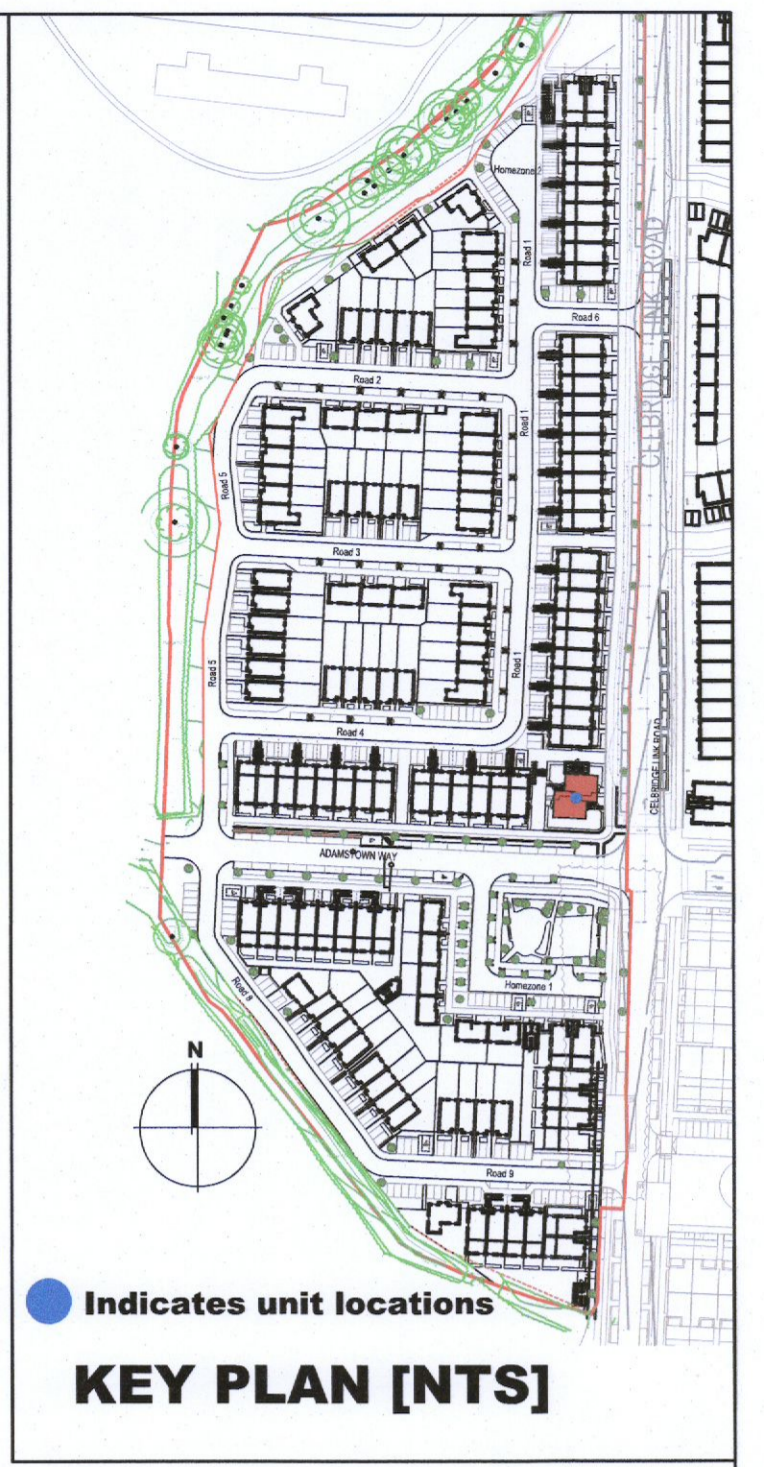
03 Second Floor Plan [H2]
1:100@A1



04 Third Floor Plan [H2]
1:100@A1



05 Roof Plan
1:100@A1



HOUSE TYPES

HOUSE TYPES	No. OF UNITS
Type A1/A2 - 3 bed	16
Type B1/B2 - 3 bed	28
Type C1/C2/C3 - 3 bed	15
Type D - 4 bed	3
Type E1/E2 - 4 bed	7
Type K1/K2 - 4 bed	6
	75

DUPLEX

DUPLEX	No. OF UNITS
Type F1 - 2 bed	3
Type B1/B2 - 3 bed	3
Type F2 - 2 bed	1
Type F3 - 2 bed	6
Type G1 - 2 bed	33
Type G2 - 2 bed	2
Type G3 - 2 bed	7
Type H1/H2 - 3 bed	2
Type J1 - 2 bed	9
Type J2 - 2 bed	3
	132
TOTAL NO. OF UNITS	207

EXTERNAL FINISHES

WALLS: PAINTED SAND / CEMENT RENDER OR PROPRIETARY PRECOLOURED RENDER FINISH SELECTED BRICKWORK WHERE INDICATED ON DRAWINGS

WINDOWS: SELECTED PROPRIETARY DOUBLE / TRIPLE GLAZED WINDOW SYSTEM WITH FRAMES TO APPROVED COLOUR OBSCURED GLAZING TO BATHROOMS AND EN-SUITES.

DOORS: SELECTED PROPRIETARY DOORS AND GLAZED SIDE SCREENS TO APPROVED COLOUR.

RAINWATER GOODS: uPVC OR POWDER COATED METAL GUTTERS AND RAINWATER PIPES TO SELECTED COLOUR.

MAIN ROOF: CONCRETE ROOF TILES IN SELECTED COLOUR.

LOW LEVEL PROJECTION: ZINC CANOPY TO ENTRANCE OF UNITS

OTHER ITEMS: uPVC OR POWDER COATED METAL FASCIAS, SOFFITS AND BARGE BOARDS PAINTED MILDSTEEL RAILINGS AND BALUSTRADES

H1 [3 Bed] - Ground floor area	60.9 m ²
First floor area	53.7 m ²
Total Floor Area (H1):	114.7 m²
H2 [3 Bed] - Second floor area	53.7 m ²
Third floor area	57.6 m ²
Total Floor Area (H2):	111.3 m²

REFER TO LANDSCAPE ARCHITECT'S DRAWINGS FOR ALL LANDSCAPING DETAILS INCLUDING BOUNDARY TREATMENTS

DUPLEX TYPE H1/H2

- Notes**
- Copyright Reserved
 - Work to figured dimensions only. Do not scale drawing.
 - The contractor is responsible for checking all levels and dimensions on site and shall refer all discrepancies to the Architect
 - Where appropriate, for details of r.c. structure, or mechanical and electrical details, see Engineers drawings
 - Proprietary items shall be fixed in strict accordance with manufacturers instructions.
 - Sizes of proprietary items shall be checked with manufacturer.
 - The contractor shall be responsible for the coordination of structure, finishes and services.

Issue Status

Progress	
Planning Application	
Fire Cert	
Disability Cert	
Tender	
Construction	
As Built	
Information Only	

No.	Date	Revision	Initials
01	14.10.2022	ISSUED FOR PLANNING	ED

Project
Aderrig Phase 3 Adamstown SDZ Residential Development

Drawing Title
Duplex Type H1/H2 (Landmark Building) - Plans, Section

Drawing No
6259A-P-213

Scale 1:100@A1 **Rev** 01 **Drawn** IF, ED **Date** 14/10/22

6-7 HARCURT TERRACE, DUBLIN 2, IRELAND
+353-1-618 2400 +353-1-676 7385
www.bkd.ie

bkd architects
BURKE-KENNEDY DOYLE