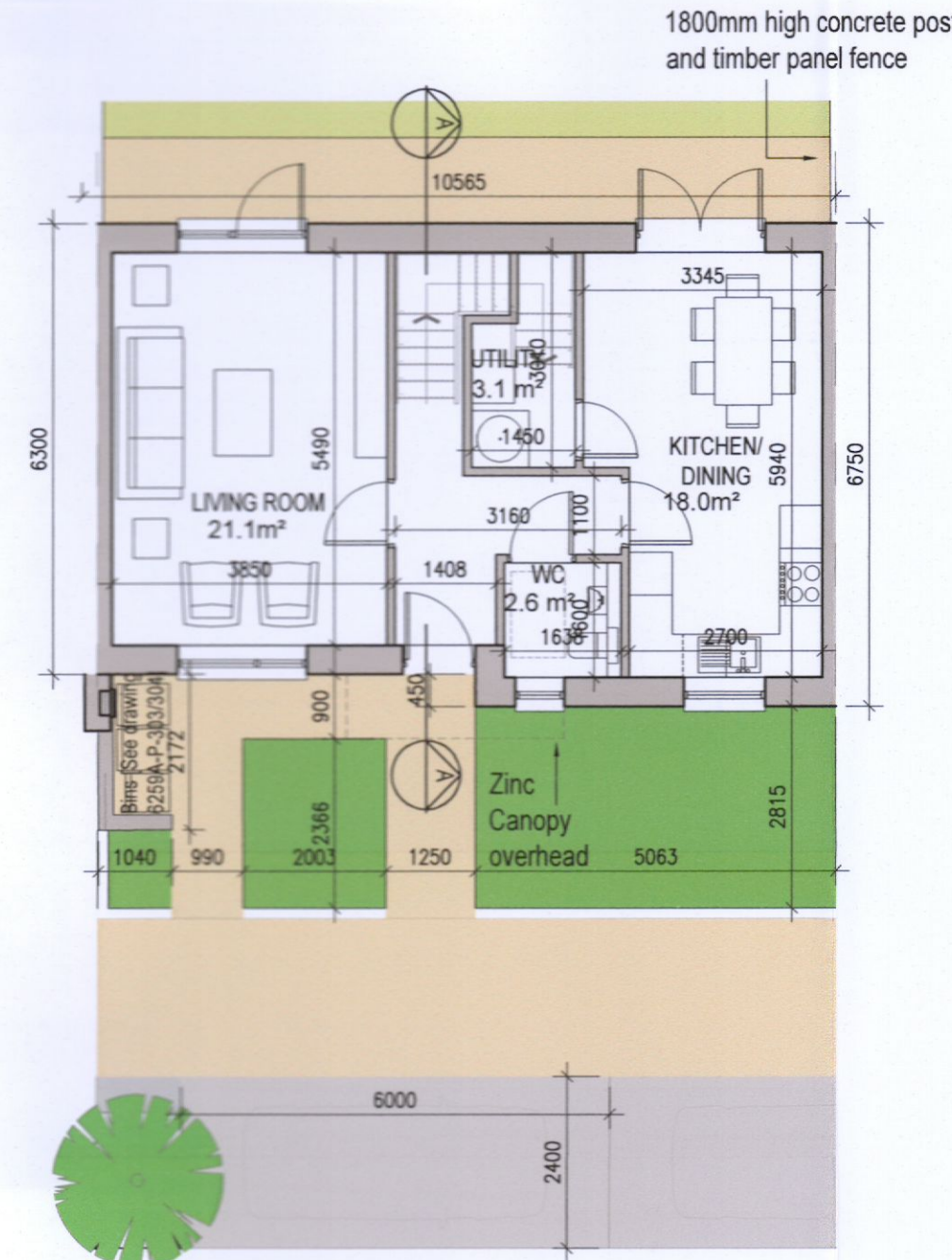
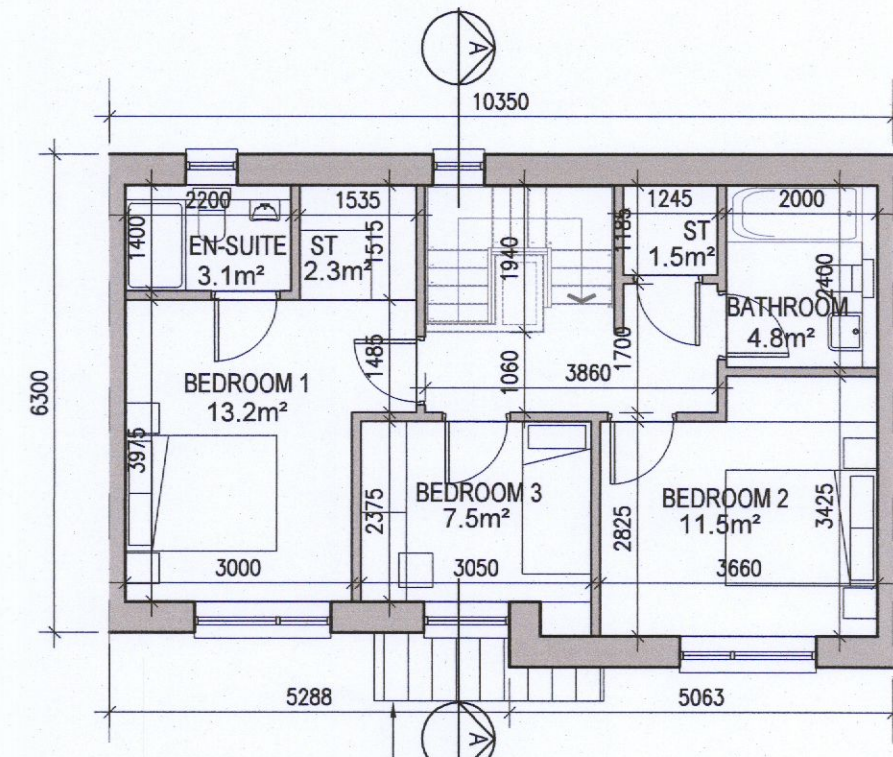


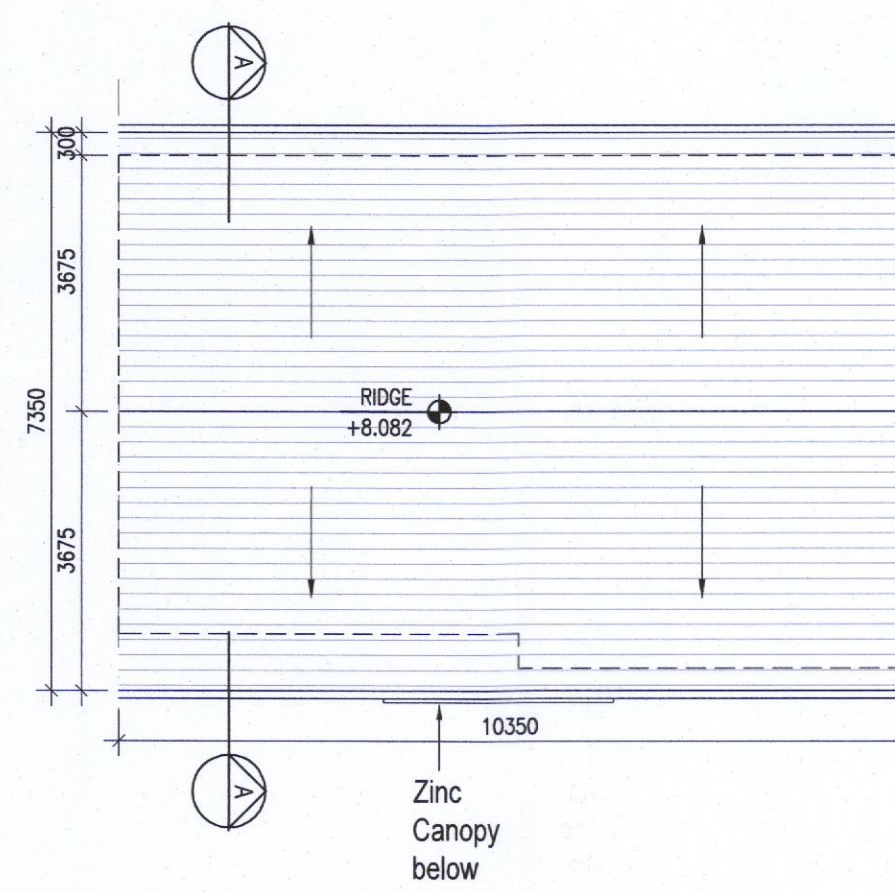
**HOUSE TYPE C1 HANDED**



01 Ground Floor Plan



02 First Floor Plan



03 Roof Floor Plan  
1:100@A1



**KEY PLAN [NTS]**

HOUSE TYPES	No. OF UNITS
Type A1/A2 - 3 bed	16
Type B1/B2 - 3 bed	28
Type C1/C2/C3 - 3 bed	15
Type D - 4 bed	3
Type E1/E2 - 4 bed	7
Type K1/K2 - 4 bed	6
	75

DUPLEX	No. OF UNITS
Type F1 - 2 bed	3
Type F2 - 2 bed	3
Type F3 - 2 bed	1
Type G1 - 2 bed	6
Type G2 - 2 bed	6
Type G3 - 2 bed	2
Type H1/H2 - 3 bed	7
Type J1 - 2 bed	2
Type J2 - 2 bed	9
	9
	3
	3
	132
TOTAL NO. OF UNITS	207

Parking layout varies. Refer to 6259A-P-003 & 6259A-P-010/011 for information



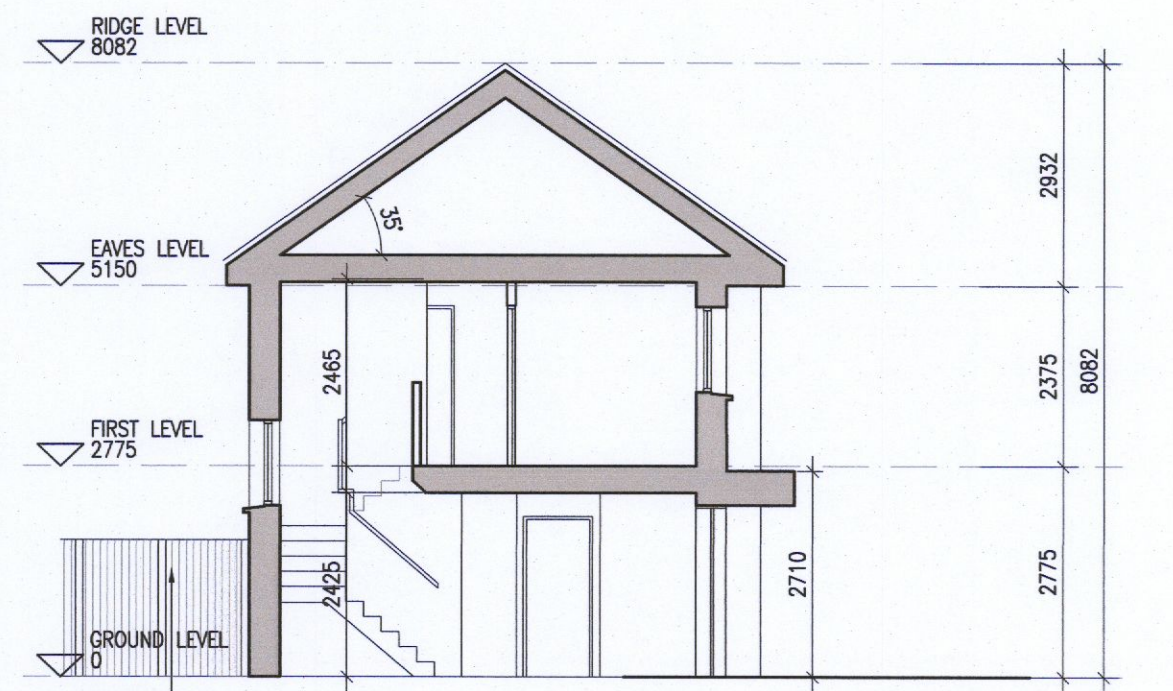
04 Front Elevation C1.1  
1:100@A1



05 Front Elevation C1.2  
1:100@A1



06 Rear Elevation  
1:100@A1



07 Section A-A  
1:100@A1

**EXTERNAL FINISHES**

- WALLS:** PAINTED SAND / CEMENT RENDER OR PROPRIETARY PRECOLOURED RENDER FINISH SELECTED BRICKWORK WHERE INDICATED ON DRAWINGS
- WINDOWS:** SELECTED PROPRIETARY DOUBLE / TRIPLE GLAZED WINDOW SYSTEM WITH FRAMES TO APPROVED COLOUR OBSCURED GLAZING TO BATHROOMS AND EN-SUITES.
- DOORS:** SELECTED PROPRIETARY DOORS AND GLAZED SIDE SCREENS TO APPROVED COLOUR.
- RAINWATER GOODS:** uPVC OR POWDER COATED METAL GUTTERS AND RAINWATER PIPES TO SELECTED COLOUR.
- MAIN ROOF:** CONCRETE ROOF TILES IN SELECTED COLOUR.
- LOW LEVEL PROJECTION:** ZINC CANOPY TO ENTRANCE OF UNITS
- OTHER ITEMS:** uPVC OR POWDER COATED METAL FASCIAS, SOFFITS AND BARGE BOARDS PAINTED MILDSTEEL RAILINGS AND BALUSTRADES

HOUSE TYPE C1  
Ground floor area 56.6m<sup>2</sup>  
First floor area 56.6m<sup>2</sup>  
Total Floor Area (3-bed unit): 113.1m<sup>2</sup>

**REFER TO LANDSCAPE ARCHITECT'S DRAWINGS FOR ALL LANDSCAPING DETAILS INCLUDING BOUNDARY TREATMENTS**

**HOUSE TYPE C1 HANDED**

**Notes**  
1. Copyright Reserved  
2. Work to figured dimensions only. Do not scale drawing.  
3. The contractor is responsible for checking all levels and dimensions on site and shall refer all discrepancies to the Architect.  
4. Where appropriate, for details of r.c. structures, or mechanical and electrical details, see Engineers drawings.  
5. Proprietary items shall be fixed in strict accordance with manufacturers instructions.  
6. Sizes of proprietary items shall be checked with manufacturer.  
7. The contractor shall be responsible for the coordination of structure, finishes and services.

Issue Status
Progress
Planning Application
Fire Cert
Disability Cert
Tender
Construction
As Built
Information Only

No.	Date	Revision	Initials
01	14.10.2022	ISSUED FOR PLANNING	BKD

Project	Aderrig Phase 3 Adamstown SDZ Residential Development
Drawing Title	House Type C1 (mid terrace) Handed-Plans, Elevation, Section
Drawing No	6259A-P-108
Scale	1:100@A1
Rev	01
Drawn	IFJ
Date	OCT 2022

6-7 HARPCOURT TERRACE, DUBLIN 2, IRELAND  
+353-1-616 2000 | +353-1-676 7985  
architecture@bkd.ie  
www.bkd.ie  
**bkd architects**  
BURKE-KENNEDY DOYLE