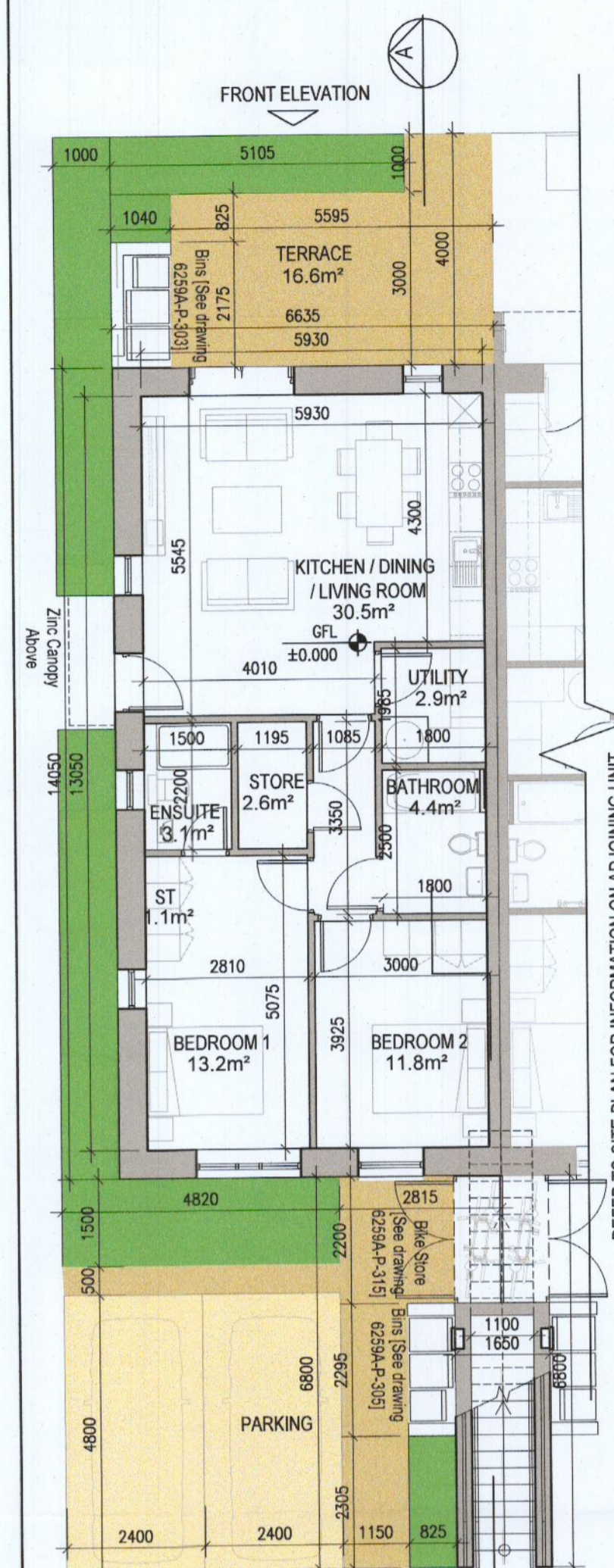
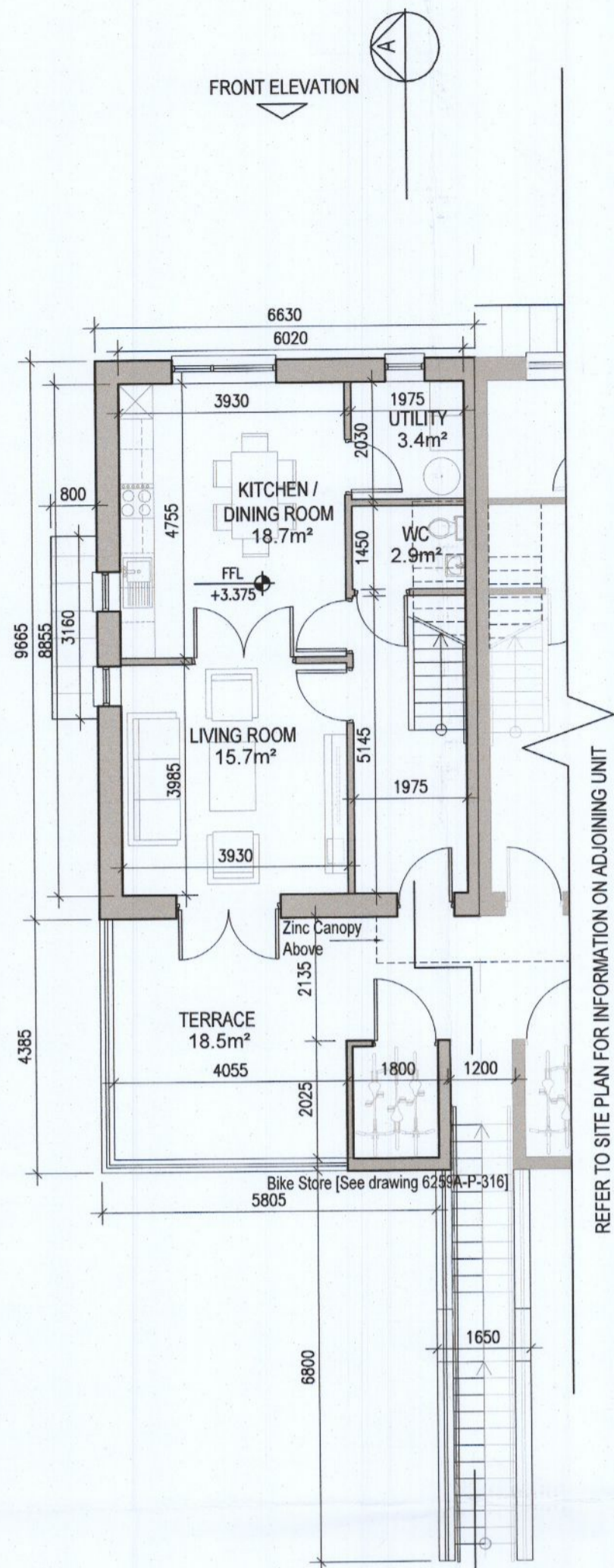


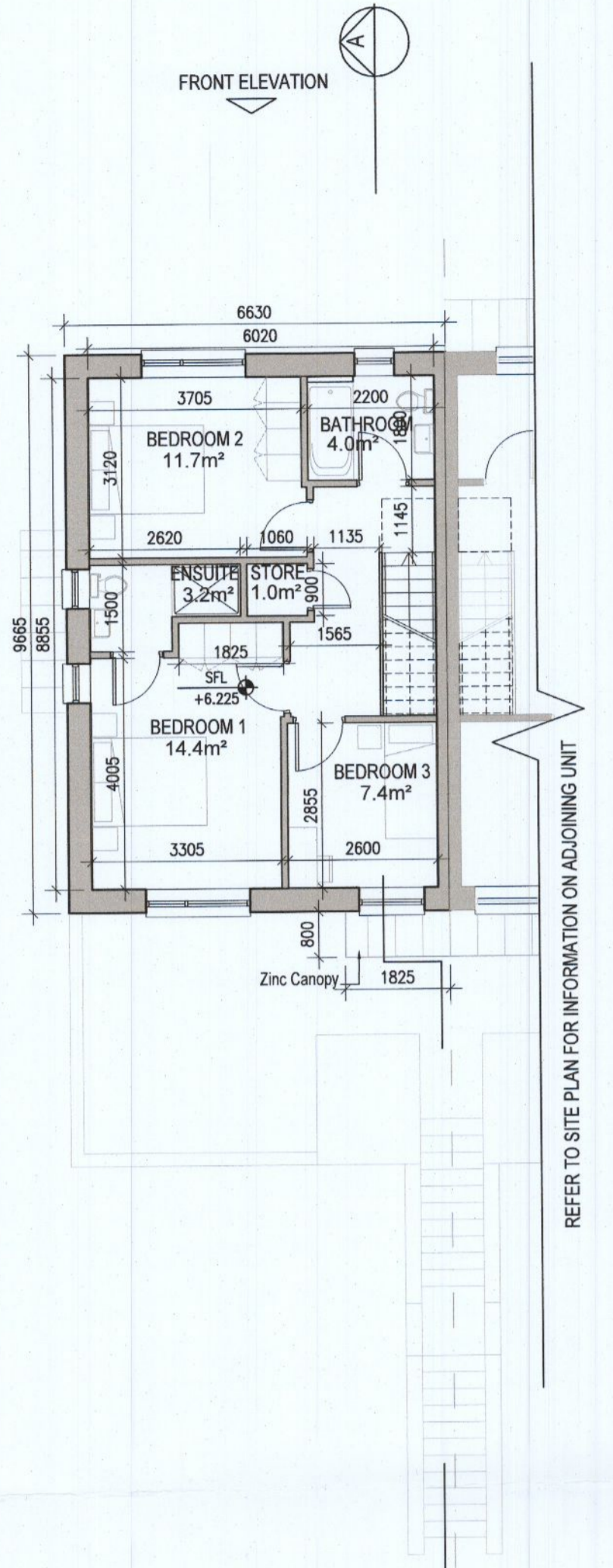
DUPLEX TYPE G3 HANDED



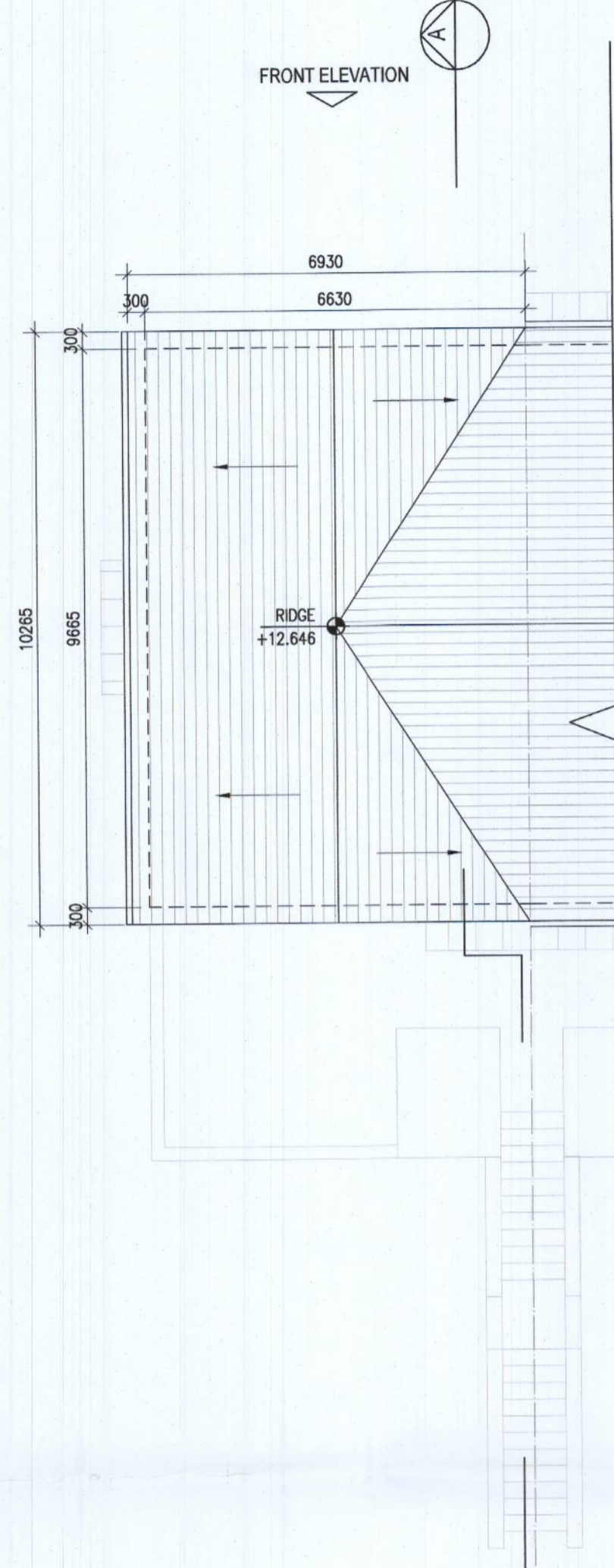
01 Ground Floor Plan [G3.A]



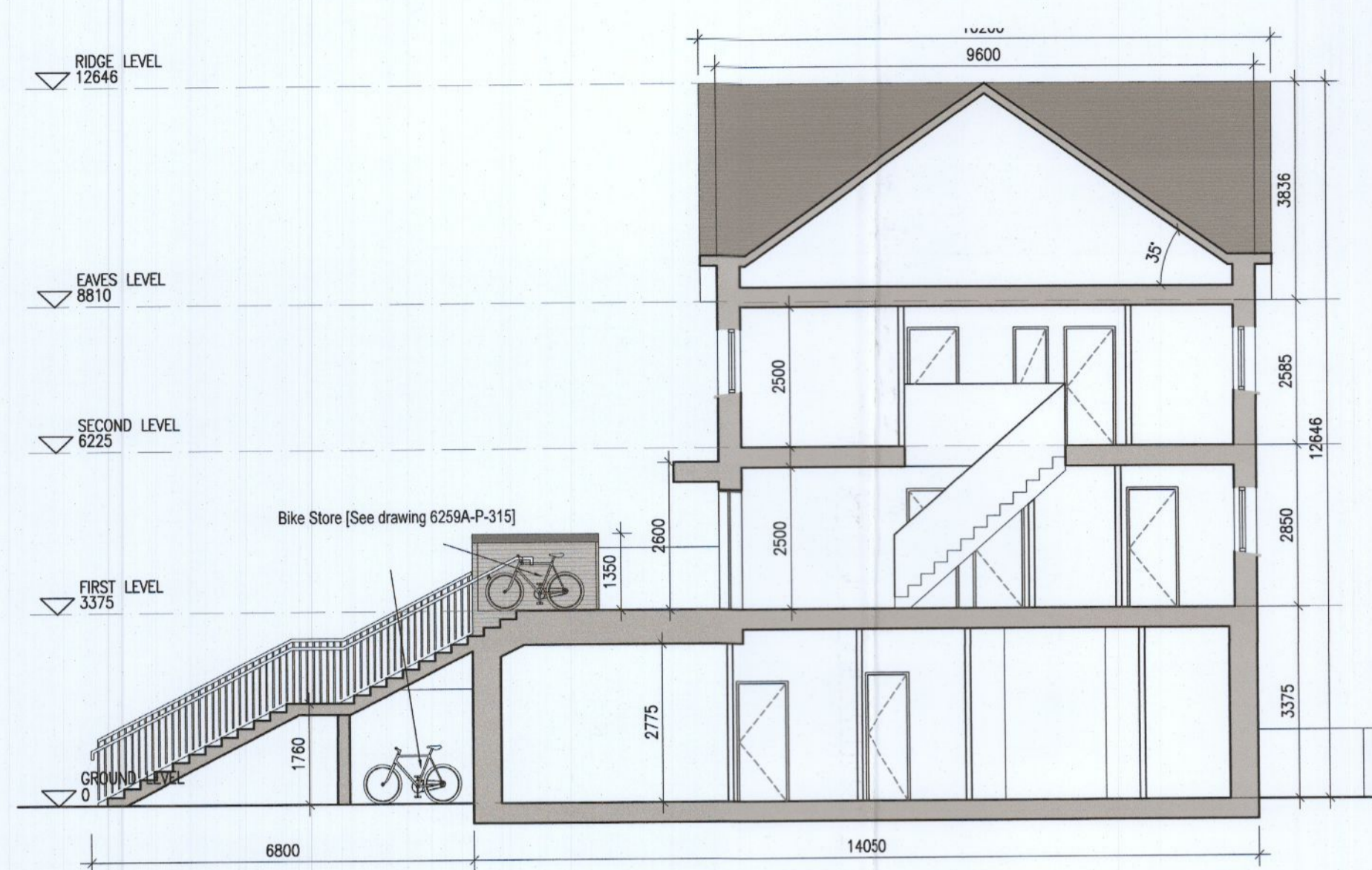
02 First Floor Plan [G3.B]



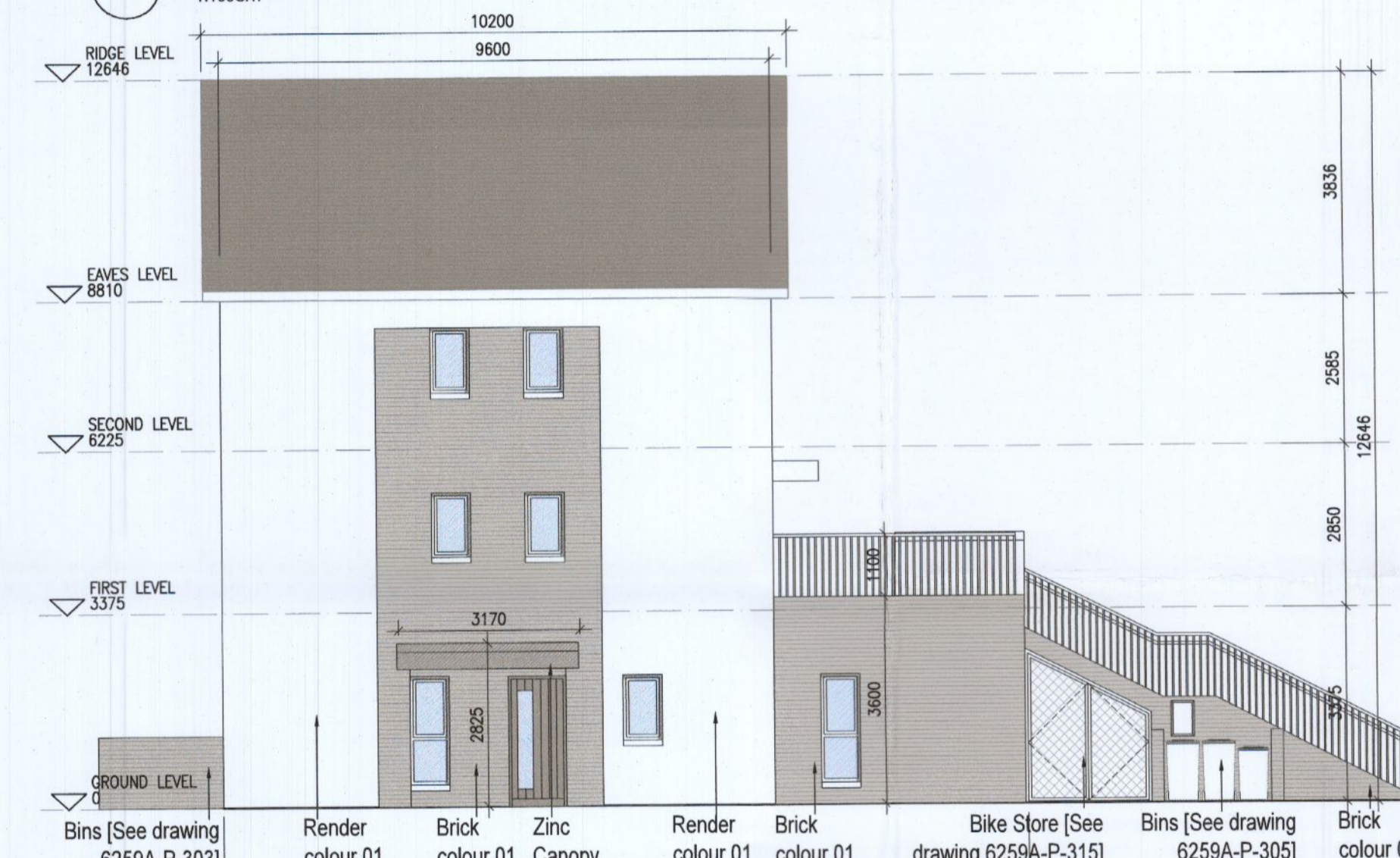
03 Second Floor Plan [G3.B]



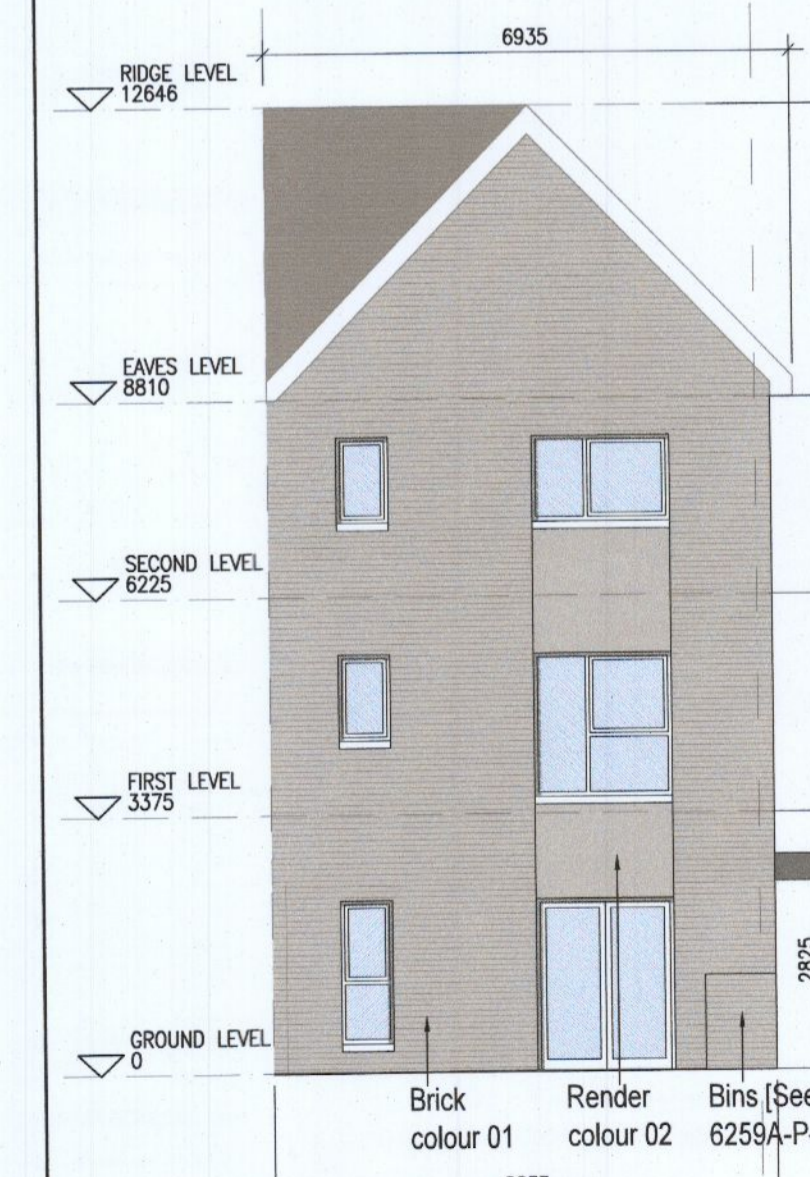
04 Roof Floor Plan



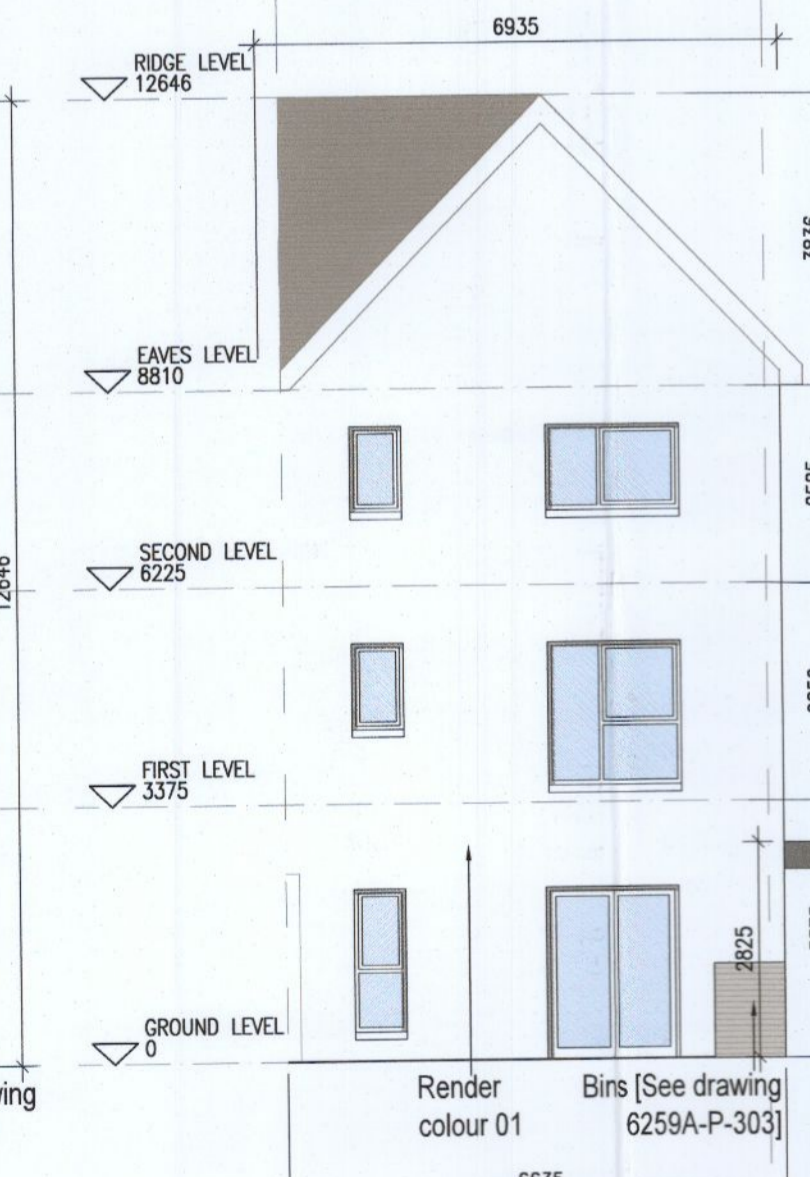
05 Typical Section [A-A]



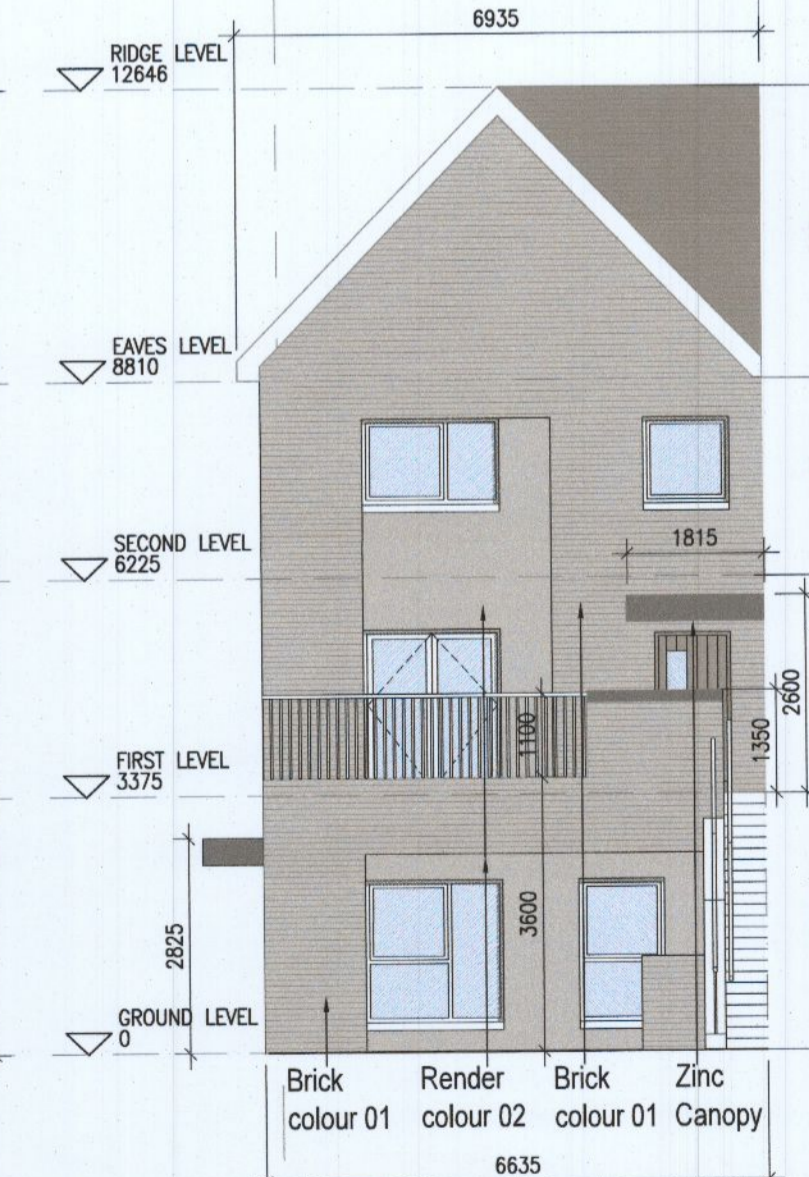
06 Side Elevation G3.2



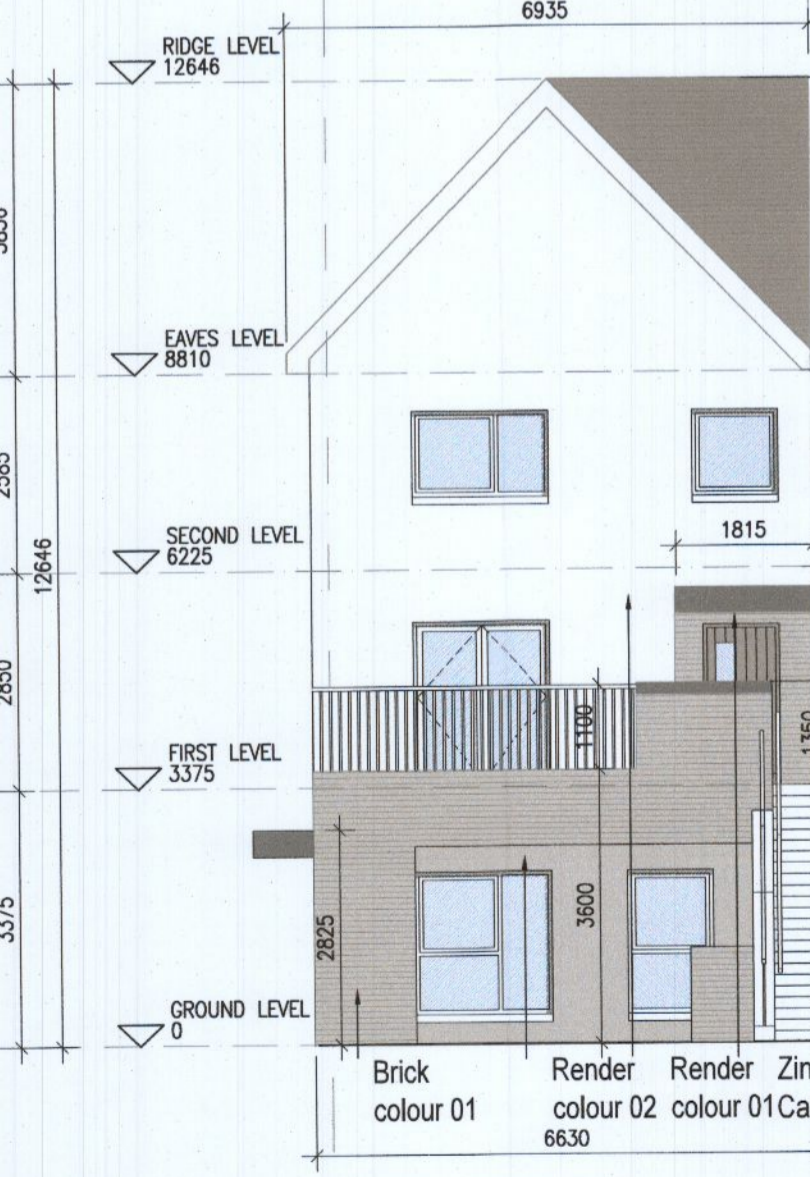
08 Front Elevation G3.1



09 Front Elevation G3.2



10 Rear Elevation G3.1



11 Rear Elevation G3.2



07 Side Elevation G3.1



Indicates unit locations
KEY PLAN [NTS]

HOUSE TYPES	No. OF UNITS
Type A1/A2 - 3 bed	16
Type B1/B2 - 3 bed	28
Type C1/C2/C3 - 3 bed	15
Type D - 4 bed	3
Type E1/E2 - 4 bed	7
Type K1/K2 - 4 bed	6
	75

DUPLEX	No. OF UNITS
Type F1 - 2 bed	3
Type F2 - 2 bed	1
Type F3 - 2 bed	6
Type G1 - 2 bed	33
Type G2 - 2 bed	2
Type G3 - 2 bed	7
Type H1/H2 - 3 bed	2
Type J1 - 2 bed	9
Type J2 - 2 bed	3
	132
TOTAL NO. OF UNITS	207

- EXTERNAL FINISHES**
- WALLS:** PAINTED SAND / CEMENT RENDER OR PROPRIETARY PRECOLOURED RENDER FINISH. SELECTED BRICKWORK WHERE INDICATED ON DRAWINGS.
 - WINDOWS:** SELECTED PROPRIETARY DOUBLE / TRIPLE GLAZED WINDOW SYSTEM WITH FRAMES TO APPROVED COLOUR. OBTAINED TO GLAZING TO BATHROOMS AND EN-SUITES.
 - DOORS:** SELECTED PROPRIETARY DOORS AND GLAZED SIDE SCREENS TO APPROVED COLOUR.
 - RAINWATER GOODS:** uPVC OR POWDER COATED METAL GUTTERS AND RAINWATER PIPES TO SELECTED COLOUR.
 - MAIN ROOF:** CONCRETE ROOF TILES IN SELECTED COLOUR.
 - LOW LEVEL PROJECTION:** ZINC CANOPY TO ENTRANCE OF UNITS.
 - OTHER ITEMS:** uPVC OR POWDER COATED METAL FASCIAS, SOFFITS AND BARGE BOARDS PAINTED. MILDSTEEL RAILINGS AND BALUSTRADES.

G3 A [2 Bed] - Ground floor area	77.4 m ²
G3 B [3 Bed] - First floor area	53.3 m ²
Second floor area	53.3 m ²
Total Floor Area (G3.B):	106.7 m²

REFER TO LANDSCAPE ARCHITECT'S DRAWINGS FOR ALL LANDSCAPING DETAILS

DUPLEX TYPE G3 HANDED

- Notes**
- Copyright Reserved
 - Work to figured dimensions only. Do not scale drawing.
 - The contractor is responsible for checking all levels and dimensions on site and shall refer all discrepancies to the Architect.
 - Where appropriate, for details of c.c. structure, or mechanical and electrical details, see Engineers drawings.
 - Proprietary items shall be fixed in strict accordance with manufacturers instructions.
 - Sizes of proprietary items shall be checked with manufacturer.
 - The contractor shall be responsible for the coordination of structure, finishes and services.

Issue Status	Progress
Planning Application	■
Fire Cert	
Disability Cert	
Tender	
Construction	
As Built	
Information Only	

No.	Date	Revision	Initials
01	14.10.2022	ISSUED FOR PLANNING	

Project	Aderrig Phase 3 Adamstown SDZ Residential Development
Drawing Title	Duplex Type G3 (end terrace) Handed-Plans, Elevation, Section
Drawing No	6259A-P-212
Scale	1:100@A1
Rev	01
Drawn	IFJ, ED
Date	14/10/22

6-7 HARCOURT TERRACE, DUBLIN 2, IRELAND
t +353 1 618 2400 f +353 1 676 7395
a architecture@bkd.ie
www.bkd.ie

bkd architects
BURKE-KENNEDY DOYLE