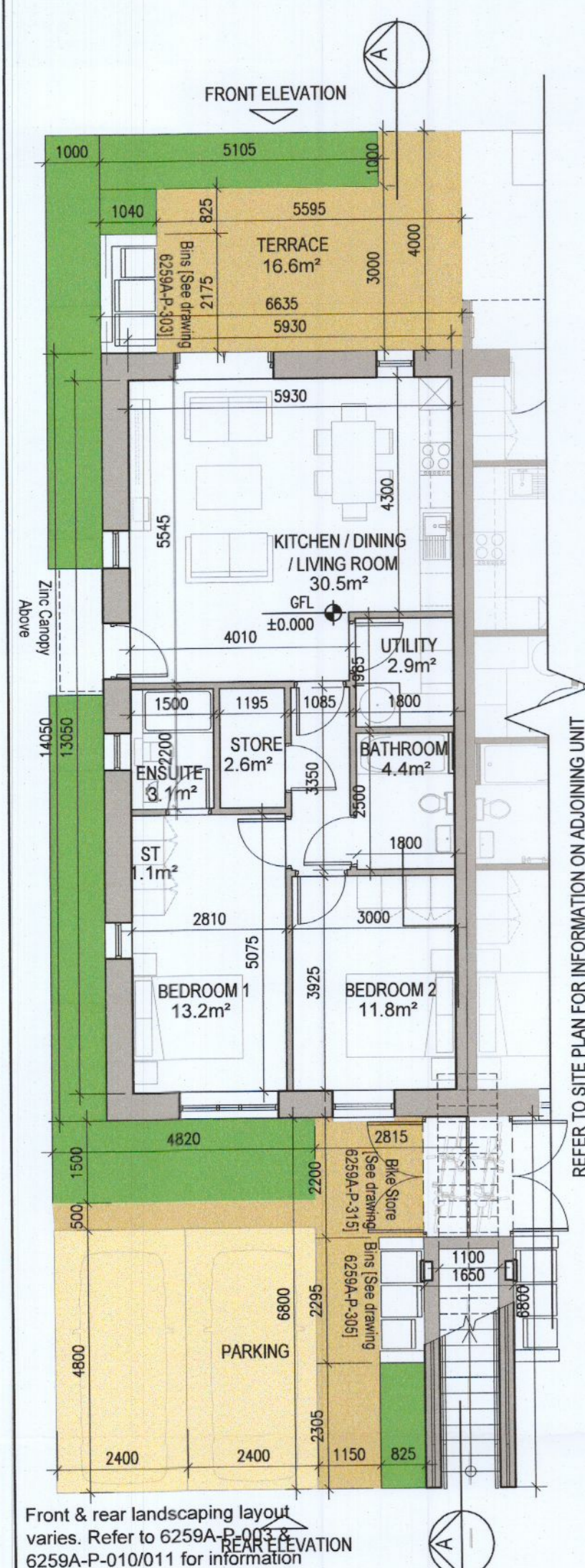
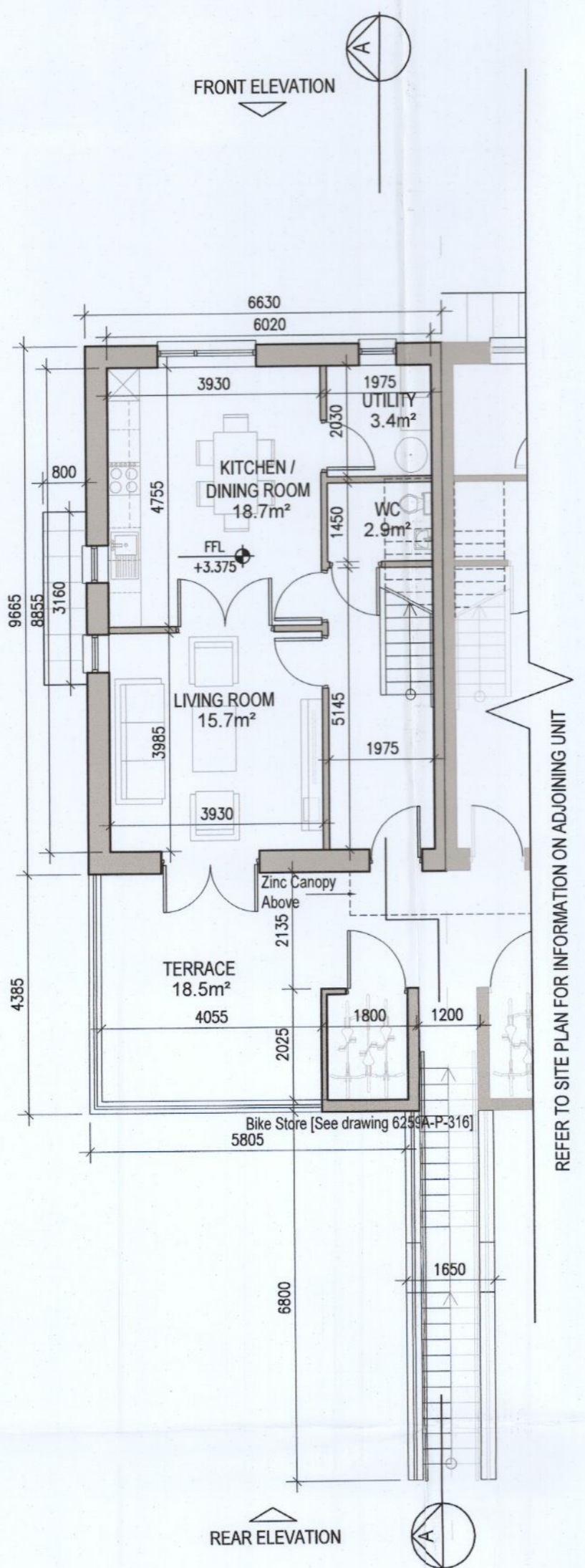


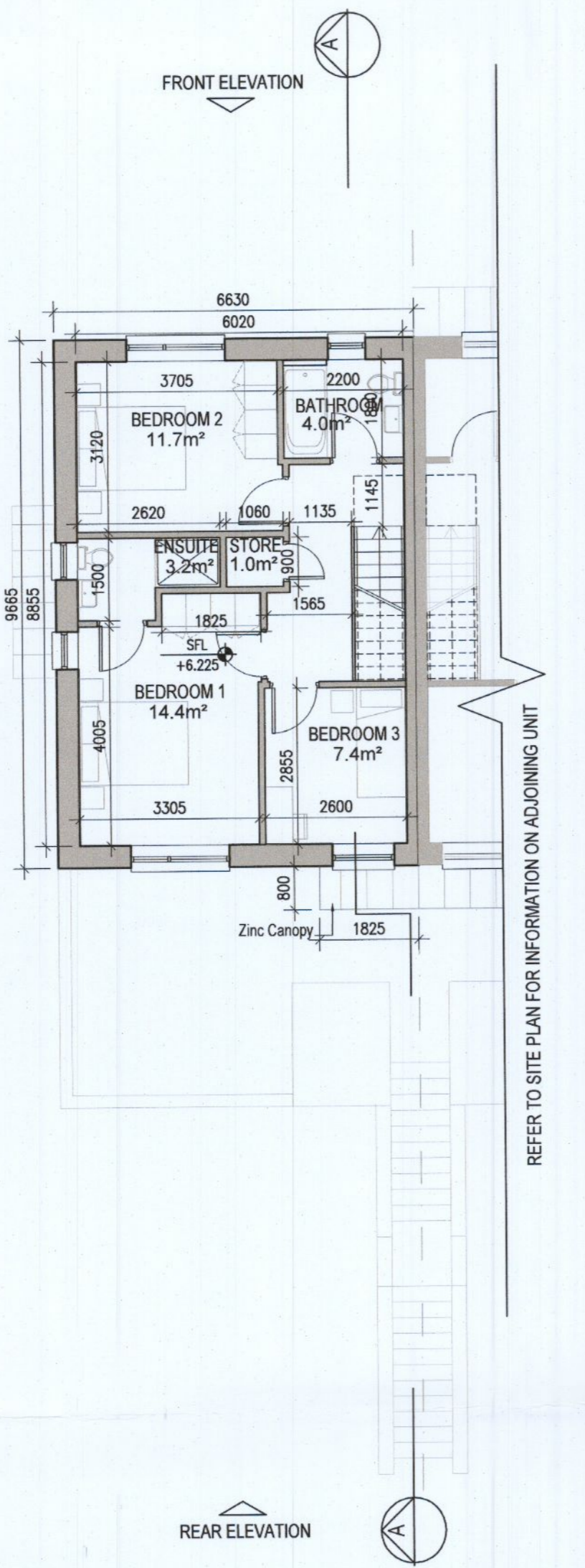
DUPLEX TYPE G3 HANDED



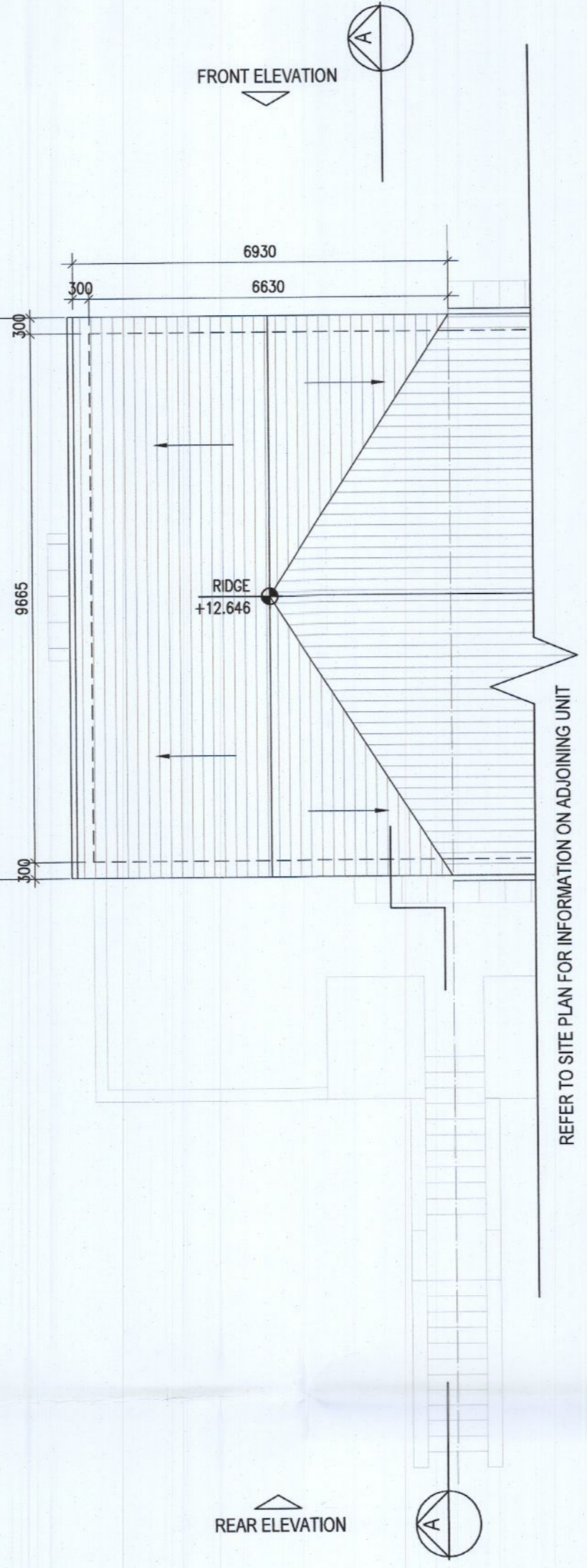
01 Ground Floor Plan [G3.A]



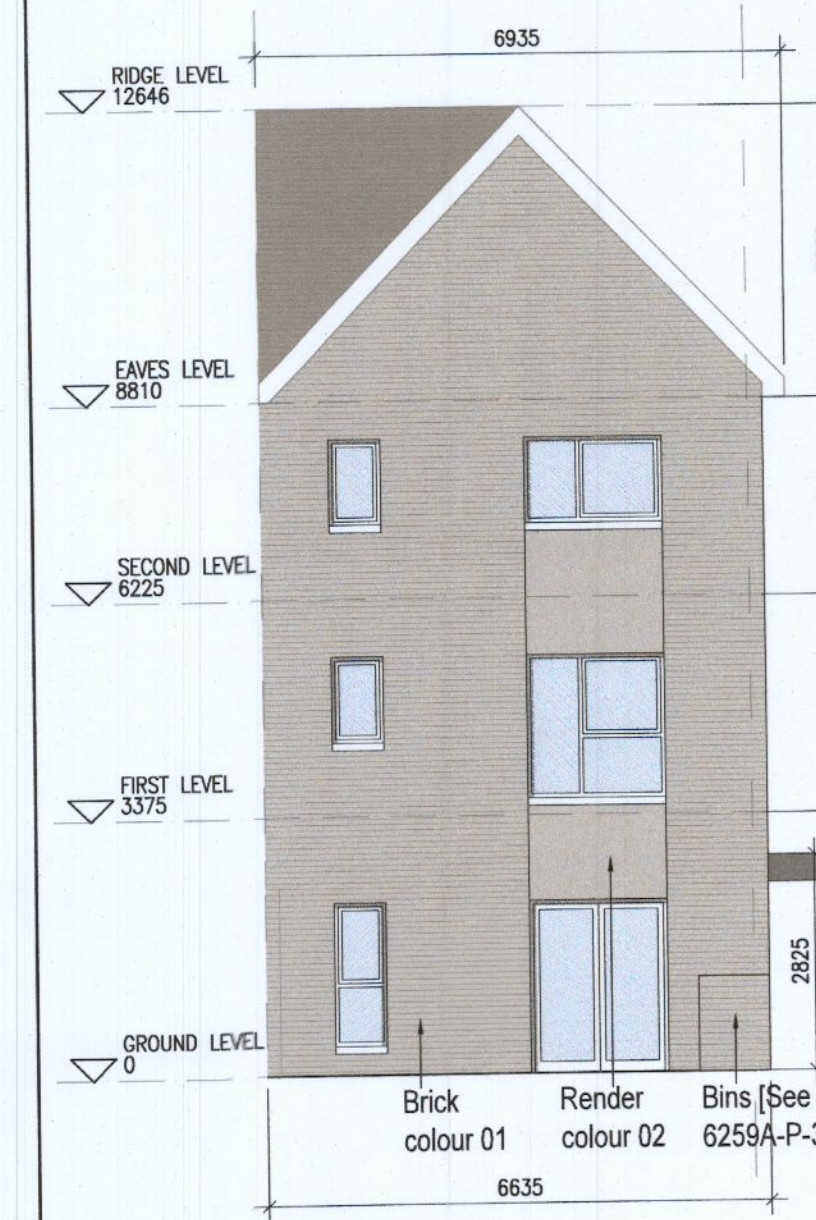
02 First Floor Plan [G3.B]



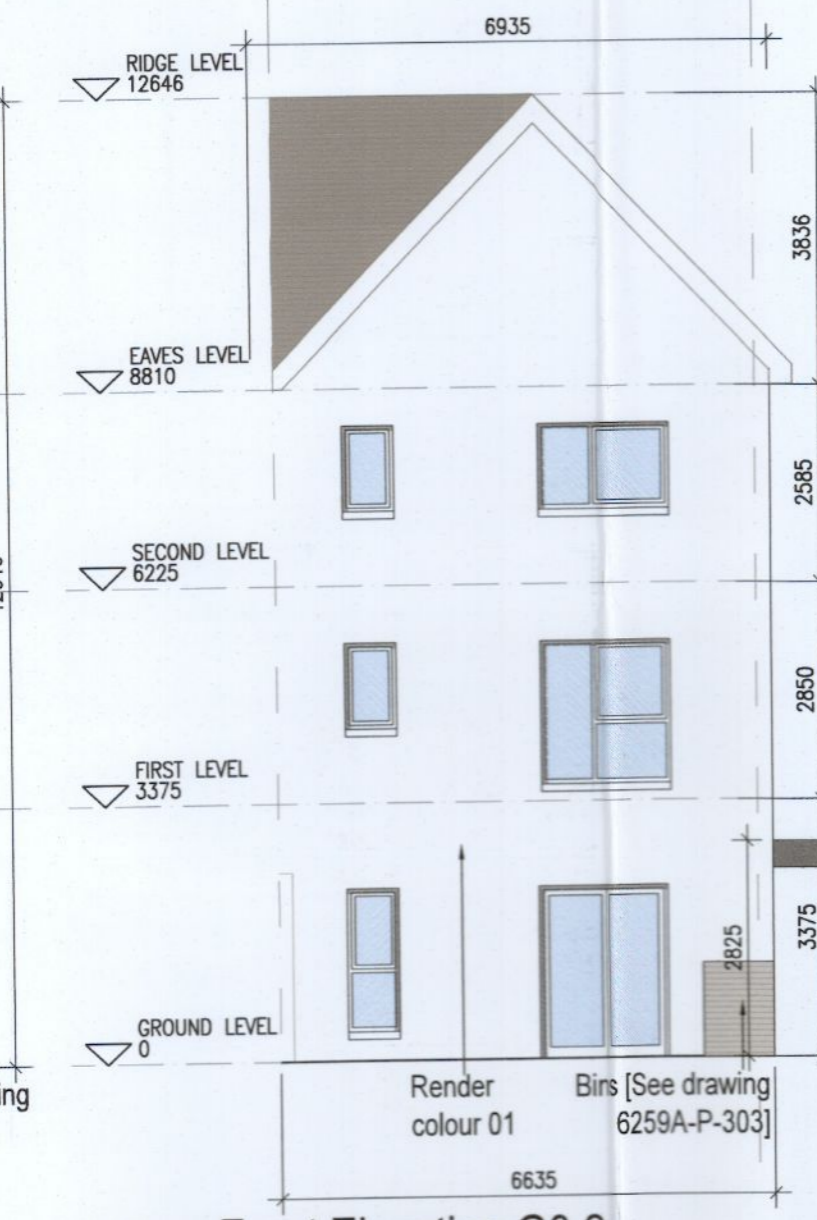
03 Second Floor Plan [G3.B]



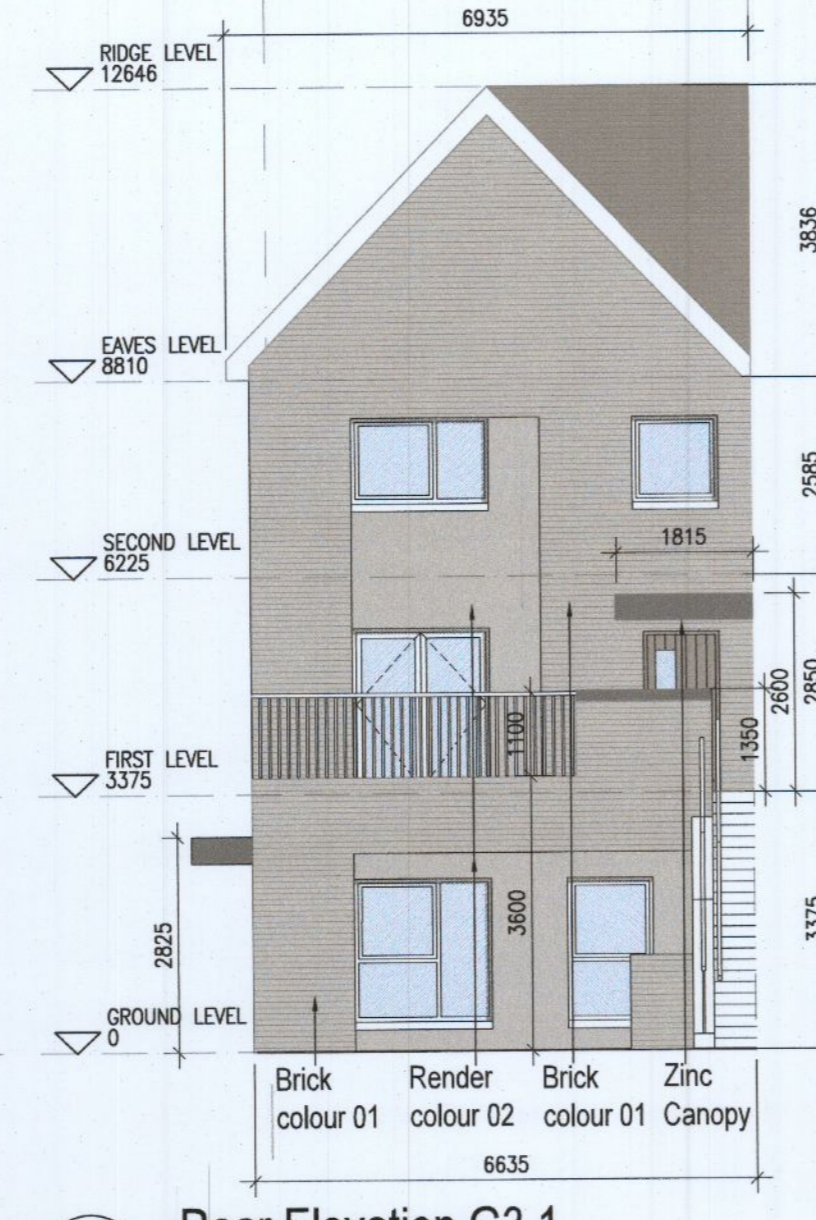
04 Roof Floor Plan



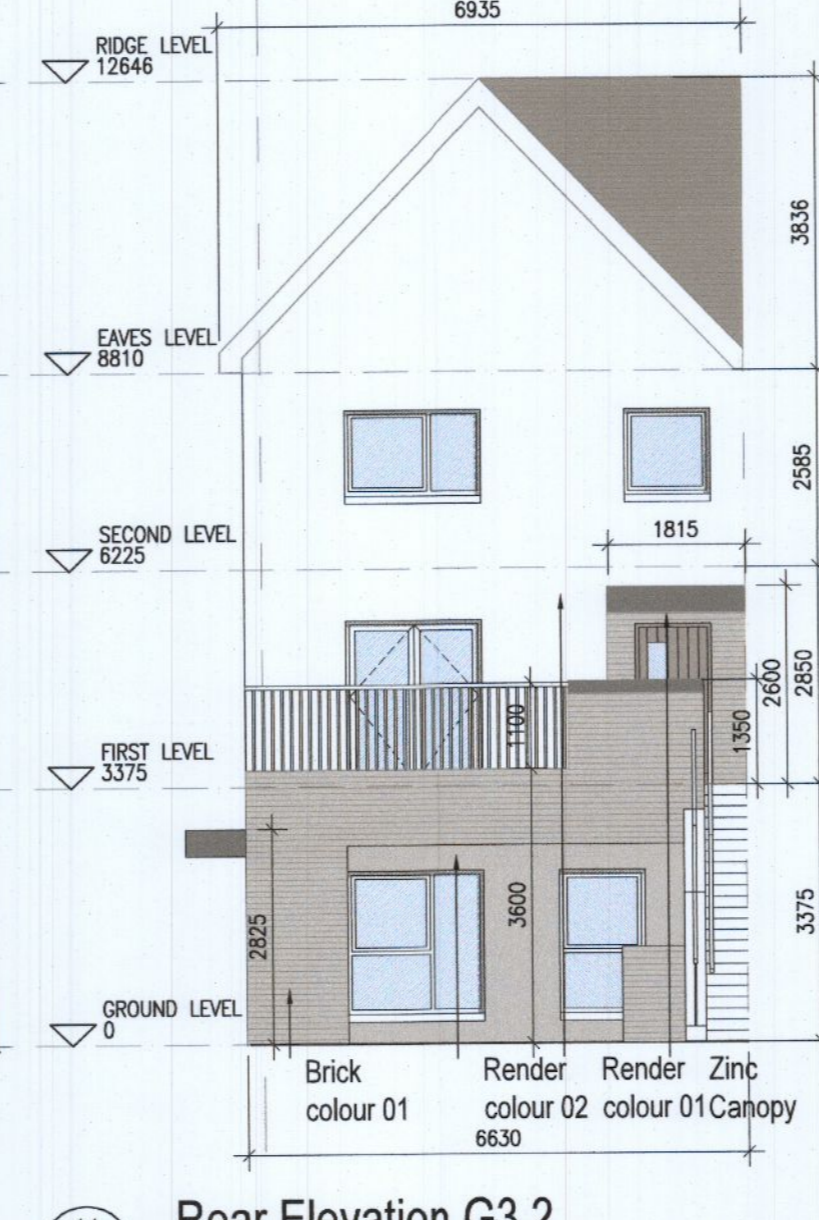
08 Front Elevation G3.1



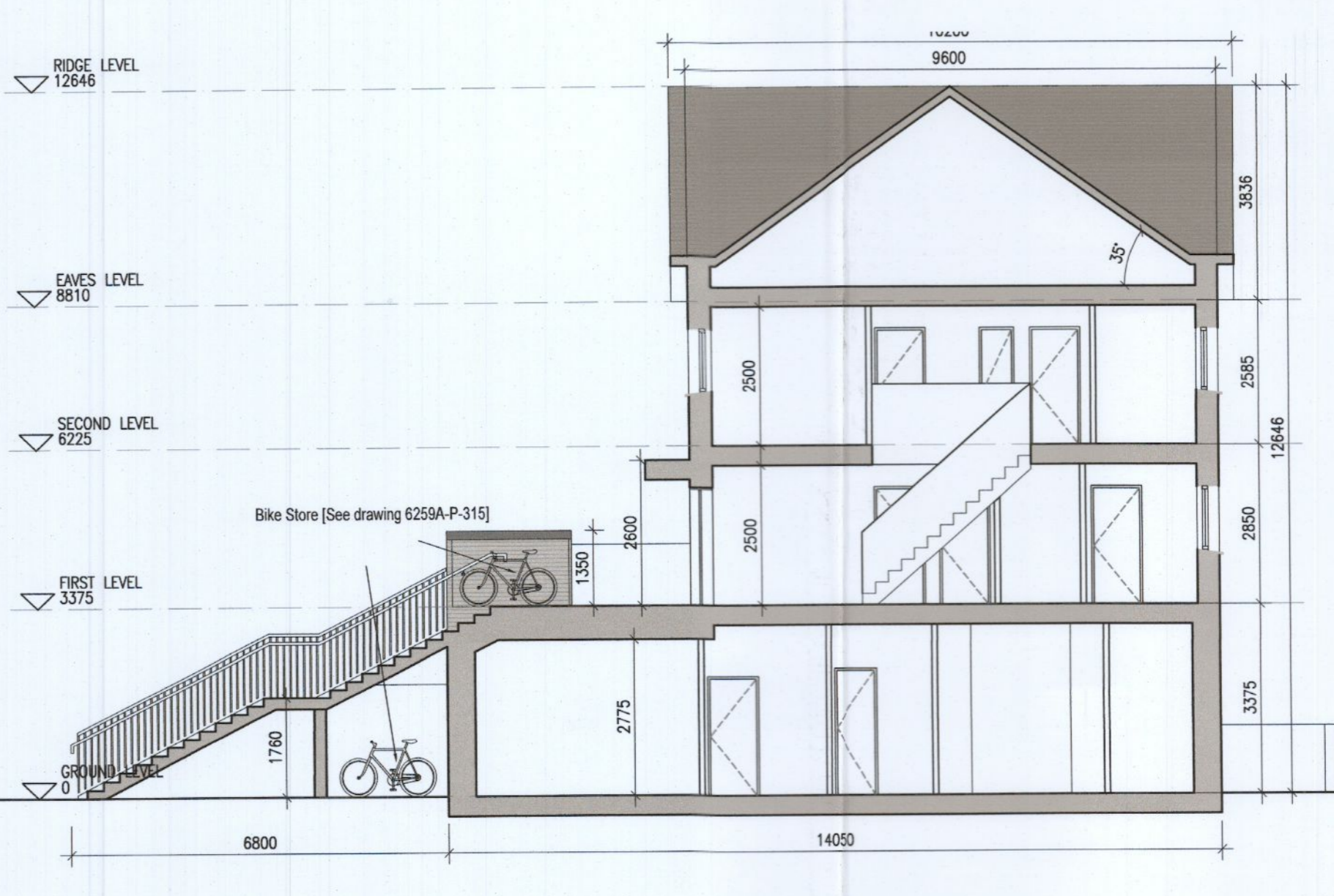
09 Front Elevation G3.2



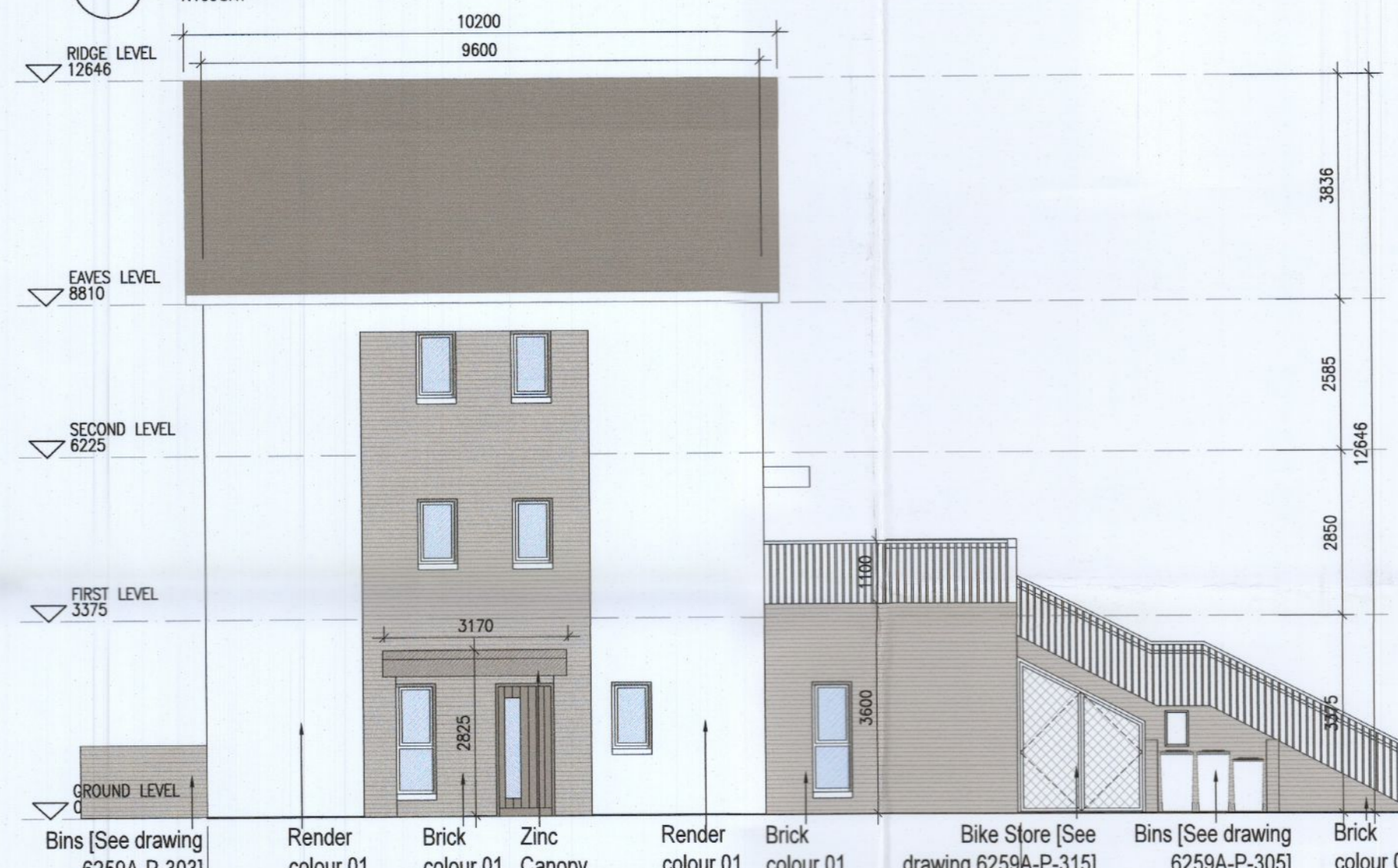
10 Rear Elevation G3.1



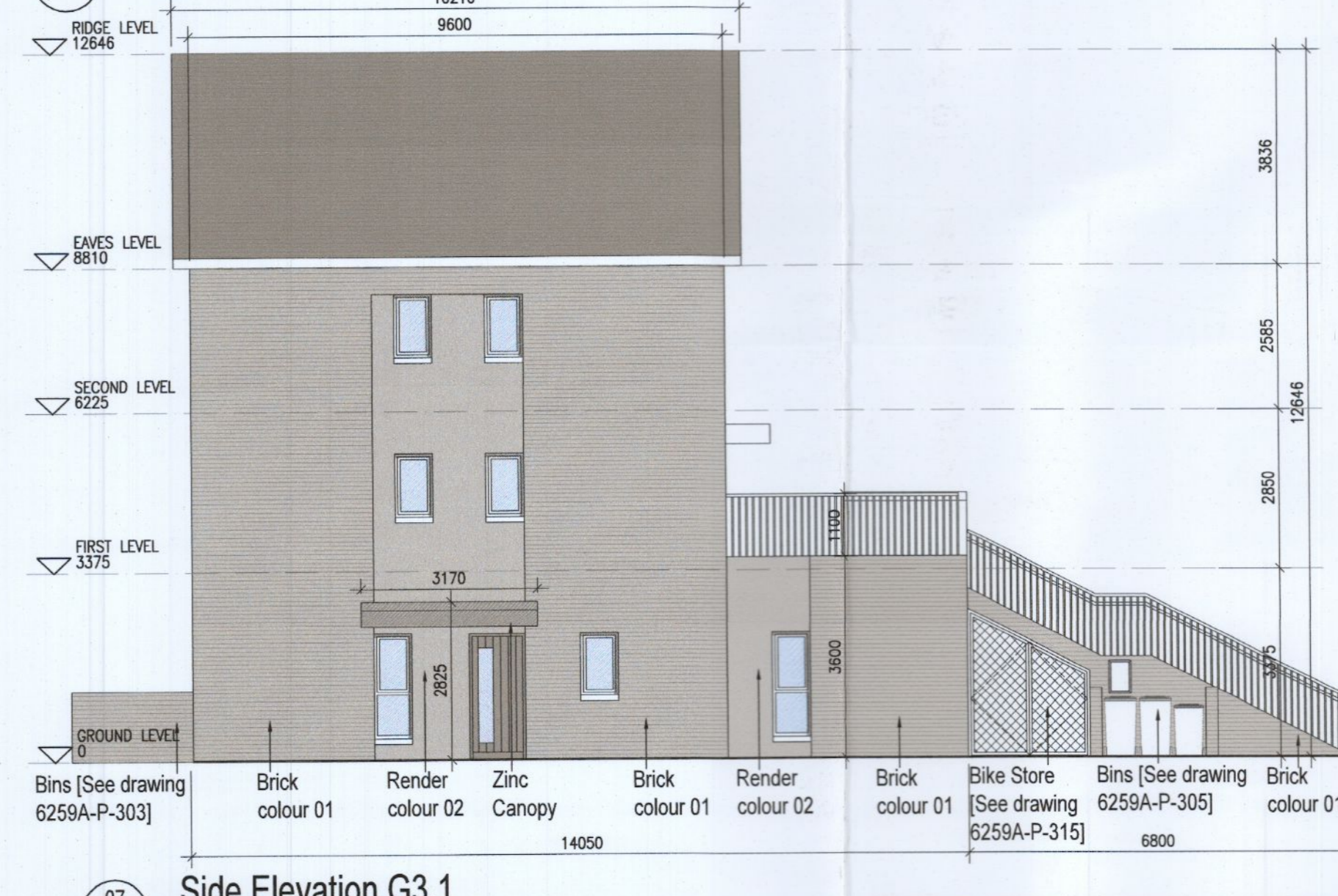
11 Rear Elevation G3.2



05 Typical Section [A-A]



06 Side Elevation G3.2



07 Side Elevation G3.1



Indicates unit locations
KEY PLAN [NTS]

HOUSE TYPES	No. OF UNITS
Type A1/A2 - 3 bed	16
Type B1/B2 - 3 bed	28
Type C1/C2/C3 - 3 bed	15
Type D - 4 bed	3
Type E1/E2 - 4 bed	7
Type K1/K2 - 4 bed	6
	75

DUPLEX	No. OF UNITS
Type F1 - 2 bed	3
Type F2 - 3 bed	3
Type F3 - 2 bed	1
Type G1 - 2 bed	6
Type G2 - 3 bed	6
Type G3 - 2 bed	33
Type G4 - 3 bed	33
Type H1/H2 - 3 bed	2
Type H3 - 3 bed	2
Type J1 - 2 bed	9
Type J2 - 3 bed	9
Type J3 - 3 bed	3
Type J4 - 3 bed	3
TOTAL NO. OF UNITS	207

EXTERNAL FINISHES

WALLS: PAINTED SAND / CEMENT RENDER OR PROPRIETARY PRECOLOURED RENDER FINISH SELECTED BRICKWORK WHERE INDICATED ON DRAWINGS

WINDOWS: SELECTED PROPRIETARY DOUBLE / TRIPLE GLAZED WINDOW SYSTEM WITH FRAMES TO APPROVED COLOUR OBTAINED FROM MANUFACTURER'S CATALOGUE

DOORS: SELECTED PROPRIETARY DOORS AND GLAZED SIDE SCREENS TO APPROVED COLOUR.

RAINWATER GOODS: uPVC OR POWDER COATED METAL GUTTERS AND RAINWATER PIPES TO SELECTED COLOUR.

MAIN ROOF: CONCRETE ROOF TILES IN SELECTED COLOUR.

LOW LEVEL PROJECTION: ZINC CANOPY TO ENTRANCE OF UNITS

OTHER ITEMS: uPVC OR POWDER COATED METAL FASCIAS, SOFFITS AND BARGE BOARDS PAINTED MILDSTEEL RAILINGS AND BALUSTRADES

G3A [2 Bed] - Ground floor area	77.4 m²
G3B [3 Bed] - First floor area	53.3 m²
Second floor area	53.3 m²
Total Floor Area (G3.B):	106.7 m²

REFER TO LANDSCAPE ARCHITECT'S DRAWINGS FOR ALL LANDSCAPING DETAILS

DUPLEX TYPE G3 HANDED

Notes

- Copyright Reserved
- Work to figured dimensions only. Do not scale drawing.
- The contractor is responsible for checking all levels and dimensions on site and shall refer all discrepancies to the Architect
- Where appropriate, for details of i.c. structure, or mechanical and electrical details, see Engineers drawings
- Proprietary items shall be fixed in strict accordance with manufacturer's instructions.
- Sizes of proprietary items shall be checked with manufacturer.
- The contractor shall be responsible for the coordination of structure, finishes and services.

Issue Status	Progress
Planning Application	■
Fire Cert	
Disability Cert	
Tender	
Construction	
As Built	
Information Only	

No.	Date	Revision	Initials
01	14.10.2022	ISSUED FOR PLANNING	ED

Project	Aderrig Phase 3 Adamstown SDZ Residential Development
Drawing Title	Duplex Type G3 (end terrace) Handed-Plans,Elevation,Section
Drawing No	6259A-P-212
Scale	1:100@A1
Rev	01
Drawn	IFJ, ED
Date	14/10/22

6 - 7 HAROURT TERRACE, DUBLIN 2, IRELAND
 T +353-1-618 2400 F +353-1-676 7386
 e architect@bkd.ie
 www.bkd.ie
bkd architects
 BURKE-KENNEDY DOYLE