

DUPLEX TYPE G2

G2.A [2 Bed] - Ground floor area	77.4 m ²
G2.B [3 Bed] - First floor area	53.3 m ²
Second floor area	53.3 m ²
Total Floor Area (G2.B):	106.7 m ²

EXTERNAL FINISHES

WALLS: PAINTED SAND / CEMENT RENDER OR PROPRIETARY PRECOLOURED RENDER FINISH. SELECTED BRICKWORK WHERE INDICATED ON DRAWINGS.

WINDOWS: SELECTED PROPRIETARY DOUBLE / TRIPLE GLAZED WINDOW SYSTEM WITH FRAMES TO APPROVED COLOUR. OBSCURED GLAZING TO BATHROOMS AND EN-SUITES.

DOORS: SELECTED PROPRIETARY DOORS AND GLAZED SIDE SCREENS TO APPROVED COLOUR.

RAINWATER GOODS: uPVC OR POWDER COATED METAL GUTTERS AND RAINWATER PIPES TO SELECTED COLOUR.

MAIN ROOF: CONCRETE ROOF TILES IN SELECTED COLOUR.

LOW LEVEL PROJECTION: ZINC CANOPY TO ENTRANCE OF UNITS.

OTHER ITEMS: uPVC OR POWDER COATED METAL FASCIAS, SOFFITS AND BARGE BOARDS PAINTED. MILDSTEEL RAILINGS AND BALUSTRADES.

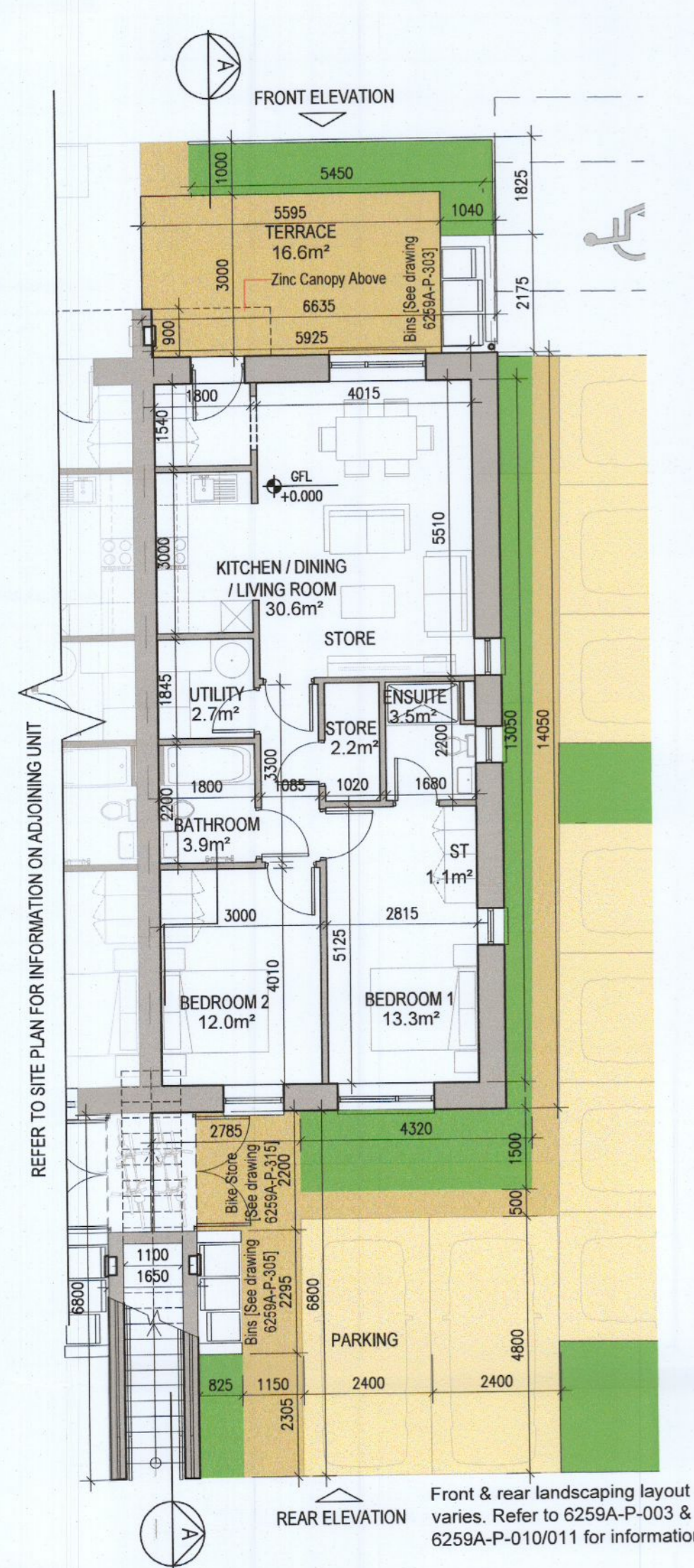


**FOR THE HANDED VERSION
GROUND FLOOR PLAN REFER
TO BLOCK PLAN DRAWINGS**

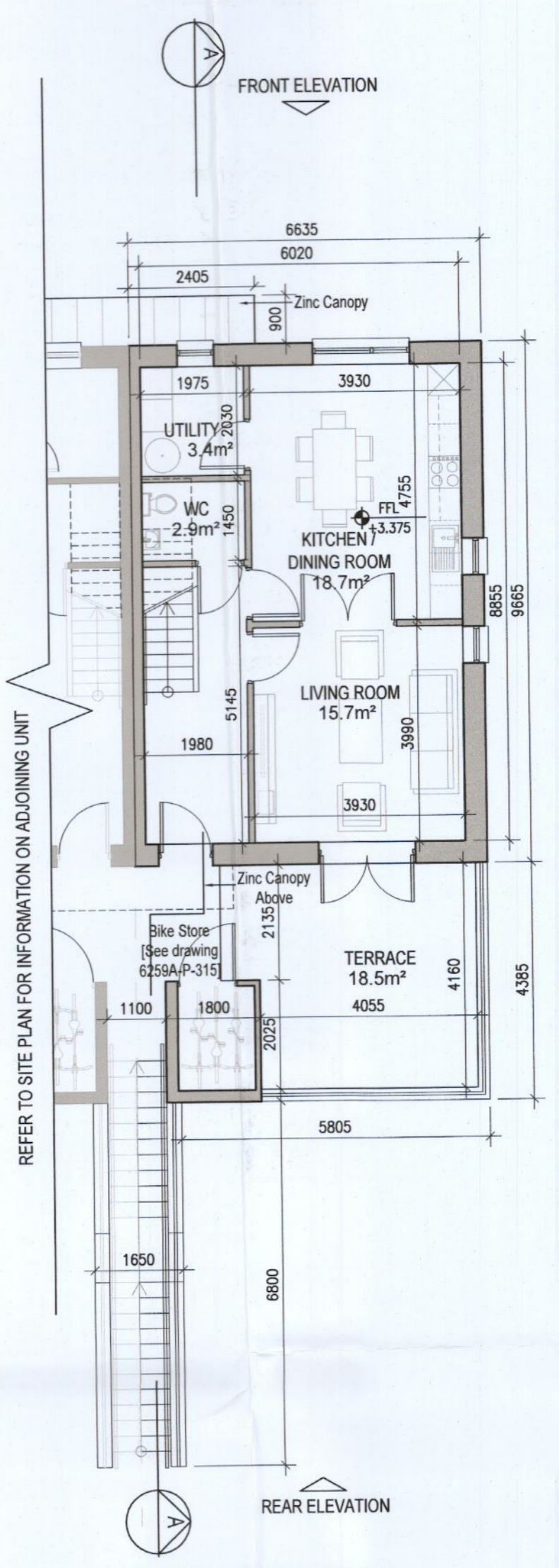
**FOR THE HANDED VERSION
UPPER LEVEL PLAN REFER TO
DRAWING 6259A-P-212 G3 UNIT
1ST FLOOR PLAN FOR DETAIL**

HOUSE TYPES	No. OF UNITS
Type A1/A2 - 3 bed	16
Type B1/B2 - 3 bed	28
Type C1/C2/C3 - 3 bed	15
Type D - 4 bed	3
Type E1/E2 - 4 bed	7
Type K1/K2 - 4 bed	6
	75

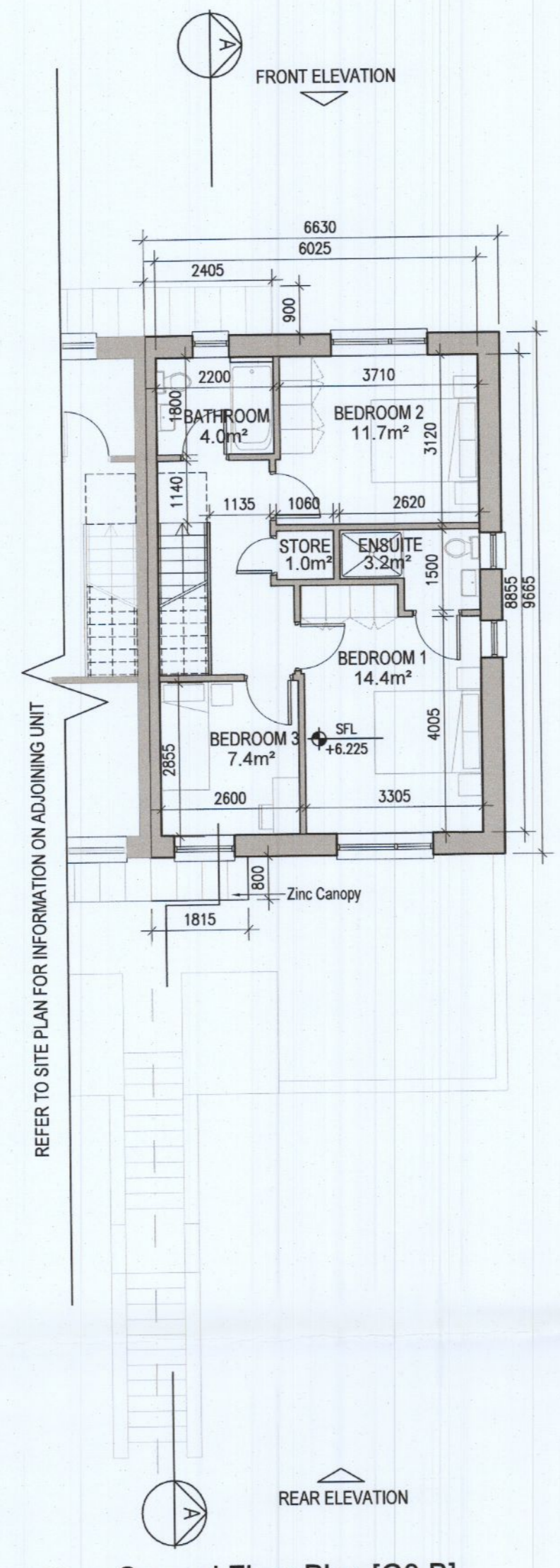
DUPLEX	No. OF UNITS
Type F1 - 2 bed	3
Type F2 - 2 bed	1
Type F3 - 2 bed	6
Type G1 - 2 bed	33
Type G2 - 2 bed	2
Type G3 - 2 bed	7
Type H1/H2 - 3 bed	2
Type J1 - 2 bed	9
Type J2 - 2 bed	3
	132
TOTAL NO. OF UNITS	207



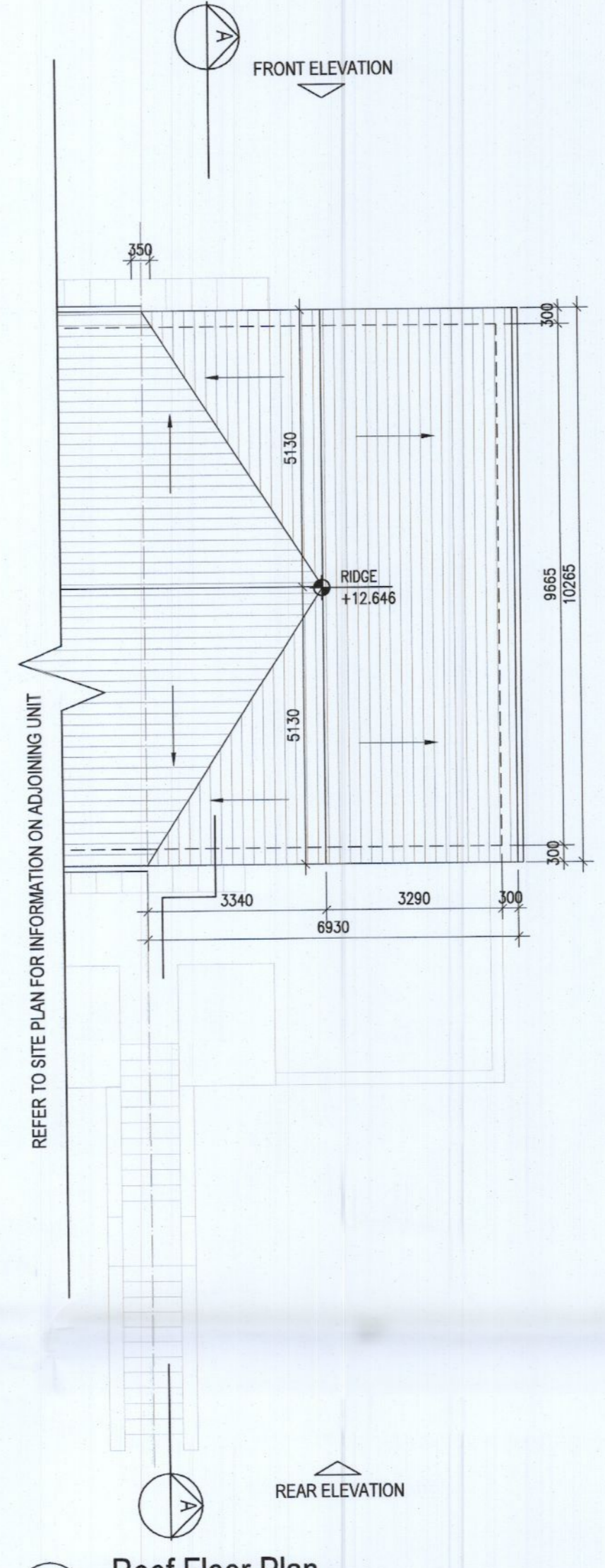
01 Ground Floor Plan [G2.A]
1:100B/A1



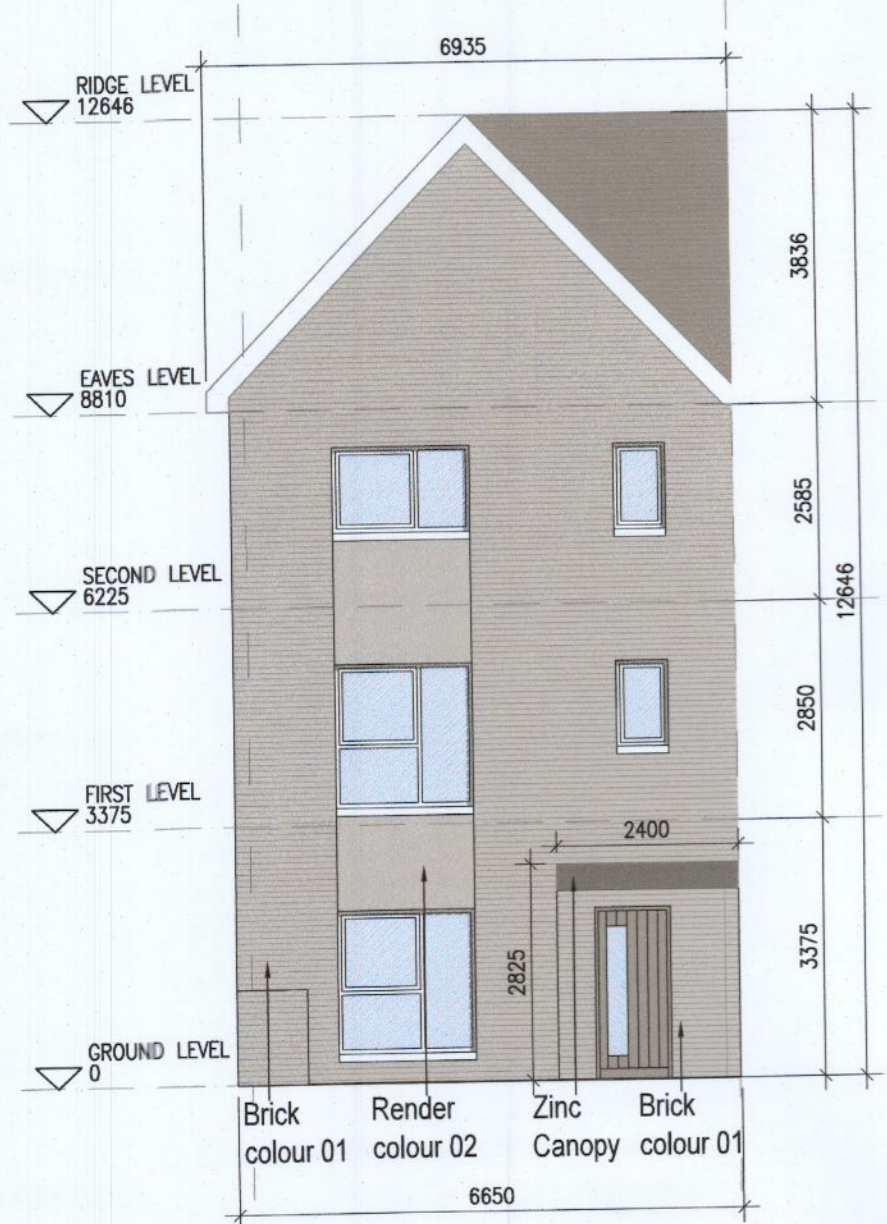
02 First Floor Plan [G2.B]
1:100B/A1



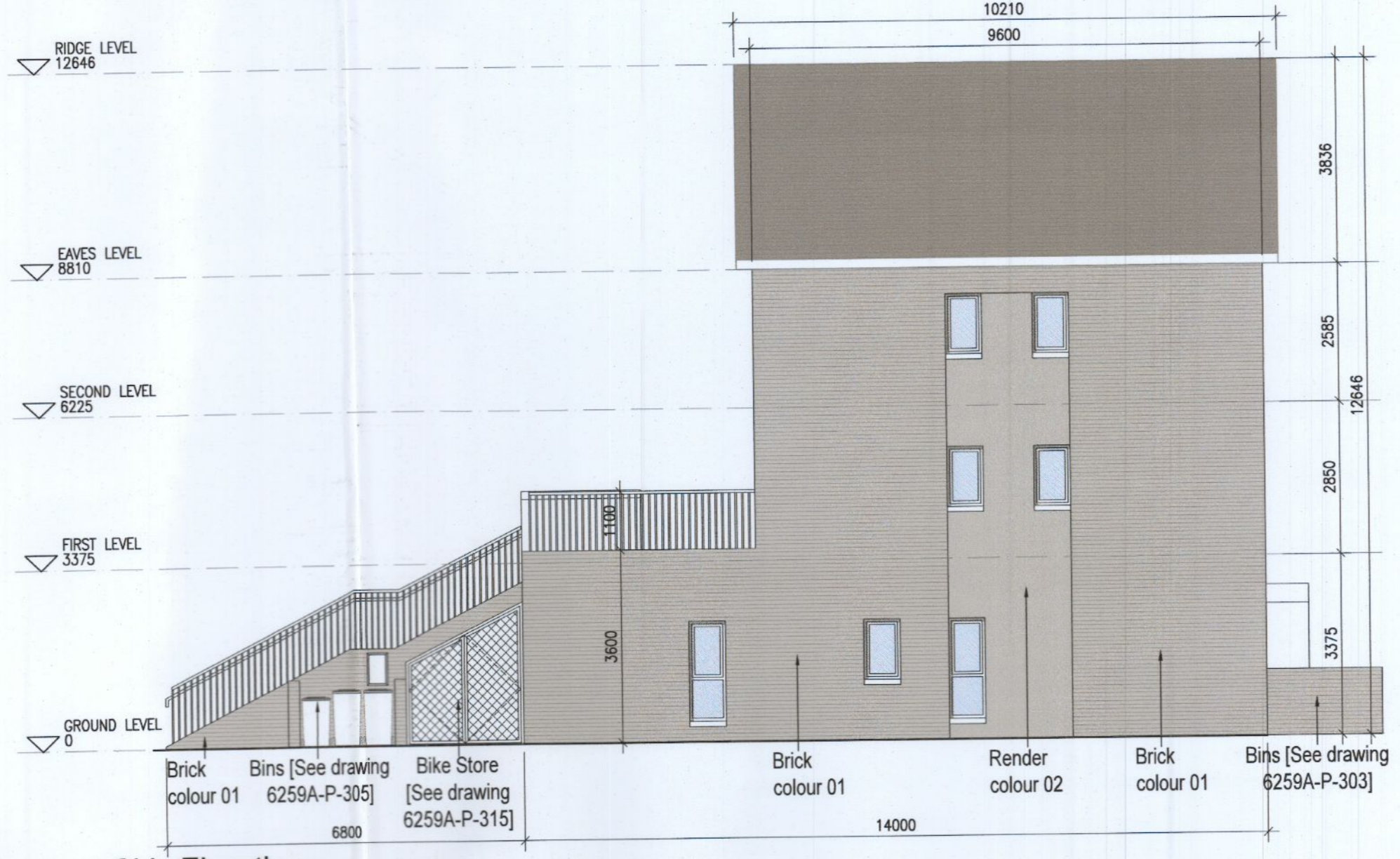
03 Second Floor Plan [G2.B]
1:100B/A1



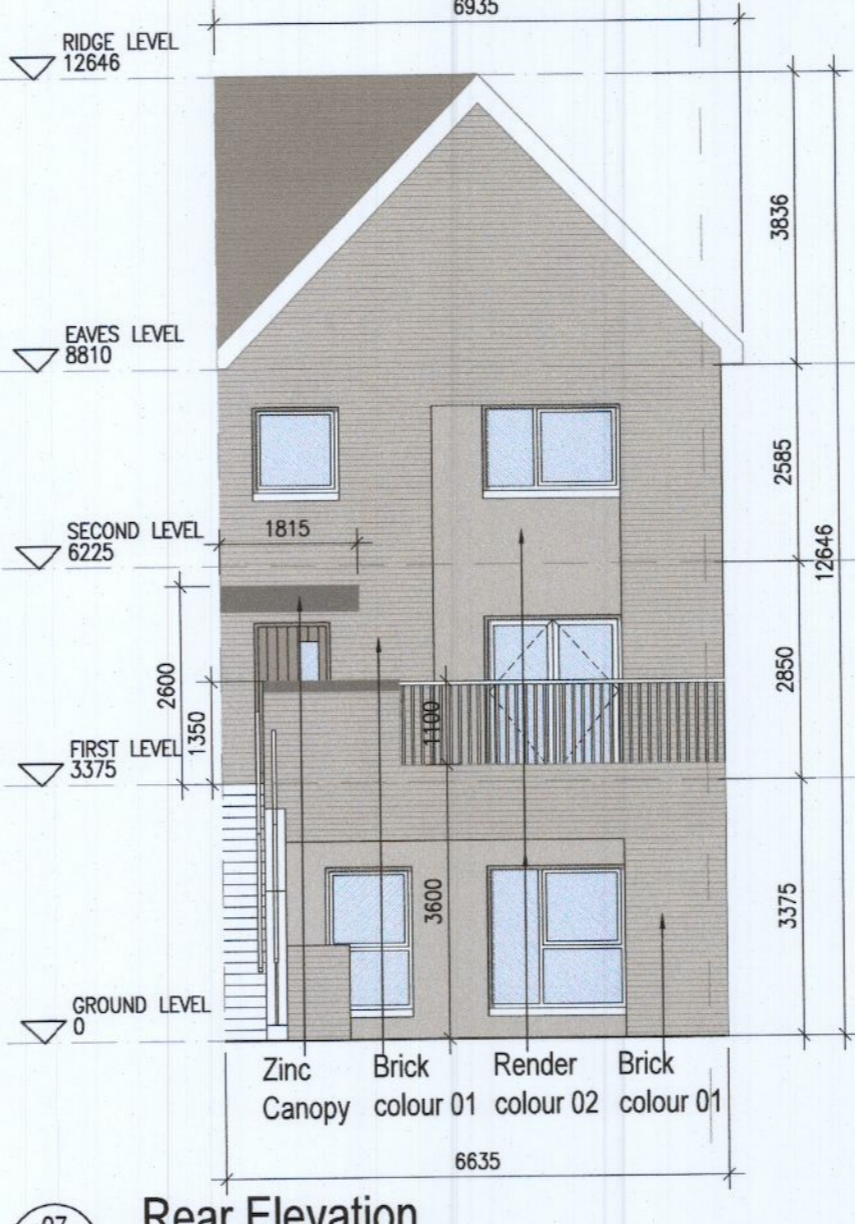
04 Roof Floor Plan
1:100B/A1



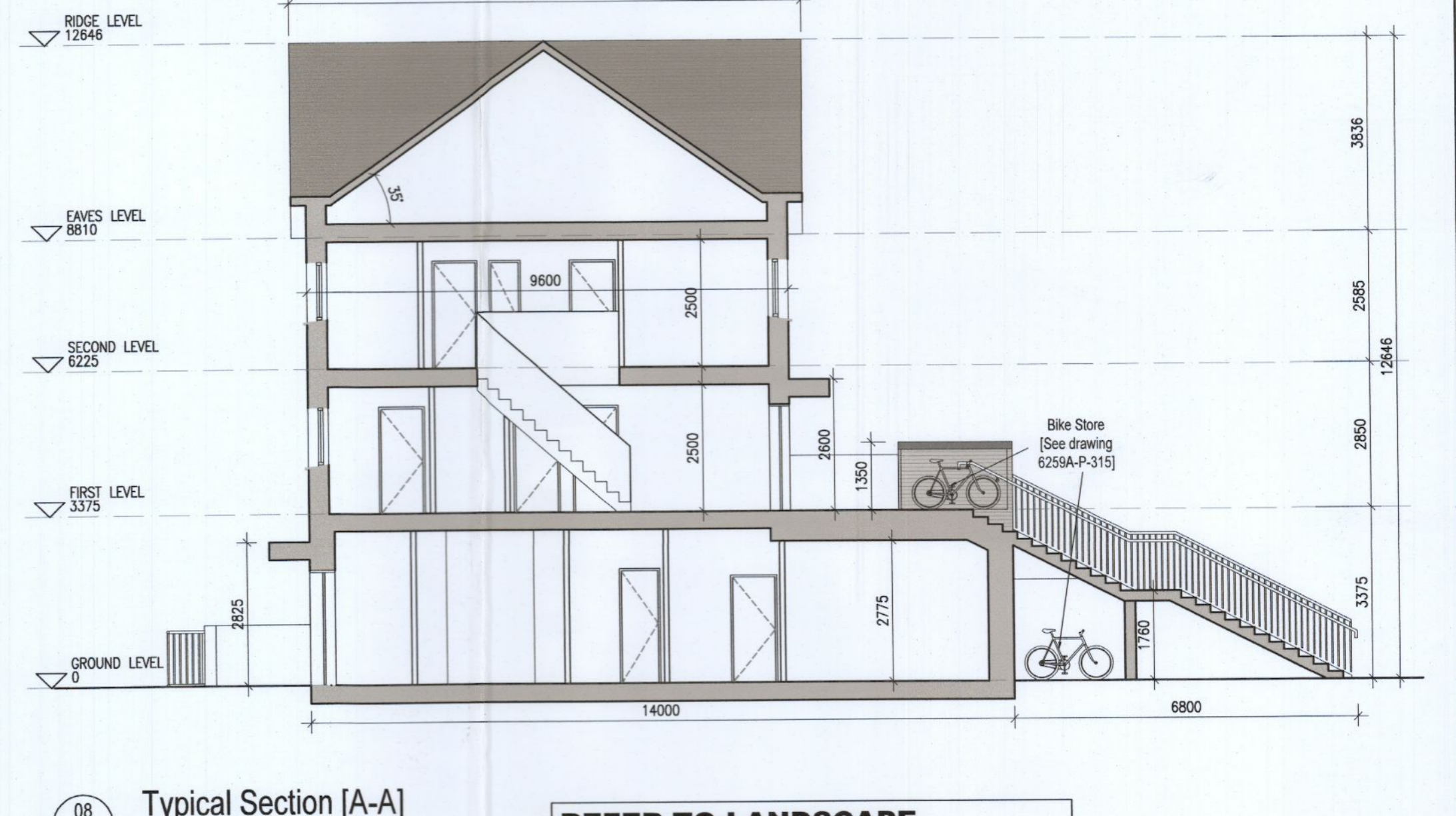
05 Front Elevation
1:100B/A1



06 Side Elevation
1:100B/A1



07 Rear Elevation
1:100B/A1



08 Typical Section [A-A]
1:100B/A1

REFER TO LANDSCAPE ARCHITECT'S DRAWINGS FOR ALL LANDSCAPING DETAILS

DUPLEX TYPE G2

- Notes:**
1. Copyright Reserved
 2. Work to figured dimensions only. Do not scale drawing.
 3. The contractor is responsible for checking all levels and dimensions on site and shall refer all discrepancies to the Architect.
 4. Where appropriate, for details of c/c, structure, or mechanical and electrical details, see Engineers drawings.
 5. Proprietary items shall be fixed in strict accordance with manufacturers instructions.
 6. Sites of proprietary items shall be checked with manufacturer.
 7. The contractor shall be responsible for the coordination of structure, finishes and services.

Issue Status	Progress
Planning Application	■
Fire Cert	
Disability Cert	
Tender	
Construction	
As Built	
Information Only	

No.	Date	Revision	Initials
01	14.10.2022	ISSUED FOR PLANNING	ED

Project	Aderrig Phase 3, Adamstown SDZ Residential Development
Drawing Title	Duplex Type G2 (end terrace) -Plans, Elevation, Section
Drawing No	6259A-P-210
Scale	1:100@A1
Rev	01
Drawn	IF, J, ED
Date	14/10/22

6 - 7 HARPCOURT TERRACE, DUBLIN 2, IRELAND
t +353 1 4910 2400 f +353 1 4910 7300
e architecture@bkd.ie www.bkd.ie

bkd architects
BURKE-KENNEDY DOYLE