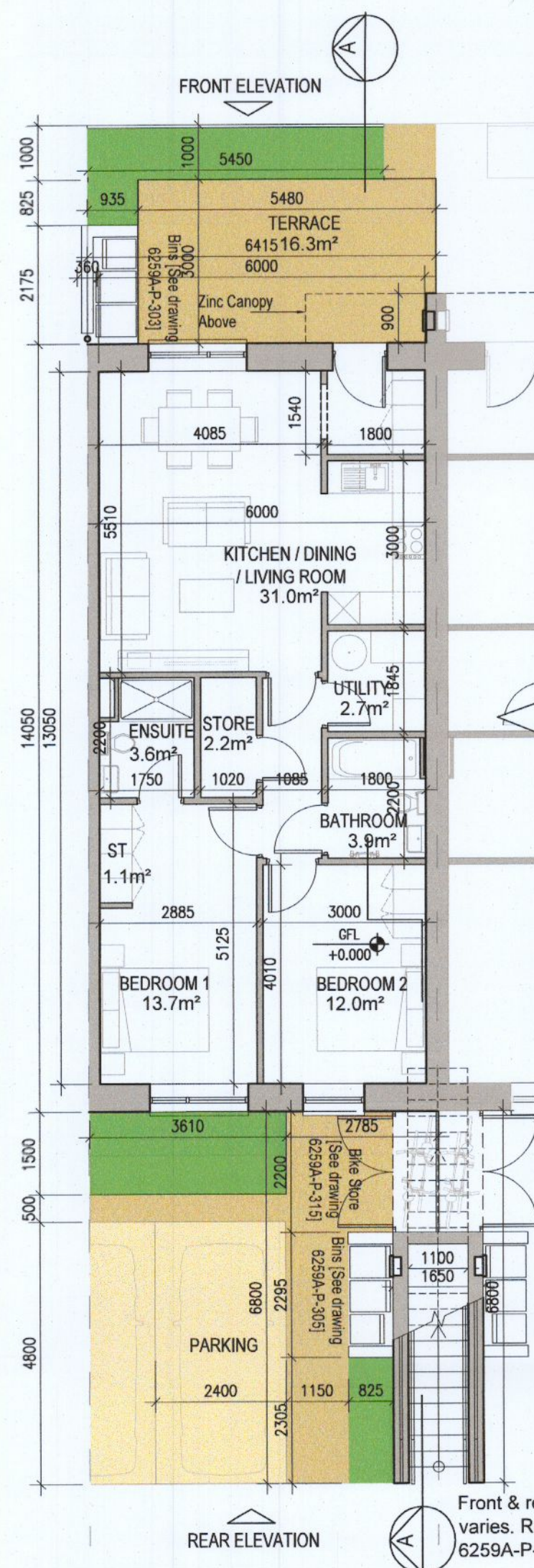
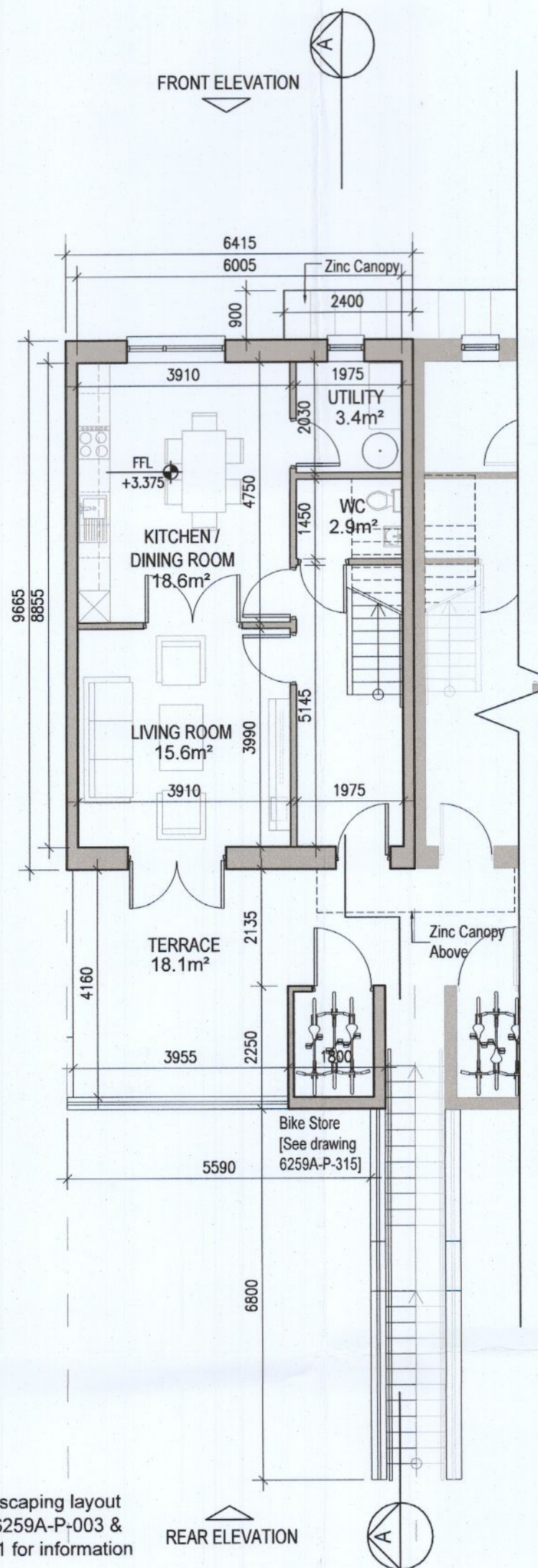


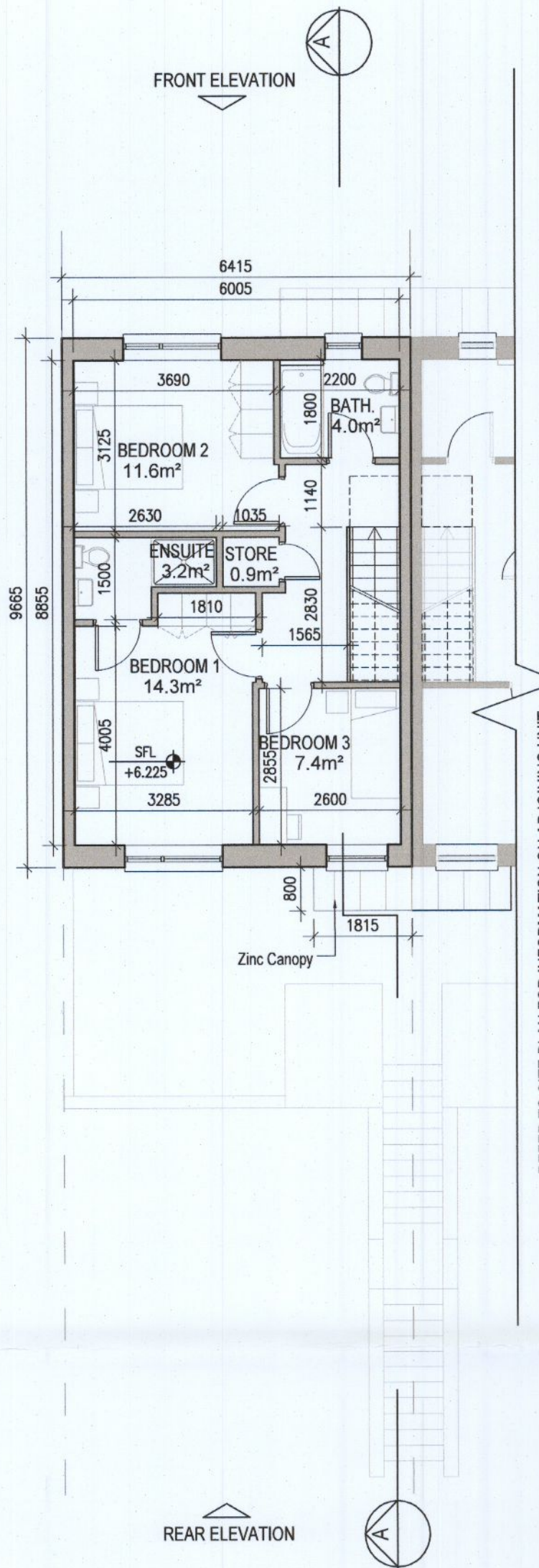
DUPLEX TYPE G1 HANDED



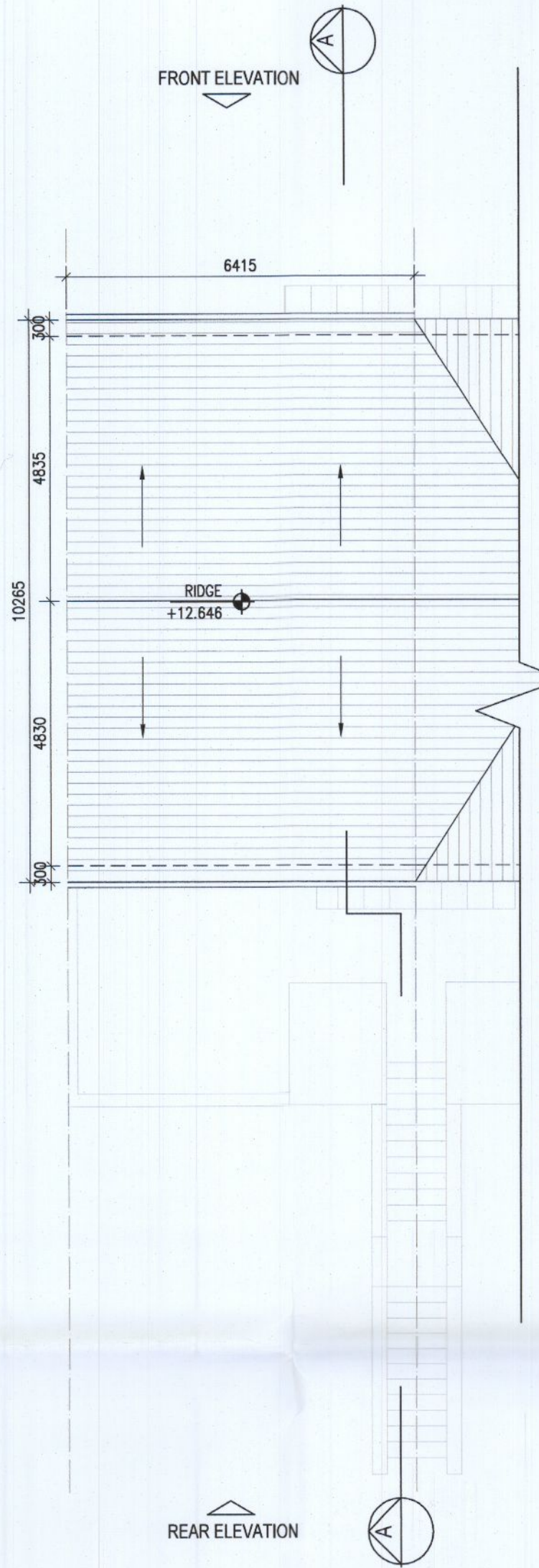
01 Ground Floor Plan
1:100@A1



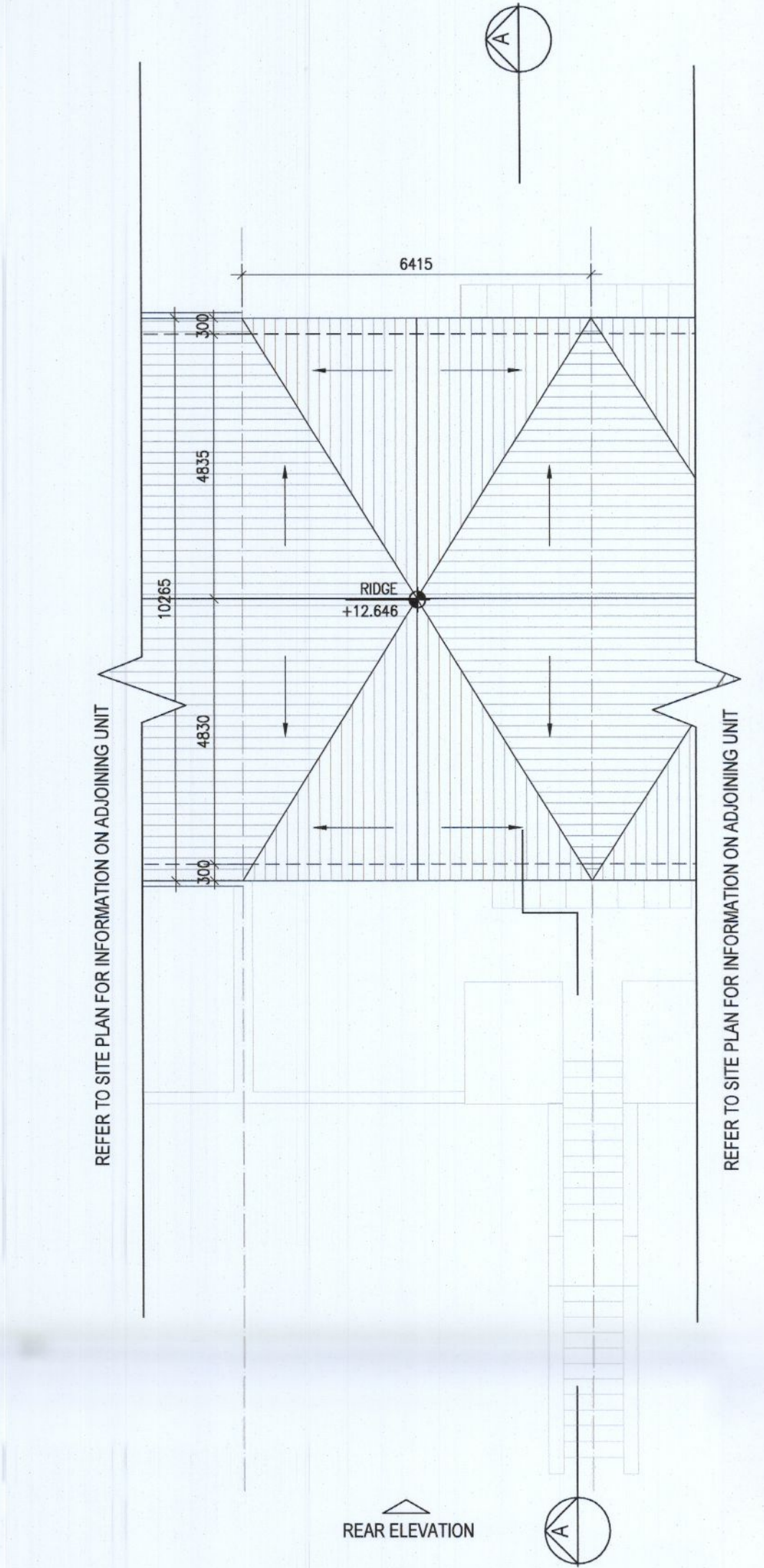
02 First Floor Plan
1:100@A1



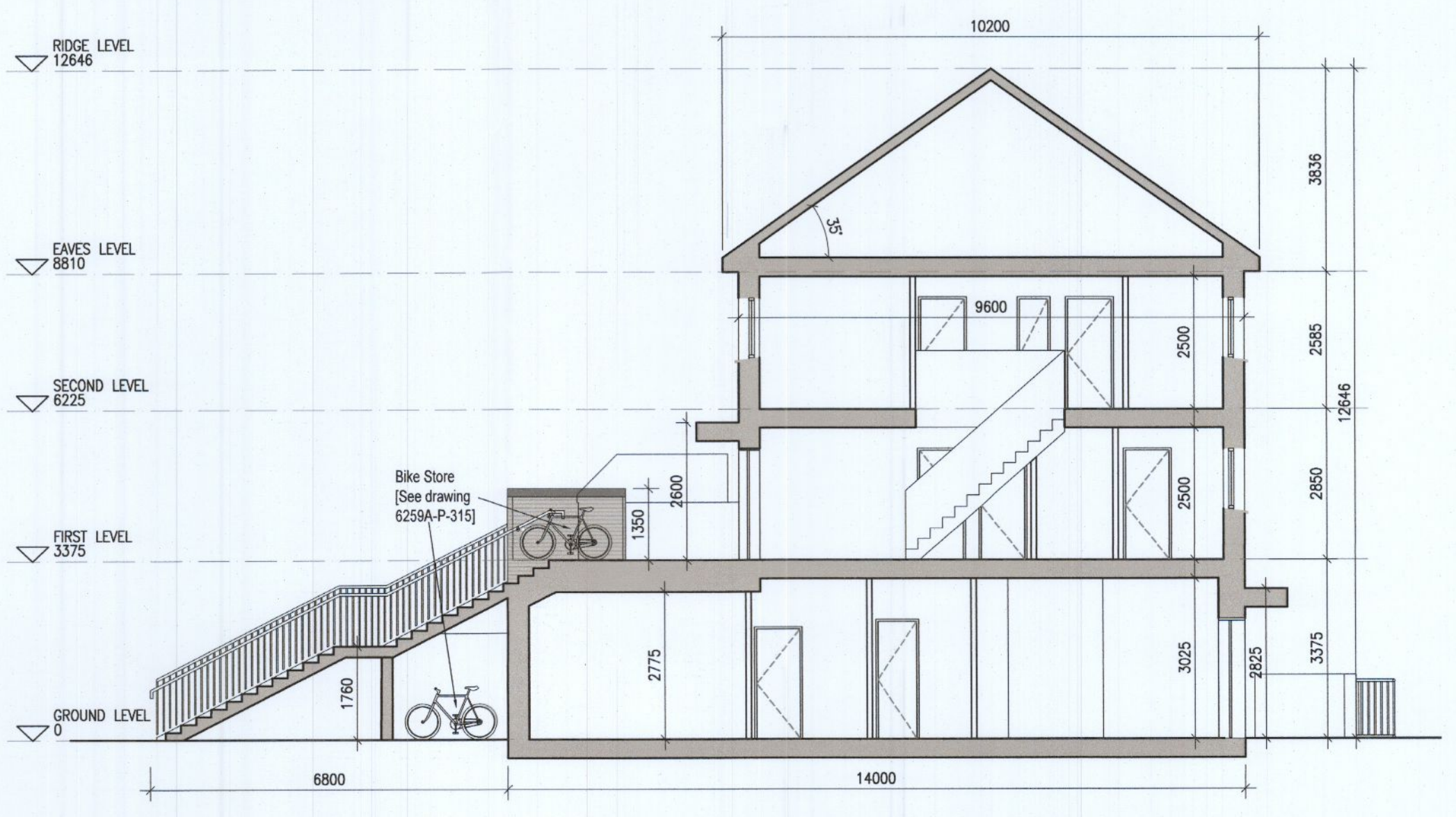
03 Second Floor Plan
1:100@A1



04 Roof Floor Plan G1.1, G1.2, G1.3 & G1.4
1:100@A1



05 Roof Floor Plan G1.5
1:100@A1



06 Typical Section [A-A]
1:100@A1



Indicates unit locations
KEY PLAN [NTS]

HOUSE TYPES	No. OF UNITS
Type A1/A2 - 3 bed	16
Type B1/B2 - 3 bed	28
Type C1/C2/C3 - 3 bed	15
Type D - 4 bed	3
Type E1/E2 - 4 bed	7
Type K1/K2 - 4 bed	6
	75

DUPLEX	No. OF UNITS
Type F1 - 2 bed	3
Type F2 - 2 bed	3
Type F3 - 3 bed	1
Type F3 - 3 bed	1
Type F3 - 2 bed	6
Type G1 - 2 bed	6
Type G2 - 2 bed	33
Type G2 - 3 bed	2
Type G3 - 3 bed	2
Type G3 - 2 bed	7
Type H1/H2 - 3 bed	2
Type H1/H2 - 3 bed	2
Type J1 - 2 bed	9
Type J1 - 3 bed	9
Type J2 - 2 bed	3
Type J2 - 3 bed	3
	132
TOTAL NO. OF UNITS	207

- EXTERNAL FINISHES**
- WALLS:** PAINTED SAND / CEMENT RENDER OR PROPRIETARY PRECOLOURED RENDER FINISH SELECTED BRICKWORK WHERE INDICATED ON DRAWINGS
 - WINDOWS:** SELECTED PROPRIETARY DOUBLE / TRIPLE GLAZED WINDOW SYSTEM WITH FRAMES TO APPROVED COLOUR OBSCURED GLAZING TO BATHROOMS AND EN-SUITES.
 - DOORS:** SELECTED PROPRIETARY DOORS AND GLAZED SIDE SCREENS TO APPROVED COLOUR.
 - RAINWATER GOODS:** uPVC OR POWDER COATED METAL GUTTERS AND RAINWATER PIPES TO SELECTED COLOUR.
 - MAIN ROOF:** CONCRETE ROOF TILES IN SELECTED COLOUR.
 - LOW LEVEL PROJECTION:** ZINC CANOPY TO ENTRANCE OF UNITS
 - OTHER ITEMS:** uPVC OR POWDER COATED METAL FASCIAS, SOFFITS AND BARGE BOARDS PAINTED MILDSTEEL RAILINGS AND BALUSTRADES

G1.A [2 Bed] - Ground floor area	78.3 m²
G1.B [3 Bed] - First floor area	53.2 m²
Second floor area	53.2 m²
Total Floor Area (G1.B):	106.3 m²

REFER TO LANDSCAPE ARCHITECT'S DRAWINGS FOR ALL LANDSCAPING DETAILS

DUPLEX TYPE G1 HANDED

Notes	Issue Status	No.	Date	Revision	Initials
1. Copyright Reserved	Progress	01	14.10.2022	ISSUED FOR PLANNING	ED
2. Work to signed dimensions only. Do not scale drawing.	Planning Application				
3. The contractor is responsible for checking all levels and dimensions on site and shall refer all discrepancies to the Architect	Fire Cert				
4. Where appropriate, for details of r.c. structure, or mechanical and electrical details, see Engineers drawings	Disability Cert				
5. Proprietary items shall be fixed in strict accordance with manufacturers instructions.	Tender				
6. Sizes of proprietary items shall be checked with manufacturer.	Construction				
7. The contractor shall be responsible for the coordination of structure, finishes and services.	Information Only				

Project: **Aderrig Phase 3 Adamstown SDZ Residential Development**

Drawing Title: Duplex Type G1 (mid terrace) Handed-Plans, Section

Drawing No: 6259A-P-208

Scale: 1:100@A1 Rev: 01 Drawn: IFJ; ED Date: 14/10/22

Project: **bkd architects**
BURKE-KENNEDY DOYLE

6-7 HARDCOURT TERRACE, DUBLIN 2, IRELAND
t+353-1-618 2400 f+353-1-676 7305
e.architecture@bkd.ie
www.bkd.ie