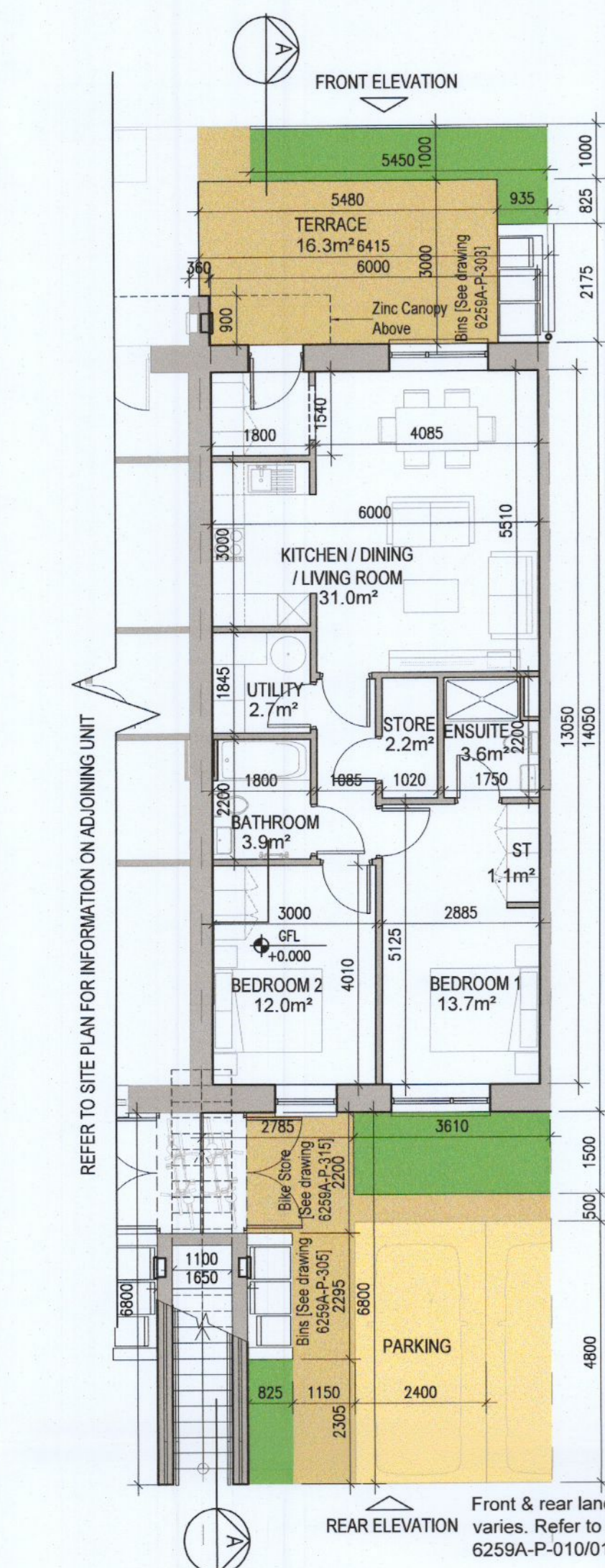
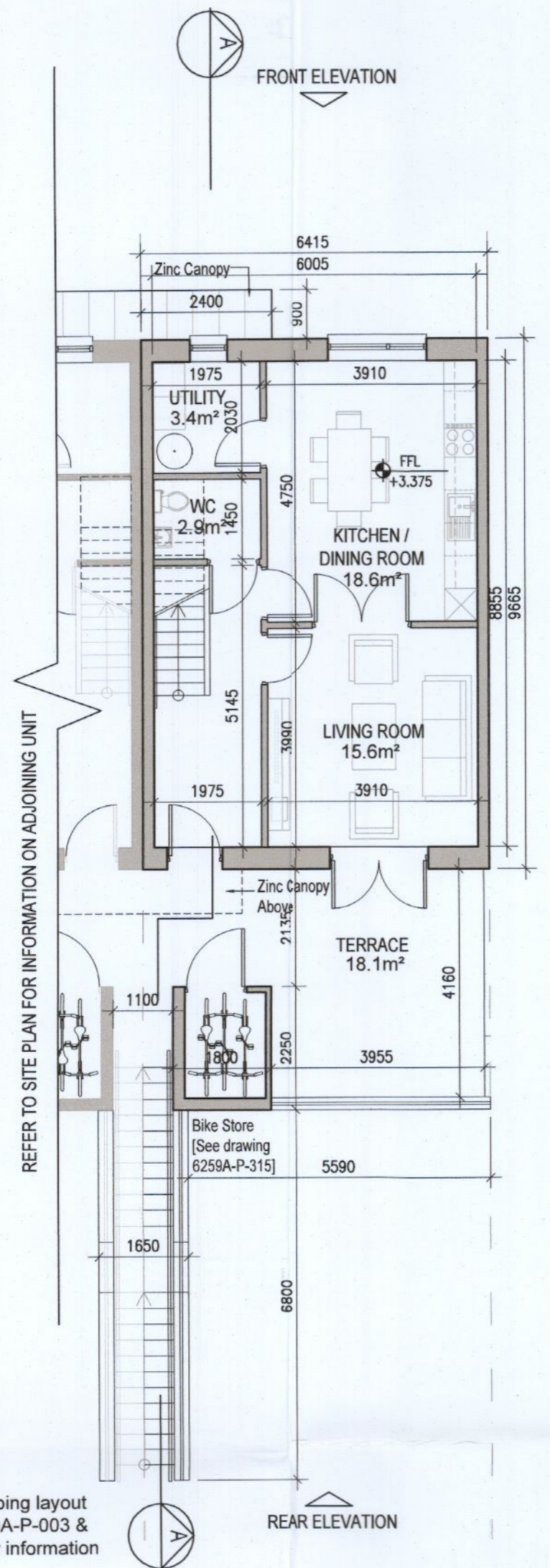


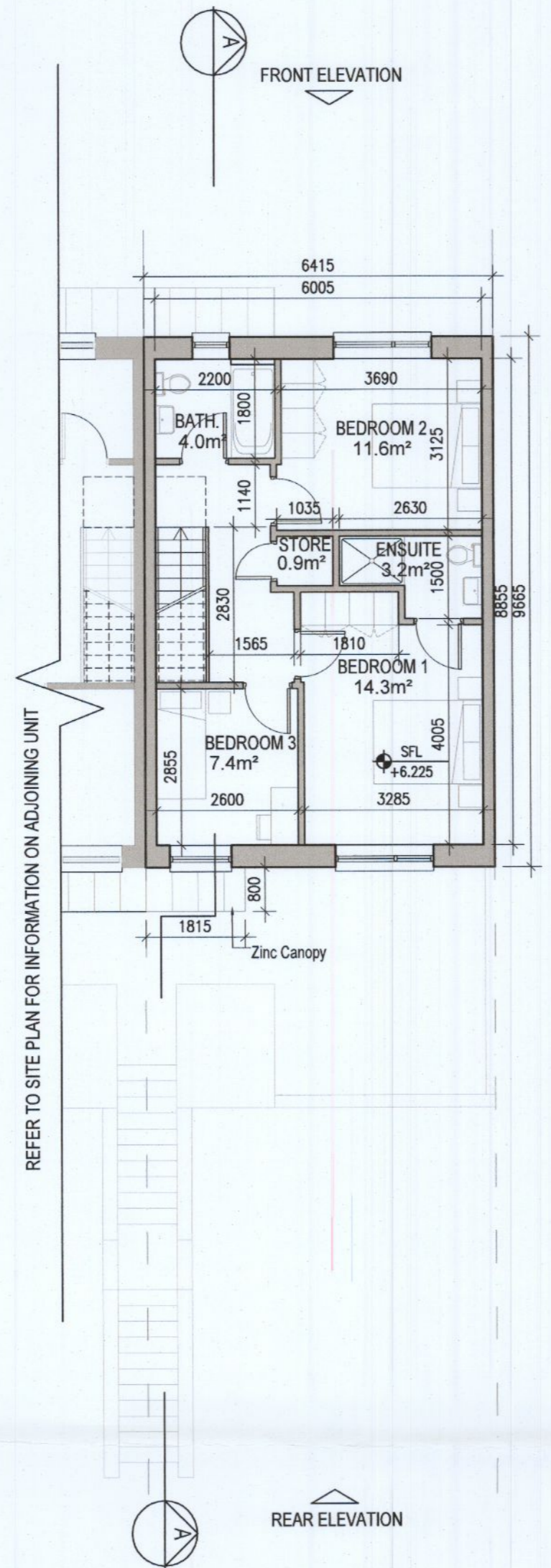
**DUPLEX TYPE G1**



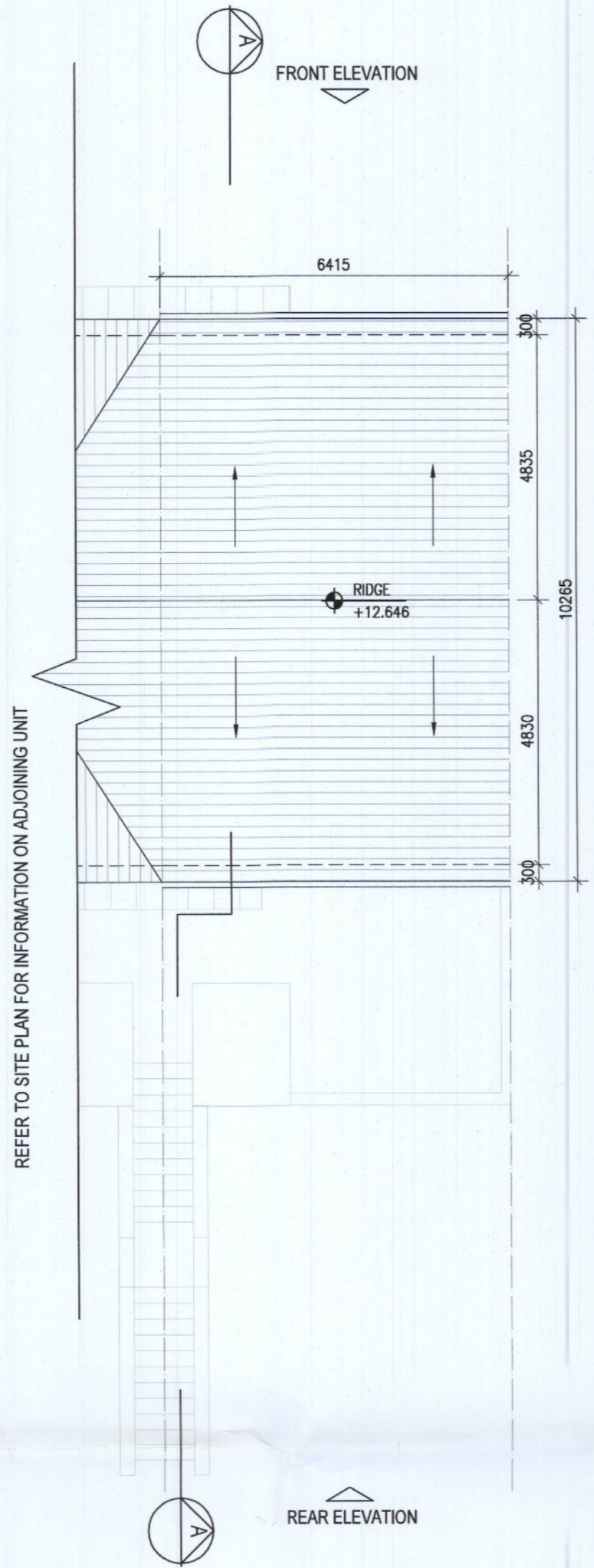
01 Ground Floor Plan [G1.A]



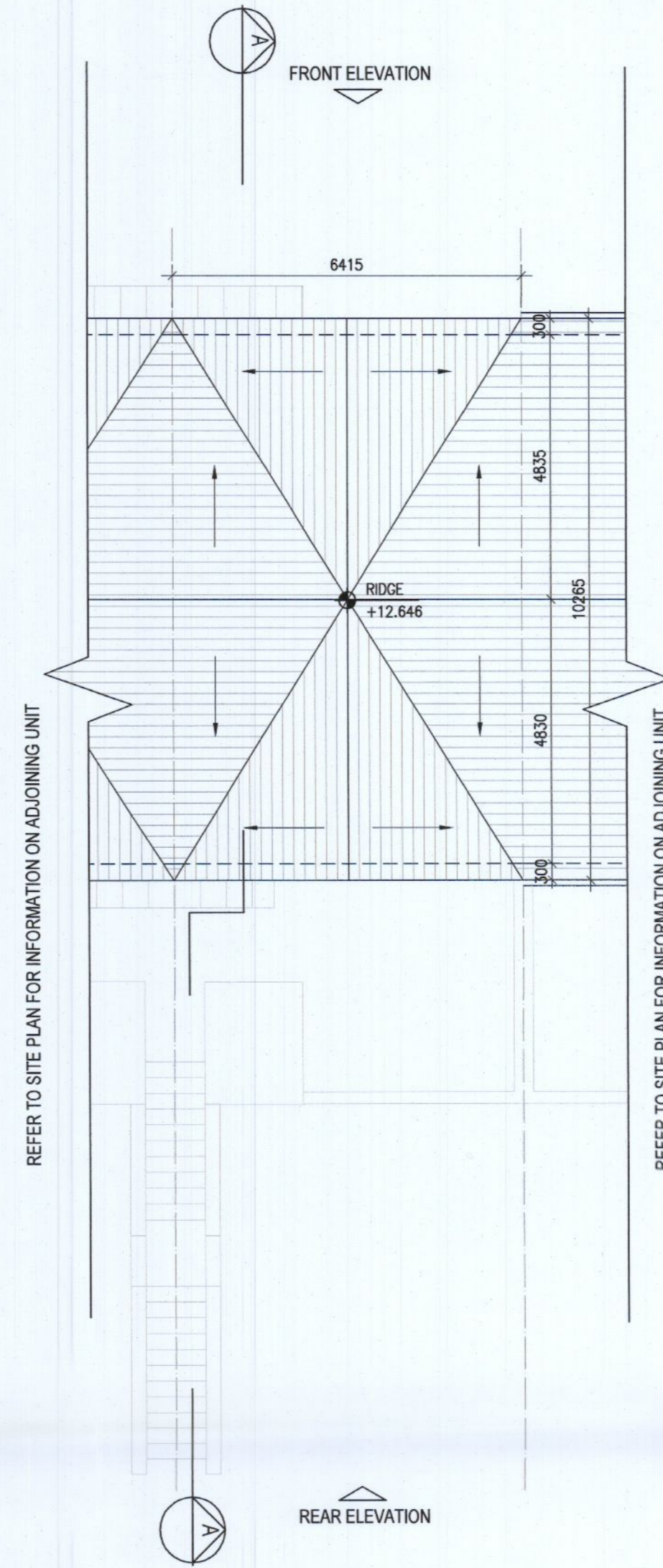
02 First Floor Plan [G1.B]



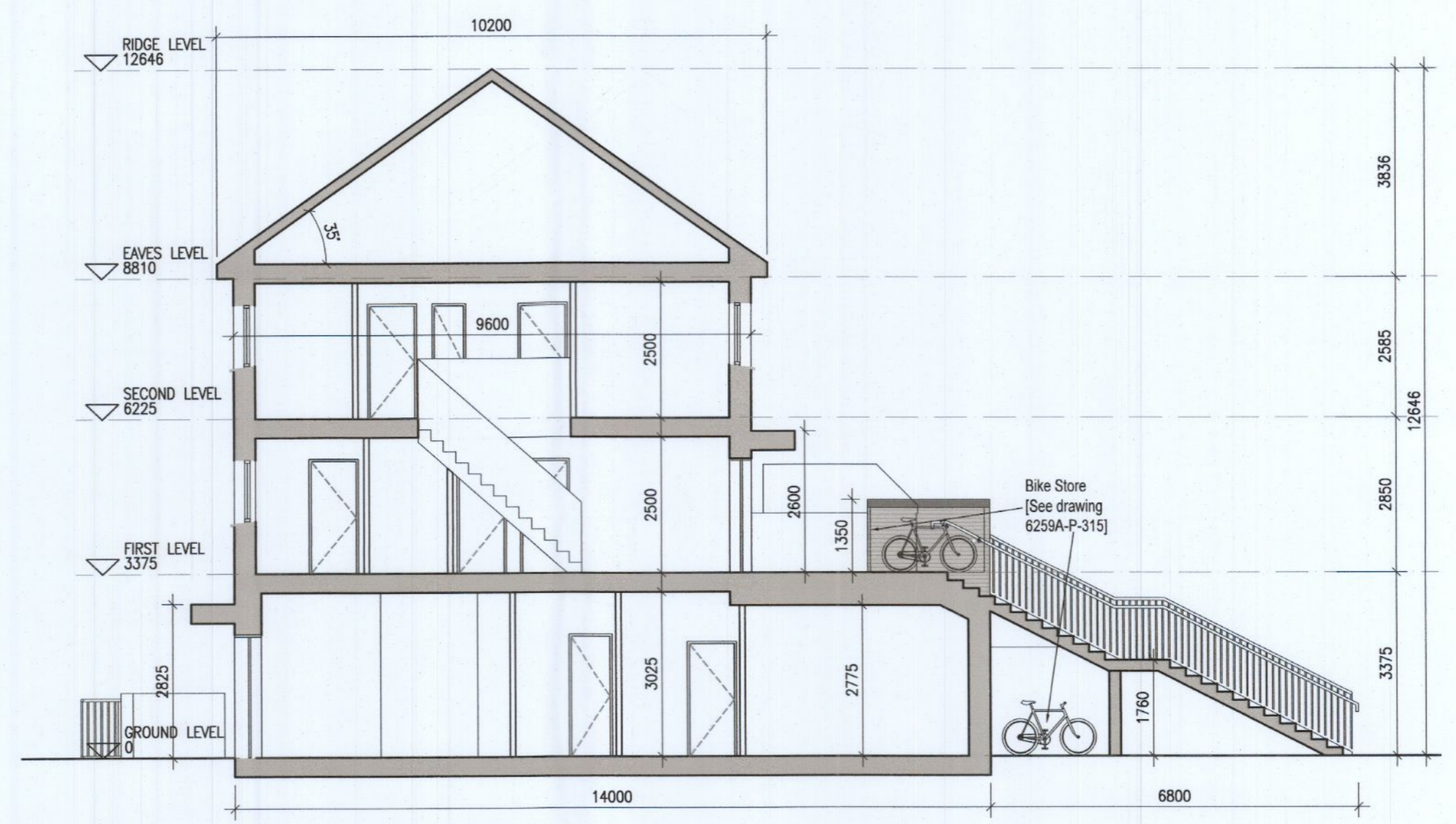
03 Second Floor Plan [G1.B]



04 Roof Floor Plan G1.1, G1.2, G1.3 & G1.4  
1:100@A1



05 Roof Floor Plan G1.5  
1:100@A1



06 Typical Section [A-A]  
1:100@A1



**Indicates unit locations  
KEY PLAN [NTS]**

HOUSE TYPES	No. OF UNITS
Type A1/A2 - 3 bed	16
Type B1/B2 - 3 bed	28
Type C1/C2/C3 - 3 bed	15
Type D - 4 bed	3
Type E1/E2 - 4 bed	7
Type K1/K2 - 4 bed	6
	75

DUPLEX	No. OF UNITS
Type F1 - 2 bed	3
Type F2 - 2 bed	3
Type F3 - 3 bed	1
Type F3 - 3 bed	6
Type G1 - 2 bed	33
Type G2 - 3 bed	33
Type G3 - 3 bed	2
Type G3 - 3 bed	7
Type H1/H2 - 3 bed	2
Type H1/H2 - 3 bed	2
Type J1 - 2 bed	9
Type J1 - 3 bed	9
Type J2 - 2 bed	3
Type J2 - 3 bed	3
	132
<b>TOTAL NO. OF UNITS</b>	<b>207</b>

- EXTERNAL FINISHES**
- WALLS:** PAINTED SAND / CEMENT RENDER OR PROPRIETARY PRECOLOURED RENDER FINISH SELECTED BRICKWORK WHERE INDICATED ON DRAWINGS
  - WINDOWS:** SELECTED PROPRIETARY DOUBLE / TRIPLE GLAZED WINDOW SYSTEM WITH FRAMES TO APPROVED COLOUR OBTAINED BY GLAZING TO BATHROOMS AND EN-SUITES.
  - DOORS:** SELECTED PROPRIETARY DOORS AND GLAZED SIDE SCREENS TO APPROVED COLOUR.
  - RAINWATER GOODS:** uPVC OR POWDER COATED METAL GUTTERS AND RAINWATER PIPES TO SELECTED COLOUR.
  - MAIN ROOF:** CONCRETE ROOF TILES IN SELECTED COLOUR.
  - LOW LEVEL PROJECTION:** ZINC CANOPY TO ENTRANCE OF UNITS
  - OTHER ITEMS:** uPVC OR POWDER COATED METAL FASCIAS, SOFFITS AND BARGE BOARDS PAINTED MILDSTEEL RAILINGS AND BALUSTRADES

G1.A [2 Bed] - Ground floor area	78.3 m²
G1.B [3 Bed] - First floor area	53.2 m²
Second floor area	53.2 m²
<b>Total Floor Area (G1.B):</b>	<b>106.3 m²</b>

**REFER TO LANDSCAPE ARCHITECT'S DRAWINGS FOR ALL LANDSCAPING DETAILS**

**DUPLEX TYPE G1**

- Notes**
- Copyright Reserved
  - Work to signed dimensions only. Do not scale drawing
  - The contractor is responsible for checking all levels and dimensions on site and shall refer all discrepancies to the Architect
  - Where appropriate, for details of f.c. structure, or mechanical and electrical details, see Engineers drawings
  - Proprietary items shall be fixed in strict accordance with manufacturers instructions.
  - Sizes of proprietary items shall be checked with manufacturers.
  - The contractor shall be responsible for the coordination of structure, finishes and services.

Issue Status	Progress
Planning Application	■
Fire Cert	
Disability Cert	
Tender	
Construction	
As Built	
Information Only	

No.	Date	Revision	Initials
01	14.10.2022	ISSUED FOR PLANNING	ED

Project	<b>Aderrig Phase 3 Adamstown SDZ Residential Development</b>
Drawing Title	Duplex Type G1 (mid terrace) Non-handed-Plans, Section
Drawing No	6259A-P-206
Scale	1:100@A1
Rev	01
Drawn	IFJ, ED
Date	14/10/22

6-7 HARcourt TERRACE, DUBLIN 2, IRELAND  
 T +353 1 618 2400 F +353 1 676 7386  
 www.bkd.ie  
**bkd architects**  
 BURKE-KENNEDY DOYLE