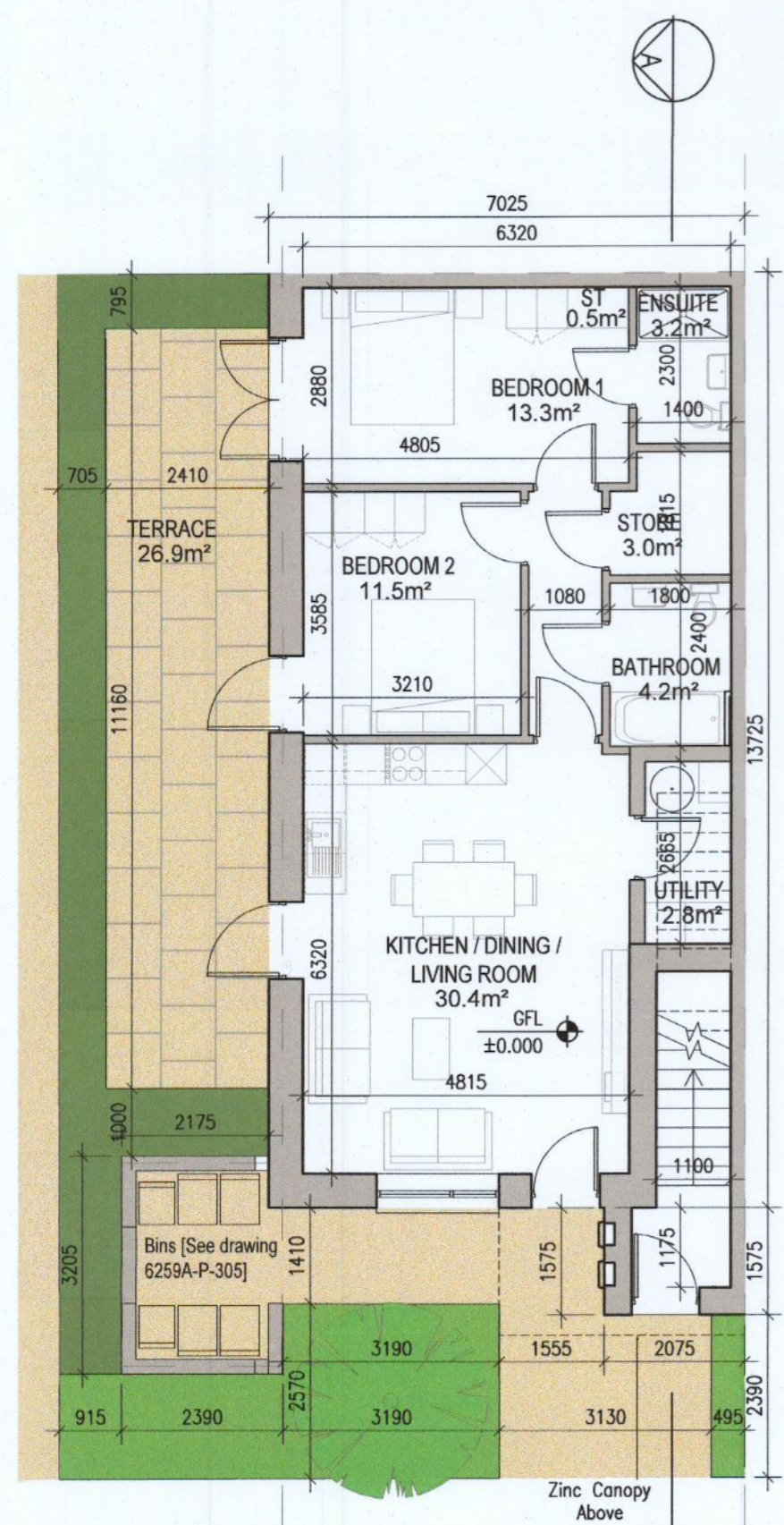
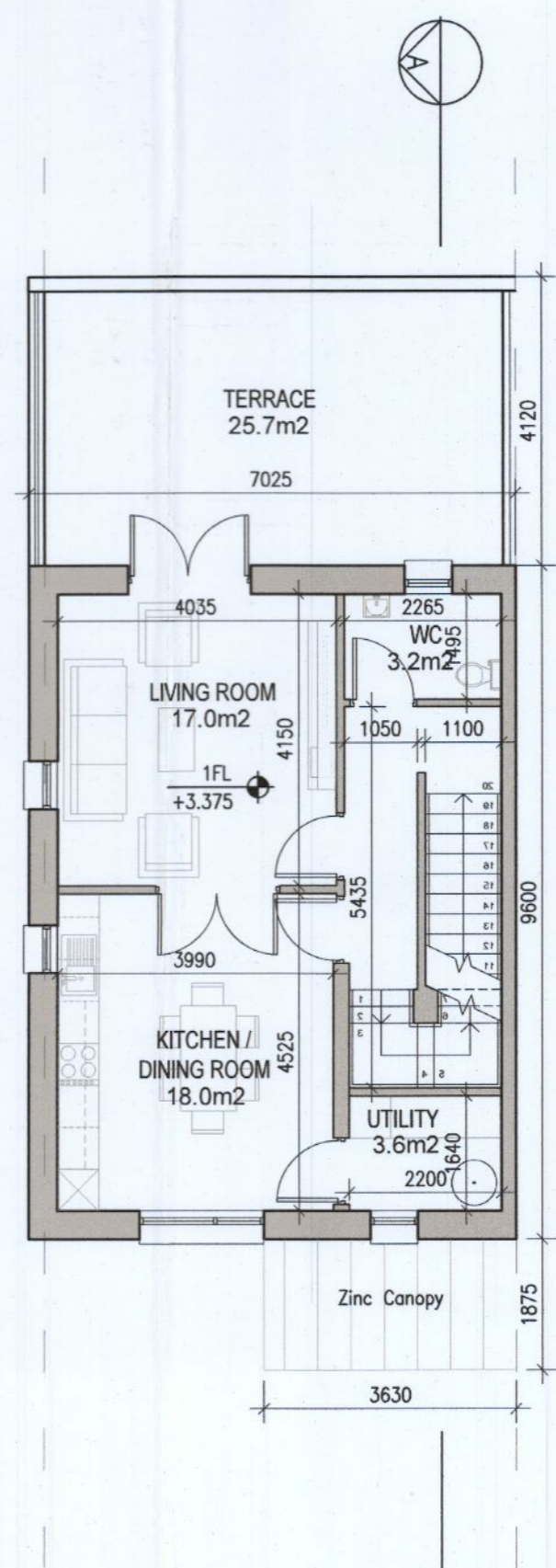


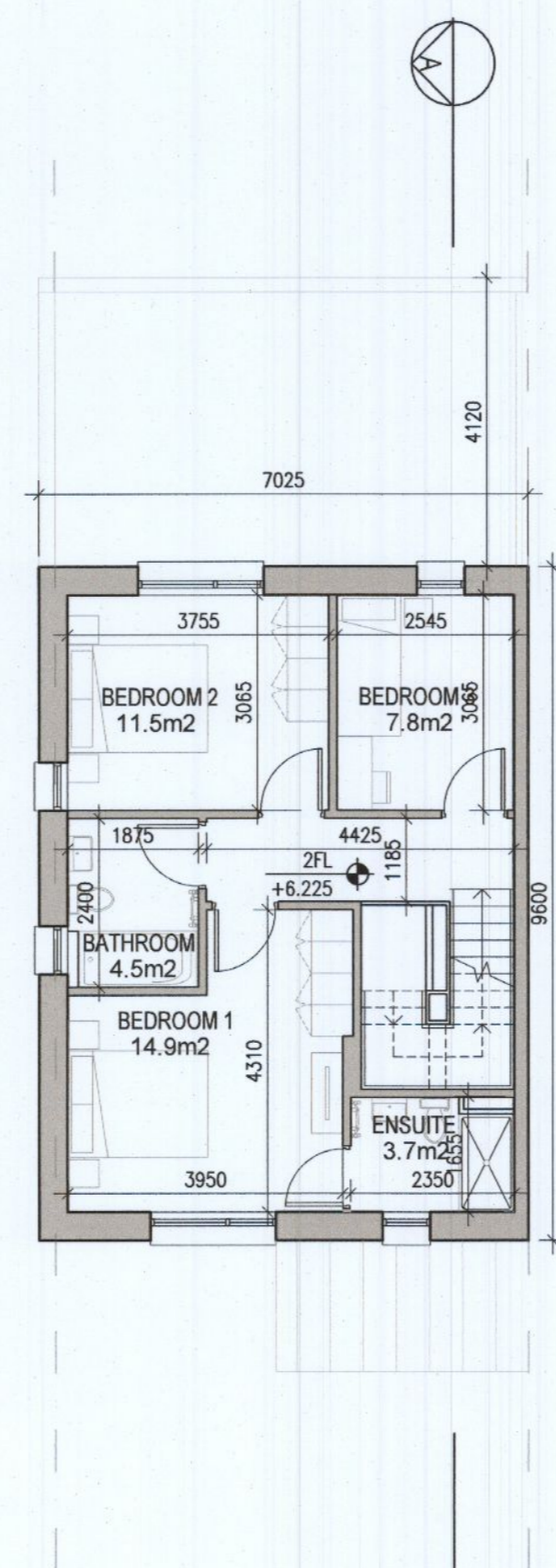
DUPLEX TYPE F3 HANDED



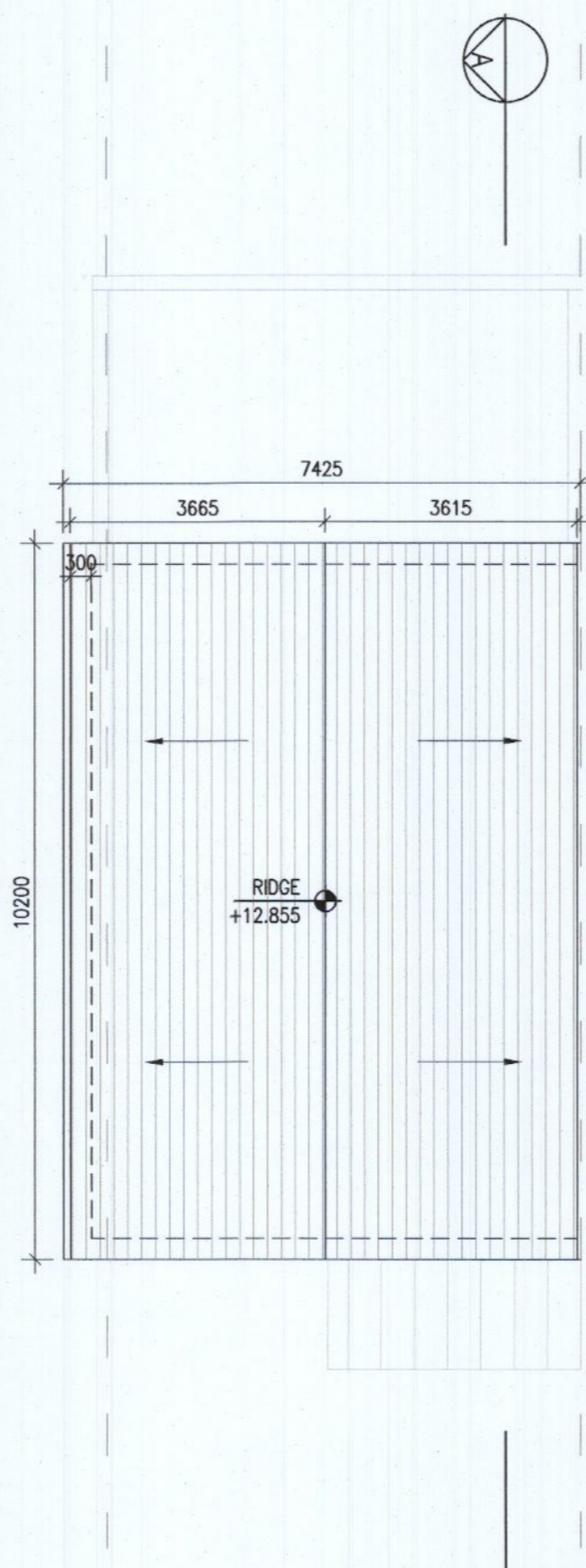
01 Ground Floor Plan [F3.A]
1:100@A1



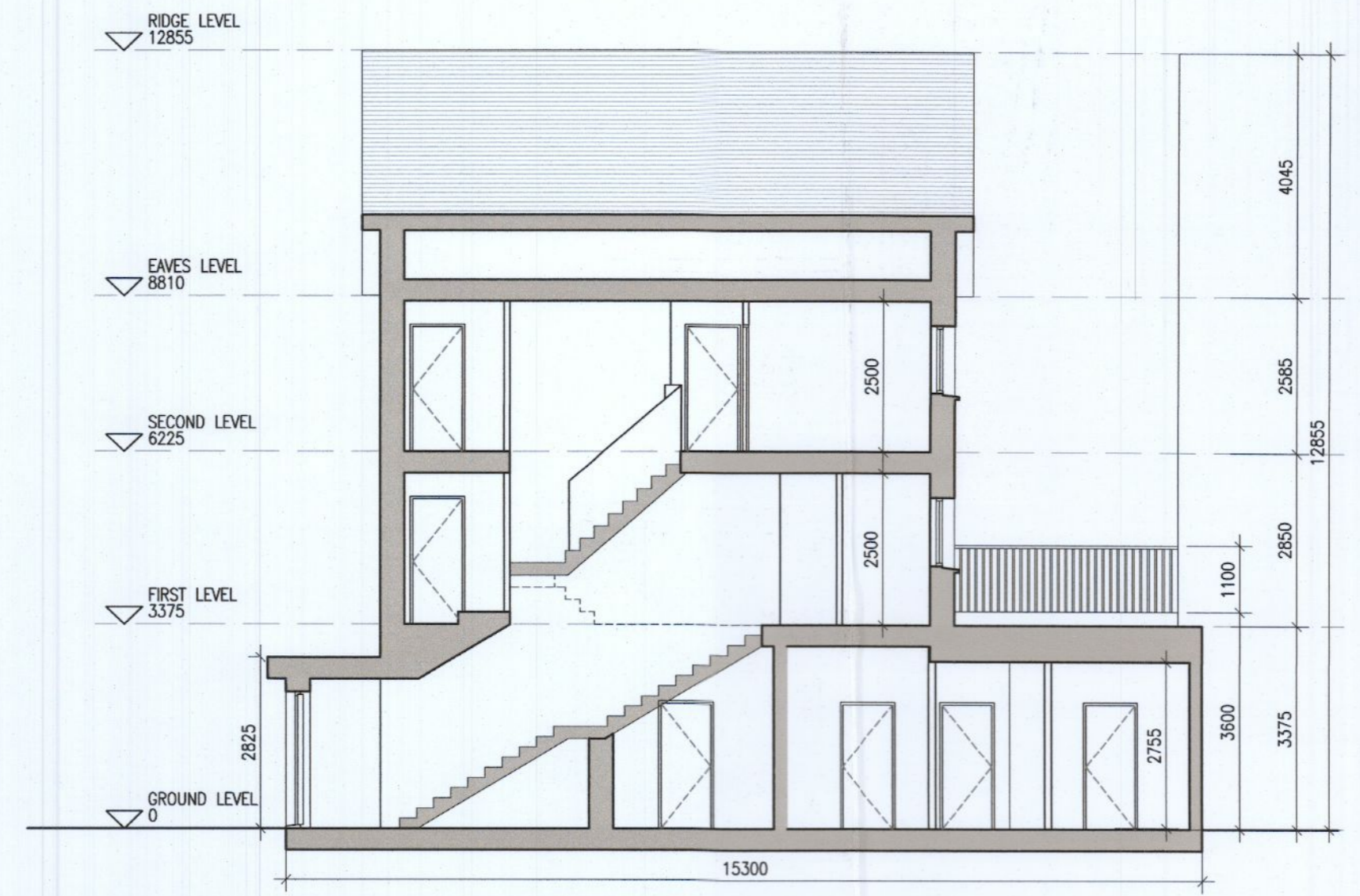
02 First Floor Plan [F3.B]
1:100@A1



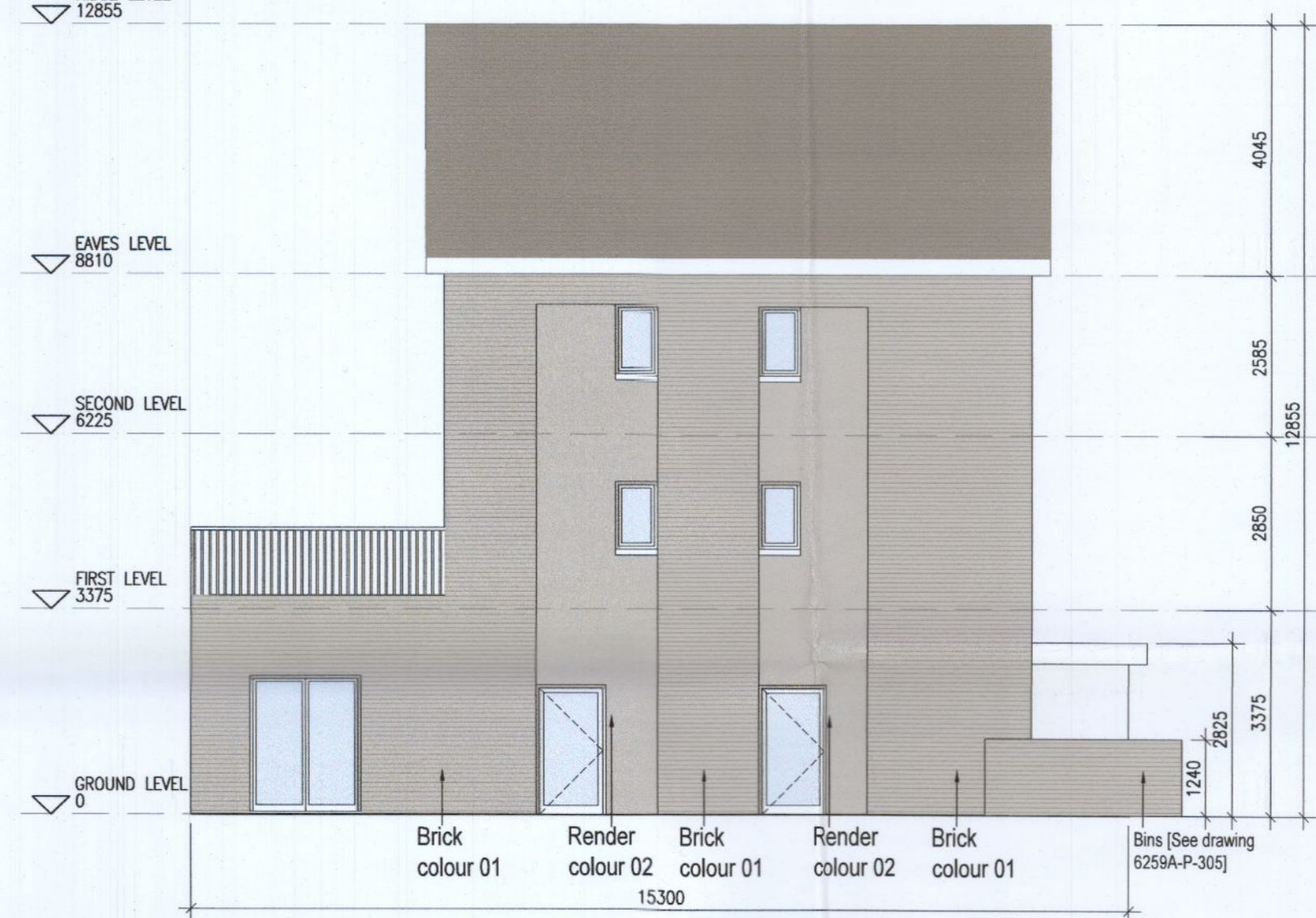
03 Second Floor Plan F3.B
1:100@A1



04 Roof Floor Plan
1:100@A1

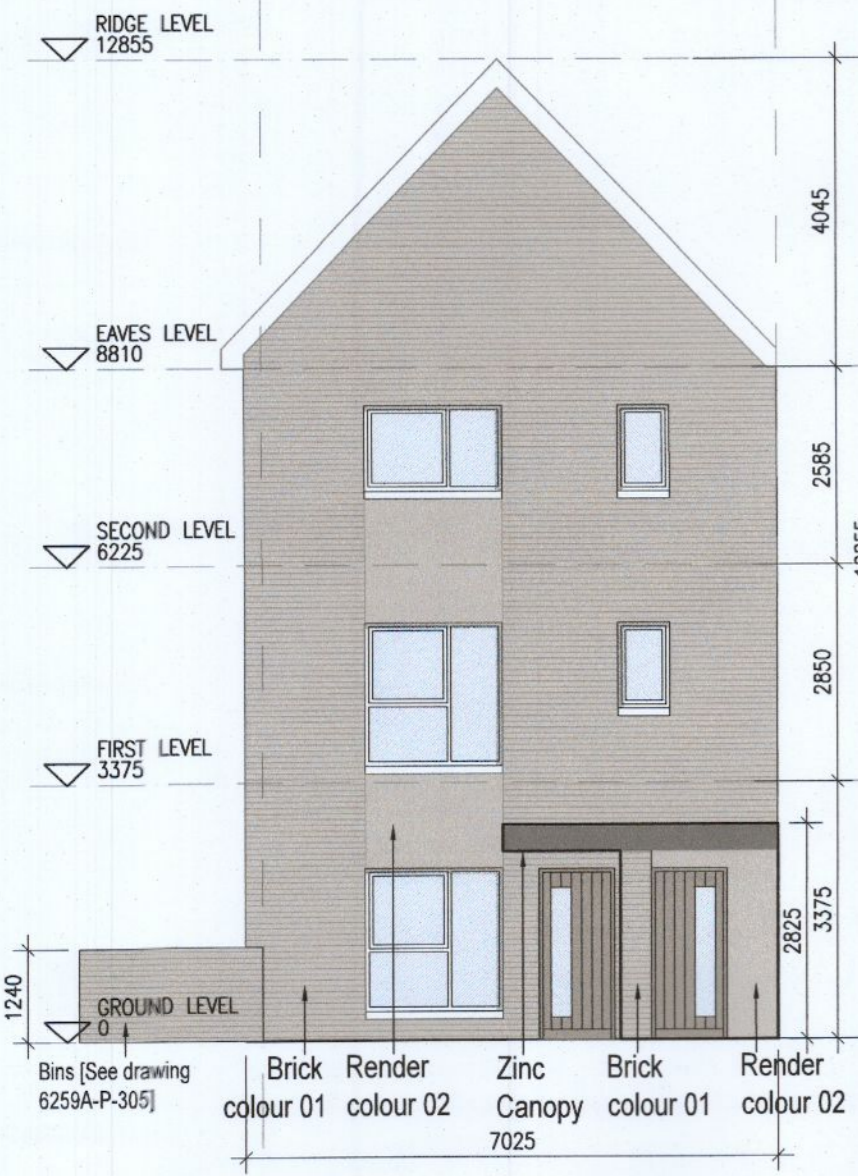


05 Typical Section [A-A]
1:100@A1

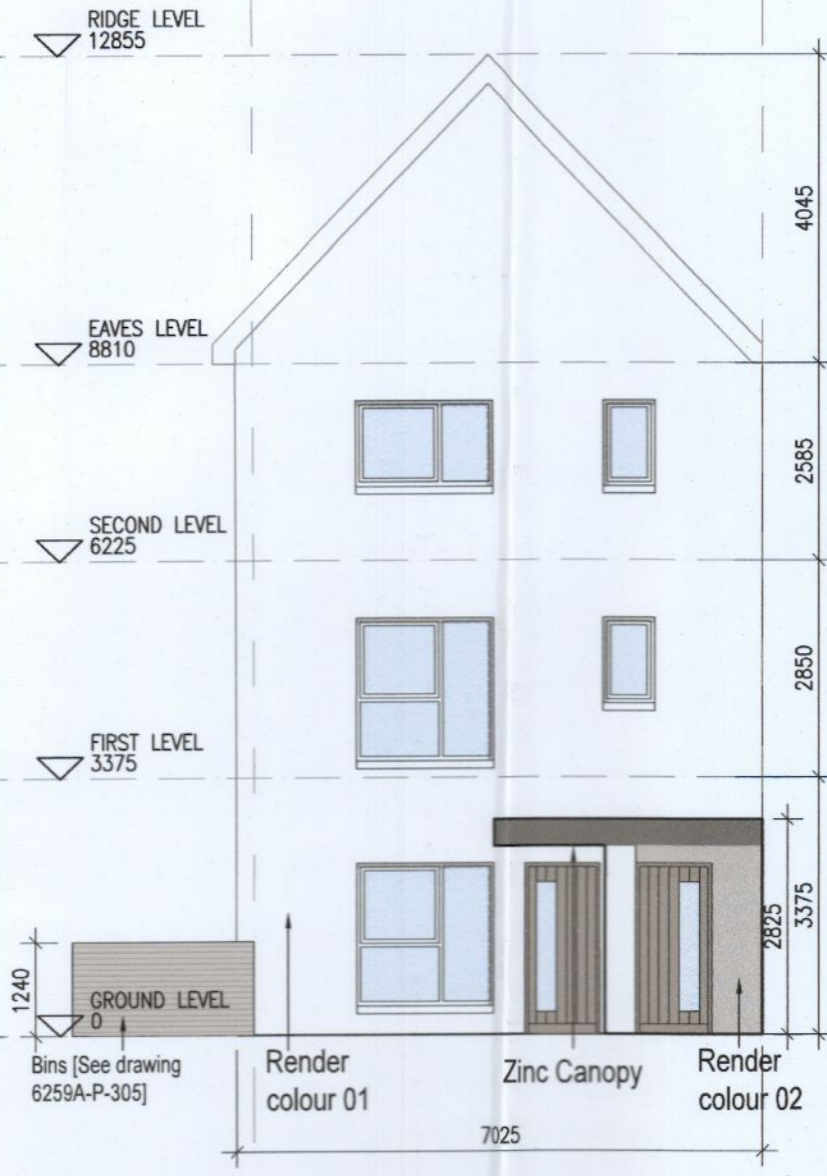


06 Side Elevation F3.1
1:100@A1

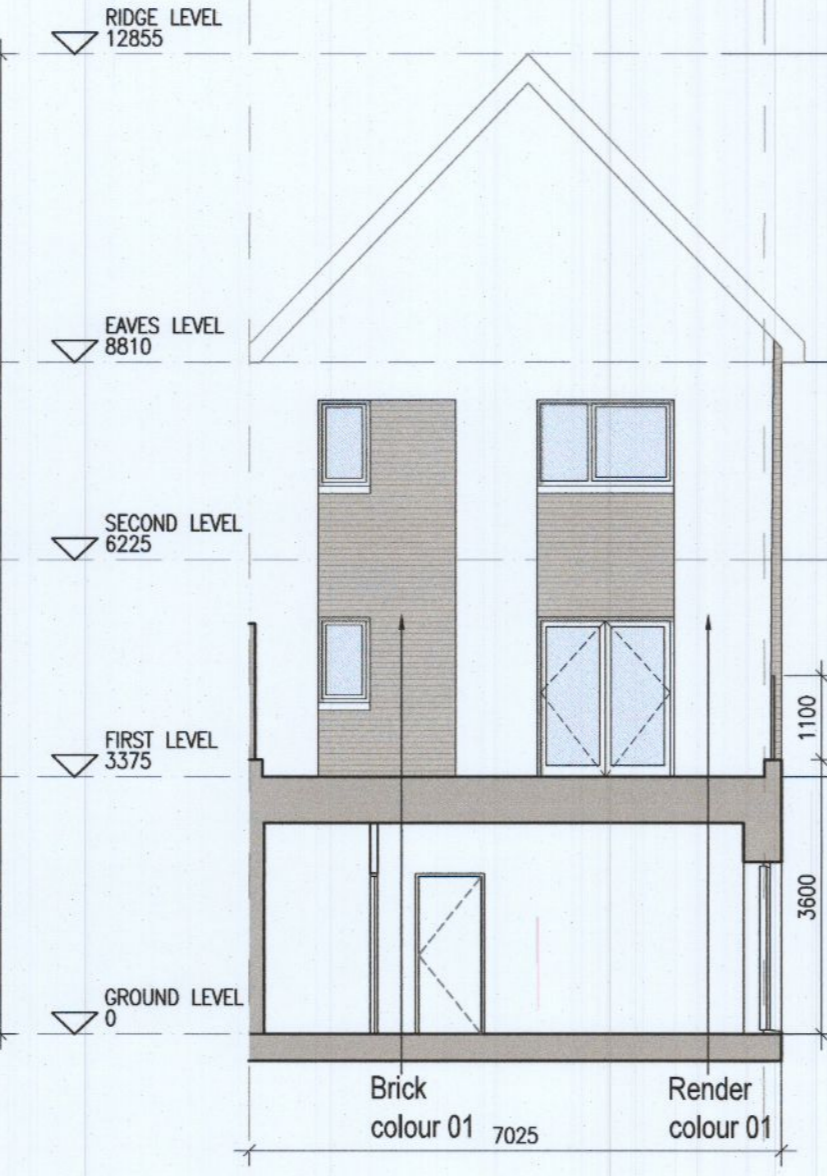
REFER TO STREET ELEVATIONS FOR LOCATIONS OF EACH ELEVATION VARIATION



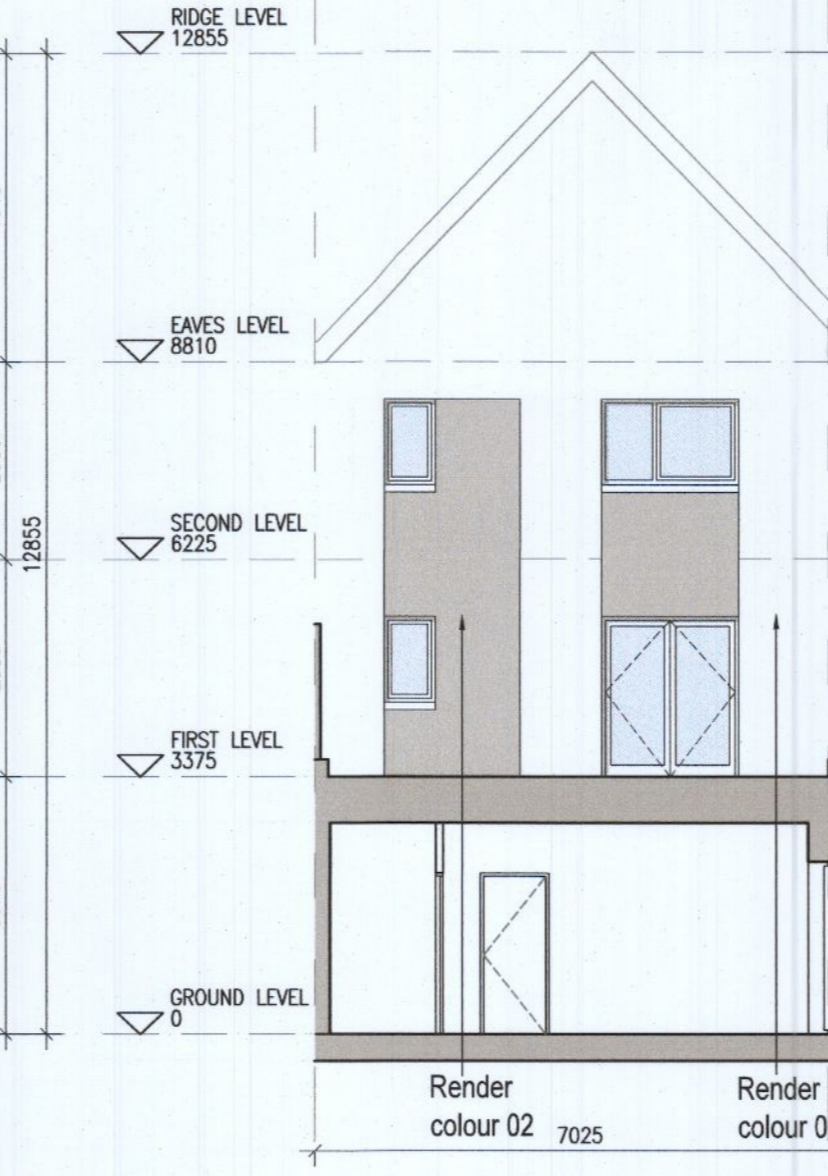
08 Front Elevation F3.1
1:100@A1



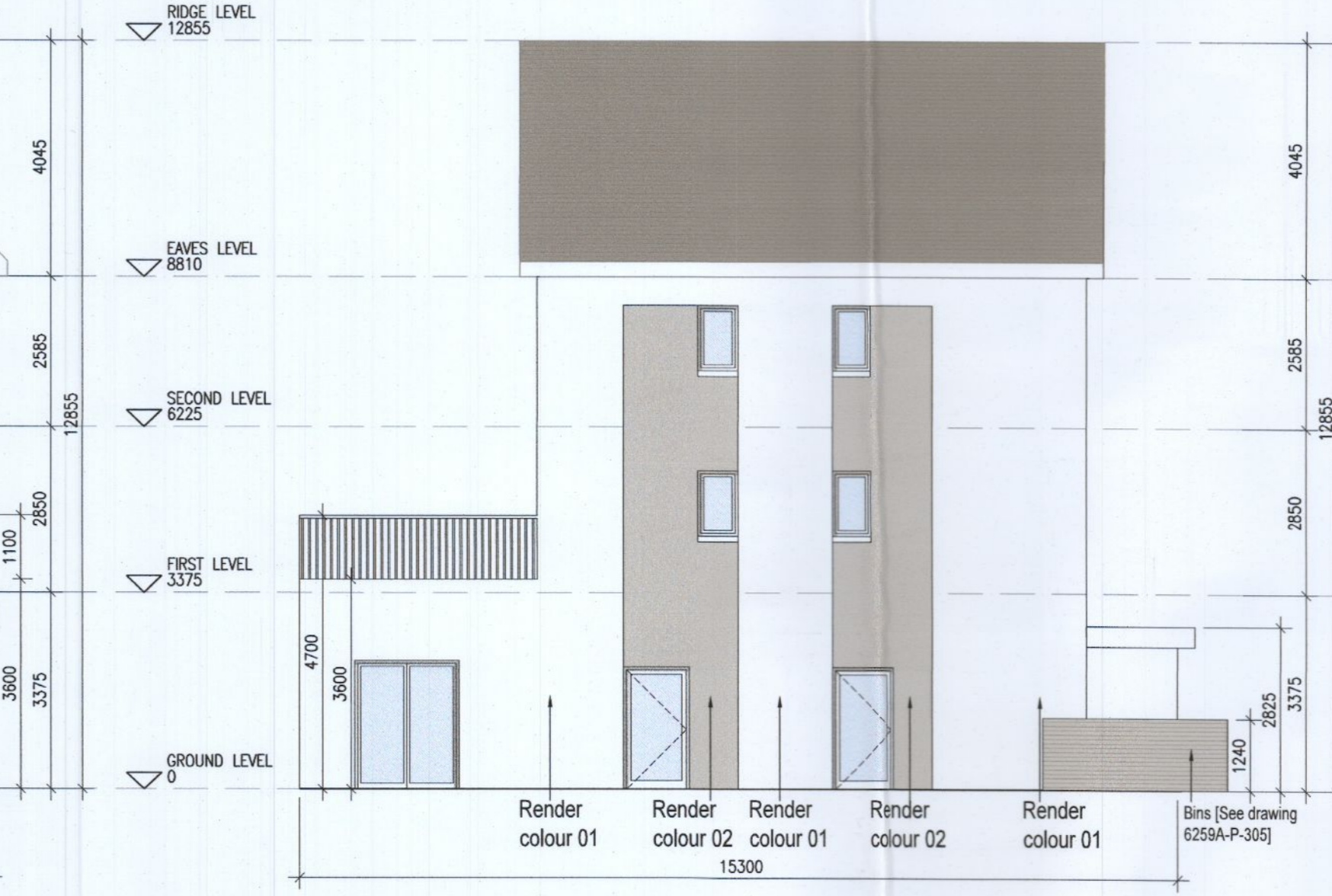
09 Front Elevation F3.2
1:100@A1



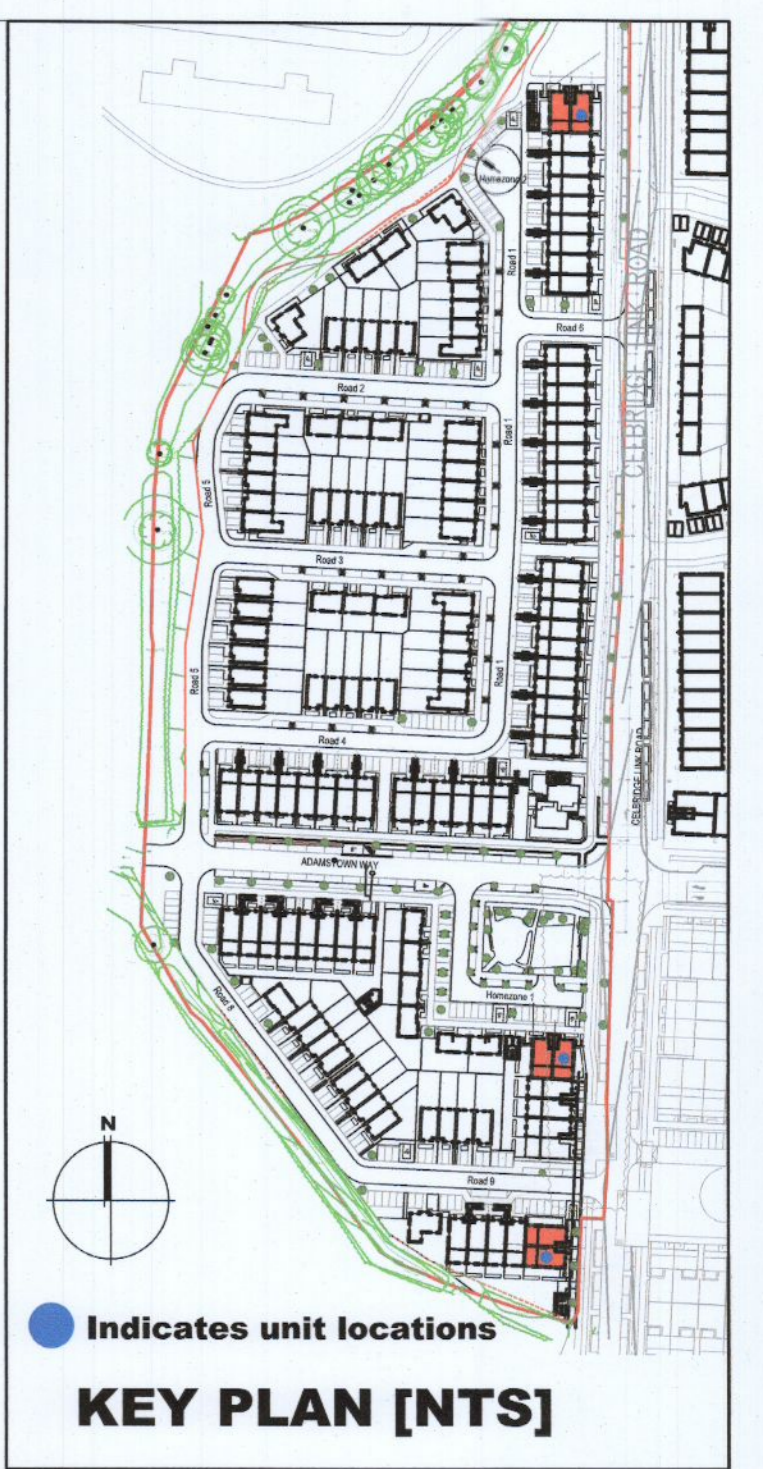
10 Rear Elevation G3.1
1:100@A1



11 Rear Elevation G3.2
1:100@A1



07 Side Elevation F3.2
1:100@A1



HOUSE TYPES	No. OF UNITS
Type A1/A2 - 3 bed	16
Type B1/B2 - 3 bed	28
Type C1/C2/C3 - 3 bed	15
Type D - 4 bed	3
Type E1/E2 - 4 bed	7
Type K1/K2 - 4 bed	6
Total	75

DUPLEX	No. OF UNITS
Type F1 - 2 bed	3
Type F2 - 3 bed	3
Type F3 - 2 bed	1
Type G1 - 2 bed	6
Type G2 - 2 bed	33
Type G3 - 2 bed	33
Type H1/H2 - 3 bed	2
Type H3 - 3 bed	7
Type J1 - 2 bed	2
Type J2 - 3 bed	2
Type J3 - 2 bed	9
Type J4 - 3 bed	9
Type J5 - 2 bed	3
Type J6 - 3 bed	3
Total No. of Units	132

TOTAL NO. OF UNITS 207

- EXTERNAL FINISHES**
- WALLS:** PAINTED SAND / CEMENT RENDER OR PROPRIETARY PRECOLOURED RENDER FINISH SELECTED BRICKWORK WHERE INDICATED ON DRAWINGS
 - WINDOWS:** SELECTED PROPRIETARY DOUBLE / TRIPLE GLAZED WINDOW SYSTEM WITH FRAMES TO APPROVED COLOUR OBSCURED GLAZING TO BATHROOMS AND EN-SUITES.
 - DOORS:** SELECTED PROPRIETARY DOORS AND GLAZED SIDE SCREENS TO APPROVED COLOUR.
 - RAINWATER GOODS:** uPVC OR POWDER COATED METAL GUTTERS AND RAINWATER PIPES TO SELECTED COLOUR.
 - MAIN ROOF:** CONCRETE ROOF TILES IN SELECTED COLOUR.
 - LOW LEVEL PROJECTION:** ZINC CANOPY TO ENTRANCE OF UNITS
 - OTHER ITEMS:** uPVC OR POWDER COATED METAL FASCIA, SOFFITS AND BARGE BOARDS PAINTED. MILDSTEEL RAILINGS AND BALUSTRADES

F3.A [2 Bed] - Ground floor area	77.2 m²
F3.B [3 Bed] - Ground floor area	5.6 m²
First floor area	56.4 m²
Second floor area	56.4 m²
Total Floor Area (F3.B):	118.3 m²

REFER TO LANDSCAPE ARCHITECT'S DRAWINGS FOR ALL LANDSCAPING DETAILS

DUPLEX TYPE F3 HANDED

- Notes**
- Copyright Reserved
 - Work to figured dimensions only. Do not scale drawing.
 - The contractor is responsible for checking all levels and dimensions on site and shall refer all discrepancies to the Architect
 - Where appropriate, for details of f.c. structure, or mechanical and electrical details, see Engineers drawings
 - Proprietary items shall be fixed in strict accordance with manufacturers instructions.
 - Sizes of proprietary items shall be checked with manufacturer.
 - The contractor shall be responsible for the coordination of structure, finishes and services.

Issue Status	Progress
Planning Application	■
Fire Cert	
Disability Cert	
Tender	
Construction	
As Built	
Information Only	

No.	Date	Revision	Initials
01	13/10/22	ISSUED FOR PLANNING	BKD

Project	Aderrig Phase 3 Adamstown SDZ Residential Development
Drawing Title	Duplex Type F3 (end terrace) Handed-Plans,Elevation,Section
Drawing No	6259A-P-205
Scale	1:100@A1
Rev	01
Drawn	IFJ
Date	OCT 2022

6-7 HARCOURT TERRACE, DUBLIN 2, IRELAND
t: +353-1-619 2400 f: +353-1-671 7885
e: architecture@bkd.ie
www.bkd.ie

bkd architects
BURKE-KENNEDY DOYLE