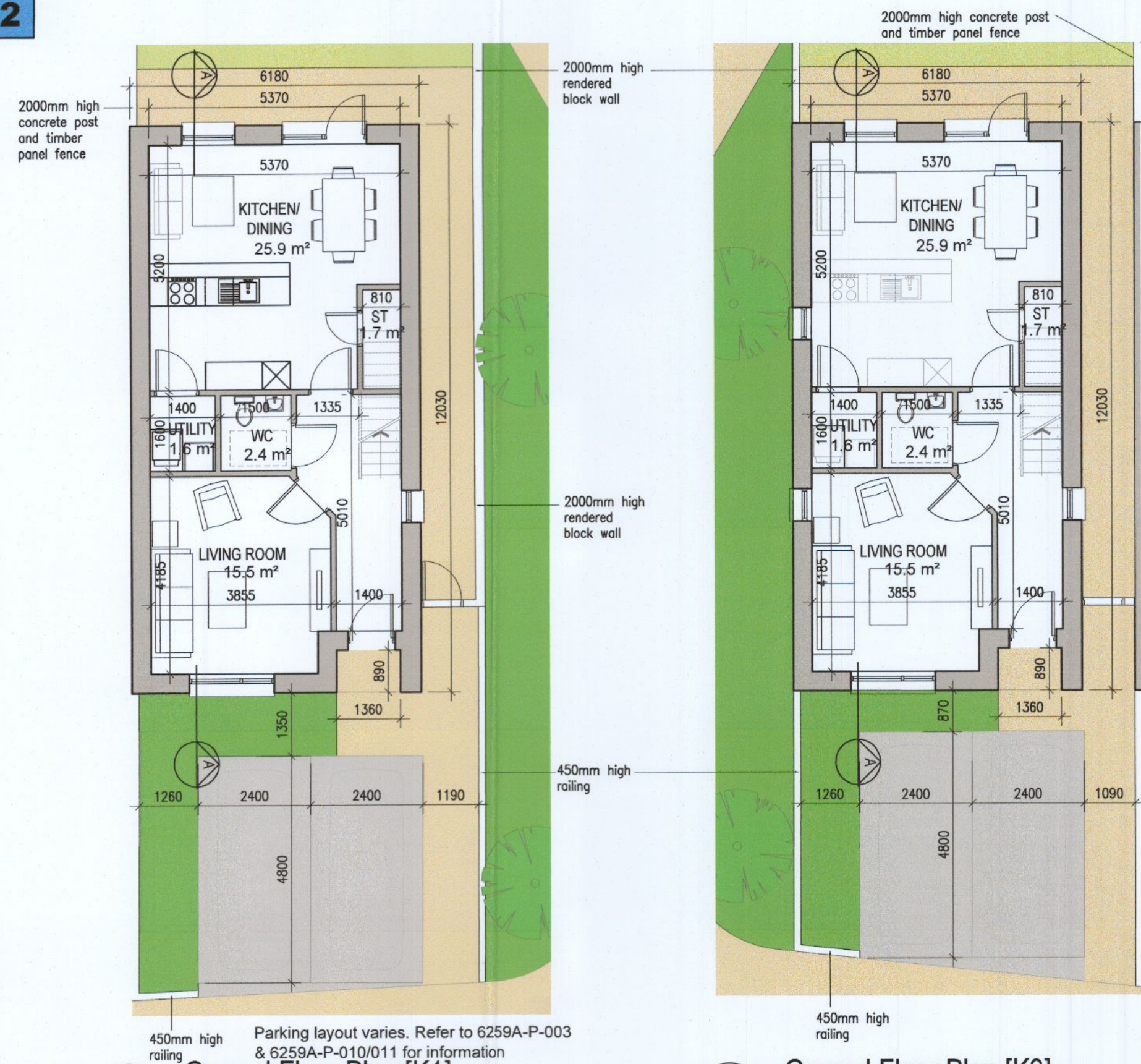
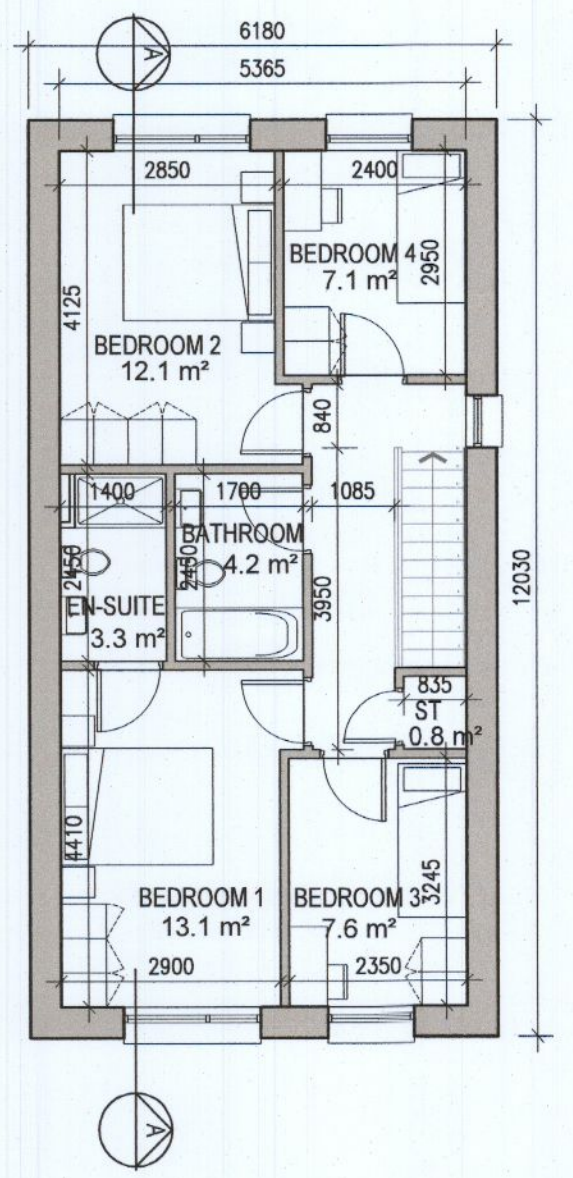


HOUSE TYPE K1 & K2

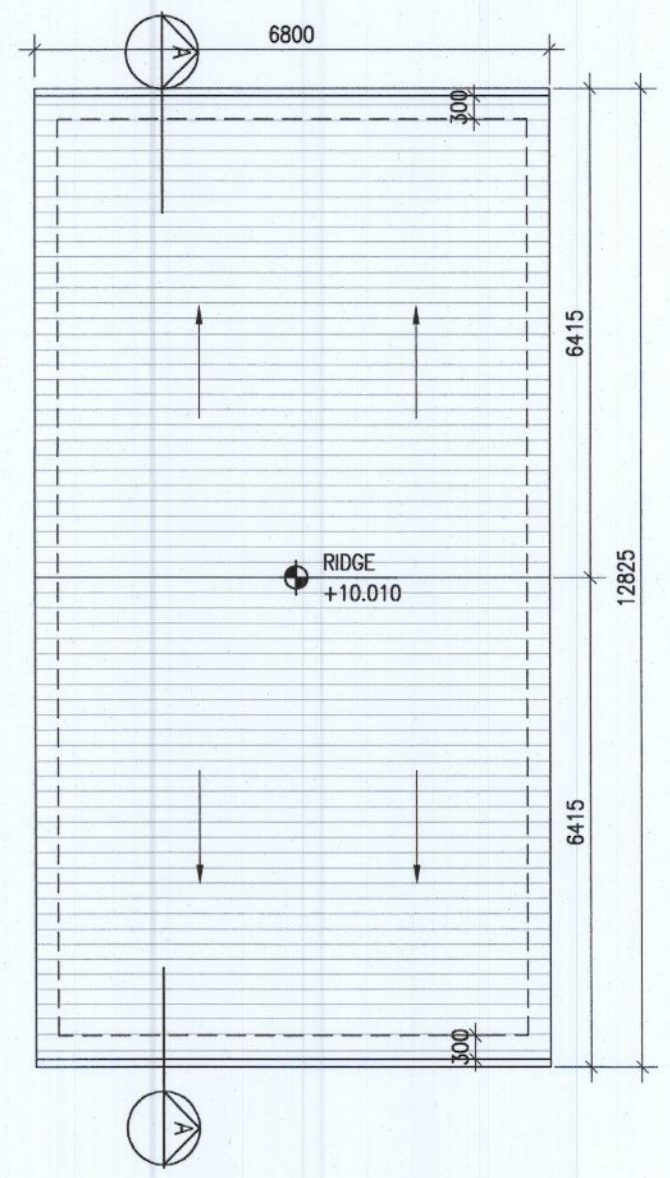


01 Ground Floor Plan [K1]

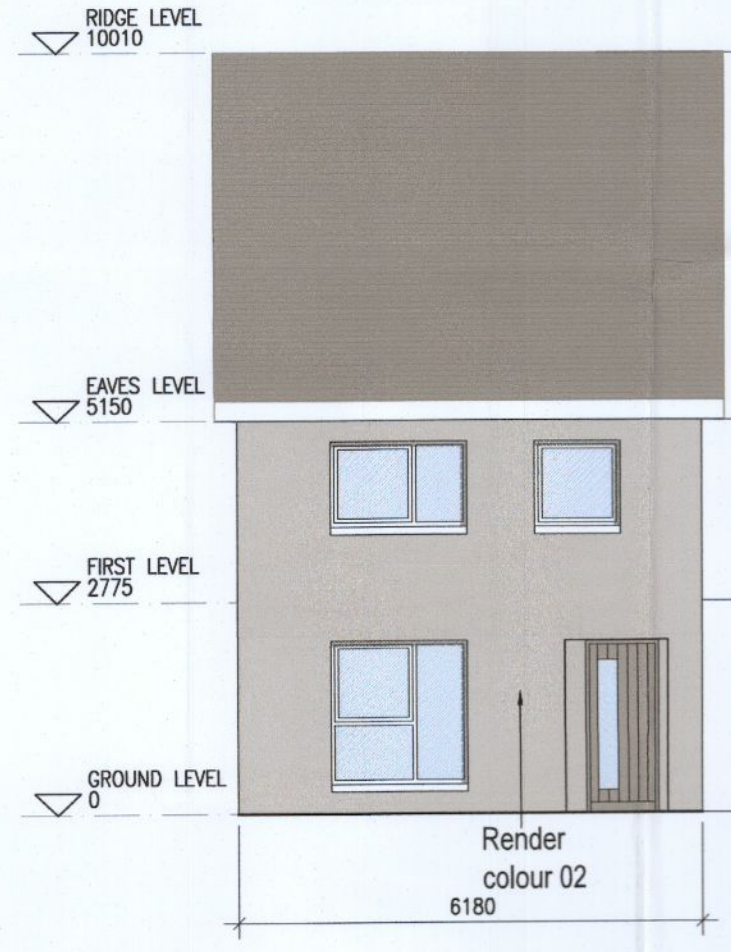
02 Ground Floor Plan [K2]



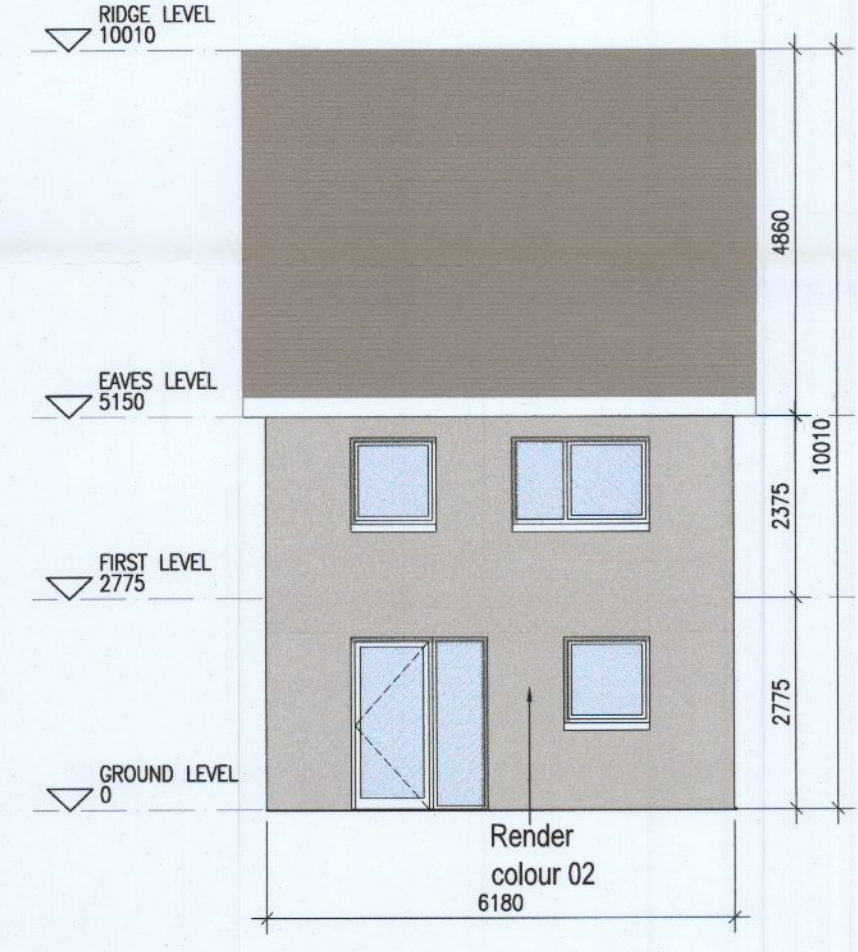
03 First Floor Plan [K1 & K2]



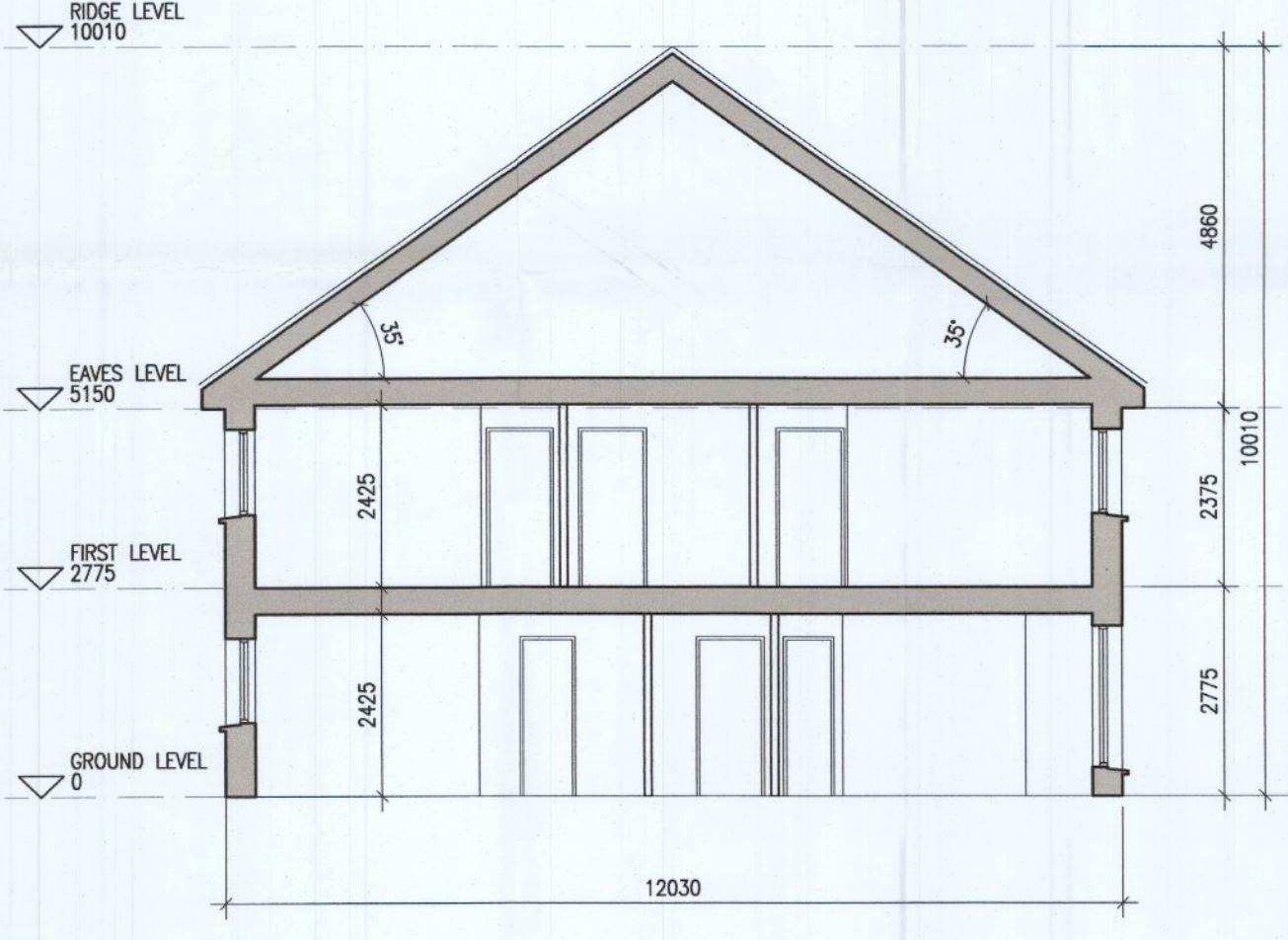
04 Roof Floor Plan [K1 & K2]



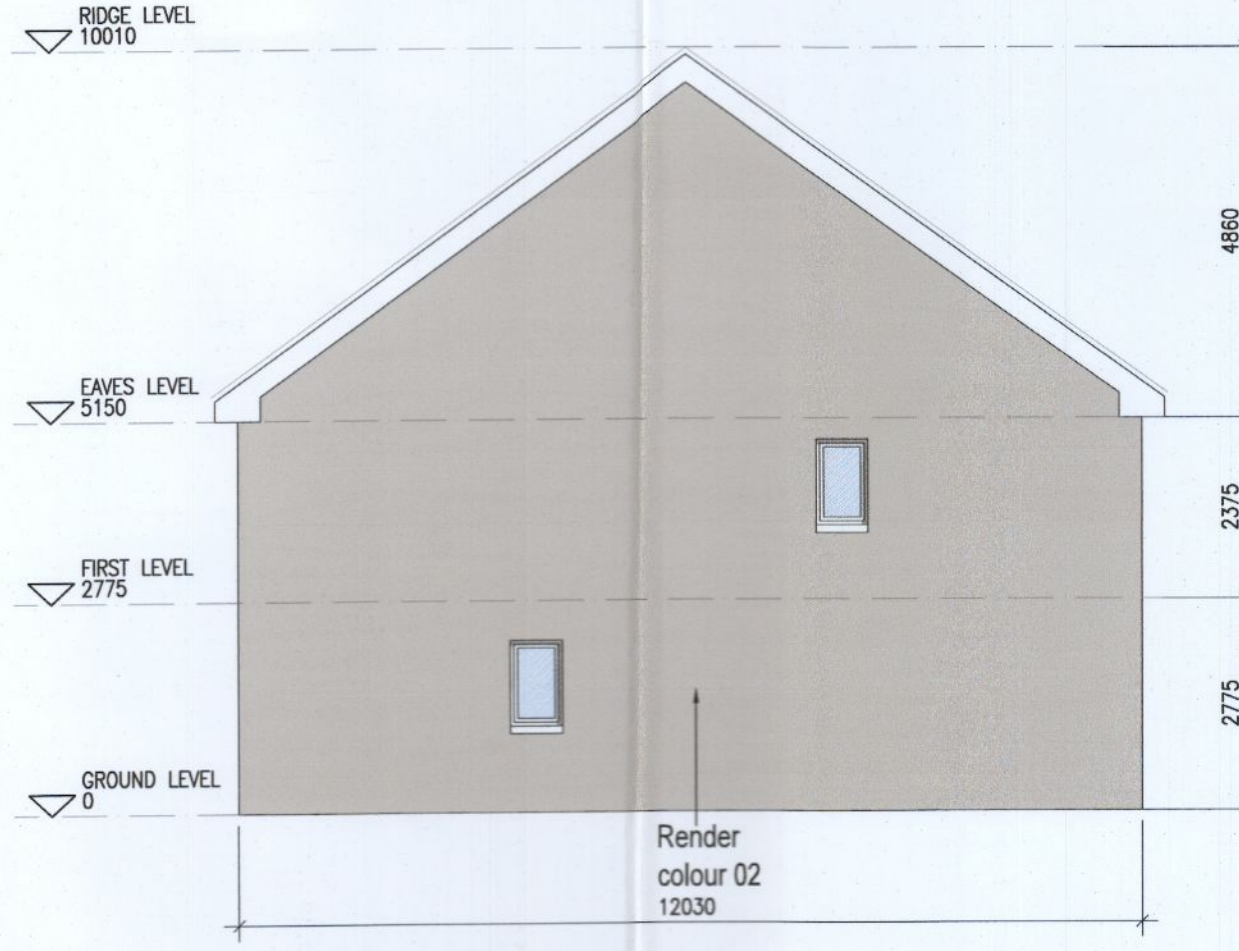
05 Front Elevation [K1 & K2]



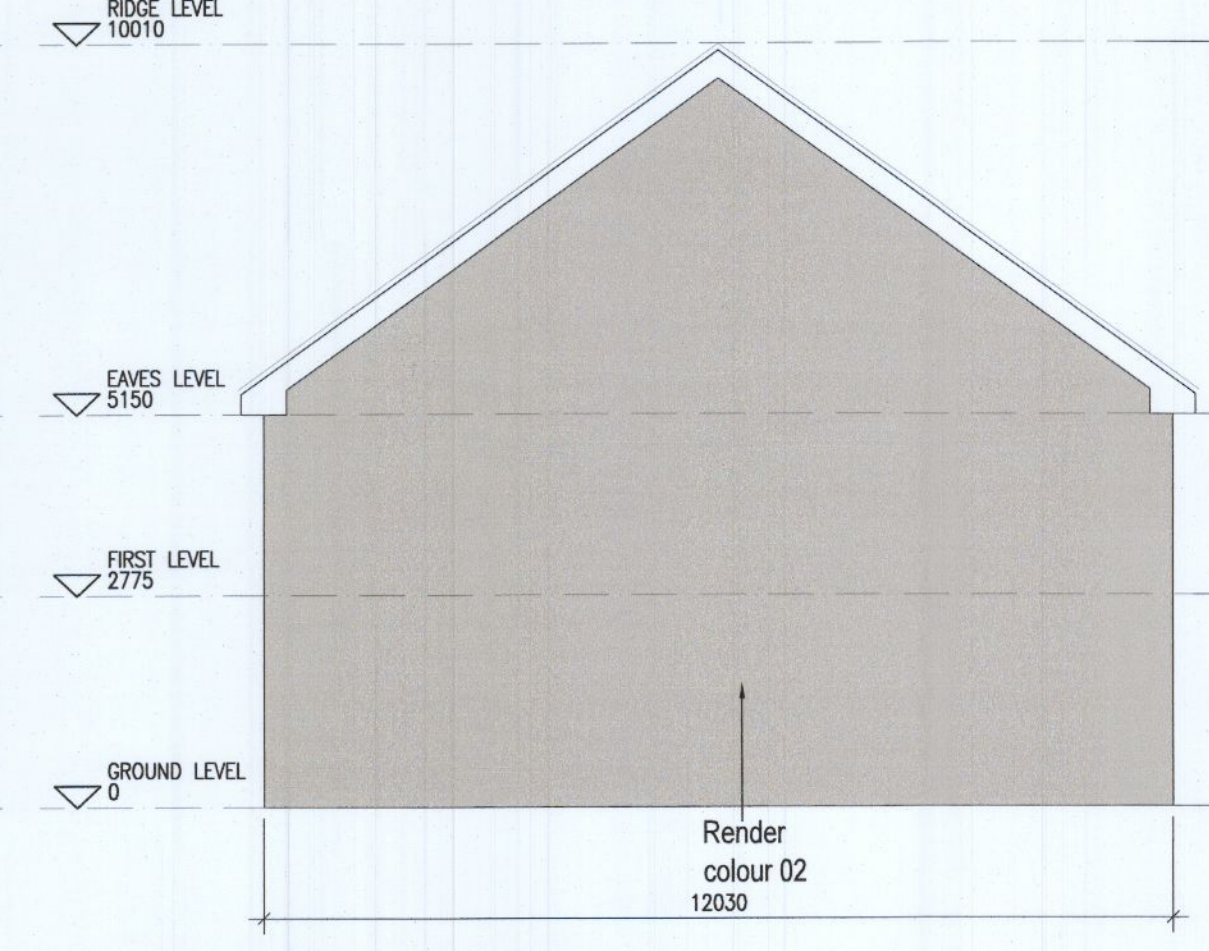
06 Rear Elevation [K1 & K2]



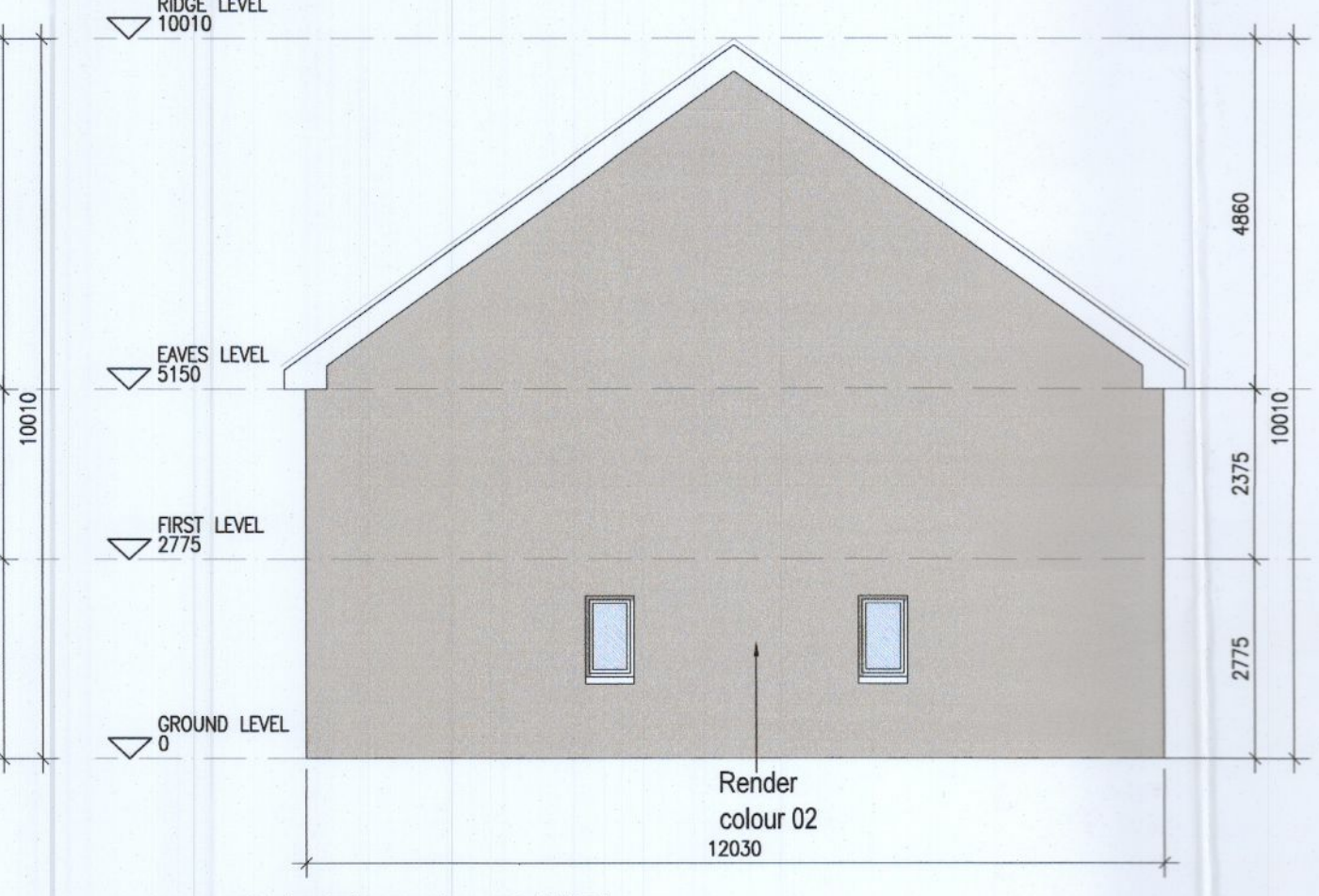
07 Section A-A [K1 & K2]



08 Side Elevation 1 [K1 & K2]



09 Side Elevation 2 [K1]



10 Side Elevation 2 [K2]

REFER TO LANDSCAPE ARCHITECT'S DRAWINGS FOR ALL LANDSCAPING DETAILS INCLUDING BOUNDARY TREATMENTS



KEY PLAN [NTS]

HOUSE TYPES	No. OF UNITS
Type A1/A2 - 3 bed	16
Type B1/B2 - 3 bed	28
Type C1/C2/C3 - 3 bed	15
Type D - 4 bed	3
Type E1/E2 - 4 bed	7
Type K1/K2 - 4 bed	6
TOTAL	75

DUPLEX	No. OF UNITS
Type F1 - 2 bed	3
Type F2 - 3 bed	3
Type F3 - 2 bed	1
Type F3 - 3 bed	1
Type G1 - 2 bed	6
Type G2/G3 - 2 bed	33
Type G2/G3 - 3 bed	33
Type H1/H2 - 2 bed	9
Type H1/H2 - 3 bed	9
Type J1 - 2 bed	2
Type J1 - 3 bed	2
Type J2 - 2 bed	9
Type J2 - 3 bed	9
TOTAL NO. OF UNITS	132
Overall Total	207

EXTERNAL FINISHES

WALLS: PAINTED SAND / CEMENT RENDER OR PROPRIETARY PRECOLOURED RENDER FINISH SELECTED BRICKWORK WHERE INDICATED ON DRAWINGS

WINDOWS: SELECTED PROPRIETARY DOUBLE / TRIPLE GLAZED WINDOW SYSTEM WITH FRAMES TO APPROVED COLOUR. OBSCURED GLAZING TO BATHROOMS AND EN-SUITES.

DOORS: SELECTED PROPRIETARY DOORS AND GLAZED SIDE SCREENS TO APPROVED COLOUR.

RAINWATER GOODS: uPVC OR POWDER COATED METAL GUTTERS AND RAINWATER PIPES TO SELECTED COLOUR.

MAIN ROOF: CONCRETE ROOF TILES IN SELECTED COLOUR.

LOW LEVEL PROJECTION: ZINC CANOPY TO ENTRANCE OF UNITS

OTHER ITEMS: uPVC OR POWDER COATED METAL FASCIAS, SOFFITS AND BARGE BOARDS PAINTED MILDSTEEL RAILINGS AND BALUSTRADES

HOUSE TYPE K1 & K2
 Ground floor area 58.6m²
 First floor area 60.2m²
 Total Floor Area (3-bed unit): 118.8m²

HOUSE TYPE K1 & K2

Notes

- Copyright Reserved
- Work to signed dimensions only. Do not scale drawing
- The contractor is responsible for checking all levels and dimensions on site and shall refer all discrepancies to the Architect
- Where appropriate, for details of r.c. structure, or mechanical and electrical details, see Engineers drawings
- Proprietary items shall be fixed in strict accordance with manufacturers instructions.
- Sizes of proprietary items shall be checked with manufacturer
- The contractor shall be responsible for the coordination of structure, finishes and services.

Issue Status	No.	Date	Revision	Initials
Progress	01	14.10.2022	ISSUED FOR PLANNING	AM

No.	Date	Revision	Initials
01	14.10.2022	ISSUED FOR PLANNING	AM

Project	Aderrig Phase 3 Adamstown SDZ Residential Development
Drawing Title	House Type K1, K2 (detached) -Plans, Elevation, Section
Drawing No	6259A-P-116
Scale	1:100@A1
Rev	01
Drawn	IFJ
Date	OCT 2022

6-7 HAROURT TERRACE, DUBLIN 2, IRELAND
 t +353 1 618 2400 f +353 1 679 7385
 a architecture@bkd.ie
 www.bkd.ie

bkdarchitects
 BURKE-KENNEDY DOYLE