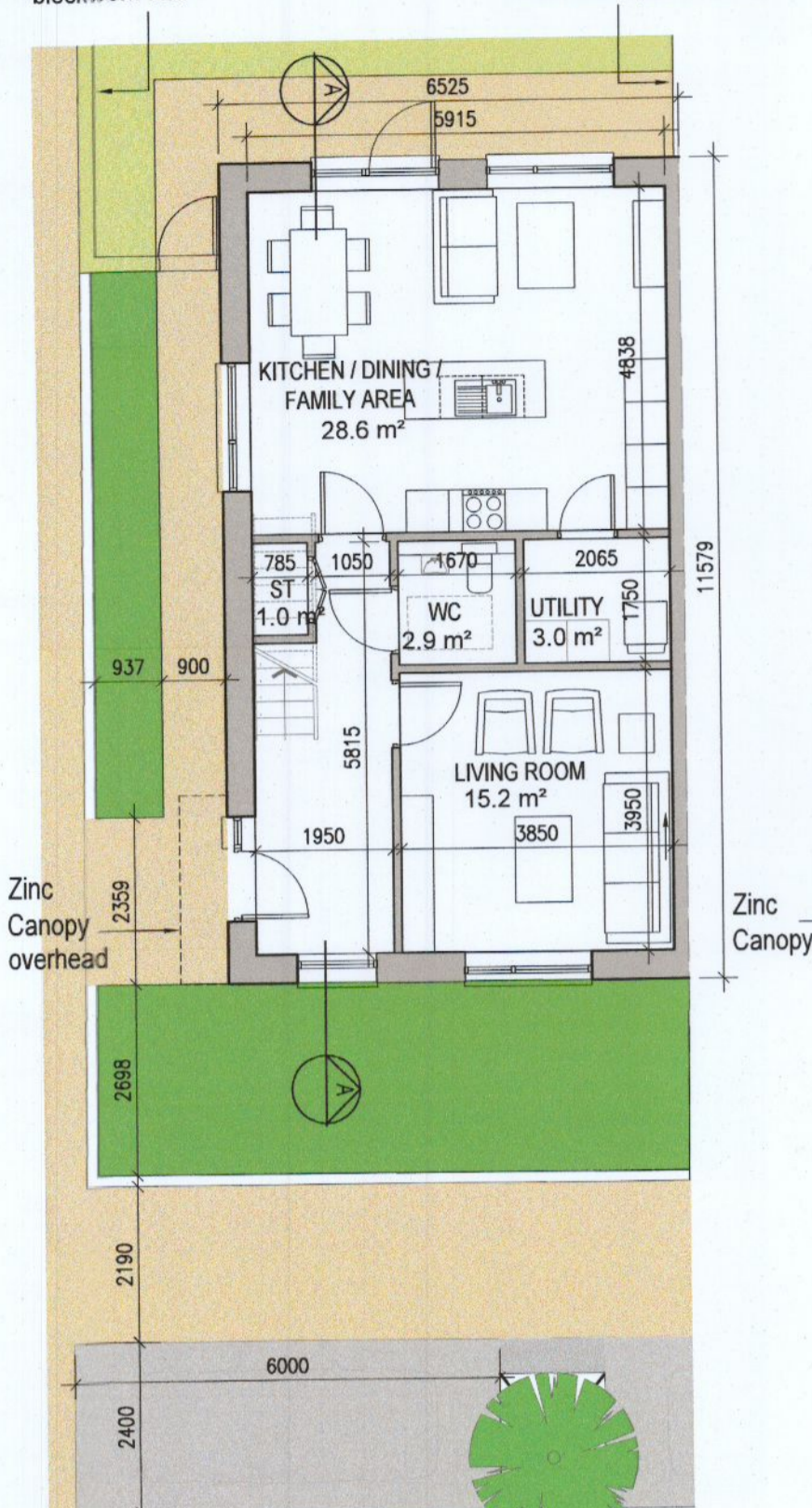


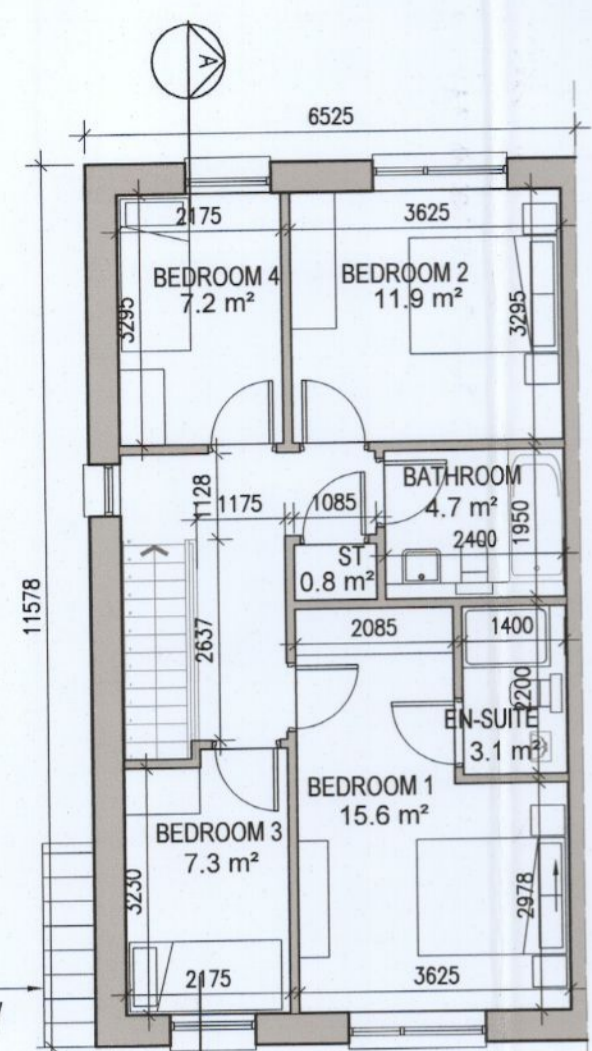
HOUSE TYPE E2

2000mm high rendered blockwork wall
1800mm high concrete post and timber panel fence

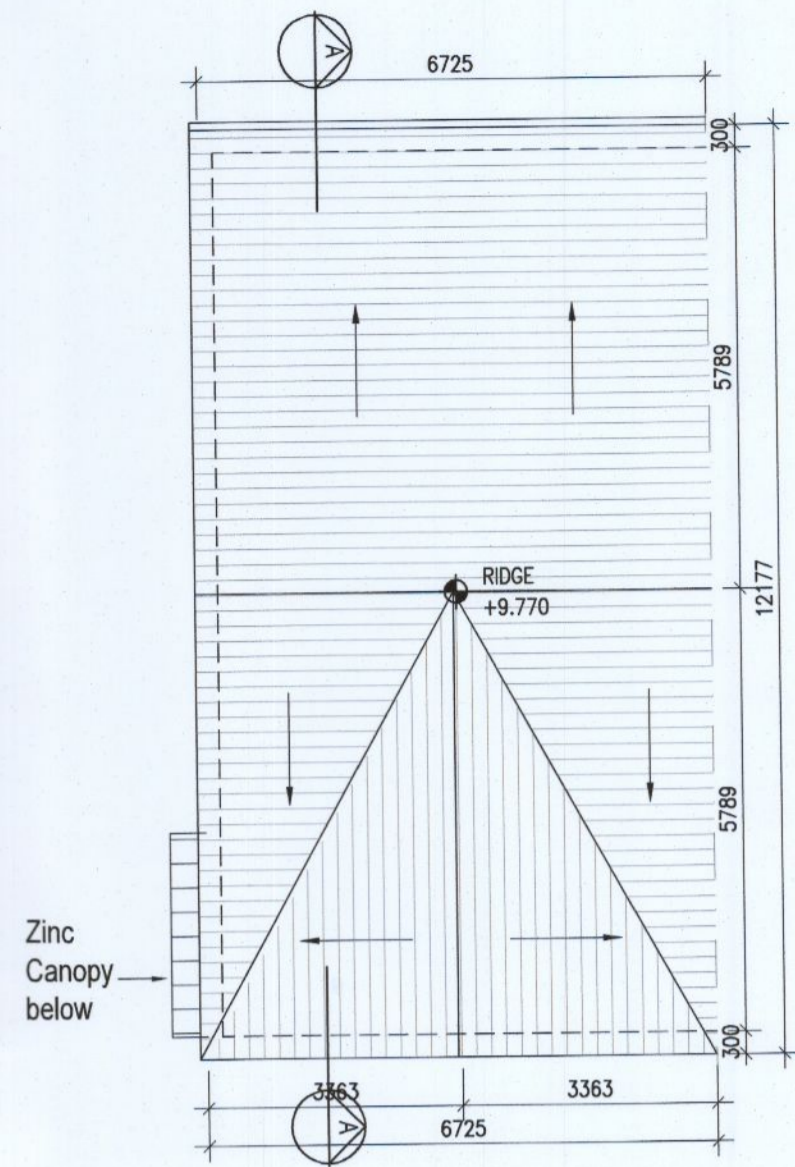


Parking layout varies. Refer to 6259A-P-003 & 6259A-P-010/011 for information

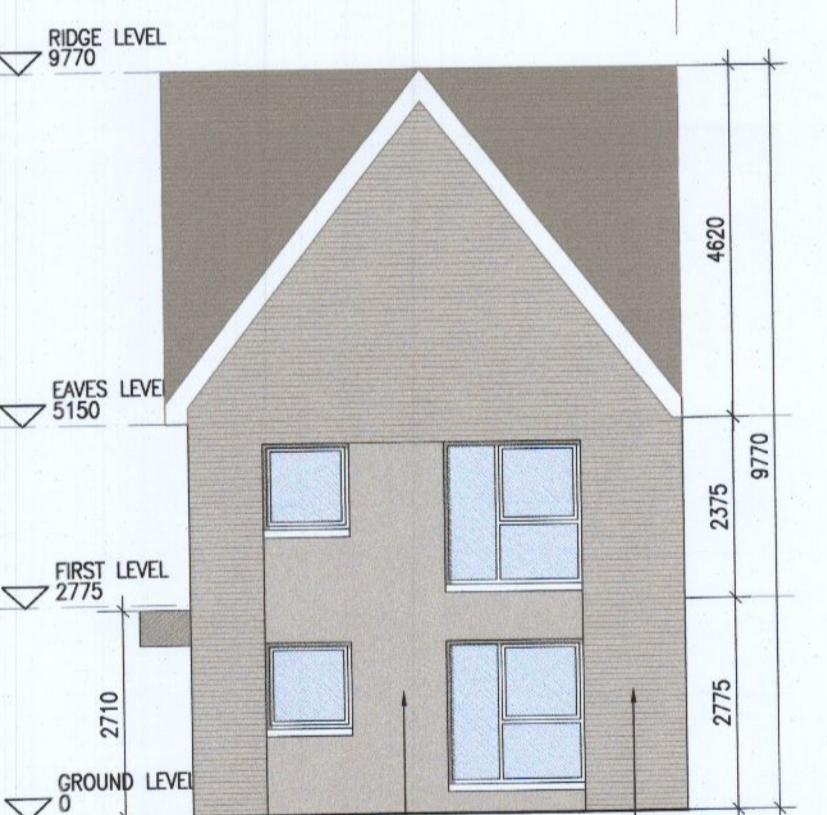
01 Ground Floor Plan



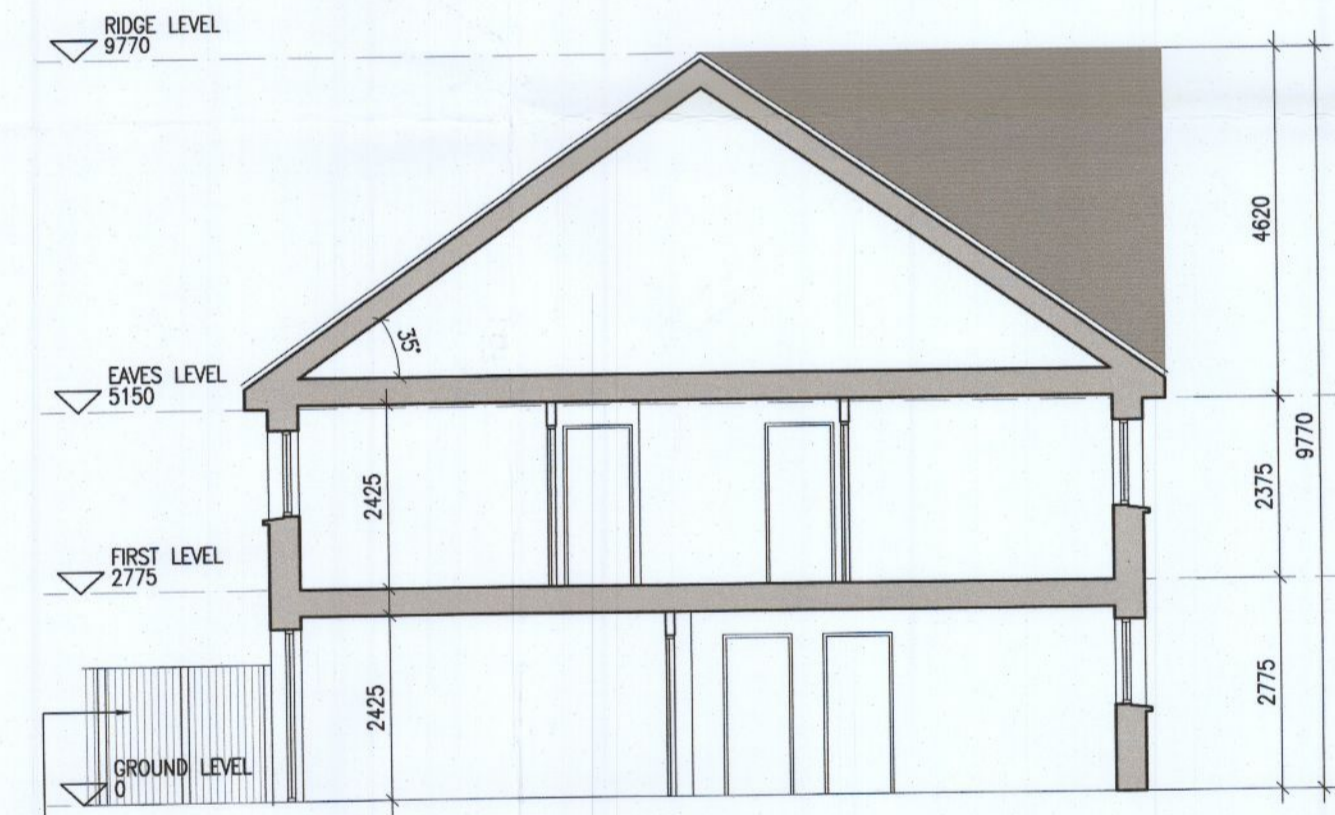
02 First Floor Plan



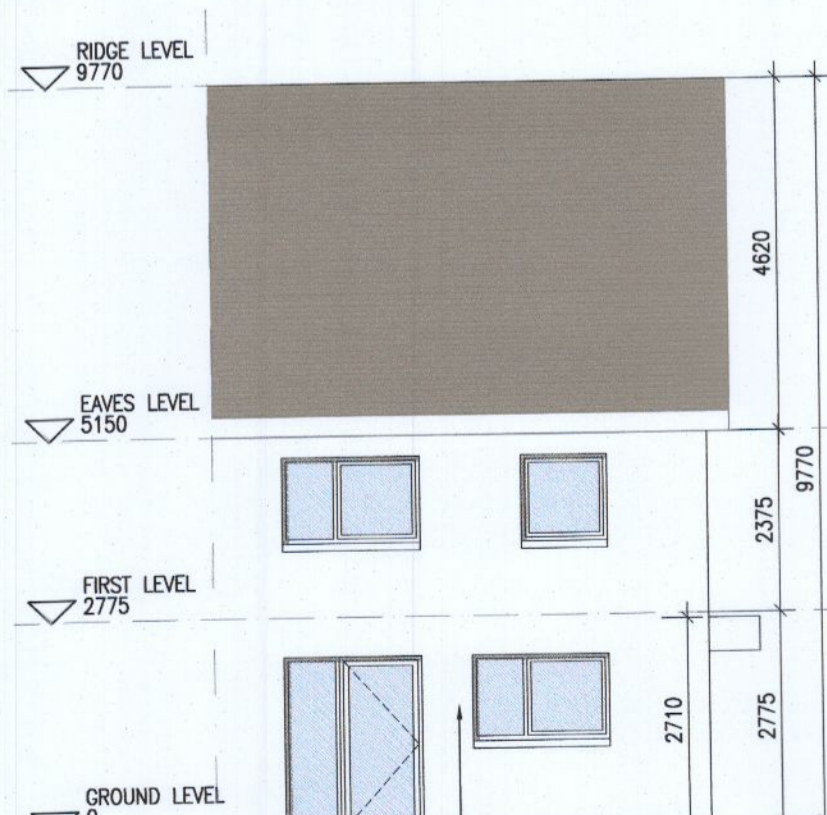
03 Roof Floor Plan



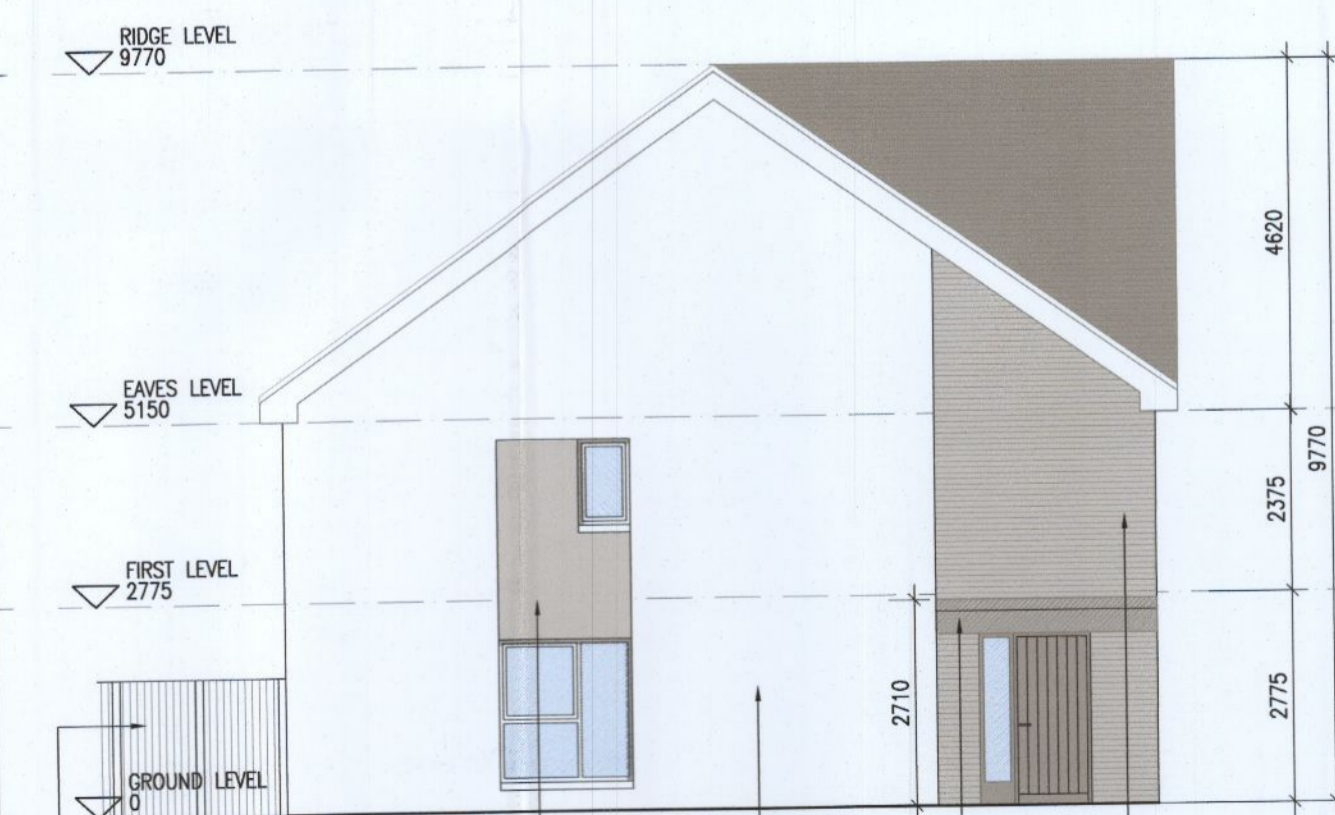
04 Front Elevation



05 Section A-A



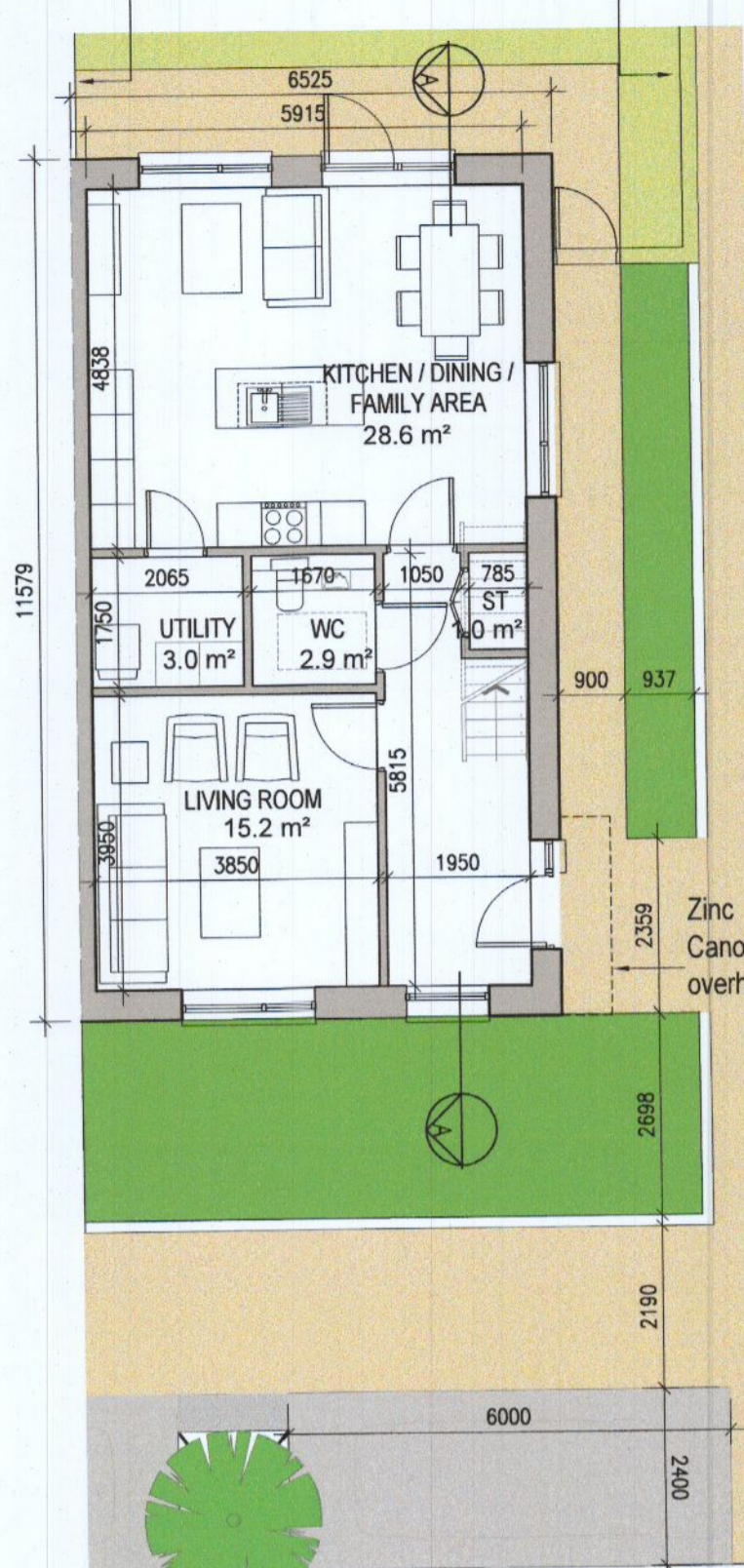
06 Rear Elevation



07 Side Elevation

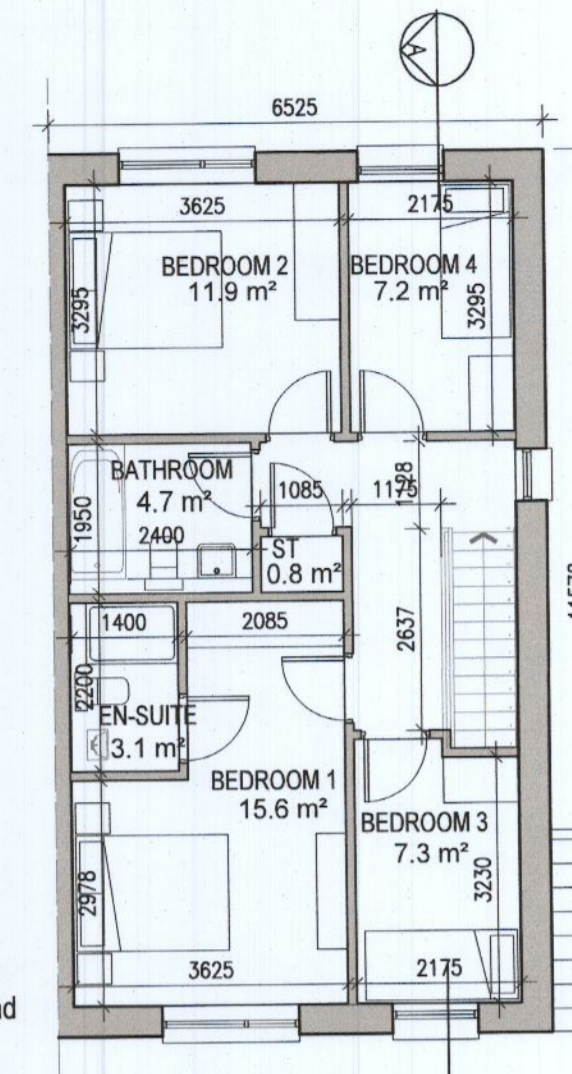
HOUSE TYPE E2 [HANDED]

1800mm high concrete post and timber panel fence
2000mm high rendered blockwork wall

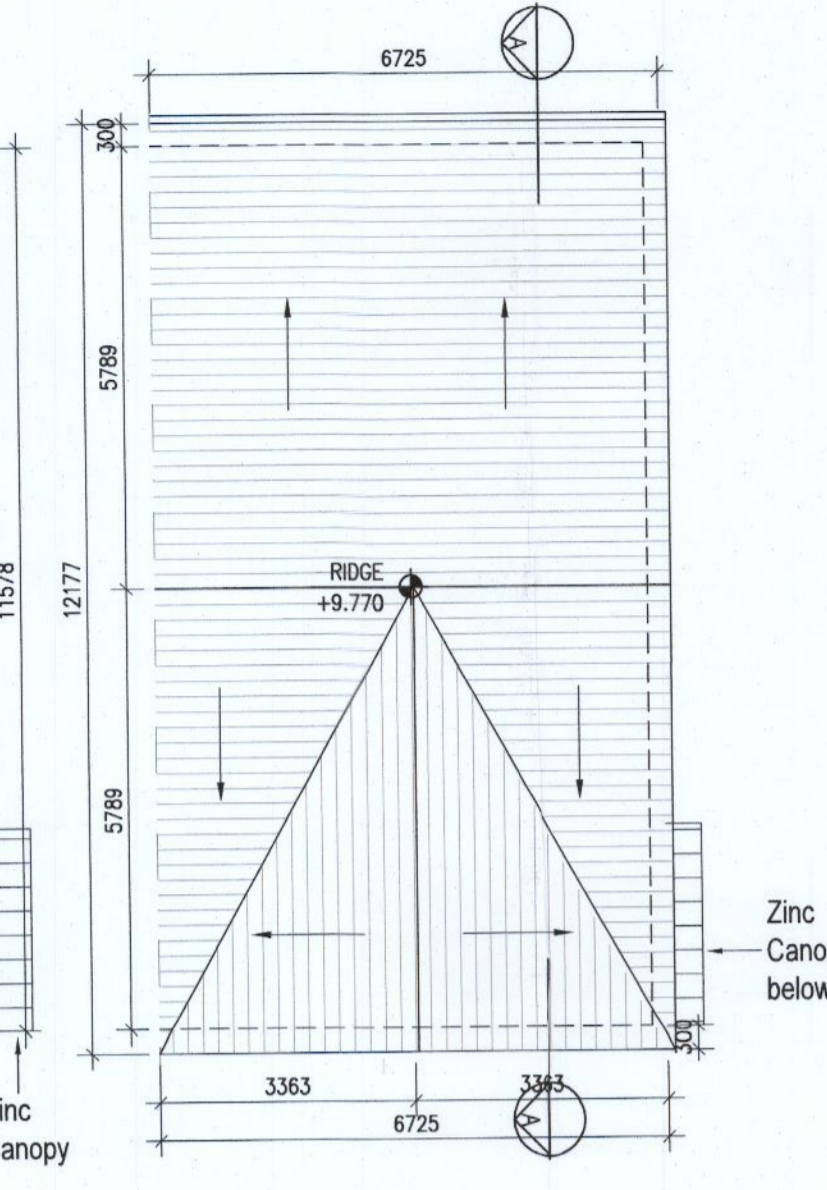


Parking layout varies. Refer to 6259A-P-003 & 6259A-P-010/011 for information

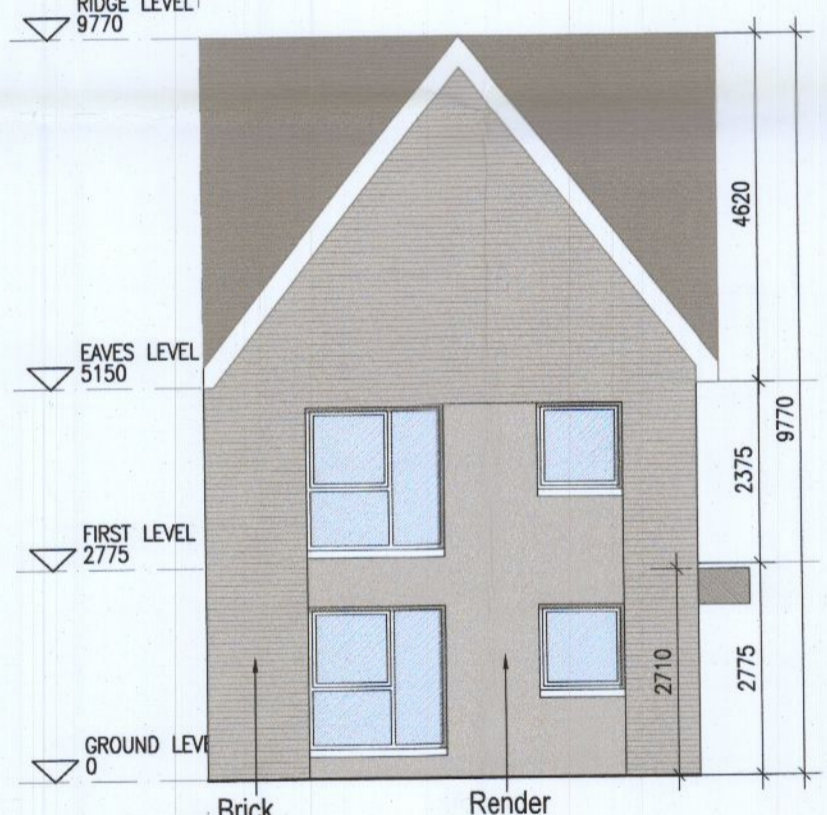
08 Ground Floor Plan



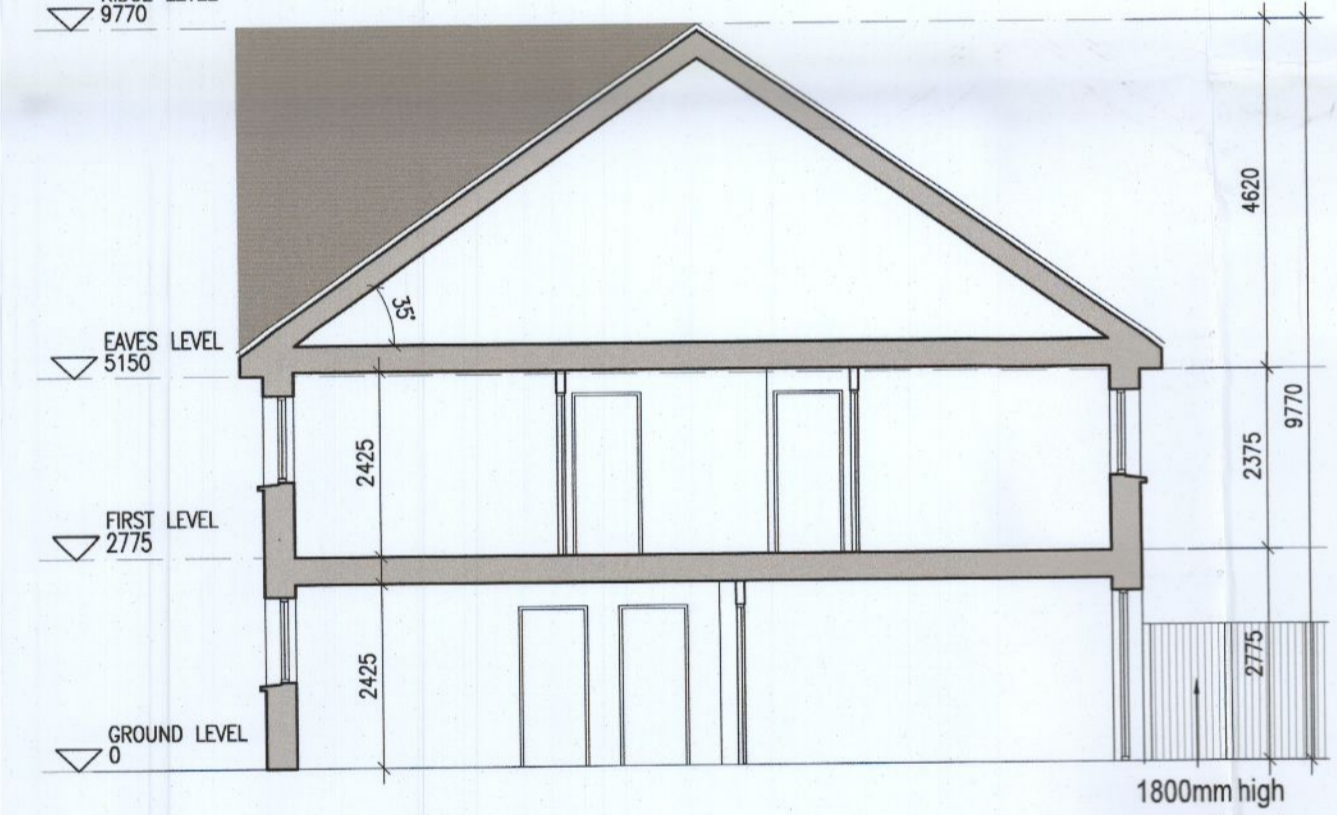
09 First Floor Plan



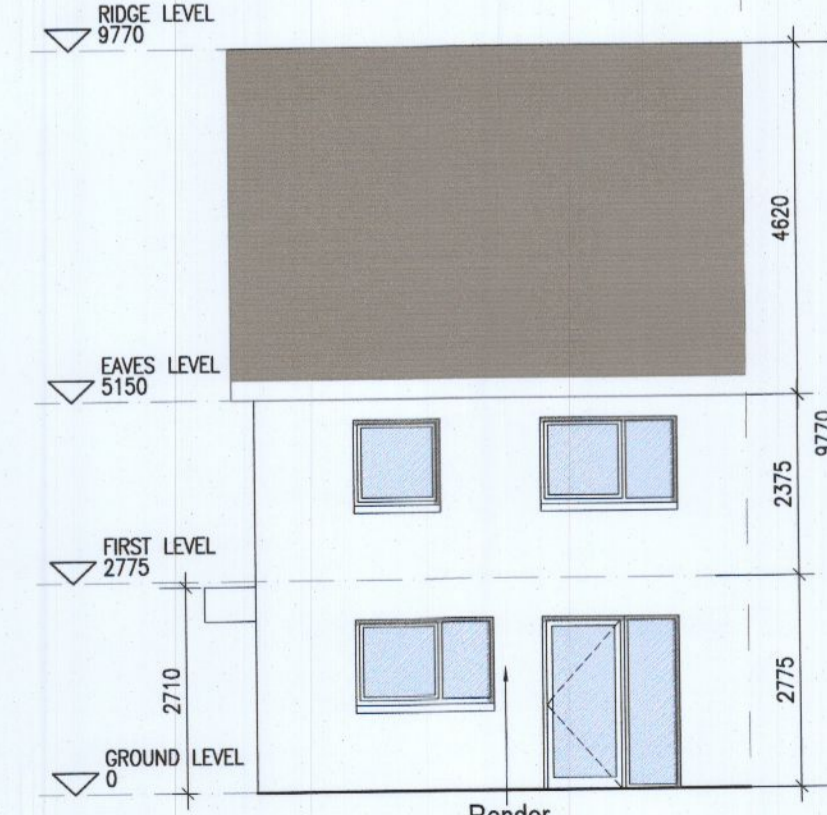
10 Roof Floor Plan



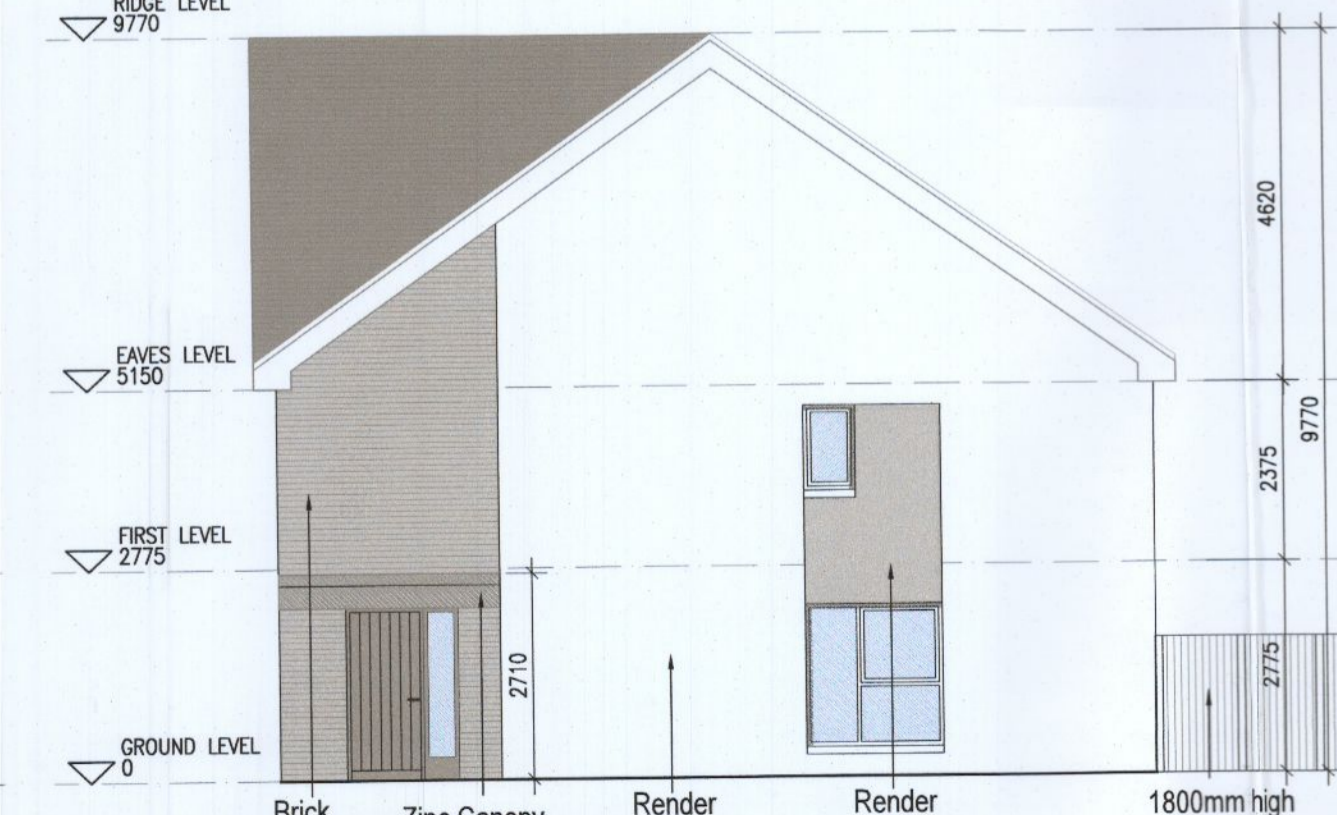
11 Front Elevation



12 Section A-A



13 Rear Elevation



14 Side Elevation



KEY PLAN [NTS]

HOUSE TYPES	No. OF UNITS
Type A1/A2 - 3 bed	16
Type B1/B2 - 3 bed	28
Type C1/C2/C3 - 3 bed	15
Type D - 4 bed	3
Type E1/E2 - 4 bed	7
Type K1/K2 - 4 bed	6
	75

DUPLEX	No. OF UNITS
Type F1 - 2 bed	3
Type F2 - 2 bed	3
Type F3 - 2 bed	1
Type G1 - 2 bed	6
Type G2 - 2 bed	6
Type G3 - 2 bed	2
Type H1/H2 - 3 bed	7
Type J1 - 2 bed	2
Type J2 - 3 bed	2
Type J2 - 3 bed	9
Type J2 - 3 bed	3
	132
TOTAL NO. OF UNITS	207

EXTERNAL FINISHES

WALLS: PAINTED SAND / CEMENT RENDER OR PROPRIETARY PRECOLOURED RENDER FINISH SELECTED BRICKWORK WHERE INDICATED ON DRAWINGS

WINDOWS: SELECTED PROPRIETARY DOUBLE / TRIPLE GLAZED WINDOW SYSTEM WITH FRAMES TO APPROVED COLOUR OBSCURED GLAZING TO BATHROOMS AND EN-SUITES.

DOORS: SELECTED PROPRIETARY DOORS AND GLAZED SIDE SCREENS TO APPROVED COLOUR.

RAINWATER GOODS: uPVC OR POWDER COATED METAL GUTTERS AND RAINWATER PIPES TO SELECTED COLOUR.

MAIN ROOF: CONCRETE ROOF TILES IN SELECTED COLOUR.

LOW LEVEL PROJECTION: ZINC CANOPY TO ENTRANCE OF UNITS

OTHER ITEMS: uPVC OR POWDER COATED METAL FASCIAS, SOFFITS AND BARGE BOARDS PAINTED MILDSTEEL RAILINGS AND BALUSTRADES

HOUSE TYPE E2
Ground floor area 63.7m²
First floor area ####m²
Total Floor Area (3-bed unit): ####m²

REFER TO LANDSCAPE ARCHITECT'S DRAWINGS FOR ALL LANDSCAPING DETAILS INCLUDING BOUNDARY TREATMENTS

HOUSE TYPE E2

Notes

- Copyright Reserved
- Work to figured dimensions only. Do not scale drawing.
- The contractor is responsible for checking all levels and dimensions on site and shall refer all discrepancies to the Architect
- Where appropriate, for details of r.c. structure or mechanical and electrical details, see Engineers drawings
- Proprietary items shall be fixed in strict accordance with manufacturers instructions.
- Size of proprietary items shall be checked with manufacturer.
- The contractor shall be responsible for the coordination of structure, finishes and services.

Issue Status	Progress
Planning Application	■
Fire Cert	
Disability Cert	
Tender	
Construction	
As Built	
Information Only	

No.	Date	Revision	Initials
01	14.10.2022	ISSUED FOR PLANNING	BKD

Project	Aderrig Phase 3 Adamstown SDZ Residential Development
Drawing Title	House Type E2 (end terrace)Handed/Non-handed-Plans,Elevation,Section
Drawing No	6259A-P-115
Scale	1:100@A1
Rev	01
Drawn	IFJ
Date	OCT 2022

6-7 HARROUHI TERRACE, DUBLIN 9, IRELAND
t +353-1-936 2400 f +353-1-976 7386
e architecture@bkd.ie
www.bkd.ie

bkd architects
BURKE-KENNEDY DOYLE