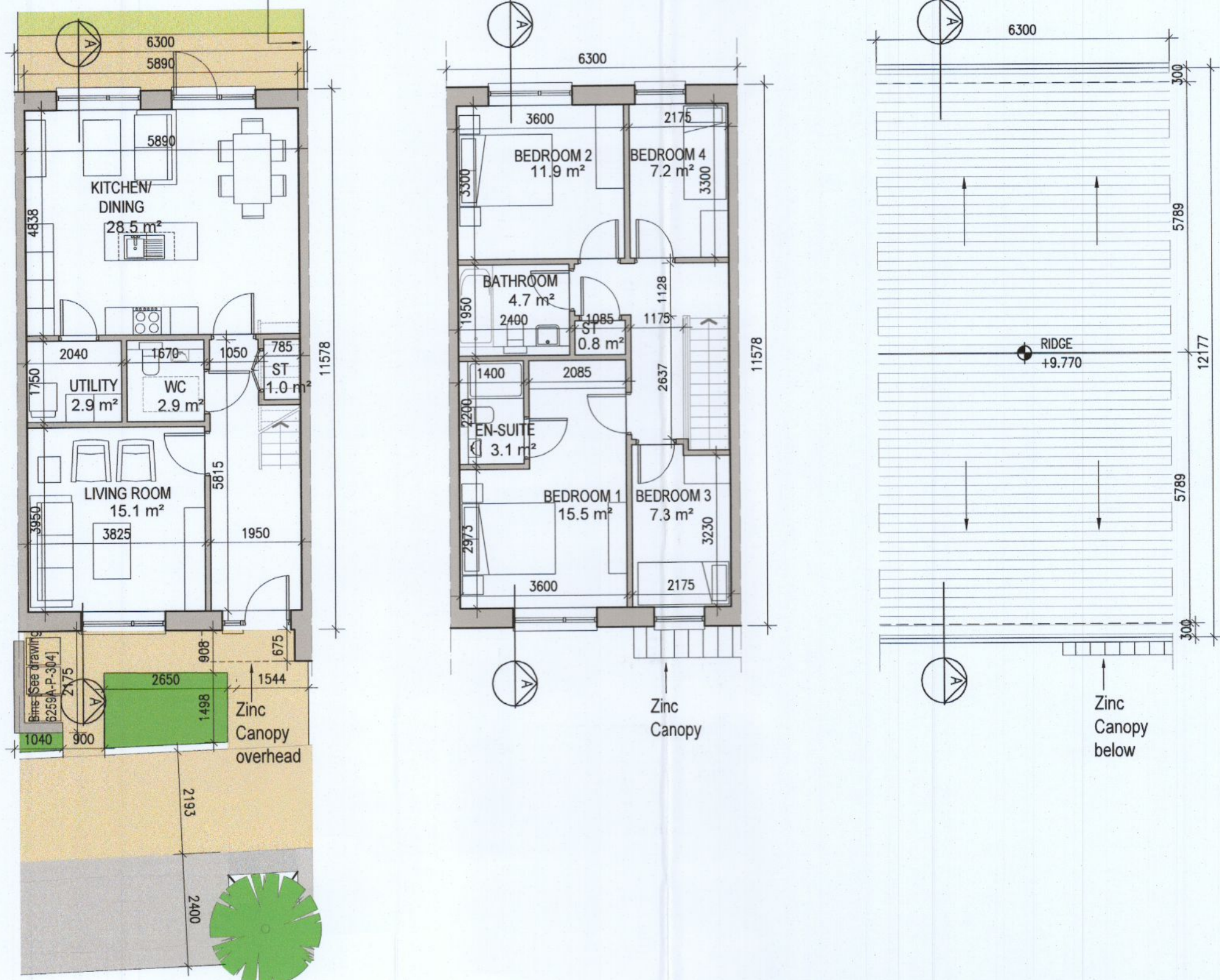


HOUSE TYPE E1

1800mm high concrete post and timber panel fence



01 Ground Floor Plan

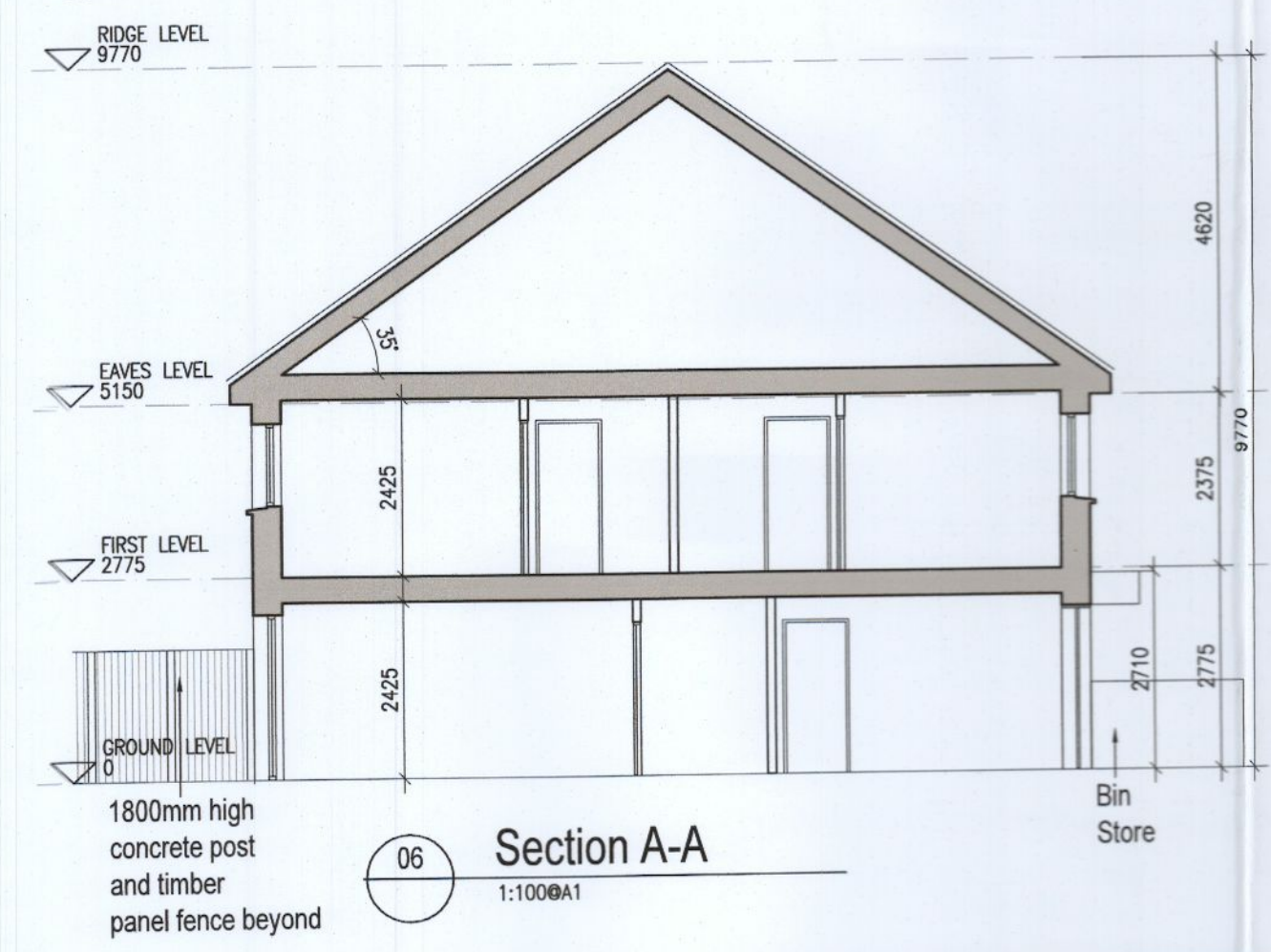
02 First Floor Plan

03 Roof Floor Plan
1:100@A1



04 Front Elevation
1:100@A1

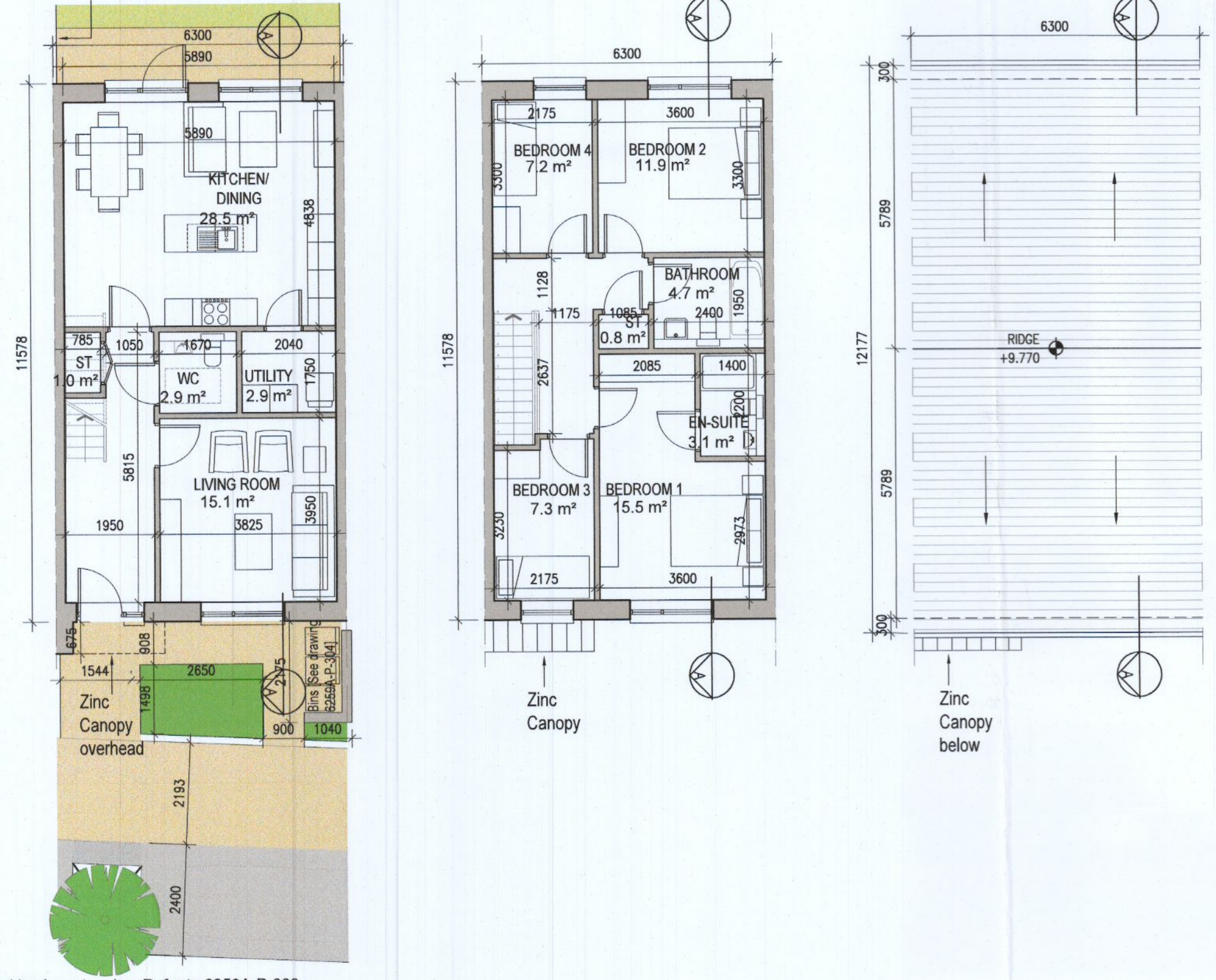
05 Rear Elevation
1:100@A1



06 Section A-A
1:100@A1

HOUSE TYPE E1 [HANCED]

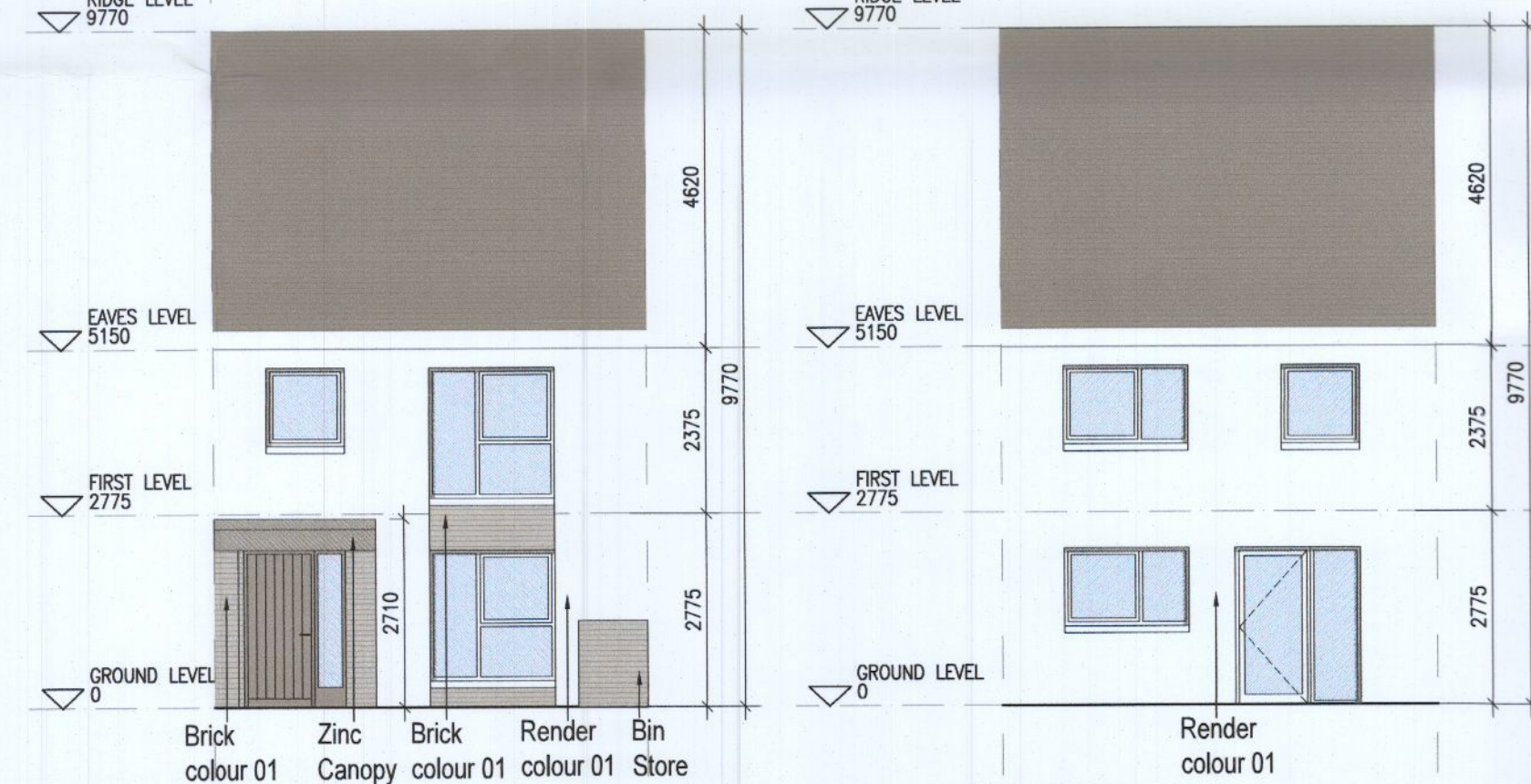
1800mm high concrete post and timber panel fence



07 Ground Floor Plan
1:100@A1

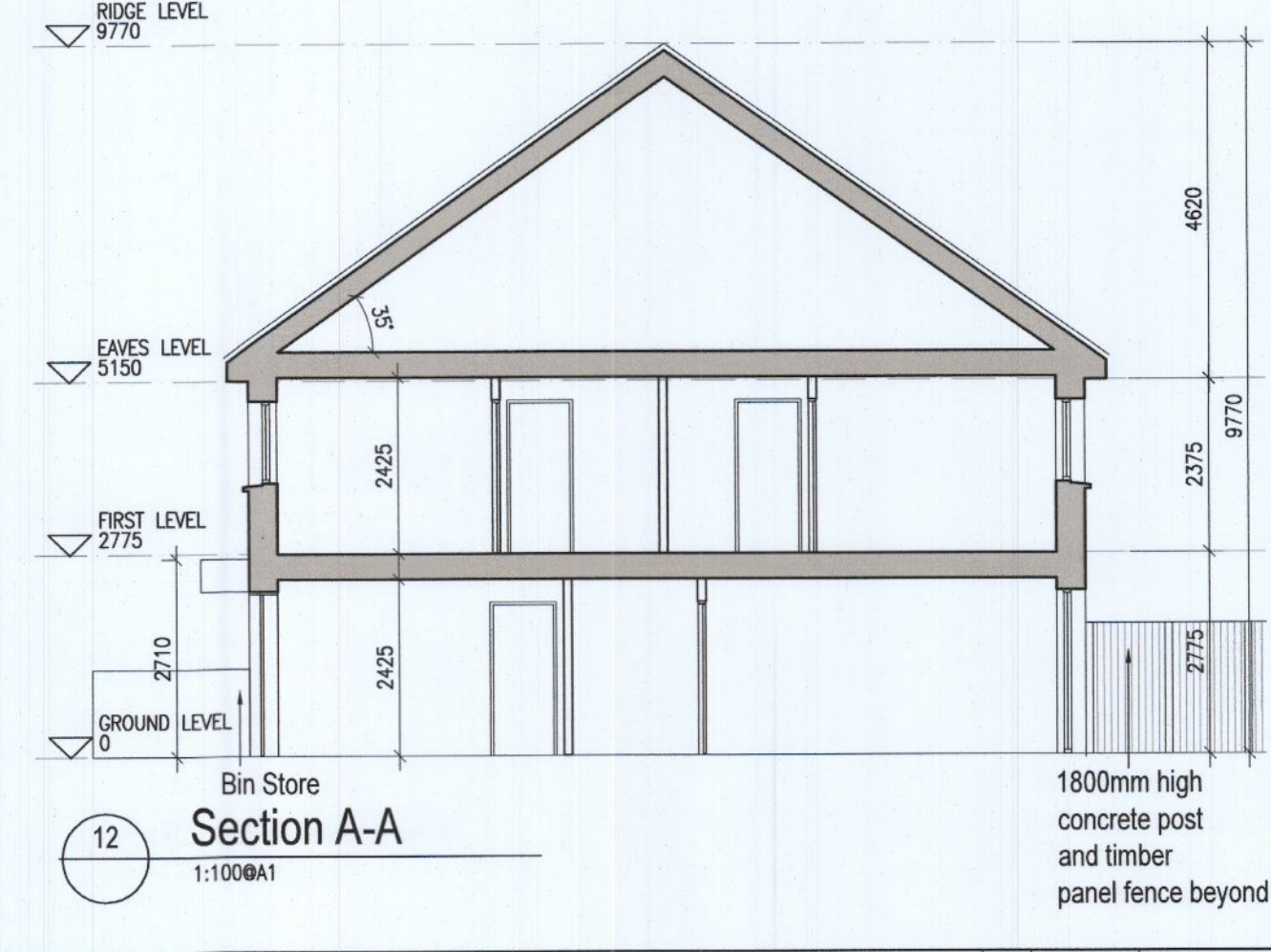
08 First Floor Plan
1:100@A1

09 Roof Floor Plan
1:100@A1



10 Front Elevation
1:100@A1

11 Rear Elevation
1:100@A1



12 Section A-A
1:100@A1



KEY PLAN [NTS]

HOUSE TYPES	No. OF UNITS
Type A1/A2 - 3 bed	16
Type B1/B2 - 3 bed	28
Type C1/C2/C3 - 3 bed	15
Type D - 4 bed	3
Type E1/E2 - 4 bed	7
Type K1/K2 - 4 bed	6
	75

DUPLEX	No. OF UNITS
Type F1 - 2 bed	3
Type F2 - 2 bed	3
Type F3 - 2 bed	1
Type G1 - 2 bed	6
Type G2 - 2 bed	6
Type G3 - 2 bed	2
Type H1/H2 - 3 bed	2
Type J1 - 2 bed	7
Type J2 - 2 bed	9
	3
	132
TOTAL NO. OF UNITS	207

- EXTERNAL FINISHES**
- WALLS:** PAINTED SAND / CEMENT RENDER OR PROPRIETARY PRECOLOURED RENDER FINISH SELECTED BRICKWORK WHERE INDICATED ON DRAWINGS
 - WINDOWS:** SELECTED PROPRIETARY DOUBLE / TRIPLE GLAZED WINDOW SYSTEM WITH FRAMES TO APPROVED COLOUR. OBSCURED GLAZING TO BATHROOMS AND EN-SUITES.
 - DOORS:** SELECTED PROPRIETARY DOORS AND GLAZED SIDE SCREENS TO APPROVED COLOUR.
 - RAINWATER GOODS:** uPVC OR POWDER COATED METAL GUTTERS AND RAINWATER PIPES TO SELECTED COLOUR.
 - MAIN ROOF:** CONCRETE ROOF TILES IN SELECTED COLOUR.
 - LOW LEVEL PROJECTION:** ZINC CANOPY TO ENTRANCE OF UNITS
 - OTHER ITEMS:** uPVC OR POWDER COATED METAL FASCIAS, SOFFITS AND BARGE BOARDS PAINTED MILDSTEEL RAILINGS AND BALUSTRADES

HOUSE TYPE E1	
Ground floor area	63.4m ²
First floor area	63.4m ²
Total Floor Area (3-bed unit):	126.8m²

REFER TO LANDSCAPE ARCHITECT'S DRAWINGS FOR ALL LANDSCAPING DETAILS INCLUDING BOUNDARY TREATMENTS

HOUSE TYPE E1

- Notes**
- Copyright Reserved
 - Work to figured dimensions only. Do not scale drawing
 - The contractor is responsible for checking all levels and dimensions on site and shall refer all discrepancies to the Architect
 - Where appropriate, for details of r.c. structure, or mechanical and electrical details, see Engineers drawings
 - Proprietary items shall be fixed in strict accordance with manufacturers instructions.
 - Sizes of proprietary items shall be checked with manufacturer.
 - The contractor shall be responsible for the coordination of structure, finishes and services.

Issue Status	Progress
Planning Application	■
Fire Cert	
Disability Cert	
Tender	
Construction	
As Built	
Information Only	

No.	Date	Revision	Initials
01	14.10.2022	ISSUED FOR PLANNING	BKD

Project	Aderrig Phase 3 Adamstown SDZ Residential Development
Drawing Title	House Type E1 (mid terrace) [handed]/Non-handed-Plans, Elevation, Section
Drawing No.	6259A-P-114
Scale	1:100@A1
Rev	01
Drawn	IFJ
Date	OCT 2022

6-7 HARPCURT TERRACE, DUBLIN 2, IRELAND
t +353-1-818 2400 f +353-1-676 7886
www.bkd.ie
architecture@bkd.ie

bkd architects
BURKE-KENNEDY DOYLE