

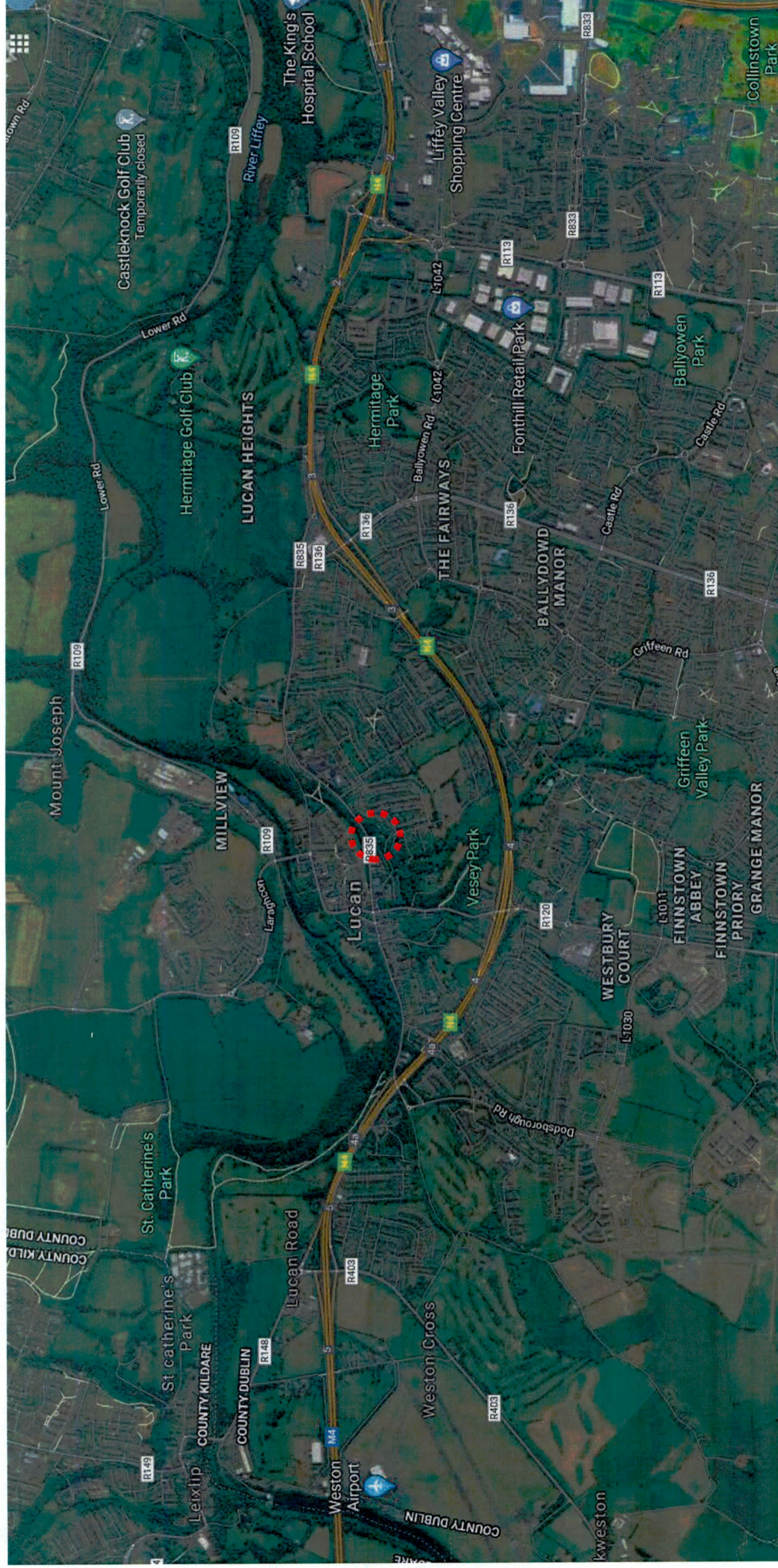
Landscape Rationale

**Proposed Residential Development at
Clonbrone, Lucan, Dublin 20.**

Ronan Mac Diarmada & Associates
Landscape Architects & Consultants



Site Location & Context



Development Location

Clonbrone Lucan

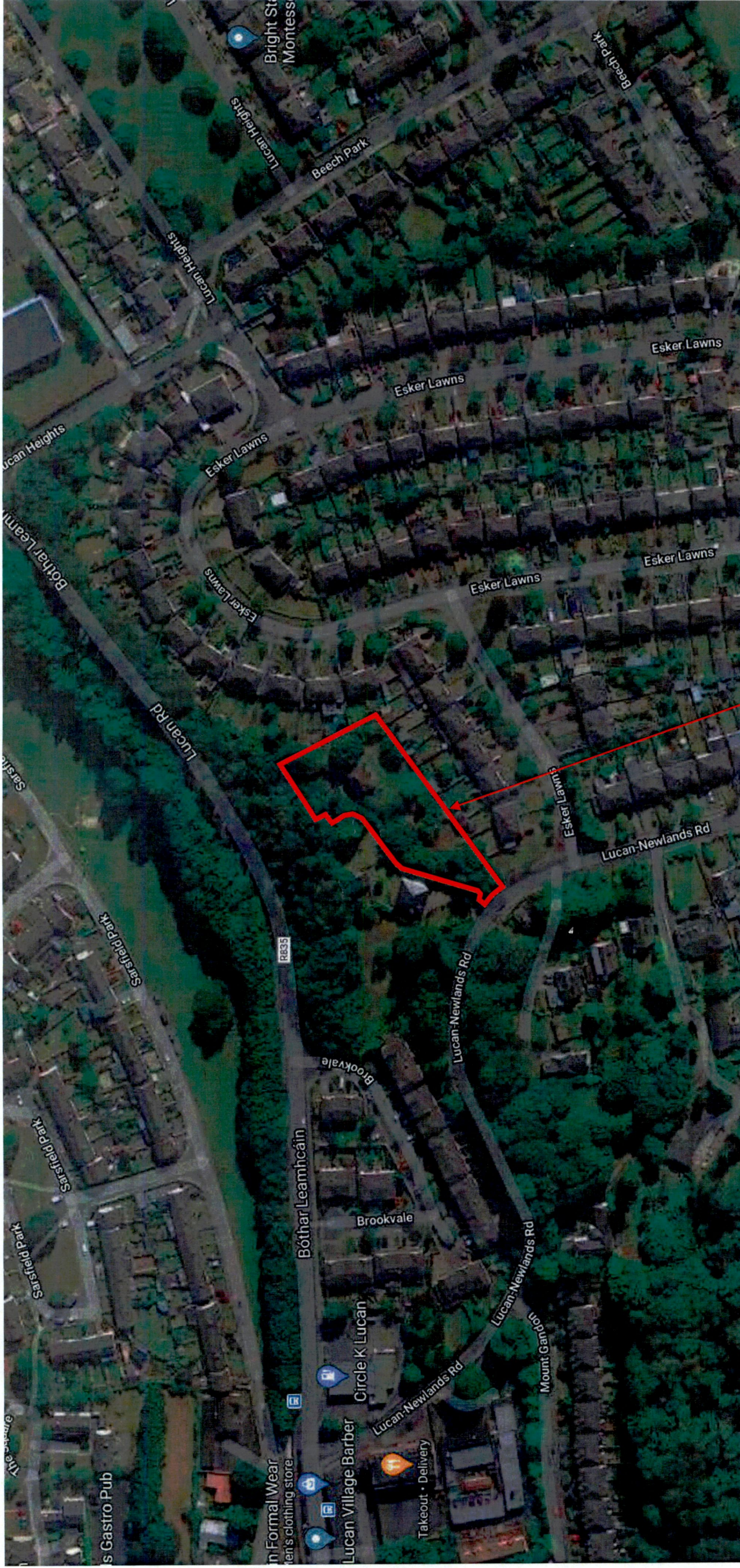
2.

Ronan Mac Diarmada & Associates

Landscape Architects & Consultants



Existing Site

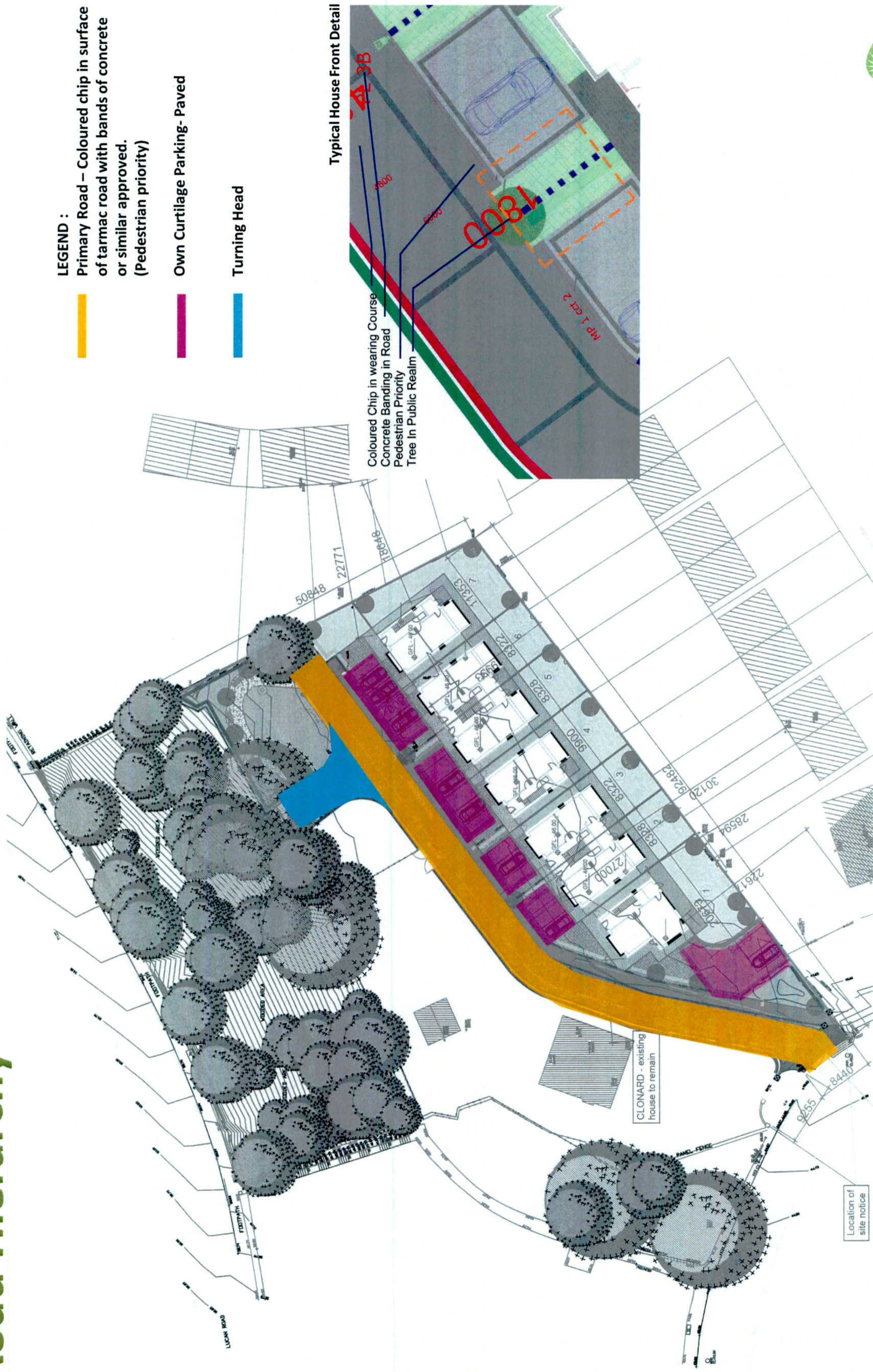


Site – Outlined in Red

Landscape Plan



Road Hierarchy



LEGEND :

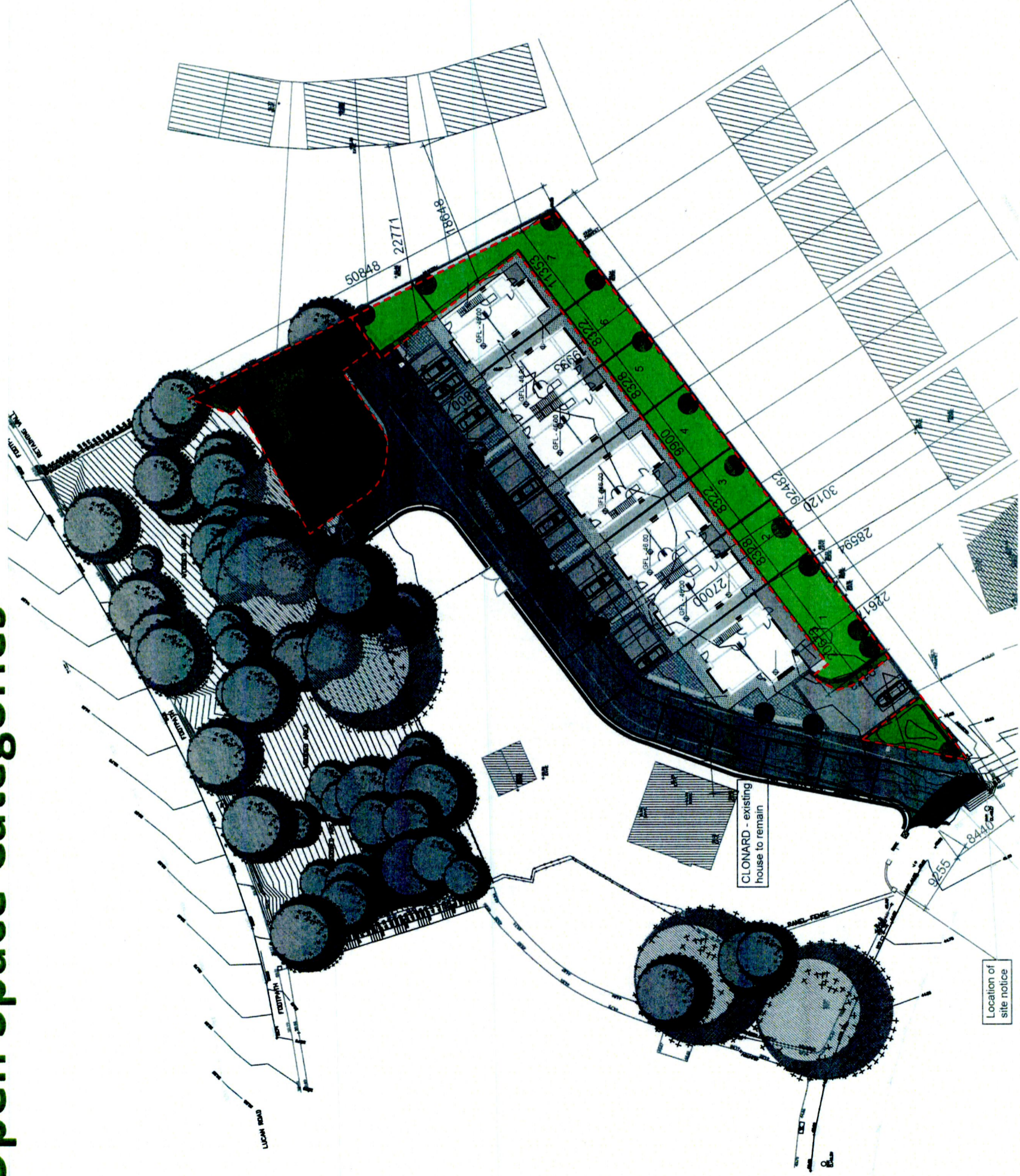
- Primary Road – Coloured chip in surface of tarmac road with bands of concrete or similar approved. (Pedestrian priority)
- Own Curtilage Parking- Paved
- Turning Head

Typical House Front Detail

Coloured Chip in wearing Course
Concrete Banding in Road
Pedestrian Priority
Tree In Public Realm

Open Space Categories

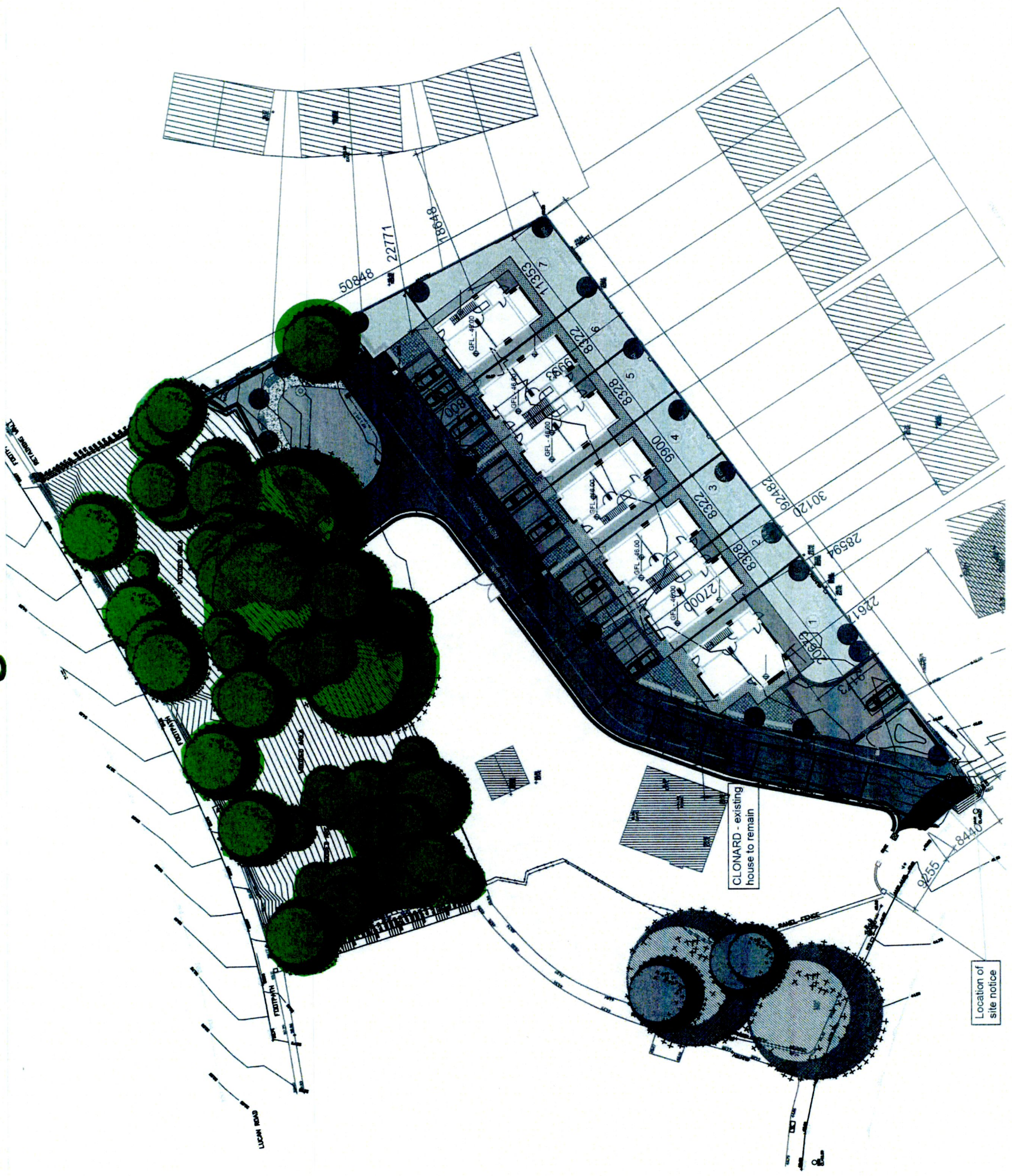
- Public Open Space
- Private Open Space



Retention of Existing Trees – Green Infrastructure



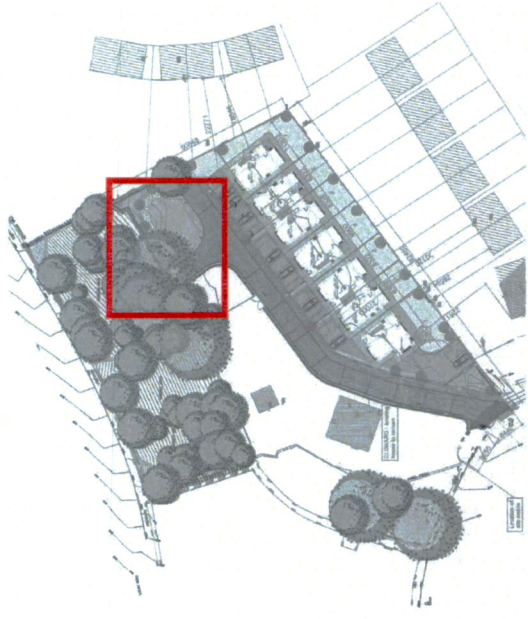
Existing Woodland to be retained
(Please see arborist report for more
Details)



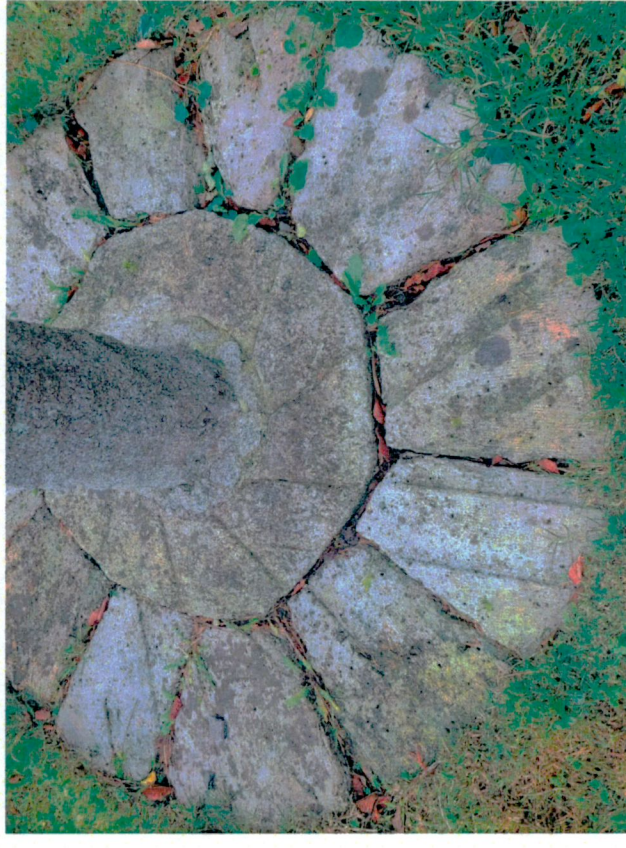
Suggested Sun Dial Location



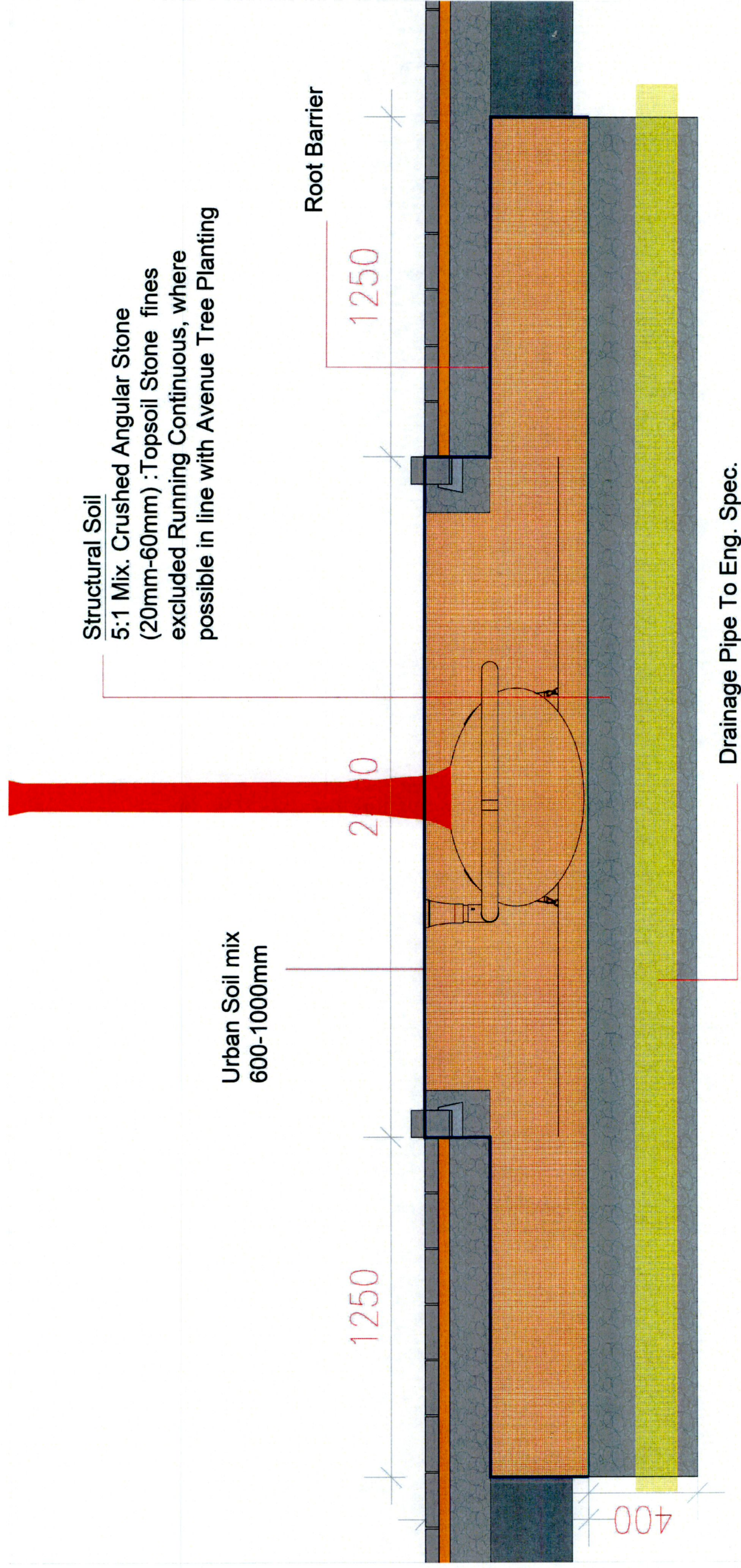
Suggested Sun Dial Location



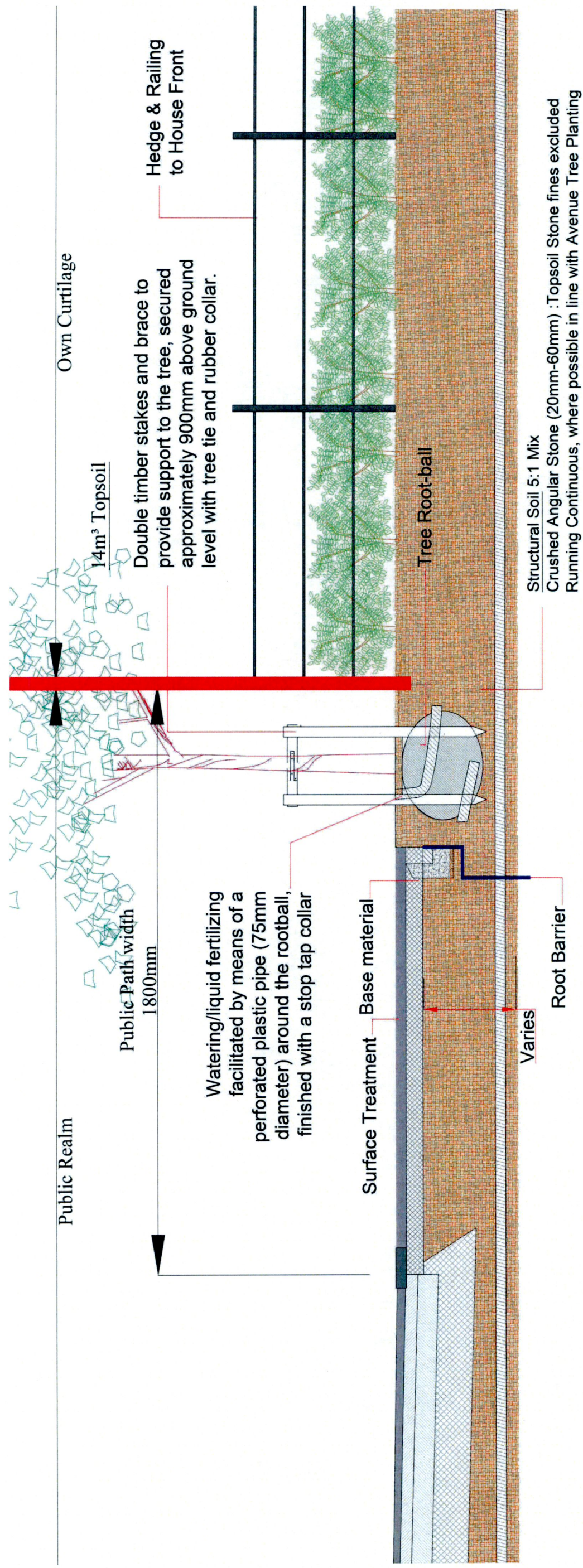
Example of Sun Dial



Landscape Detail – Urban Tree Pit



Landscape Detail – Road, Flush Kerb & Public Tree Planting



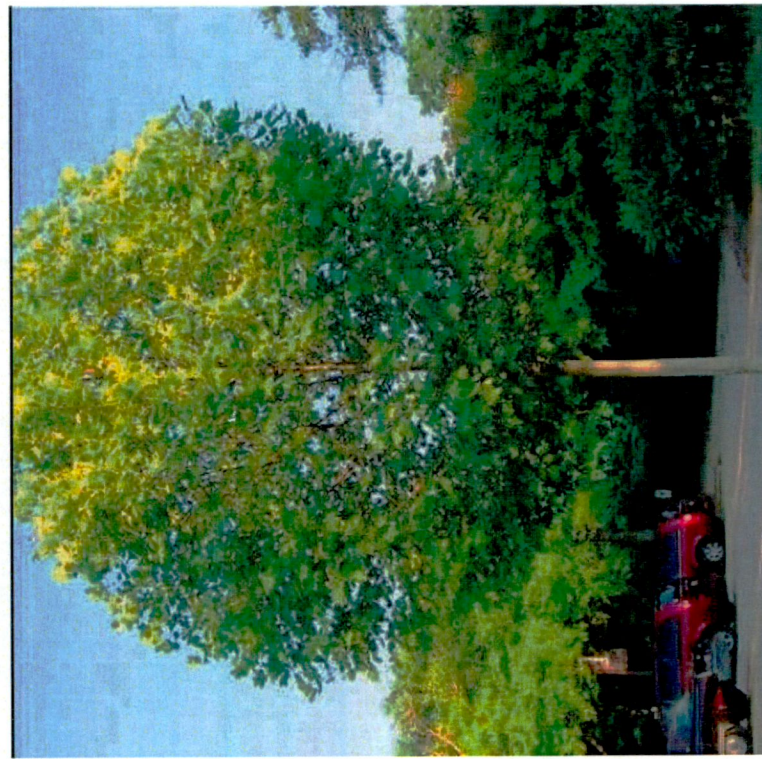
Proposed Planting



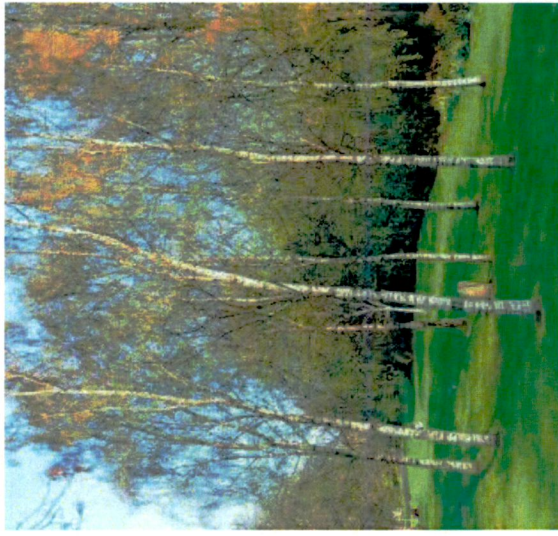
Tilia cordata 'Greenspire'



Quercus ilex – Evergreen Oak



Platanus acerifolia



Betula pendula



Acer campestre 'Elsrijk'

Proposed Tree Planting

- Acer campestre 'Elsrijk'
- Aesculus hippocastanum
- Betula pendula
- Quercus ilex
- Tilia cordata 'Greenspire'
- Platanus acerifolia

Note: Planting shown throughout rationale are mature and are not indicative of size that shall be planted first.



Ronan Mac Diarmada & Associates

Landscape Architects & Consultants

Clonbrone Lucan

Proposed Planting



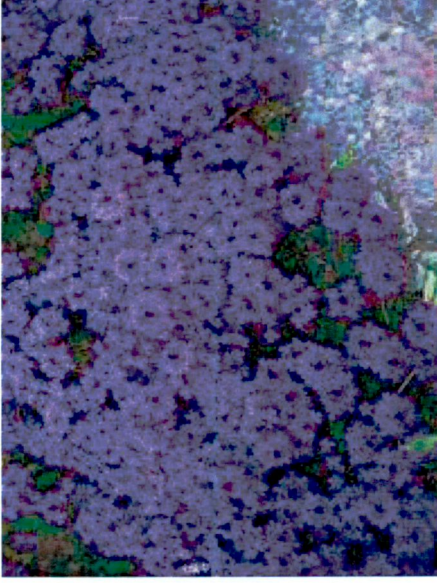
Helleborus niger



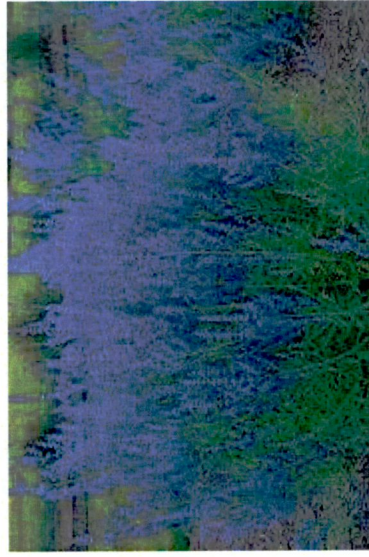
Bergenia cordifolia



Sedum spectabile



Verbena grandiflora



Perovskia atriplicifolia



Prunus laurocerasus



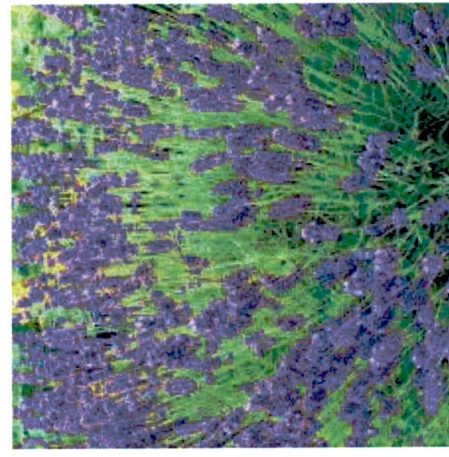
Hedera helix Hibernica



Pittosporum tobira hedge



Note: Planting shown throughout rationale are mature and are not indicative of size that shall be planted first.



Lavandula angustifolia

Proposed Ground Cover Planting		
No.	Name.	Size.
G1	Bergenia cordifolia	1L
G2	Persicaria affinis	1L
G3	Geranium 'Rozanne' (Jolly bee)	1L
G4	Hedera helix 'Hibernica'	1L
G5	Salvia nemorosa	1L
G6	Helleborus niger	1L
G7	Paeonia fruticosa	1L
G8	Ceanothus repens	1L
G9	Rubus idaeus	1L
G10	Rubus tricolor	1L

Proposed Small Shrub Planting		
No.	Name.	Size.
S1	Lavandula angustifolia	3L
S2	Verbena grandiflora	2L
S3	Cistus corbariensis	3L
S4	Hebe spp.	3L
S5	Ribes spp.	3L
S6	Cornus alba	2L
S7	Rosmarinus	1L
S8	Hypericum hidcote	2L

Proposed Climber Planting		
No.	Name.	Size.
C1	Clematis Montana	3L
C2	Hedera	2L
C3	Hydrangea petiolaris	3L
C4	Parthenocissus quinquefolia	3L

Proposed Perennial/Bulb Planting		
No.	Name.	Size.
P1	Erysimum 'Bowl's mauve'	1L
P2	Verbena grandiflora	1L
P3	Achillea spp.	1L
P4	Centaurea cyanus	1L
P5	Geranium sanguineum	1L
P6	Chrysanthemum maximum	1L
P7	Verbascum spp.	1L
P8	Perovskia atriplicifolia	1L
P9	Hemerocallis tejas	1L
P10	Kniphofia uvaria	1L
P11	Agapanthus africanus	1L
P12	Allium hollandicum	1L
S13	Ligularia ,The Rocket	1L
S14	Veronicastrum virginicum	1L
S15	Verbascum chaixii	1L

Suggested Surface Materials

Suggested Possible Driveway Materials :



Charcoal 175x140x50mm & 140x140x50mm



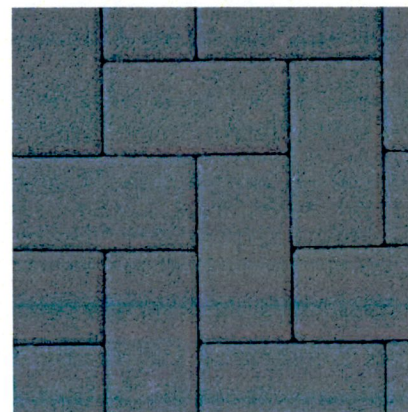
Permeable Paving for Car Parking 200x100x60 Rustic with charcoal border



Bracken 200x100x50mm



Silver 208x173x50mm & 173x173x50mm



Charcoal 200x100x50mm



Bracken 175x140x50 & 140x140x50mm

Suggested Path materials for the Open Space :



Dust Path Open Space

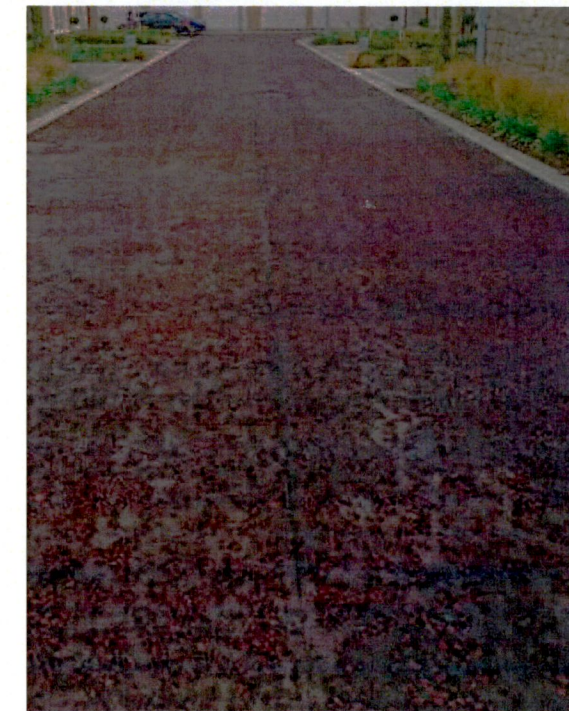


Beige tarmac

Suggested Path materials for the Road – Pedestrian Priority :



Banding To Road



Coloured Chip to Road Surface