

- NOTES**
- THIS DRAWING IS TO BE READ IN CONJUNCTION WITH RELEVANT ARCHITECTS AND ENGINEERS DRAWINGS.
 - FIGURED DIMENSIONS ONLY TO BE TAKEN FROM THIS DRAWING. ALL DIMENSIONS TO BE CHECKED ON SITE. ENGINEER TO BE INFORMED IMMEDIATELY OF ANY DISCREPANCIES BEFORE ANY WORK PROCEEDS.
 - REFER TO DRAWING 20047-DOW-0000 FOR PROJECT SPECIFICATION.



- LEGEND**
- EXISTING FOUL WATER SEWER
 - EXISTING SURFACE WATER
 - EXISTING COMBINED SEWER
 - EXISTING WATERMAIN
 - PROPOSED FOUL SEWER PIPE
 - PROPOSED SURFACE WATER PIPE
 - PROPOSED COMBINED SEWER
 - PROPOSED NEW WATERMAIN
 - EXISTING FOUL SEWER MANHOLE
 - EXISTING SURFACE WATER MANHOLE
 - PROPOSED FOUL SEWER MANHOLE
 - PROPOSED SURFACE WATER MANHOLE
 - HYDRANT
 - AJ. ◊ PROPOSED F.O.U.A.J.
 - AJ. ◊ PROPOSED SURFACE WATER A.J.
 - RG. ■ ROAD GULLY
 - BIGT. ● BACK INLET GULLY TRAP
 - ST. ⊠ SILT TRAP
 - RWP. ○ RAIN WATER PIPE
 - SS. ○ SOIL STACK
 - YG. ■ YARD GULLY
 - RE. — RODDING EYE/ACCESS HATCH
 - ± 99.950 PROPOSED LEVEL
 - ± 99.950 EXISTING LEVEL
 - WM. M WATER METER
 - SV. ∇ SLUICE VALVE
 - TB. ⊕ THRUST BLOCK
 - WB. ● WATER BUTT
 - F.M.W.S. FIRE MAIN WATER SUPPLY
 - M.W.S. METERED WATER SUPPLY

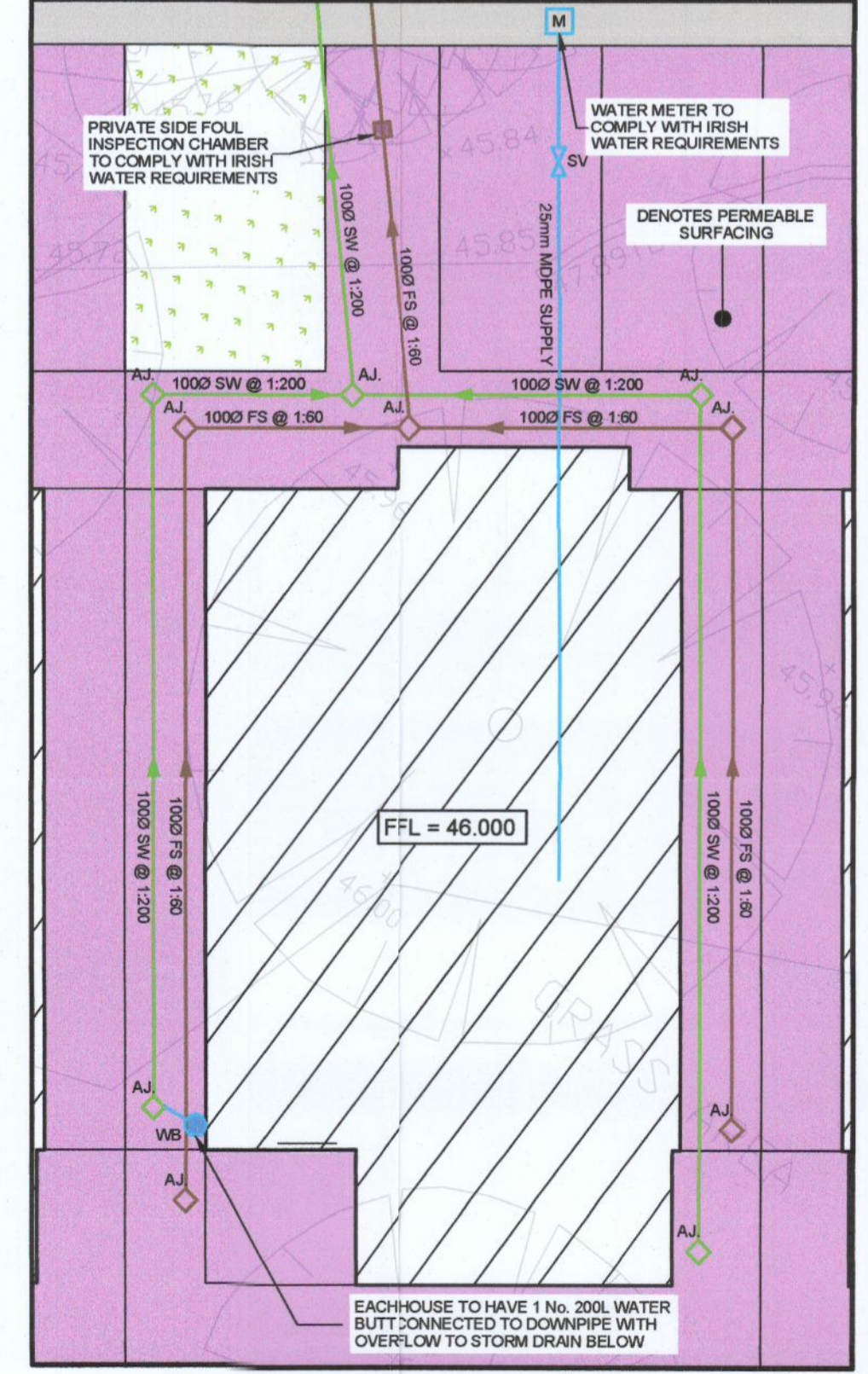
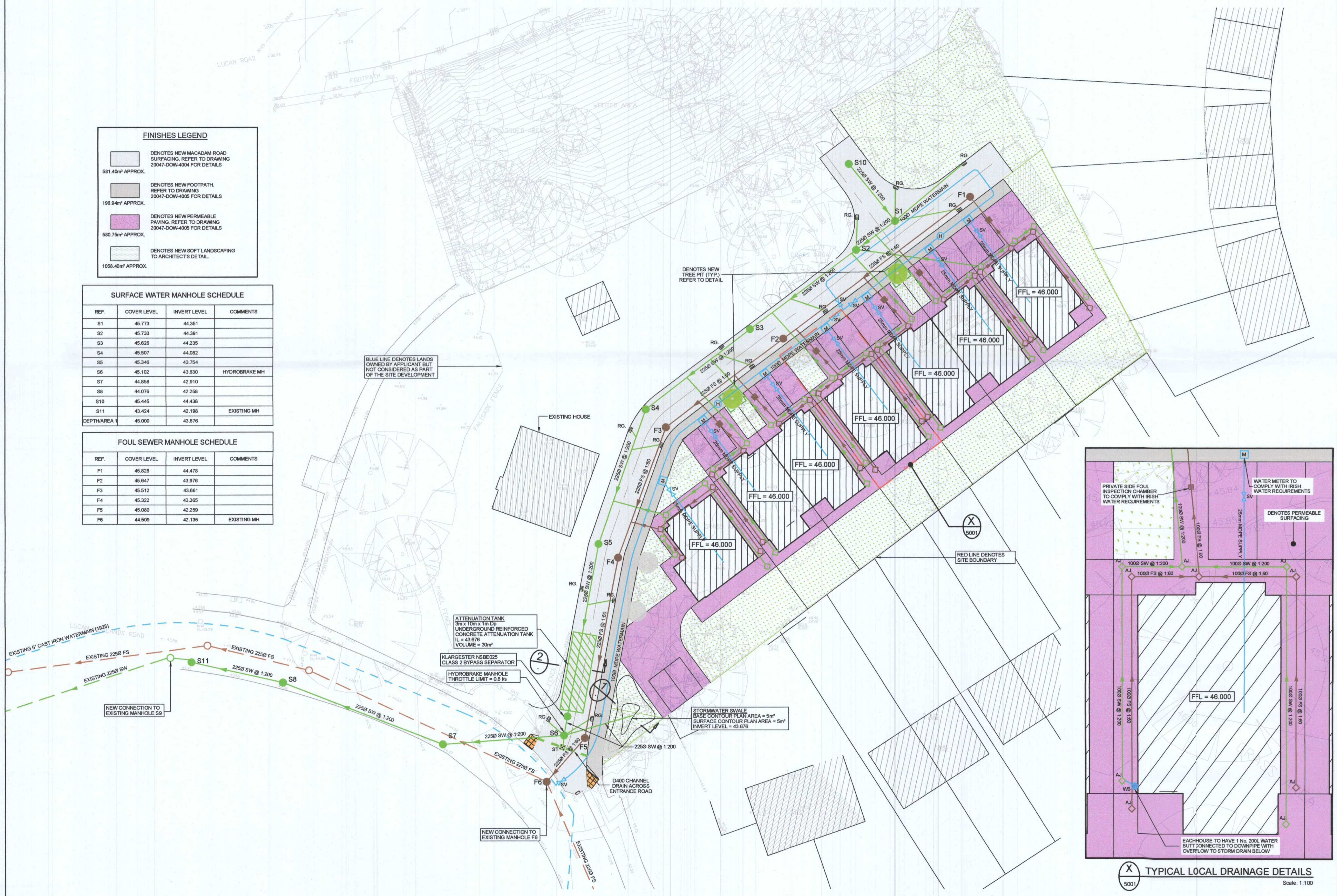
- FINISHES LEGEND**
- DENOTES NEW MACADAM ROAD SURFACING. REFER TO DRAWING 20047-DOW-4004 FOR DETAILS. 581.40m² APPROX.
 - DENOTES NEW FOOTPATH. REFER TO DRAWING 20047-DOW-4005 FOR DETAILS. 196.94m² APPROX.
 - DENOTES NEW PERMEABLE PAVING. REFER TO DRAWING 20047-DOW-4005 FOR DETAILS. 580.75m² APPROX.
 - DENOTES NEW SOFT LANDSCAPING TO ARCHITECT'S DETAIL. 1058.40m² APPROX.

SURFACE WATER MANHOLE SCHEDULE

REF.	COVER LEVEL	INVERT LEVEL	COMMENTS
S1	45.773	44.351	
S2	45.733	44.381	
S3	45.626	44.235	
S4	45.507	44.082	
S5	45.346	43.754	
S6	45.102	43.630	HYDROBRAKE MH
S7	44.858	42.910	
S8	44.076	42.258	
S10	45.446	44.438	
S11	43.424	42.186	EXISTING MH
DEPTH/AREA	45.000	43.676	

FOUL SEWER MANHOLE SCHEDULE

REF.	COVER LEVEL	INVERT LEVEL	COMMENTS
F1	45.828	44.478	
F2	45.647	43.976	
F3	45.512	43.661	
F4	45.322	43.365	
F5	45.080	42.259	
F6	44.509	42.135	EXISTING MH



Rev	Date	Amendments	by	chkd
P04	30.09.22	TREE PIT DETAILS ADDED	AG	IC
P03	20.07.22	SITE LAYOUT & DRAINAGE REVISED	AG	IC
P02	20.01.21	TITLEBLOCK REVISED	AG	IC
P01	07.12.20	ISSUED FOR PLANNING	AG	IC

PROJECT
PROPOSED HOUSING DEVELOPMENT AT CLONBRONE, LUCAN, DUBLIN 20.

CLIENT
NACUL DEVELOPMENTS Ltd.

DRAWING TITLE
PROPOSED SITE LAYOUT AND WATER SERVICES

drawn by: AG date: 04.02.22 scale: 1:250 @ A1 chk: IC

CLON - DOW - 00 - XX - DR - CE

Project	Originator	Volume	Level	Type	Role
20047	5001				P04

DOW Project No. drg. no. rev.

S0 - SUITABLE FOR PLANNING

Suitability Status: Code - Description

Cashel Business Centre,
Cashel Road, Kimmage, Dublin 12
T 01 4901611
E admin@downesassociates.ie
www.downesassociates.ie

