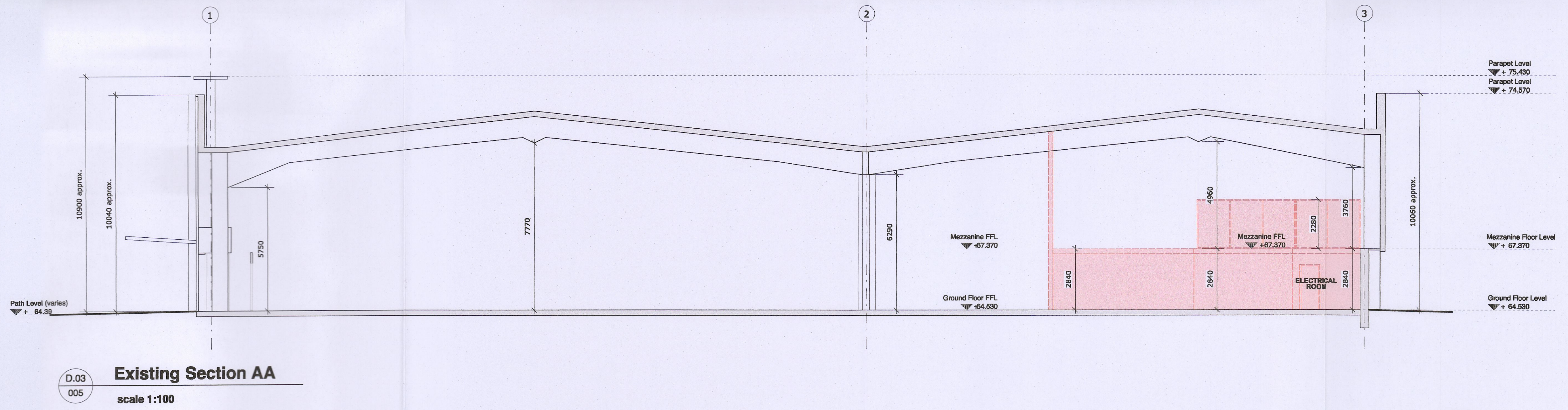
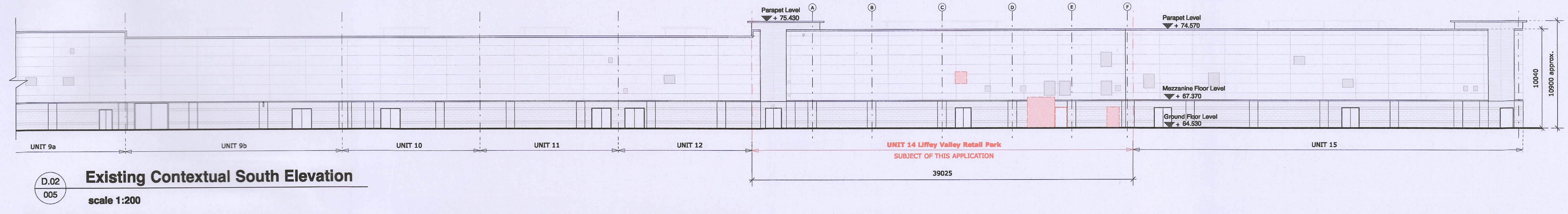
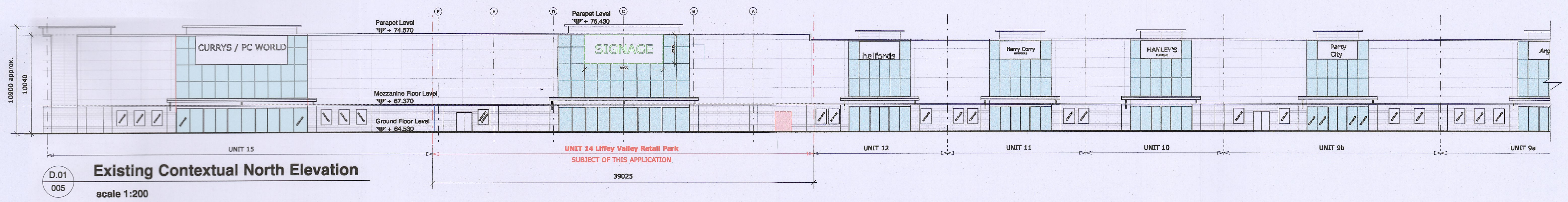


Revision	Date	Description
-	29.07.2022	Issued for Planning
A	21.10.2022	Issued for Planning RFI



studio 3 architecture
sustainable design
urban planning
project management

Mountpleasant Business Centre, Mountpleasant Ave, Ranelagh, Dublin 6. t. 353 (0)1 496 2222, e. info@studio3.ie, www.studio3.ie

PROJECT: Subdivision of existing retail unit,
Unit 14, Liffey Valley Retail Park, Dublin 22

CLIENT: Intrust Properties Company Limited By Guarantee

DRAWING: Existing Section AA & Contextual Elevations

STATUS: PLANNING - RFI	SCALE: 1:100 & 1:200 @A1	CAD REF: 2014-PLA-005	REVISION: A
DRAWN BY: M.Diver	AMENDED BY:	DRG. NO. 2014-PLA-005	
CHECKED BY: F. Doyle	ISSUED ON: 21.10.2022		

THIS DRAWING IS COPYRIGHT. DO NOT SCALE. USE FIGURED DIMENSIONS ONLY