

RED

Equinix DB8 Data Centre


Response to Planner's Comments Relating to the On- Site Power Generation Plant

Client
Equinix
Kilcarbery Park
New Nangor Road
Dublin 22
Ireland

Date 20 October 2022
File Ref RED Response to FI OSPG Report 20.10.22
Revision 001

Classification Public | Internal | Restricted | Confidential



A company of 
Impact

Contents

- 1.0 INTRODUCTION 1
- 2.0 RESPONSE TO FURTHER INFORMATION REQUEST NO 2 2
- 3.0 RESPONSE TO FURTHER INFORMATION REQUEST NO 4 9
- APPENDIX A – ESB CONNECTION APPLICATION FORM..... 1
- APPENDIX B – HISTORY OF COMMUNICATION WITH ESB 2
- APPENDIX C – GNI APPLICATION FORM AND CONNECTION DETAILS 3

Revision

REVISION	REVISION DETAILS / ISSUE TYPE	PAGE NOS	DOCUMENT PREPARED BY			DOCUMENT CHECKED BY		
			NAME	SIGNATURE	DATE	NAME	SIGNATURE	DATE
001	Final	--	JM		20/10/2022	NC		020/10/202

This document and its contents are confidential and have been prepared and are intended solely for Equinix 's information and use in relation to Equinix DB8, Dublin

Red Engineering Design Limited accepts no responsibility or liability to any other party (exception for death and personal injury) in respect of or arising out of or in connection with this document and/or its contents.

Copyright:

The copyright of this document is vested in Red Engineering Design Limited. This document may not be reproduced in whole or in part without their express written permission.

1.0 Introduction

1.1 Purpose of this Document

The purpose of this document is to provide an overview of why the Client has decided to propose the construction of an onsite power generation plant (OSPG) and also to provide a response to the request for further information Items 2 and 4, where it relates directly to the OSPG.

1.2 Overview

The Client applied for power over 22 months ago on 04/11/2020 and obtained planning approval for the data centre under SDCC Reg. Ref. SD21A/0186, on 05/05/2022. The Client has employed a consultant team who have completed detailed design documentation and the project has been competitively tendered. The Client is in the process of procuring major capital plant and equipment and has agreed terms with a General Contractor who is awaiting to commence construction.

To date there has been no confirmation from ESB regarding the technical and commercial details of power supply connection for the data centre development. In line with the project business plan, the Client is now in discussions with prospective customers and tenants who wish to lease space in the data centre. The Client needs to commence construction as soon as possible to meet the commitments being made to tenants and investors.

In order to progress with the project without an ESB power supply, the Client has taken the decision to propose the construction of an On-Site Power Generation Plant (OSPG), at the Client's expense. The purpose of the plant is to generate power until such time that ESB can make a formal technical and commercial proposal to supply power to the site.

It is the intention to provide a power plant that can operate off grid on day one and in the future, be connected and embedded into the ESB grid. The power plant will be supplied by energy provided by Gas Networks Ireland (GNI) and the plant can also run on Hydrogen/Natural Gas mix or pure Hydrogen when GNI commence distribution.

The Client and Consultant Team have met with the Commission for Regulation of Utilities (CRU) and presented the case for consideration. The CRU advised that due to the fact the development does not have a utility power connection they are unable to assess compliance with the CRU Directives for Data Centres. However, they advised that in order to build a power plant, the Client would first need planning approval and then the CRU could assess for compliance to construct and operate a power plant and issue the appropriate licenses.

2.0 Response to Further Information Request No 2

2.1 Comment from Planner's Report

Furthermore, the applicant is advised that the Planning Authority remains concerned with regard to the number and extent of large demand connections in this area and the demand for future grid reinforcements. The absence of power via Eirgrid and the use of gas-powered generators conflicts with the macro policies in the Development Plan around Energy.

- The appropriateness of the proposal for an on-site gas plant based on national, regional and local policy in terms of energy requirements and climate change, including the Government Policy Statement on Security of Electricity Supply and CRU Direction to the System Operators related to Data Centre grid connection processing;

2.2 Response to Comment

Based on the government Statement on the Role of Data Centres in Ireland's Enterprise Strategy published in July 2022, Equinix proposal for an off-grid power solution in this constrained area has been designed and foreseen while maintaining the objective to connect to the national grid as soon as possible. Once connected to the grid, the power plant will be able to contribute to the security of the national grid and the overall network de-carbonisation strategy.

2.3 Comment from Planner's Report

- provide more detail regarding the alternative sources of power generating assessed as part of the alternatives

2.4 Response to Comment

There were a number of solutions assessed before selecting Option 1 natural gas engine generators as the most suitable solution for this application. The table below details the issues and benefits with each option.

Option	Description	Summary of Assessment
1	Natural Gas Generators, reciprocating engines	<ul style="list-style-type: none"> Fuel efficiency is high and NOX and CO emissions are low compared to diesel alternatives Fuel efficiency is much better compared to turbines Smaller machine capacities (1MW) are available which helps with load acceptance and load matching Smaller plant Best suited to off grid power generation application Hydrogen ready
2	Natural Gas Generators, Turbines (Single Cycle)	<ul style="list-style-type: none"> Best performance is seen at higher loads of >30MW and is not efficient at low loads of <10MW which this project requires Typical machine sizes are >3MW and this does not suit the small load build up for this project or provide the required resilience with a small number of machines. Start up times for turbines is extremely slow and the data centre requires quick start up times from the power plant.

Option	Description	Summary of Assessment
		<ul style="list-style-type: none"> Electrical efficiency of turbines is 30% lower than gas engines Hydrogen ready
3	Diesel Generators, reciprocating Engines	<ul style="list-style-type: none"> High noise and emissions output SCR and Urea treatment required for exhaust gases Low levels of efficiency and high rate of fuel consumption Extremely large volumes of fuel to be stored on site and re-fuelling with many tankers (powered by diesel fuel) required on a weekly basis
4	Natural Gas Fuel Cells	<ul style="list-style-type: none"> Insufficient space to accommodate the plant High cost compared to reciprocating engines Lack of proven track record for resilient operation and to availability of service. Hydrogen ready

2.5 Comment from Planner's Report

- consider incorporating a portion of renewable energy generation.

2.6 Response to Planners Report

The best use of renewable energy is made at the utility level by utilising wind, solar and hydrogen. Whilst the use of on-site renewable energy was assessed for this project, it is the intent of the Client to provide a power plant solution that is ready to interface, operate and support Ireland's de-carbonised utilities when they start to come online from 2030 onwards.

By building an on-site power plant this has the biggest impact in supporting the use of renewable energy. Once the project receives a utility power supply, this will directly allow the wider transmission electrical grid to take on more input power from wind and solar sources knowing that projects like this one, can self-support power during times when the sun and wind sources are not at full levels of production.

A high-level assessment was made of the following renewable sources of energy and fuel to serve the OSPG.

Solar & Wind

Due to the lack of spare land on the site it is not possible to generate substantial power from renewable sources of power such as PV and Wind. PV cells are installed on the project to provide power to the front of house office building in the data centre, which has been recognised and accepted in the planning approval received for the data centre building.

The best use of solar and wind power is at a utility level, and once EirGrid achieve the de-carbonisation goals for the power grid, as a consumer, the Client hopes to benefit from using utility power from renewable sources, once the project receives a permanent power supply.

Bio-diesel

Bio-diesel was considered for the project, but the volume to be stored on site is in excess of 1,000,000litres and there is not sufficient space to accommodate a fuel storage facility of this scale. Also, the re-fuelling

process is problematic, and relies on multiple diesel powered tankers to deliver fuel for 2-3 times every week.

This particular option is also heavily reliant on the fuel supply chain network and any shortages in stock or problems with delivery could cause the data centre to be without power for extended periods of time which i

2.7 Comment from Planner's Report

- Details of the future proofing of the data centre and the gas power plant to adapt to an alternative energy supply

2.8 Response to Comments

The proposed power plant will be connected to the Gas Networks Ireland (GNI) low pressure network. The GNI network currently provides a natural gas supply with the sustainable decarbonising objective of blending natural gas with green Hydrogen before the end of the decade.

The power plant generators are reciprocating machines are designed to run on natural gas or any blended Natural Gas/Hydrogen mix supplied by the network. Ultimately, the power plant can operate on 100% Hydrogen which is in line wot GNI future development plans.

Once the development is connected to the Grid, it is Equinix corporate policy to purchase green energy through Corporate PPAs wherever these are available.

2.9 Comment from Planners Report

- Long term plan for the gas powered generation plant when data centre is connected to grid?

2.10 Response to comments

In the future, when the data center is connected to the ESB Network Grid, the main source of energy will be sourced Corporate PPA's for Green Energy.

The On Site Power Generation plant can still be utilised to provide full flexibility to the Grid while the plant is operating on the GNI network. The flexibility and part load capability of natural gas power plant embedded in the ESB electricity supply network will further assist in the maximisation of the countrywide renewable generation capacity and contribute to the security of supply.

2.11 Comment from Planner's Report

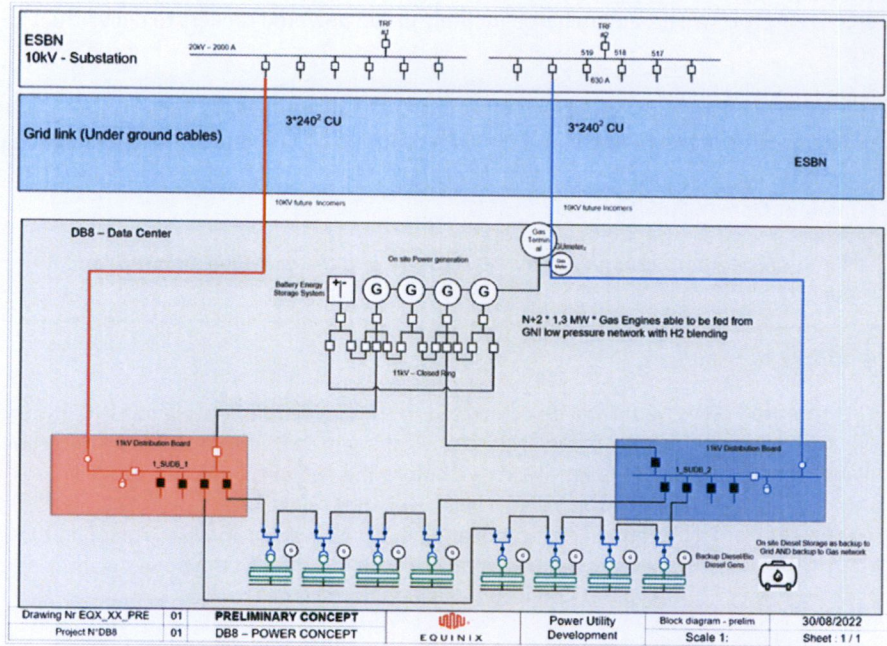
- Details of any connection agreements with Eirgrid / ESB, existing or pending, as well as details of any consultation undertaken with Eirgrid / ESB.

2.12 Response to Comments

Currently, there is no technical or commercial offer received from ESB but we have had discussions with their representatives to understand in principle the likely supply arrangements and optimum entry points to the site.

Please find below a summary of discussions and correspondence issued to date.

October 2020 – Preliminary discussions held with ESB Distribution Engineers which led to the following Energy Concept being prepared for the development which shows direct 10kV feeders terminating into a metering station located on the site.



4 November 2020 – Power supply application lodged with ESB.

15 February 2021 – Email received from ESB that application for supply was now live in their system and that they would seek approval from EirGrid for this application and the process would likely exceed 90 days.

17 May 2021 – Following the 90 day period we contacted ESB for an update and were advised that Eirgrid would need to undertake a network study and this could take several more months.

26 May 2022 – Received update from ESB advising all applications are paused and ESB will advise all applicants how to move forward with applications once direction has been received from EirGrid and CRU.

3 August 2022 - Received email from ESB confirming that discussions with CRU have concluded but they need to finalise some further points with EirGrid and CRU. On this basis, a more detailed update will be provided in a few weeks

20 September 2022 – No further updates or information received from ESB regarding the application for power.

2.13 Comment from Planner's Report

- Details of any consultation undertaken with Gas Networks Ireland

2.14 Response to Planner's Comments

Equinix has already a signed connection agreement with GNI and has paid the fees associated with this service; please refer to Annexures.

The Consultant team has met with GNI representatives on site a number of times to discuss utility landing points and has coordinated the location of gas skid/pressure station on the site.

2.15 Comment from Planner's Report

- Information on whether the existing site is serviced in terms of utilities and if not the proposals for undertaking the development required to facilitate servicing.

2.16 Response to Comment

There are no existing utilities serving the site so new utility landing points will be required and status of each are listed as follows:

- Power: Application made, await ESB response.
- Gas: Application made, agreed and payment for connection has been made.
- Water: Application will be made once planning application is complete.
- Drainage: Infrastructure has been assessed and connections agreed.
- Telecoms: Equinix to advise Status

2.17 Comment from Planner's Report

Provide details of the connection to the surrounding area and national gas grid.

2.18 Response to Comment

GNI have confirmed that the permitted development will received a 45MW Connection @400mbar. This low pressure gas supply will be served through two streams at the following rated pressures and incoming service routes are shown in the following GNI network plans.

Stream A:
Outlet set pressure = 400mbar.
Relief set pressure = 592mbar.
Slamshut set pressure = 643mbar

Stream B:
Outlet set pressure = 360mbar.
Relief set pressure = 592mbar.
Slamshut set pressure = 693mbar

Please see the following site plans which show the local distribution network and proposed connection points for the development. The blue dotted lines are the GNI low pressure network to which the development will be connected.

2.19 ESB Flex Agreement

Flex power will be subject to the ESB Supply Terms and conditions, which is currently unknown and is therefore not considered to be a planning condition relevant for this application.

3.0 Response to Further Information Request No 4

3.1 Comment from Planner's Report

The applicant is requested to provide correspondence from the Commission for Regulation of Utilities/Eirgrid that connection is feasible and the timeline for the connection, as well as details of any consultation undertaken with these bodies. The applicant is also requested to provide any details of discussions with the EPA.

3.2 Response to Comment

The Client and Consultant Team have met with the Commission for Regulation of Utilities (CRU) and presented the case for consideration. The meeting took place on 7 September 2022 and the following people were present:

- Liz Kavanagh, CRU
- Lucy Cradden, CRU
- Maurice Mortell, Equinix
- Neil Clarke, RED Engineering

The CRU advised that due to the fact the development does not have a utility power connection they are unable to assess compliance with the CRU Directives for Data Centres. But in this particular case, the CRU advised that if the site does not have a power supply, then the Client can apply for a license authorising the power plant to be constructed and to generate power.

In order to obtain these licenses and this CRU approval, planning approval from SDCC is required.

We have had no direct discussions with EPA, but the Emissions and Air Quality Consultant has advised that the on-site CO₂ emissions will occur as a result of the proposed development. But whilst the operation of the proposed development would result in direct GHG emissions, these will be regulated under the Emission Trading Scheme (ETS) and thus impact to climate is deemed direct, negative, long-term and slight. Please refer to the Air Quality and Climate Assessment Report included within this response for further information regarding the Emissions Trading scheme and approach to achieving EPA compliance.

**FORM NC3
SINGLE COMMERCIAL/INDUSTRIAL PREMISES**

ESB Networks DAC requires the information requested on this application form to enable us to set up and manage your electricity supply connection. As the Distribution System Operator, this information is also required to enable ESB Networks DAC to manage the electricity network. The data controller is ESB Networks DAC. Please refer to our privacy policy at <https://esbnetworks.ie/privacy>

APPLICATION FOR:

- Commercial/Industrial Connection**
- Increased Capacity (MIC)**
- Reduced Capacity (MIC)**

FOR OFFICIAL USE ONLY

Job no: _____

Distance: _____ R/U _____

Planner group: _____

MIC: _____ MCC _____

Contacted on: _____

Please fill in ALL sections in BLOCK CAPITALS

**1. APPLICANTS FULL NAME & SITE ADDRESS FOR CONNECTION / MIC CHANGE
(if a company or a partnership give full COMPANY OR TRADING NAME).**

M o f f a s h L t d .

L i s g r e w , E m y v a l e

C o . M o n a g h a n

VAT No 3260001JH

Please ensure that the correct title - Ltd. company / partnership / sole trader is entered above, as the Final VAT invoice will issue in that name.

For MIC changes the applicants name and address must be as is registered with the electricity supplier.

2. CONTACT NAME & ADDRESS FOR CORRESPONDENCE (if different from above)

Title: Mr Mrs Ms Company / Other Moffash Ltd,

M i c h a e l T r e a n o r

L i s g r e w , E m y v a l e

C o . M o n a g h a n

Mobile number: 0877628855 Landline: _____

You will receive an SMS text to the mobile number provided above regarding your application

Email: Michael@mtadvisoryservices.com

3. OTHER CONTACTS

Engineering Consultant: Mott MacDonald Ireland Ltd.

Address: Rockfield, Dundrum, Dublin 16

Phone Number: 012916700 Email: alan.ryan@Mottmac.com

Electrical Contractor: _____ Phone Number: _____

4. NEW CONNECTION

- New Stand Alone Commercial / Industrial Premises (Please see Note 1 on Page 4)
- Part of a Multi Unit Development (Please see Note 2 on Page 4)
- A terminated MPRN is an installation that is disconnected greater than two years and will be treated as a new connection. If you have the MPRN for this premises please insert here _____
- Other (Please explain) _____

EASTINGS: 304024 NORTHINGS: 230822 FOR NEW CONNECTIONS

Eastings and Northings refer to the Geographical location of your site from an Ordnance Survey mapping perspective. Filling in these figures is not obligatory but it will help us to locate your site.

5. SITE LOCATION AND SITE PLAN

New Connection / Terminated MPRN Please attach an Ordnance Survey map (Scale 1:2500 1:10560) showing the location of your site and a site plan (scale 1:100-1:500) showing the premises. **Note: We will not be able to process your application without these maps.**

Name of local Authority and Planning Application Number

South Dublin County Council

6. EXISTING CONNECTION

INCREASE IN MIC
 REDUCTION IN MIC
 DUoS GROUP CHANGE ONLY

Please provide 11 digit MPRN no: (Please see Note 3 on Page 4)

MPRN must be registered in Applicant's Name for existing connection. If not please contact your supplier to change.

7. NATURE OF BUSINESS

D | a | t | a | C | e | n | t | r | e

eg. manufacturing, retail, heavy industry, etc.

Expected energy usage Watts/m² (Please consult your electrical contractor.)

Production Hours hours a day days a week weeks every year

8. LOAD DETAILS (Please complete as this is essential to the completion of your application)

General Summary		Total Kilowatts (kW)				
Lighting		297				
Heat Pumps		0				
Unrestricted Space Heating		0				
Night Storage Heating		0				
Water Heating		0				
Air Conditioned & Forced Ventilation		3762				
Refrigeration		0				
Cookers		0				
Other (Power System & IT loads)		1485 & 4356				
Are you planning to install Electric Vehicle Charging Facilities? Yes <input type="checkbox"/> No <input checked="" type="checkbox"/>						
Maximum Demand of EV Charging facilities _____ (kW)						
Motive Power List the largest motor first followed by the smaller motor						
Motor Rating (More than 10kW)	Starting Demand Amps	Type of Starter (direct on line, slip ring, star-delta or soft electronic start)	Number of Starts Each Hour	General Purpose or Compressor	Quantity	Total kW
None					0	0
None					0	0
None					0	0
None					0	0
Motors less than 10kW						
None					0	0
Disturbing Loads						
Details of any welders, DC load, Thyristor controlled load or any load likely to cause voltage disturbance						
Description	kVA	Quantity	Total kVA			
IT Loads			4356			

9. MAXIMUM IMPORT CAPACITY (MANDATORY: Applications cannot be processed until this area is completed)

Maximum Import Capacity (MIC) Required kVA

Single Phase Three Phase

This figure should be based on the load details with diversity applied. Customers seeking an Increase/Reduction should state the new MIC required. A change in MIC may result in a tariff change from your supplier.

10. MAXIMUM EXPORT CAPACITY (Please visit website esbnetworks.ie)

Maximum Export Capacity (MEC) Required kVA

This is required if you intend to export electricity and or install embedded generation capacity. Please refer to esbnetworks.ie for further information on generation connections.

11. TIME OF DAY ELECTRICITY TARIFF

Do you intend to avail of a time-of-day electricity tariff from your electricity supplier? Yes No

12. GENERATION

Do you intend to have your own Standby Generation Yes No
Are you installing any other types of generation? Yes No

13. ELECTRICITY SUPPLIER

New Connections/Reconnections. **This application is for an electricity connection only.**
When you receive your 11 digit MPRN from ESB Networks DAC you need to register with an electricity supplier.
A list of electricity suppliers is available on CRU.ie

14. COMPLETION CERTIFICATE

In the interest of Safety and good practice, your electrical installation must comply with the relevant standards approved by the Electro-Technical Council of Ireland (ETCI). All new connections to the Distribution System Operator system will require the submission of a Completion Certificate, recognised by ETCI, in respect of the installation. This certificate should be signed by either a contractor who is registered for this purpose by a licensed regulatory body or an inspector of such a body. ESB Networks DAC will not complete your connection until we are in receipt of a valid Completion Certificate. The occupier or owner of the premises is responsible for its safety.

15. ADDITIONAL INFORMATION (Please supply any additional information that may help us process this application)

16. SIGNATURE OF OWNER / AUTHORIZED SIGNATORY

Signed: Michael Treanor Full Name (BLOCK CAPITALS): MICHAEL TREANOR
Position Held: COMPANY SECRETARY Date: 4/11/2020

You agree to let ESB Networks DAC connect the network to your equipment. You acknowledge that we are entitled to connect other customers to the network.

We may need evidence that you have the authority to sign this form. In relation to MIC changes, if you are a third party making this application please attach a letter of authority from the registered account holder.

DATA PROTECTION

ESB Networks DAC may use your personal data to the extent necessary (a) to set up and manage your connection agreement (b) for compliance with its licence and other legal obligations; and/or (c) for its legitimate interests (provided those interests do not conflict with your fundamental rights and freedoms) Personal data provided by you in this application form may be disclosed to other parties in the following circumstances:

- In performing its functions, ESB Networks DAC may utilise the services of contractors or other suppliers. ESB Networks DAC may disclose your data to these parties to the extent necessary to perform their functions and provided they are only permitted to use your data as instructed by ESB Networks DAC. They are also required to keep your data safe and secure.
- ESB Networks DAC may make available the existence, location and/or technical aspects of your connection to licensed electricity supply companies and other parties involved in your electricity supply. In the case of new connections, ESB Networks DAC will make available your telephone contact number to licensed electricity supply companies in order to facilitate energisation of the connection.
- ESB Networks DAC may be required by law, or our license obligations, to provide data that ESB Networks DAC holds about you, your electricity supply or connection, to government agencies or departments, the Commission for Regulation of Utilities or other third parties.
- Contact details may also be provided to a professional third party market research company for the purposes of researching your satisfaction with the services provided by ESB Networks DAC. This information may also be used to enhance our services as the Distribution System Operator.

NB PLEASE REMEMBER TO:

- Sign and Date the Application Form
- Include your O.S. map and site plan for New Connection / Terminated MPRN
- Include your MPRN if it is a terminated installation or an increase/decrease in connection
- Fill in Load details in Section 8
- Fill in your MIC in Section 9
- Fill in all contact details (a valid telephone number is essential)

PLEASE RETURN FORM TO:

ESB NETWORKS DAC, NEW CONNECTION APPLICATIONS, SARSFIELD ROAD, WILTON, CORK. T12E 367

Thank you for taking the time to fill out this application in full.

Incomplete applications will be returned. If applying for a new connection be sure to enclose maps as stated in section 5.

Business Application General Notes

NB: These notes are intended as a general guide. Please refer to the ESB Networks DAC website for a more detailed description of the application process: esbnetworks.ie

NOTE 1

- In the instance of a green field/stand alone application for a new connection where the MIC (Maximum Import Capacity) exceeds 150kVA, the customer will be required to provide a substation building on site.
- In the instance of a request for new/increased MIC in an existing development a substation building may be required. Please check with local office prior to making application.
- Where a substation building is required, electronic maps and paper copies of same should accompany all new applications.
Email: developmentmaps@esb.ie

NOTE 2

- Applicants for a unit in an existing development should contact the developer/builder/management company for the relevant MPRN for the premises.
- The MPRN details contain the MIC and DUoS group for the premises.
- You will need to contact ESB Networks DAC if the MIC for the premise concerned differs from your requirements, and complete this application form (NC3) for any change required.
- Please contact your supplier of choice for registration of the MPRN, if the details on your MPRN are correct. The list of suppliers is available on CRU.ie
- Splitting existing units into further units requires completion of this application form (NC3) in total, including electronic/paper maps.
Email: developmentmaps@esb.ie

NOTE 3

- ESB Networks DAC assigns a DUoS charge which is dependant on the MIC requested. Please see our website for further info: esbnetworks.ie
- 15kVA to 49kVA connections receive DUoS group DG5.
- Connections in excess of 49kVA Low Voltage receive DUoS group DG6.
- All MV Connections receive DUoS group DG7/DG8

MAXIMUM IMPORT CAPACITY (MIC)

What is it?

We offer customers a Connection designed around a specified capacity. The capacity of your connection is the total electrical loading for which your connection is designed. Capacity is measured in kilovolt-amperes (kVA). A kilovolt-amp is similar to a kilowatt. The capacity level for customers is described as the Maximum Import Capacity (MIC).

Business customers agree a level with ESB Networks DAC according to their specific requirements.

Why is it important?

When applying for a connection, the most important decision is the capacity level you require. The capacity of your connection – Maximum Import Capacity – is an important figure for several reasons:

- This is the capacity that ESB Networks DAC commits itself to maintain to your premises at the connection point.
- The MIC places an upper limit on the total electrical load you can use in your premises.
- The chosen MIC is a factor in determining the cost of a connection and also ongoing DUoS (use of system) charges.
These charges are published in our Statement of Charges document which is available for download from esbnetworks.ie.

How to estimate your capacity requirement

Ultimately each customer must choose the capacity which meets his/her needs. It will most likely be a much lower quantity than the sum of kilowatt ratings of all the equipment you plan to install. You may wish to discuss your required MIC further with your electrical contractor/consultant.

NOTE 4

Safety Message

- If there are any overhead electricity lines on the site these may need to be diverted or put underground before any construction works commence. Requests for line alterations should be made to ESB Networks DAC at an early stage - see esbnetworks.ie for advice on how to initiate such requests.
- Refer to the HSA Approved "ESB Networks Code of Practice for Avoiding Danger from Overhead Electricity Lines" for safety guidance in relation work in the vicinity of overhead lines - available on the HSA and ESB Networks DAC websites or order free printed copies from ESB Networks DAC. Tel. 1850 372 757.
- Refer to "HSA Code of Practice for Avoiding Danger from Buried Services" for safety guidance in relation to underground electricity cables - available on the HSA website.
- ESB lines/cables map records are available from ESB Networks Central Site at Fax. 01-6388169 or by email to: dig@esb.ie.

PLEASE REMEMBER!
DON'T BUILD UNDER OR NEAR ELECTRICITY WIRES
STAY SAFE STAY CLEAR
OF ELECTRICITY WIRES
ESB NETWORKS DAC



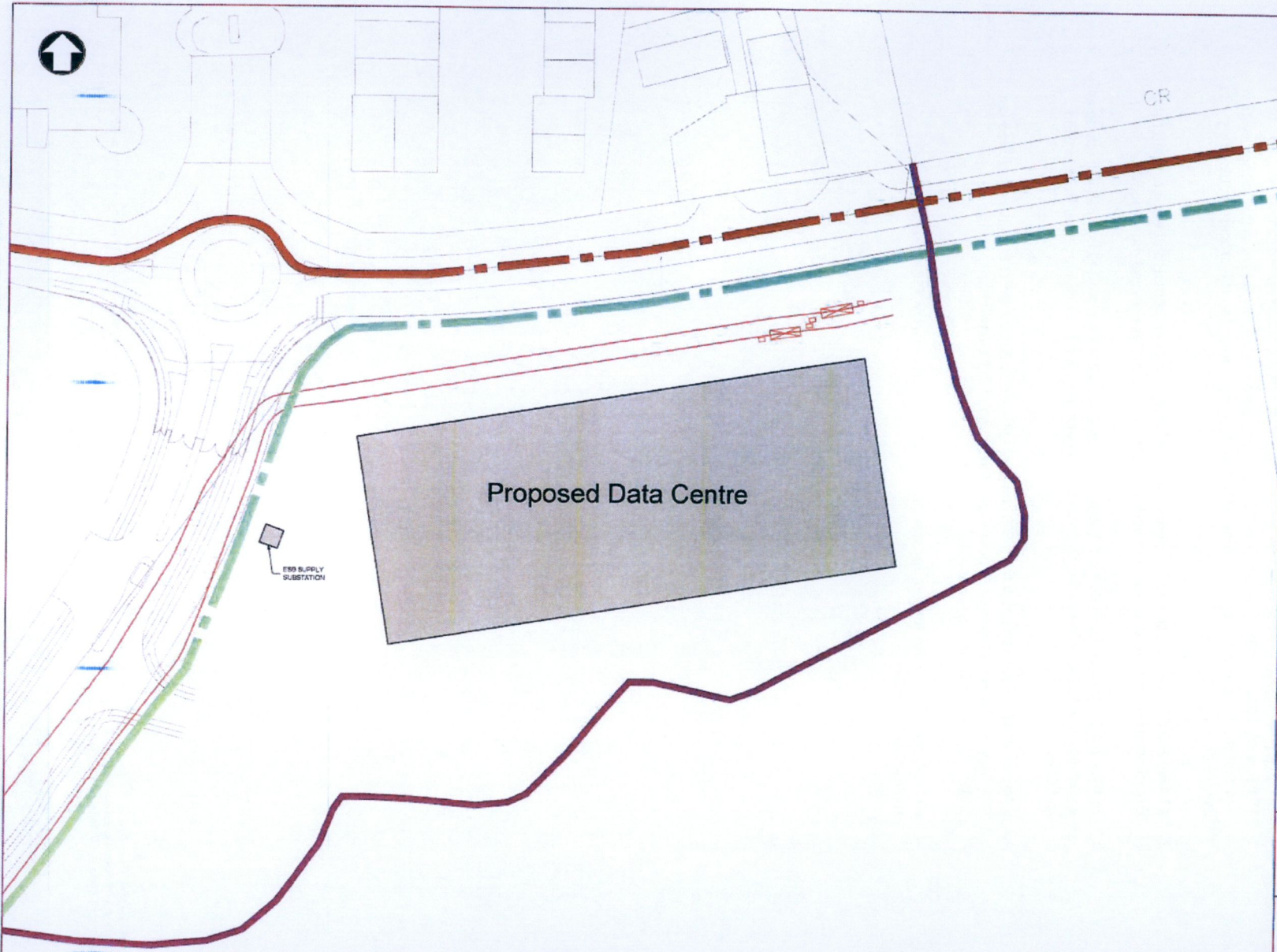
ESB Networks DAC

DIRECTORS: Jerry O'Sullivan (Chairman), Paddy Hayes, Paul Mulvaney, Caroline Spillane, Ian Talbot.

Registered Office: Clanwilliam House, Clanwilliam Court, Dublin 2, Do2 CV61, Ireland

Registered In Ireland No. 465172

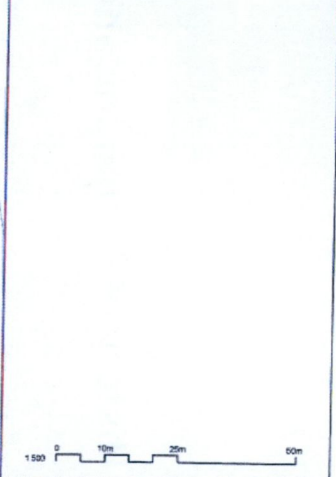




Notes

Key to symbols

	Substation Boundary
	220kV
	Existing 700 Duct
	Proposed 700 Duct



0	09/10/20	SH-Y	Issued for Connection Application	AR	JR
Rev	Date	Drawn	Description	Chk'd	App'd

M M
MOTT
MACDONALD

South Block
Riverside
Dundrum
Dublin 16
Ireland
T: +353 (0)1 291 6700
F:
W: www.mottmac.com

Client
Profile Park

Title
**Profile Park
ESBN Connection Application**

Designed	H. Connecco	Eng check	A. Ryan
Drawn	S. Healy	Co-ordinates	H. Connecco
Design check	H. Connecco	Approved	A. Ryan
Scale at A1	1:500	Status	PRE
Drawing Number	229382866-MMD-00-XX-DR-E-0006	Rev	0
		Security	STD

Substation Boundary, 220kV, Existing 700 Duct, Proposed 700 Duct

© Mott MacDonald Ireland
This document is issued to the party which commissioned it and for specific purposes connected with the contract proposed only. It should not be made available to any other party or used for any other purpose.
We accept no responsibility for the consequences of this document being read upon by any other party or being used for any other purpose or combined with any other information which is not to be used in connection with this project.

Appendix B – History of Communication with ESB

1. **15 February 2021** – Email received from ESB that application for supply was now live in their system and that they would seek approval from EirGrid for this application and the process would likely exceed 90 days.
2. **17 May 2021** – Following the 90 day period we contacted ESB for an update and were advised that Eirgrid would need to undertake a network study and this could take several more months.
3. **26 May 2022** – Received update from ESB advising all applications are paused and ESB will advise all applicants how to move forward with applications once direction has been received from EirGrid and CRU.
4. **3 August 2022** - Received email from ESB confirming that discussions with CRU have concluded but they need to finalise some further points with EirGrid and CRU. On this basis, a more detailed update will be provided in a few weeks
5. **20 September 2022** – No further updates or information received from ESB regarding the application for power.

CLARKE Neil (RED)

From: Melissa Hynes <melissa.hynes@calleng.ie>
Sent: 01 April 2021 13:07
To: CLARKE Neil (RED)
Cc: Shane Byrne
Subject: ⚠ FW: Equinix Datacentre

Planning Application No.?

From SDCC, planning reference number is **PP013/21**.

From: David Byrnes <david.byrnes@esb.ie>
Sent: 15 February 2021 15:15
To: Melissa Hynes <melissa.hynes@calleng.ie>
Cc: Pauric McEvoy <pauric.mcevoy@esb.ie>
Subject: RE: Equinix Datacentre

Thanks Melissa,

We will now set this application up on our system and will revert with a connection method. As discussed with Maurice recently this application will require a connection agreement from EirGrid so we would expect the process to exceed the 90 days.

Regards

Dave Byrnes | New Business | T: +353 87 2543441 | www.esbnetworks.ie

From: Melissa Hynes <melissa.hynes@calleng.ie>
Sent: Friday 12 February 2021 14:16
To: Byrnes. David (ESB Networks) <david.byrnes@esb.ie>
Cc: McEvoy. Pauric (ESB Networks) <pauric.mcevoy@esb.ie>
Subject: Equinix Datacentre

CAUTION: This email is from an external sender. If you are unsure about any links or attachments, please forward it to ESB Cybersecurity Operations at spammonitor@esb.ie

Hi David,

Please see attached planning acknowledgement for the Equinix datacentre as discussed previously.

Would you be able to address Sarah's query below?

Thanking you.

Kind Regards,
Melissa

From: Sarah Davey
Sent: 11 February 2021 11:43
To: Melissa Hynes ; Suzanne McClure ; Jim Sulliyon
Cc: michael.swann@red-eng.com; Declan Hughes ; thomas.cumming@red-eng.com; Hilton.McAvinchey ; Maurice

Mortell ; Johan Veulemans ; Paul Wright ; Cristina Alonso ; Wayne Aston
Subject: FW: Acknowledgement of request for Pre-Planning Consultation

Hi Melissa,

Please could you pass the planning acknowledgement to ESB so we can continue with the power application Moffash started. Can I confirm that this should start their 90 days review of the actual power request?

Please let me know what feedback you get from them/any questions.

Thanks @Suzanne/@Jim for progressing to this stage.

Thanks,
Sarah

Sarah Davey
d: +44 191 238 7491 ex: 87491
m: +44 7973 797 207

From: Suzanne McClure <suzanne@brockmcclure.ie>
Sent: 11 February 2021 11:27
To: Sarah Davey <Sarah.Davey@arup.com>
Cc: Jim Sullivan <jsullivan@rkd.ie>
Subject: [External] FW: Acknowledgement of request for Pre-Planning Consultation

Hi Sarah,

Please see attached acknowledgement from SDCC of our Pre Planning Submission.

We have a reference number – PP013/21.

Kind regards

Suzanne

Suzanne McClure

Brock McClure
Planning & Development Consultants
63 York Road
Dún Laoghaire
Co. Dublin

Suzanne@brockmcclure.ie
+353 86 233 6112
+353 1 559 3859

Please note we have implemented a remote working policy until further advised.

We are available on our mobiles, and can continue to respond to all queries as required.

From: Planning - Pre-Planning <preplanning@SDUBLINCOCO.ie>
Reply to: Planning - Pre-Planning <preplanning@SDUBLINCOCO.ie>
Date: Thursday 11 February 2021 at 11:22
To: Suzanne McClure <suzanne@brockmclure.ie>
Subject: Acknowledgement of request for Pre-Planning Consultation

Please see attachment.

Kind Regards
Julie Cummins



The information in this email is confidential and may be legally privileged. It is intended solely for the addressee. Access to this email by anyone else is unauthorised. If you are not the intended recipient, any disclosure, copying, distribution or any action taken or omitted to be taken in reliance on it, is prohibited and may be unlawful. If you have received this electronic message in error, please notify the sender or postmaster@sdblincoco.ie. This message has been swept by Anti-Virus software.

Is eolas faoi rún an t-eolas atá sa ríomhphost seo agus d'fhéadfadh go mbeadh sé faoi phribhléid ó thaobh an dlí de. Is don té ar seoladh chuige/chuici agus dósan/dise amháin an t-eolas. Ní ceadmhach do dhuine ar bith eile rochtain a bheith aige/aici ar an ríomhphost seo. Murar duit an ríomhphost seo tá nochtadh, cóipeáil, dáileadh ná aon ghníomh eile a dhéanamh nó aon ghníomh eile a fhágáil gan déanamh ar iontaoibh an ríomhphoist seo toirmiscthe ort agus d'fhéadfadh siad sin a bheith neamhdhleathach. Má fuair tú an teachtaireacht leictreonach seo trí earráid téigh i dteagmháil, le do thoil, leis an té a sheol í nó le postmaster@sdblincoco.ie. Glanadh an teachtaireacht seo le bogearraí Frithvíreas.

Electronic mail messages entering and leaving Arup business systems are scanned for viruses and acceptability of content.

An timpeallacht? - Smaoinigh air sula bpriontáileann tú an r-phost seo.
Please consider the Environment before printing this email.

* * * * *

Tá an t-eolas sa ríomhphost seo agus in aon chomhad a ghabhann leis rúnda agus ceaptha le haghaidh úsáide an té nó an aonáin ar seoladh chuige iad agus na húsáide sin amháin.

Is tuairimí nó dearchtaí an údair amháin aon tuairimí nó dearchtaí ann, agus ní gá gurb ionann iad agus tuairimí nó dearchtaí ESB.

Má bhfuair tú an ríomhphost seo trí earráid, ar mhiste leat é sin a chur in iúl don seoltóir.

Scanann ESB ríomhphoist agus ceangaltáin le haghaidh víreas, ach ní ráthaíonn sé go bhfuil ceachtar díobh saor ó víreas agus ní glacann dliteanas ar bith as aon damáiste de dhroim víreas.

<https://www.esb.ie/contact>

This email and any files transmitted with it are confidential and intended solely for the use of the individual or entity to whom they are addressed.

Any views or opinions presented are solely those of the author, and do not necessarily represent those of ESB.

If you have received this email in error please notify the sender.

Although ESB scans e-mail and attachments for viruses, it does not guarantee that either is virus-free and accepts no

CLARKE Neil (RED)

From: Byrnes. David (ESB Networks) <david.byrnes@esb.ie>
Sent: 17 May 2021 11:51
To: CLARKE Neil (RED)
Cc: Sarah.Davey@eu.equinix.com; MILLWARD Jeff (RED); Shane Byrne; McEvoy. Paucic (ESB Networks); Graham. Peter (ESB Networks)
Subject: ⚠ RE: DB8 Equinix Data Centre - Power supply Application

Neil,

All well thanks. Hope you are too.

In order to complete the DSO (ESB Networks) network study a TSO (Eirgrid) planning study will be required in order to confirm the appropriate connection method and the conditions of connection may be amended by the TSO study. While we do not currently have a definitive timeline for the TSO study to be completed, it is likely that it will not be completed for a period of up to several months. For the avoidance of doubt, the DSO connection offer can only issue following completion of the TSO study and the details of the study are made known to the DSO.

I hope this helps and please feel free to contact me directly if you have any further queries.

Regards

Dave Byrnes | New Business | T: +353 87 2543441 | www.esbnetworks.ie

From: neil.clarke@red-eng.com <neil.clarke@red-eng.com>
Sent: Monday 17 May 2021 06:50
To: Byrnes. David (ESB Networks) <david.byrnes@esb.ie>
Cc: Sarah.Davey@eu.equinix.com; jeff.millward@red-eng.com; shane.byrne@calleng.ie
Subject: DB8 Equinix Data Centre - Power supply Application

Good morning David,

Trust you are well.

We have now just passed the 90 day period since we made our application. Could you please advise the status of the application and if there is any further information required from our side to complete the process?

Kind Regards

Neil Clarke

Regional Director - EMEA

RED

m: +44 7435 924 822

CLARKE Neil (RED)

From: McEvoy, Pauric (ESB Networks) <pauric.mcevoy@esb.ie>
Sent: 26 May 2022 09:22
To: CLARKE Neil (RED)
Cc: MILLWARD Jeff (RED)
Subject: ⚠ RE: DB8 Equinix Data Centre - Power supply Application

Neil,

At this point in time all Data Centre applications to the DSO Network are paused to allow discussing between ESB Networks, EirGrid and the CRU to take place, following the publication of the CRU direction on Data Centres. ESB Networks will write to all our Data Centre applications and explain how to move forward with each application once these discussions are concluded. The Equinix Data Centre application will be one of these applications that we will respond on. We hope to be in a position to issue a more detailed response in a couple of weeks.

Regards,
Pauric.

From: neil.clarke@red-eng.com <neil.clarke@red-eng.com>
Sent: Wednesday 25 May 2022 15:24
To: McEvoy, Pauric (ESB Networks) <pauric.mcevoy@esb.ie>
Cc: jeff.millward@red-eng.com
Subject: FW: DB8 Equinix Data Centre - Power supply Application

Pauric,

Further to our Client's email to you below, can you please advise the status of the application for power supply?

Kind Regards

Neil Clarke

Regional Director - EMEA

RED

m: +44 7435 924 822

For the latest news at RED

[Visit our website](#) | [Follow us on LinkedIn](#) | [Follow us on Twitter](#)

A company of  **ENGIE**
Impact

[RED's position with respect to COVID-19](#)

From: Johnny Saliba <Johnny.SALIBA@eu.equinix.com>
Sent: 13 April 2022 13:29
To: david.byrnes@esb.ie

Cc: Sarah Davey <Sarah.Davey@eu.equinix.com>; MILLWARD Jeff (RED) <jeff.millward@red-eng.com>; BYRNE Shane (Callaghan RED) <shane.byrne@calleng.ie>; pauric.mcevoy@esb.ie; peter.graham@esb.ie; CLARKE Neil (RED) <neil.clarke@red-eng.com>; Maurice Mortell <Maurice.Mortell@eu.equinix.com>; Cristina Alonso <Cristina.Alonso@eu.equinix.com>; Graham Kelly <graham.kelly@eu.equinix.com>

Subject: ⚠ RE: DB8 Equinix Data Centre - Power supply Application

Dear Mr Byrnes

EQUINIX would like to receive from ESB a final statement on this Power Supply Application.

As a matter of fact, Irish press including RTE and the Business Post are reporting that EirGrid has confirmed that it will not connect new data centers in Dublin for 'the foreseeable future' and possibly until 2028. Data center applications already in the pipeline will be progressed.

<https://www.datacenterdynamics.com/en/news/eirgrid-says-no-new-applications-for-data-centers-in-dublin-till-2028/#:~:text=Irish%20press%20including%20RTE%20and,future'%20and%20possibly%20until%202028.>

EQUINIX is submitting a permit for the construction of an On Site Power Generation Plant off grid to bridge the gap until EIRGRID/ESB can propose grid connections.

In order to proceed to our permitting submittal, we would like to have final statement from ESB on our Power Supply Application for DB8

Looking forward to receiving your statement at your earliest convenience. And will be happy to organize a call

Best Regards

Johnny SALIBA

Senior Director, MCE CM & Grid Solutions

EQUINIX | 114 Rue Ambroise Croizat, 93200 St. Denis, Paris, France

E johnny.saliba@eu.equinix.com | M +33 6 30 14 14 22



HOW ARE WE DOING?
Please click here to Tell Equinix – We're Listening



This email is sent on behalf of Equinix, Inc. or one of its group companies in the territory from where this email has been sent. The email and any files transmitted with it are confidential and solely for the use of the intended recipient. If you have received this email in error please delete this email immediately and notify the sender.

This email is from Equinix (EMEA) B.V. or one of its associated companies in the territory from where this email has been sent. This email, and any files transmitted with it, contains information which is confidential, is solely for the use of the intended recipient and may be legally privileged. If you have received this email in error, please notify the sender and delete this email immediately. Equinix (EMEA) B.V.. Registered Office: Amstelplein 1, 1096 HA Amsterdam, The Netherlands. Registered in The Netherlands No. 57577889.

From: CLARKE Neil (RED) <neil.clarke@red-eng.com>

Sent: Monday, May 17, 2021 12:52 PM

To: david.byrnes@esb.ie

Cc: Sarah Davey <Sarah.Davey@eu.equinix.com>; MILLWARD Jeff (RED) <Jeff.millward@red-eng.com>; Shane Byrne <shane.byrne@calleng.ie>; pauric.mcevoy@esb.ie; peter.graham@esb.ie

Subject: [EXTERNAL] RE: DB8 Equinix Data Centre - Power supply Application

Thanks for the update David.

Kind Regards

Neil Clarke

Regional Director - EMEA

RED

m: +44 7435 924 822

For the latest news at RED

[Visit our website](#) | [Follow us on LinkedIn](#) | [Follow us on Twitter](#)

A company of  **ENGIE**
Impact

RED's position with respect to COVID-19

From: Byrnes. David (ESB Networks) <david.byrnes@esb.ie>

Sent: 17 May 2021 11:51

To: CLARKE Neil (RED) <neil.clarke@red-eng.com>

Cc: Sarah.Davey@eu.equinix.com; MILLWARD Jeff (RED) <jeff.millward@red-eng.com>; Shane Byrne <shane.byrne@calleng.ie>; McEvoy. Pauric (ESB Networks) <pauric.mcevoy@esb.ie>; Graham. Peter (ESB Networks) <peter.graham@esb.ie>

Subject: ⚠ RE: DB8 Equinix Data Centre - Power supply Application

Neil,

All well thanks. Hope you are too.

In order to complete the DSO (ESB Networks) network study a TSO (Eirgrid) planning study will be required in order to confirm the appropriate connection method and the conditions of connection may be amended by the TSO study. While we do not currently have a definitive timeline for the TSO study to be completed, it is likely that it will not be completed for a period of up to several months. For the avoidance of doubt, the DSO connection offer can only issue following completion of the TSO study and the details of the study are made known to the DSO.

I hope this helps and please feel free to contact me directly if you have any further queries.

Regards

Dave Byrnes | New Business | T: +353 87 2543441 | www.esbnetworks.ie

From: neil.clarke@red-eng.com <neil.clarke@red-eng.com>

Sent: Monday 17 May 2021 06:50

To: Byrnes. David (ESB Networks) <david.byrnes@esb.ie>

Cc: Sarah.Davey@eu.equinix.com; jeff.millward@red-eng.com; shane.byrne@calleng.ie

Subject: DB8 Equinix Data Centre - Power supply Application

Good morning David,

Trust you are well.

We have now just passed the 90 day period since we made our application. Could you please advise the status of the application and if there is any further information required from our side to complete the process?

Kind Regards

Neil Clarke

Regional Director - EMEA

RED

m: +44 7435 924 822

For the latest news at RED

[Visit our website](#) | [Follow us on LinkedIn](#) | [Follow us on Twitter](#)

A company of  ENGIE
ENERGY

RED's position with respect to COVID-19

An t-impeallacht? - Smaoinigh air sula bpriontáileann tú an r-phost seo.
Please consider the Environment before printing this email.

Tá an t-eolas sa ríomhphost seo agus in aon chomhad a ghabhann leis rúnda agus ceaptha le haghaidh úsáide an té nó an aonáin ar seoladh chuige iad agus na húsáide sin amháin.

Is tuairimí nó dearchtaí an údair amháin aon tuairimí nó dearchtaí ann, agus ní gá gurb ionann iad agus tuairimí nó dearchtaí ESB.

Má bhfuair tú an ríomhphost seo trí earráid, ar mhiste leat é sin a chur in iúl don seoltóir.

Scanann ESB ríomhphoist agus ceangaltáin le haghaidh víreas, ach ní ráthaíonn sé go bhfuil ceachtar díobh saor ó víreas agus ní glacann dliteanas ar bith as aon damáiste de dhroim víreas.


<https://www.esb.ie/contact>

This email and any files transmitted with it are confidential and intended solely for the use of the individual or entity to whom they are addressed.

Any views or opinions presented are solely those of the author, and do not necessarily represent those of ESB.

If you have received this email in error please notify the sender. Although ESB scans e-mail and attachments for viruses, it does not guarantee that either is virus-free and accepts no liability for any damage sustained as a result of viruses.

<https://www.esb.ie/contact>

 This symbol is automatically added to emails originating from outside of the organization. Be extra careful with hyperlinks and attachments.

CLARKE Neil (RED)

From: McEvoy, Pauric (ESB Networks) <pauric.mcevoy@esb.ie>
Sent: 03 August 2022 11:43
To: CLARKE Neil (RED)
Cc: MILLWARD Jeff (RED); Daragh.Campbell@eu.equinix.com; Kelly, Mark (ESB Networks)
Subject: ⚠ RE: DB8 Equinix Data Centre - Power supply Application

Morning Neil,

Apologies I missed your call.

Per previous communications on this issue, you will be aware that we are required to obtain an agreement from EirGrid in order to connect Datacentres to the distribution system. We have had discussions with EirGrid over the last number of months as to how the process for managing DC applications would need to be revised in light of the CRU DC Direction. These discussions have now concluded and we are meeting CRU later this month to clarify a final number of points raised in discussions with EirGrid. We therefore should be in position to provide a more detailed update in a few weeks explain what this direction means all affected sites/applications.

Regards,
Pauric.

From: neil.clarke@red-eng.com <neil.clarke@red-eng.com>
Sent: Tuesday 2 August 2022 11:56
To: McEvoy, Pauric (ESB Networks) <pauric.mcevoy@esb.ie>
Cc: jeff.millward@red-eng.com; Daragh.Campbell@eu.equinix.com
Subject: RE: DB8 Equinix Data Centre - Power supply Application

This message is from an EXTERNAL SENDER - be CAUTIOUS, Do NOT Click any links or Open any attachments if you were not expecting them.

Pauric,

Trust you are well.

I just left a message on your cell phone, could you please provide an update on the current status of our power supply application.

Kind Regards

Neil Clarke

Regional Director - EMEA

RED

m: +44 7435 924 822

For the latest news at RED

[Visit our website](#) | [Follow us on Linked In](#) | [Follow us on Twitter](#)



RED's position with respect to COVID-19

From: McEvoy. Pauric (ESB Networks) <pauric.mcevoy@esb.ie>
Sent: 26 May 2022 09:22
To: CLARKE Neil (RED) <neil.clarke@red-eng.com>
Cc: MILLWARD Jeff (RED) <jeff.millward@red-eng.com>
Subject: ⚠ RE: DB8 Equinix Data Centre - Power supply Application

Neil,

At this point in time all Data Centre applications to the DSO Network are paused to allow discussing between ESB Networks, EirGrid and the CRU to take place, following the publication of the CRU direction on Data Centres. ESB Networks will write to all our Data Centre applications and explain how to move forward with each application once these discussions are concluded. The Equinix Data Centre application will be one of these applications that we will respond on. We hope to be in a position to issue a more detailed response in a couple of weeks.

Regards,
Pauric.

From: neil.clarke@red-eng.com <neil.clarke@red-eng.com>
Sent: Wednesday 25 May 2022 15:24
To: McEvoy. Pauric (ESB Networks) <pauric.mcevoy@esb.ie>
Cc: jeff.millward@red-eng.com
Subject: FW: DB8 Equinix Data Centre - Power supply Application

Pauric,

Further to our Client's email to you below, can you please advise the status of the application for power supply?

Kind Regards

Neil Clarke

Regional Director - EMEA

RED

m: +44 7435 924 822

For the latest news at RED

[Visit our website](#) | [Follow us on Linked In](#) | [Follow us on Twitter](#)



RED's position with respect to COVID-19

From: Johnny Saliba <Johnny.SALIBA@eu.equinix.com>

Sent: 13 April 2022 13:29

To: david.byrnes@esb.ie

Cc: Sarah Davey <Sarah.Davey@eu.equinix.com>; MILLWARD Jeff (RED) <jeff.millward@red-eng.com>; BYRNE Shane (Callaghan RED) <shane.byrne@calleng.ie>; pausic.mcevoy@esb.ie; peter.graham@esb.ie; CLARKE Neil (RED) <neil.clarke@red-eng.com>; Maurice Mortell <Maurice.Mortell@eu.equinix.com>; Cristina Alonso <Cristina.Alonso@eu.equinix.com>; Graham Kelly <graham.kelly@eu.equinix.com>

Subject: ⚠ RE: DB8 Equinix Data Centre - Power supply Application

Dear Mr Byrnes

EQUINIX would like to receive from ESB a final statement on this Power Supply Application.

As a matter of fact, Irish press including RTE and the Business Post are reporting that EirGrid has confirmed that it will not connect new data centers in Dublin for 'the foreseeable future' and possibly until 2028. Data center applications already in the pipeline will be progressed.

<https://www.datacenterdynamics.com/en/news/eirgrid-says-no-new-applications-for-data-centers-in-dublin-till-2028/#:~:text=Irish%20press%20including%20RTE%20and,future'%20and%20possibly%20until%202028.>

EQUINIX is submitting a permit for the construction of an On Site Power Generation Plant off grid to bridge the gap until EIRGRID/ESB can propose grid connections.

In order to proceed to our permitting submittal, we would like to have final statement from ESB on our Power Supply Application for DB8

Looking forward to receiving your statement at your earliest convenience. And will be happy to organize a call

Best Regards

Johnny SALIBA

Senior Director, MCE CM & Grid Solutions

EQUINIX | 114 Rue Ambroise Croizat, 93200 St. Denis, Paris, France

E johnny.saliba@eu.equinix.com | M +33 6 30 14 14 22



HOW ARE WE DOING?
Please click here to Tell Equinix – We're Listening



This email is sent on behalf of Equinix, Inc. or one of its group companies in the territory from where this email has been sent. The email and any files transmitted with it are confidential and solely for the use of the intended recipient. If you have received this email in error please delete this email immediately and notify the sender.

This email is from Equinix (EMEA) B.V. or one of its associated companies in the territory from where this email has been sent. This email, and any files transmitted with it, contains information which is confidential, is solely for the use of the intended recipient and may be legally privileged. If you have received this email in error, please notify the sender and delete this email immediately. Equinix (EMEA) B.V.. Registered Office: Amstelplein 1, 1096 HA Amsterdam, The Netherlands. Registered in The Netherlands No. 57577889.

From: CLARKE Neil (RED) <neil.clarke@red-eng.com>

Sent: Monday, May 17, 2021 12:52 PM

To: david.byrnes@esb.ie

Cc: Sarah Davey <Sarah.Davey@eu.equinix.com>; MILLWARD Jeff (RED) <Jeff.millward@red-eng.com>; Shane Byrne <shane.byrne@calleng.ie>; pauric.mcevoy@esb.ie; peter.graham@esb.ie

Subject: [EXTERNAL] RE: DB8 Equinix Data Centre - Power supply Application

Thanks for the update David.

Kind Regards

Neil Clarke

Regional Director - EMEA

RED

m: +44 7435 924 822

For the latest news at RED

[Visit our website](#) | [Follow us on LinkedIn](#) | [Follow us on Twitter](#)

A company of  ENGIE
Impact

RED's position with respect to COVID-19

From: Byrnes. David (ESB Networks) <david.byrnes@esb.ie>

Sent: 17 May 2021 11:51

To: CLARKE Neil (RED) <neil.clarke@red-eng.com>

Cc: Sarah.Davey@eu.equinix.com; MILLWARD Jeff (RED) <jeff.millward@red-eng.com>; Shane Byrne <shane.byrne@calleng.ie>; McEvoy. Pauric (ESB Networks) <pauric.mcevoy@esb.ie>; Graham. Peter (ESB Networks) <peter.graham@esb.ie>

Subject: ⚠ RE: DB8 Equinix Data Centre - Power supply Application

Neil,

All well thanks. Hope you are too.

In order to complete the DSO (ESB Networks) network study a TSO (Eirgrid) planning study will be required in order to confirm the appropriate connection method and the conditions of connection may be amended by the TSO study. While we do not currently have a definitive timeline for the TSO study to be completed, it is likely that it will not be completed for a period of up to several months. For the avoidance of doubt, the DSO connection offer can only issue following completion of the TSO study and the details of the study are made known to the DSO.

I hope this helps and please feel free to contact me directly if you have any further queries.

Regards

Dave Byrnes | New Business | T: +353 87 2543441 | www.esbnetworks.ie

From: neil.clarke@red-eng.com <neil.clarke@red-eng.com>

Sent: Monday 17 May 2021 06:50

To: Byrnes. David (ESB Networks) <david.byrnes@esb.ie>

Cc: Sarah.Davey@eu.equinix.com; jeff.millward@red-eng.com; shane.byrne@calleng.ie
Subject: DB8 Equinix Data Centre - Power supply Application

Good morning David,

Trust you are well.

We have now just passed the 90 day period since we made our application. Could you please advise the status of the application and if there is any further information required from our side to complete the process?

Kind Regards

Neil Clarke

Regional Director - EMEA

RED

m: +44 7435 924 822

For the latest news at RED

[Visit our website](#) | [Follow us on LinkedIn](#) | [Follow us on Twitter](#)

A company of  **ENGIE**
Impact

RED's position with respect to COVID-19

An timpeallacht? - Smaoinigh air sula bpriontáileann tú an r-phost seo.
Please consider the Environment before printing this email.

* * * * *

Tá an t-eolas sa ríomhphost seo agus in aon chomhad a ghabhann leis rúnda agus ceaptha le haghaidh úsáide an té nó an aonáin ar seoladh chuige iad agus na húsáide sin amháin.

Is tuairimí nó dearchtaí an údair amháin aon tuairimí nó dearchtaí ann, agus ní gá gurb ionann iad agus tuairimí nó dearchtaí ESB.

Má bhfuair tú an ríomhphost seo trí earráid, ar mhiste leat é sin a chur in iúl don seoltóir.

Scanann ESB ríomhphoist agus ceangaltáin le haghaidh víreas, ach ní ráthaíonn sé go bhfuil ceachtar díobh saor ó víreas agus ní glacann dliteanas ar bith as aon damáiste de dhroim víreas.

<https://www.esb.ie/contact>

This email and any files transmitted with it are confidential and intended solely for the use of the individual or entity to whom they are addressed.

Any views or opinions presented are solely those of the author, and do not necessarily represent those of ESB.

If you have received this email in error please notify the sender. Although ESB scans e-mail and attachments for viruses, it does not guarantee that either is virus-free and accepts no liability for any damage sustained as a result of viruses.

<https://www.esb.ie/contact>

* * * * *

Appendix C – GNI Application Form and Connection Details



**Agreement for the installation of
natural gas pipeline and apparatus**
in respect of industrial and commercial connection(s)

Agreement for the installation of natural gas pipeline and apparatus

in respect of industrial and commercial connection(s)

Block capitals only

Project Number 45489517 - (DB08 - Natural Gas Supply to Equinix Ireland Limited)

Applicant(s) Name Equinix Ireland Ltd

Registered Office Equinix Ireland Ltd, Units 6 & 7 Kilcarbery Business Park, Nangor Road, Dublin 22.

Address for Gas Installation DB08: Plot 100, Profile Park, Nangor Road, Baldonnell, Dublin 22, Ireland

Number of Units Connecting to the existing 4 bar distribution network, as per attached proposal letter and Plan

I/We hereby agree to the installation of a gas supply to the above site in accordance with the Plan and Specification, a copy of which is attached hereto on the terms and conditions herein and agree to pay the sum of € 65,224.64 (inclusive of VAT @ 13.5 %) ("the Contract Sum") as a non-refundable contribution to the capital cost to be incurred by Gas Networks Ireland in relation to the installation.

Signed for and on behalf of the Applicant by

Maurice Mortell

Maurice Mortell

Authorised Official/Company Secretary/Director

Witnessed by Cristina Alonso

Address of Witness Equinix Ireland Ltd, Units 6 & 7 Kilcarbery Business Park, Nangor Road, Dublin 22.

Date 23 November 2021



Conditions



- 1 The applicant warrants that it is the freehold owner of the site, which it wishes to have supplied with gas and shall on request execute a deed of easement in the format laid down by Gas Networks Ireland from time to time and preserve the title of Gas Networks Ireland to any mains or pipes installed on the property of other persons.
- 2 The applicant agrees to comply with all applicable statutes, directions, byelaws or other lawful requirements or instruction, whether of government or of any local or other lawful authority and agrees to obtain all necessary licences, permits or authorities that may be required for the installation.
- 3 The connected unit(s) will commence using gas within 6 months of the completion of the installation otherwise any discount will become payable.
- 4 Gas/installation downstream of meter shall be the sole responsibility of the applicant.
 - (a) Downstream installation must conform to I.S. 820 & I.S. 813.
 - (b) A declaration of conformance to I.S. 820 & I.S. 813 must be obtained and provided to Gas Networks Ireland by the applicant.
- 5 The position of the gas main in relation to other services to be agreed before pipe laying commences.
- 6 Only meter compartments approved by Gas Networks Ireland can be used on the development.
- 7 The applicant will not deviate from the plans and specification without the prior consent of Gas Networks Ireland.
- 8 Prior to construction commencing on site, a meeting to be held with Gas Networks Ireland sales and construction staff to agree construction procedures and programme.
- 9
 - (a) The applicant will be solely responsible at all times for maintaining and keeping excavations and reinstatements in a safe and secure condition and will indemnify and keep indemnified Gas Networks Ireland, its servants, agents and contractors against all claims, demands, proceedings, damages and expenses whatsoever in respect thereof.
 - (b) Gas Networks Ireland shall not be liable for any claim, whether brought against the applicant or against Gas Networks Ireland, either under any statute or common law by any person arising from any cause other than Gas Networks Ireland negligence or that of its employees and the applicant shall indemnify Gas Networks Ireland against any such claim and the costs of any legal proceedings.
 - (c) The applicant will effect insurance to cover the liability undertaken by the applicant under this clause and will, upon the request of Gas Networks Ireland at any time, produce for inspection the relevant policy and the receipt for premium paid.
- 10 Payment of all sums due to Gas Networks Ireland shall be made on the due date and any overdue accounts shall be subject to an interest payment at the rate of 2% per month or part thereof until payment.
- 11* The gas meter (meters) will only be fitted on completion of a gas supply agreement with the applicants gas supplier. The gas supplier will agree the meter fit date with Gas Networks Ireland.
- 12 Gas Networks Ireland shall make all reasonable efforts to complete the installation in accordance with the agreed programme but Gas Networks Ireland shall not be liable for any loss or damage suffered by the applicant in respect of delays resulting from any cause whatsoever.
- 13
 - (a) The contract sum shall be adjusted by the amount of any increase in the cost to Gas Networks Ireland of performing this connection due to increases after the date of this agreement.
 - (b) The contract sum shall be adjusted by the amount of any increase to the cost to Gas Networks Ireland of performing this agreement due to any alteration after the date of this agreement in the rate of VAT.
 - (c) The applicant shall indemnify Gas Networks Ireland against any costs, expenses, fees or charges under any enactment or any instrument, rule or order made under any enactment and any regulations and bye-laws of any local authority in connection with the installation.
 - (d) The applicant shall indemnify Gas Networks Ireland against all costs, expenses, fees or charges arising in connection with any archaeological investigation of the installation work.
- 14 The contract sum covers the items of the specification only and unless otherwise expressly stated, does not include any of the following ancillary works required to be carried out by other trades, supply and use of access of or lifting equipment, fuel, water, gas or electric current, lighting, fees of surveyor, insurance inspectors or any other inspecting authority, excavation, reinstatement or maintenance of any trench.
- 15 Gas Networks Ireland reserves the right to employ sub-contractors to carry out the whole or part of the work.
- 16 All apparatus, pipelines and materials delivered to the site shall be at the risk of the applicant. In the event of any loss or damage from any cause whatsoever to the said apparatus, pipelines or materials (other than arising from the negligent act or omission of Gas Networks Ireland) the applicant shall indemnify Gas Networks Ireland in respect thereof.
- 17 Gas Networks Ireland will repair, or at its option, replace free of charge any materials or work found to be defective, if the defect is due to faulty manufacture or workmanship and is brought to its attention within 12 months of the completion of the work provided nevertheless that Gas Networks Ireland:
 - (a) Shall not be liable for any consequential loss or damage caused directly or indirectly by any defect or otherwise,
 - (b) Shall not be liable for loss or damage direct or indirect from any extra work entailed due to the apparatus being put into operation by the applicant or by Gas Networks Ireland at its request before it is handed over for beneficial use;
 - (c) Accepts no responsibility for any drawing, design or specification not prepared by Gas Networks Ireland.
- 18 Unless expressly stated the plans and specifications shall not be binding as to detail.
- 19
 - (a) The title to and ownership of all apparatus and pipelines installed or to be installed at the site will at all times remain and vest in Gas Networks Ireland.
 - (b) The applicant shall not do or cause or permit to be done anything which causes damage or destruction to any apparatus or pipeline, interferes with its operation or materially interferes with Gas Networks Ireland access to same.
 - (c) Gas Networks Ireland shall have the right to install and keep installed, maintained, operate and repair the apparatus and pipeline and carry out work relating to the installation, maintenance, inspection, alteration, removal, extension and replacement of the apparatus and pipeline.
- 20 Gas Networks Ireland shall be entitled to terminate this agreement without liability by written notice to the applicant if in the opinion of Gas Networks Ireland it is not practicable or economic to provide the gas installation. In the event that Gas Networks Ireland exercises its right to terminate, then Gas Networks Ireland shall return the contract sum to the applicant.
- 21 Gas Networks Ireland a designated activity company, limited by shares, incorporated in Ireland with registered number 555744 and having its registered office at Gasworks Road, Cork T12 RX96. The rights and obligations of Gas Networks Ireland under this agreement are exercised and carried out by Gas Networks Ireland pursuant to and in accordance with law and approved by the Commission for Energy Regulation. Once the installation has been completed and you have been connected to natural gas the Gas Networks Ireland Conditions for Gas Users at Non-Daily Metered (NDM) Offtake Points, attached to these Conditions, will supersede these Conditions and will govern our relationship for so long as the Premises remains connected to the gas network. If you are a Local Authority you will ensure that the resident at the Premises is furnished with a copy of the Gas Networks Ireland Terms and Conditions for Gas Users at Non-Daily Metered (NDM) Offtake Points, attached to these Conditions, and that the resident is advised that those conditions will supersede these Conditions and will govern our relationship with the resident for so long as the Premises remains connected to the gas network.

The demand information provided by Equinix Ireland Limited in year 7 is shown below:

- Estimated Annual Consumption (EAC): 9,000,000 kWh
- Peak Day (Exit Capacity): 675,000 kWh
- Maximum Hourly Quantity (MHQ): 45,000 kWh

Should you wish to advance with the connection, Gas Networks Ireland will require:

- Equinix Ireland Limited to return a completed "Agreement for the installation of natural gas pipeline and apparatus in respect of industrial and commercial connections"
- Payment in full of the estimated cost of €57,466.64 ex VAT (13.5%)

The estimated programme for the project, from conclusion of the contractual arrangements to commissioning of the supply on site, is expected to be approximately 10 months.

This offer is valid for 3 months from the date outlined above.

If you have any queries in relation to this or wish to discuss further, please do not hesitate to contact me.

Kind Regards,

Sean Crowley,
LIC Sales Manager,
Gas Networks Ireland



**EQUINIX (IRELAND)
LIMITED**
7 Kilcarbery Park
Nangor Road
Dublin 22

Ireland
Tel: +353 (0)1 461 1200
Email: www.equinix.com
IE6343301G

GAS NETWORKS IRELAND
NA
NA NA
IE

REMITTANCE ADVICE	
Contact Email	emea.vendor.support@eu.equinix.com
Payment Number	2301005932
Payment Date	06/12/2021
Bank Account Details	
Bank Name	AIB BANK
Account#	XXXX1658
IBAN#	XXXXXXXXXXXXXXXXXXXX1658
SWIFT/BIC#	AIBKIE2D

Invoice Number	Invoice Date	Amount
45489517	23/11/2021	65,224.64
EUR Total		65,224.64

Please allow at least three working days for the cleared funds to reach your account