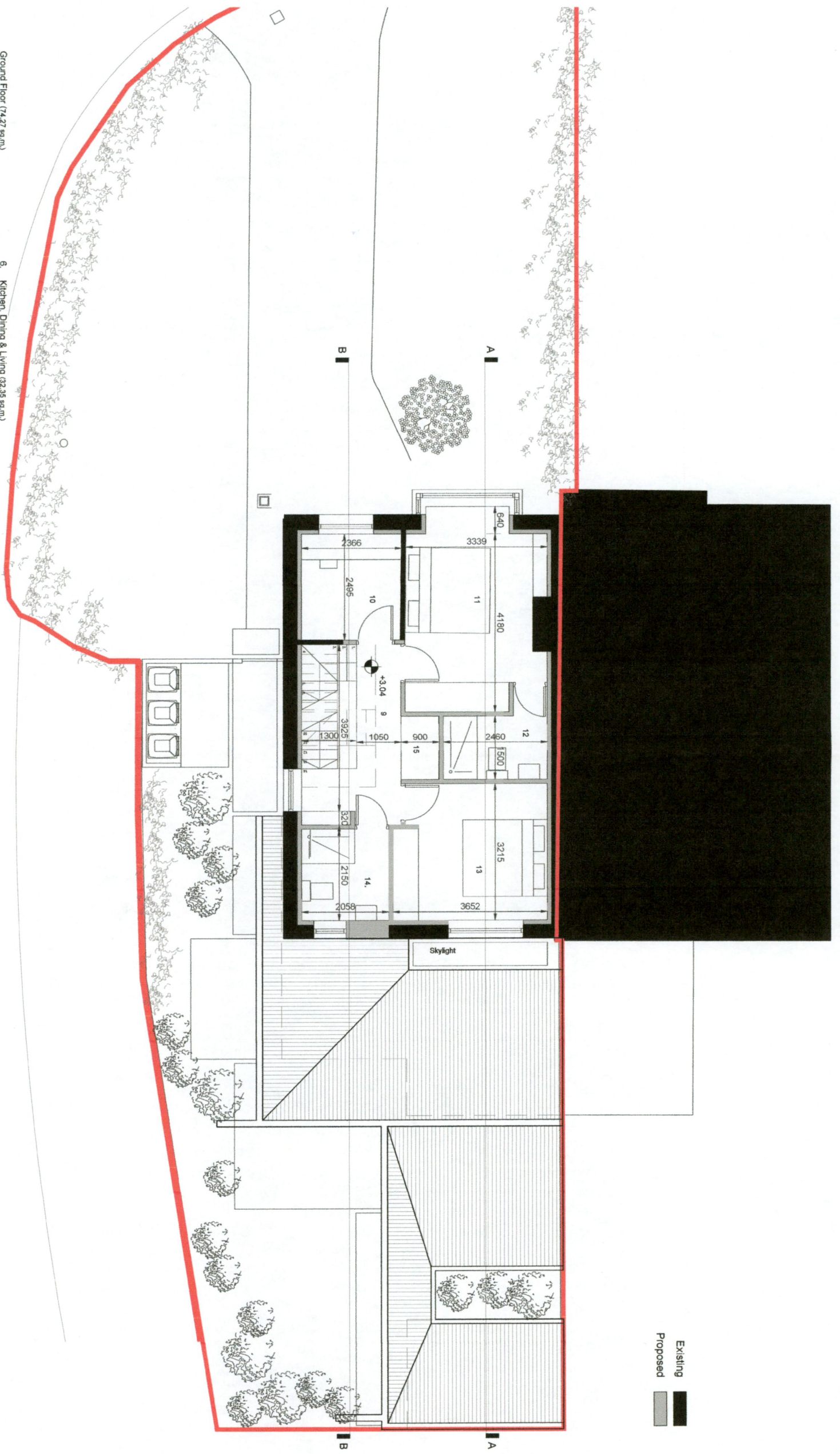


Existing
Proposed



- Ground Floor (7427 sq.m)
 First Floor (5388 sq.m)
 Attic (1382 sq.m)
 Total (14157 sq.m)
- Site Area: (35686sqm)
1. Entry/hall (850 sq.m)
 2. Living Room (2008 sq.m)
 3. Store (262 sq.m)
 4. WC (233 sq.m)
 5. Utility (441 sq.m)
 6. Kitchen, Dining & Living (3238 sq.m)
 7. Terrace (3300 sq.m)
 8. Shed(7.17 sq.m)
 9. Landing (5.78 sq.m)
 10. Office (5.87 sq.m)
 11. Master Bedroom (1425 sq.m)
 12. En suite (424 sq.m)
 13. Bedroom (1143 sq.m)
 14. Bathroom (443 sq.m)
 15. Store (135 sq.m)
 16. Attic Lobby (183 sq.m)
 17. Attic Room (1136 sq.m)



Do not scale. Use figured dimensions only. All dimensions to be checked on site. Any discrepancy between the and figured dimension to be brought immediately to the attention of the architect.