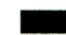
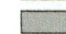
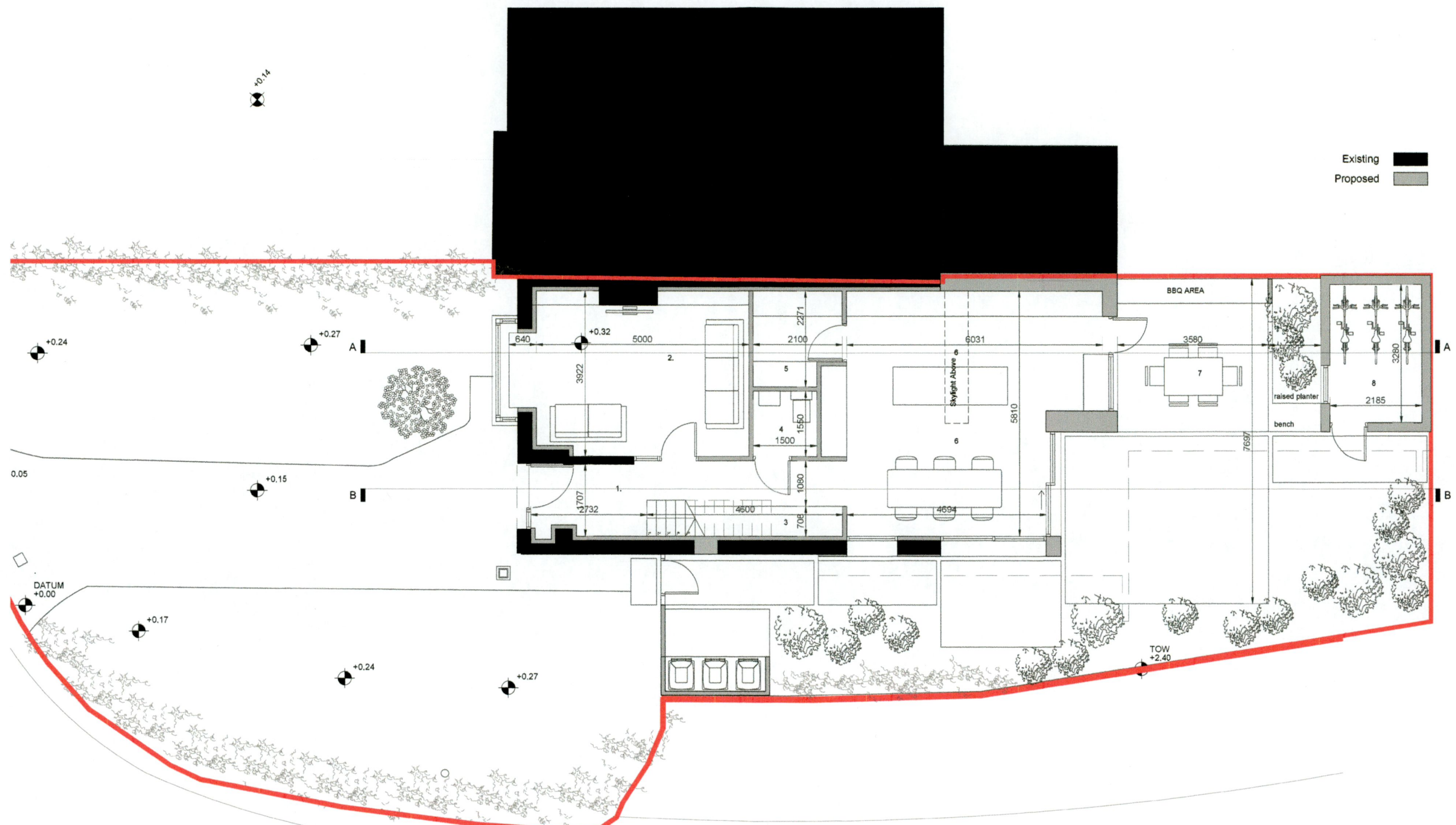


Existing 
Proposed 



- | | |
|------------------------------|---|
| Ground Floor (74.27 sq.m.) | 6. Kitchen, Dining & Living (32.35 sq.m.) |
| First Floor (53.66 sq.m.) | 7. Terrace (33.00 sq.m.) |
| Attic (13.62 sq.m.) | 8. Shed (7.17 sq.m.) |
| Total (141.57 sq.m.) | 9. Landing (5.78 sq.m.) |
| Site Area: (366.86sqm) | 10. Office (5.87 sq.m.) |
| | 11. Master Bedroom (14.25 sq.m.) |
| | 12. En suite (4.24 sq.m.) |
| 1. Entry hall (9.50 sq.m.) | 13. Bedroom 2 (11.43 sq.m.) |
| 2. Living Room (20.06 sq.m.) | 14. Bathroom (4.43 sq.m.) |
| 3. Store (2.62 sq.m) | 15. Store (1.35 sq.m.) |
| 4. WC (2.33 sq.m.) | 16. Attic Lobby (1.83 sq.m.) |
| 5. Utility (4.41 sq.m.) | 17. Attic Room (11.36 sq.m.) |

