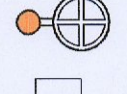
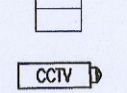
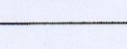
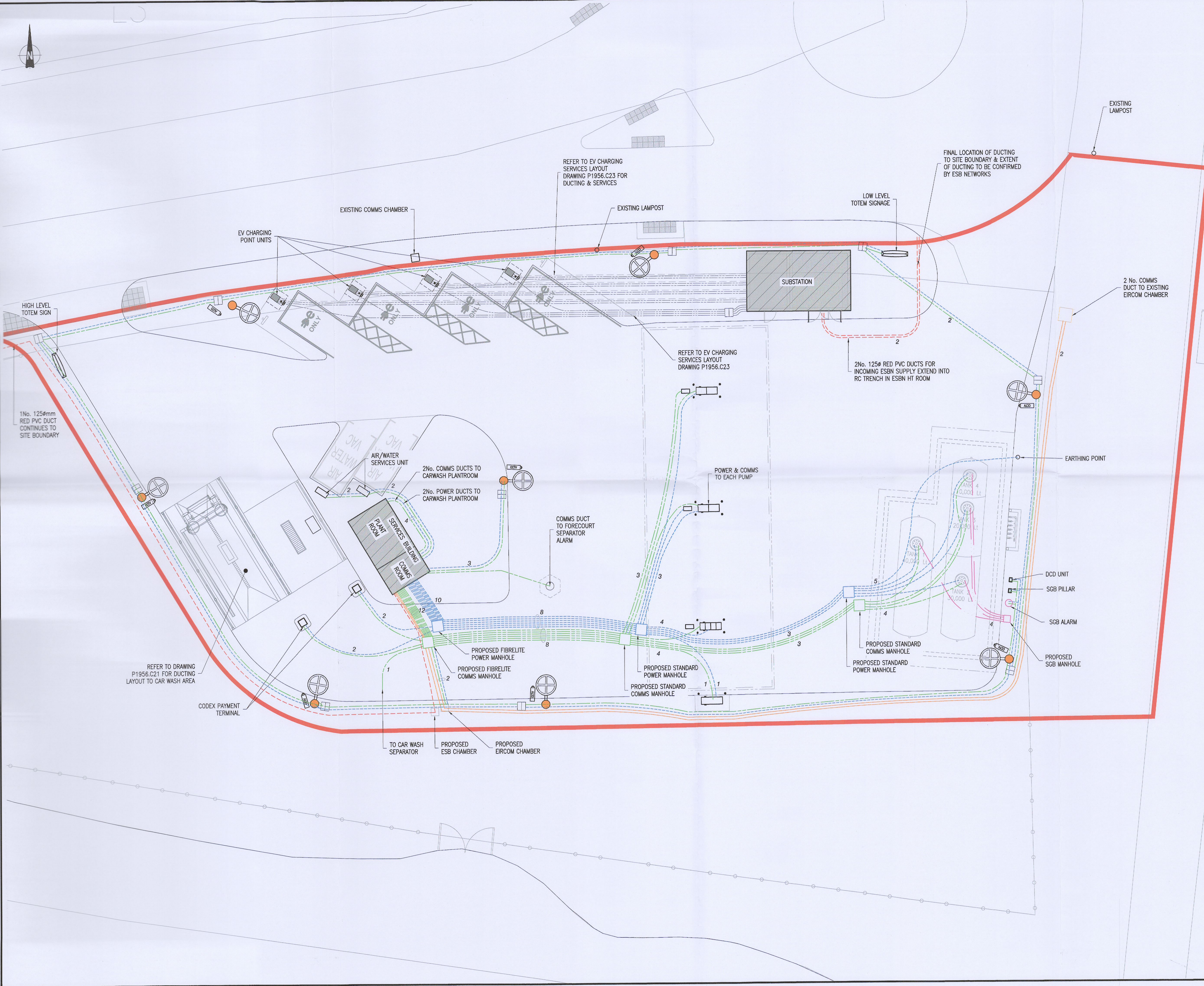


NOTES:
 THIS DRAWING IN WHOLE OR IN PART SHALL NOT BE COPIED WITHOUT THE PRIOR PERMISSION OF McARDLE DOYLE LTD.
 ALL WORKS TO COMPLY WITH THE CURRENT BUILDING REGULATIONS.
 DO NOT SCALE.
 ORDNANCE SURVEY IRELAND LICENCE No. AR 0105722
 © ORDNANCE SURVEY IRELAND / GOVERNMENT OF IRELAND

LEGEND

- 110mmØ COMMUNICATIONS DUCT
- 110mmØ ELECTRICAL DUCT (POWER)
- 7 NUMBER OF DUCTS
- SGB DUCT SYSTEM
- 125mmØ ESB DUCT
- 100mmØ ESB DUCT TO EXISTING EIRCOM CHAMBER
-  SINGLE HEAD LIGHTING COLUMN WITH OUTREACH ARM
-  600x600mm DUCT CHAMBER
-  LOCATION OF CCTV UNIT



Rev.	Description	By	Date
-	ISSUED FOR PLANNING	GDR	09.09.22

McArdle Doyle
 Second Floor
 Exchange Building
 The Long Walk
 Dundalk, Co. Louth

Chartered Engineers
 Architectural Services
 & Project Managers

mail@mcardleidoyle.ie
 +353(0) 42 942 9052

PROJECT:
 UNMANNED SERVICE STATION,
 LIFFEY VALLEY



DRAWING TITLE:
 PROPOSED SITE SERVICES
 LAYOUT

Date	Drawn	Checked	Approved
09/09/22	GDR	RMA	RMA
Scale at A1 1:125	Drawing Number P1956.C06	Status PL	Rev. -