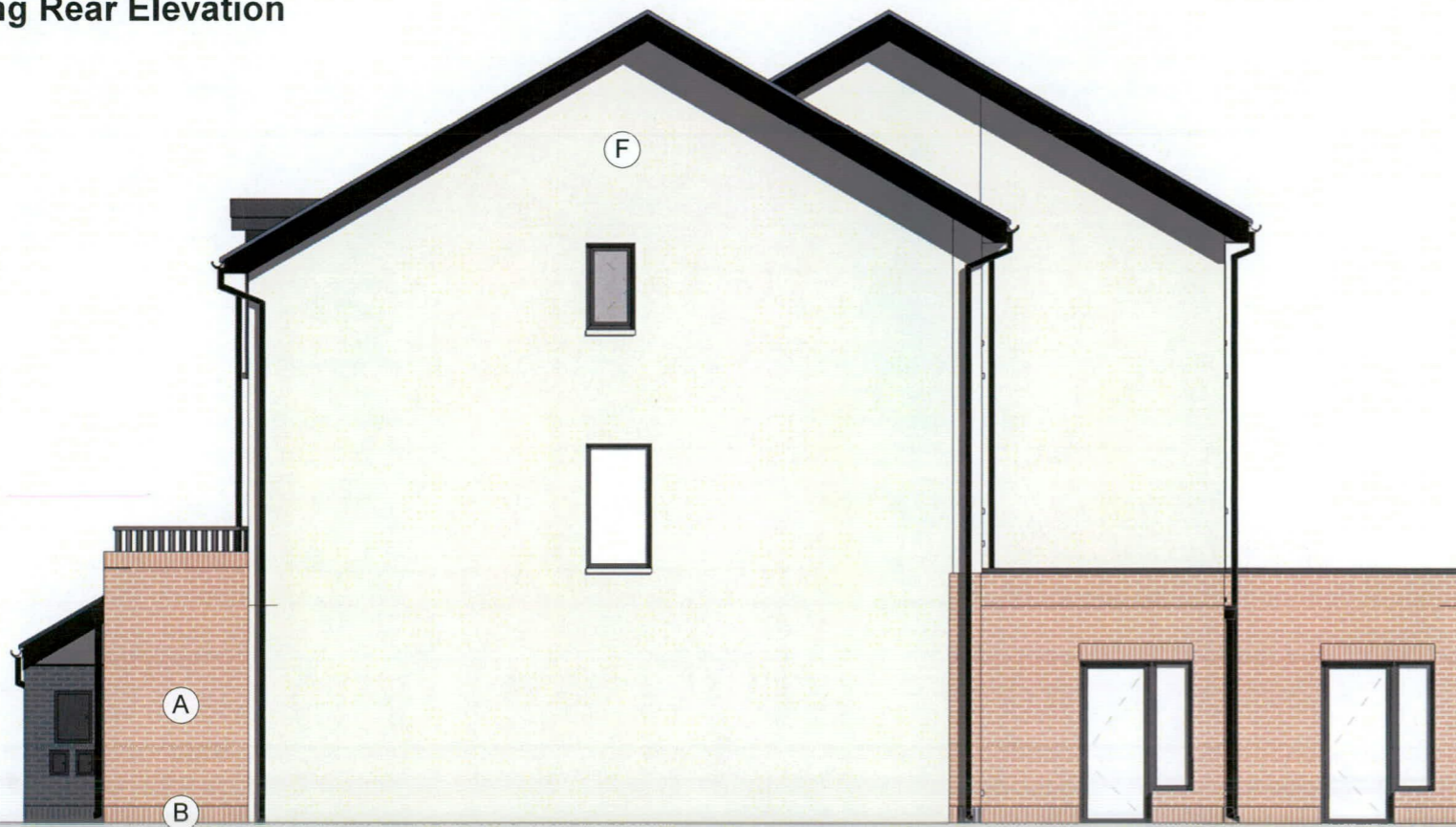




Existing Rear Elevation

1 : 100



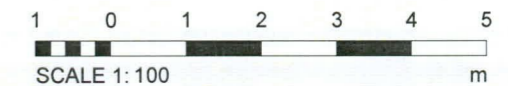
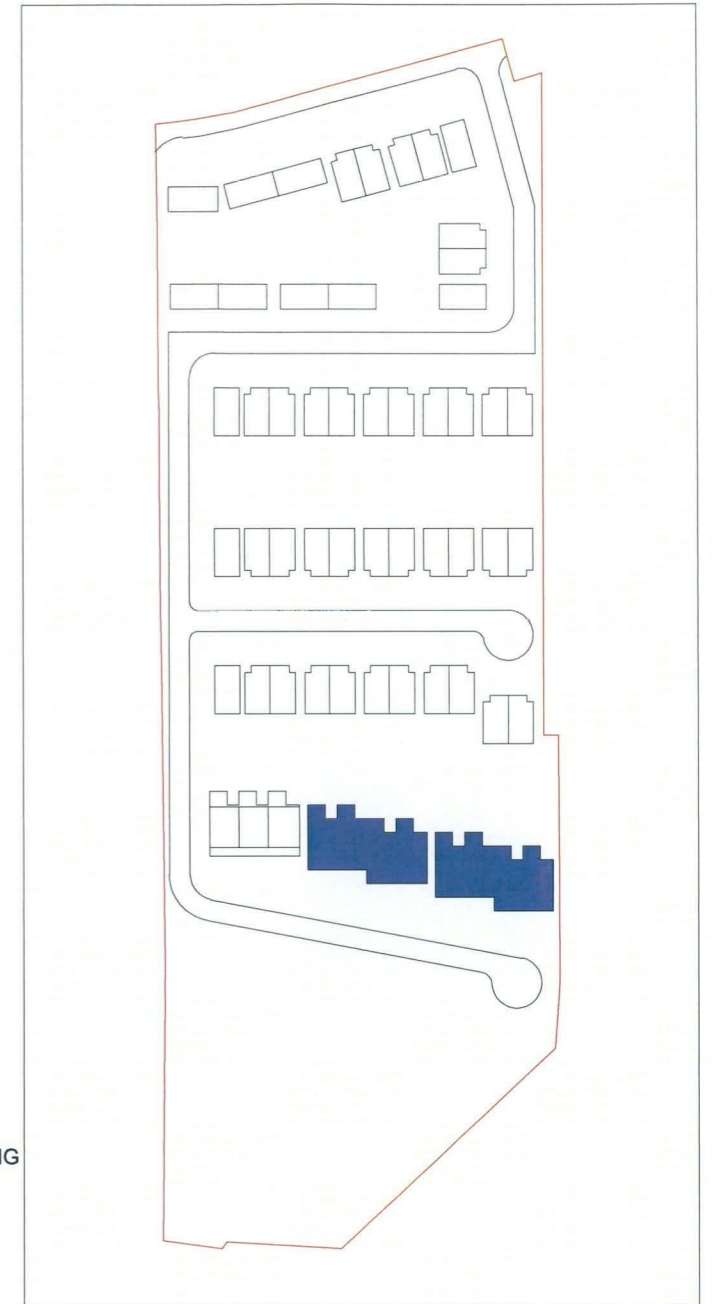
MATERIALITY

- (A) OLD ENGLISH BUFF BRICK STRETCHER BOND
- (B) OLD ENGLISH BUFF BRICK SOLDIER COURSE
- (C) OLD ENGLISH RED BRICK STRETCHER BOND
- (D) OLD ENGLISH RED BRICK SOLDIER COURSE
- (E) GREY GLAZED BRICK STRETCHER BOND
- (F) PIGMENTED WHITE RENDER
- (G) COATED ALUMINIUM CLADDING WITH STANDING SEAMS RAL 7015
- (H) BLUE-GREY SMOOTH FIBRE CEMENT TILE
- (I) TURF BROWN SMOOTH FIBRE CEMENT TILE
- (J) GREY GLAZED BRICK SOLDIER COURSE
- (K) OLD ENGLISH BUFF BRICK RELIEF PANEL
- (L) OLD ENGLISH RED BRICK RELIEF PANEL
- (M) IKO ARMOURPLAN PVC ROOFING MEMBRANE
- (N) ALUMINIUM COPING

Existing Side Elevation 2

1 : 100

KEY PLAN



Copyright reserved

All dimensions to be checked on site before work commences. Figured dimensions to be taken in preference to scaled dimensions. If in doubt please ask.

**EXISTING
(PLANNING APPROVED)**

Revision	Description	Date
P1	For Review	11/08/22

STATUS Planning
PROJECT Kiltipper Road
DRAWING Unit Type Dx4 GA Elevations_2-2

DRAWN BY DSR	CHECKED BY DSR	DATE Aug '22
SCALE (@ A3) 1 : 100		PROJECT NUMBER 19003
DRAWING NUMBER KIL - DAR - UD - XX - DR - A -0143_2		REV P1
<small>Project Identifier</small>	<small>Originator</small>	<small>Zone</small>
<small>Level</small>	<small>Type</small>	<small>Discipline</small>
<small>Number</small>	<small>Revision</small>	



Delta Architects
1 Batemans Row
London
EC2A 3HH
T 020 7613 5702