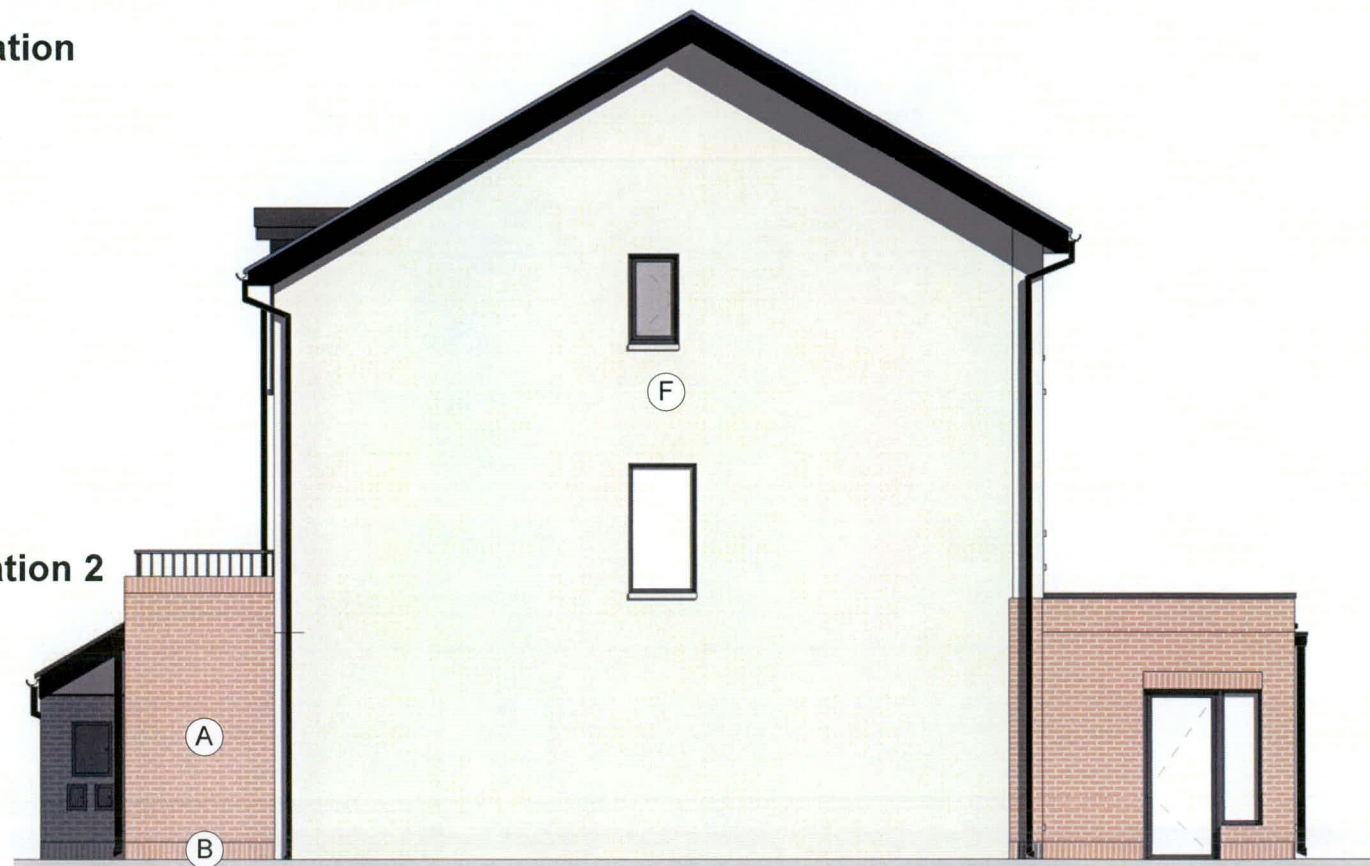




Existing Rear Elevation

1 : 100



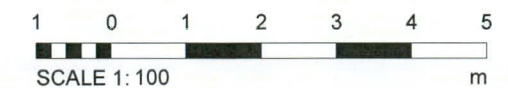
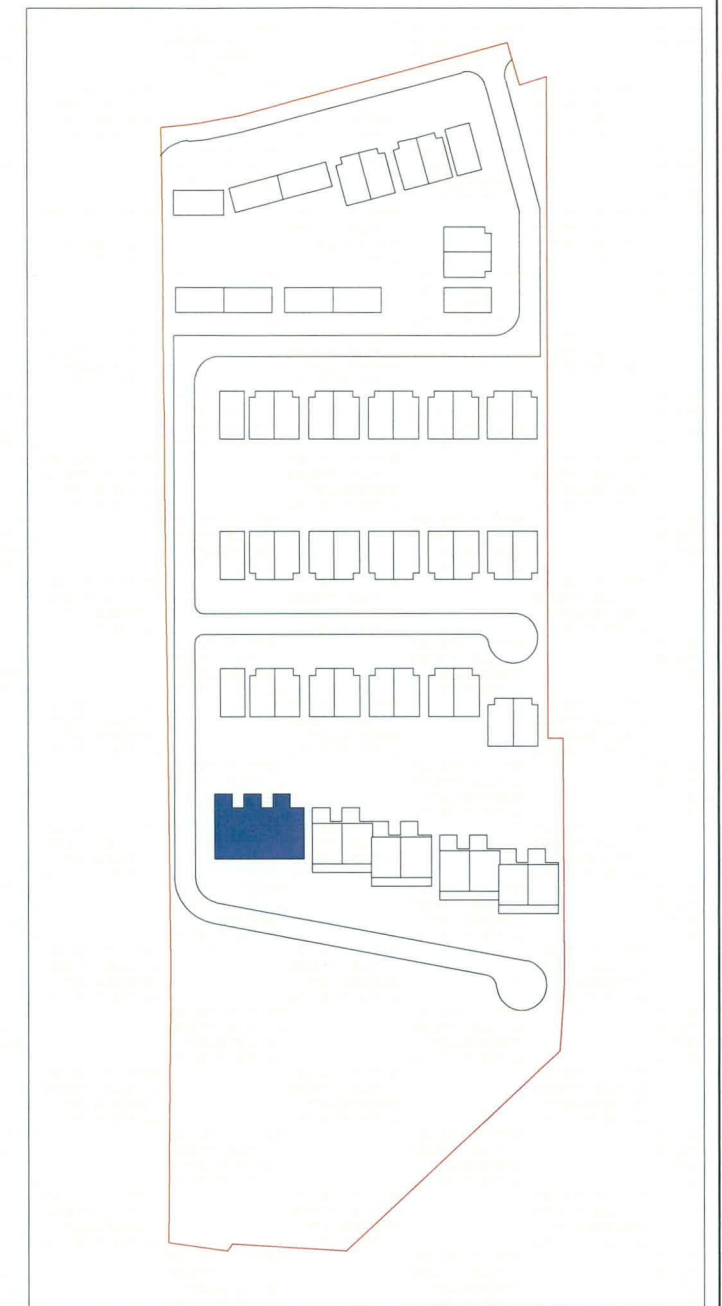
Existing Side Elevation 2

1 : 100

MATERIALITY

- (A) OLD ENGLISH BUFF BRICK STRETCHER BOND
- (B) OLD ENGLISH BUFF BRICK SOLDIER COURSE
- (C) OLD ENGLISH RED BRICK STRETCHER BOND
- (D) OLD ENGLISH RED BRICK SOLDIER COURSE
- (E) GREY GLAZED BRICK STRETCHER BOND
- (F) PIGMENTED WHITE RENDER
- (G) COATED ALUMINIUM CLADDING WITH STANDING SEAMS RAL 7015
- (H) BLUE-GREY SMOOTH FIBRE CEMENT TILE
- (I) TURF BROWN SMOOTH FIBRE CEMENT TILE
- (J) GREY GLAZED BRICK SOLDIER COURSE
- (K) OLD ENGLISH BUFF BRICK RELIEF PANEL
- (L) OLD ENGLISH RED BRICK RELIEF PANEL
- (M) IKO ARMOURPLAN PVC ROOFING MEMBRANE
- (N) ALUMINIUM COPING

KEY PLAN



Copyright reserved

All dimensions to be checked on site before work commences. Figured dimensions to be taken in preference to scaled dimensions. If in doubt please ask.

**EXISTING
(PLANNING APPROVED)**

Revision	Description	Date
P1	For Review	11/08/22

STATUS Planning
PROJECT Kiltipper Road
DRAWING Unit Type Dx3 GA Elevations_2-2

DRAWN BY DSR	CHECKED BY DSR	DATE Aug '22
SCALE (@ A3) 1 : 100		PROJECT NUMBER 19003
DRAWING NUMBER KIL - DAR - UD - XX - DR - A -0142_2		REV P1
<small>Project Identifier</small>	<small>Originator</small>	<small>Zone</small>
<small>Level</small>	<small>Type</small>	<small>Discipline</small>
<small>Number</small>	<small>Revision</small>	



Delta Architects
1 Batemans Row
London
EC2A 3HH
T 020 7613 5702