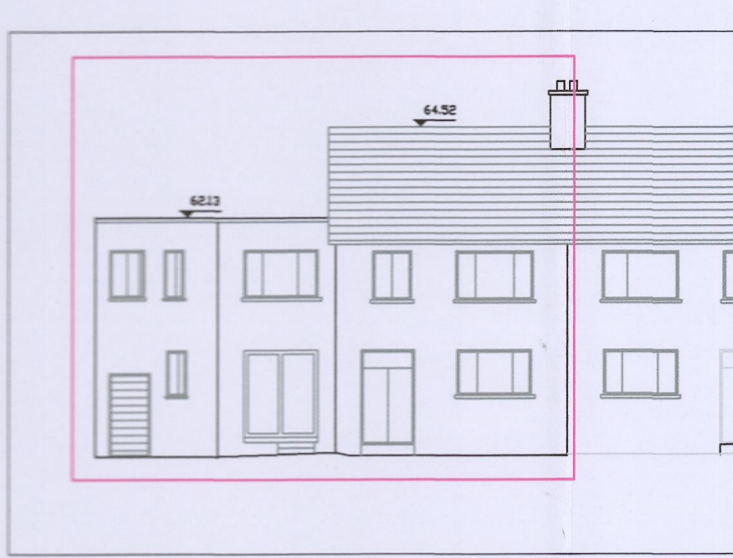
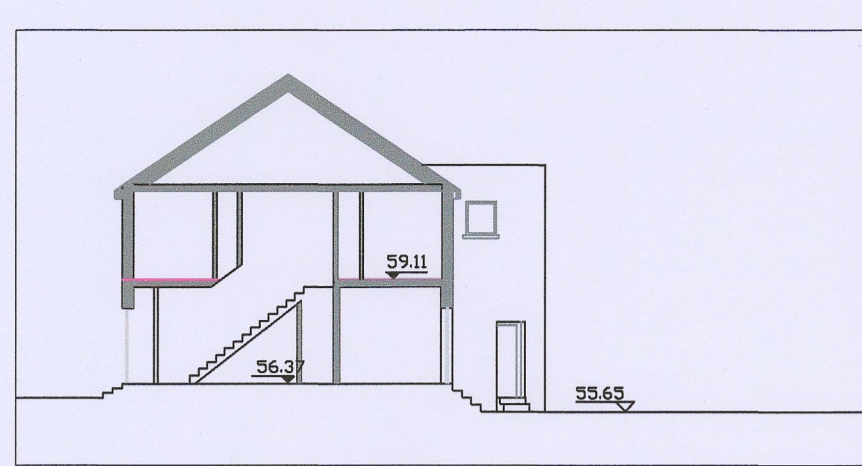


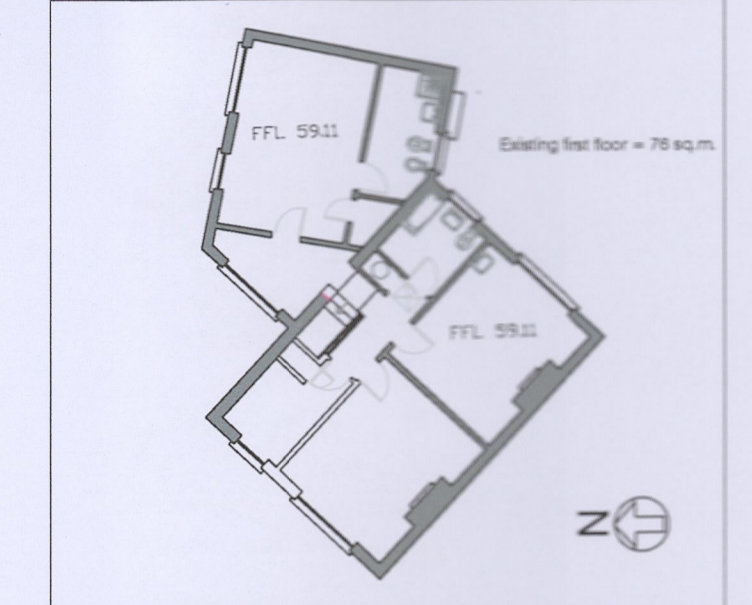
NO 51 GRANGE PARK  
EXISTING GROUND FLOOR PLAN 1:200



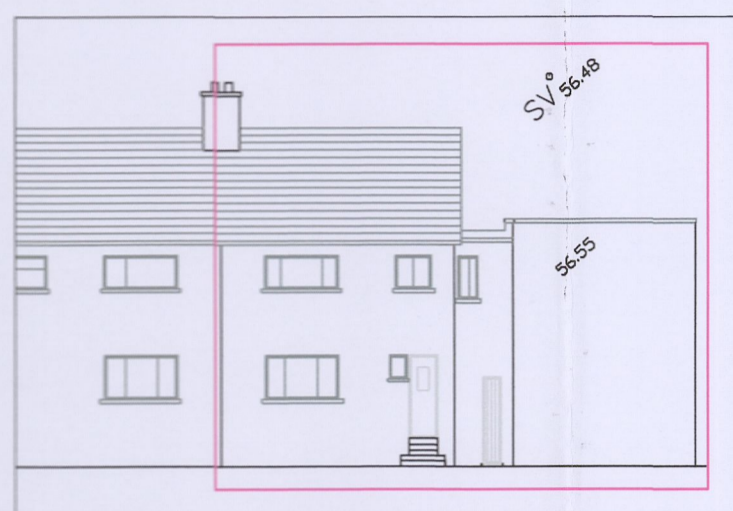
NO 51 GRANGE PARK  
EXISTING SOUTH WEST ELEVATION 1:200



NO 51 GRANGE PARK  
EXISTING SECTION B-B 1:200



NO 51 GRANGE PARK  
EXISTING FIRST FLOOR PLAN 1:200



NO 51 GRANGE PARK  
EXISTING NORTH ELEVATION 1:200

**NO 51 GRANGE PARK  
AS EXISTING  
(For proposed  
extension and alteration  
see Drg. P02)**

**FOUL WATER DISPOSAL**

Foul water from the development will be connected to the existing system in accordance with Irish Water requirement. Structure is kept > 3.0m away from existing 225 sewer. A way leave agreement will be entered into as part of the connection agreement and removable fencing with posts either side of the drain will be agreed locally

**SURFACE WATER DISPOSAL**

The surface water from the new and revised roofs is to be taken to a new infiltration blanket designed to the CIRIA guide. An infiltration test has been carried out and the percolation characteristics were found to be good.

The i value of the soil is 2.33 E -05 m/s or 0.084 m/hour. Allow for a Factor of safety of 3 the value of 0.028m/hour is used.



**DRAINAGE (1:200)**

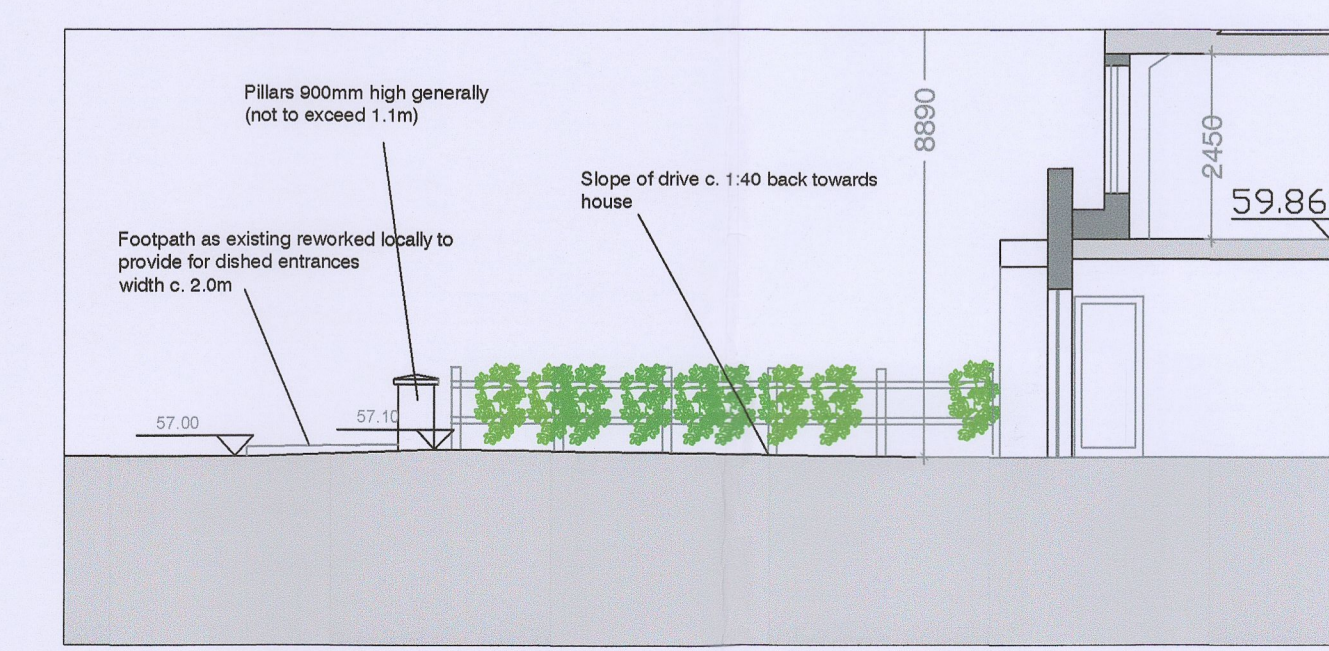
**HOUSES AT ST. PATRICKS COTTAGES**

<b>AQUACELL INFILTRATION BLANKET</b>	
q (m <sup>3</sup> /hour)	0.028 Area drained 83
n (percentage voids)	0.96 sq. m.
Length	3
Width	4
Area base	12
R=	6.91666667

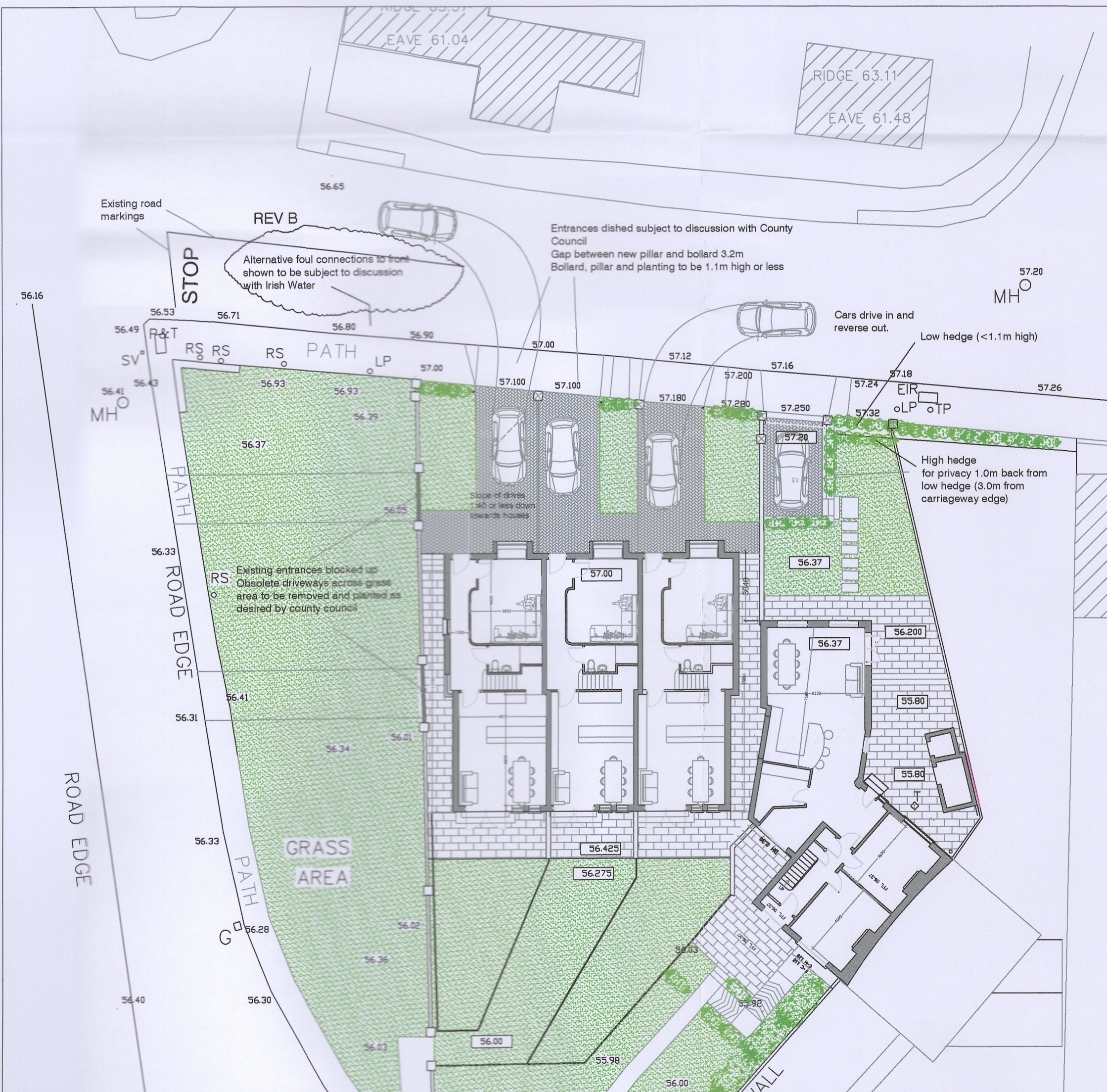
Intensity (m/h)	Duration (m)	Hmax (m)	
0.0750	0.167	0.09	30 year
0.064	0.25	0.11	30 year
0.0422	0.5	0.14	30 year
0.027	1	0.17	30 year
0.0060	6	0.17	30 year
0.0049	12	0.07	30 year
0.0029	24	-0.20	30 year
0.0018	48	-0.80	30 year
0.0080	6	0.17	30 year
0.0102	6	0.27	100 year

Climate change factor 1.1

Intensity (m/h)	Duration (m)	Hmax (m)	
0.0925	0.167	0.10	
0.0704	0.25	0.12	
0.04642	0.5	0.15	
0.0297	1	0.19	
0.0088	6	0.21	
0.0054	12	0.12	
0.0032	24	-0.15	
0.0019	48	-0.73	
0.0088	6	0.21	30 year
0.0112	6	0.31	100 year



**SECTION THROUGH ROAD AND DRIVEWAY  
House B shown (1:100)**



**VEHICULAR ENTRANCE DETAILS (1:200)**

**AquaCell Eco**

**Soakaway - non-traffic loading**

**Product description**  
AquaCell Eco is manufactured from specially reformulated, recycled material and has been specifically designed for shallow, non-traffic, landscape applications. AquaCell Eco is NOT suitable for locations subject to high water tables.

**Technical specification**

Product code / BAP code	BL3035 / 4040288	Void ratio	90%
Colour	Black	Material	Recycled PP
Dimensions	1m x 0.5m x 0.4m	Vertical loading	21.3 tonnes/m <sup>2</sup> (213 kN/m <sup>2</sup> )
Weight	7kg	Lateral loading	0.2 tonnes/m <sup>2</sup> (2 kN/m <sup>2</sup> )
Storage volume	100 litres	BSA approval	Certificate (2016/18)

**SECTION THROUGH SILT TRAP AND INFILTRATION BLANKET**