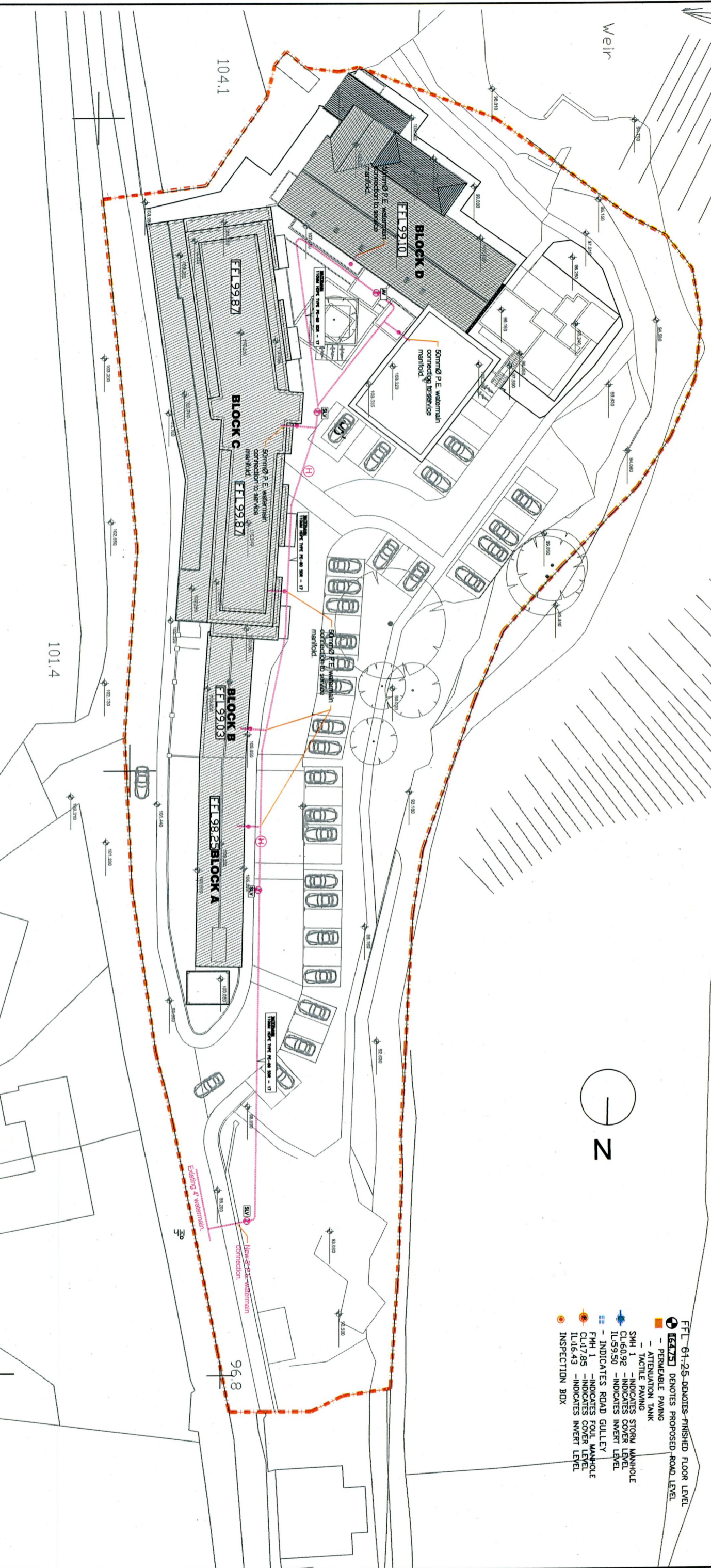
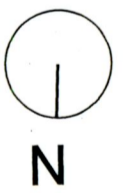


# WATERMAIN LAYOUT

- FFL 61-25 - DENOTES FINISHED FLOOR LEVEL
- CL 61-25 - DENOTES PROPOSED ROAD LEVEL
- PERMEABLE PAVING
- TACTILE PAVING
- ATTENUATION TANK
- SMH 1 - INDICATES STORM MANHOLE COVER LEVEL
- CL 60-92 - INDICATES COVER LEVEL
- IL 59-50 - INDICATES INVERT LEVEL
- INDICATES ROAD GULLEY
- FMH 1 - INDICATES FOUL MANHOLE COVER LEVEL
- CL 17-85 - INDICATES COVER LEVEL
- IL 16-43 - INDICATES INVERT LEVEL
- INSPECTION BOX



**HOUSE CONNECTION**

100mm # 100mm # PVC WATERMAIN

200mm # INTERGRADE HOUSE CONNECTION

STOPCOCK/WATER METER UNIT TYPE

**WATER METER DETAIL ON MAIN LINE**

100mm #

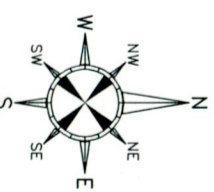
**BOUNDARY BOX**

**LEGEND:**

- SLV SLUCE VALVE
- AV AIR VALVE
- HYDRANT

NOTE: (HYDRANT TO BE IN SCREWDOWN TYPE TO BS750 WITH 2.5 INCH ROUND END AND COMPLIANCE WITH LOCAL AUTHORITY REQUIREMENTS)

BLANK END



REV/	DESCRIPTION	DATE
<p><b>CLIENT</b> BROOMHALL DEVELOPMENTS</p>		
<p><b>PROJECT</b> EDMONDSTOWN MILL RATHFARNHAM</p>		
<p><b>ORG. TITLE</b> WATERMAIN LAYOUT</p>		
DRAWN BY	DT	SCALES 1/250
CHECKED BY	SETOUT	DATE JULY 22
PROJ. NO.	22-085/105	

COPYRIGHT DT 2000