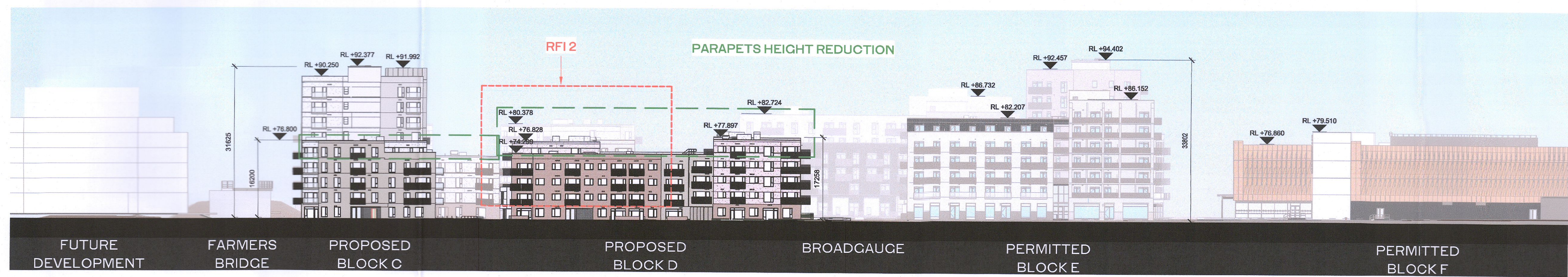
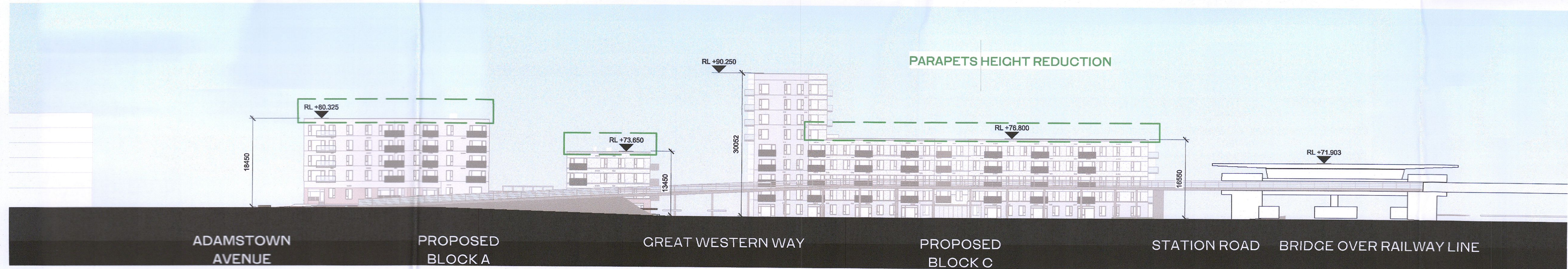


1 Site Elevation - North
1 : 500



2 Site Elevation - South
1 : 500



3 Site Elevation - West
1 : 500



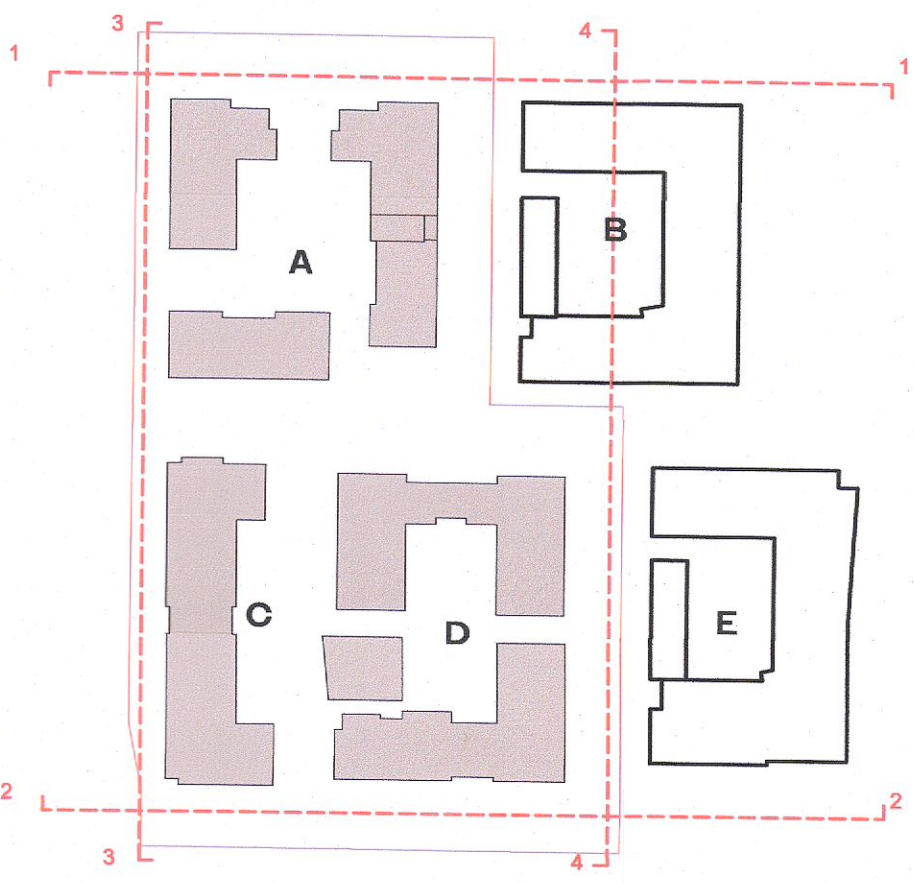
4 Site Elevation - East
1 : 500

RFI 1(a)
Block D North - Changes to Core entrance hall facing Great Western Way updated to accommodate new apartment type T.301_D revised apartment type T.102_D

RFI 1(b)
Block D South - Changes to apartment type T.201_D and T.202_D to overcome privacy/overlooking issues

RFI 2
Block D South - Changes to facade material to brick on the upper floor levels

ALL DIMENSIONS TO BE CHECKED ON SITE
NO DIMENSIONS TO BE SCALED FROM THIS DRAWING
DRAWING IS TO BE READ IN CONJUNCTION WITH RELEVANT CONSULTANTS DRAWINGS



NON RFI RELATED CHANGES

- STATUTORY CHANGES
- DESIGN CHANGES

GENERAL NOTES:

01 ALL INTERNAL APARTMENT LAYOUTS HAVE BEEN AMENDED DUE TO DESIGN DEVELOPMENT AND CO-ORDINATION WITH OTHER DISCIPLINES. THE INDIVIDUAL UNITS MAINTAIN THE SPACE REQUIREMENT GUIDELINES AS PER THE ORIGINAL PLANNING SUBMISSION

02 MINOR AMENDMENTS TO M&E AND SE LAYOUTS DUE TO DESIGN DEVELOPMENT & TO ACCOMMODATE COMPLIANCE WITH STATUTORY REQUIREMENTS

03 REDUCED PARAPET HEIGHT & FALL ARREST SYSTEM INTRODUCED TO BLOCKS A,C,D AND RESIDENT PAVILLION BUILDINGS DUE TO MAINTENANCE. PARAPET HEIGHT OF TOWER ELEMENT OF BLOCK C1 RETAINED AS PER ORIGINAL PLANNING APPLICATION

Red dash line indicates extent of amendments to address RFI 0723 dated 08 JUNE 2022

HJL Drawing Number on previously lodged planning application: SDZ22A/0005
ADC3-HJL-ACD-ZZ-DR-A-P2001 Revision (P01)

REV	DATE	DESCRIPTION	CHK	DRN
P02	06/09/2022	ISSUED FOR FURTHER INFORMATION	RJ	SEN
P01	08/04/2022	ISSUED FOR PLANNING	RJ	FM

STATUS CODE DESCRIPTION
ISSUED FOR FURTHER INFORMATION

CLIENT
QUINTAIN IRELAND LTD.

PROJECT
ADAMSTOWN STATION BLOCKS ACD

DRAWING
CONTEXTUAL ELEVATIONS

PROJECT NUMBER	DATE	STATUS CODE	DRAWING NUMBER	REVISION
950747	08/04/22	A1	ADC3-HJL-ACD-ZZ-DR-A-P2001	P02

Henry J Lyons
Architecture + Interiors
henryjlyons.com | +353 1 888 3333 | info@henryjlyons.com | 51-54 Pearse Street Dublin D02 KA68