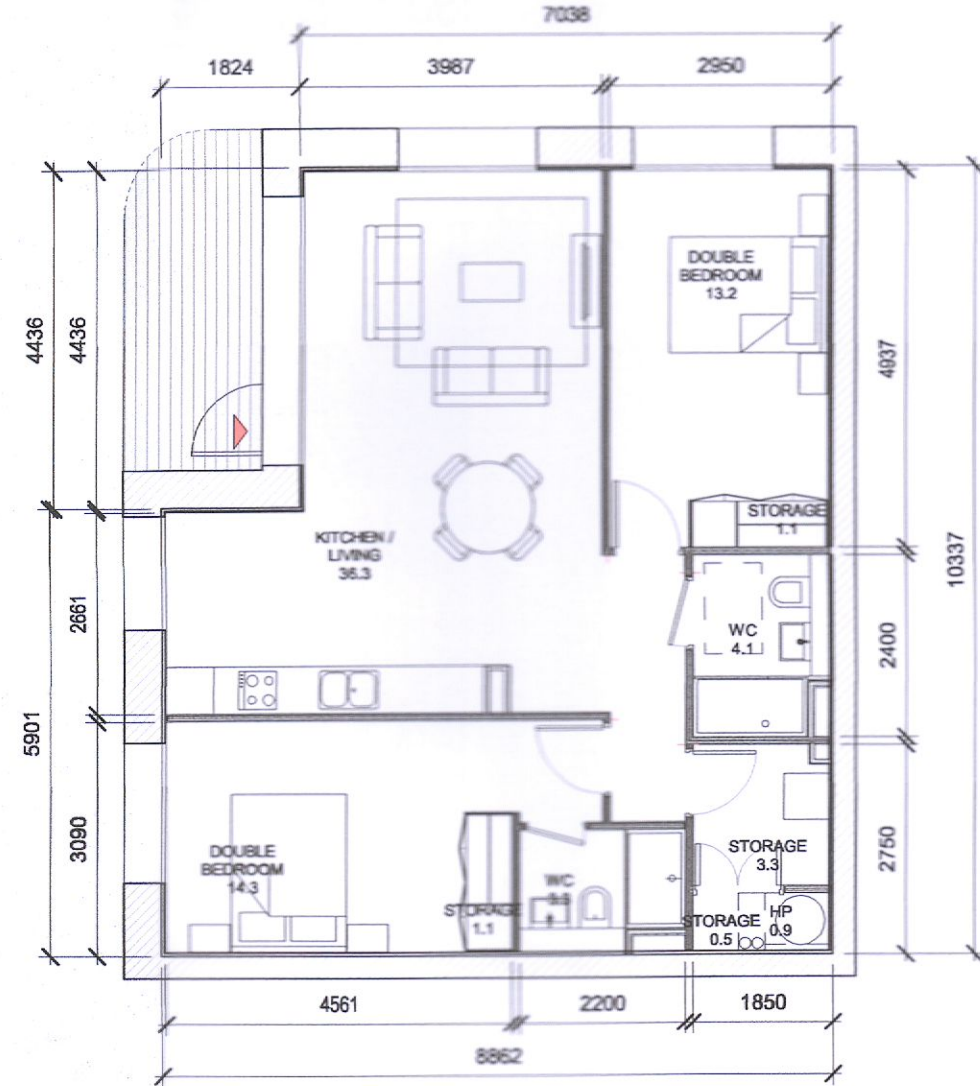


Red dash line indicates extent of amendments to address RF1 0723 dated 08 JUNE 2022

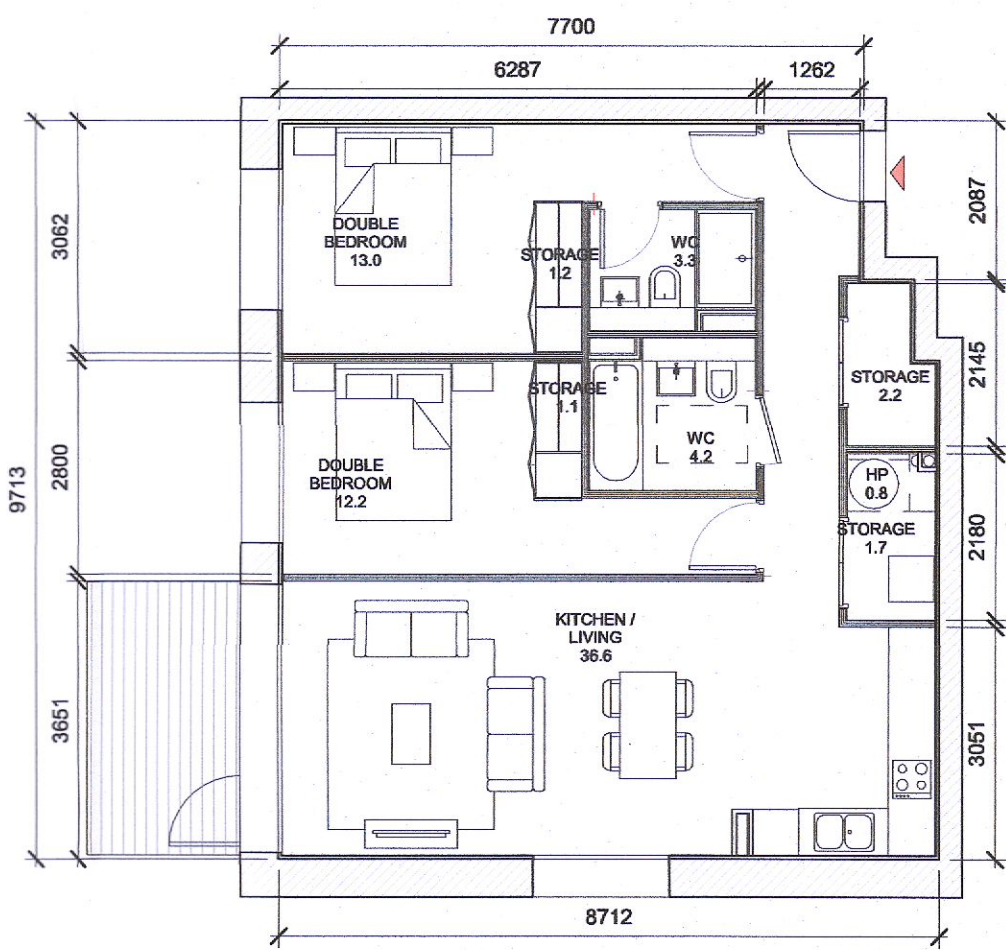
HJL Drawing Number on previously lodged planning application: SDZ22A/0005
ADC3-HJL-ACD-ZZ-DR-A-P8005 Revision (P01)



1 T.207 D
1:100

T.207_D SPACE REQUIREMENTS

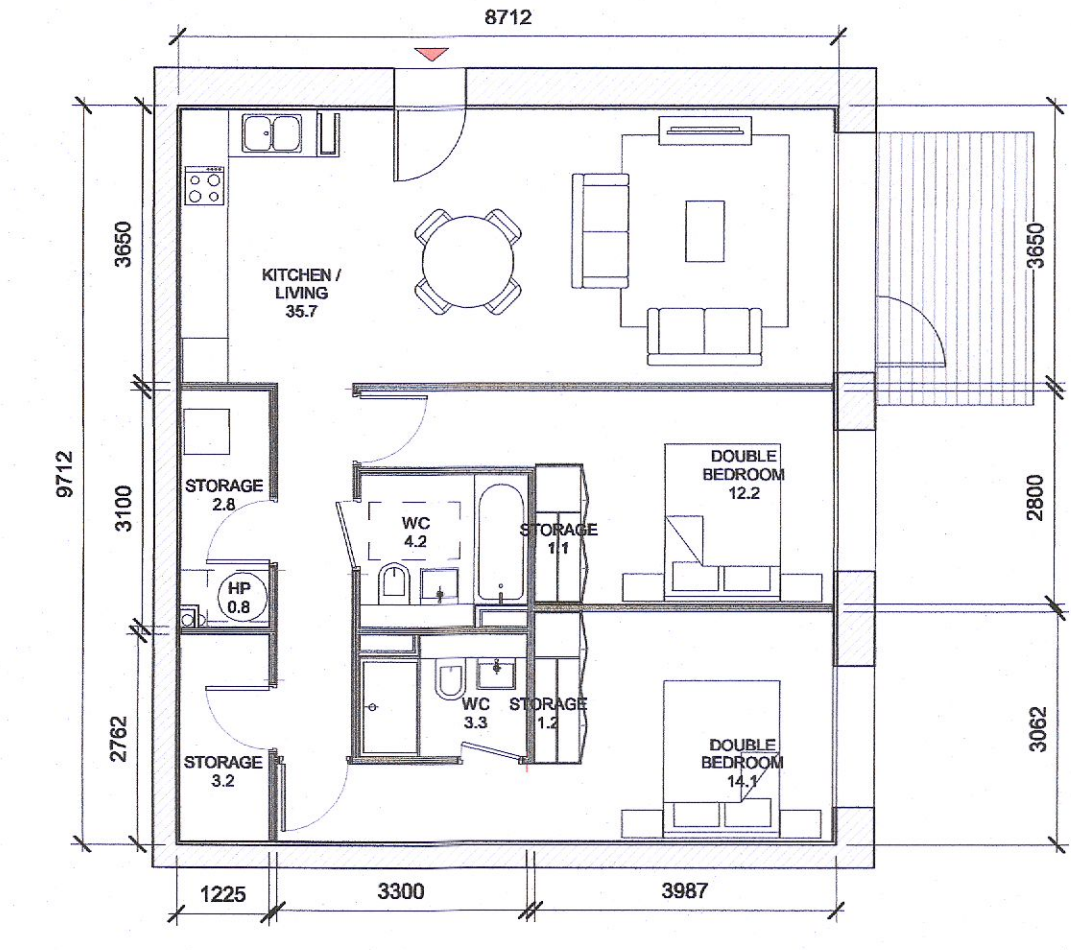
Apartment Area	Required Apartment Area	Required Area Met	Kitchen - Living Area	Required Kitchen - Living Area	Total Bedroom Area	Required Total Bedroom Area	Total Storage Area	Required Total Storage Area	Heat Pump Area
81.6 m²	73.0 m²	Yes	35.3 m²	30.0 m²	27.5 m²	24.4 m²	6.0 m²	6.0 m²	Yes 0.9 m²



2 T.208 D
1:100

T.208_D SPACE REQUIREMENTS

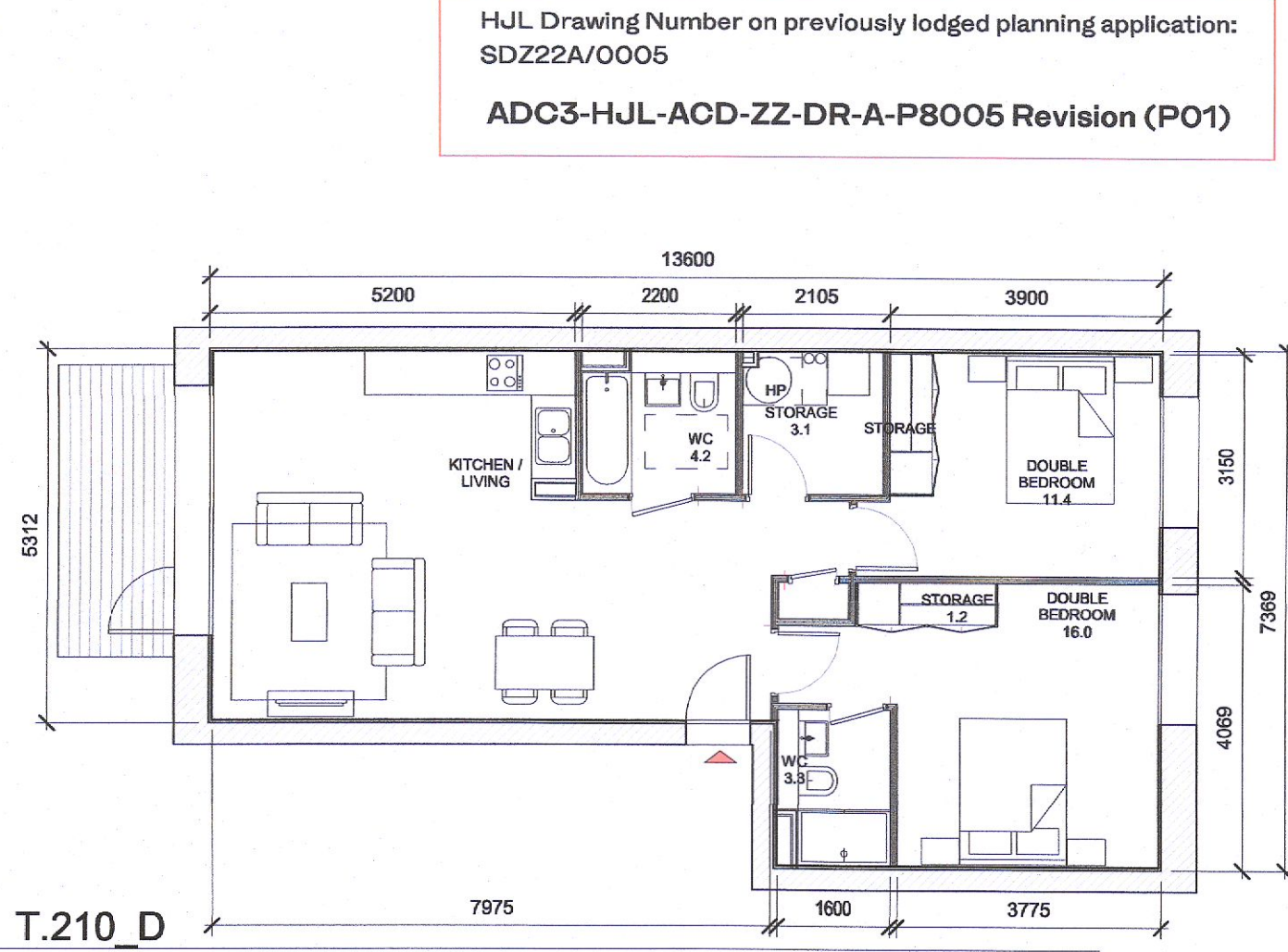
Apartment Area	Required Apartment Area	Required Area Met	Kitchen - Living Area	Required Kitchen - Living Area	Total Bedroom Area	Required Total Bedroom Area	Total Storage Area	Required Total Storage Area	Heat Pump Area
80.3 m²	73.0 m²	Yes	35.8 m²	30.0 m²	25.2 m²	24.4 m²	6.2 m²	6.0 m²	Yes 0.9 m²



3 T.209 D
1:100

T.209_D SPACE REQUIREMENTS

Apartment Area	Required Apartment Area	Required Area Met	Kitchen - Living Area	Required Kitchen - Living Area	Total Bedroom Area	Required Total Bedroom Area	Total Storage Area	Required Total Storage Area	Heat Pump Area
82.8 m²	73.0 m²	Yes	35.7 m²	30.0 m²	26.3 m²	24.4 m²	6.3 m²	6.0 m²	Yes 0.9 m²



4 T.210 D
1:100

T.210_D SPACE REQUIREMENTS

Apartment Area	Required Apartment Area	Required Area Met	Kitchen - Living Area	Required Kitchen - Living Area	Total Bedroom Area	Required Total Bedroom Area	Total Storage Area	Required Total Storage Area	Heat Pump Area
81.5 m²	73.0 m²	Yes	36.6 m²	30.0 m²	27.4 m²	24.4 m²	6.0 m²	6.0 m²	Yes 0.9 m²

APARTMENT TYPES 2B

Count	Apartment Type	Location	Block	Area sqm	Min. Area
4	2B-3P	T.201_C	C	70.8	63.0
8	2B-3P	T.201_D	D	65.7	63.0
1	2B-3P	T.202_C	C	63.2	63.0
2	2B-3P	T.202_D	D	68.2	63.0
1	2B-3P	T.203_D	D	71.9	63.0
2B-3P: 16					
2	2B-4P	T.201_A	A	73.2	73.0
4	2B-4P	T.202_A	A	74.0	73.0
4	2B-4P	T.203_A	A	73.8	73.0
13	2B-4P	T.203_C	C	75.8	73.0
8	2B-4P	T.204_A	A	73.7	73.0
16	2B-4P	T.204_C	C	73.8	73.0
16	2B-4P	T.204_D	D	73.6	73.0
8	2B-4P	T.204_D	D	74.3	73.0
8	2B-4P	T.205_A	A	81.2	73.0
4	2B-4P	T.205_C	C	75.4	73.0
4	2B-4P	T.205_D	D	76.7	73.0
27	2B-4P	T.206_A	A	75.9	73.0
1	2B-4P	T.206_C	C	73.3	73.0
6	2B-4P	T.206_D	D	80.7	73.0
9	2B-4P	T.207_A	A	74.9	73.0
16	2B-4P	T.207_C	C	73.3	73.0
1	2B-4P	T.207_D	D	81.6	73.0
2	2B-4P	T.208_A	A	77.2	73.0
5	2B-4P	T.208_C	C	73.6	73.0
16	2B-4P	T.208_D	D	80.3	73.0
2	2B-4P	T.209_A	A	73.4	73.0
4	2B-4P	T.209_D	D	82.8	73.0
2	2B-4P	T.210_A	A	76.0	73.0
3	2B-4P	T.210_D	D	81.5	73.0
1	2B-4P	T.211_D	D	78.8	73.0
3	2B-4P	T.212_D	D	76.9	73.0
3	2B-4P	T.213_D	D	74.0	73.0
2	2B-4P	T.214_D	D	83.3	73.0
1	2B-4P	T.215_D	D	76.3	73.0
1	2B-4P	T.216_D	D	75.7	73.0
1	2B-4P	T.217_D	D	85.2	73.0
3	2B-4P	T.218_D	D	82.4	73.0
2B-4P: 195					
Grand total: 211					

NON RF1 RELATED CHANGES

STATUTORY CHANGES

DESIGN CHANGES

GENERAL NOTES:

O1 ALL INTERNAL APARTMENT LAYOUTS HAVE BEEN AMENDED TO DESIGN DEVELOPMENT AND CO-ORDINATION WITH OTHER DISCIPLINES. THE INDIVIDUAL UNITS MAINTAIN THE SPACE REQUIREMENT GUIDELINES AS PER THE ORIGINAL PLANNING SUBMISSION

O2 MINOR AMENDMENTS TO M&E AND SE LAYOUTS DUE TO DESIGN DEVELOPMENT & TO ACCOMMODATE COMPLIANCE WITH STATUTORY REQUIREMENTS

O3 REDUCED PARAPET HEIGHT & FALL ARREST SYSTEM INTRODUCED TO BLOCKS A,C,D AND RESIDENT PAVILION BUILDINGS DUE TO MAINTENANCE. PARAPET HEIGHT OF TOWER ELEMENT OF BLOCK C1 RETAINED AS PER ORIGINAL PLANNING APPLICATION

P02	06/09/2022	ISSUED FOR FURTHER INFORMATION	RJ	SEN
P01	06/04/2022	ISSUED FOR PLANNING	RJ	FM
REV	DATE	DESCRIPTION	CHK	DRN

STATUS CODE DESCRIPTION

ISSUED FOR FURTHER INFORMATION

CLIENT

QUINTAIN IRELAND LTD.

PROJECT

ADAMSTOWN STATION BLOCKS ACD

DRAWING

APARTMENT TYPES Sheet 5
2B Apartments

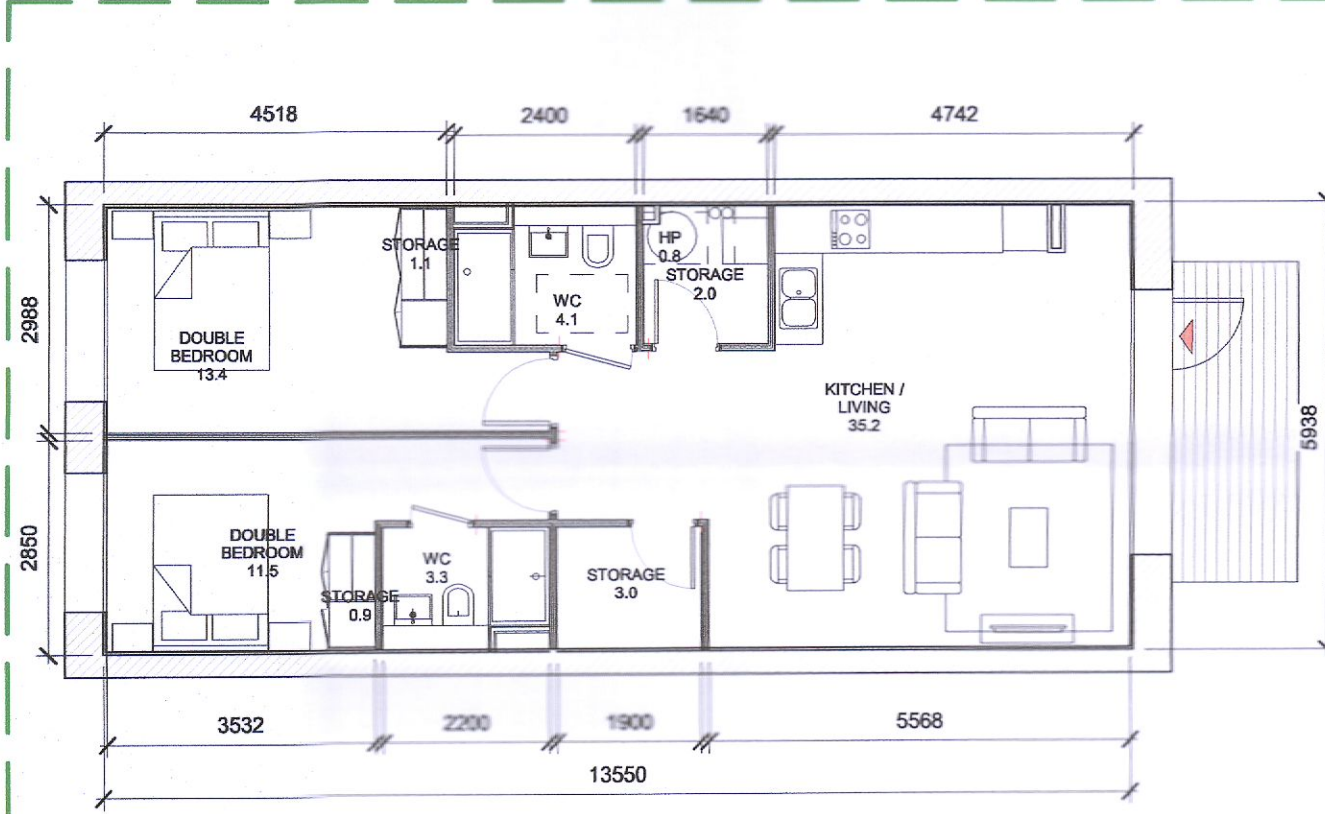
PROJECT NUMBER 850747 DATE 08/04/22

SCALE@ A1: As Indicated DRAWN/CHECKED: SEN/RJ

STATUS CODE: A1 DRAWING NUMBER: ADC3-HJL-ACD-ZZ-DR-A-P8005 REVISION: P02

Henry J Lyons

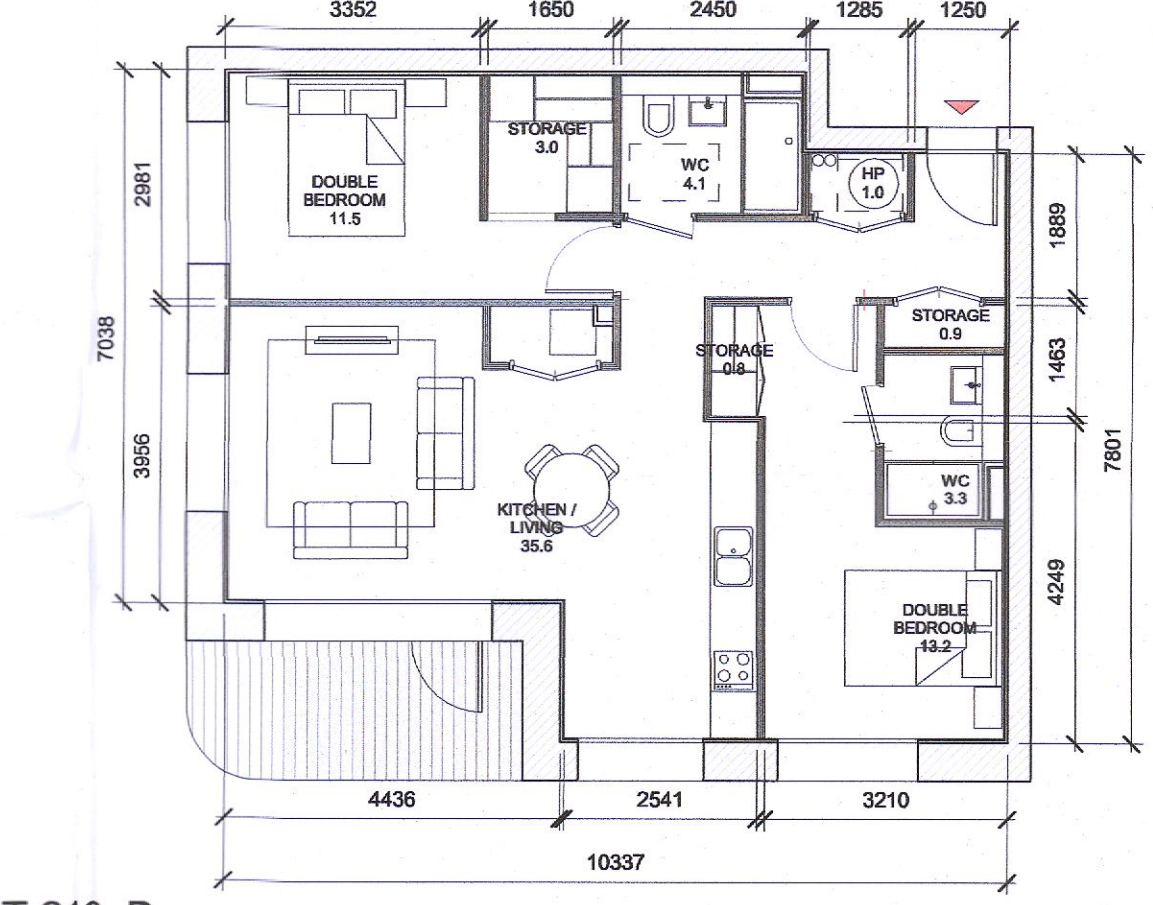
Architecture + Interiors
henryjlyons.com +353 1 888 3333 info@henryjlyons.com 51-54 Pearse Street Dublin D02 K466



5 T.211 D
1:100

T.211_D SPACE REQUIREMENTS

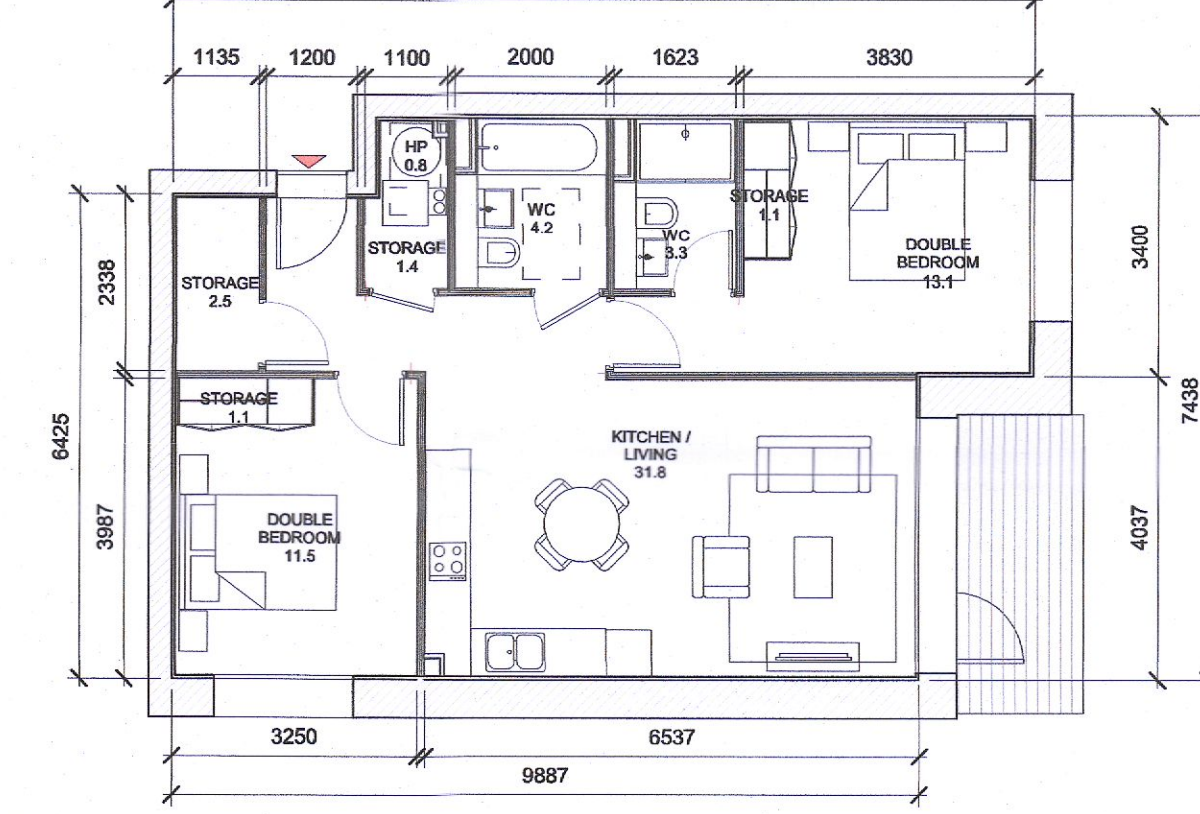
Apartment Area	Required Apartment Area	Required Area Met	Kitchen - Living Area	Required Kitchen - Living Area	Total Bedroom Area	Required Total Bedroom Area	Total Storage Area	Required Total Storage Area	Heat Pump Area
78.8 m²	73.0 m²	Yes	35.2 m²	30.0 m²	24.9 m²	24.4 m²	7.0 m²	6.0 m²	Yes 0.9 m²



6 T.212 D
1:100

T.212_D SPACE REQUIREMENTS

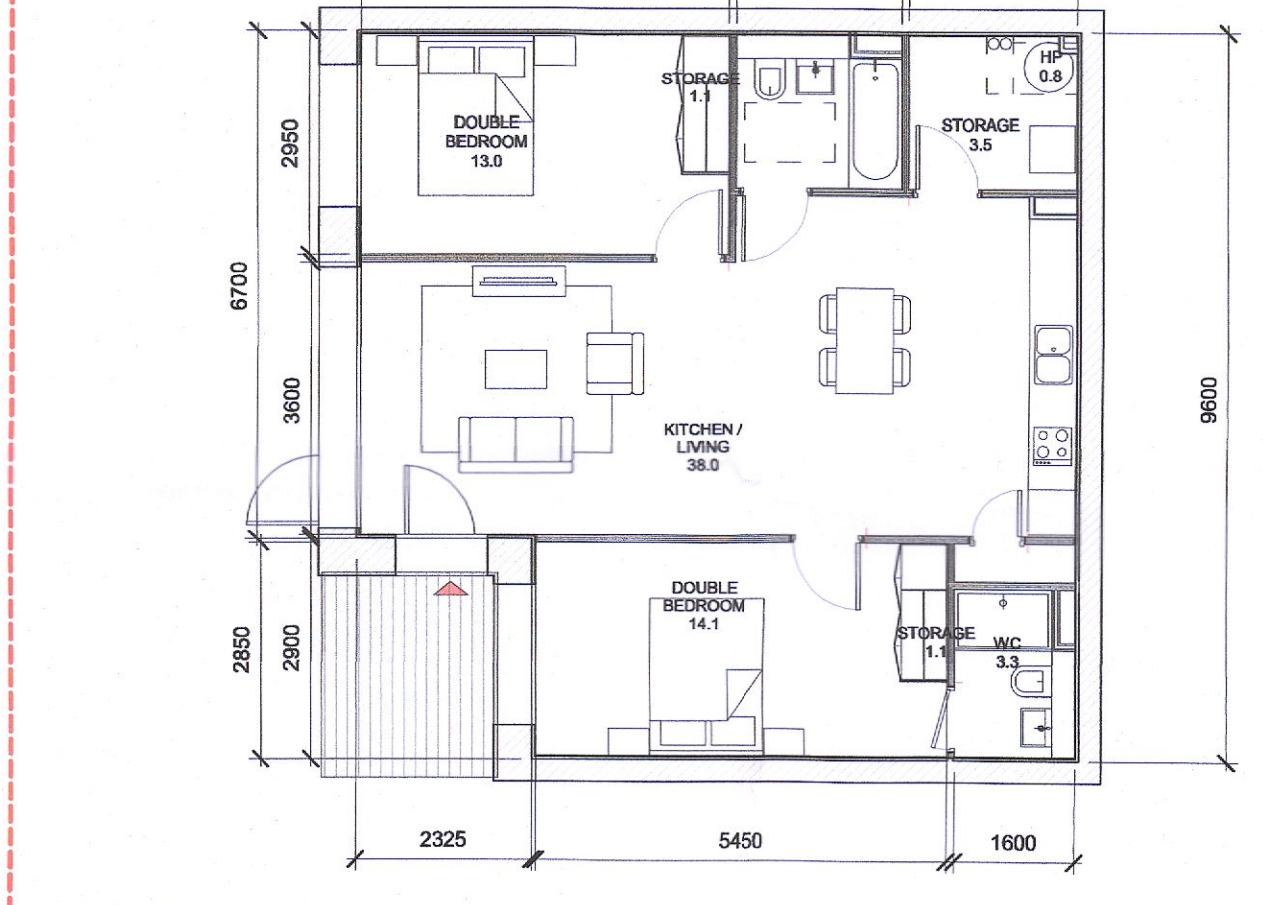
Apartment Area	Required Apartment Area	Required Area Met	Kitchen - Living Area	Required Kitchen - Living Area	Total Bedroom Area	Required Total Bedroom Area	Total Storage Area	Required Total Storage Area	Heat Pump Area
78.9 m²	73.0 m²	Yes	35.6 m²	30.0 m²	24.7 m²	24.4 m²	6.0 m²	6.0 m²	Yes 1.0 m²



7 T.213 D
1:100

T.213_D SPACE REQUIREMENTS

Apartment Area	Required Apartment Area	Required Area Met	Kitchen - Living Area	Required Kitchen - Living Area	Total Bedroom Area	Required Total Bedroom Area	Total Storage Area	Required Total Storage Area	Heat Pump Area
74.0 m²	73.0 m²	Yes	31.8 m²	30.0 m²	24.6 m²	24.4 m²	6.1 m²	6.0 m²	Yes 0.9 m²



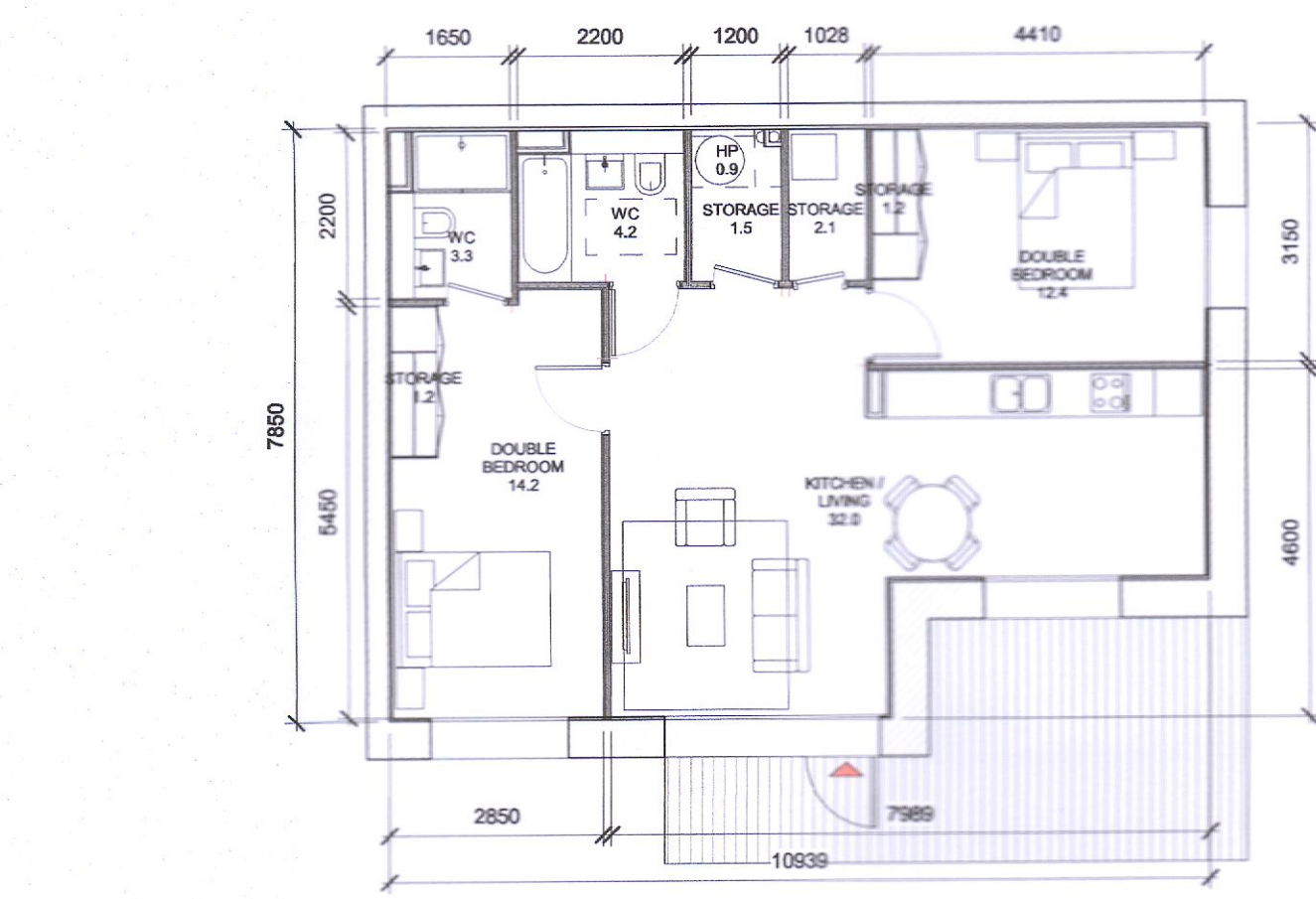
8 T.214 D
1:100

T.214_D SPACE REQUIREMENTS

Apartment Area	Required Apartment Area	Required Area Met	Kitchen - Living Area	Required Kitchen - Living Area	Total Bedroom Area	Required Total Bedroom Area	Total Storage Area	Required Total Storage Area	Heat Pump Area
83.3 m²	73.0 m²	Yes	38.0 m²	30.0 m²	27.1 m²	24.4 m²	6.5 m²	6.0 m²	Yes 0.9 m²

UPDATED TYPE

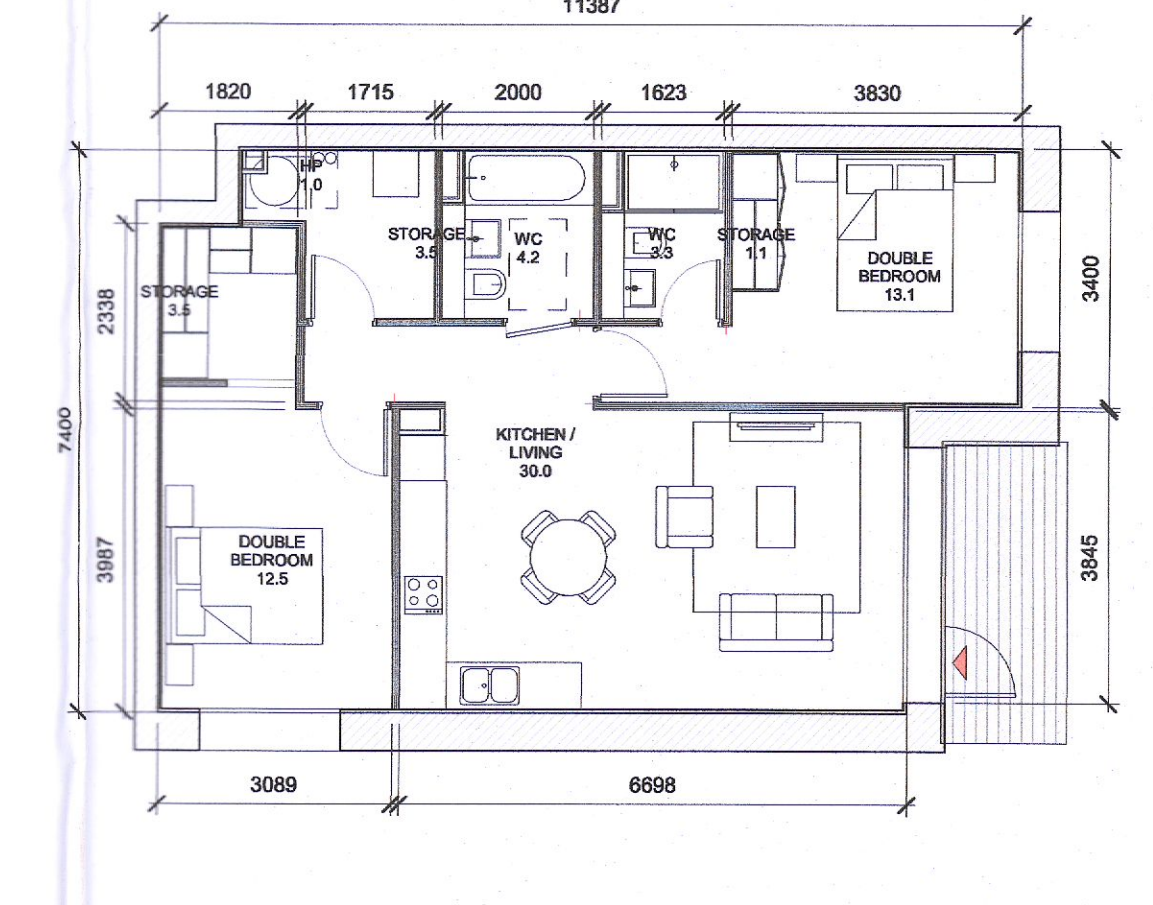
NEW TYPE AS PER FSC COMPLIANCE



9 T.215 D
1:100

T.215_D SPACE REQUIREMENTS

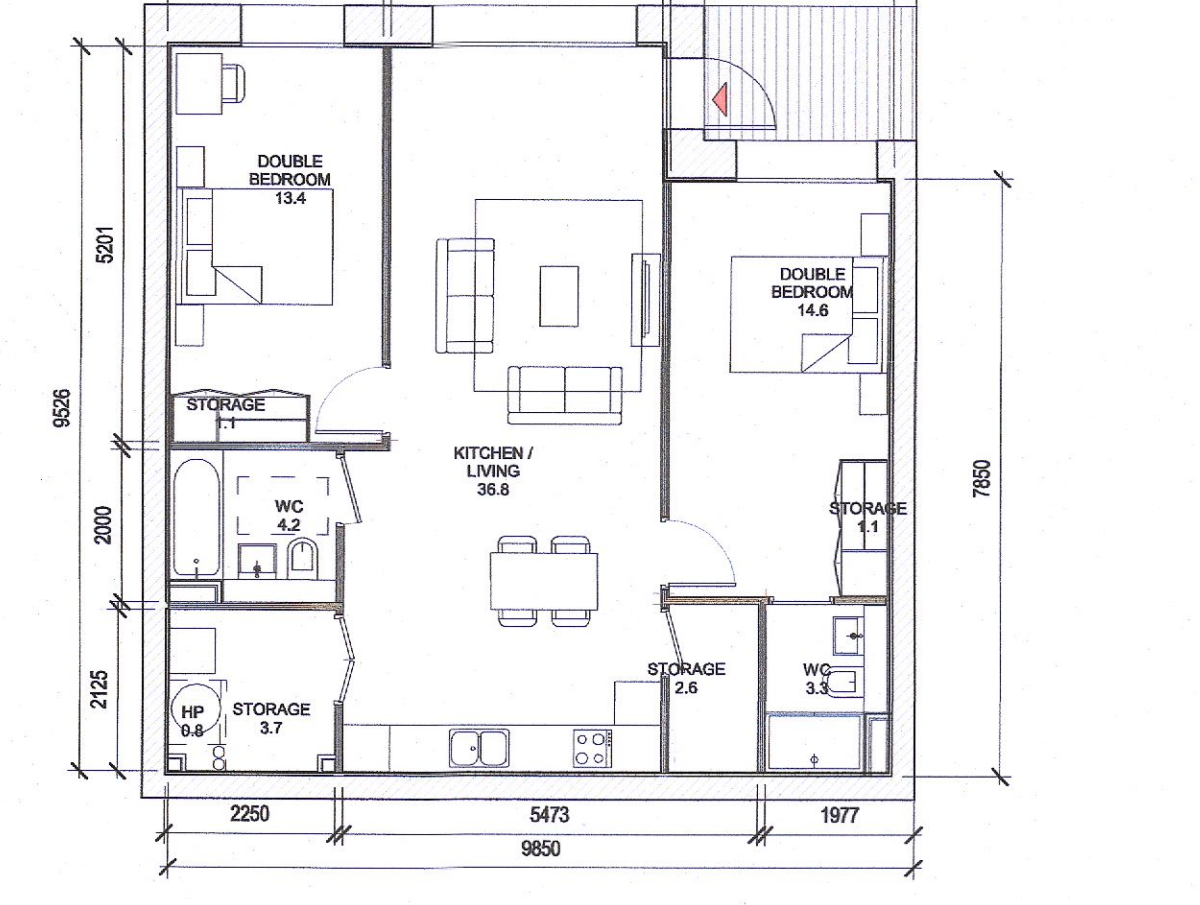
Apartment Area	Required Apartment Area	Required Area Met	Kitchen - Living Area	Required Kitchen - Living Area	Total Bedroom Area	Required Total Bedroom Area	Total Storage Area	Required Total Storage Area	Heat Pump Area
76.3 m²	73.0 m²	Yes	32.0 m²	30.0 m²	25.6 m²	24.4 m²	6.0 m²	6.0 m²	Yes 0.9 m²



10 T.216 D
1:100

T.216_D SPACE REQUIREMENTS

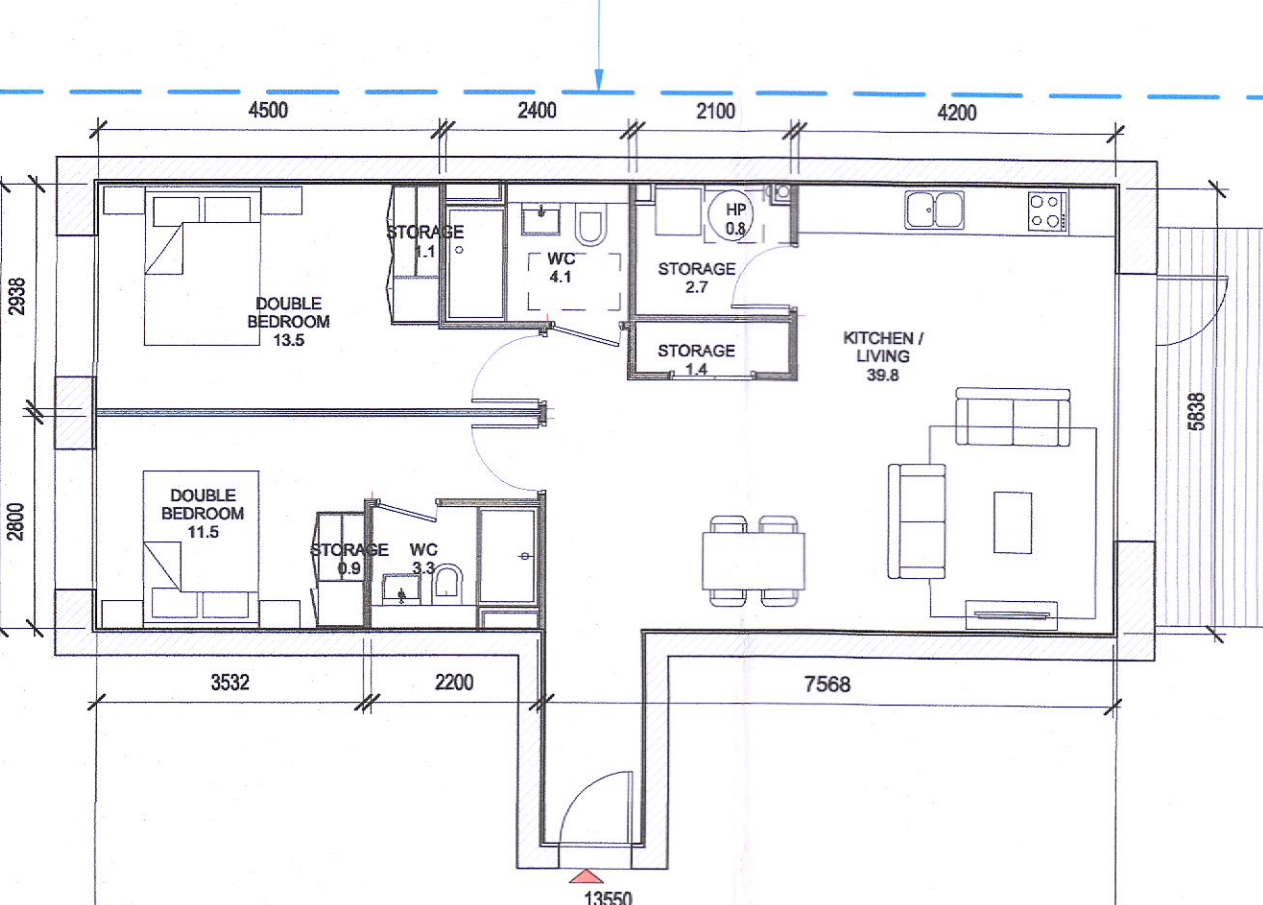
Apartment Area	Required Apartment Area	Required Area Met	Kitchen - Living Area	Required Kitchen - Living Area	Total Bedroom Area	Required Total Bedroom Area	Total Storage Area	Required Total Storage Area	Heat Pump Area
75.7 m²	73.0 m²	Yes	30.0 m²	30.0 m²	25.5 m²	24.4 m²	6.1 m²	6.0 m²	Yes 1.1 m²



11 T.217 D
1:100

T.217_D SPACE REQUIREMENTS

Apartment Area	Required Apartment Area	Required Area Met	Kitchen - Living Area	Required Kitchen - Living Area	Total Bedroom Area	Required Total Bedroom Area	Total Storage Area	Required Total Storage Area	Heat Pump Area
85.2 m²	73.0 m²	Yes	36.6 m²	30.0 m²	28.1 m²	24.4 m²	8.5 m²	6.0 m²	Yes 0.3 m²



12 T.218 D
1:100

T.218_D SPACE REQUIREMENTS

Apartment Area	Required Apartment Area	Required Area Met	Kitchen - Living Area	Required Kitchen - Living Area	Total Bedroom Area	Required Total Bedroom Area	Total Storage Area	Required Total Storage Area	Heat Pump Area
82.4 m²	73.0 m²	Yes	40.0 m²	30.0 m²	25.0 m²	24.4 m²	Yes 6.0 m²	6.0 m²	Yes 0.9 m²