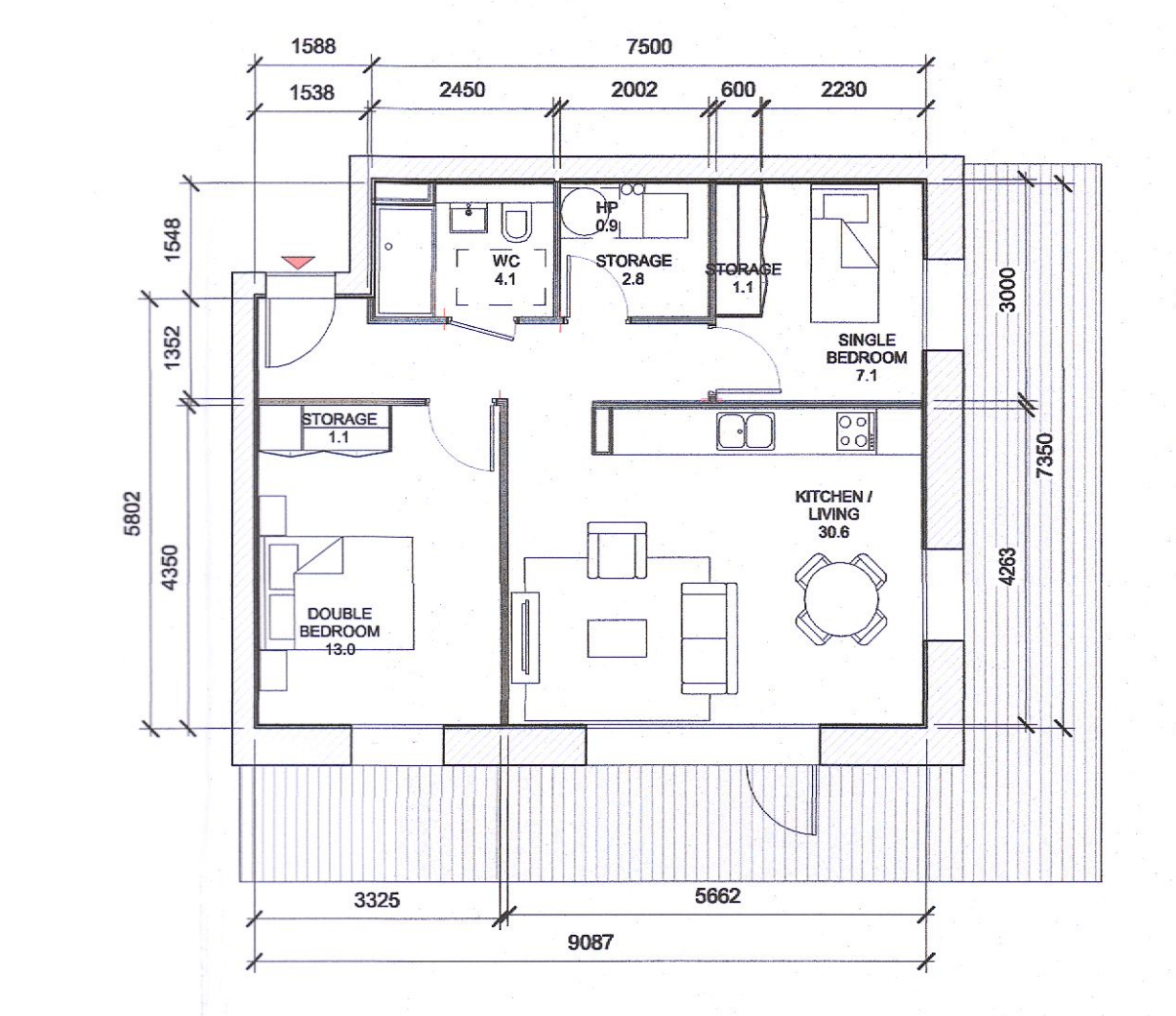


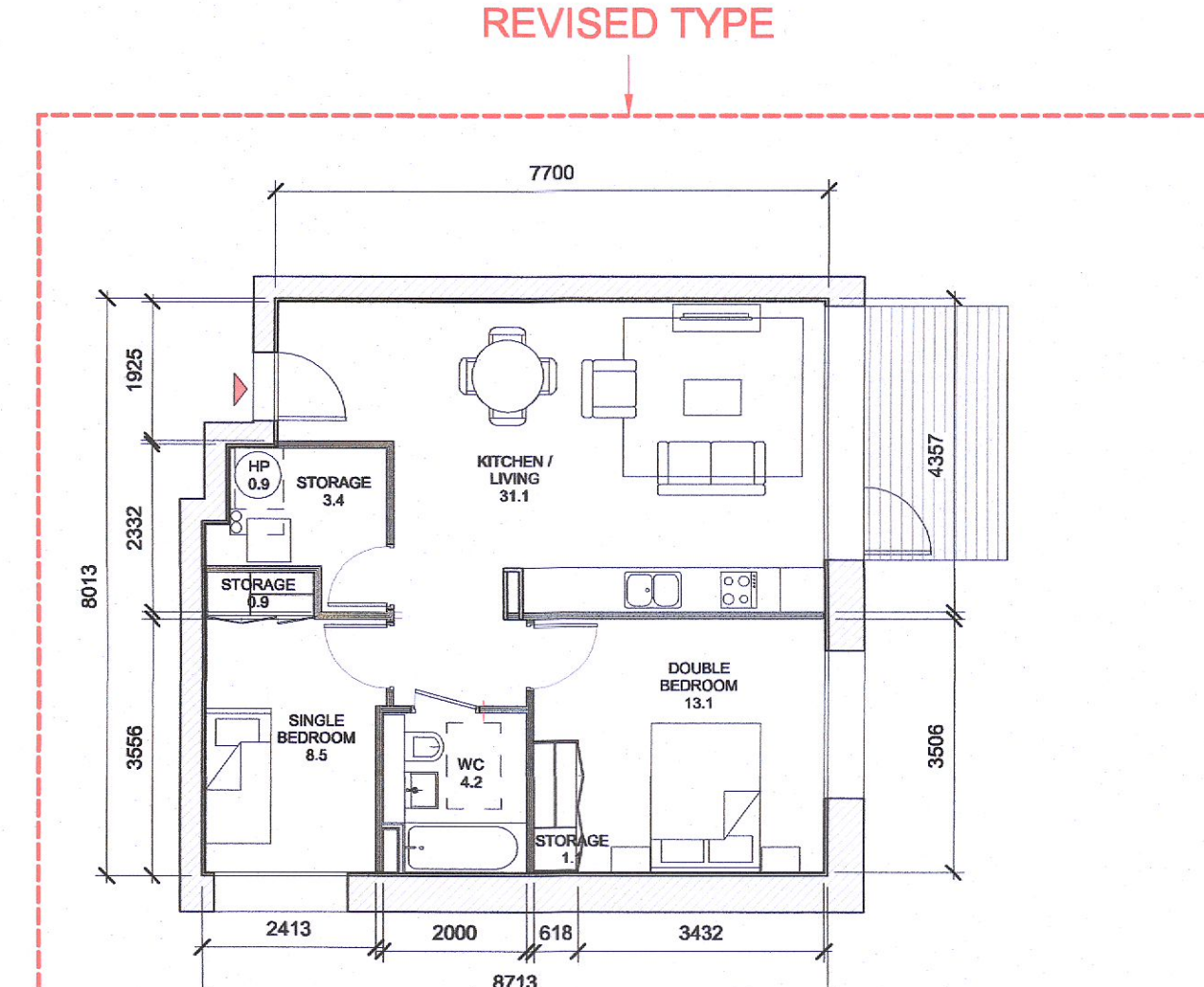
1 T.201 C  
1:100

T.201_C SPACE REQUIREMENTS												
Apartment Area	Required Apartment Area	Required Area Met	Kitchen - Living Area	Required Kitchen - Living Area	Required Area Met	Total Bedroom Area	Required Total Bedroom Area	Required Area Met	Total Storage Area	Required Total Storage Area	Heat Pump Area	
70.6 m <sup>2</sup>	63.0 m <sup>2</sup>	Yes	33.0 m <sup>2</sup>	28.0 m <sup>2</sup>	Yes	21.8 m <sup>2</sup>	20.1 m <sup>2</sup>	Yes	6.5 m <sup>2</sup>	5.0 m <sup>2</sup>	Yes	1.1 m <sup>2</sup>



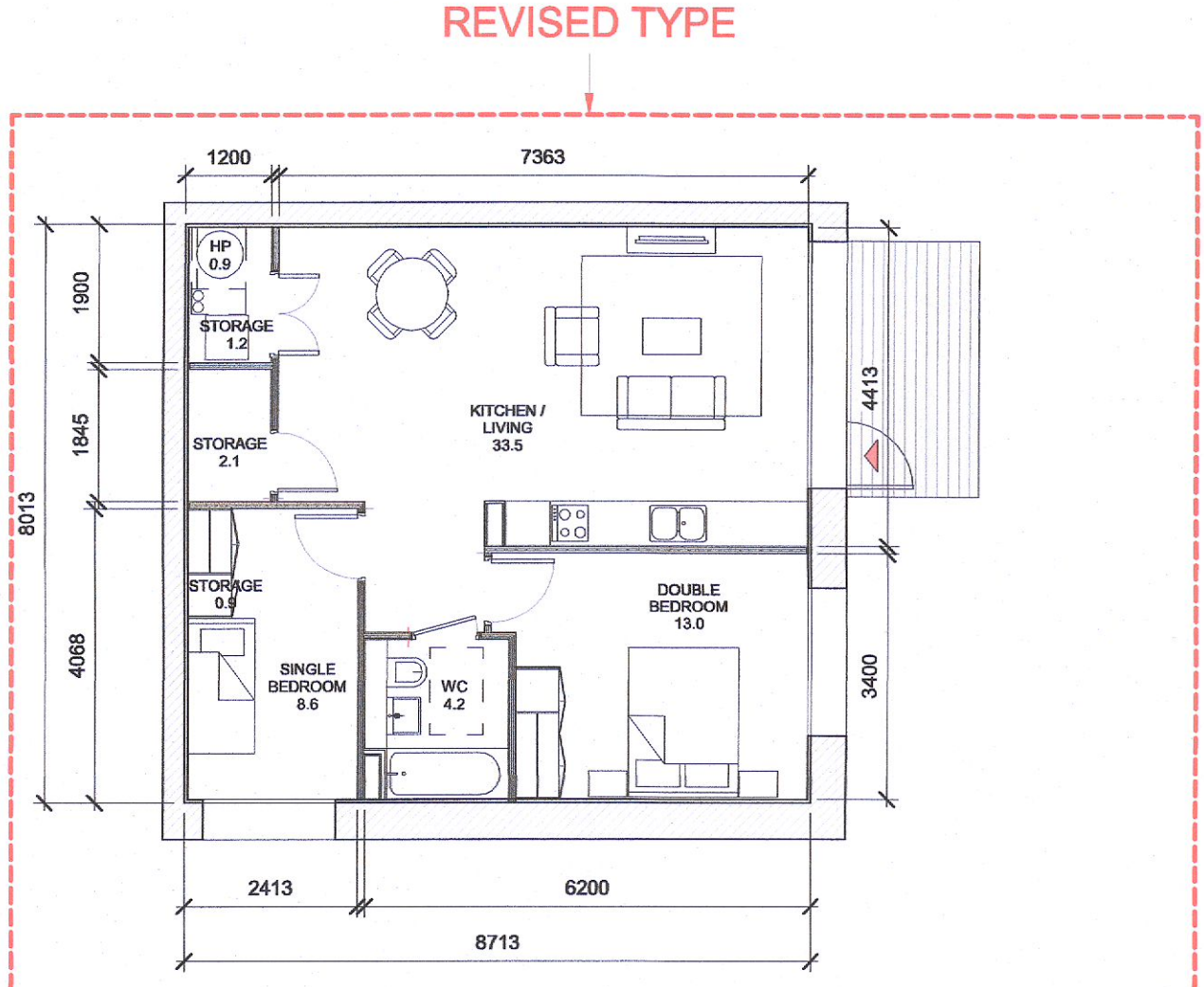
2 T.202 C  
1:100

T.202_C SPACE REQUIREMENTS												
Apartment Area	Required Apartment Area	Required Area Met	Kitchen - Living Area	Required Kitchen - Living Area	Required Area Met	Total Bedroom Area	Required Total Bedroom Area	Required Area Met	Total Storage Area	Required Total Storage Area	Heat Pump Area	
63.2 m <sup>2</sup>	63.0 m <sup>2</sup>	Yes	30.6 m <sup>2</sup>	28.0 m <sup>2</sup>	Yes	20.1 m <sup>2</sup>	20.1 m <sup>2</sup>	Yes	5.0 m <sup>2</sup>	5.0 m <sup>2</sup>	Yes	0.9 m <sup>2</sup>



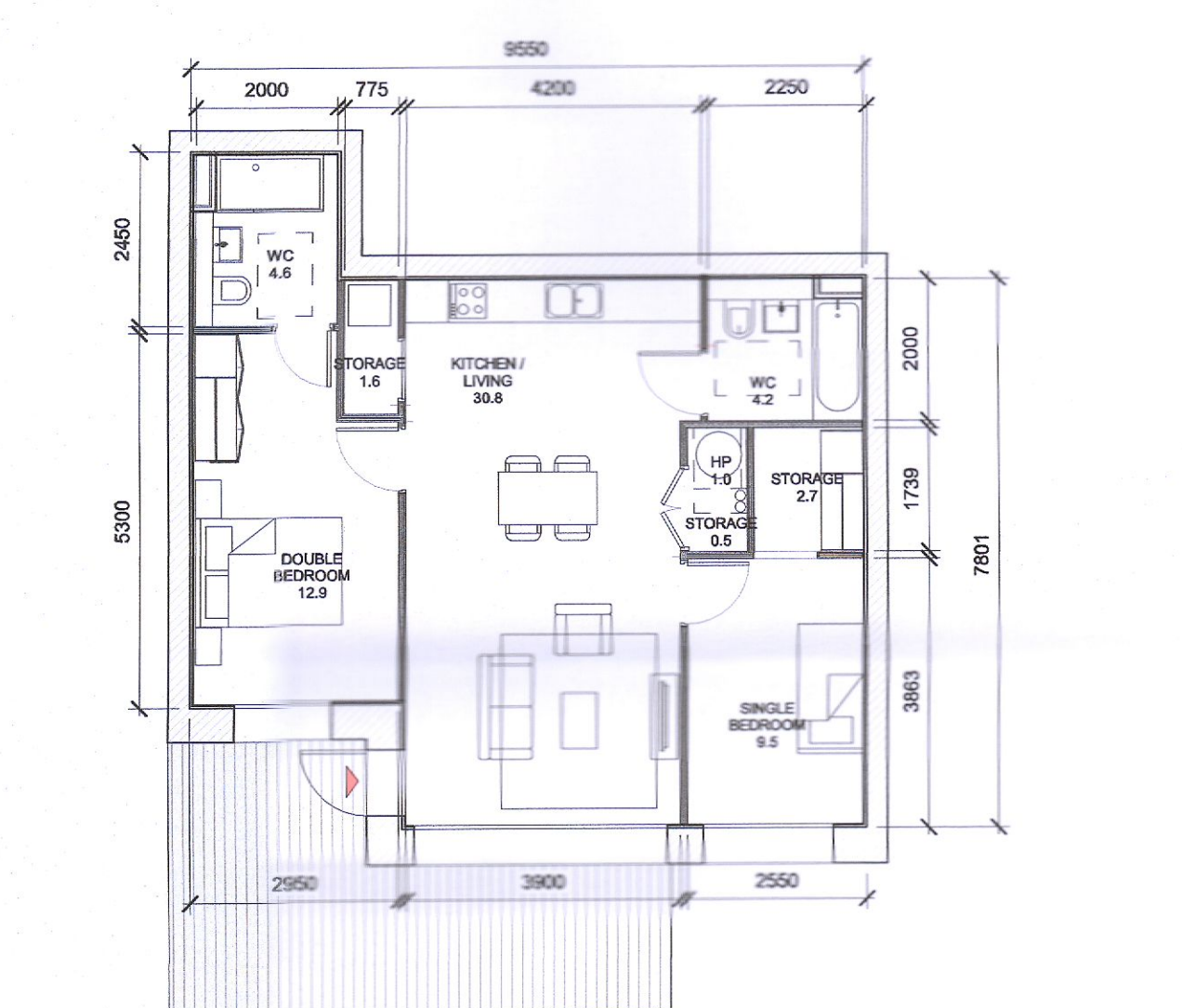
3 T.201 D  
1:100

T.201_D SPACE REQUIREMENTS												
Apartment Area	Required Apartment Area	Required Area Met	Kitchen - Living Area	Required Kitchen - Living Area	Required Area Met	Total Bedroom Area	Required Total Bedroom Area	Required Area Met	Total Storage Area	Required Total Storage Area	Heat Pump Area	
65.7 m <sup>2</sup>	63.0 m <sup>2</sup>	Yes	31.1 m <sup>2</sup>	28.0 m <sup>2</sup>	Yes	21.6 m <sup>2</sup>	20.1 m <sup>2</sup>	Yes	5.4 m <sup>2</sup>	5.0 m <sup>2</sup>	Yes	0.9 m <sup>2</sup>



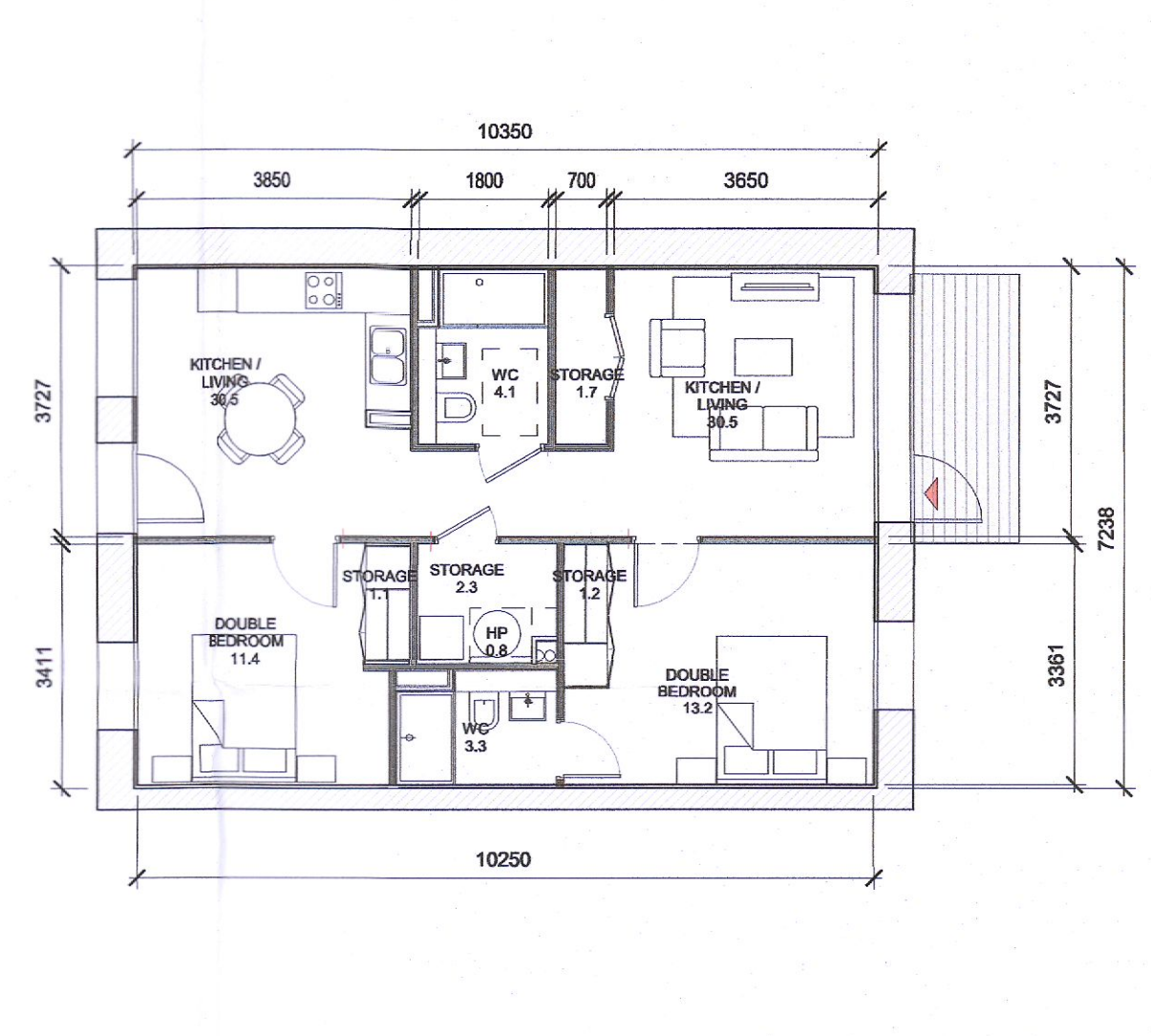
4 T.202 D  
1:100

T.202_D SPACE REQUIREMENTS												
Apartment Area	Required Apartment Area	Required Area Met	Kitchen - Living Area	Required Kitchen - Living Area	Required Area Met	Total Bedroom Area	Required Total Bedroom Area	Required Area Met	Total Storage Area	Required Total Storage Area	Heat Pump Area	
68.2 m <sup>2</sup>	63.0 m <sup>2</sup>	Yes	33.5 m <sup>2</sup>	28.0 m <sup>2</sup>	Yes	21.5 m <sup>2</sup>	20.1 m <sup>2</sup>	Yes	5.3 m <sup>2</sup>	5.0 m <sup>2</sup>	Yes	0.5 m <sup>2</sup>



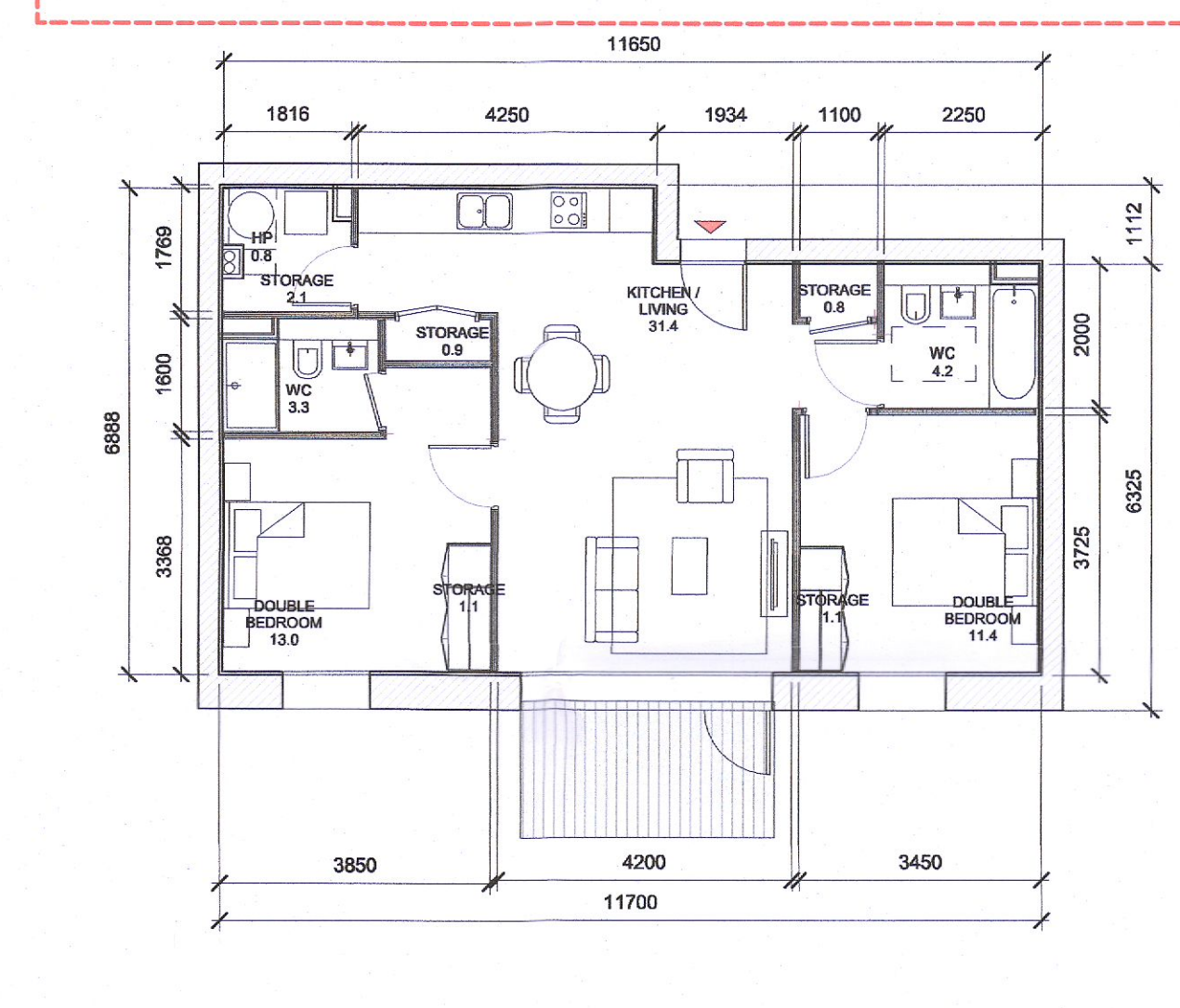
5 T.203 D  
1:100

T.203_D SPACE REQUIREMENTS												
Apartment Area	Required Apartment Area	Required Area Met	Kitchen - Living Area	Required Kitchen - Living Area	Required Area Met	Total Bedroom Area	Required Total Bedroom Area	Required Area Met	Total Storage Area	Required Total Storage Area	Heat Pump Area	
71.9 m <sup>2</sup>	63.0 m <sup>2</sup>	Yes	30.8 m <sup>2</sup>	28.0 m <sup>2</sup>	Yes	22.5 m <sup>2</sup>	20.1 m <sup>2</sup>	Yes	5.9 m <sup>2</sup>	5.0 m <sup>2</sup>	Yes	1.0 m <sup>2</sup>



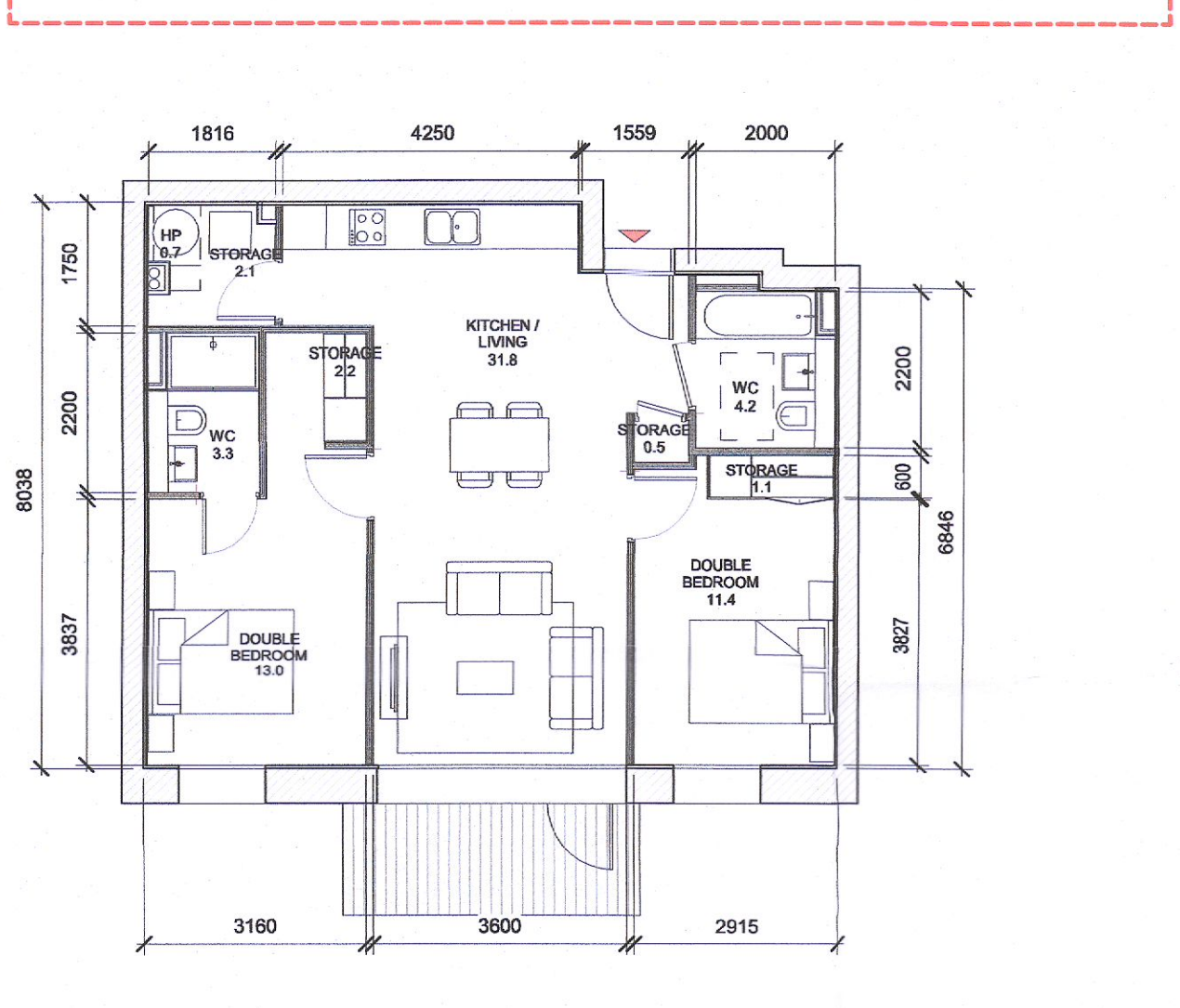
6 T.201 A  
1:100

T.201_A SPACE REQUIREMENTS												
Apartment Area	Required Apartment Area	Required Area Met	Kitchen - Living Area	Required Kitchen - Living Area	Required Area Met	Total Bedroom Area	Required Total Bedroom Area	Required Area Met	Total Storage Area	Required Total Storage Area	Heat Pump Area	
73.2 m <sup>2</sup>	73.0 m <sup>2</sup>	Yes	30.7 m <sup>2</sup>	30.0 m <sup>2</sup>	Yes	24.6 m <sup>2</sup>	24.4 m <sup>2</sup>	Yes	6.3 m <sup>2</sup>	6.0 m <sup>2</sup>	Yes	0.9 m <sup>2</sup>



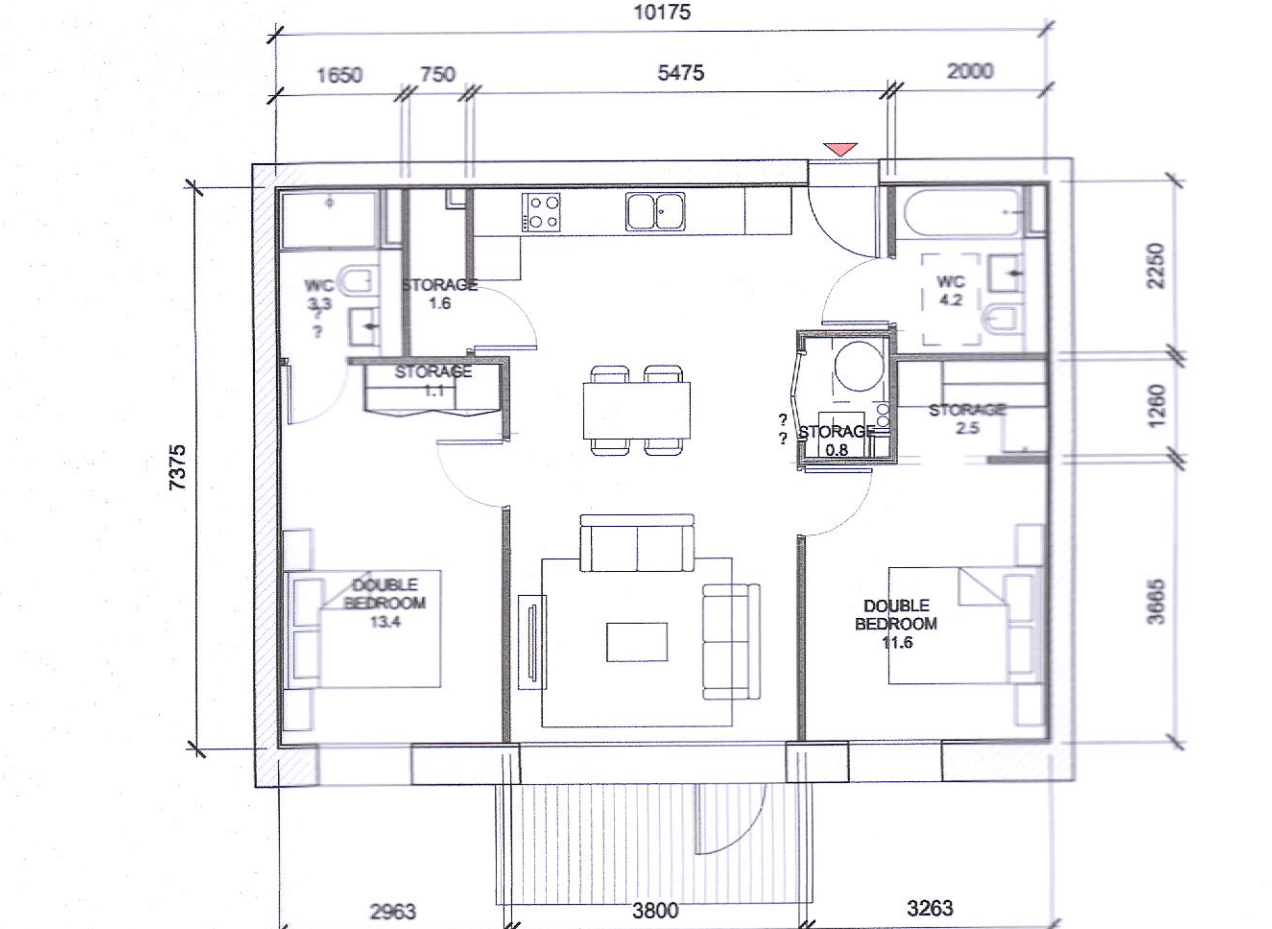
7 T.202 A  
1:100

T.202_A SPACE REQUIREMENTS												
Apartment Area	Required Apartment Area	Required Area Met	Kitchen - Living Area	Required Kitchen - Living Area	Required Area Met	Total Bedroom Area	Required Total Bedroom Area	Required Area Met	Total Storage Area	Required Total Storage Area	Heat Pump Area	
74.0 m <sup>2</sup>	73.0 m <sup>2</sup>	Yes	31.4 m <sup>2</sup>	30.0 m <sup>2</sup>	Yes	24.4 m <sup>2</sup>	24.4 m <sup>2</sup>	Yes	6.0 m <sup>2</sup>	6.0 m <sup>2</sup>	Yes	0.9 m <sup>2</sup>



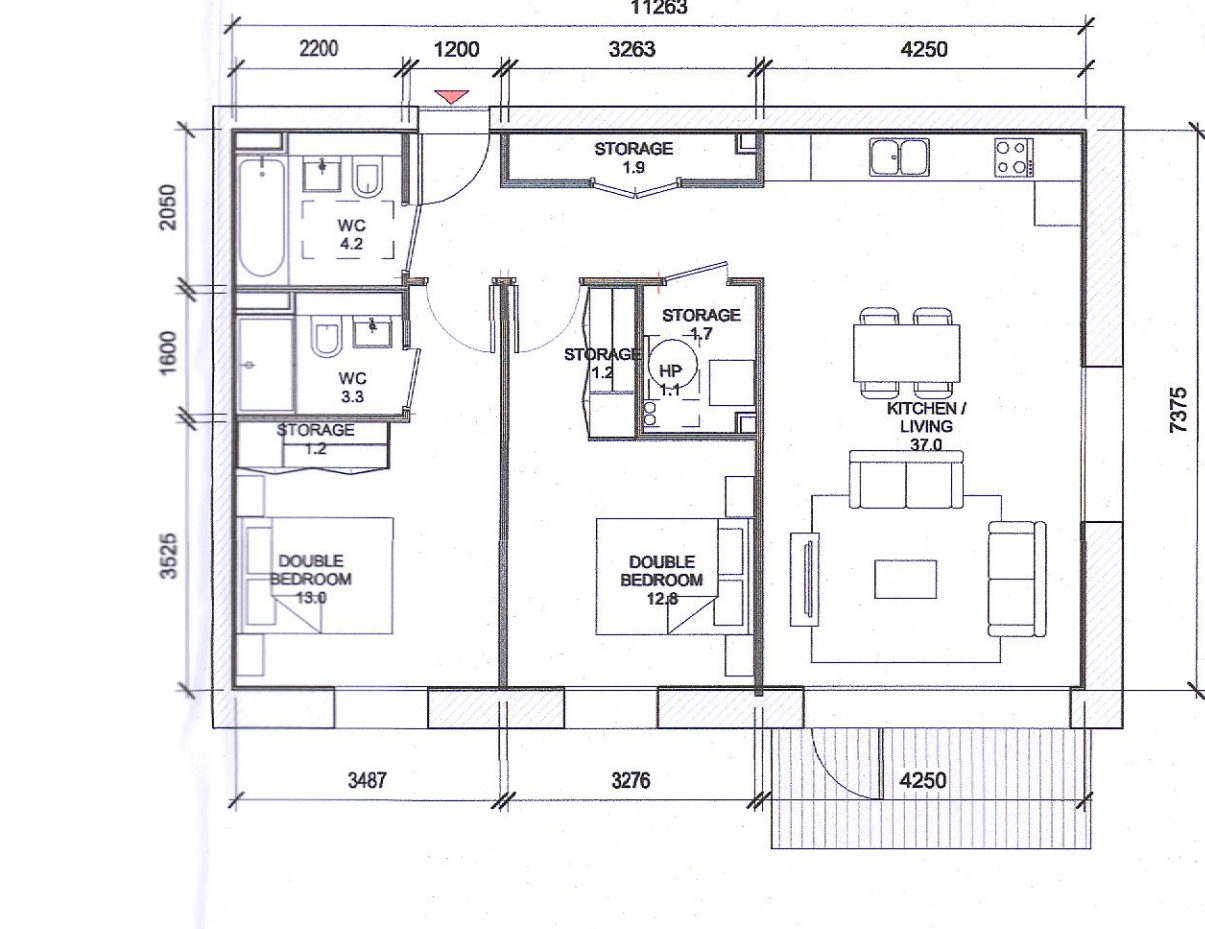
8 T.203 A  
1:100

T.203_A SPACE REQUIREMENTS												
Apartment Area	Required Apartment Area	Required Area Met	Kitchen - Living Area	Required Kitchen - Living Area	Required Area Met	Total Bedroom Area	Required Total Bedroom Area	Required Area Met	Total Storage Area	Required Total Storage Area	Heat Pump Area	
73.8 m <sup>2</sup>	73.0 m <sup>2</sup>	Yes	31.8 m <sup>2</sup>	30.0 m <sup>2</sup>	Yes	24.4 m <sup>2</sup>	24.4 m <sup>2</sup>	Yes	6.0 m <sup>2</sup>	6.0 m <sup>2</sup>	Yes	0.9 m <sup>2</sup>



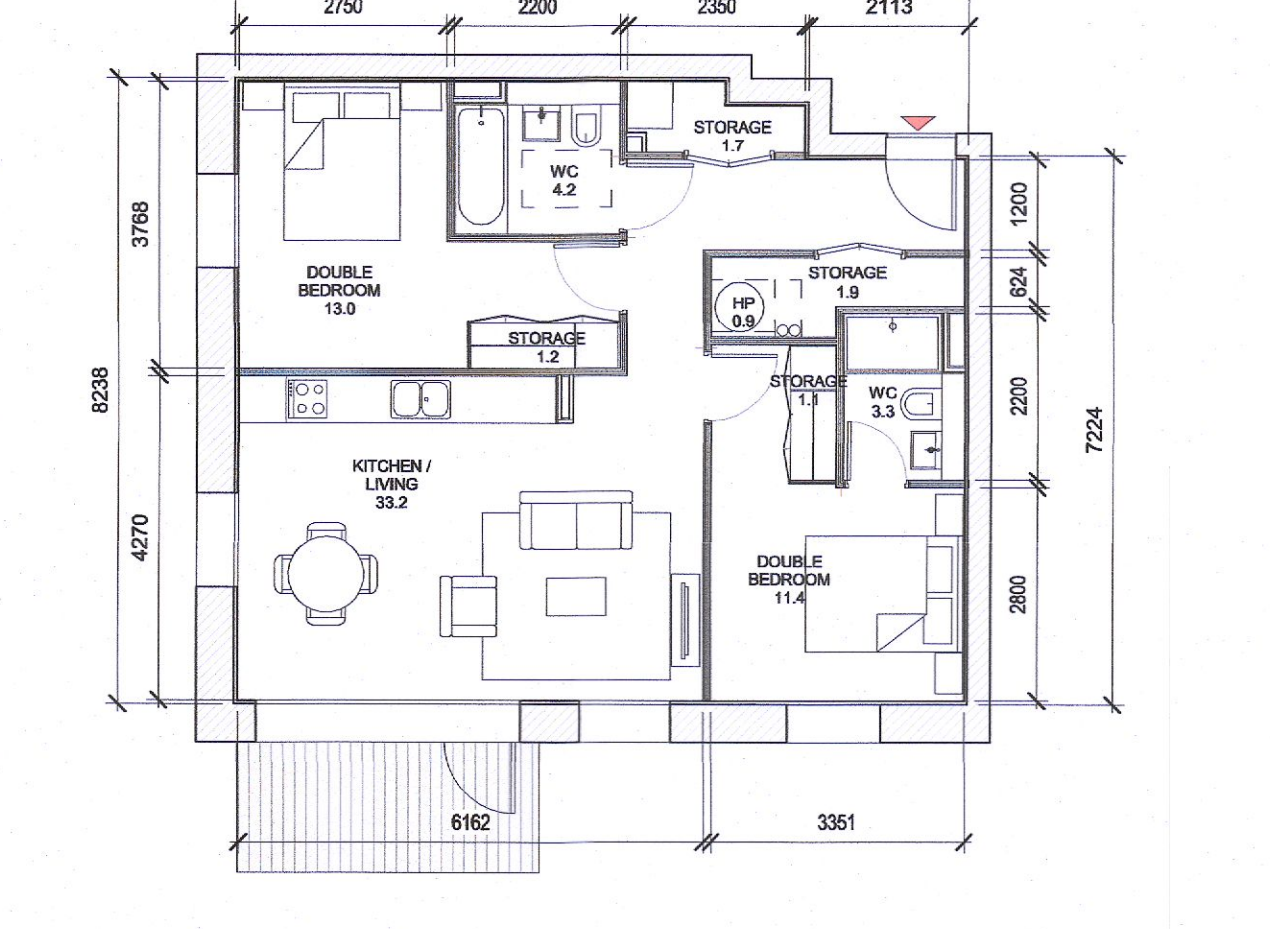
9 T.204 A  
1:100

T.204_A SPACE REQUIREMENTS												
Apartment Area	Required Apartment Area	Required Area Met	Kitchen - Living Area	Required Kitchen - Living Area	Required Area Met	Total Bedroom Area	Required Total Bedroom Area	Required Area Met	Total Storage Area	Required Total Storage Area	Heat Pump Area	
73.7 m <sup>2</sup>	73.0 m <sup>2</sup>	Yes	30.9 m <sup>2</sup>	30.0 m <sup>2</sup>	Yes	25.0 m <sup>2</sup>	24.4 m <sup>2</sup>	Yes	6.1 m <sup>2</sup>	6.0 m <sup>2</sup>	Yes	0.9 m <sup>2</sup>



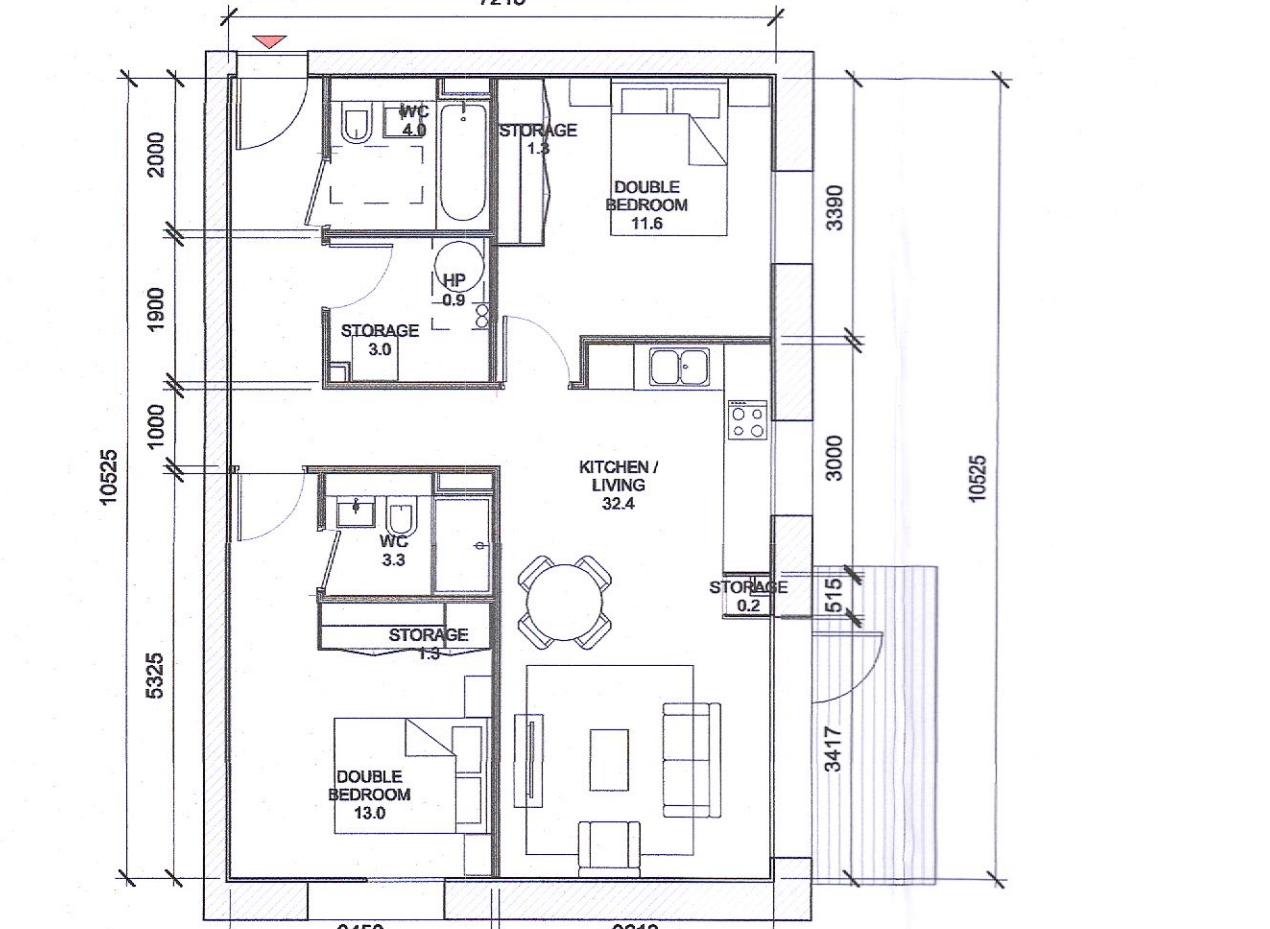
10 T.205 A  
1:100

T.205_A SPACE REQUIREMENTS												
Apartment Area	Required Apartment Area	Required Area Met	Kitchen - Living Area	Required Kitchen - Living Area	Required Area Met	Total Bedroom Area	Required Total Bedroom Area	Required Area Met	Total Storage Area	Required Total Storage Area	Heat Pump Area	
81.2 m <sup>2</sup>	73.0 m <sup>2</sup>	Yes	37.0 m <sup>2</sup>	30.0 m <sup>2</sup>	Yes	25.8 m <sup>2</sup>	24.4 m <sup>2</sup>	Yes	6.0 m <sup>2</sup>	6.0 m <sup>2</sup>	Yes	0.9 m <sup>2</sup>



11 T.206 A  
1:100

T.206_A SPACE REQUIREMENTS												
Apartment Area	Required Apartment Area	Required Area Met	Kitchen - Living Area	Required Kitchen - Living Area	Required Area Met	Total Bedroom Area	Required Total Bedroom Area	Required Area Met	Total Storage Area	Required Total Storage Area	Heat Pump Area	
75.9 m <sup>2</sup>	73.0 m <sup>2</sup>	Yes	33.2 m <sup>2</sup>	30.0 m <sup>2</sup>	Yes	24.4 m <sup>2</sup>	24.4 m <sup>2</sup>	Yes	6.0 m <sup>2</sup>	6.0 m <sup>2</sup>	Yes	0.9 m <sup>2</sup>



12 T.207 A  
1:100

T.207_A SPACE REQUIREMENTS												
Apartment Area	Required Apartment Area	Required Area Met	Kitchen - Living Area	Required Kitchen - Living Area	Required Area Met	Total Bedroom Area	Required Total Bedroom Area	Required Area Met	Total Storage Area	Required Total Storage Area	Heat Pump Area	
74.9 m <sup>2</sup>	73.0 m <sup>2</sup>	Yes	32.4 m <sup>2</sup>	30.0 m <sup>2</sup>	Yes	24.6 m <sup>2</sup>	24.4 m <sup>2</sup>	Yes	6.0 m <sup>2</sup>	6.0 m <sup>2</sup>	Yes	0.9 m <sup>2</sup>

REVISED TYPE

REVISED TYPE

ALL DIMENSIONS TO BE CHECKED ON SITE  
NO DIMENSIONS TO BE SCALED FROM THIS DRAWING  
DRAWING IS TO BE READ IN CONJUNCTION WITH RELEVANT CONSULTANTS DRAWINGS

APARTMENT TYPES 2B						
Count	Apartment Type	Location	Block	Area sqm	Min. Area	
4	2B-3P	T.201 C	C	70.6	63.0	
8	2B-3P	T.201 D	D	65.7	63.0	
1	2B-3P	T.202 C	C	63.2	63.0	
2	2B-3P	T.202 D	D	68.2	63.0	
1	2B-3P	T.203 D	D	71.9	63.0	
2B-3P: 16						
2	2B-4P	T.201 A	A	73.2	73.0	
4	2B-4P	T.202 A	A	74.0	73.0	
4	2B-4P	T.203 A	A	73.8	73.0	
13	2B-4P	T.203 C	C	75.8	73.0	
8	2B-4P	T.204 A	A	73.7	73.0	
16	2B-4P	T.204 C	C	73.6	73.0	
16	2B-4P	T.204 D	D	73.6	73.0	
8	2B-4P	T.204 E	E	74.3	73.0	
8	2B-4P	T.205 A	A	81.2	73.0	
4	2B-4P	T.205 C	C	75.4	73.0	
4	2B-4P	T.205 D	D	76.7	73.0	
27	2B-4P	T.206 A	A	75.9	73.0	
1	2B-4P	T.206 C	C	73.3	73.0	
6	2B-4P	T.206 D	D	80.7	73.0	
8	2B-4P	T.207 A	A	74.9	73.0	
16	2B-4P	T.207 C	C	73.3	73.0	
1	2B-4P	T.207 D	D	81.6	73.0	
2	2B-4P	T.208 A	A	77.2	73.0	
5	2B-4P	T.208 C	C	73.6	73.0	
16	2B-4P	T.208 D	D	80.3	73.0	
2	2B-4P	T.209 A	A	73.4	73.0	
4	2B-4P	T.209 D	D	82.8	73.0	
2	2B-4P	T.210 A	A	78.0	73.0	
3	2B-4P	T.210 D	D	81.5	73.0	
1	2B-4P	T.211 D	D	78.8	73.0	
3	2B-4P	T.212 D	D	78.9	73.0	
3	2B-4P	T.213 D	D	74.0	73.0	
2	2B-4P	T.214 D	D	83.3	73.0	
2	2B-4P	T.215 D	D	78.3	73.0	
1	2B-4P	T.216 D	D	75.7	73.0	
1	2B-4P	T.217 D	D	85.2	73.0	
3	2B-4P	T.218 D	D	82.4	73.0	
Grand total: 211						

NON RFI RELATED CHANGES

STATUTORY CHANGES

DESIGN CHANGES

GENERAL NOTES:

01 ALL INTERNAL APARTMENT LAYOUTS HAVE BEEN AMENDED DUE TO DESIGN DEVELOPMENT AND CO-ORDINATION WITH OTHER DISCIPLINES. THE INDIVIDUAL UNITS MAINTAIN THE SPACE REQUIREMENT GUIDELINES AS PER THE ORIGINAL PLANNING SUBMISSION

02 MINOR AMENDMENTS TO M&E AND SE LAYOUTS DUE TO DESIGN DEVELOPMENT & TO ACCOMMODATE COMPLIANCE WITH STATUTORY REQUIREMENTS

03 REDUCED PARAPET HEIGHT & FALL ARREST SYSTEM INTRODUCED TO BLOCKS A,C,D AND RESIDENT PAVILLION BUILDINGS DUE TO MAINTENANCE. PARAPET HEIGHT OF TOWER ELEMENT OF BLOCK G1 RETAINED AS PER ORIGINAL PLANNING APPLICATION

P02	06/09/2022	ISSUED FOR FURTHER INFORMATION	RJ	SEN
P01	08/04/2022	ISSUED FOR PLANNING	RJ	FM
REV	DATE	DESCRIPTION	CHK	DRN

STATUS CODE DESCRIPTION

ISSUED FOR FURTHER INFORMATION

CLIENT

QUINTAIN IRELAND LTD.

PROJECT

ADAMSTOWN STATION BLOCKS ACD

DRAWING

APARTMENT TYPES Sheet 3  
2B Apartments

PROJECT NUMBER	DATE	
850747	08/04/22	
SCALE@ A1:	DRAWN/CHECKED:	
As Indicated	SEN RJ	
STATUS CODE:	DRAWING NUMBER	REVISION
A1	ADC3-HUL-ACD-ZZ-DR-A-P8003	P02

Henry J Lyons

Architecture + Interiors  
henryjlyons.com

+353 1 888 3333  
info@henryjlyons.com

51-54 Pearse Street  
Dublin D02 KA66

HJL Drawing Number on previously lodged planning application: SDZ22A/0005  
ADC3-HUL-ACD-ZZ-DR-A-P8003 Revision (P01)

Red dash line indicates extent of amendments to address RFI 0723 dated 08 JUNE 2022