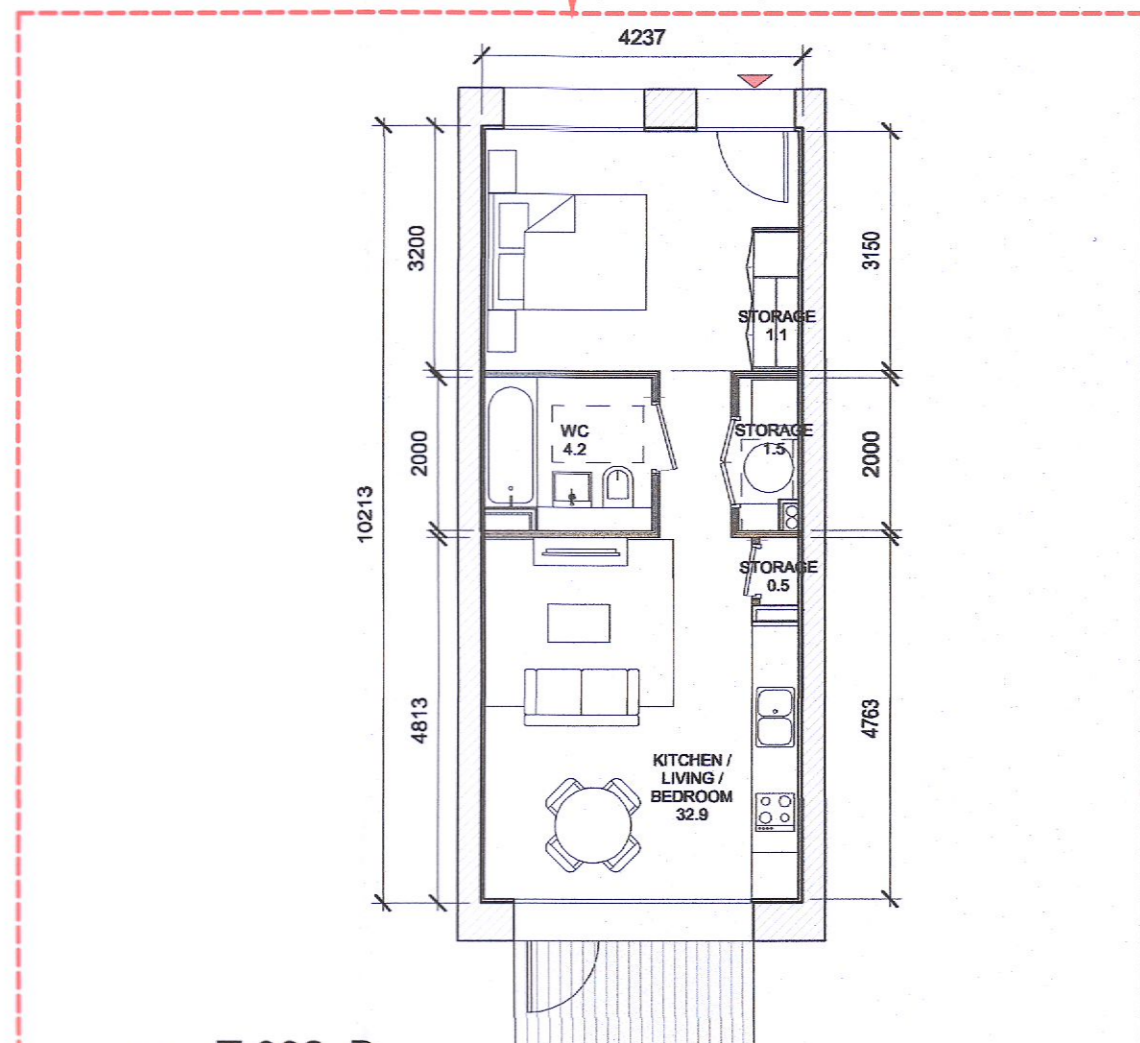


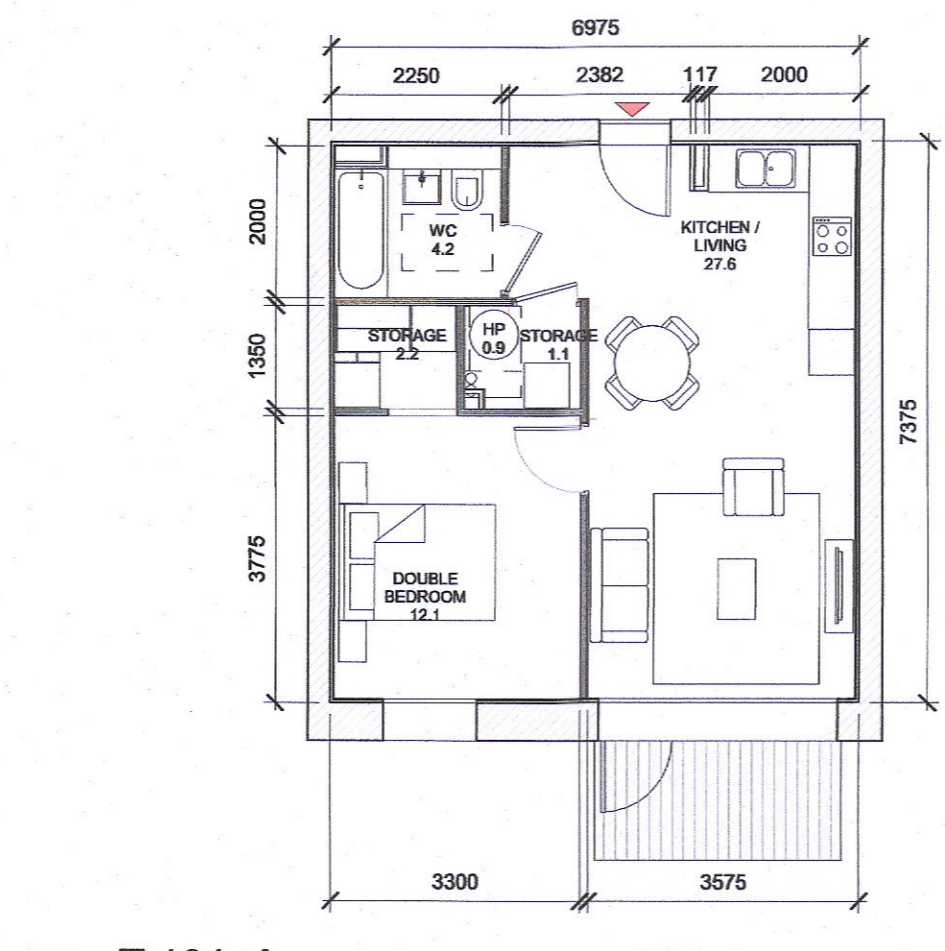
1 T.001 D
1:100

T.001_D SPACE REQUIREMENTS									
Apartment Area	Required Apartment Area	Required Area Met	Kitchen - Living Area	Required Kitchen - Living Area	Total Bedroom Area	Required Total Bedroom Area	Total Storage Area	Required Total Storage Area	Heat Pump Area
38.8 m ²	37.0 m ²	Yes	30.8 m ²	30.0 m ²	0.0 m ²	3.0 m ²	3.0 m ²	3.0 m ²	Yes 0.9 m ²



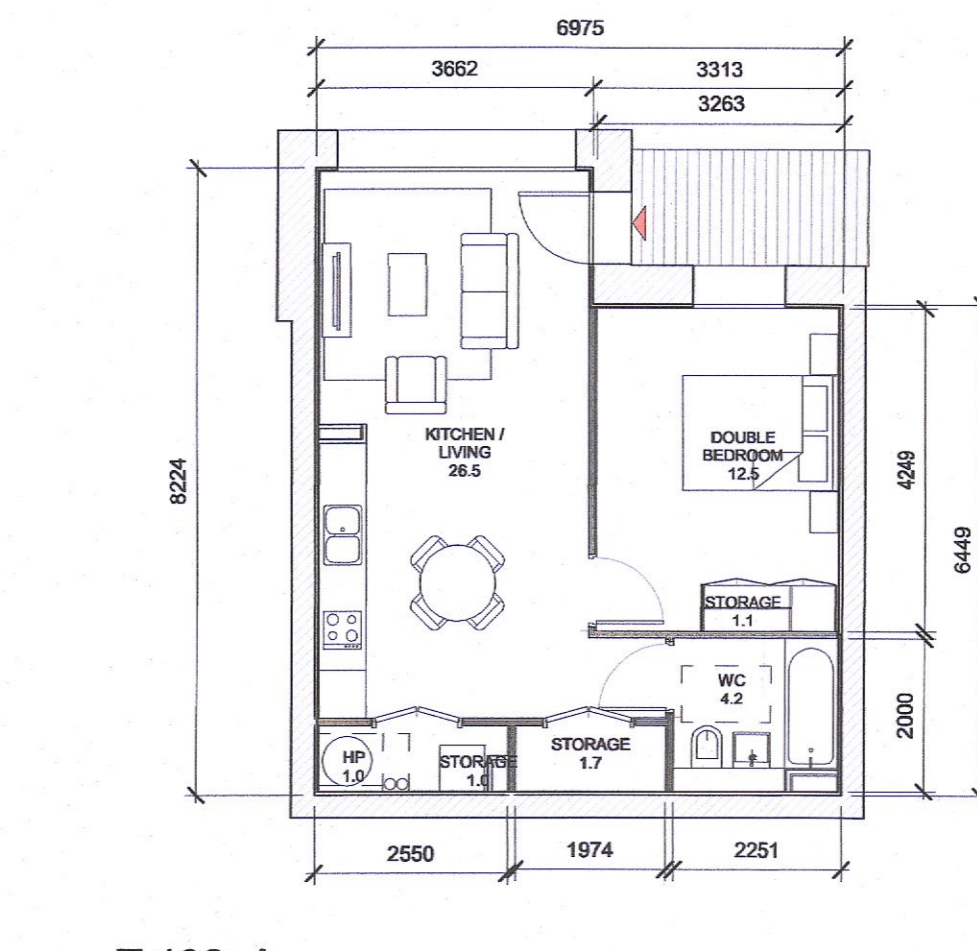
2 T.002 D
1:100

T.002_D SPACE REQUIREMENTS									
Apartment Area	Required Apartment Area	Required Area Met	Kitchen - Living Area	Required Kitchen - Living Area	Total Bedroom Area	Required Total Bedroom Area	Total Storage Area	Required Total Storage Area	Heat Pump Area
41.8 m ²	37.0 m ²	Yes	32.9 m ²	30.0 m ²	0.0 m ²	3.2 m ²	3.0 m ²	3.0 m ²	Yes 0.9 m ²



3 T.101 A
1:100

T.101_A SPACE REQUIREMENTS									
Apartment Area	Required Apartment Area	Required Area Met	Kitchen - Living Area	Required Kitchen - Living Area	Total Bedroom Area	Required Total Bedroom Area	Total Storage Area	Required Total Storage Area	Heat Pump Area
50.0 m ²	45.0 m ²	Yes	27.8 m ²	23.0 m ²	Yes	12.1 m ²	11.4 m ²	Yes	3.3 m ²



4 T.102 A
1:100

T.102_A SPACE REQUIREMENTS									
Apartment Area	Required Apartment Area	Required Area Met	Kitchen - Living Area	Required Kitchen - Living Area	Total Bedroom Area	Required Total Bedroom Area	Total Storage Area	Required Total Storage Area	Heat Pump Area
50.0 m ²	45.0 m ²	Yes	26.5 m ²	23.0 m ²	Yes	12.5 m ²	11.4 m ²	Yes	3.8 m ²

APARTMENT TYPES 1B

Count	APARTMENT TYPE		LOCATION		APARTMENT AREA	
	Unit Type	Type Name	Block	Area sqm	Min. Area	
5	1 ST	T.001_D	D	39.8	37.0	
4	1 ST	T.002_D	D	41.8	37.0	
1 ST: 9						

33	1B	T.101_A	A	50.0	45.0	
4	1B	T.101_A	C	50.0	45.0	
20	1B	T.101_C	C	49.5	45.0	
40	1B	T.101_C	D	49.5	45.0	
3	1B	T.101_D	D	50.0	45.0	
2	1B	T.102_A	A	50.0	45.0	
1	1B	T.102_C	C	54.3	45.0	
8	1B	T.102_D	D	50.7	45.0	
8	1B	T.103_A	A	48.2	45.0	
8	1B	T.103_C	C	49.7	45.0	
6	1B	T.103_D	D	51.0	45.0	
4	1B	T.104_A	A	50.0	45.0	
9	1B	T.104_C	C	51.0	45.0	
8	1B	T.104_D	D	49.5	45.0	
8	1B	T.105_A	A	50.2	45.0	
8	1B	T.105_C	C	50.1	45.0	
4	1B	T.105_D	D	48.0	45.0	
4	1B	T.106_A	A	48.4	45.0	
8	1B	T.106_C	C	50.0	45.0	
3	1B	T.106_D	D	48.5	45.0	
8	1B	T.107_A	A	50.0	45.0	
1	1B	T.107_C	C	50.0	45.0	
1	1B	T.108_A	A	53.5	45.0	
2	1B	T.108_C	C	49.7	45.0	
1	1B	T.109_A	A	47.3	45.0	
2	1B	T.110_A	A	53.8	45.0	

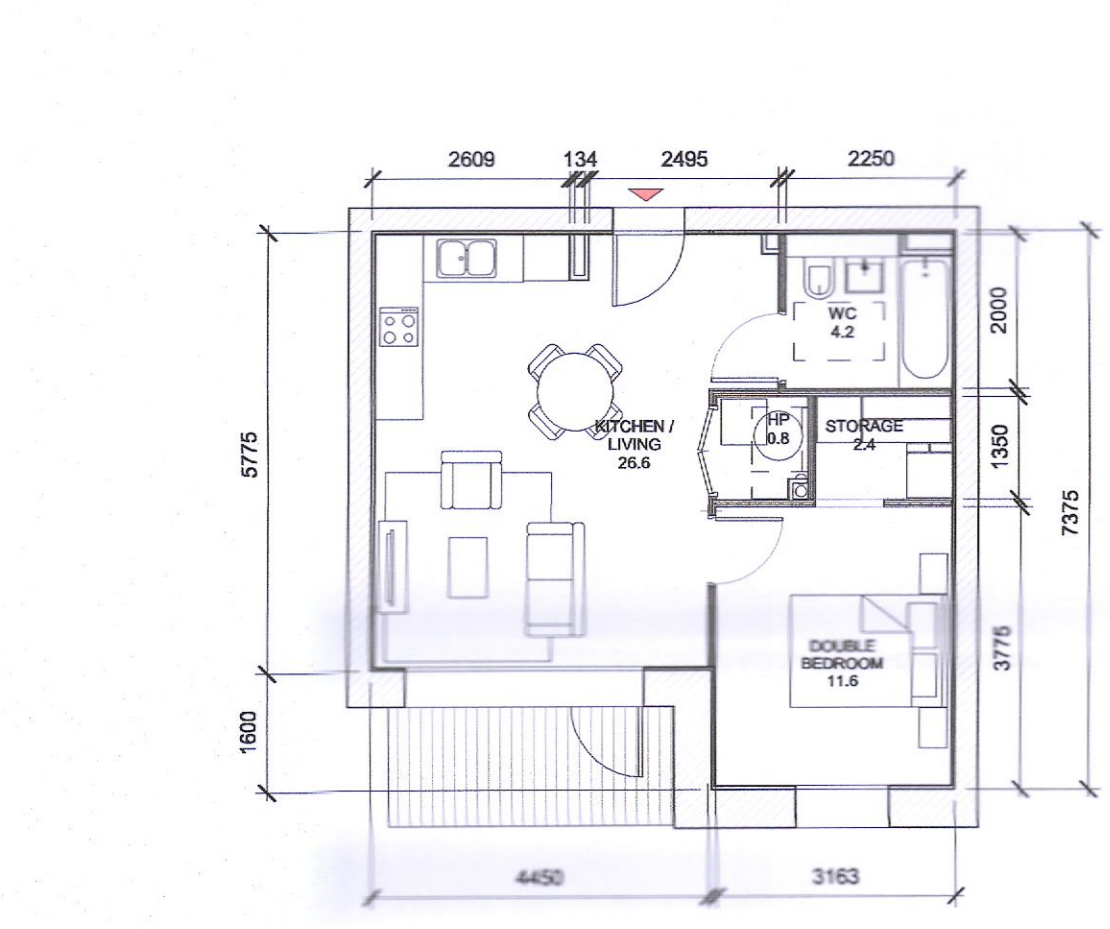
1B: 202
Grand total: 211

NON RFI RELATED CHANGES



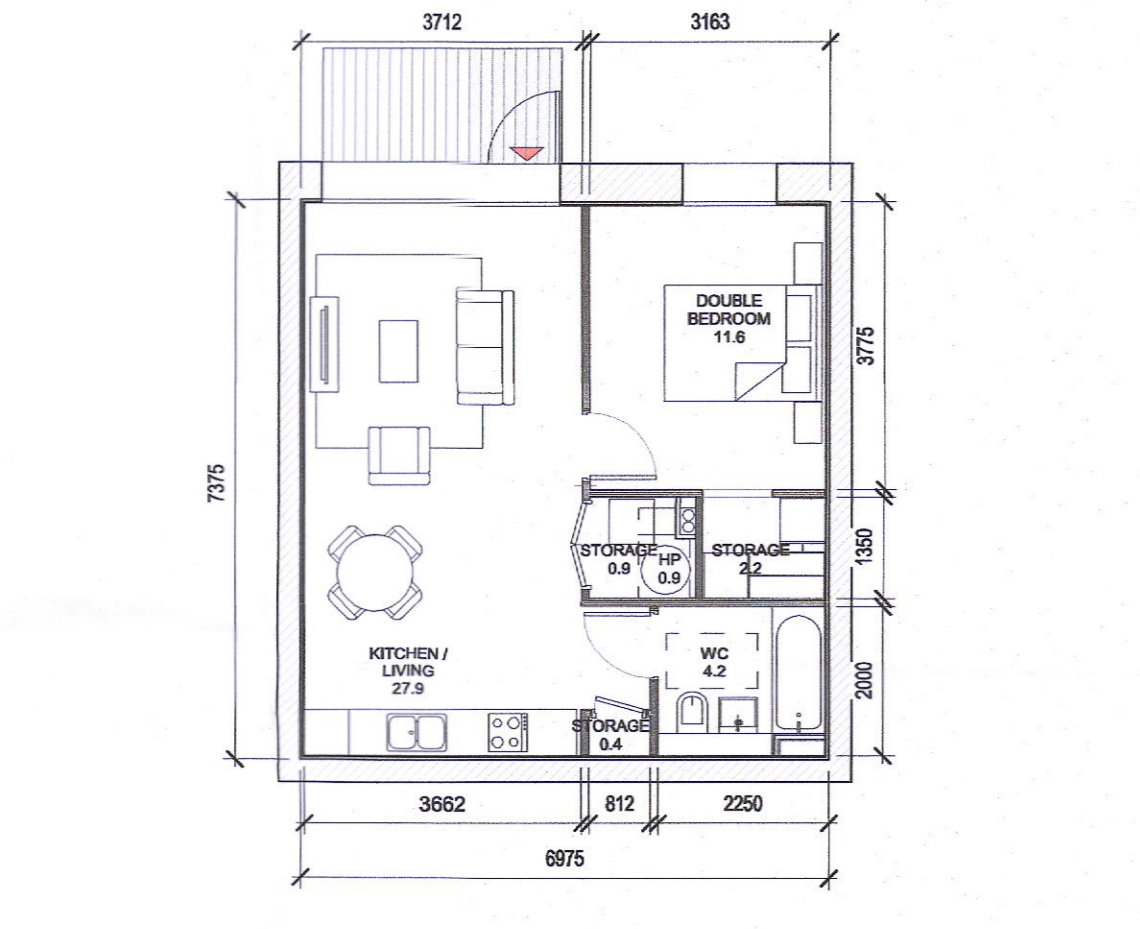
GENERAL NOTES:
O1 ALL INTERNAL APARTMENT LAYOUTS HAVE BEEN AMENDED DUE TO DESIGN DEVELOPMENT AND CO-ORDINATION WITH OTHER DISCIPLINES. THE INDIVIDUAL UNITS MAINTAIN THE SPACE REQUIREMENT GUIDELINES AS PER THE ORIGINAL PLANNING SUBMISSION
O2 MINOR AMENDMENTS TO M&E AND SE LAYOUTS DUE TO DESIGN DEVELOPMENT & TO ACCOMMODATE COMPLIANCE WITH STATUTORY REQUIREMENTS
O3 REDUCED PARAPET HEIGHT & FALL ARREST SYSTEM INTRODUCED TO BLOCKS A,C,D AND RESIDENT PAVILLION BUILDINGS DUE TO MAINTENANCE. PARAPET HEIGHT OF TOWER ELEMENT OF BLOCK C1 RETAINED AS PER ORIGINAL PLANNING APPLICATION

Red dash line indicates extent of amendments to address RFI 0723 dated 08 JUNE 2022



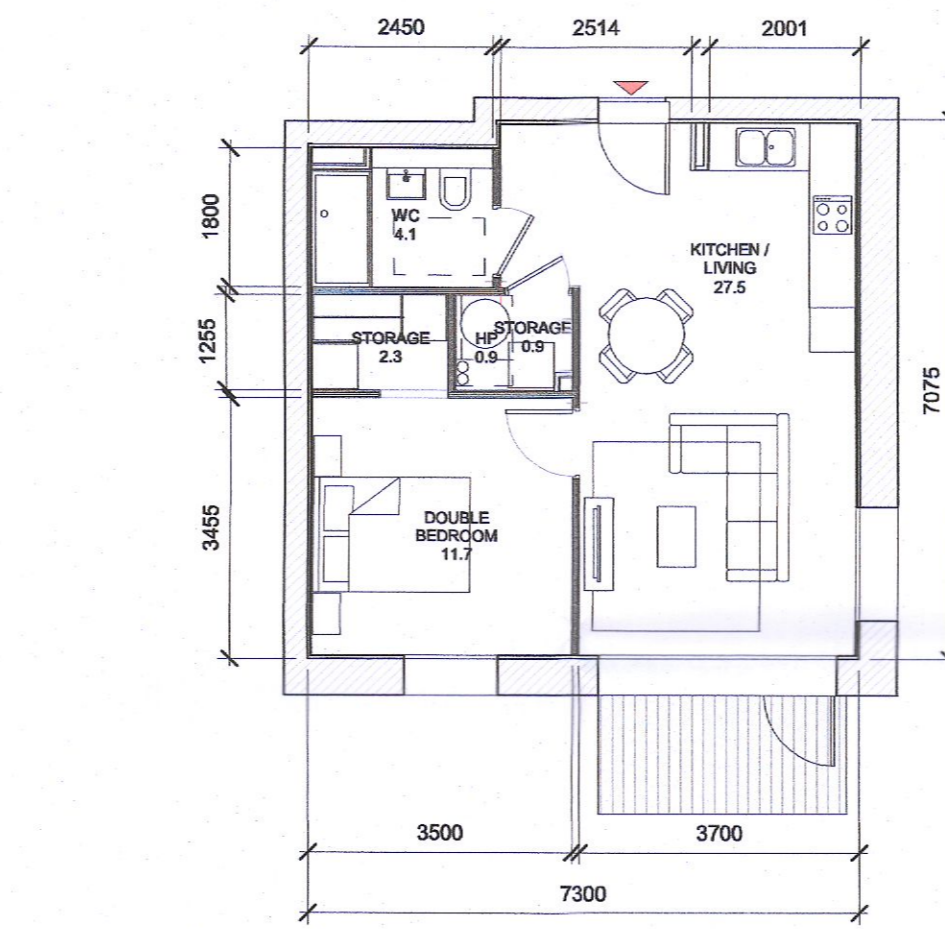
5 T.103 A
1:100

T.103_A SPACE REQUIREMENTS									
Apartment Area	Required Apartment Area	Required Area Met	Kitchen - Living Area	Required Kitchen - Living Area	Total Bedroom Area	Required Total Bedroom Area	Total Storage Area	Required Total Storage Area	Heat Pump Area
48.2 m ²	45.0 m ²	Yes	36.6 m ²	23.0 m ²	Yes	11.6 m ²	11.4 m ²	Yes	3.0 m ²



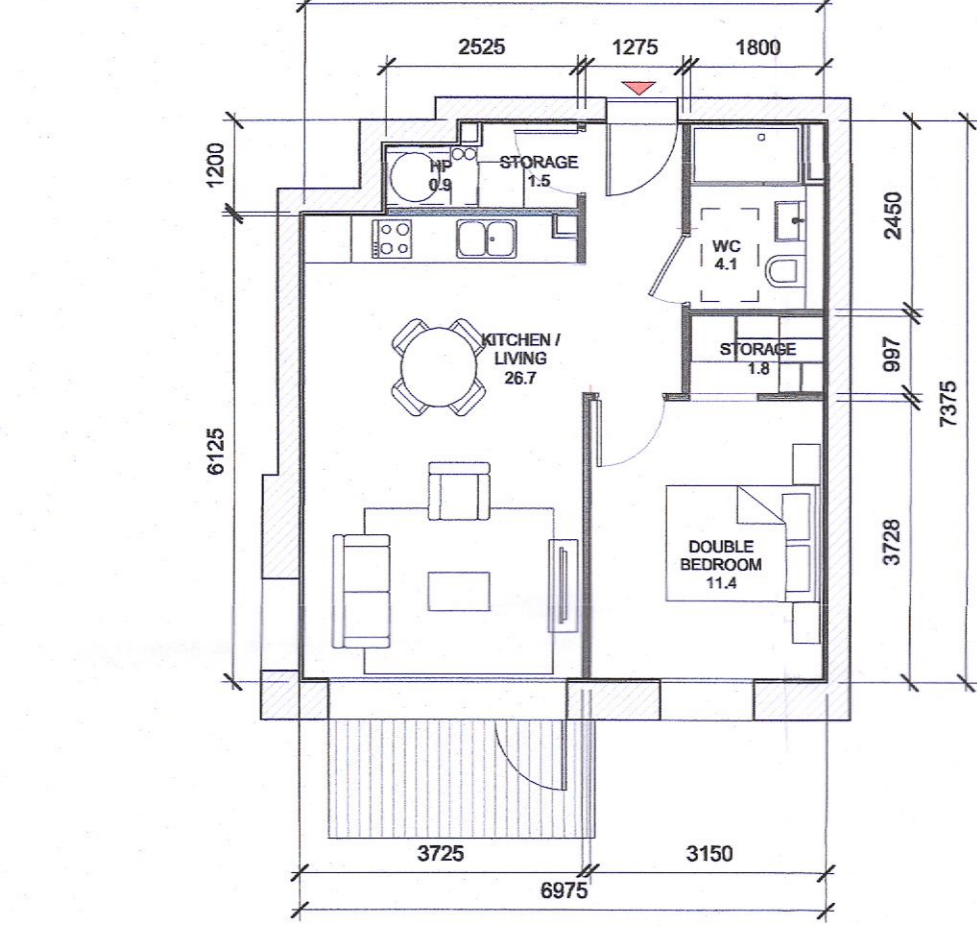
6 T.104 A
1:100

T.104_A SPACE REQUIREMENTS									
Apartment Area	Required Apartment Area	Required Area Met	Kitchen - Living Area	Required Kitchen - Living Area	Total Bedroom Area	Required Total Bedroom Area	Total Storage Area	Required Total Storage Area	Heat Pump Area
50.0 m ²	45.0 m ²	Yes	27.8 m ²	23.0 m ²	Yes	11.6 m ²	11.4 m ²	Yes	3.5 m ²



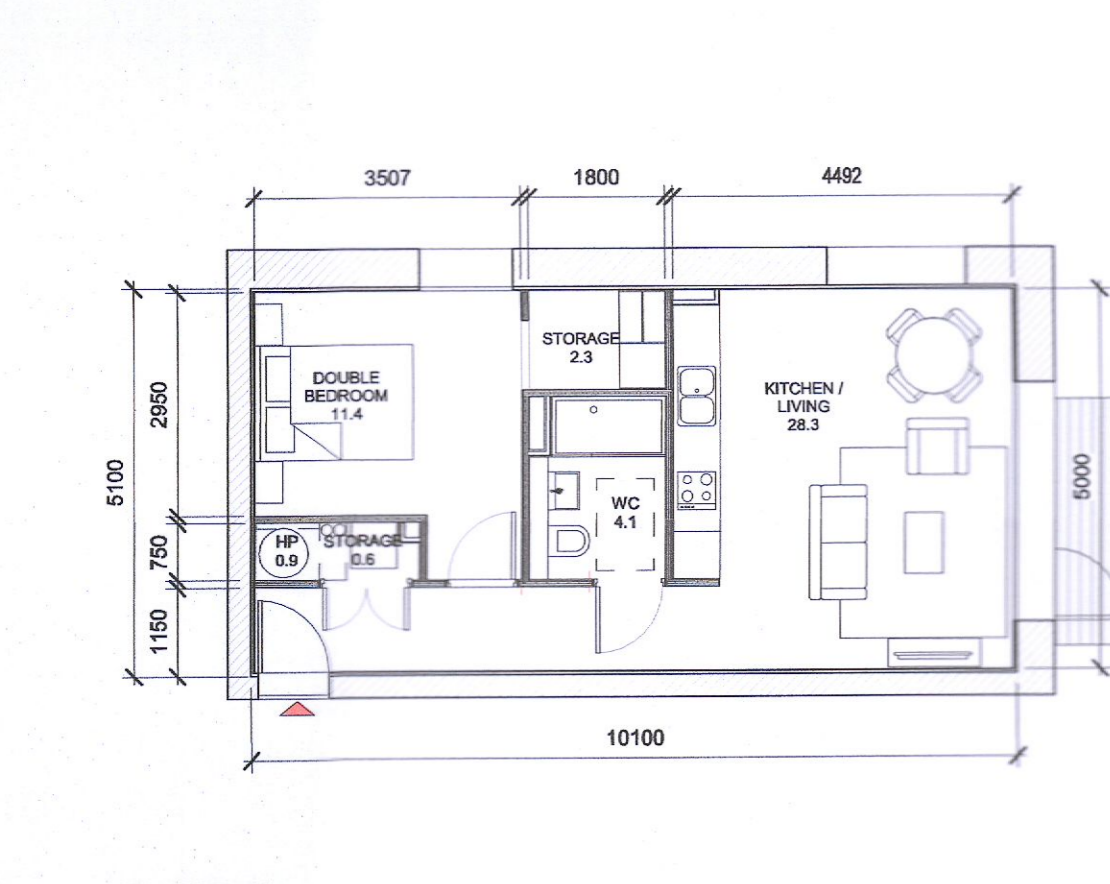
7 T.105 A
1:100

T.105_A SPACE REQUIREMENTS									
Apartment Area	Required Apartment Area	Required Area Met	Kitchen - Living Area	Required Kitchen - Living Area	Total Bedroom Area	Required Total Bedroom Area	Total Storage Area	Required Total Storage Area	Heat Pump Area
50.2 m ²	45.0 m ²	Yes	27.5 m ²	23.0 m ²	Yes	11.7 m ²	11.4 m ²	Yes	3.2 m ²



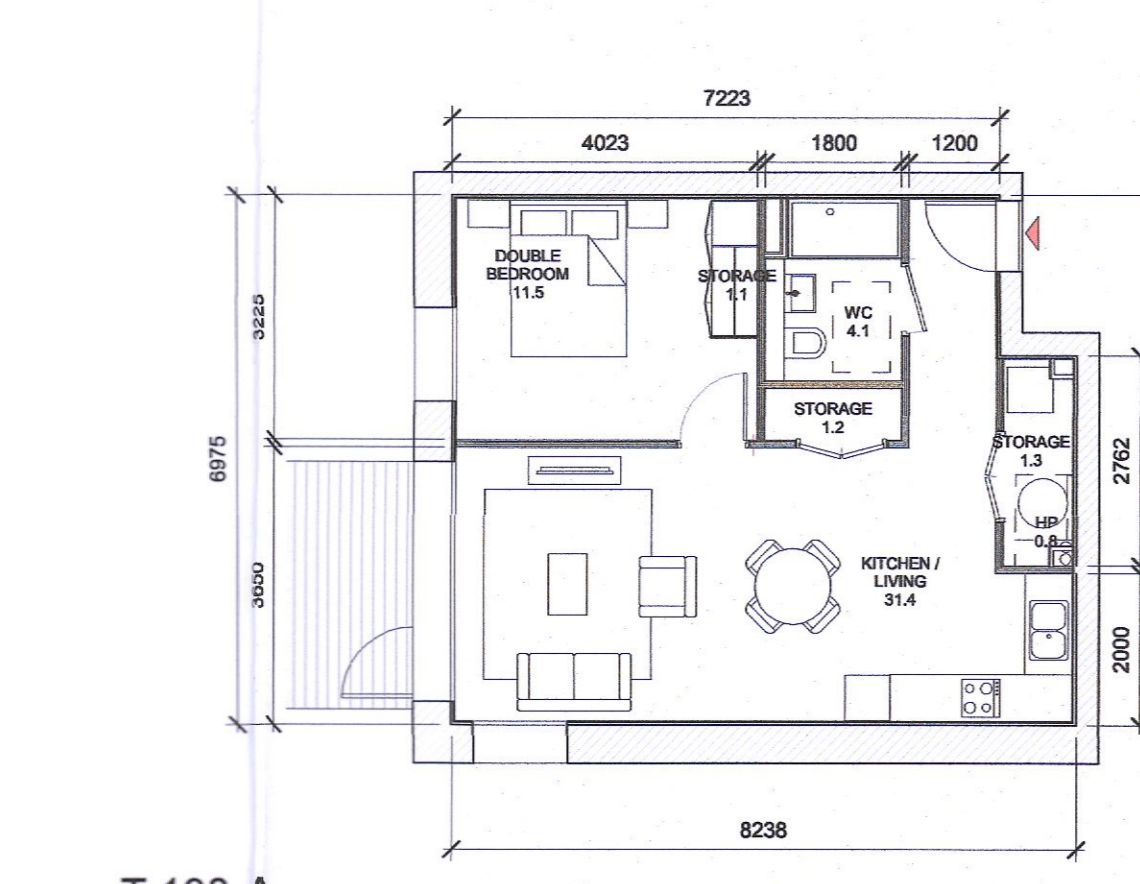
8 T.106 A
1:100

T.106_A SPACE REQUIREMENTS									
Apartment Area	Required Apartment Area	Required Area Met	Kitchen - Living Area	Required Kitchen - Living Area	Total Bedroom Area	Required Total Bedroom Area	Total Storage Area	Required Total Storage Area	Heat Pump Area
48.4 m ²	45.0 m ²	Yes	26.6 m ²	23.0 m ²	Yes	11.4 m ²	11.4 m ²	Yes	3.3 m ²



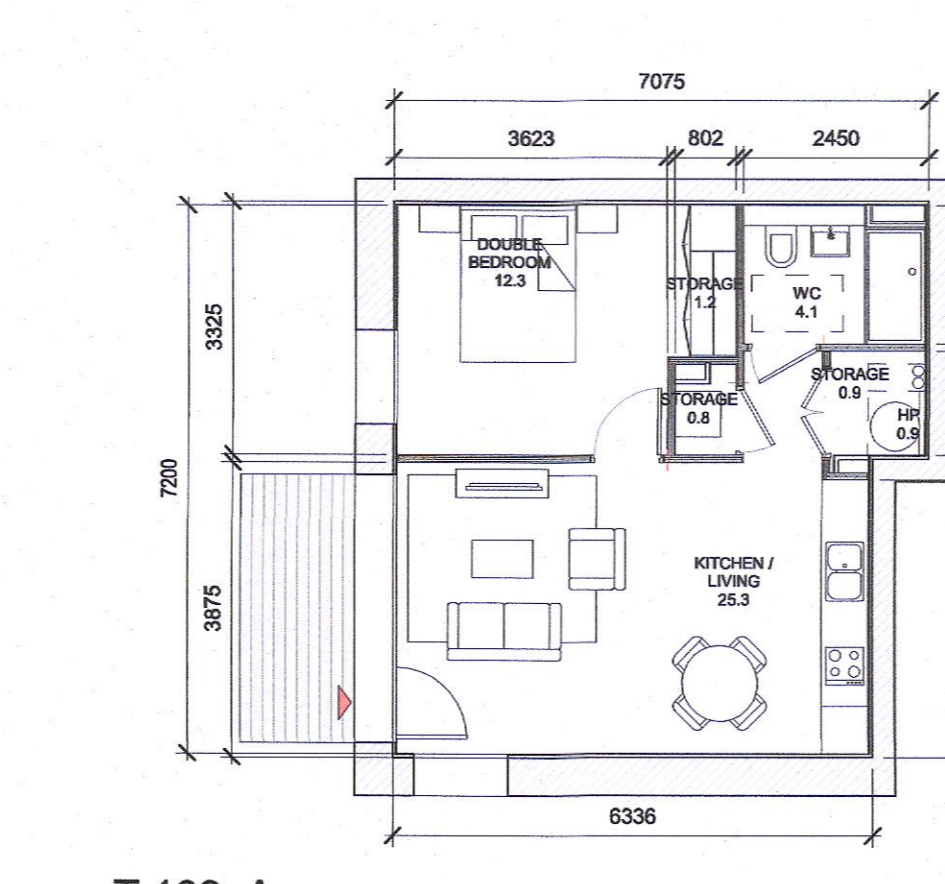
9 T.107 A
1:100

T.107_A SPACE REQUIREMENTS									
Apartment Area	Required Apartment Area	Required Area Met	Kitchen - Living Area	Required Kitchen - Living Area	Total Bedroom Area	Required Total Bedroom Area	Total Storage Area	Required Total Storage Area	Heat Pump Area
50.0 m ²	45.0 m ²	Yes	28.3 m ²	23.0 m ²	Yes	11.4 m ²	11.4 m ²	Yes	3.0 m ²



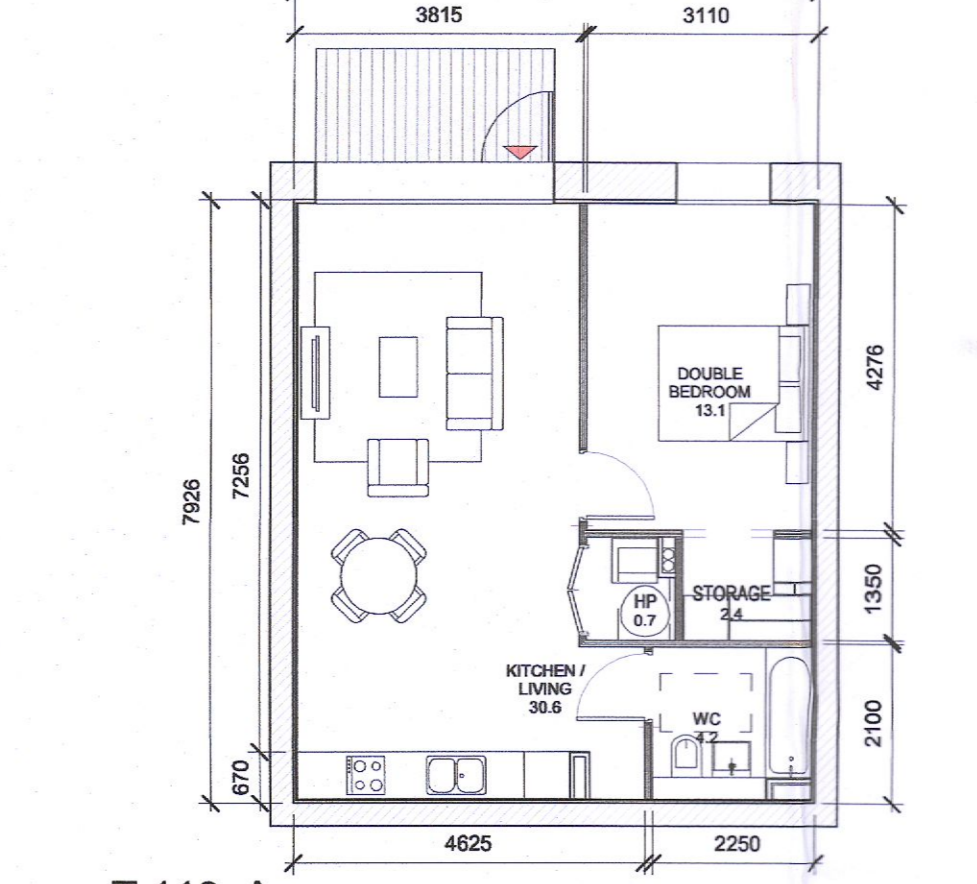
10 T.108 A
1:100

T.108_A SPACE REQUIREMENTS									
Apartment Area	Required Apartment Area	Required Area Met	Kitchen - Living Area	Required Kitchen - Living Area	Total Bedroom Area	Required Total Bedroom Area	Total Storage Area	Required Total Storage Area	Heat Pump Area
53.5 m ²	45.0 m ²	Yes	31.4 m ²	23.0 m ²	Yes	11.5 m ²	11.4 m ²	Yes	3.7 m ²



11 T.109 A
1:100

T.109_A SPACE REQUIREMENTS									
Apartment Area	Required Apartment Area	Required Area Met	Kitchen - Living Area	Required Kitchen - Living Area	Total Bedroom Area	Required Total Bedroom Area	Total Storage Area	Required Total Storage Area	Heat Pump Area
47.3 m ²	45.0 m ²	Yes	25.3 m ²	23.0 m ²	Yes	12.3 m ²	11.4 m ²	Yes	3.0 m ²



12 T.110 A
1:100

T.110_A SPACE REQUIREMENTS									
Apartment Area	Required Apartment Area	Required Area Met	Kitchen - Living Area	Required Kitchen - Living Area	Total Bedroom Area	Required Total Bedroom Area	Total Storage Area	Required Total Storage Area	Heat Pump Area
53.8 m ²	45.0 m ²	Yes	30.6 m ²	23.0 m ²	Yes	13.1 m ²	11.4 m ²	Yes	3.1 m ²

REV	DATE	DESCRIPTION	CHK	DRN
P02	06/09/2022	ISSUED FOR FURTHER INFORMATION	RJ	SEN
P01	08/04/2022	ISSUED FOR PLANNING	RJ	FM

ISSUED FOR FURTHER INFORMATION

CLIENT
QUINTAIN IRELAND LTD.
PROJECT
ADAMSTOWN STATION BLOCKS ACD
DRAWING
APARTMENT TYPES Sheet 1
Studio & 1B Apartments

PROJECT NUMBER	DATE	DRAWING CHECKED:	REVISION
850747	08/04/22	SEN/RJ	
STATUS CODE:	DRAWING NUMBER	REVISION	
A1	ADC3-HJL-ACD-ZZ-DR-A-P8001	P02	

Henry J Lyons

Architecture + Interiors
henryjlyons.com
+353 1 888 3333
info@henryjlyons.com
51-54 Pearse Street
Dublin D02 KA66

HJL Drawing Number in previously lodged planning application:
SD222A/0005
ADC3-HJL-ACD-ZZ-DR-A-P8001 Revision (P01)