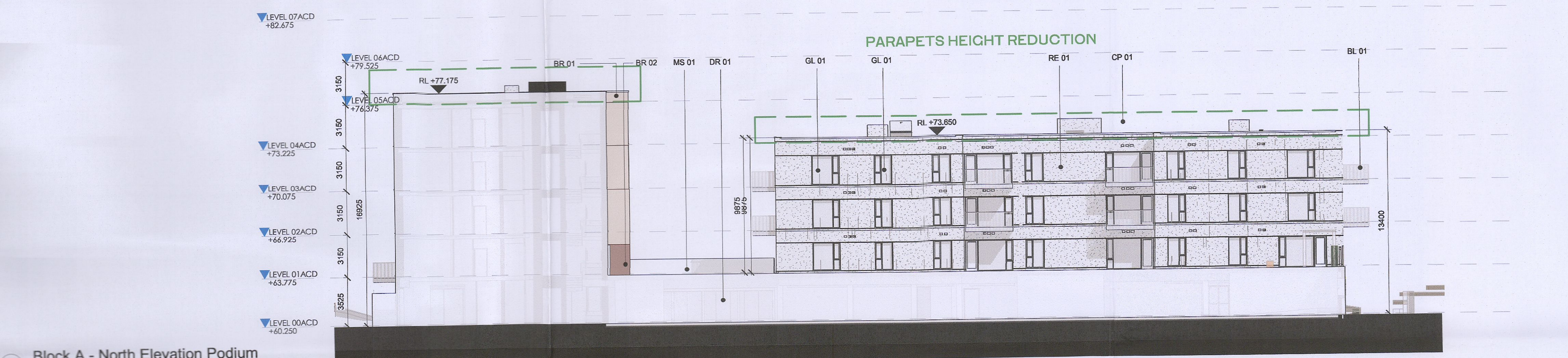
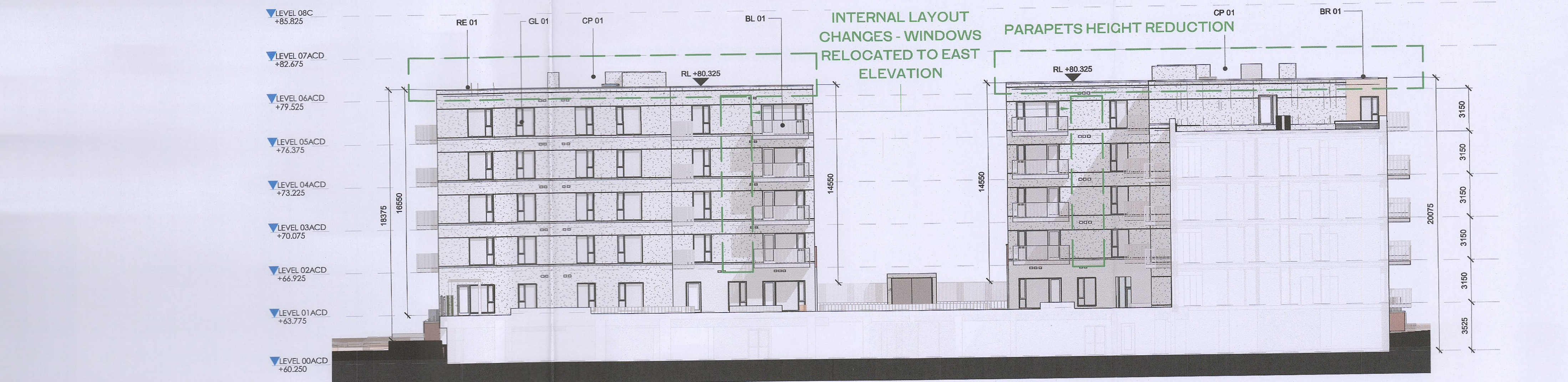


1 Block A - East Elevation Podium
1 : 200



2 Block A - North Elevation Podium
1 : 200



3 Block A - South Elevation Podium
1 : 200



4 Block A - West Elevation Podium
1 : 200

WINDOWS REMOVED DUE TO DESIGN CHANGES
INTERNAL LAYOUT CHANGES - WINDOWS RELOCATED FROM SOUTH ELEVATION

PARAPETS HEIGHT REDUCTION

INTERNAL LAYOUT CHANGES - WINDOWS RELOCATED TO EAST ELEVATION
PARAPETS HEIGHT REDUCTION

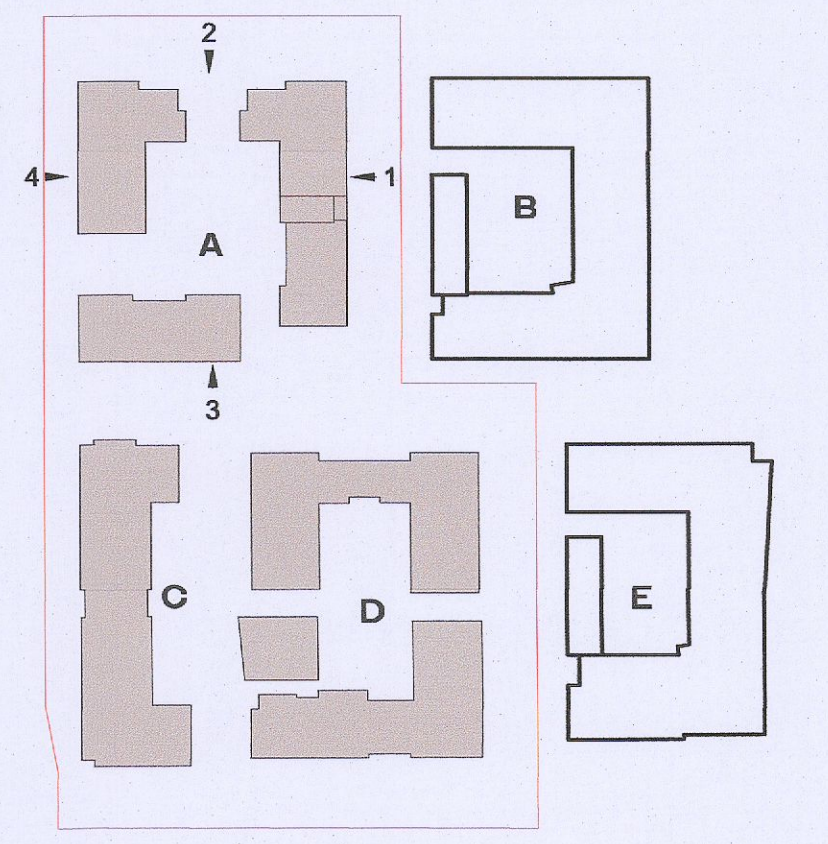
PARAPETS HEIGHT REDUCTION

NON RFI RELATED CHANGES

- STATUTORY CHANGES
- DESIGN CHANGES

GENERAL NOTES:
 O1 ALL INTERNAL APARTMENT LAYOUTS HAVE BEEN AMENDED DUE TO DESIGN DEVELOPMENT AND CO-ORDINATION WITH OTHER DISCIPLINES. THE INDIVIDUAL UNITS MAINTAIN THE SPACE REQUIREMENT GUIDELINES AS PER THE ORIGINAL PLANNING SUBMISSION
 O2 MINOR AMENDMENTS TO M&E AND SE LAYOUTS DUE TO DESIGN DEVELOPMENT & TO ACCOMMODATE COMPLIANCE WITH STATUTORY REQUIREMENTS
 O3 REDUCED PARAPET HEIGHT & FALL ARREST SYSTEM INTRODUCED TO BLOCKS A,C,D AND RESIDENT PAVILLION BUILDINGS DUE TO MAINTENANCE. PARAPET HEIGHT OF TOWER ELEMENT OF BLOCK C1 RETAINED AS PER ORIGINAL PLANNING APPLICATION

ALL DIMENSIONS TO BE CHECKED ON SITE
 NO DIMENSIONS TO BE SCALED FROM THIS DRAWING
 DRAWING IS TO BE READ IN CONJUNCTION WITH RELEVANT CONSULTANTS DRAWINGS



Red dash line indicates extent of amendments to address RFI 0723 dated 08 JUNE 2022

RFI 1 (a)

Block D North - Changes to Core entrance hall facing Great Western Way updated to accommodate new apartment type T.301_D revised apartment type T.102_D

RFI 1 (b)

Block D South - Changes to apartment type T.201_D and T.202_D to overcome privacy/overlooking issues

RFI 2

Block D South - Changes to facade material to brick on the upper floor levels

HJL Drawing Number on previously lodged planning application: SDZ22A/0005
 ADC3-HJL-ACD-ZZ-DR-A-P2011 Revision (P01)

ELEVATION MATERIAL LEGEND

- BE 01 - METALIC BALCONY SCREEN WITH PPC FINISH
- BL 01 - BALCONY SYSTEM WITH PPC METAL RAILING
- BL 02 - BALCONY SYSTEM WITH GLAZED BALUSTRADE
- BL 03 - SELECTED RAINSCREEN CLADDING
- BR 01 - SELECTED LIGHT RED COLOURED BRICK
- BR 02 - SELECTED DARK RED COLOURED BRICK
- BR 03 - SELECTED LIGHT GREY COLOURED BRICK
- BR 04 - SELECTED GLAZED BRICK
- BR 05 - ARCHITECTURAL BRICK FEATURE
- CL 01 - RAINSCREEN CLADDING
- CP 01 - PRESSED ALUMINIUM CAPPING WITH PPC FINISH
- CW 01 - SELECTED CURTAIN WALL GLAZING SYSTEM
- DR 01 - SELECTED GLAZED ENTRANCE DOOR AND SIGNAGE
- DR 02 - METAL DOOR WITH PPC FINISH
- ES 01 - ESB DOORS
- GA 01 - GLAZED ENTRANCE GATE
- GL 01 - SELECTED DOUBLE GLAZED WINDOW SYSTEM
- MS 01 - SELECTED MESH SCREENING
- RE 01 - LIGHT EXTERNAL INSULATED RENDER FINISH
- RE 02 - LIGHT RED EXTERNAL RENDER FINISH
- RE 03 - DARK EXTERNAL INSULATED RENDER FINISH
- RL 01 - PPC METAL ENCLOSURE TO BICYCLE STORE
- RL 02 - PPC METAL GATE
- RL 03 - PPC METAL RAILINGS
- AB 01 - AIRBRICK
- CA 01 - FAIRFACED RC CANOPY
- PS 01 - PERFORATED METAL SCREEN GATES
- RP 01 - RAIN WATER PIPES
- SG 01 - SHADOW GAP IN RENDERED FINISH

REV	DATE	DESCRIPTION	CHK	DRN
P02	06/09/2022	ISSUED FOR FURTHER INFORMATION	RJ	SEN
P01	08/04/2022	ISSUED FOR PLANNING	RJ	FM

STATUS CODE DESCRIPTION
 SUITABLE FOR INFORMATION

CLIENT
 QUINTAIN IRELAND LTD.

PROJECT
 ADAMSTOWN STATION BLOCKS ACD

DRAWING
 BLOCK A ELEVATIONS PODIUM

PROJECT NUMBER
 950747

DATE
 08/04/22

SCALE@ A1:
 As indicated

DRAWN/CHECKED:
 FM/RJ

STATUS CODE: DRAWING NUMBER REVISION
 S2 ADC3-HJL-ACD-ZZ-DR-A-P2011 P02

Henry J Lyons

Architecture + Interiors
 henyjlyons.com +353 1 888 3333 info@henryjlyons.com 51-54 Pearse Street Dublin D02 K4G6