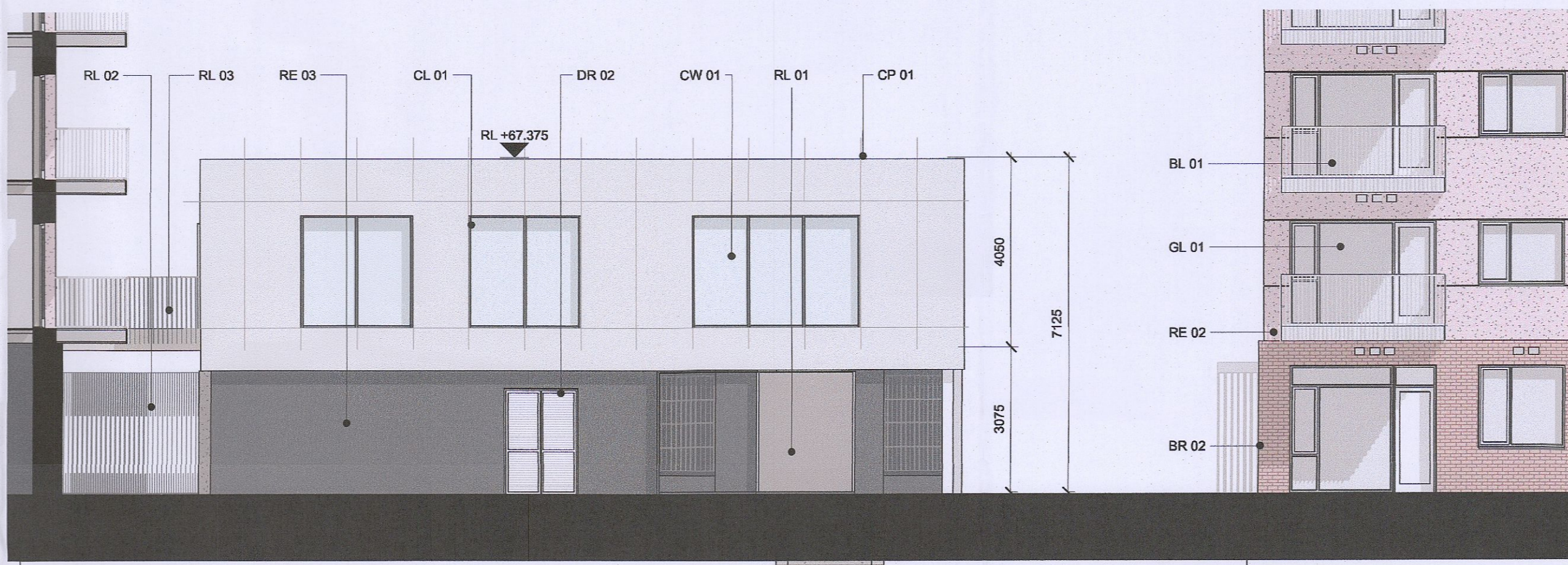
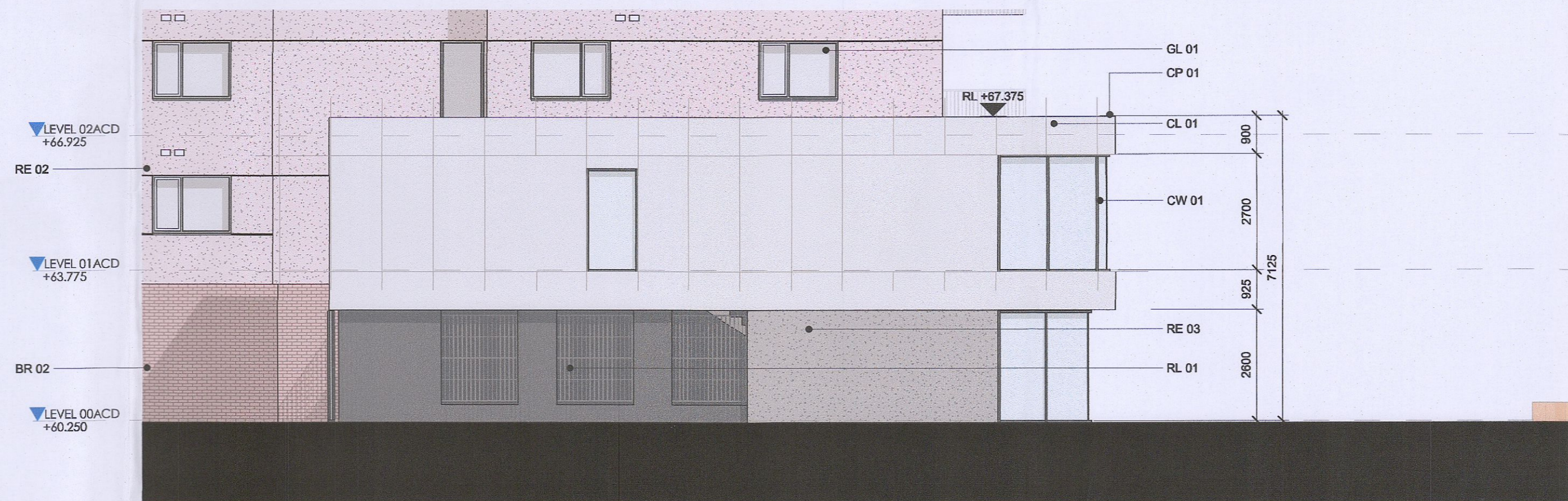


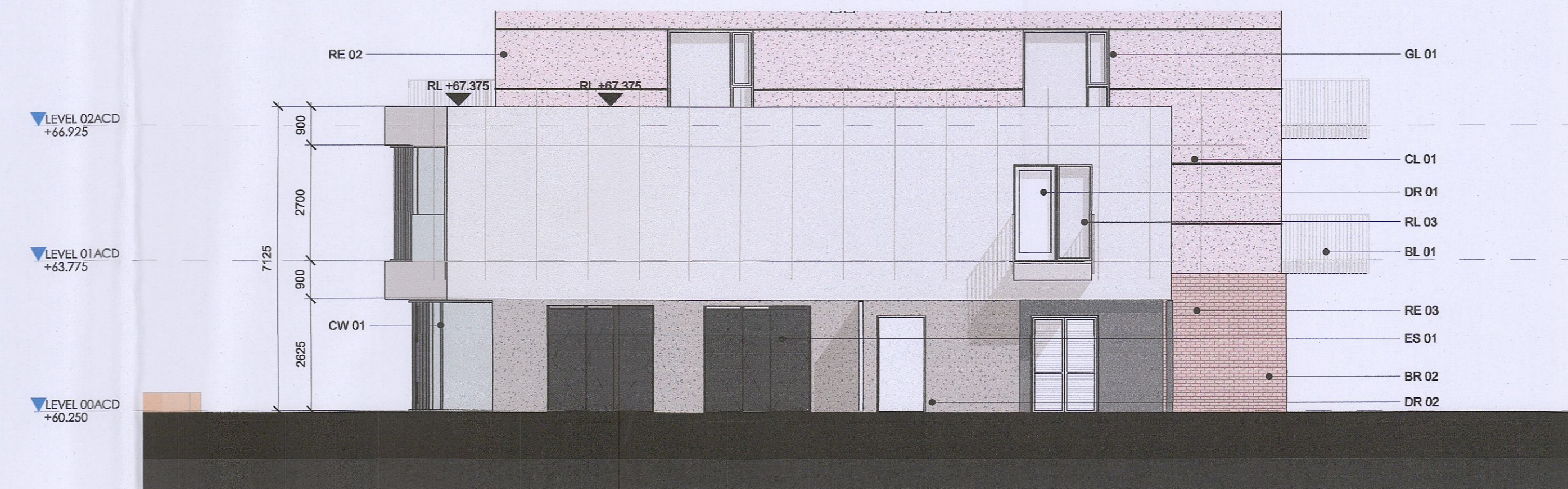
1 Block P West Elevation
1:100



2 Block P East Elevation
1:100



3 Block P North Elevation
1:100



4 Block P South Elevation
1:100

PAVILION DESIGN LAYOUT CHANGES DUE TO DESIGN DEVELOPMENT

NON RFI RELATED CHANGES

- STATUTORY CHANGES
- DESIGN CHANGES

GENERAL NOTES:

- 01 ALL INTERNAL APARTMENT LAYOUTS HAVE BEEN AMENDED DUE TO DESIGN DEVELOPMENT AND CO-ORDINATION WITH OTHER DISCIPLINES. THE INDIVIDUAL UNITS MAINTAIN THE SPACE REQUIREMENT GUIDELINES AS PER THE ORIGINAL PLANNING SUBMISSION
- 02 MINOR AMENDMENTS TO M&E AND SE LAYOUTS DUE TO DESIGN DEVELOPMENT & TO ACCOMMODATE COMPLIANCE WITH STATUTORY REQUIREMENTS
- 03 REDUCED PARAPET HEIGHT & FALL ARREST SYSTEM INTRODUCED TO BLOCKS A,C,D AND RESIDENT PAVILLION BUILDINGS DUE TO MAINTENANCE. PARAPET HEIGHT OF TOWER ELEMENT OF BLOCK C1 RETAINED AS PER ORIGINAL PLANNING APPLICATION

RFI 1 (a)

Block D North - Changes to Core entrance hall facing Great Western Way updated to accommodate new apartment type T.301_D revised apartment type T.102_D

RFI 1 (b)

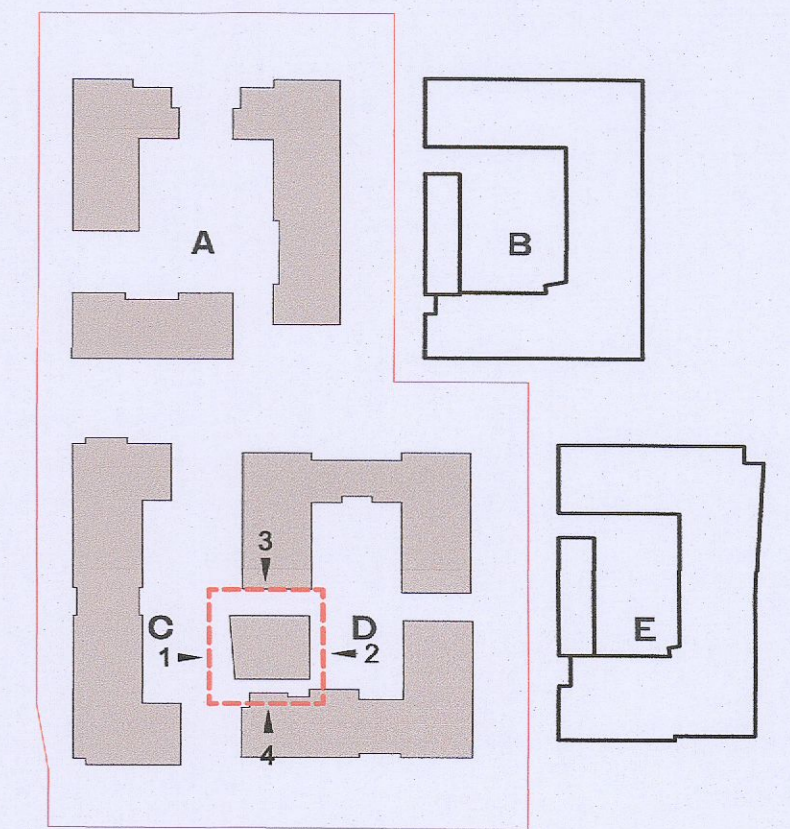
Block D South - Changes to apartment type T.201_D and T.202_D to overcome privacy/overlooking issues

RFI 2

Block D South - Changes to facade material to brick on the upper floor levels

 Red dash line indicates extent of amendments to address RFI 0723 dated 08 JUNE 2022

HJL Drawing Number on previously lodged planning application: SD222A/005
ADC3-HJL-ACD-ZZ-DR-A-P2020 Revision (P01)



ELEVATION MATERIAL LEGEND

- BE 01 - METALIC BALCONY SCREEN WITH PPC FINISH
- BL 01 - BALCONY SYSTEM WITH PPC METAL RAILING
- BL 02 - BALCONY SYSTEM WITH GLAZED BALUSTRADE
- BL 03 - SELECTED RAINSCREEN CLADDING
- BR 01 - SELECTED LIGHT RED COLOURED BRICK
- BR 02 - SELECTED DARK RED COLOURED BRICK
- BR 03 - SELECTED LIGHT GREY COLOURED BRICK
- BR 04 - SELECTED GLAZED BRICK
- BR 05 - ARCHITECTURAL BRICK FEATURE
- CL 01 - RAINSCREEN CLADDING
- CP 01 - PRESSED ALUMINIUM CAPPING WITH PPC FINISH
- CW 01 - SELECTED CURTAIN WALL GLAZING SYSTEM
- DR 01 - SELECTED GLAZED ENTRANCE DOOR AND SIGNAGE
- DR 02 - METAL DOOR WITH PPC FINISH
- ES 01 - ESB DOORS
- GA 01 - GLAZED ENTRANCE GATE
- GL 01 - SELECTED DOUBLE GLAZED WINDOW SYSTEM
- MS 01 - SELECTED MESH SCREENING
- RE 01 - LIGHT EXTERNAL INSULATED RENDER FINISH
- RE 02 - LIGHT RED EXTERNAL RENDER FINISH
- RE 03 - DARK EXTERNAL INSULATED RENDER FINISH
- RL 01 - PPC METAL ENCLOSURE TO BICYCLE STORE
- RL 02 - PPC METAL GATE
- RL 03 - PPC METAL RAILINGS
- AB 01 - AIRBRICK
- CA 01 - FAIRFACED RC CANOPY
- PS 01 - PERFORATED METAL SCREEN GATES
- RP 01 - RAIN WATER PIPES
- SG 01 - SHADOW GAP IN RENDERED FINISH

REV	DATE	DESCRIPTION	CHK	DRN
P02	06/06/2022	ISSUED FOR FURTHER INFORMATION	RJ	SEN
P01	08/04/2022	ISSUED FOR PLANNING	RJ	FM

STATUS CODE DESCRIPTION
SUITABLE FOR INFORMATION

CLIENT
QUINTAIN IRELAND LTD.

PROJECT
ADAMSTOWN STATION BLOCKS ACD

DRAWING
RESIDENT'S PAVILLION ELEVATIONS

PROJECT NUMBER	DATE	STATUS CODE:	DRAWING NUMBER	REVISION
950747	08/04/22	S2	ADC3-HJL-ACD-ZZ-DR-A-P2020	P02

Henry J Lyons

Architecture + Interiors
henryjlyons.com
+353 1 868 3333
info@henryjlyons.com
51-54 Pearse Street
Dublin D02 K466