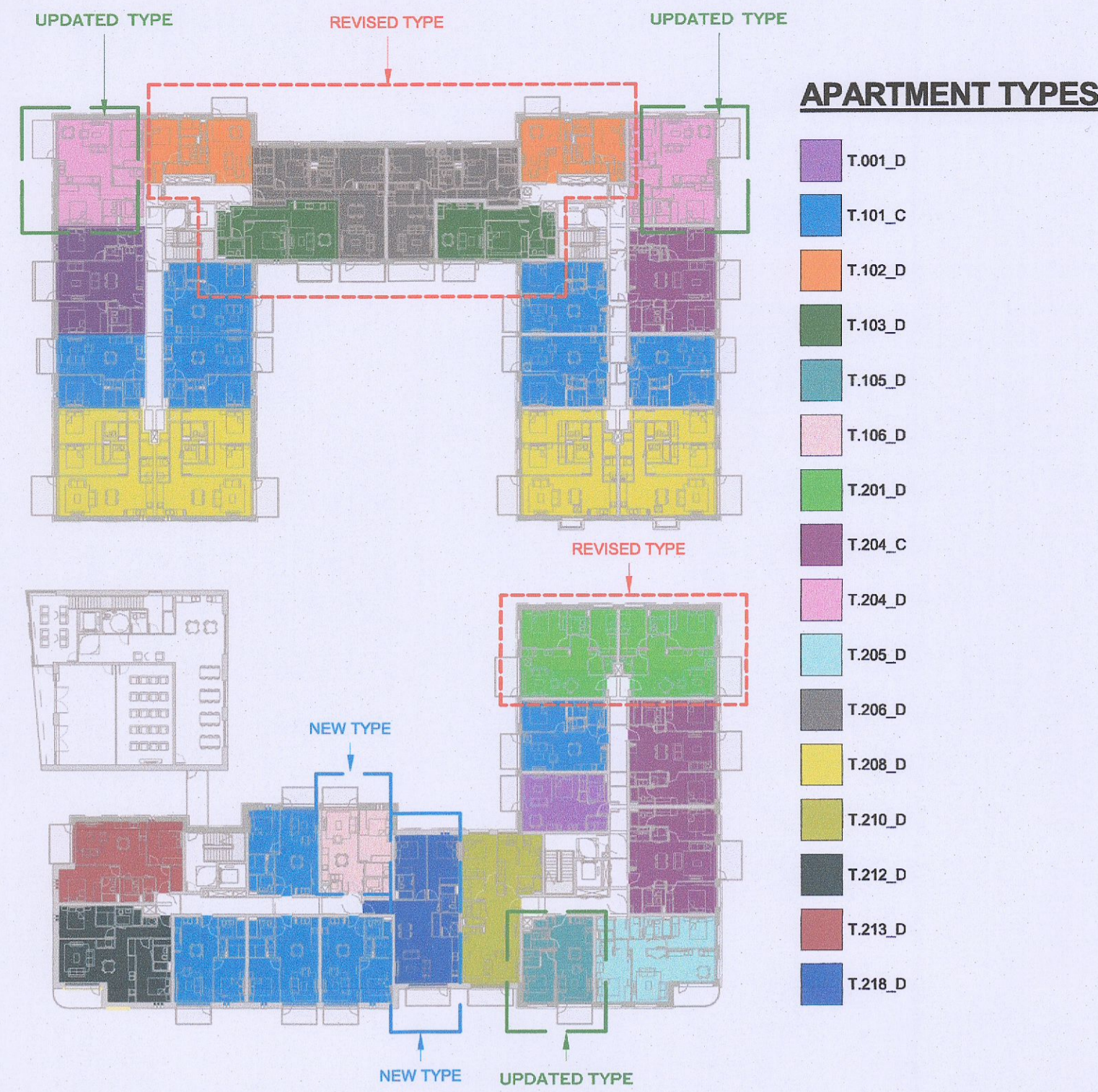
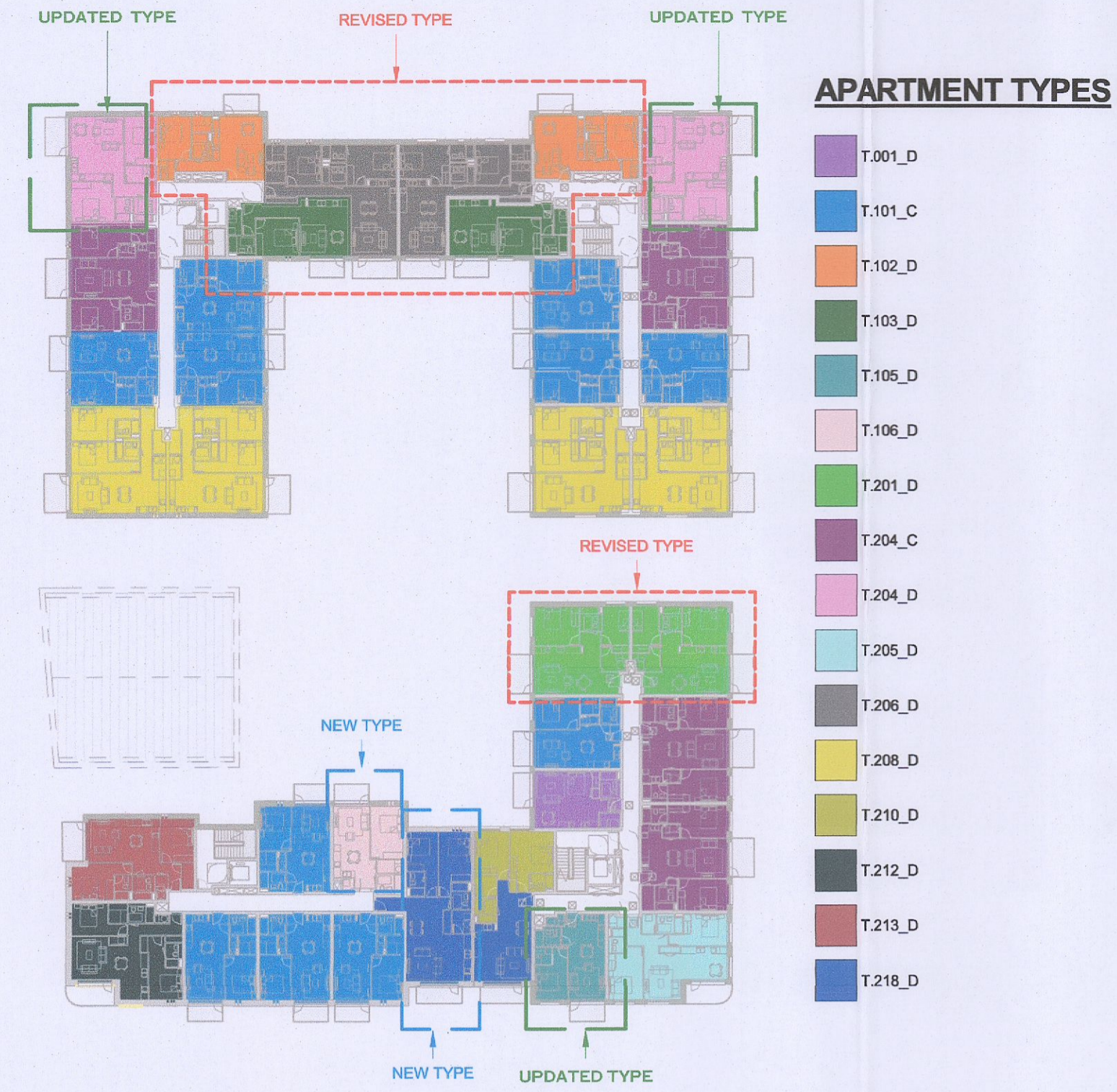


1 APT TYPES BLOCK D - LEVEL 00 - P  
1: 500



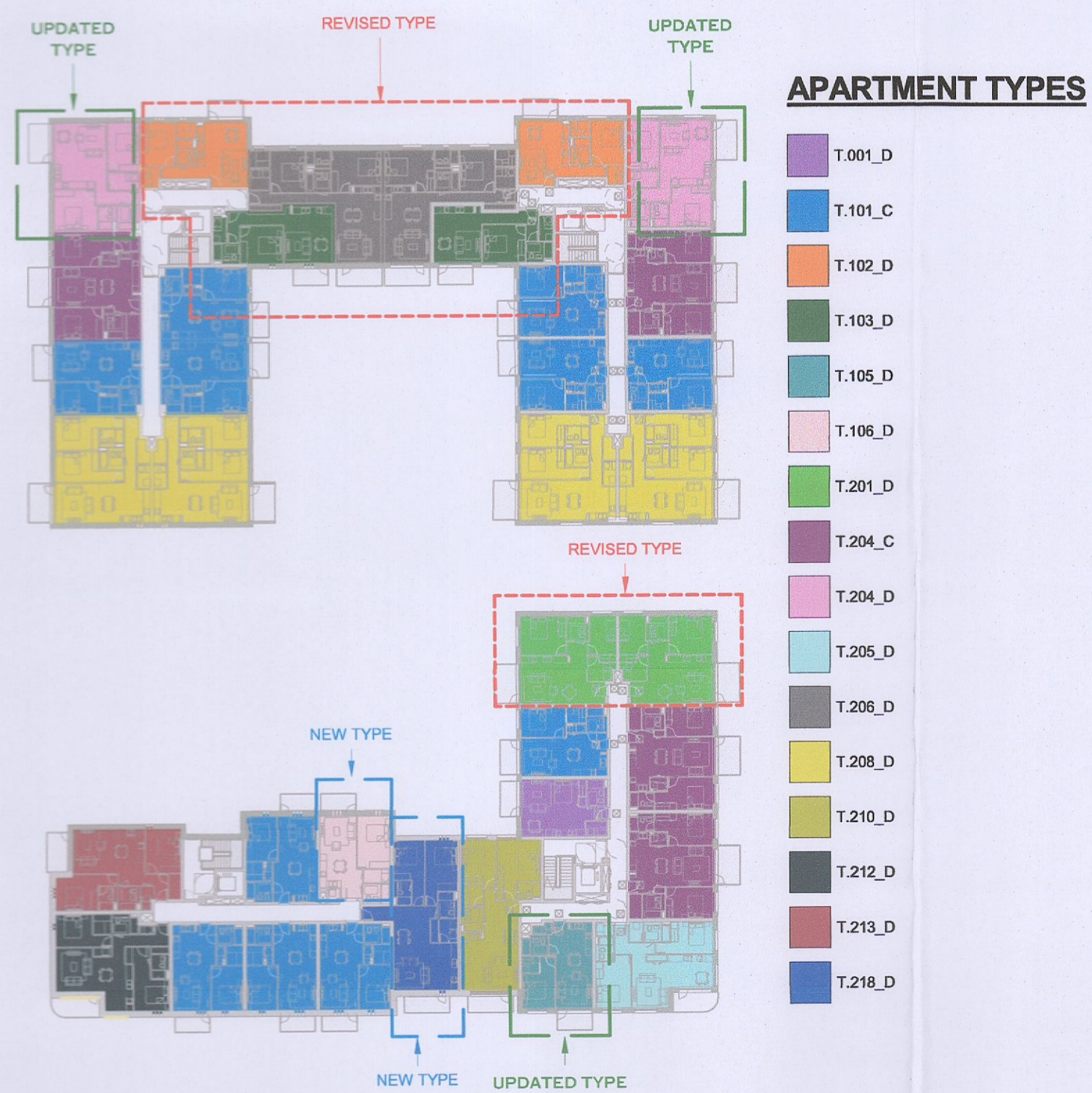
2 APT TYPES BLOCK D - LEVEL 01 - P  
1: 500



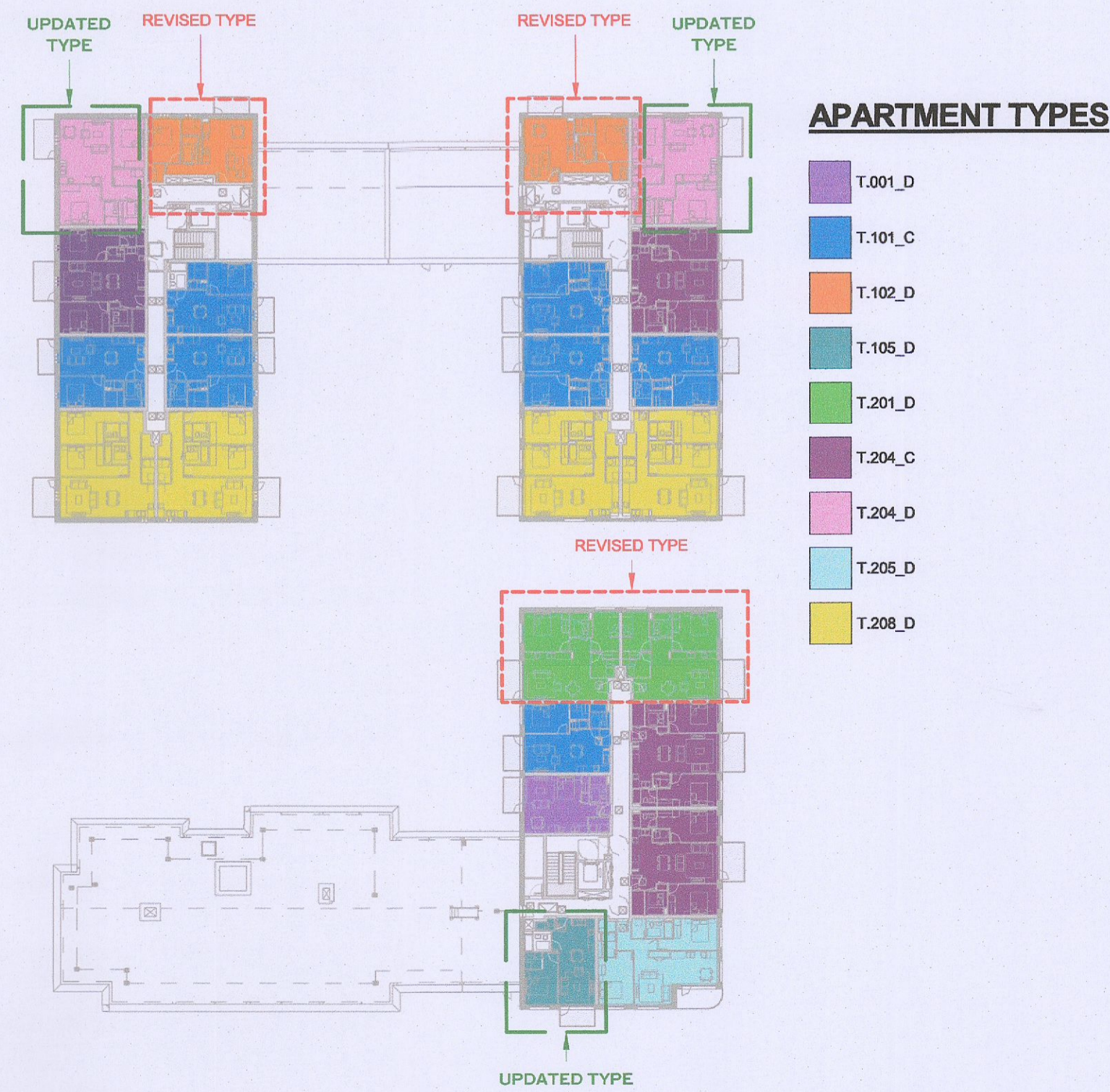
3 APT TYPES BLOCK D - LEVEL 02 - P  
1: 500

**APARTMENT TYPES Block D**

Count	APARTMENT TYPE		APARTMENT AREA	
	Unit Type	Type Name	Area sqm	Min. Area
5	1 ST	T.001_D	39.8	37.0
4	1 ST	T.002_D	41.8	37.0
1 ST: 9				
40	1B	T.101_C	49.5	45.0
3	1B	T.101_D	53.7	45.0
8	1B	T.102_D	50.7	45.0
6	1B	T.103_D	51.0	45.0
8	1B	T.104_D	49.5	45.0
4	1B	T.105_D	48.0	45.0
3	1B	T.106_D	48.5	45.0
1B: 72				
8	2B-3P	T.201_D	65.7	63.0
2	2B-3P	T.202_D	68.2	63.0
1	2B-3P	T.203_D	71.9	63.0
2B-3P: 11				
16	2B-4P	T.204_C	73.6	73.0
8	2B-4P	T.204_D	74.3	73.0
4	2B-4P	T.205_D	76.7	73.0
6	2B-4P	T.206_D	80.7	73.0
1	2B-4P	T.207_D	81.6	73.0
16	2B-4P	T.208_D	80.3	73.0
4	2B-4P	T.209_D	82.8	73.0
3	2B-4P	T.210_D	81.5	73.0
1	2B-4P	T.211_D	78.8	73.0
3	2B-4P	T.212_D	78.9	73.0
3	2B-4P	T.213_D	74.0	73.0
2	2B-4P	T.214_D	83.3	73.0
1	2B-4P	T.215_D	76.3	73.0
1	2B-4P	T.216_D	75.7	73.0
1	2B-4P	T.217_D	85.2	73.0
3	2B-4P	T.218_D	82.4	73.0
2B-4P: 73				
2	3B	T.301_D	97.5	90.0
3B: 2				
Grand total: 167				



4 APT TYPES BLOCK D - LEVEL 03 - P  
1: 500



5 APT TYPES BLOCK D - LEVEL 04 - P  
1: 500

- NON RFI RELATED CHANGES**
- STATUTORY CHANGES
  - DESIGN CHANGES

**GENERAL NOTES:**

01 ALL INTERNAL APARTMENT LAYOUTS HAVE BEEN AMENDED DUE TO DESIGN DEVELOPMENT AND CO-ORDINATION WITH OTHER DISCIPLINES. THE INDIVIDUAL UNITS MAINTAIN THE SPACE REQUIREMENT GUIDELINES AS PER THE ORIGINAL PLANNING SUBMISSION

02 MINOR AMENDMENTS TO M&E AND SE LAYOUTS DUE TO DESIGN DEVELOPMENT & TO ACCOMMODATE COMPLIANCE WITH STATUTORY REQUIREMENTS

03 REDUCED PARAPET HEIGHT & FALL ARREST SYSTEM INTRODUCED TO BLOCKS A,C,D AND RESIDENT PAVILLION BUILDINGS DUE TO MAINTENANCE. PARAPET HEIGHT OF TOWER ELEMENT OF BLOCK C1 RETAINED AS PER ORIGINAL PLANNING APPLICATION

- RFI 1 (a)**
- Block D North - Changes to Core entrance hall facing Great Western Way updated to accommodate new apartment type T.301\_D revised apartment type T.102\_D
- RFI 1 (b)**
- Block D South - Changes to apartment type T.201\_D and T.202\_D to overcome privacy/overlooking issues
- RFI 2**
- Block D South - Changes to facade material to brick on the upper floor levels

Red dash line indicates extent of amendments to address RFI 0723 dated 08 JUNE 2022

HJL Drawing Number on previously lodged planning application: SDZ22A/0005  
**ADC3-HJL-ACD-ZZ-DR-A-P8000D Revision (PO1)**

REV	DATE	DESCRIPTION	CRJ	FM	DRN
P02	06/09/2022	ISSUED FOR FURTHER INFORMATION	RJ	SEN	
P01	08/04/2022	ISSUED FOR PLANNING	RJ	FM	

STATUS CODE DESCRIPTION  
**ISSUED FOR FURTHER INFORMATION**

CLIENT  
**QUINTAIN IRELAND LTD.**

PROJECT  
**ADAMSTOWN STATION BLOCKS ACD**

DRAWING  
**APARTMENT TYPES KEY PLAN  
BLOCK D**

PROJECT NUMBER	DATE	SCALE@ A1:	DRAWN/CHECKED:
950747	08/04/22	As indicated	SEN/RJ
STATUS CODE:	DRAWING NUMBER	REVISION	
A1	ADC3-HJL-ACD-ZZ-DR-A-P8000D	P02	

**Henry J Lyons**