

1 T.101_C
1:100

2 T.102_C
1:100

3 T.103_C
1:100

4 T.104_C
1:100

5 T.105_C
1:100

T.101_C SPACE REQUIREMENTS									
Apartment Area	Required Apartment Area	Required Area Met	Kitchen - Living Area	Required Kitchen - Living Area	Required Area Met	Total Bedroom Area	Required Total Bedroom Area	Required Area Met	Heat Pump Area
45.5 m ²	45.0 m ²	Yes	28.2 m ²	23.0 m ²	Yes	11.4 m ²	11.4 m ²	Yes	0.9 m ²

T.102_C SPACE REQUIREMENTS									
Apartment Area	Required Apartment Area	Required Area Met	Kitchen - Living Area	Required Kitchen - Living Area	Required Area Met	Total Bedroom Area	Required Total Bedroom Area	Required Area Met	Heat Pump Area
54.3 m ²	45.0 m ²	Yes	28.1 m ²	23.0 m ²	Yes	14.3 m ²	11.4 m ²	Yes	0.9 m ²

T.103_C SPACE REQUIREMENTS									
Apartment Area	Required Apartment Area	Required Area Met	Kitchen - Living Area	Required Kitchen - Living Area	Required Area Met	Total Bedroom Area	Required Total Bedroom Area	Required Area Met	Heat Pump Area
49.7 m ²	45.0 m ²	Yes	30.2 m ²	23.0 m ²	Yes	11.5 m ²	11.4 m ²	Yes	0.9 m ²

T.104_C SPACE REQUIREMENTS									
Apartment Area	Required Apartment Area	Required Area Met	Kitchen - Living Area	Required Kitchen - Living Area	Required Area Met	Total Bedroom Area	Required Total Bedroom Area	Required Area Met	Heat Pump Area
51.0 m ²	45.0 m ²	Yes	28.2 m ²	23.0 m ²	Yes	11.4 m ²	11.4 m ²	Yes	0.9 m ²

T.105_C SPACE REQUIREMENTS									
Apartment Area	Required Apartment Area	Required Area Met	Kitchen - Living Area	Required Kitchen - Living Area	Required Area Met	Total Bedroom Area	Required Total Bedroom Area	Required Area Met	Heat Pump Area
50.1 m ²	45.0 m ²	Yes	28.0 m ²	23.0 m ²	Yes	11.7 m ²	11.4 m ²	Yes	0.9 m ²

APARTMENT TYPES 1B

Count	Unit Type	Type Name	Block	Area sqm	Min. Area
5	1 ST	T.001 D	D	39.8	37.0
4	1 ST	T.002 D	D	41.8	37.0

1 ST: 9

Count	Unit Type	Type Name	Block	Area sqm	Min. Area
33	1B	T.101 A	A	50.0	45.0
4	1B	T.101 A	C	50.0	45.0
20	1B	T.101 C	C	49.5	45.0
40	1B	T.101 C	D	49.5	45.0
3	1B	T.101 D	D	53.7	45.0
2	1B	T.102 A	A	50.0	45.0
1	1B	T.102 C	C	54.3	45.0
6	1B	T.102 D	D	50.7	45.0
6	1B	T.103 A	A	48.2	45.0
8	1B	T.103 C	C	49.7	45.0
6	1B	T.103 D	D	51.0	45.0
4	1B	T.104 A	A	50.0	45.0
9	1B	T.104 C	C	51.0	45.0
6	1B	T.104 D	D	49.5	45.0
6	1B	T.105 A	A	50.2	45.0
6	1B	T.105 C	C	50.1	45.0
4	1B	T.105 D	D	48.0	45.0
4	1B	T.106 A	A	48.4	45.0
8	1B	T.106 C	C	50.0	45.0
3	1B	T.106 D	D	48.5	45.0
8	1B	T.107 A	A	50.0	45.0
1	1B	T.107 C	C	50.0	45.0
1	1B	T.108 A	A	53.5	45.0
1	1B	T.108 C	C	49.7	45.0
2	1B	T.109 A	A	47.3	45.0
2	1B	T.110 A	A	53.8	45.0

1B: 202
Grand total: 211

Red dash line indicates extent of amendments to address RFI 0723 dated 08 JUNE 2022

NON RFI RELATED CHANGES

- STATUTORY CHANGES
- DESIGN CHANGES

GENERAL NOTES:
O1 ALL INTERNAL APARTMENT LAYOUTS HAVE BEEN AMENDED DUE TO DESIGN DEVELOPMENT AND CO-ORDINATION WITH OTHER DISCIPLINES. THE INDIVIDUAL UNITS MAINTAIN THE SPACE REQUIREMENT GUIDELINES AS PER THE ORIGINAL PLANNING SUBMISSION
O2 MINOR AMENDMENTS TO M&E AND SE LAYOUTS DUE TO DESIGN DEVELOPMENT & TO ACCOMMODATE COMPLIANCE WITH STATUTORY REQUIREMENTS
O3 REDUCED PARAPET HEIGHT & FALL ARREST SYSTEM INTRODUCED TO BLOCKS A,C,D AND RESIDENT PAVILLION BUILDINGS DUE TO MAINTENANCE. PARAPET HEIGHT OF TOWER ELEMENT OF BLOCK O1 RETAINED AS PER ORIGINAL PLANNING APPLICATION

HJL Drawing Number on previously lodged planning application: SD222A/0005
ADC3-HJL-ACD-ZZ-DR-A-P8002 Revision (P01)

6 T.106_C
1:100

7 T.107_C
1:100

8 T.108_C
1:100

9 T.101_D
1:100

T.106_C SPACE REQUIREMENTS									
Apartment Area	Required Apartment Area	Required Area Met	Kitchen - Living Area	Required Kitchen - Living Area	Required Area Met	Total Bedroom Area	Required Total Bedroom Area	Required Area Met	Heat Pump Area
50.0 m ²	45.0 m ²	Yes	27.5 m ²	23.0 m ²	Yes	12.5 m ²	11.4 m ²	Yes	1.0 m ²

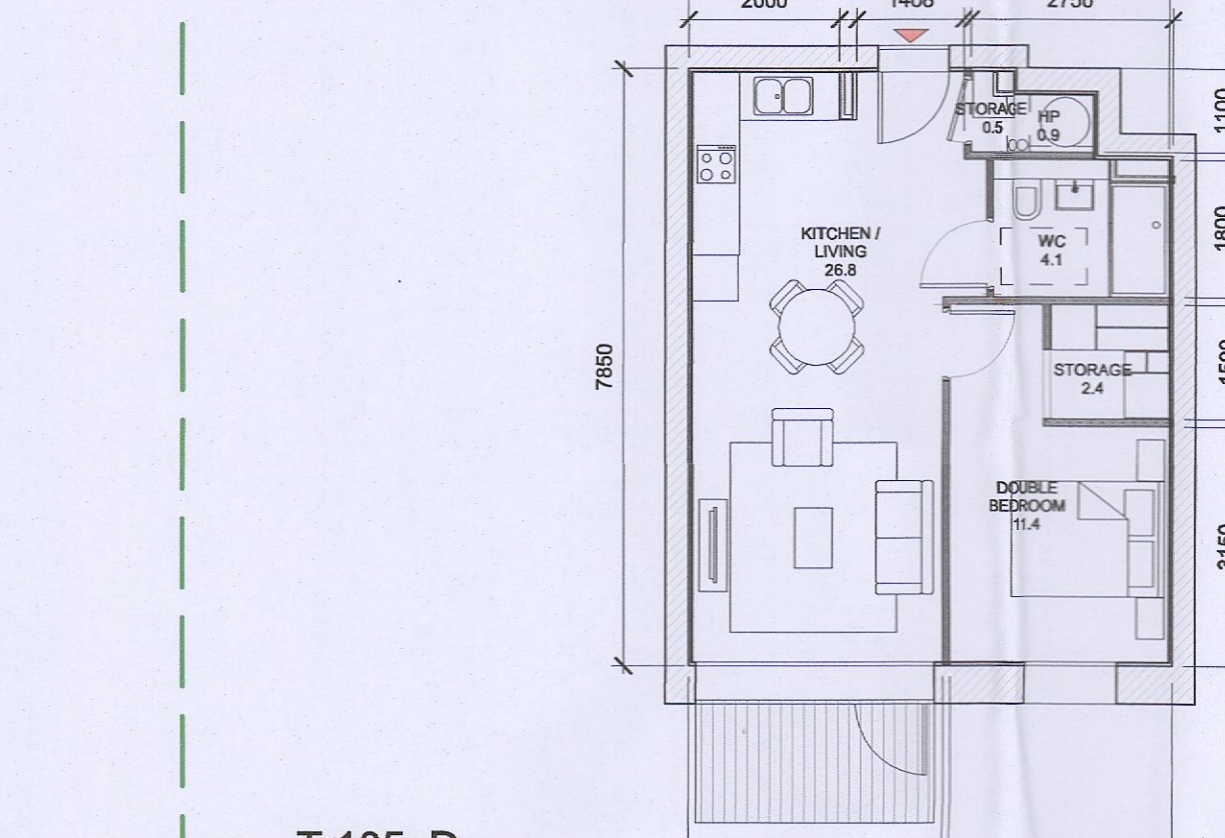
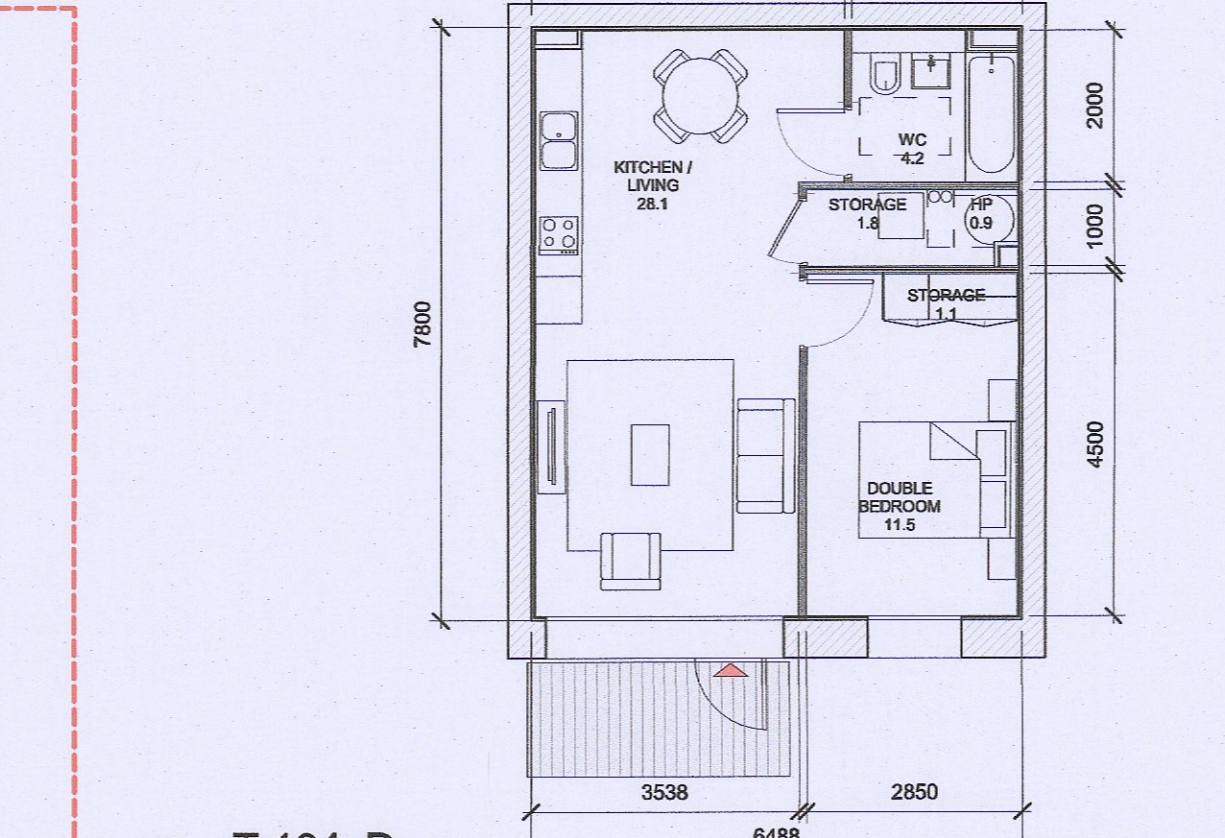
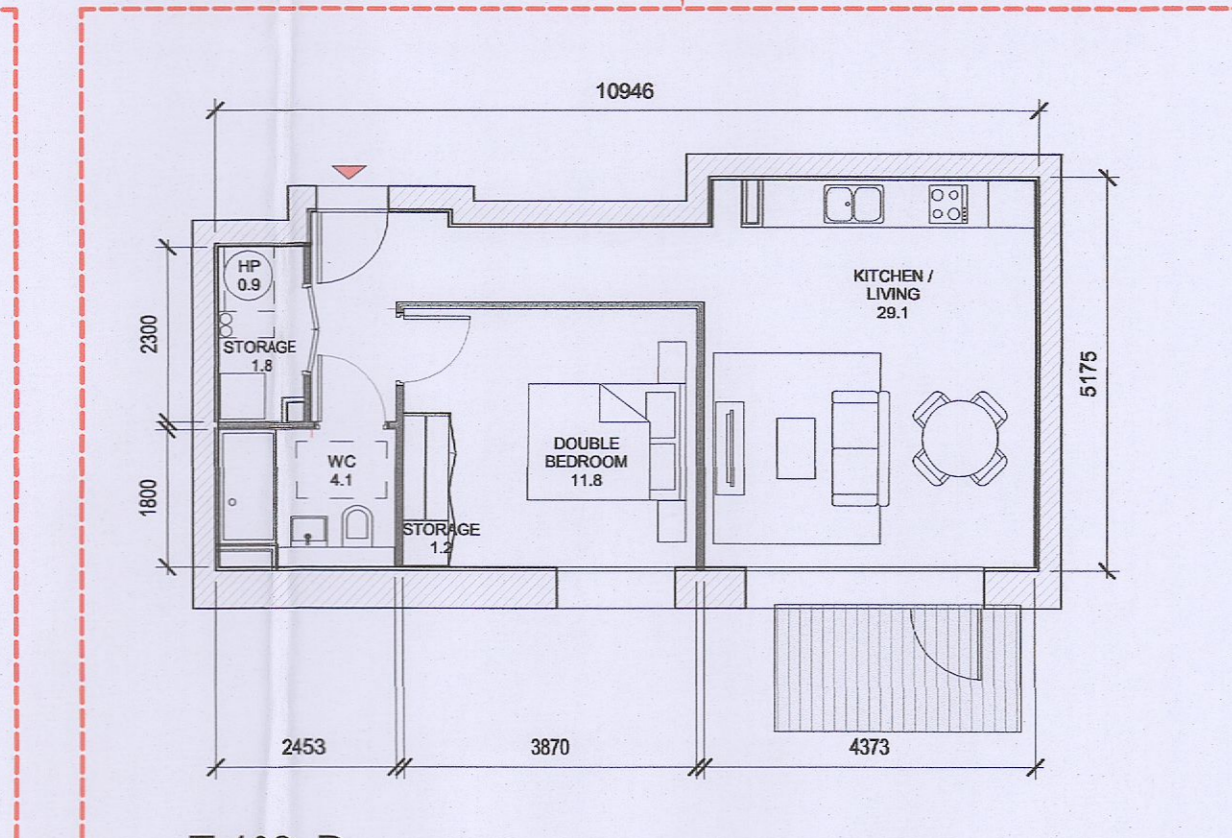
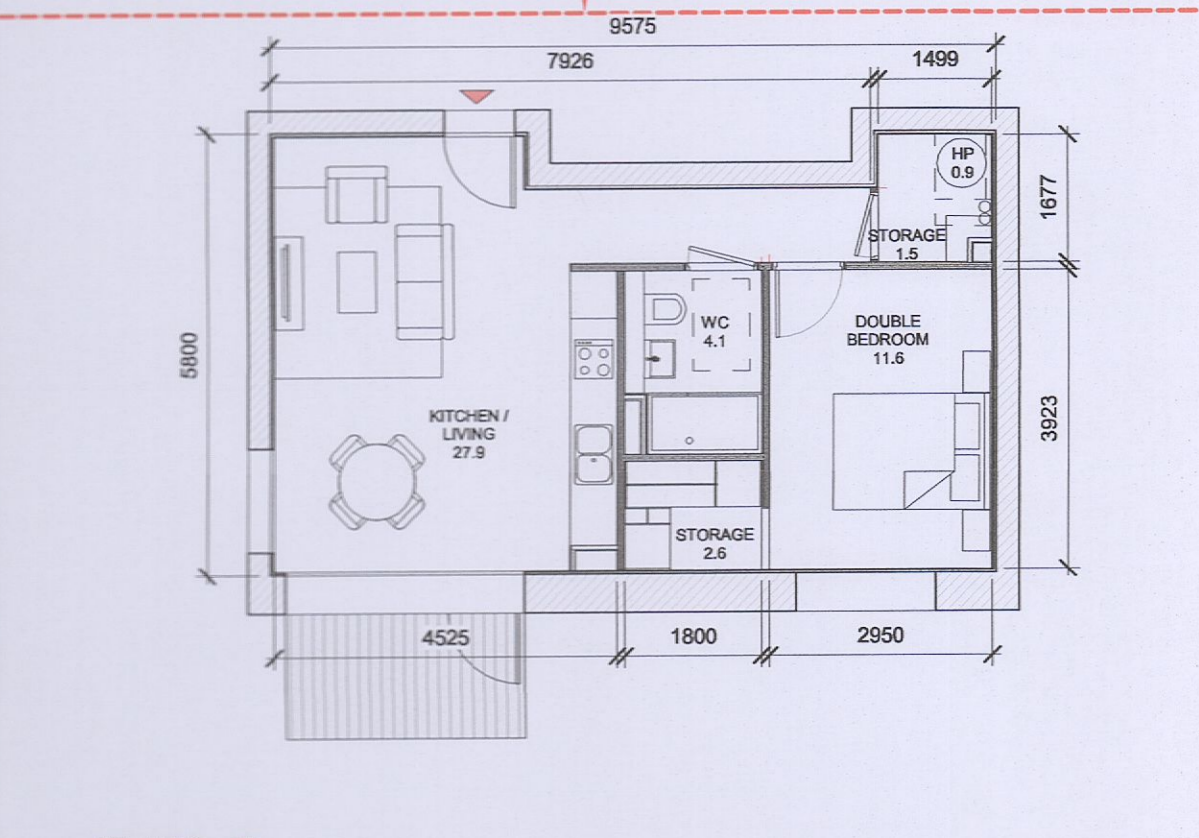
T.107_C SPACE REQUIREMENTS									
Apartment Area	Required Apartment Area	Required Area Met	Kitchen - Living Area	Required Kitchen - Living Area	Required Area Met	Total Bedroom Area	Required Total Bedroom Area	Required Area Met	Heat Pump Area
60.0 m ²	45.0 m ²	Yes	27.0 m ²	23.0 m ²	Yes	11.5 m ²	11.4 m ²	Yes	0.9 m ²

T.108_C SPACE REQUIREMENTS									
Apartment Area	Required Apartment Area	Required Area Met	Kitchen - Living Area	Required Kitchen - Living Area	Required Area Met	Total Bedroom Area	Required Total Bedroom Area	Required Area Met	Heat Pump Area
48.7 m ²	45.0 m ²	Yes	29.3 m ²	23.0 m ²	Yes	11.4 m ²	11.4 m ²	Yes	0.9 m ²

T.101_D SPACE REQUIREMENTS									
Apartment Area	Required Apartment Area	Required Area Met	Kitchen - Living Area	Required Kitchen - Living Area	Required Area Met	Total Bedroom Area	Required Total Bedroom Area	Required Area Met	Heat Pump Area
53.7 m ²	45.0 m ²	Yes	28.3 m ²	23.0 m ²	Yes	13.7 m ²	11.4 m ²	Yes	0.9 m ²

REVISED TYPE

REVISED TYPE



10 T.102_D
1:100

11 T.103_D
1:100

12 T.104_D
1:100

13 T.105_D
1:100

T.102_D SPACE REQUIREMENTS									
Apartment Area	Required Apartment Area	Required Area Met	Kitchen - Living Area	Required Kitchen - Living Area	Required Area Met	Total Bedroom Area	Required Total Bedroom Area	Required Area Met	Heat Pump Area
50.7 m ²	45.0 m ²	Yes	27.9 m ²	23.0 m ²	Yes	11.6 m ²	11.4 m ²	Yes	0.9 m ²

T.103_D SPACE REQUIREMENTS									
Apartment Area	Required Apartment Area	Required Area Met	Kitchen - Living Area	Required Kitchen - Living Area	Required Area Met	Total Bedroom Area	Required Total Bedroom Area	Required Area Met	Heat Pump Area
51.0 m ²	45.0 m ²	Yes	28.1 m ²	23.0 m ²	Yes	11.8 m ²	11.4 m ²	Yes	0.9 m ²

T.104_D SPACE REQUIREMENTS									
Apartment Area	Required Apartment Area	Required Area Met	Kitchen - Living Area	Required Kitchen - Living Area	Required Area Met	Total Bedroom Area	Required Total Bedroom Area	Required Area Met	Heat Pump Area
49.5 m ²	45.0 m ²	Yes	28.1 m ²	23.0 m ²	Yes	11.5 m ²	11.4 m ²	Yes	0.9 m ²

T.105_D SPACE REQUIREMENTS									
Apartment Area	Required Apartment Area	Required Area Met	Kitchen - Living Area	Required Kitchen - Living Area	Required Area Met	Total Bedroom Area	Required Total Bedroom Area	Required Area Met	Heat Pump Area
48.0 m ²	45.0 m ²	Yes	26.8 m ²	23.0 m ²	Yes	11.4 m ²	11.4 m ²	Yes	0.9 m ²

UPDATED TYPE

PO2	08/09/2022	ISSUED FOR FURTHER INFORMATION	RJ	SEN
PO1	08/04/2022	ISSUED FOR PLANNING	RJ	FM
REV	DATE	DESCRIPTION	CKH	DRN

STATUS CODE DESCRIPTION
ISSUED FOR FURTHER INFORMATION

CLIENT
QUINTAIN IRELAND LTD.

PROJECT
ADAMSTOWN STATION BLOCKS ACD

DRAWING
APARTMENT TYPES Sheet 2
1 & 2B Apartments

PROJECT NUMBER
950747

DATE
08/04/22

SCALE@ A1:
As Indicated

DRAWN/CHECKED:
SEN/RJ

STATUS CODE: DRAWING NUMBER REVISION
A1 ADC3-HJL-ACD-ZZ-DR-A-P8002 P02

Henry J Lyons