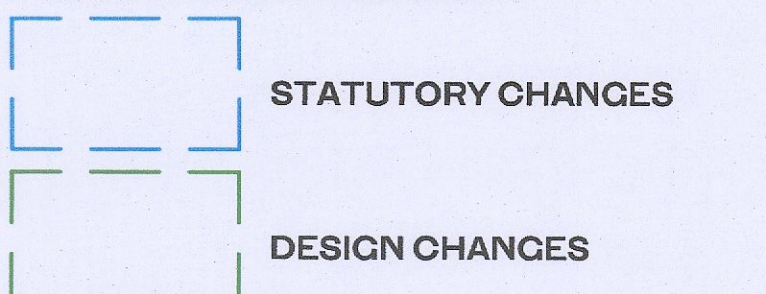


ALL DIMENSIONS TO BE CHECKED ON SITE
NO DIMENSIONS TO BE SCALED FROM THIS DRAWING
DRAWING IS TO BE READ IN CONJUNCTION WITH RELEVANT CONSULTANTS DRAWINGS

APARTMENT TYPES 2B						
Count	APARTMENT TYPE		LOCATION		APARTMENT AREA	
	Unit Type	Type Name	Block	Area sqm	Min. Area	
4	2B-3P	T.201 C	C	70.6	63.0	
8	2B-3P	T.201 D	D	65.7	63.0	
1	2B-3P	T.202 C	C	63.2	63.0	
2	2B-3P	T.202 D	D	68.2	63.0	
1	2B-3P	T.203 D	D	71.9	63.0	

2	2B-4P	T.201 A	A	73.2	73.0	
4	2B-4P	T.202 A	A	74.0	73.0	
4	2B-4P	T.203 A	A	73.8	73.0	
13	2B-4P	T.203 C	C	75.8	73.0	
8	2B-4P	T.204 A	A	73.7	73.0	
16	2B-4P	T.204 C	C	73.6	73.0	
16	2B-4P	T.204 D	D	73.6	73.0	
8	2B-4P	T.204 D	D	74.3	73.0	
8	2B-4P	T.205 A	A	81.2	73.0	
4	2B-4P	T.205 C	C	75.4	73.0	
4	2B-4P	T.205 D	D	76.7	73.0	
27	2B-4P	T.206 A	A	75.9	73.0	
1	2B-4P	T.206 C	C	73.3	73.0	
6	2B-4P	T.206 D	D	80.7	73.0	
8	2B-4P	T.207 A	A	74.9	73.0	
16	2B-4P	T.207 C	C	73.3	73.0	
1	2B-4P	T.207 D	D	81.6	73.0	
2	2B-4P	T.208 A	A	77.2	73.0	
5	2B-4P	T.208 C	C	73.6	73.0	
16	2B-4P	T.208 D	D	80.3	73.0	
2	2B-4P	T.209 A	A	73.4	73.0	
4	2B-4P	T.209 D	D	82.8	73.0	
2	2B-4P	T.210 A	A	78.0	73.0	
3	2B-4P	T.210 D	D	81.5	73.0	
1	2B-4P	T.211 D	D	78.8	73.0	
3	2B-4P	T.212 D	D	78.9	73.0	
3	2B-4P	T.213 D	D	74.0	73.0	
2	2B-4P	T.214 D	D	83.3	73.0	
1	2B-4P	T.215 D	D	76.3	73.0	
1	2B-4P	T.216 D	D	75.7	73.0	
1	2B-4P	T.217 D	D	85.2	73.0	
3	2B-4P	T.218 D	D	82.4	73.0	

2B-4P: 195
Grand total: 211
NON RFI RELATED CHANGES



GENERAL NOTES:
O1 ALL INTERNAL APARTMENT LAYOUTS HAVE BEEN AMENDED DUE TO DESIGN DEVELOPMENT AND CO-ORDINATION WITH OTHER DISCIPLINES. THE INDIVIDUAL UNITS MAINTAIN THE SPACE REQUIREMENT GUIDELINES AS PER THE ORIGINAL PLANNING SUBMISSION
O2 MINOR AMENDMENTS TO M&E AND SE LAYOUTS DUE TO DESIGN DEVELOPMENT & TO ACCOMMODATE COMPLIANCE WITH STATUTORY REQUIREMENTS
O3 REDUCED PARAPET HEIGHT & FALL ARREST SYSTEM INTRODUCED TO BLOCKS A,C,D AND RESIDENT PAVILION BUILDINGS DUE TO MAINTENANCE. PARAPET HEIGHT OF TOWER ELEMENT OF BLOCK C1 RETAINED AS PER ORIGINAL PLANNING APPLICATION

REV	DATE	DESCRIPTION	BY	CHK
P02	06/02/2022	ISSUED FOR FURTHER INFORMATION	RJ	SEN
P01	09/04/2022	ISSUED FOR PLANNING	RJ	FM
REV	DATE	DESCRIPTION	CHK	DRN

STATUS CODE DESCRIPTION
ISSUED FOR FURTHER INFORMATION

CLIENT
QUINTAIN IRELAND LTD.

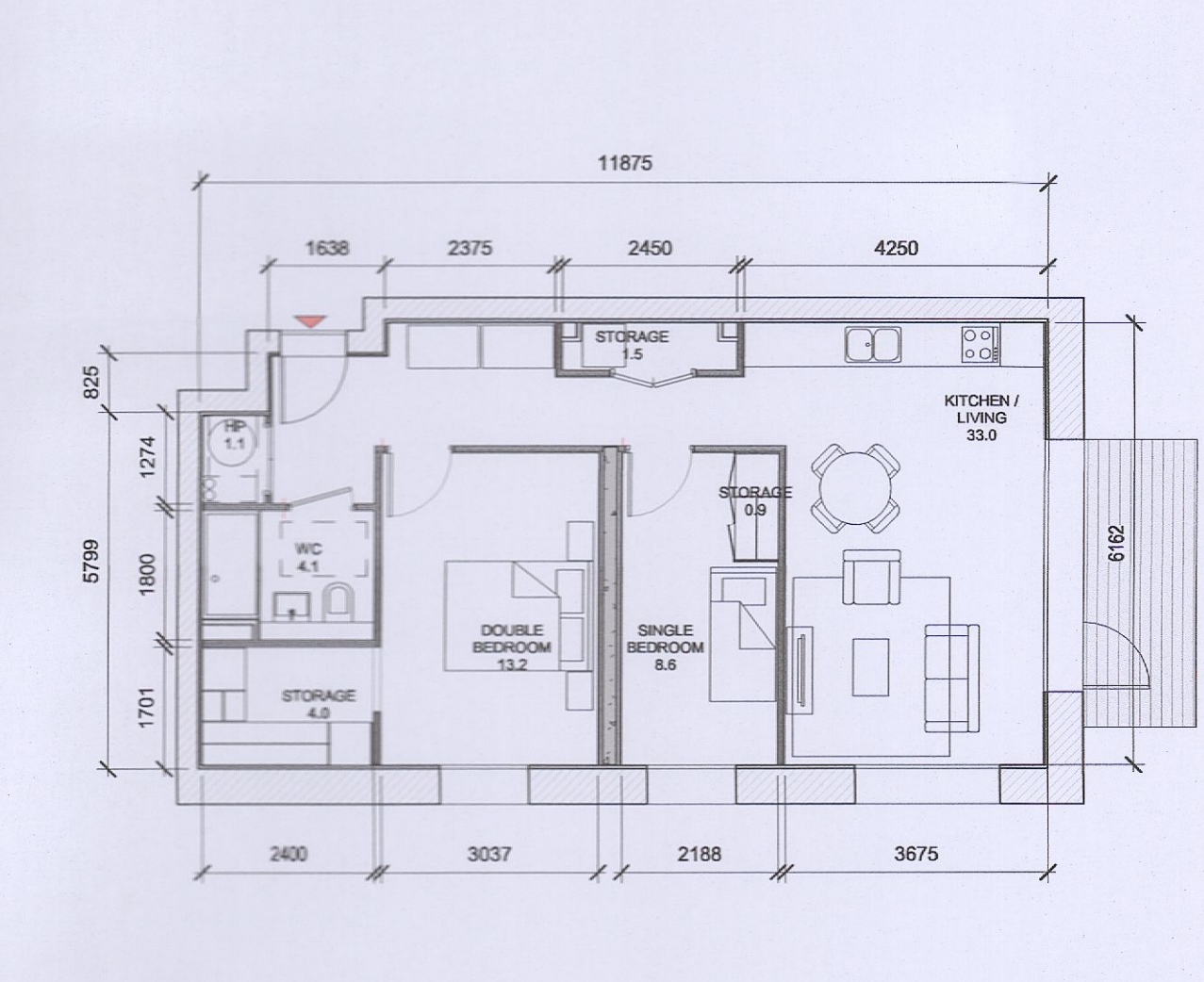
PROJECT
ADAMSTOWN STATION BLOCKS ACD

DRAWING
**APARTMENT TYPES Sheet 3
2B Apartments**

PROJECT NUMBER: 950747 DATE: 08/04/22
SCALE@ A1: As Indicated DRAWING CHECKED: SEN RJ

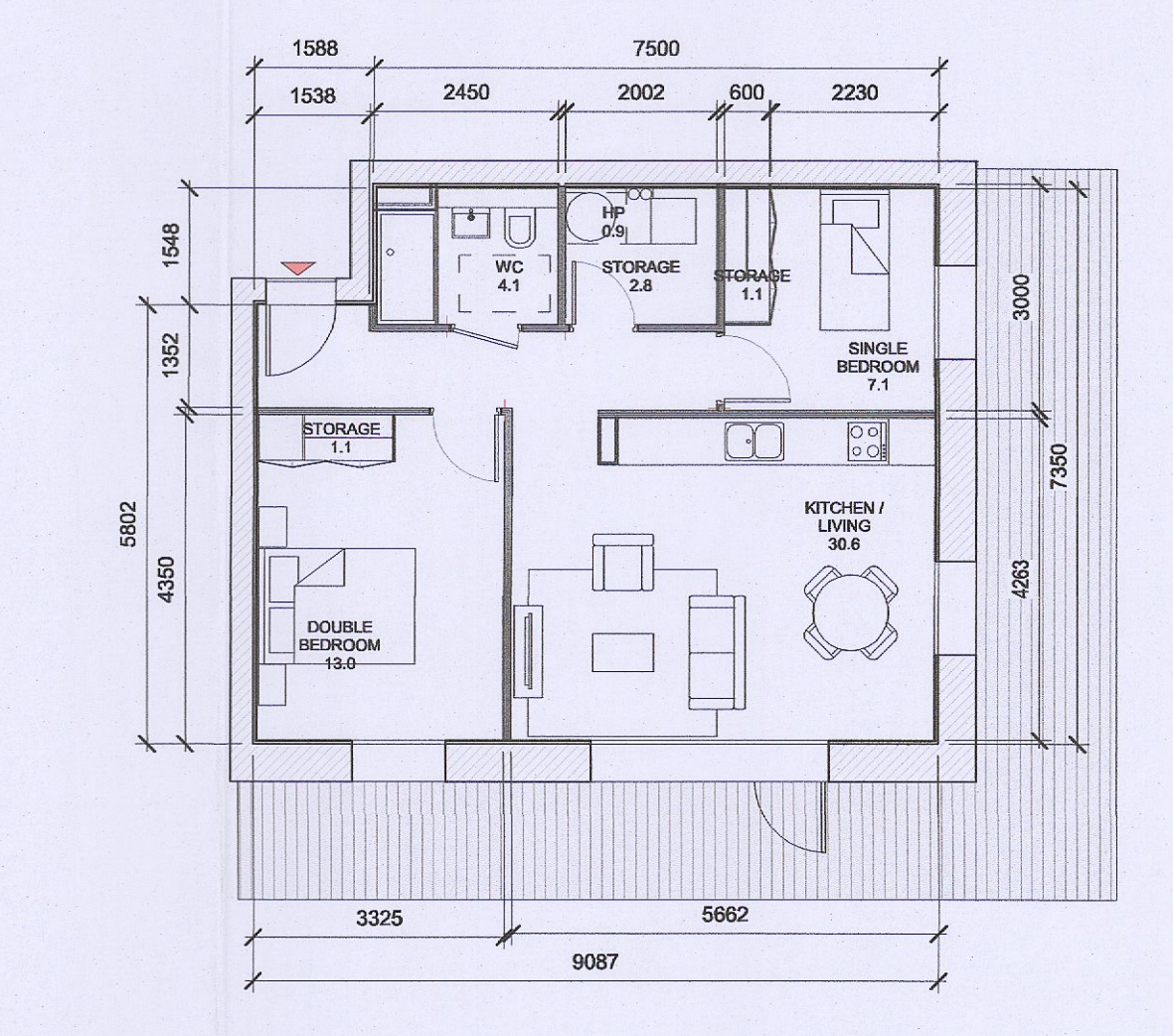
STATUS CODE: DRAWING NUMBER: A1 ACD3-HJL-ACD-ZZ-DR-A-P8003 REVISION: P02

Henry J Lyons
Architecture + Interiors
henryjlyons.com +353 1 888 3333 info@henryjlyons.com 51-54 Pearse Street Dublin D02 X466



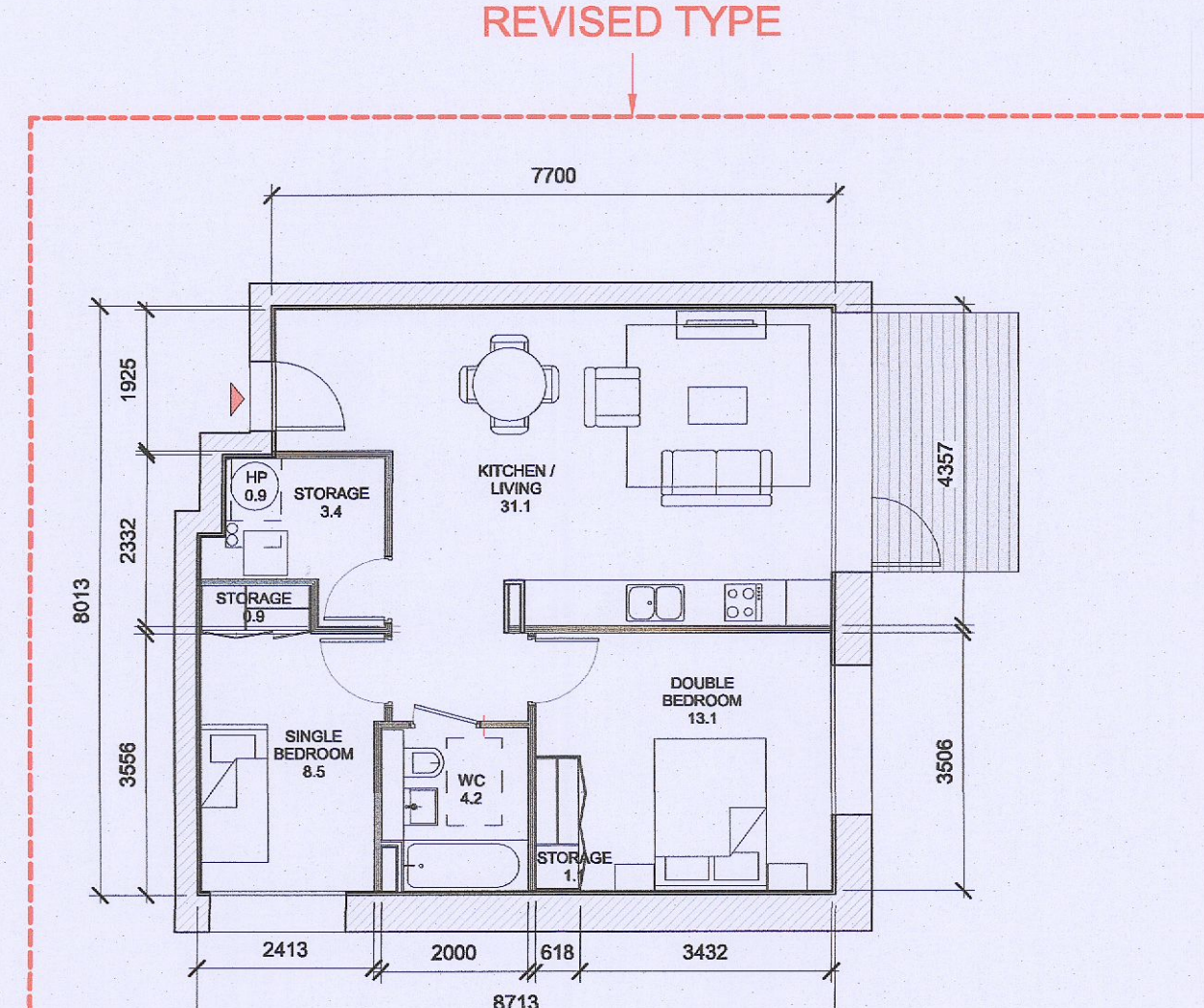
1 T.201 C
1: 100

T.201_C SPACE REQUIREMENTS											
Apartment Area	Required Apartment Area	Required Area Met	Kitchen - Living Area	Required Kitchen - Living Area	Required Area Met	Total Bedroom Area	Required Total Bedroom Area	Required Area Met	Total Storage Area	Required Total Storage Area	Heat Pump Area
70.6 m²	63.0 m²	Yes	33.0 m²	28.0 m²	Yes	21.8 m²	20.1 m²	Yes	6.5 m²	5.0 m²	Yes



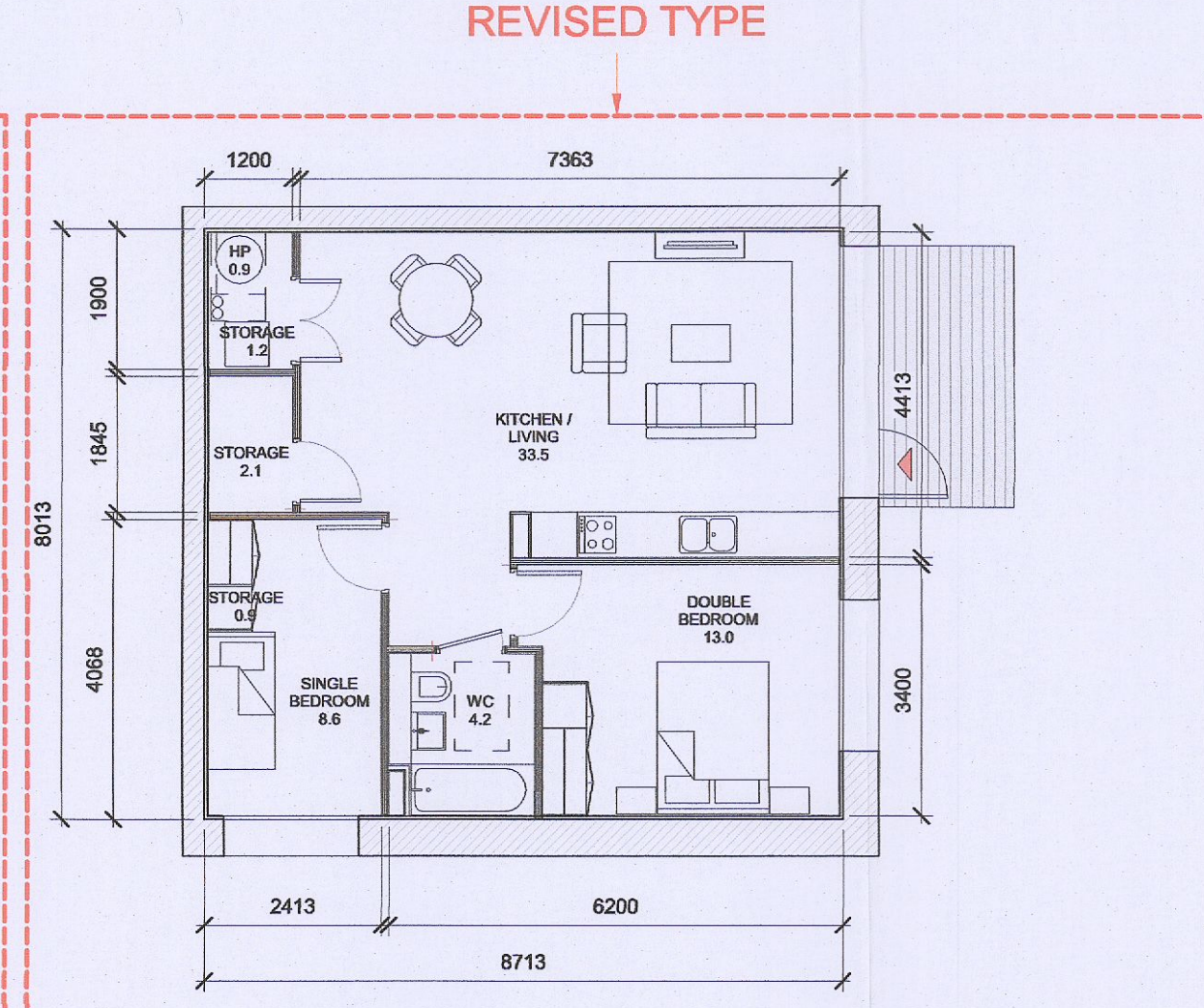
2 T.202 C
1: 100

T.202_C SPACE REQUIREMENTS											
Apartment Area	Required Apartment Area	Required Area Met	Kitchen - Living Area	Required Kitchen - Living Area	Required Area Met	Total Bedroom Area	Required Total Bedroom Area	Required Area Met	Total Storage Area	Required Total Storage Area	Heat Pump Area
63.2 m²	63.0 m²	Yes	30.6 m²	28.0 m²	Yes	20.1 m²	20.1 m²	Yes	5.0 m²	5.0 m²	Yes



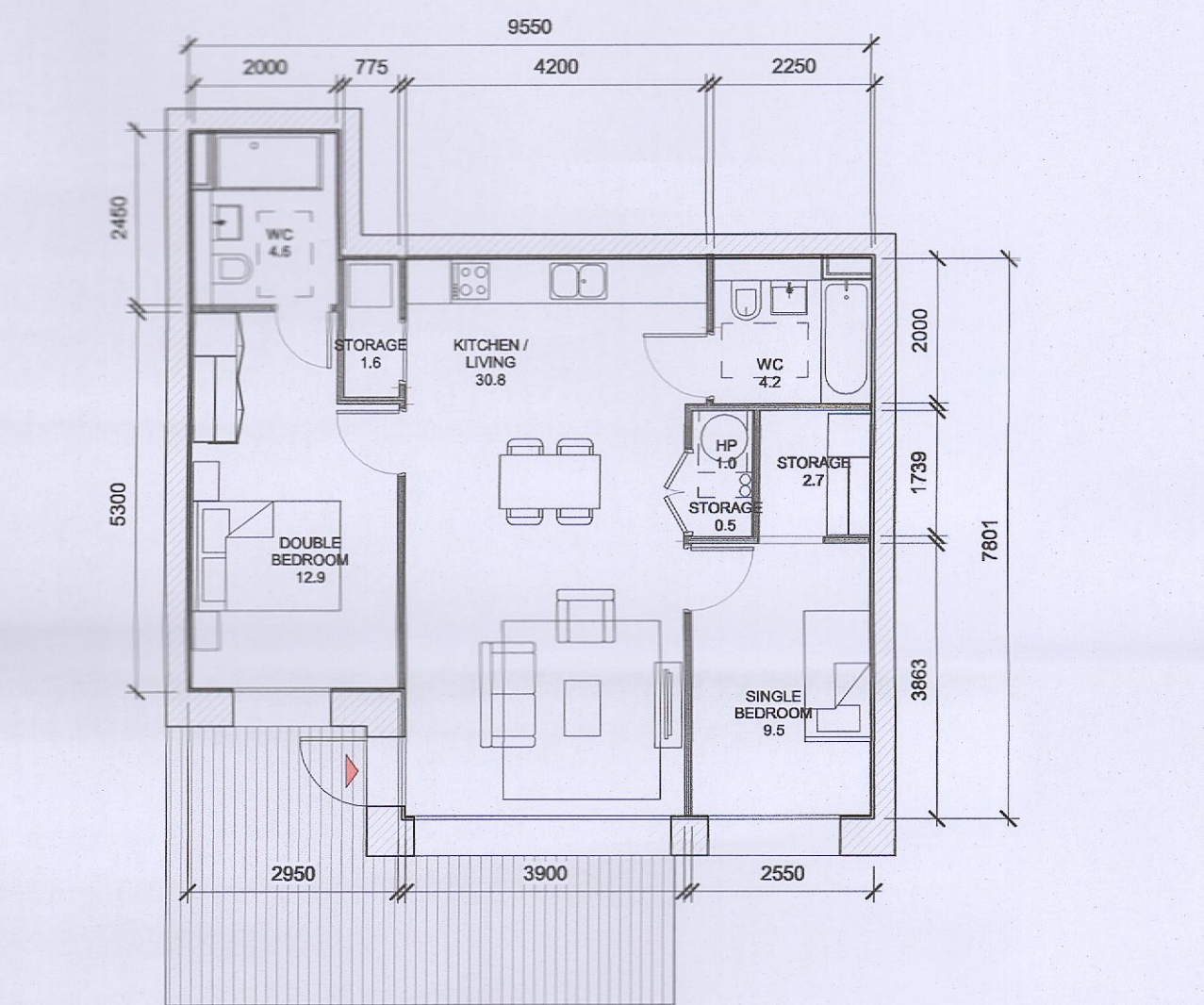
3 T.201 D
1: 100

T.201_D SPACE REQUIREMENTS											
Apartment Area	Required Apartment Area	Required Area Met	Kitchen - Living Area	Required Kitchen - Living Area	Required Area Met	Total Bedroom Area	Required Total Bedroom Area	Required Area Met	Total Storage Area	Required Total Storage Area	Heat Pump Area
65.7 m²	63.0 m²	Yes	31.1 m²	28.0 m²	Yes	21.6 m²	20.1 m²	Yes	5.4 m²	5.0 m²	Yes



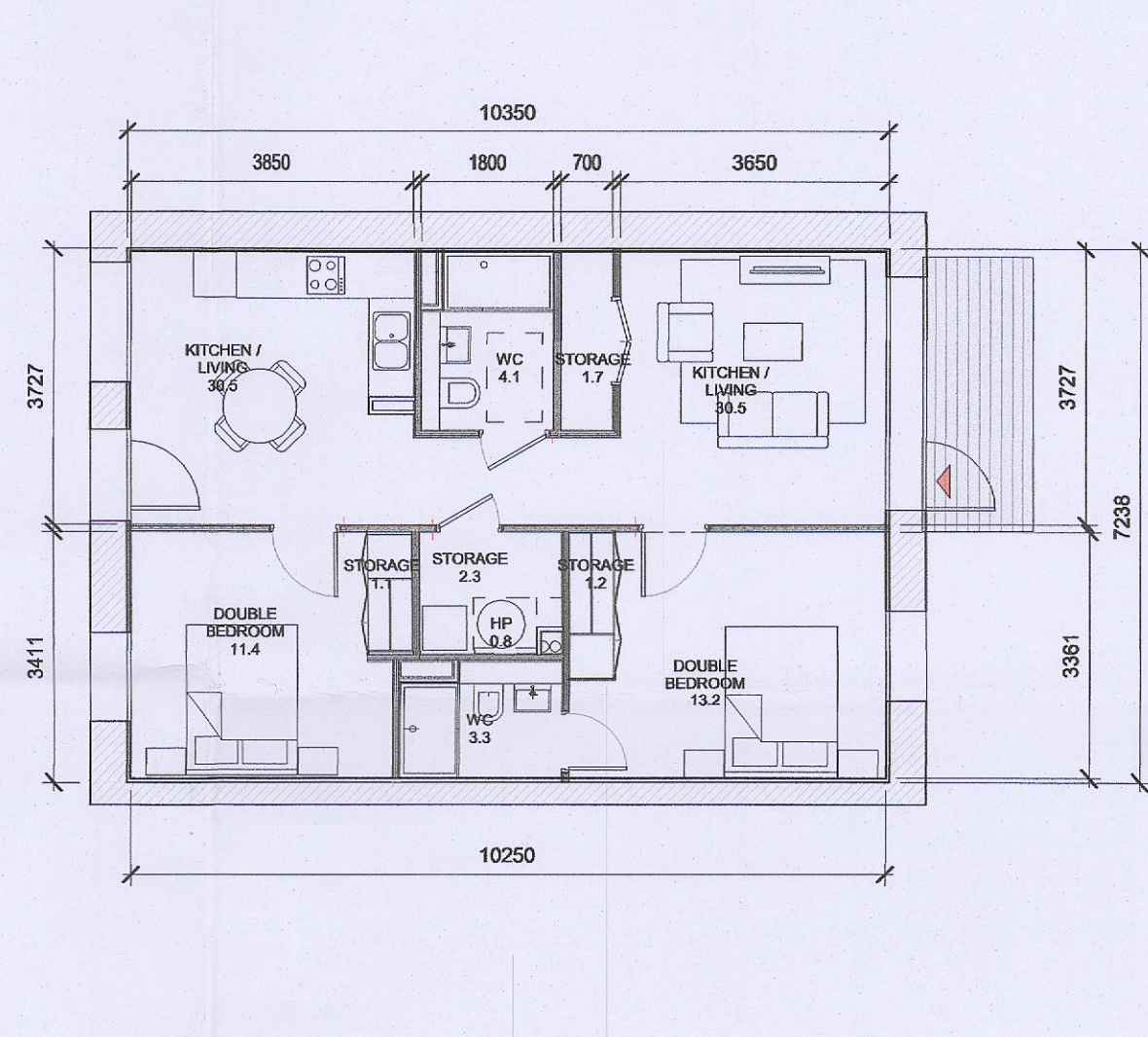
4 T.202 D
1: 100

T.202_D SPACE REQUIREMENTS											
Apartment Area	Required Apartment Area	Required Area Met	Kitchen - Living Area	Required Kitchen - Living Area	Required Area Met	Total Bedroom Area	Required Total Bedroom Area	Required Area Met	Total Storage Area	Required Total Storage Area	Heat Pump Area
68.2 m²	63.0 m²	Yes	33.5 m²	28.0 m²	Yes	21.6 m²	20.1 m²	Yes	5.3 m²	5.0 m²	Yes



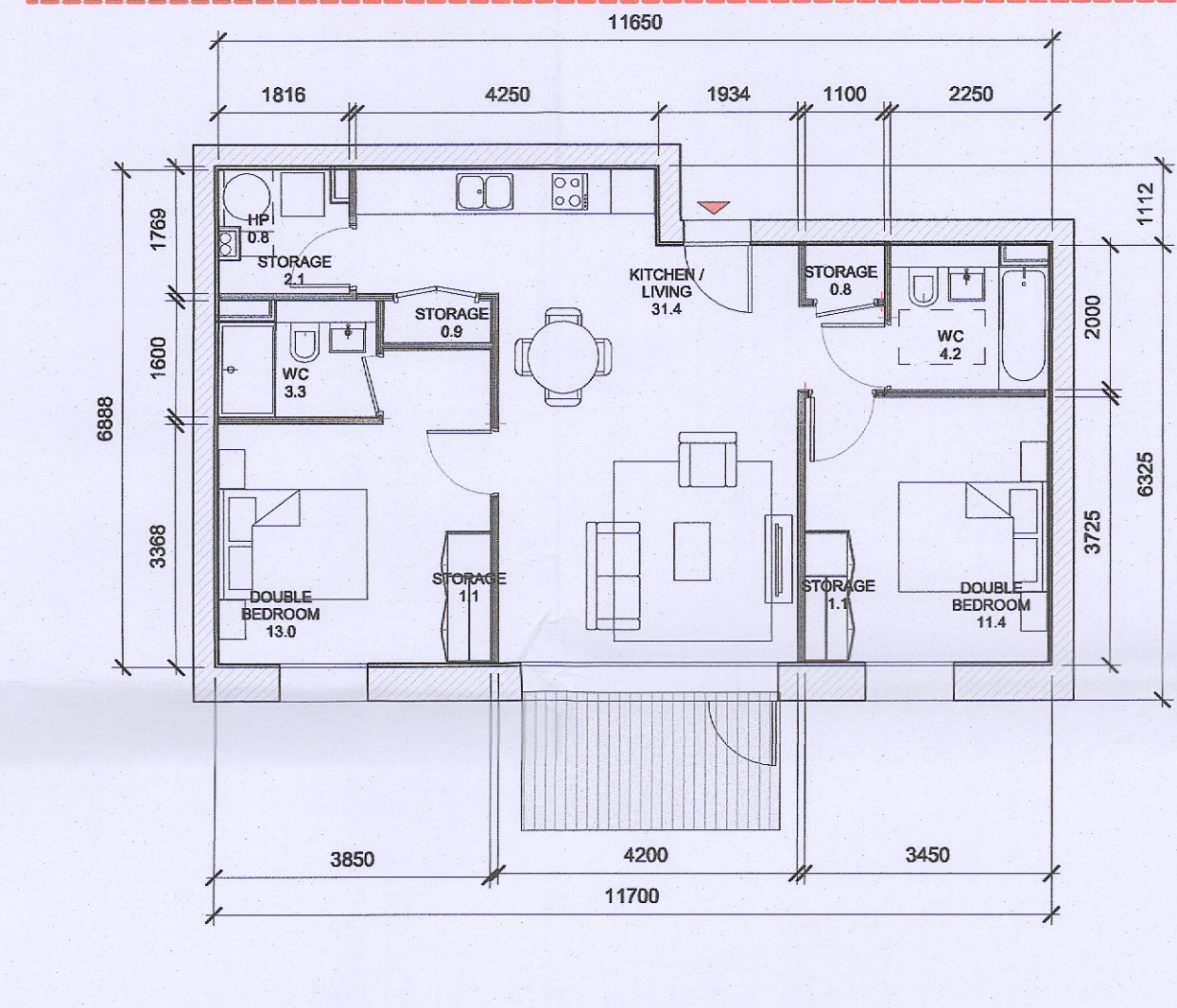
5 T.203 D
1: 100

T.203_D SPACE REQUIREMENTS											
Apartment Area	Required Apartment Area	Required Area Met	Kitchen - Living Area	Required Kitchen - Living Area	Required Area Met	Total Bedroom Area	Required Total Bedroom Area	Required Area Met	Total Storage Area	Required Total Storage Area	Heat Pump Area
71.9 m²	63.0 m²	Yes	30.9 m²	28.0 m²	Yes	22.5 m²	20.1 m²	Yes	5.9 m²	5.0 m²	Yes



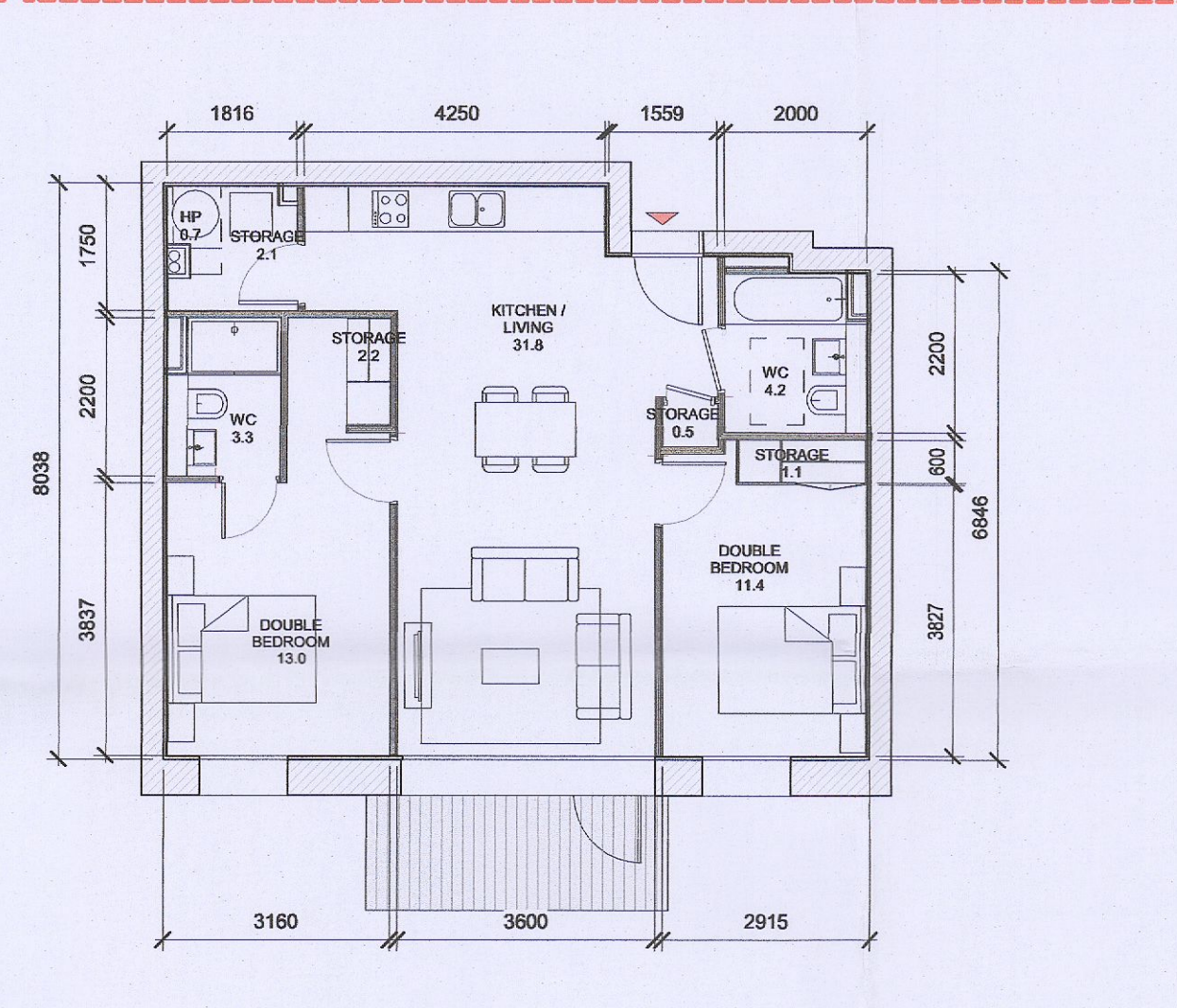
6 T.201 A
1: 100

T.201_A SPACE REQUIREMENTS											
Apartment Area	Required Apartment Area	Required Area Met	Kitchen - Living Area	Required Kitchen - Living Area	Required Area Met	Total Bedroom Area	Required Total Bedroom Area	Required Area Met	Total Storage Area	Required Total Storage Area	Heat Pump Area
73.2 m²	73.0 m²	Yes	30.7 m²	30.0 m²	Yes	24.6 m²	24.4 m²	Yes	6.3 m²	6.0 m²	Yes



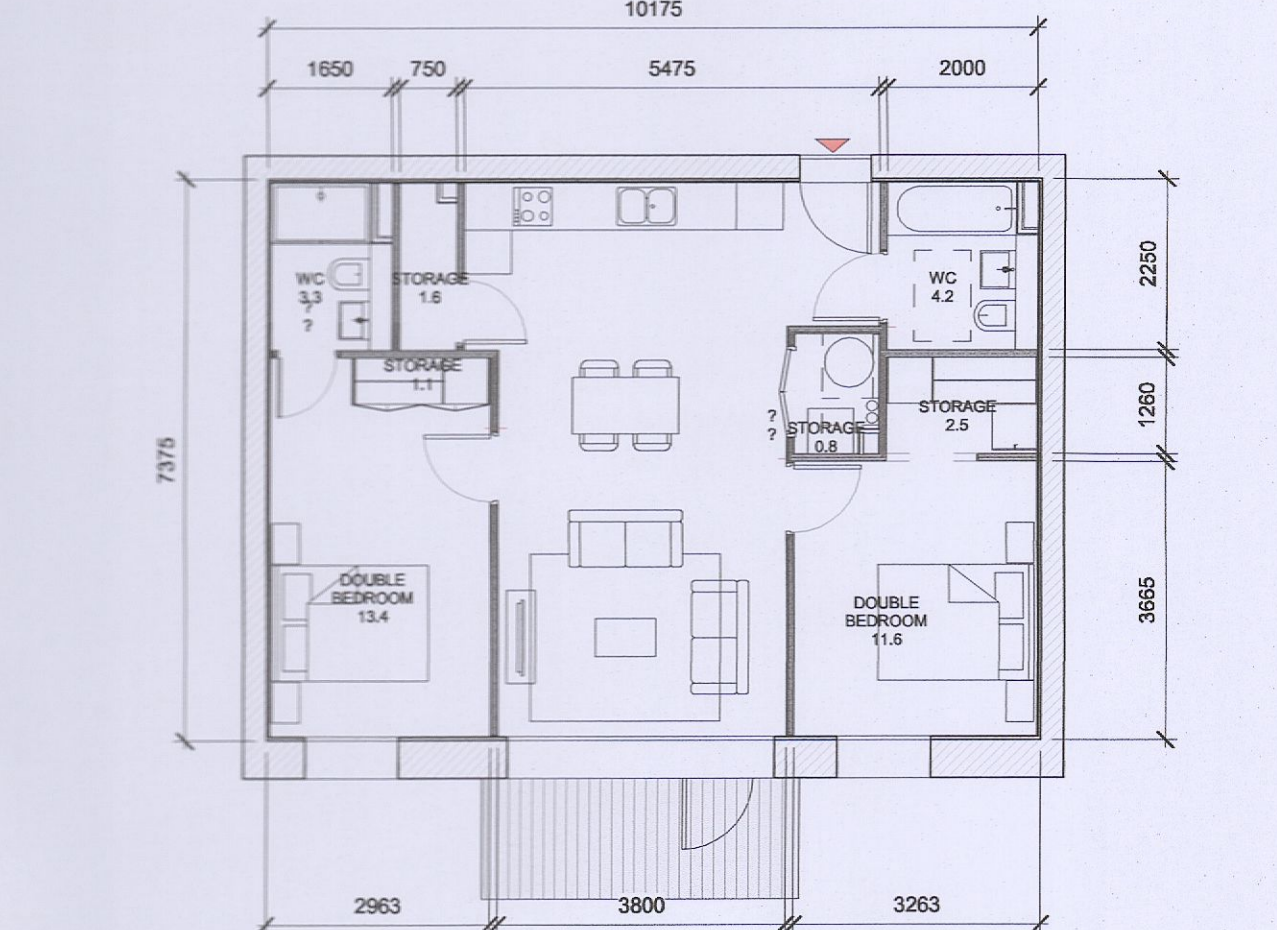
7 T.202 A
1: 100

T.202_A SPACE REQUIREMENTS											
Apartment Area	Required Apartment Area	Required Area Met	Kitchen - Living Area	Required Kitchen - Living Area	Required Area Met	Total Bedroom Area	Required Total Bedroom Area	Required Area Met	Total Storage Area	Required Total Storage Area	Heat Pump Area
74.0 m²	73.0 m²	Yes	31.4 m²	30.0 m²	Yes	24.4 m²	24.4 m²	Yes	6.0 m²	6.0 m²	Yes



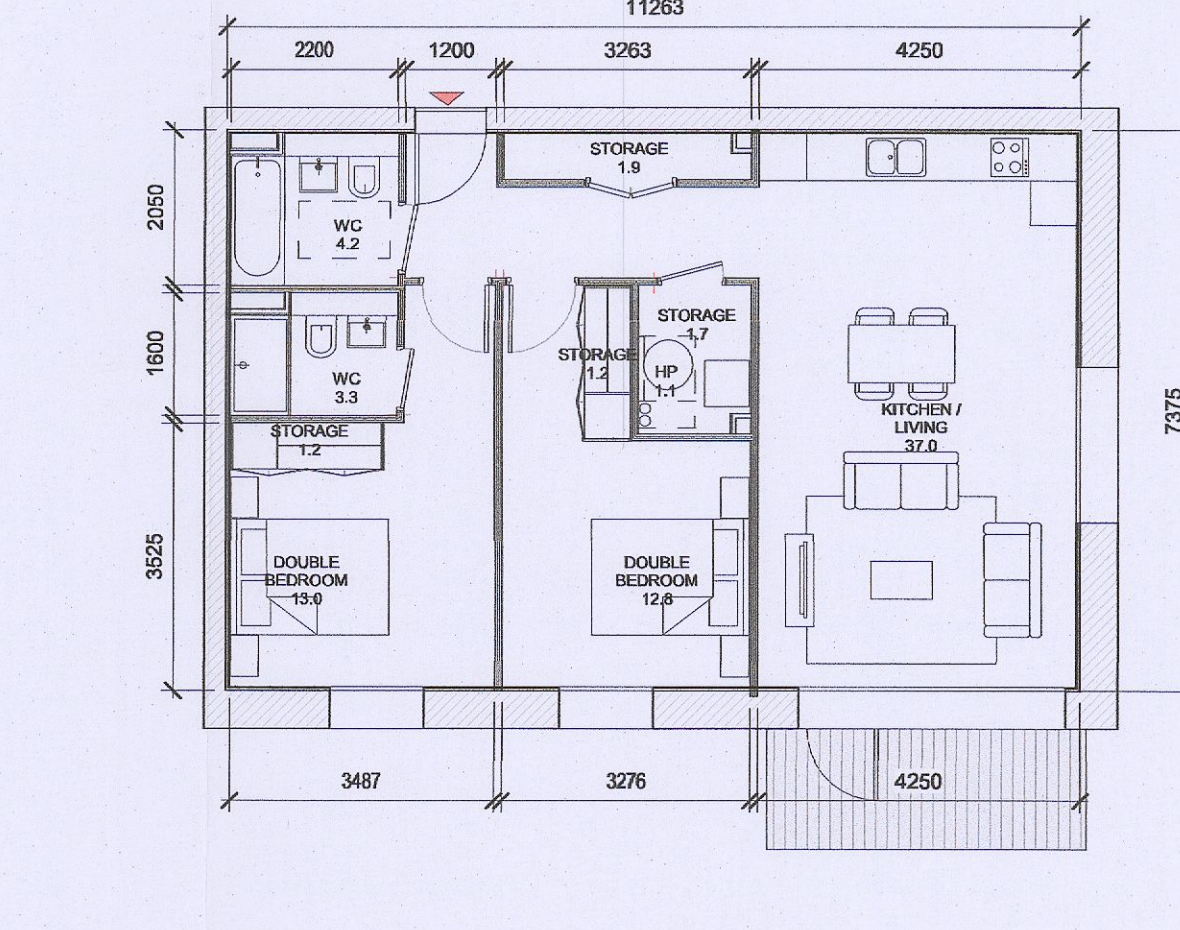
8 T.203 A
1: 100

T.203_A SPACE REQUIREMENTS											
Apartment Area	Required Apartment Area	Required Area Met	Kitchen - Living Area	Required Kitchen - Living Area	Required Area Met	Total Bedroom Area	Required Total Bedroom Area	Required Area Met	Total Storage Area	Required Total Storage Area	Heat Pump Area
73.8 m²	73.0 m²	Yes	31.8 m²	30.0 m²	Yes	24.4 m²	24.4 m²	Yes	6.0 m²	6.0 m²	Yes



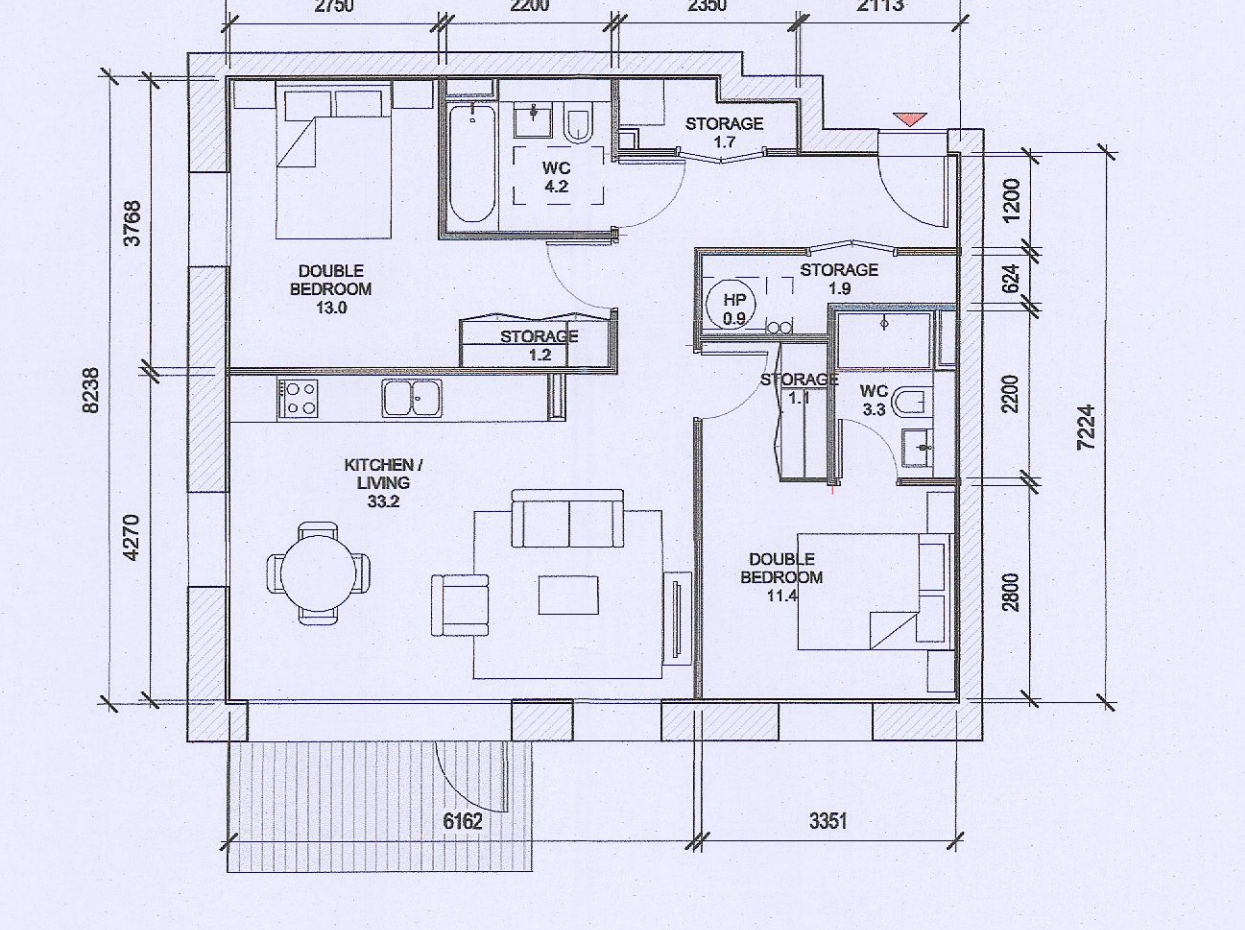
9 T.204 A
1: 100

T.204_A SPACE REQUIREMENTS											
Apartment Area	Required Apartment Area	Required Area Met	Kitchen - Living Area	Required Kitchen - Living Area	Required Area Met	Total Bedroom Area	Required Total Bedroom Area	Required Area Met	Total Storage Area	Required Total Storage Area	Heat Pump Area
73.7 m²	73.0 m²	Yes	30.9 m²	30.0 m²	Yes	25.0 m²	24.4 m²	Yes	6.1 m²	6.0 m²	Yes



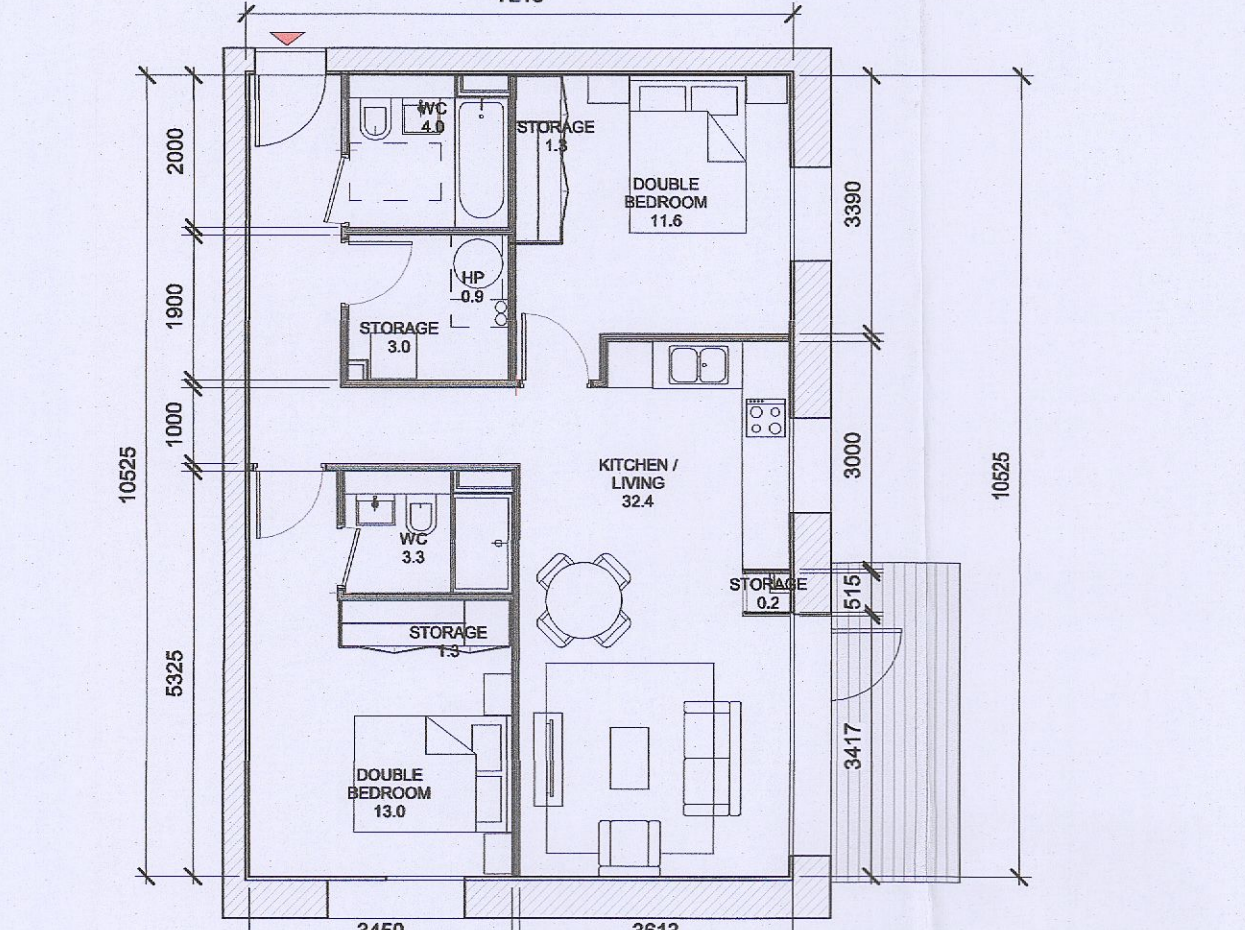
10 T.205 A
1: 100

T.205_A SPACE REQUIREMENTS											
Apartment Area	Required Apartment Area	Required Area Met	Kitchen - Living Area	Required Kitchen - Living Area	Required Area Met	Total Bedroom Area	Required Total Bedroom Area	Required Area Met	Total Storage Area	Required Total Storage Area	Heat Pump Area
81.2 m²	73.0 m²	Yes	37.0 m²	30.0 m²	Yes	25.8 m²	24.4 m²	Yes	6.0 m²	6.0 m²	Yes



11 T.206 A
1: 100

T.206_A SPACE REQUIREMENTS											
Apartment Area	Required Apartment Area	Required Area Met	Kitchen - Living Area	Required Kitchen - Living Area	Required Area Met	Total Bedroom Area	Required Total Bedroom Area	Required Area Met	Total Storage Area	Required Total Storage Area	Heat Pump Area
75.9 m²	73.0 m²	Yes	33.2 m²	30.0 m²	Yes	24.4 m²	24.4 m²	Yes	6.0 m²	6.0 m²	Yes



12 T.207 A
1: 100

T.207_A SPACE REQUIREMENTS											
Apartment Area	Required Apartment Area	Required Area Met	Kitchen - Living Area	Required Kitchen - Living Area	Required Area Met	Total Bedroom Area	Required Total Bedroom Area	Required Area Met	Total Storage Area	Required Total Storage Area	Heat Pump Area
74.9 m²	73.0 m²	Yes	32.4 m²	30.0 m²	Yes	24.6 m²	24.4 m²	Yes	6.0 m²	6.0 m²	Yes

HJL Drawing Number on previously lodged planning application: SD22A/0005
ACD3-HJL-ACD-ZZ-DR-A-P8003 Revision (P01)

Red dash line indicates extent of amendments to address RFI 0723 dated 08 JUNE 2022