

Red dash line indicates extent of amendments to address RFI 0723 dated 08 JUNE 2022

HJL Drawing Number on previously lodged planning application: SDZ22A/0005
ADC3-HJL-ACD-ZZ-DR-A-P8004 Revision (P01)

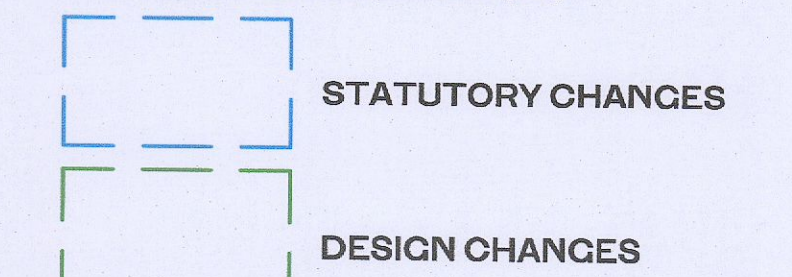
ALL DIMENSIONS TO BE CHECKED ON SITE
NO DIMENSIONS TO BE SCALED FROM THIS DRAWING
DRAWING IS TO BE READ IN CONJUNCTION WITH RELEVANT CONSULTANTS DRAWINGS

APARTMENT TYPES 2B

Count	APARTMENT TYPE	LOCATION	APARTMENT AREA	
			Area sqm	Min. Area
4	2B-3P	T.201_C	70.5	63.0
8	2B-3P	T.201_D	66.7	63.0
1	2B-3P	T.202_C	63.2	63.0
2	2B-3P	T.202_D	68.2	63.0
1	2B-3P	T.203_D	71.9	63.0

		APARTMENT TYPE	LOCATION	Area sqm	Min. Area
2	2B-4P	T.201_A	A	73.2	73.0
4	2B-4P	T.202_A	A	74.0	73.0
4	2B-4P	T.203_A	A	73.8	73.0
13	2B-4P	T.203_C	C	75.8	73.0
8	2B-4P	T.204_A	A	73.7	73.0
16	2B-4P	T.204_C	C	73.6	73.0
16	2B-4P	T.204_D	D	73.6	73.0
8	2B-4P	T.204_E	E	74.3	73.0
8	2B-4P	T.205_A	A	81.2	73.0
4	2B-4P	T.205_C	C	76.4	73.0
4	2B-4P	T.205_D	D	76.7	73.0
27	2B-4P	T.206_C	C	75.9	73.0
1	2B-4P	T.206_D	D	73.3	73.0
6	2B-4P	T.207_A	A	80.7	73.0
8	2B-4P	T.207_C	C	74.9	73.0
16	2B-4P	T.207_D	D	73.3	73.0
1	2B-4P	T.207_E	E	81.6	73.0
2	2B-4P	T.208_A	A	77.2	73.0
5	2B-4P	T.208_C	C	73.6	73.0
16	2B-4P	T.208_D	D	80.3	73.0
2	2B-4P	T.209_A	A	73.4	73.0
4	2B-4P	T.209_D	D	82.8	73.0
2	2B-4P	T.210_A	A	78.0	73.0
3	2B-4P	T.210_D	D	81.5	73.0
1	2B-4P	T.211_D	D	78.8	73.0
3	2B-4P	T.212_D	D	78.9	73.0
3	2B-4P	T.213_D	D	74.0	73.0
2	2B-4P	T.214_D	D	83.3	73.0
1	2B-4P	T.215_D	D	76.3	73.0
1	2B-4P	T.216_D	D	75.7	73.0
1	2B-4P	T.217_D	D	85.2	73.0
3	2B-4P	T.218_D	D	82.4	73.0

Grand total: 211
NON RFI RELATED CHANGES



GENERAL NOTES:
O1 ALL INTERNAL APARTMENT LAYOUTS HAVE BEEN AMENDED DUE TO DESIGN DEVELOPMENT AND CO-ORDINATION WITH OTHER DISCIPLINES. THE INDIVIDUAL UNITS MAINTAIN THE SPACE REQUIREMENT GUIDELINES AS PER THE ORIGINAL PLANNING SUBMISSION
O2 MINOR AMENDMENTS TO M&E AND SE LAYOUTS DUE TO DESIGN DEVELOPMENT & TO ACCOMMODATE COMPLIANCE WITH STATUTORY REQUIREMENTS
O3 REDUCED PARAPET HEIGHT & FALL ARREST SYSTEM INTRODUCED TO BLOCKS A,C,D AND RESIDENT PAVILLION BUILDINGS DUE TO MAINTENANCE. PARAPET HEIGHT OF TOWER ELEMENT OF BLOCK C1 RETAINED AS PER ORIGINAL PLANNING APPLICATION

REV	DATE	DESCRIPTION	CMH	DRN
P02	06/09/2022	ISSUED FOR FURTHER INFORMATION	RJ	SEN
P01	08/04/2022	ISSUED FOR PLANNING	RJ	FM

STATUS CODE DESCRIPTION
ISSUED FOR FURTHER INFORMATION

CLIENT
QUINTAIN IRELAND LTD.

PROJECT
ADAMSTOWN STATION BLOCKS ACD

DRAWING
APARTMENT TYPES Sheet 4
2B Apartments

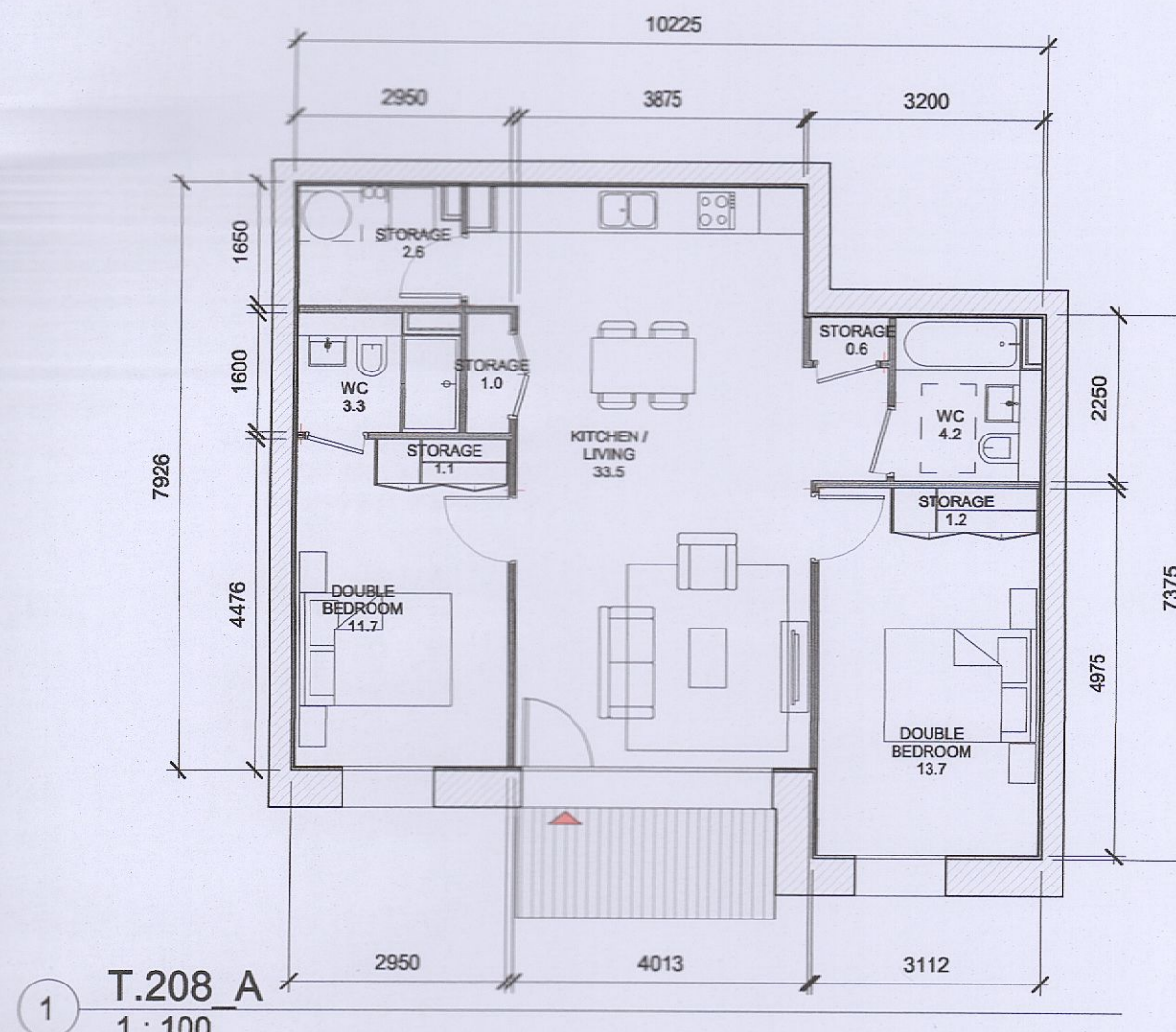
PROJECT NUMBER	DATE
950747	08/04/22

SCALE@ A1:	DRAWN/CHECKED:
As indicated	SEN/RJ

STATUS CODE:	DRAWING NUMBER	REVISION
A1	ADC3-HJL-ACD-ZZ-DR-A-P8004	P02

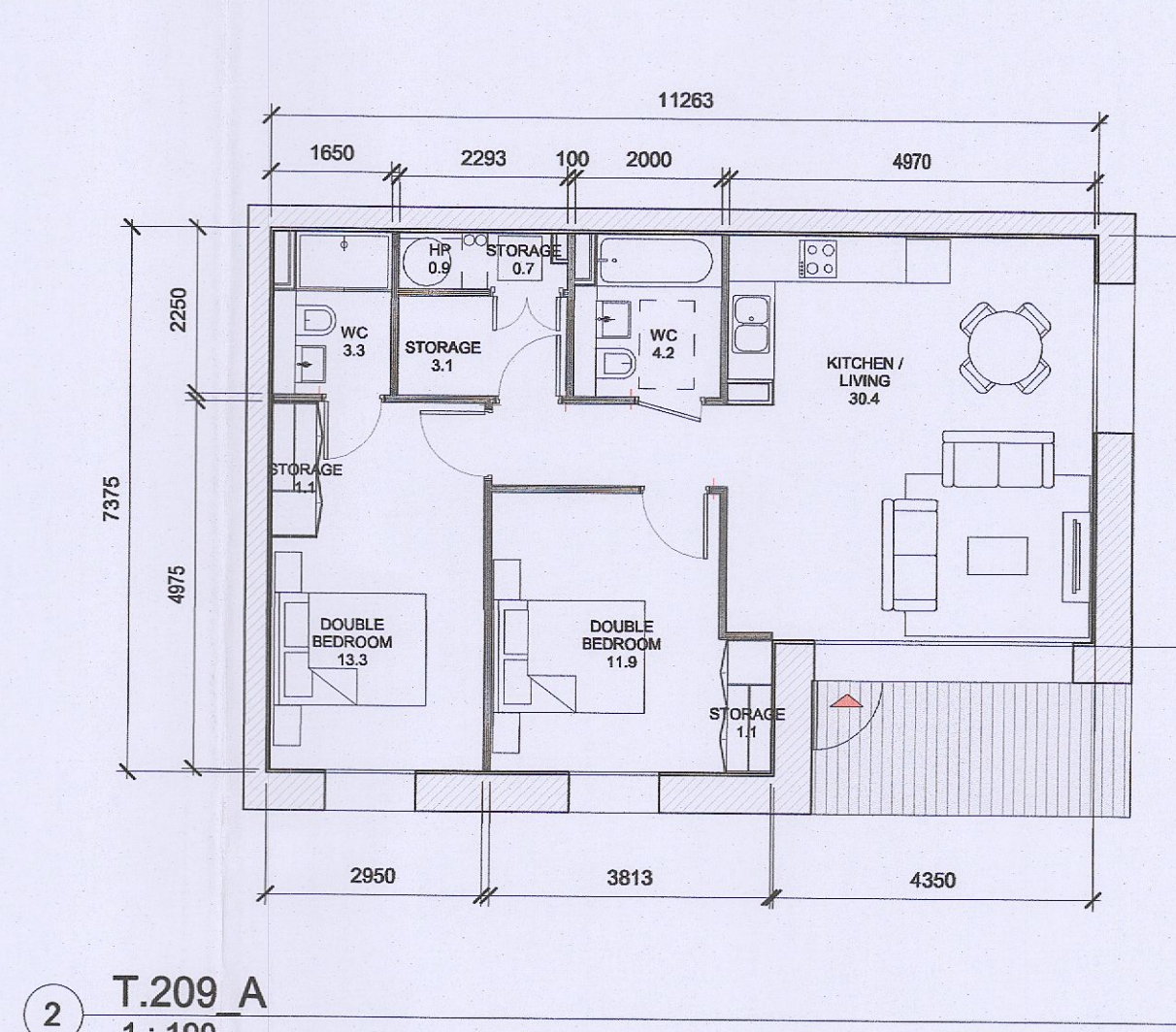
Henry J Lyons

Architecture + Interiors
henryjlyons.com
+353 1 888 3333
info@henryjlyons.com
51-54 Pearse Street
Dublin D02 K466



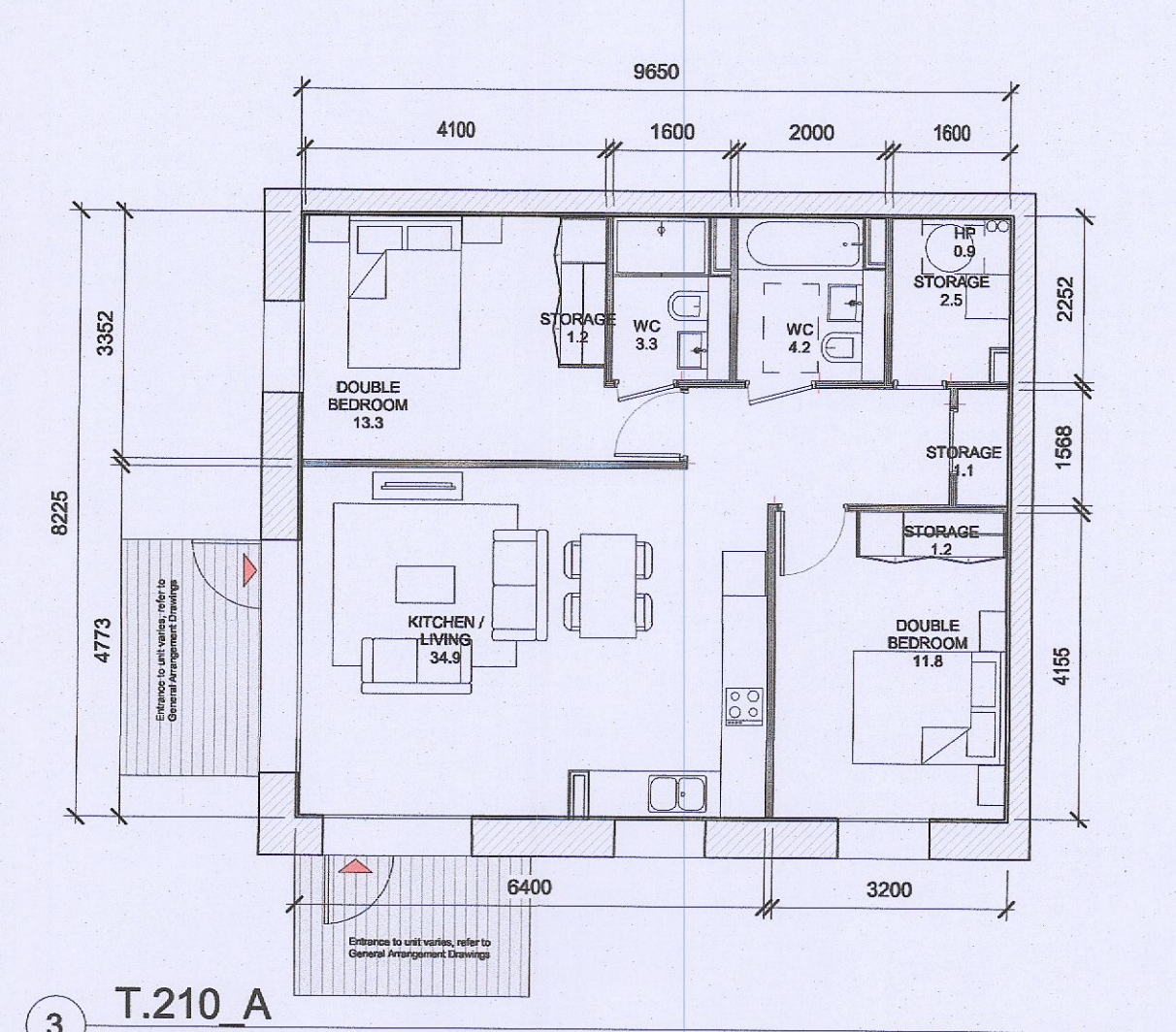
T.208 A SPACE REQUIREMENTS

Apartment Area	Required Apartment Area	Required Area Met	Required Area Met	Required Area Met	Required Area Met	Required Area Met	Required Area Met	Required Area Met	Required Area Met	Heat Pump Area		
77.2 m²	73.0 m²	Yes	33.5 m²	30.0 m²	Yes	25.4 m²	24.4 m²	Yes	6.5 m²	6.0 m²	Yes	1.0 m²



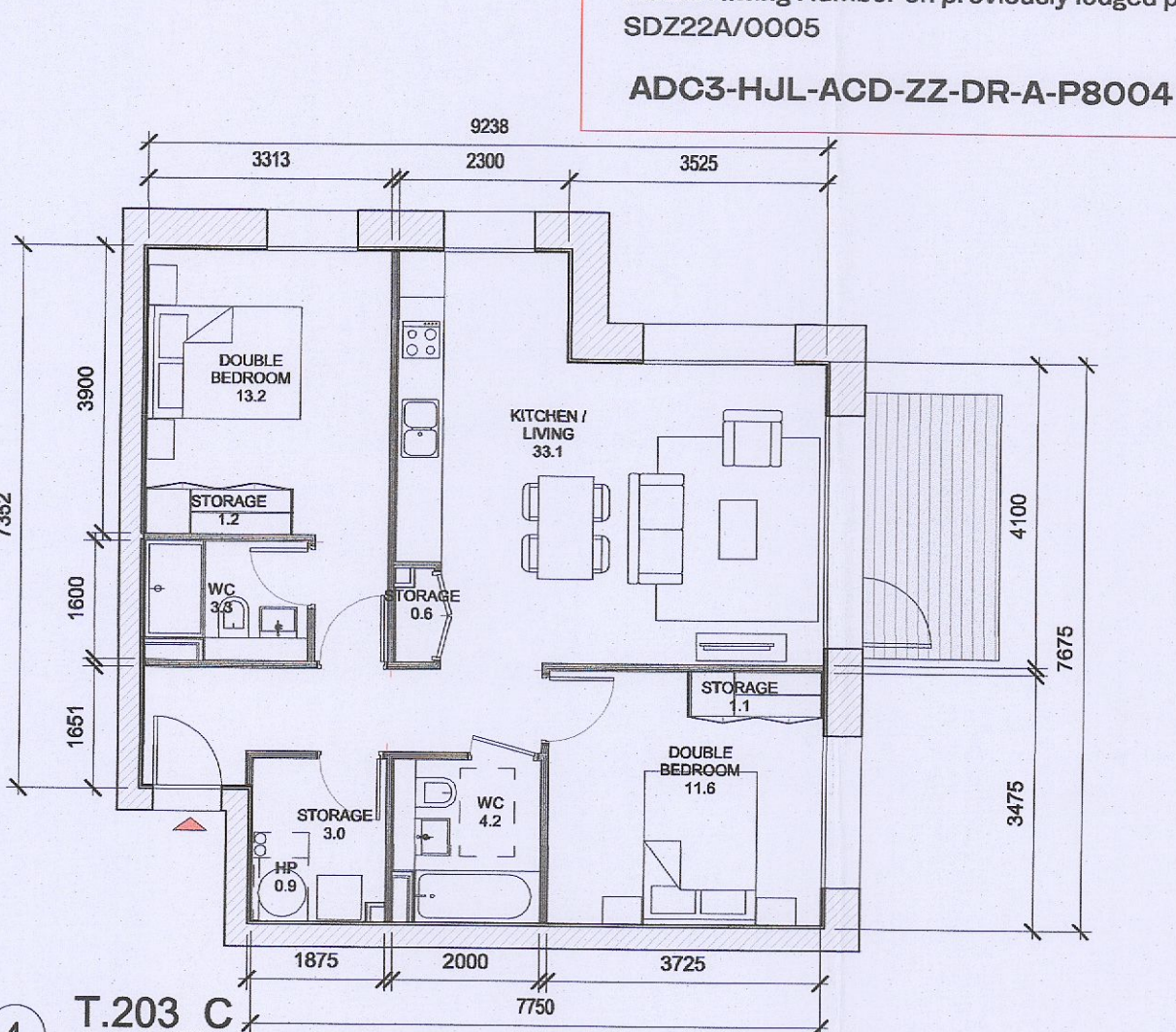
T.209 A SPACE REQUIREMENTS

Apartment Area	Required Apartment Area	Required Area Met	Required Area Met	Required Area Met	Required Area Met	Required Area Met	Required Area Met	Required Area Met	Required Area Met	Heat Pump Area		
73.4 m²	73.0 m²	Yes	30.4 m²	30.0 m²	Yes	25.2 m²	24.4 m²	Yes	6.0 m²	6.0 m²	Yes	0.9 m²



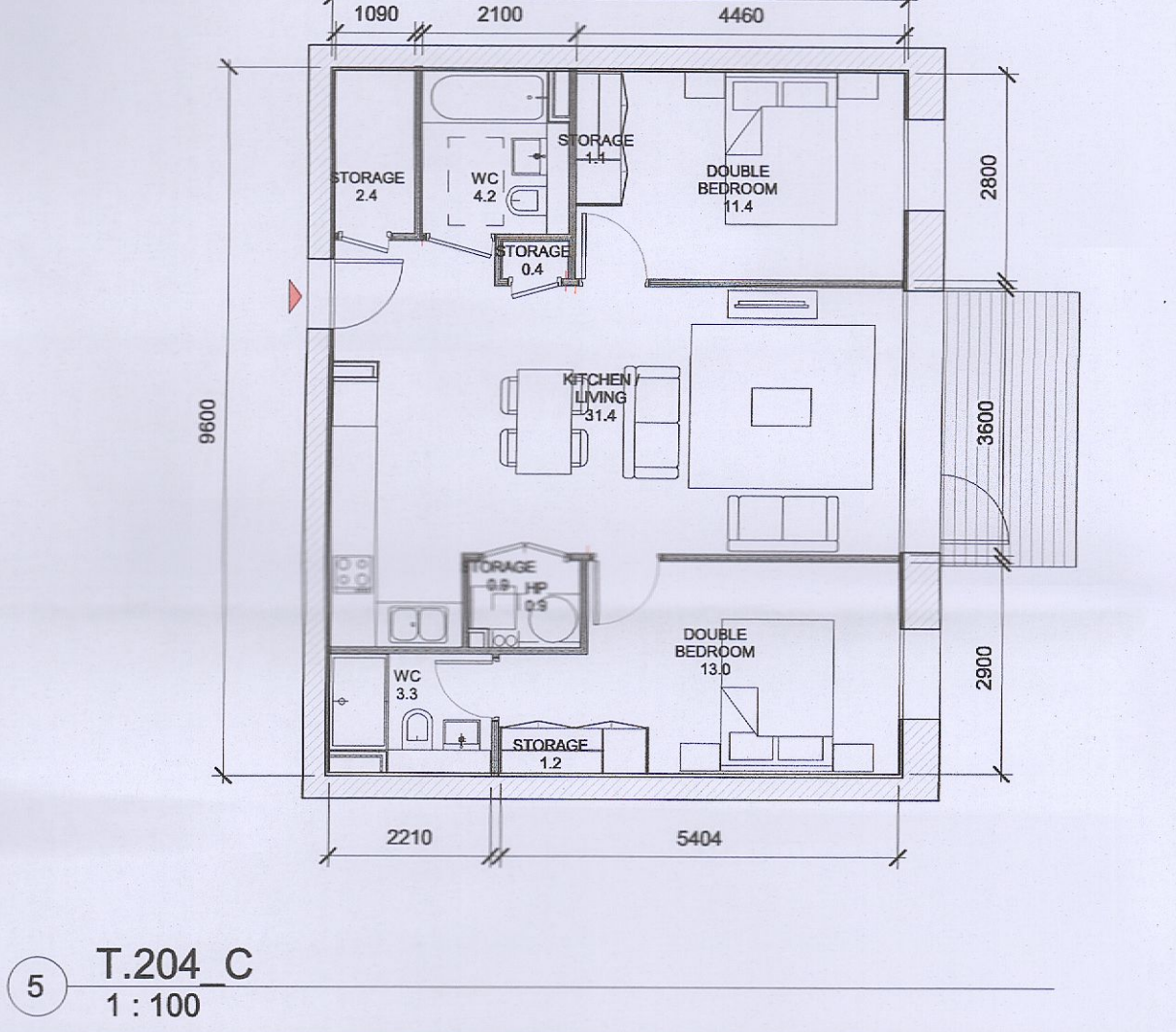
T.210 A SPACE REQUIREMENTS

Apartment Area	Required Apartment Area	Required Area Met	Required Area Met	Required Area Met	Required Area Met	Required Area Met	Required Area Met	Required Area Met	Required Area Met	Heat Pump Area		
78.0 m²	73.0 m²	Yes	35.0 m²	30.0 m²	Yes	25.1 m²	24.4 m²	Yes	6.0 m²	6.0 m²	Yes	0.9 m²



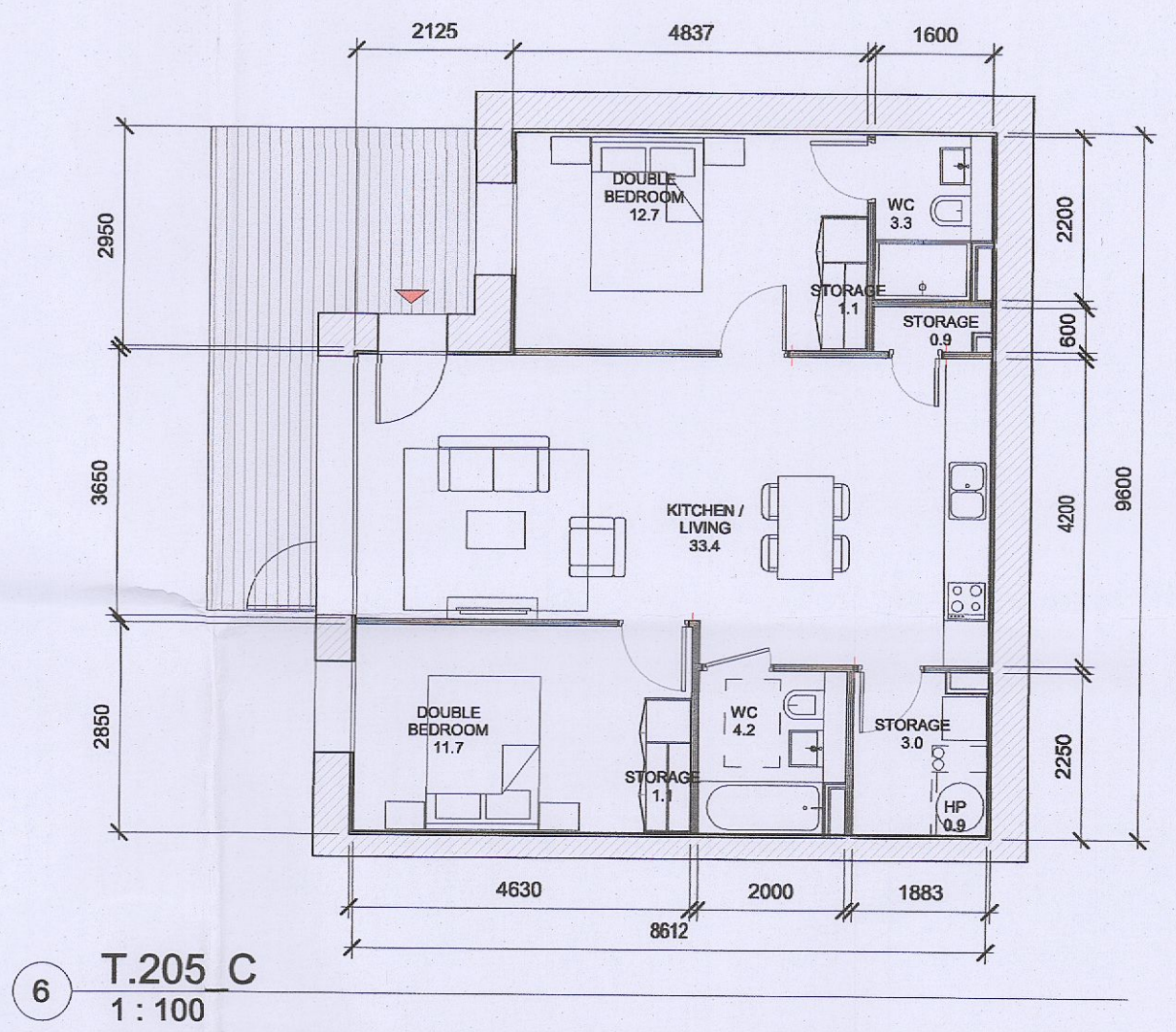
T.203 C SPACE REQUIREMENTS

Apartment Area	Required Apartment Area	Required Area Met	Required Area Met	Required Area Met	Required Area Met	Required Area Met	Required Area Met	Required Area Met	Required Area Met	Heat Pump Area		
75.8 m²	73.0 m²	Yes	33.1 m²	30.0 m²	Yes	24.8 m²	24.4 m²	Yes	6.1 m²	6.0 m²	Yes	0.9 m²



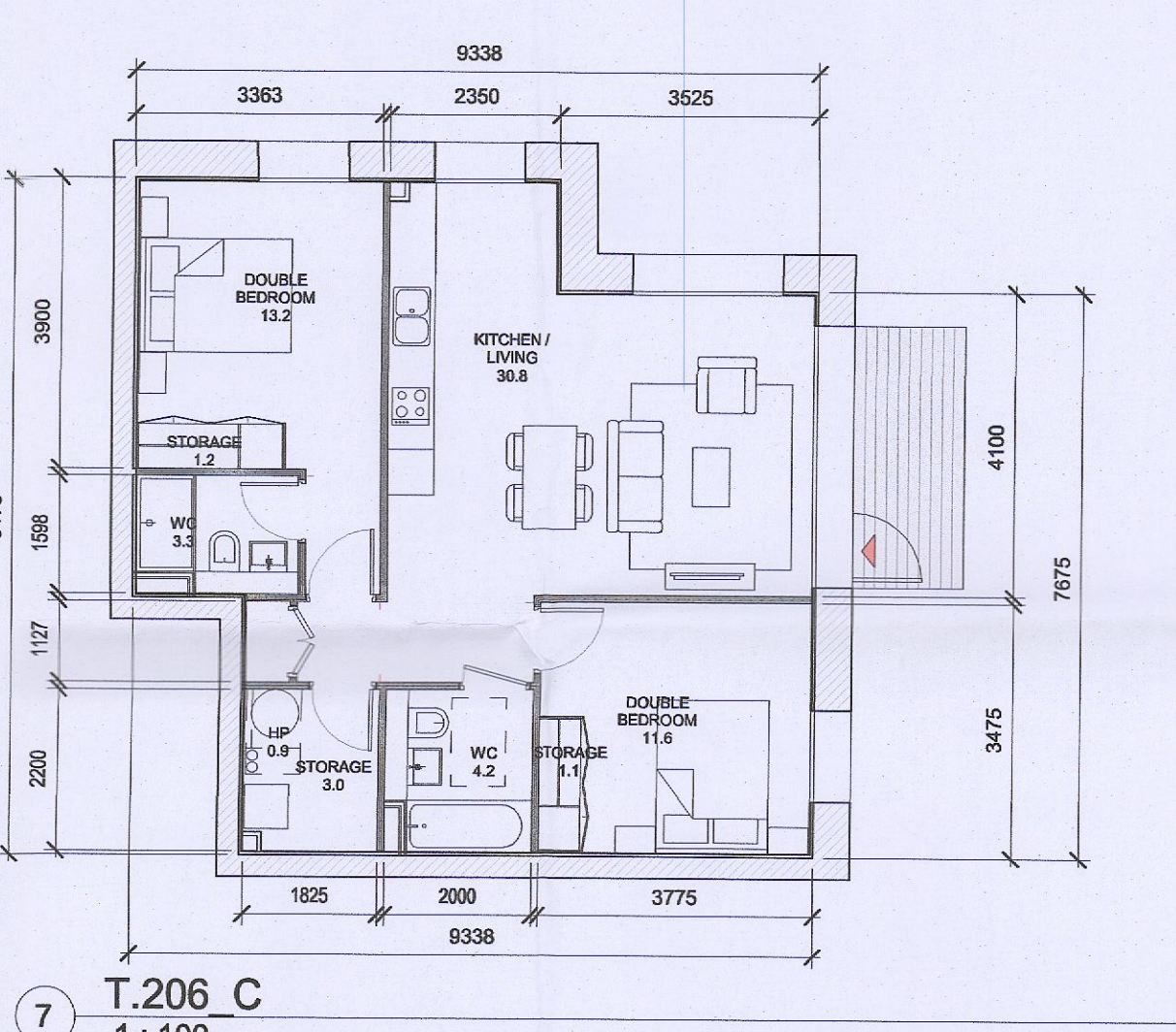
T.204 C SPACE REQUIREMENTS

Apartment Area	Required Apartment Area	Required Area Met	Required Area Met	Required Area Met	Required Area Met	Required Area Met	Required Area Met	Required Area Met	Required Area Met	Heat Pump Area		
73.6 m²	73.0 m²	Yes	31.4 m²	30.0 m²	Yes	24.4 m²	24.4 m²	Yes	6.0 m²	6.0 m²	Yes	0.9 m²



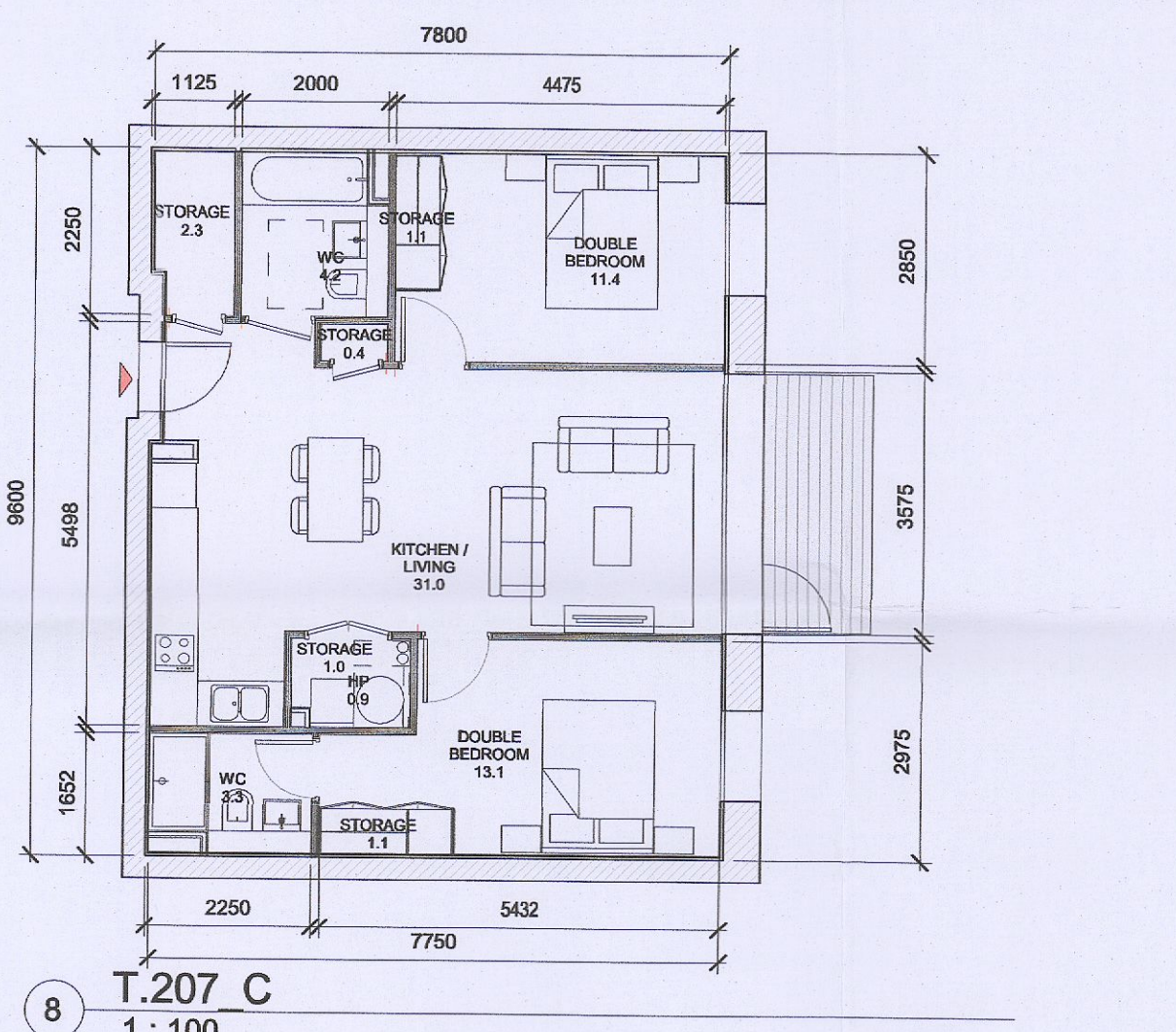
T.205 C SPACE REQUIREMENTS

Apartment Area	Required Apartment Area	Required Area Met	Required Area Met	Required Area Met	Required Area Met	Required Area Met	Required Area Met	Required Area Met	Required Area Met	Heat Pump Area		
75.4 m²	73.0 m²	Yes	33.4 m²	30.0 m²	Yes	24.4 m²	24.4 m²	Yes	6.2 m²	6.0 m²	Yes	0.9 m²



T.206 C SPACE REQUIREMENTS

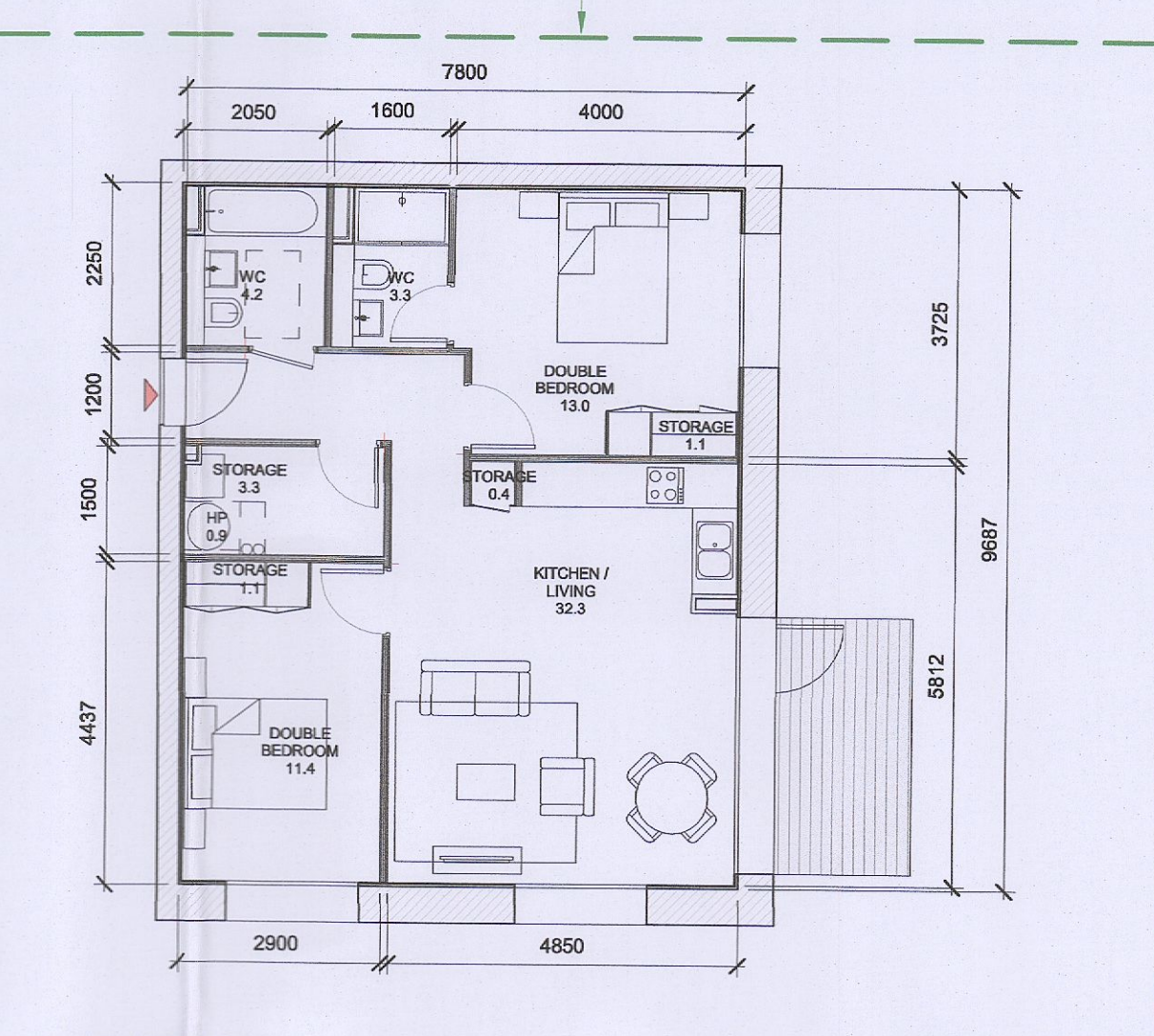
Apartment Area	Required Apartment Area	Required Area Met	Required Area Met	Required Area Met	Required Area Met	Required Area Met	Required Area Met	Required Area Met	Required Area Met	Heat Pump Area		
73.3 m²	73.0 m²	Yes	30.9 m²	30.0 m²	Yes	24.8 m²	24.4 m²	Yes	6.1 m²	6.0 m²	Yes	0.9 m²



T.207 C SPACE REQUIREMENTS

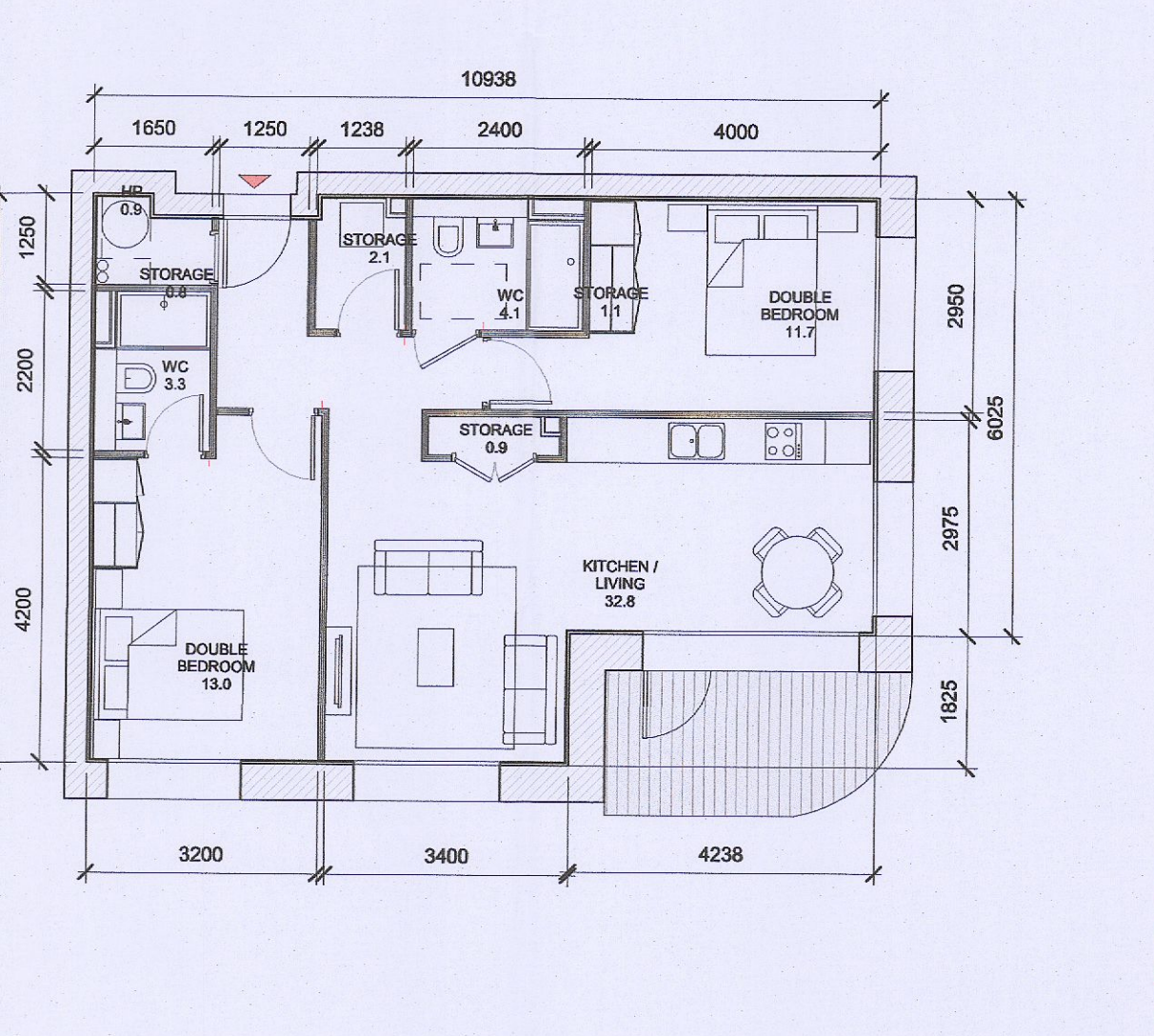
Apartment Area	Required Apartment Area	Required Area Met	Required Area Met	Required Area Met	Required Area Met	Required Area Met	Required Area Met	Required Area Met	Required Area Met	Heat Pump Area		
73.3 m²	73.0 m²	Yes	31.0 m²	30.0 m²	Yes	24.5 m²	24.4 m²	Yes	6.0 m²	6.0 m²	Yes	0.9 m²

UPDATED TYPE



T.204 D SPACE REQUIREMENTS

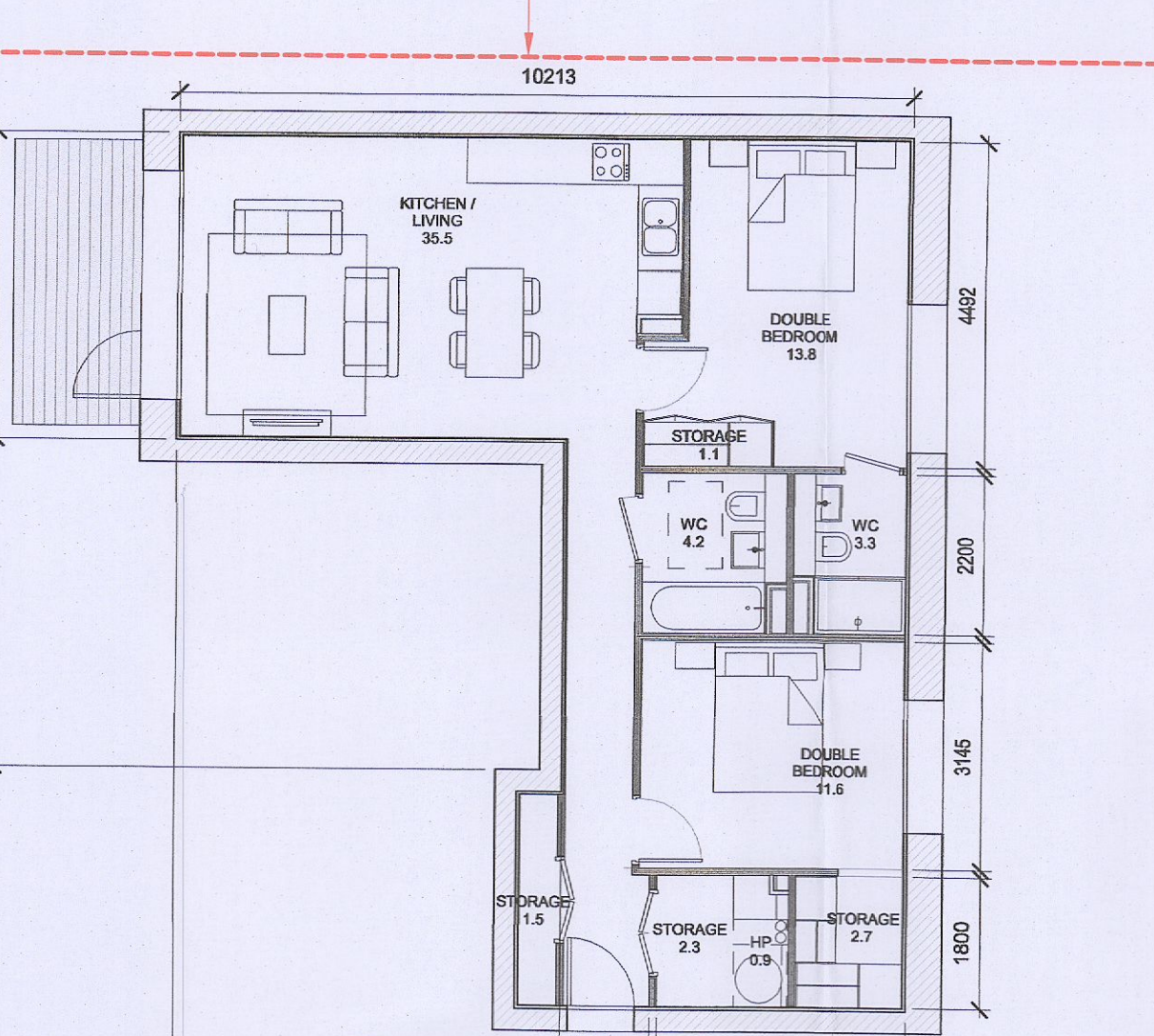
Apartment Area	Required Apartment Area	Required Area Met	Required Area Met	Required Area Met	Required Area Met	Required Area Met	Required Area Met	Required Area Met	Required Area Met	Heat Pump Area		
74.3 m²	73.0 m²	Yes	32.3 m²	30.0 m²	Yes	24.4 m²	24.4 m²	Yes	6.0 m²	6.0 m²	Yes	0.9 m²



T.205 D SPACE REQUIREMENTS

Apartment Area	Required Apartment Area	Required Area Met	Required Area Met	Required Area Met	Required Area Met	Required Area Met	Required Area Met	Required Area Met	Required Area Met	Heat Pump Area		
76.7 m²	73.0 m²	Yes	32.6 m²	30.0 m²	Yes	24.7 m²	24.4 m²	Yes	6.0 m²	6.0 m²	Yes	0.9 m²

REVISED TYPE



T.206 D SPACE REQUIREMENTS

Apartment Area	Required Apartment Area	Required Area Met	Required Area Met	Required Area Met	Required Area Met	Required Area Met	Required Area Met	Required Area Met	Required Area Met	Heat Pump Area		
80.7 m²	73.0 m²	Yes	35.5 m²	30.0 m²	Yes	25.4 m²	24.4 m²	Yes	7.7 m²	6.0 m²	Yes	0.9 m²

T.208 C SPACE REQUIREMENTS

Apartment Area	Required Apartment Area	Required Area Met	Required Area Met	Required Area Met	Required Area Met	Required Area Met	Required Area Met	Required Area Met	Required Area Met	Heat Pump Area		
73.6 m²	73.0 m²	Yes	30.6 m²	30.0 m²	Yes	25.2 m²	24.4 m²	Yes	6.0 m²	6.0 m²	Yes	0.9 m²

1 T.208 A 1:100

2 T.209 A 1:100

3 T.210 A 1:100

4 T.203 C 1:100

5 T.204 C 1:100

6 T.205 C 1:100

7 T.206 C 1:100

8 T.207 C 1:100

9 T.208 C 1:100

10 T.204 D 1:100

11 T.205 D 1:100

12 T.206 D 1:100