

Red dash line indicates extent of amendments to address RFI 0723 dated 08 JUNE 2022

HJL Drawing Number on previously lodged planning application: SDZ22A/0005
ADC3-HJL-ACD-ZZ-DR-A-P8005 Revision (PO1)

ALL DIMENSIONS TO BE CHECKED ON SITE
NO DIMENSIONS TO BE READ FROM THIS DRAWING
DRAWING IS TO BE READ IN CONJUNCTION WITH RELEVANT CONSULTANTS DRAWINGS

APARTMENT TYPES 2B						
Count	Apartment Type	Type Name	Location	Block	Area sqm	Min. Area
4	2B-3P	T.201_C	C	C	70.6	63.0
8	2B-3P	T.201_D	D	D	65.7	63.0
1	2B-3P	T.202_C	C	C	63.2	63.0
2	2B-3P	T.202_D	D	D	68.2	63.0
1	2B-3P	T.203_D	D	D	71.9	63.0

2	2B-4P	T.201_A	A	A	73.2	73.0
4	2B-4P	T.202_A	A	A	74.0	73.0
4	2B-4P	T.203_A	A	A	73.8	73.0
13	2B-4P	T.203_C	C	C	75.8	73.0
8	2B-4P	T.204_A	A	A	73.7	73.0
16	2B-4P	T.204_C	C	C	73.6	73.0
16	2B-4P	T.204_C	D	D	73.6	73.0
8	2B-4P	T.204_D	D	D	74.3	73.0
8	2B-4P	T.205_A	A	A	81.2	73.0
4	2B-4P	T.205_C	C	C	75.4	73.0
4	2B-4P	T.205_D	D	D	78.7	73.0
27	2B-4P	T.206_A	A	A	75.9	73.0
1	2B-4P	T.206_C	C	C	73.3	73.0
6	2B-4P	T.206_D	D	D	80.7	73.0
8	2B-4P	T.207_A	A	A	74.9	73.0
16	2B-4P	T.207_C	C	C	73.3	73.0
1	2B-4P	T.207_D	D	D	81.6	73.0
2	2B-4P	T.208_A	A	A	77.2	73.0
5	2B-4P	T.208_C	C	C	73.6	73.0
16	2B-4P	T.208_D	D	D	80.3	73.0
2	2B-4P	T.209_A	A	A	73.4	73.0
4	2B-4P	T.209_D	D	D	82.8	73.0
2	2B-4P	T.210_A	A	A	78.0	73.0
3	2B-4P	T.210_D	D	D	81.5	73.0
1	2B-4P	T.211_D	D	D	78.8	73.0
3	2B-4P	T.212_D	D	D	78.9	73.0
2	2B-4P	T.213_D	D	D	74.0	73.0
2	2B-4P	T.214_D	D	D	83.3	73.0
1	2B-4P	T.215_D	D	D	78.3	73.0
1	2B-4P	T.216_D	D	D	75.7	73.0
1	2B-4P	T.217_D	D	D	85.2	73.0
3	2B-4P	T.218_D	D	D	82.4	73.0

2B-4P: 195
Grand total: 211
NON RFI RELATED CHANGES

STATUTORY CHANGES

DESIGN CHANGES

GENERAL NOTES:
O1 ALL INTERNAL APARTMENT LAYOUTS HAVE BEEN AMENDED DUE TO DESIGN DEVELOPMENT AND CO-ORDINATION WITH OTHER DISCIPLINES. THE INDIVIDUAL UNITS MAINTAIN THE SPACE REQUIREMENT GUIDELINES AS PER THE ORIGINAL PLANNING SUBMISSION
O2 MINOR AMENDMENTS TO M&E AND SE LAYOUTS DUE TO DESIGN DEVELOPMENT & TO ACCOMMODATE COMPLIANCE WITH STATUTORY REQUIREMENTS
O3 REDUCED PARAPET HEIGHT & FALL ARREST SYSTEM INTRODUCED TO BLOCKS A,C,D AND RESIDENT PAVILLION BUILDINGS DUE TO MAINTENANCE. PARAPET HEIGHT OF TOWER ELEMENT OF BLOCK C1 RETAINED AS PER ORIGINAL PLANNING APPLICATION

REV	DATE	DESCRIPTION	RU	SEN
P02	06/08/2022	ISSUED FOR FURTHER INFORMATION	RU	SEN
P01	08/04/2022	ISSUED FOR PLANNING	RU	FM
REV	DATE	DESCRIPTION	CRH	DRN

STATUS CODE DESCRIPTION
ISSUED FOR FURTHER INFORMATION

CLIENT
QUINTAIN IRELAND LTD.

PROJECT
ADAMSTOWN STATION BLOCKS ACD

DRAWING
APARTMENT TYPES Sheet 5
2B Apartments

PROJECT NUMBER
950747

DATE
08/04/22

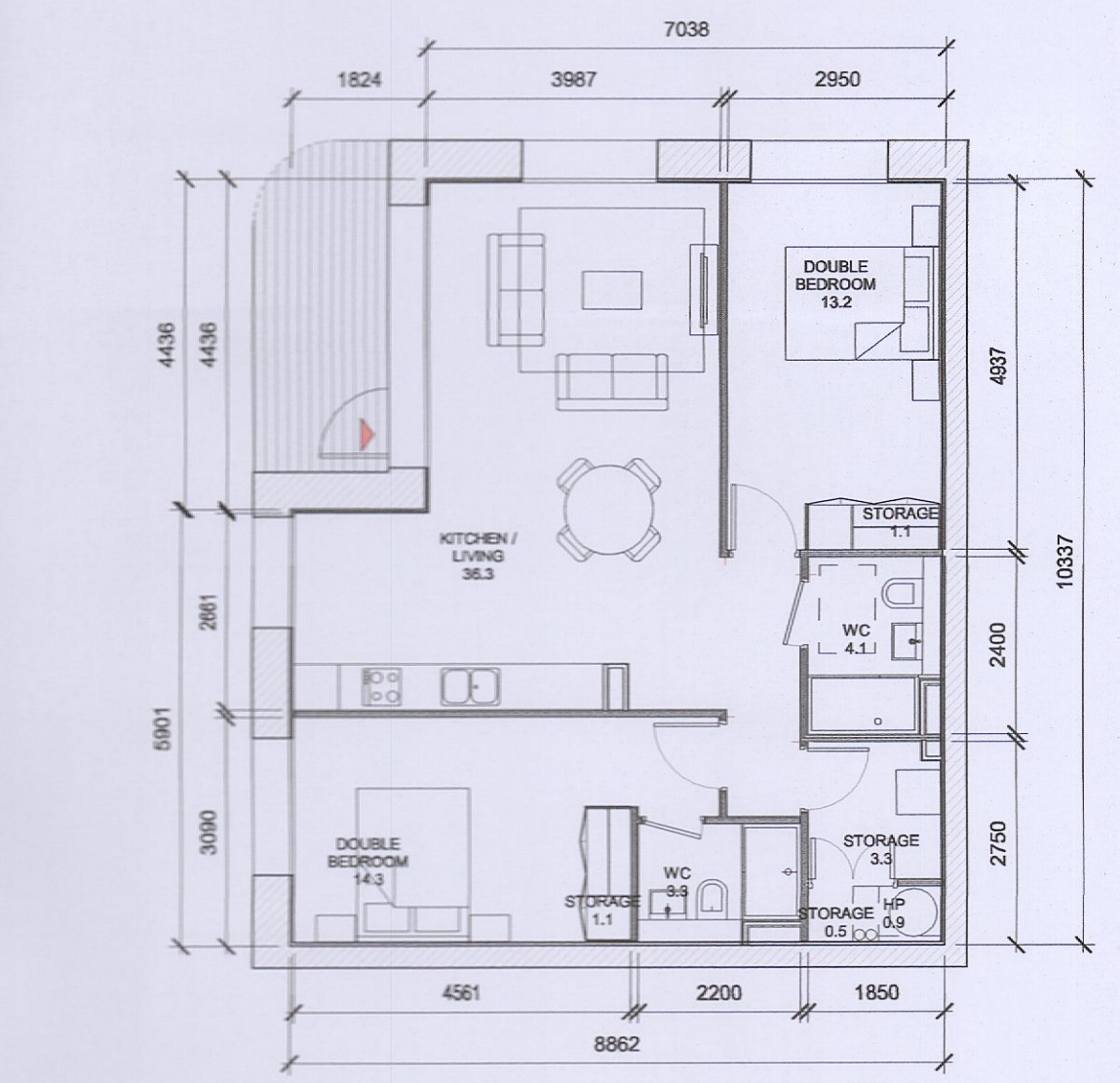
SCALE@ A1:
As Indicated

DRAWN/CHECKED:
SEN/RJ

STATUS CODE: DRAWING NUMBER REVISION
A1 ADC3-HJL-ACD-ZZ-DR-A-P8005 P02

Henry J Lyons

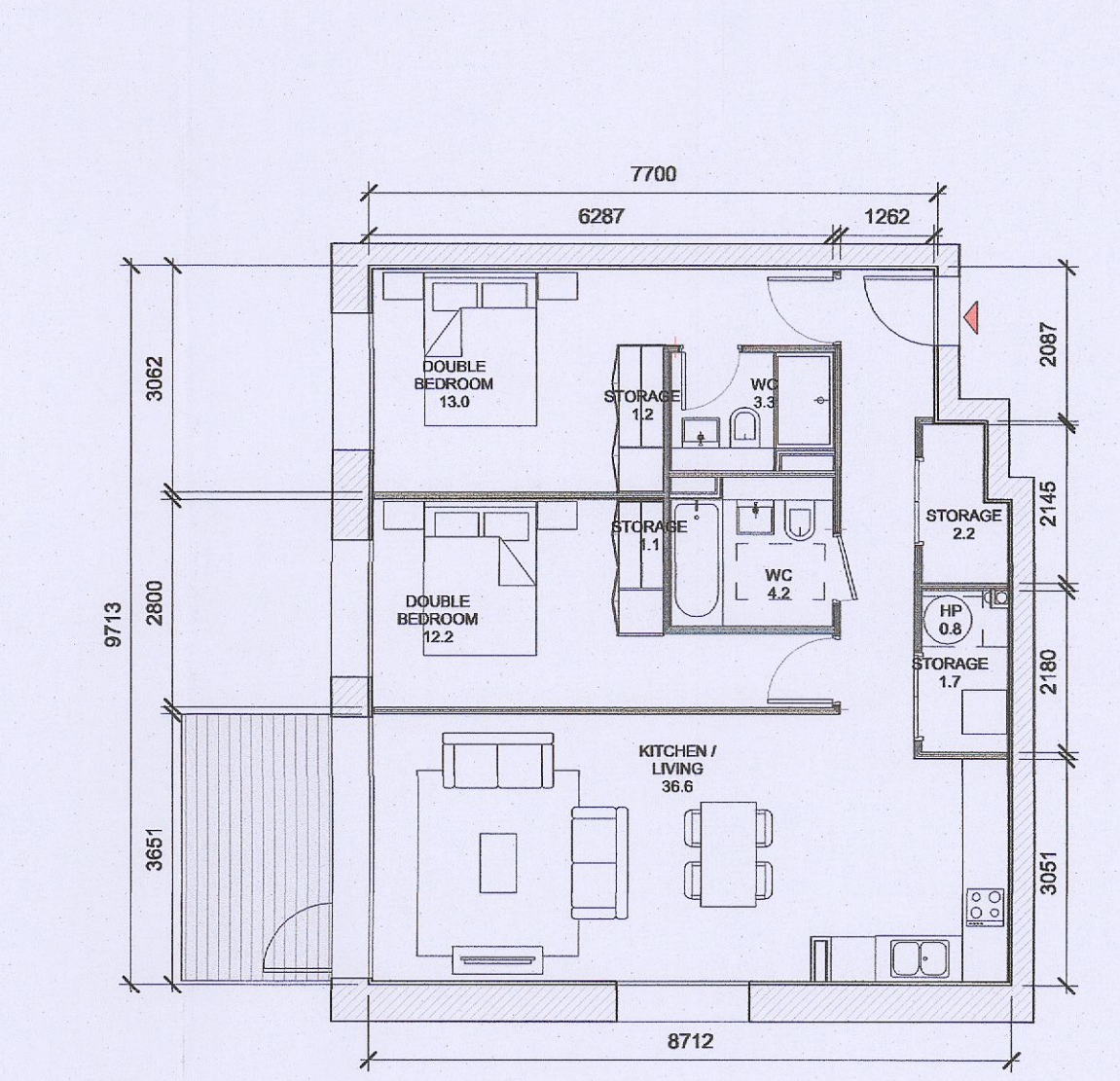
Architecture • Interiors
henryjlyons.com +353 1 888 3333 info@henryjlyons.com 51-54 Pease Street Dublin D02 K466



1 T.207 D
1:100

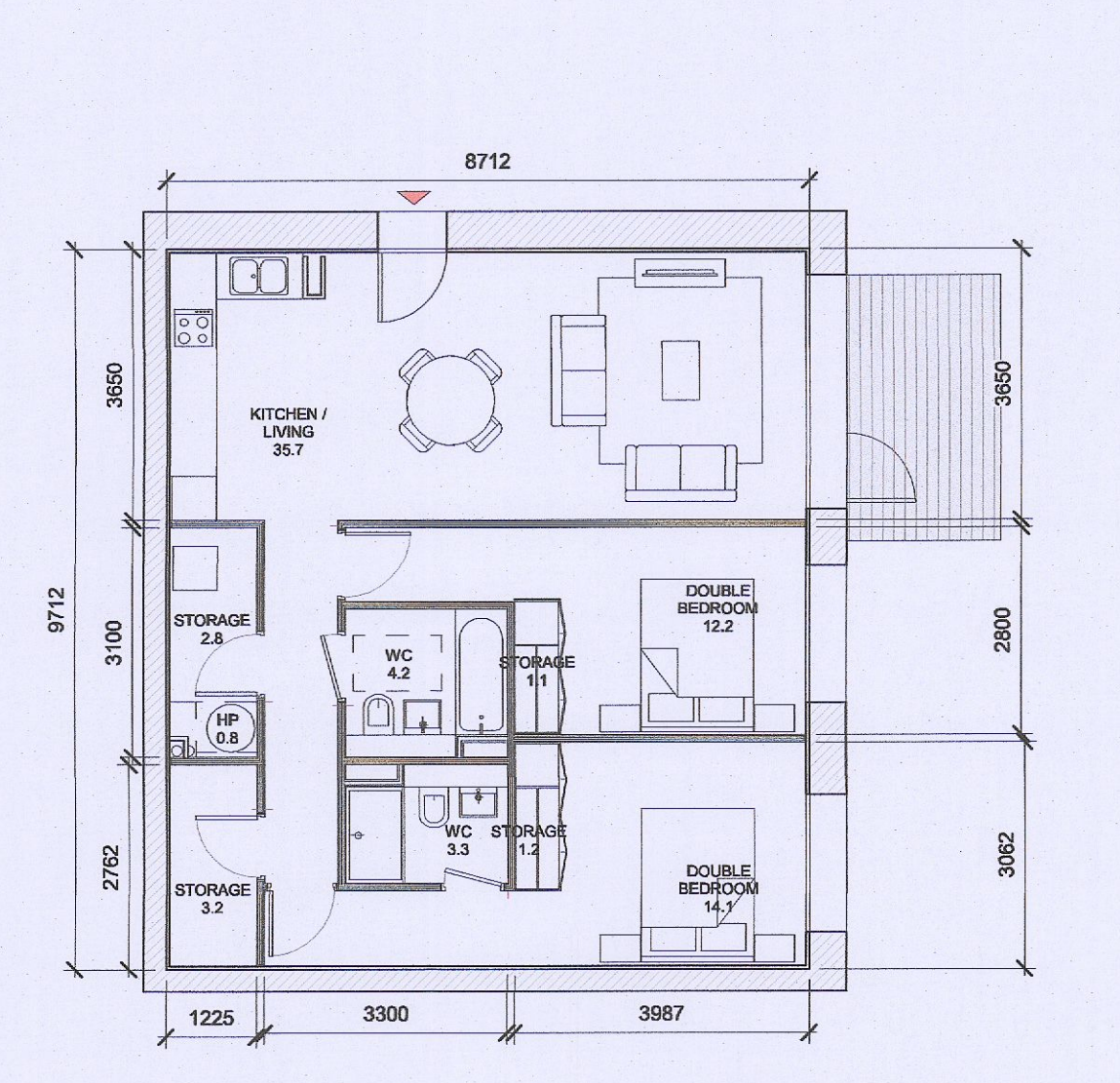
T.207_D SPACE REQUIREMENTS												
Apartment Area	Required Apartment Area	Required Area Met	Kitchen - Living Area	Required Kitchen - Living Area	Required Area Met	Total Bedroom Area	Required Total Bedroom Area	Required Area Met	Total Storage Area	Required Total Storage Area	Required Area Met	Heat Pump Area
81.6 m²	73.0 m²	Yes	36.3 m²	30.0 m²	Yes	27.5 m²	24.4 m²	Yes	6.0 m²	6.0 m²	Yes	0.9 m²

UPDATED GREEN



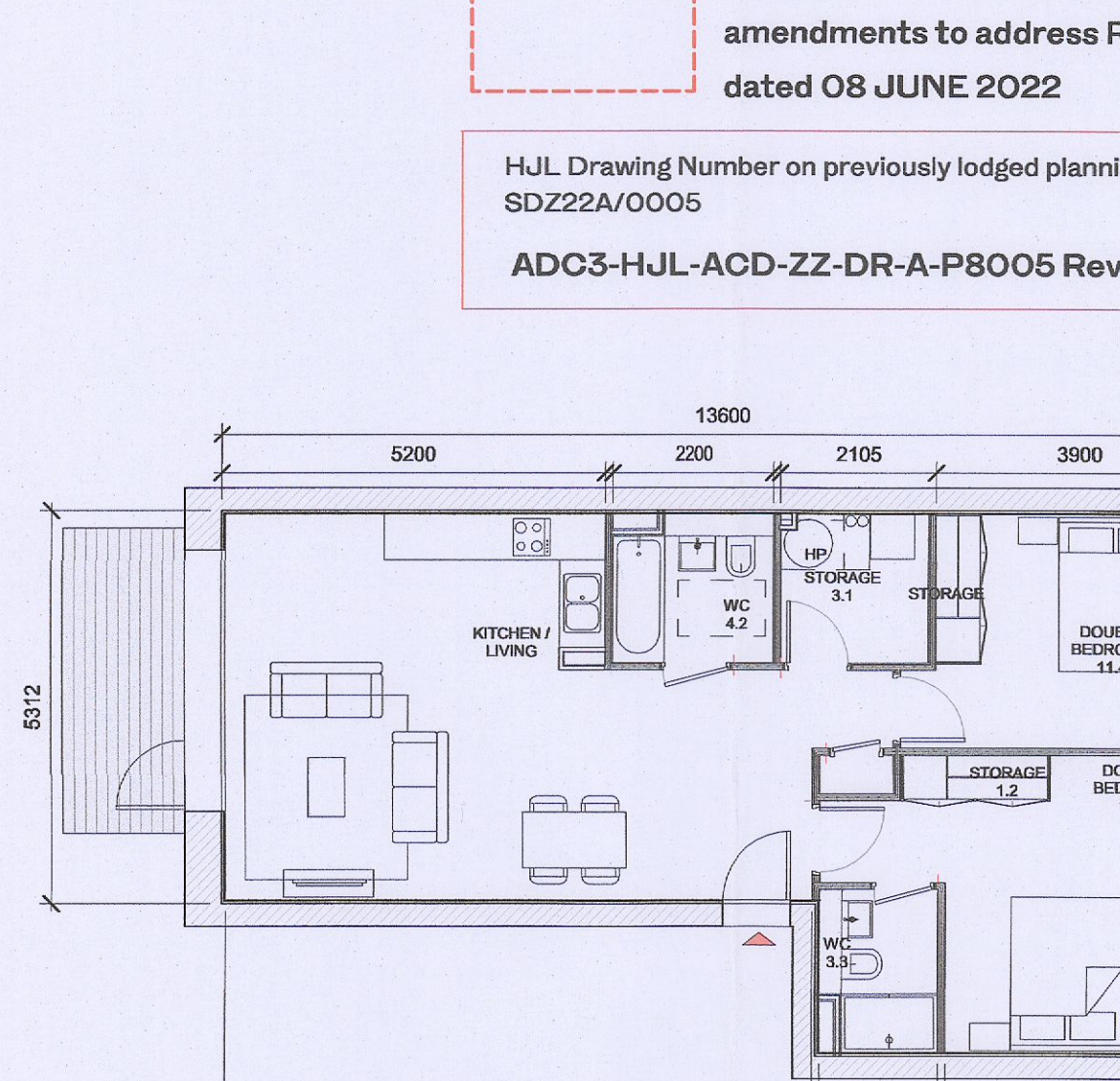
2 T.208 D
1:100

T.208_D SPACE REQUIREMENTS												
Apartment Area	Required Apartment Area	Required Area Met	Kitchen - Living Area	Required Kitchen - Living Area	Required Area Met	Total Bedroom Area	Required Total Bedroom Area	Required Area Met	Total Storage Area	Required Total Storage Area	Required Area Met	Heat Pump Area
80.3 m²	73.0 m²	Yes	36.6 m²	30.0 m²	Yes	25.2 m²	24.4 m²	Yes	6.2 m²	6.0 m²	Yes	0.9 m²



3 T.209 D
1:100

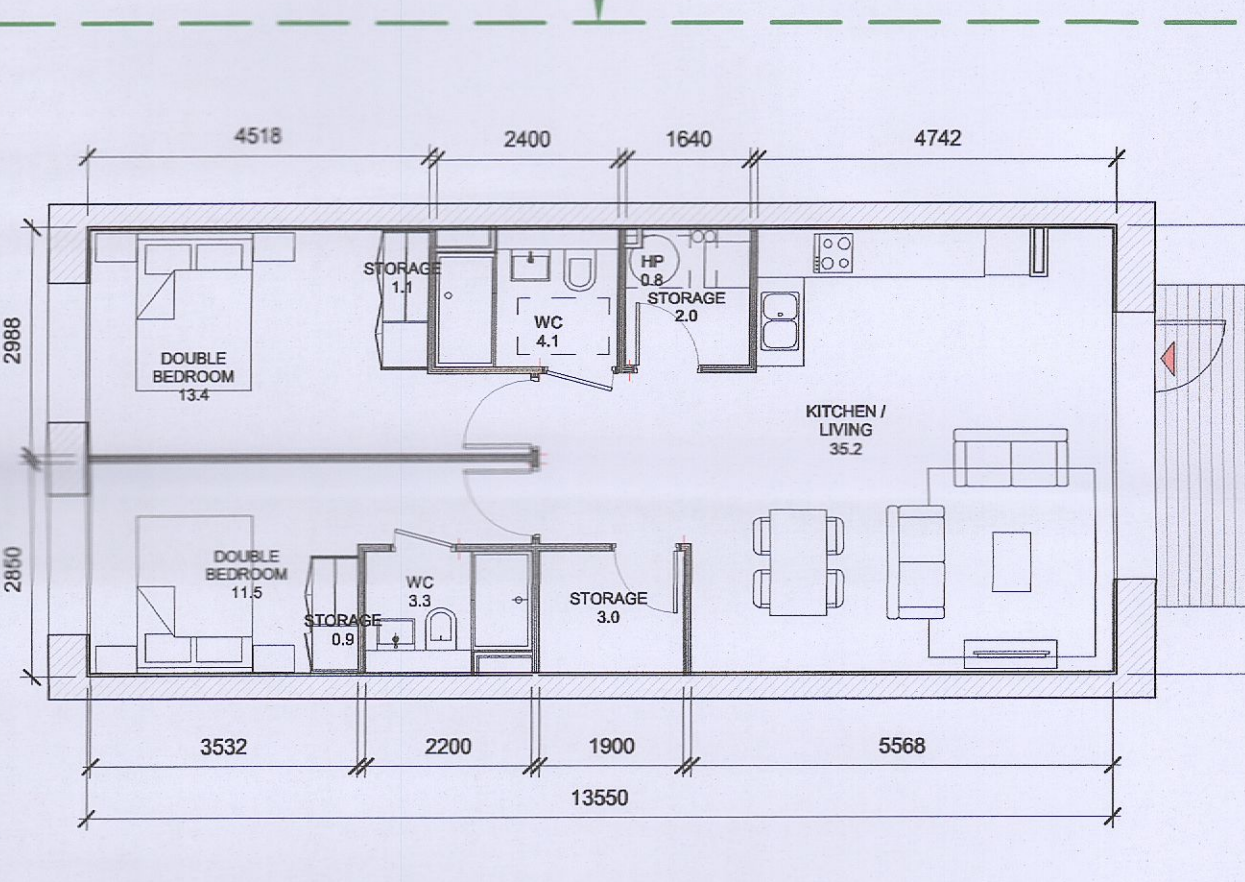
T.209_D SPACE REQUIREMENTS												
Apartment Area	Required Apartment Area	Required Area Met	Kitchen - Living Area	Required Kitchen - Living Area	Required Area Met	Total Bedroom Area	Required Total Bedroom Area	Required Area Met	Total Storage Area	Required Total Storage Area	Required Area Met	Heat Pump Area
82.8 m²	73.0 m²	Yes	35.7 m²	30.0 m²	Yes	26.3 m²	24.4 m²	Yes	8.3 m²	6.0 m²	Yes	0.9 m²



4 T.210 D
1:100

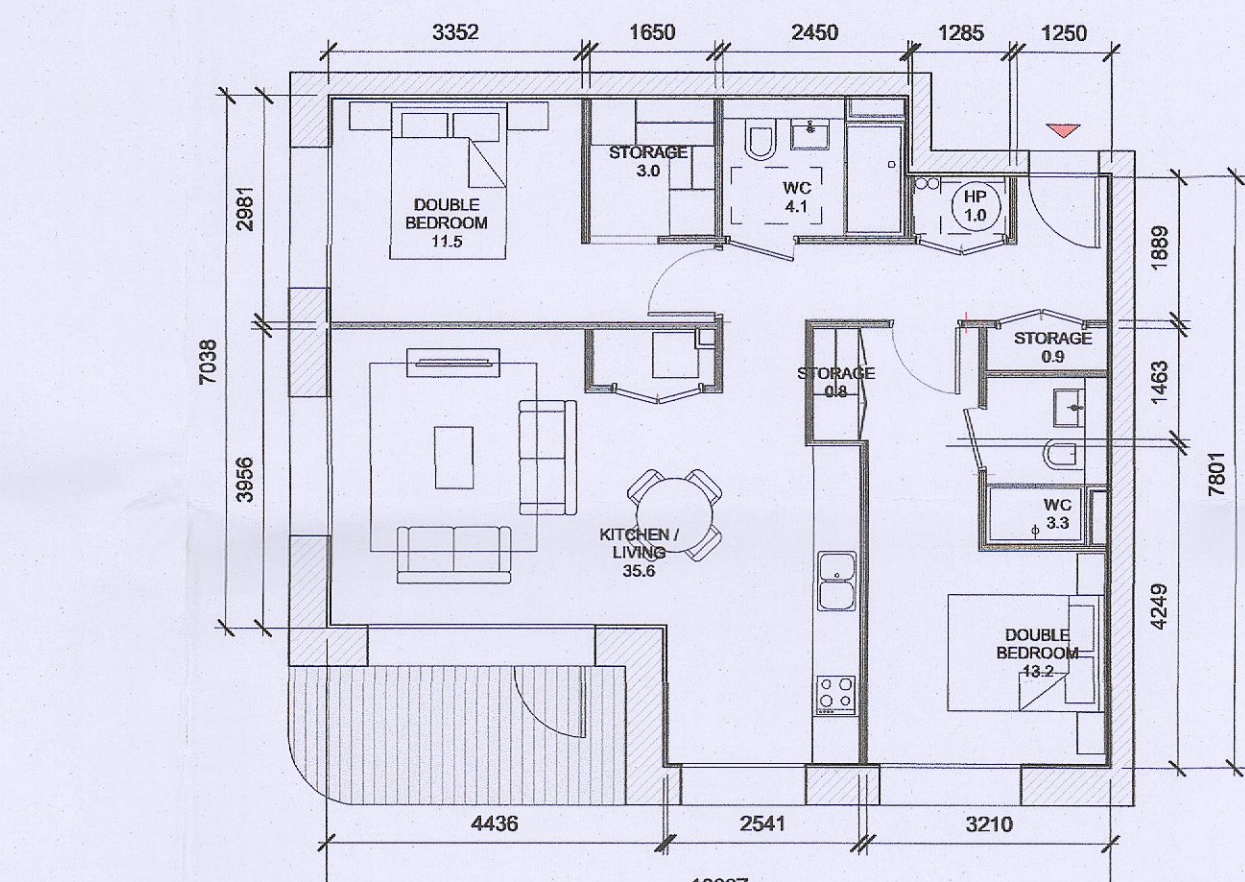
T.210_D SPACE REQUIREMENTS												
Apartment Area	Required Apartment Area	Required Area Met	Kitchen - Living Area	Required Kitchen - Living Area	Required Area Met	Total Bedroom Area	Required Total Bedroom Area	Required Area Met	Total Storage Area	Required Total Storage Area	Required Area Met	Heat Pump Area
81.5 m²	73.0 m²	Yes	36.6 m²	30.0 m²	Yes	27.4 m²	24.4 m²	Yes	6.0 m²	6.0 m²	Yes	0.9 m²

UPDATED TYPE



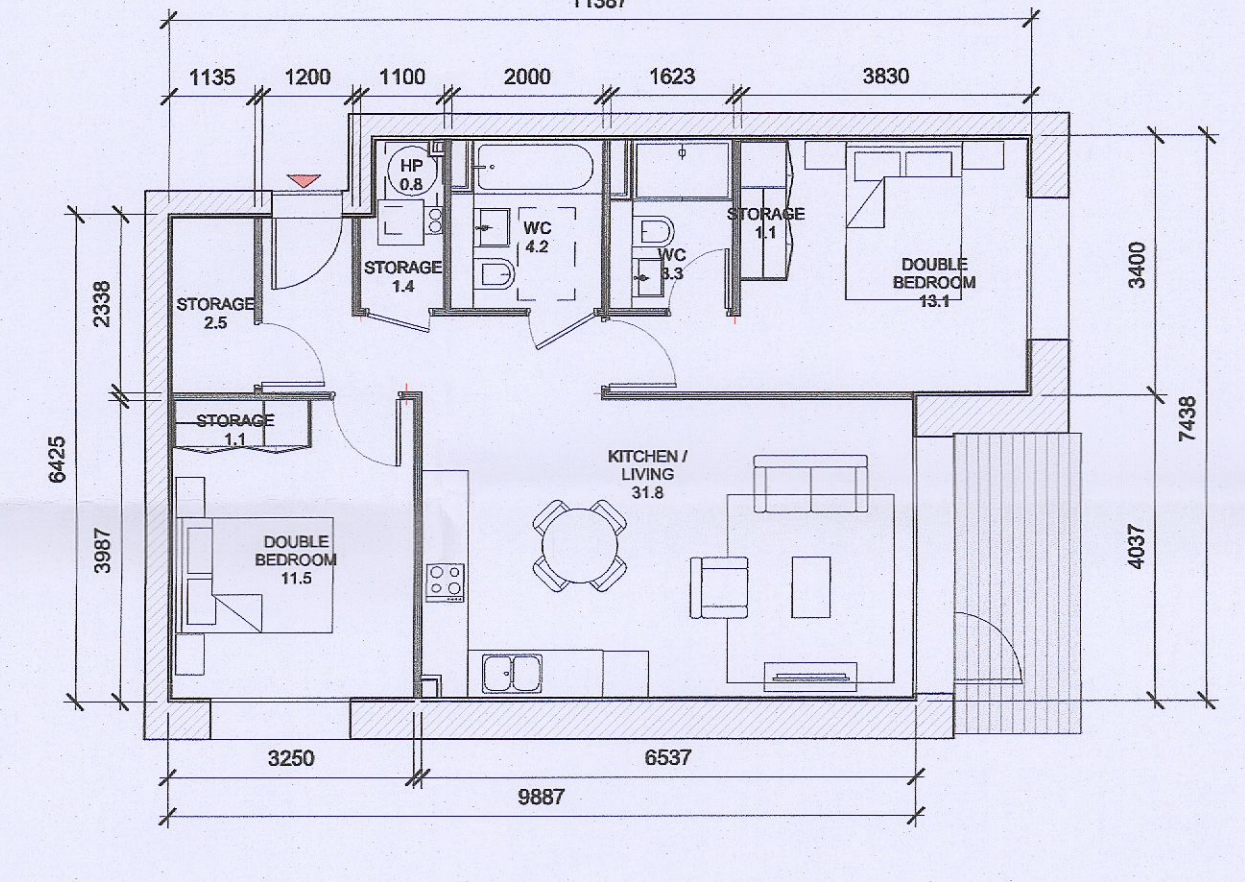
5 T.211 D
1:100

T.211_D SPACE REQUIREMENTS												
Apartment Area	Required Apartment Area	Required Area Met	Kitchen - Living Area	Required Kitchen - Living Area	Required Area Met	Total Bedroom Area	Required Total Bedroom Area	Required Area Met	Total Storage Area	Required Total Storage Area	Required Area Met	Heat Pump Area
78.8 m²	73.0 m²	Yes	35.2 m²	30.0 m²	Yes	24.9 m²	24.4 m²	Yes	7.0 m²	6.0 m²	Yes	0.9 m²



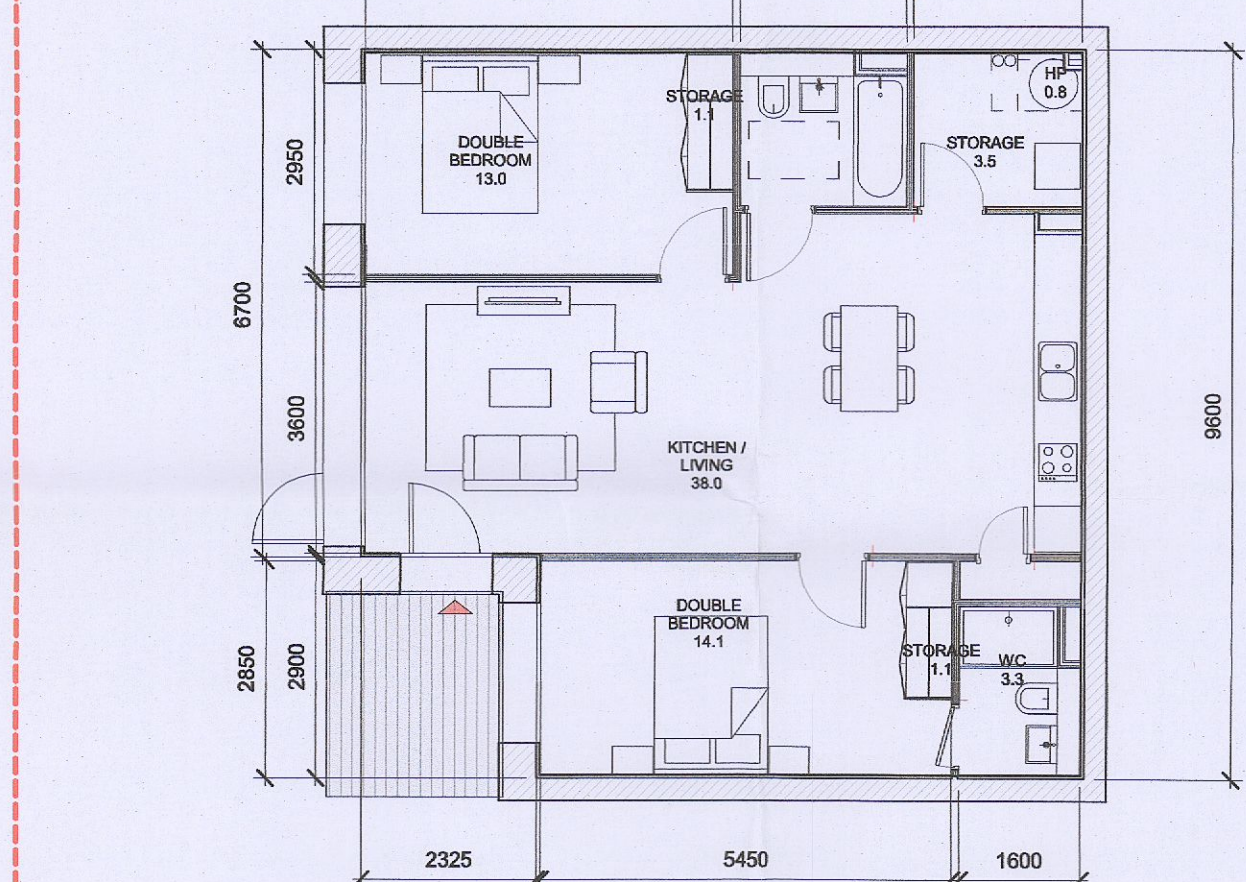
6 T.212 D
1:100

T.212_D SPACE REQUIREMENTS												
Apartment Area	Required Apartment Area	Required Area Met	Kitchen - Living Area	Required Kitchen - Living Area	Required Area Met	Total Bedroom Area	Required Total Bedroom Area	Required Area Met	Total Storage Area	Required Total Storage Area	Required Area Met	Heat Pump Area
78.9 m²	73.0 m²	Yes	35.6 m²	30.0 m²	Yes	24.7 m²	24.4 m²	Yes	6.0 m²	6.0 m²	Yes	1.0 m²



7 T.213 D
1:100

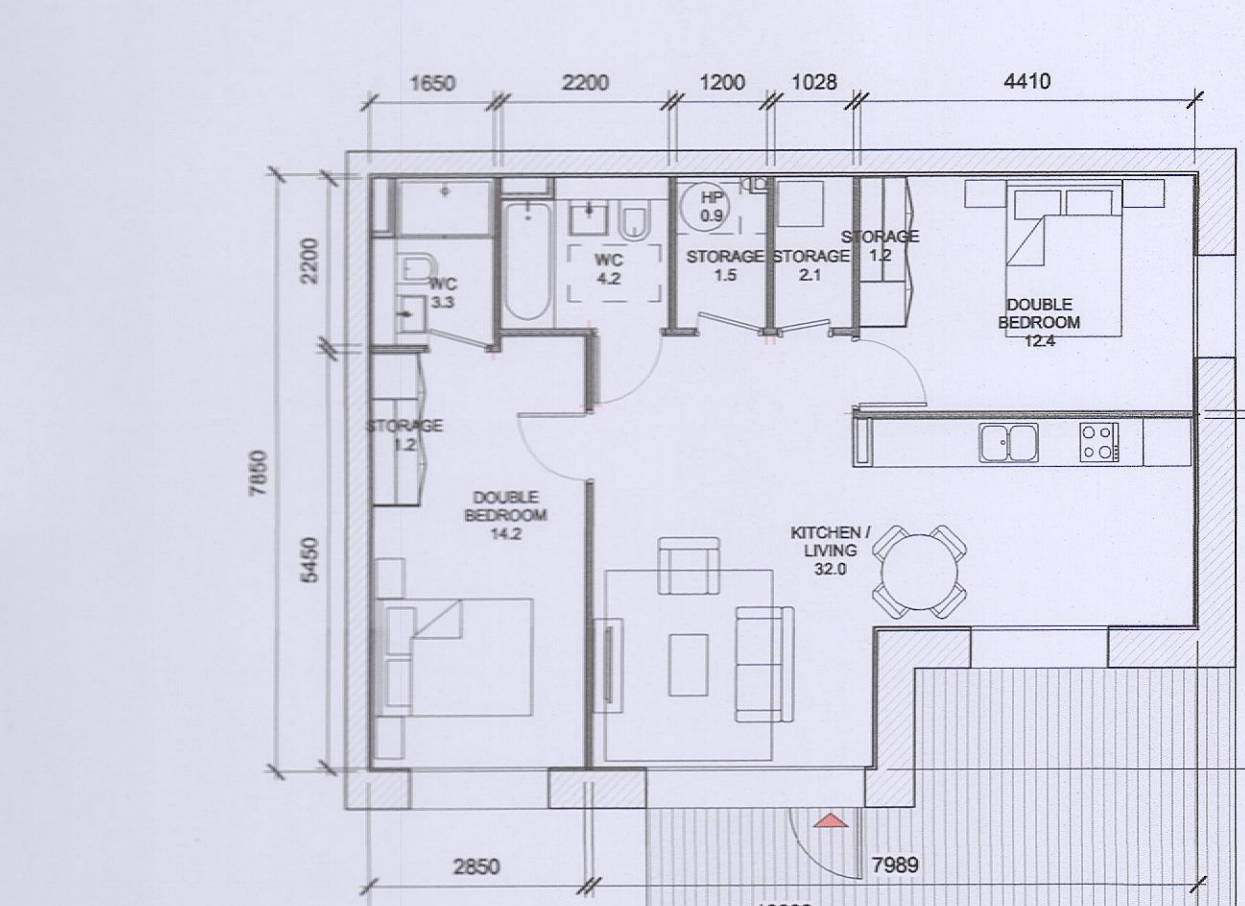
T.213_D SPACE REQUIREMENTS												
Apartment Area	Required Apartment Area	Required Area Met	Kitchen - Living Area	Required Kitchen - Living Area	Required Area Met	Total Bedroom Area	Required Total Bedroom Area	Required Area Met	Total Storage Area	Required Total Storage Area	Required Area Met	Heat Pump Area
74.0 m²	73.0 m²	Yes	31.8 m²	30.0 m²	Yes	24.6 m²	24.4 m²	Yes	6.1 m²	6.0 m²	Yes	0.9 m²



8 T.214 D
1:100

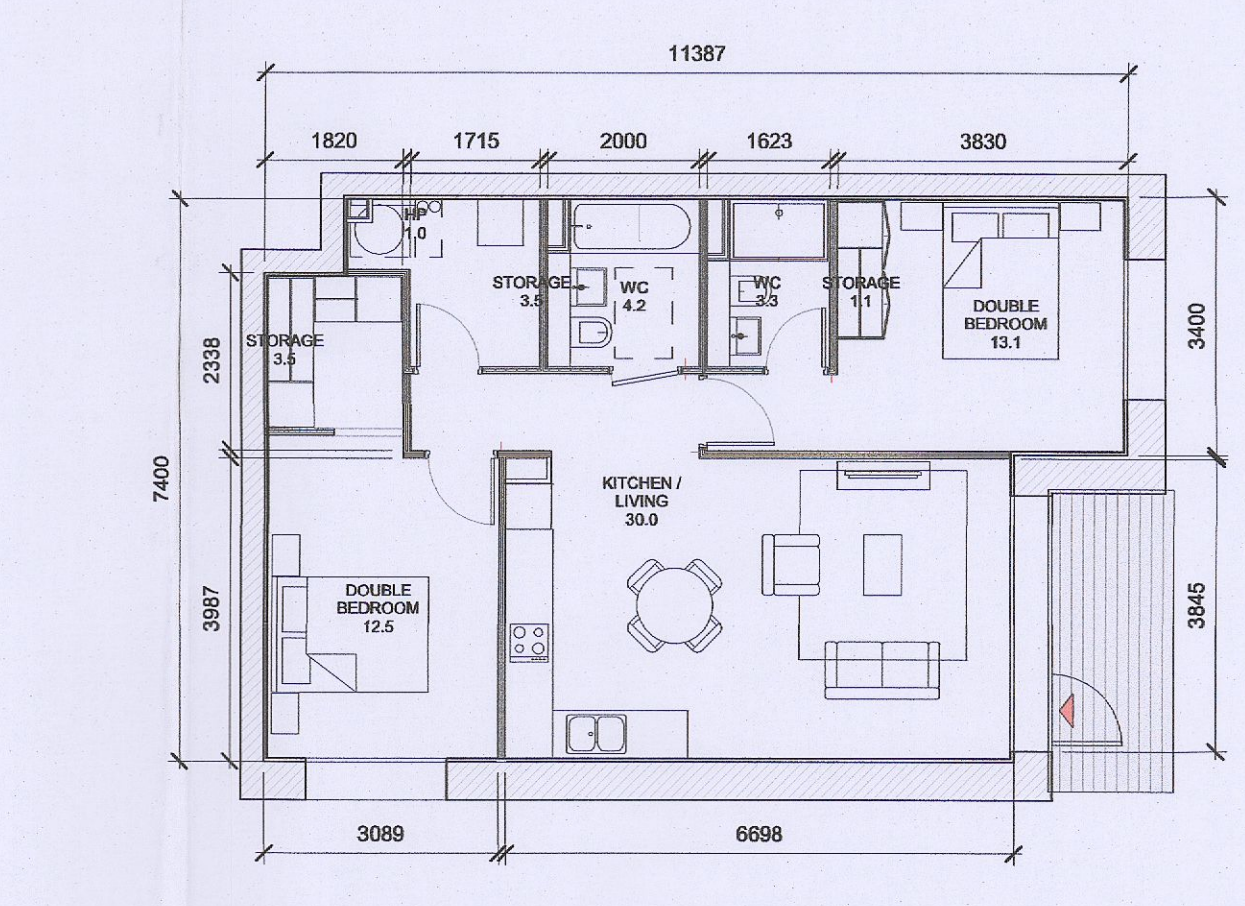
T.214_D SPACE REQUIREMENTS												
Apartment Area	Required Apartment Area	Required Area Met	Kitchen - Living Area	Required Kitchen - Living Area	Required Area Met	Total Bedroom Area	Required Total Bedroom Area	Required Area Met	Total Storage Area	Required Total Storage Area	Required Area Met	Heat Pump Area
83.3 m²	73.0 m²	Yes	38.0 m²	30.0 m²	Yes	27.1 m²	24.4 m²	Yes	6.5 m²	6.0 m²	Yes	0.9 m²

NEW TYPE AS PER FSC COMPLIANCE



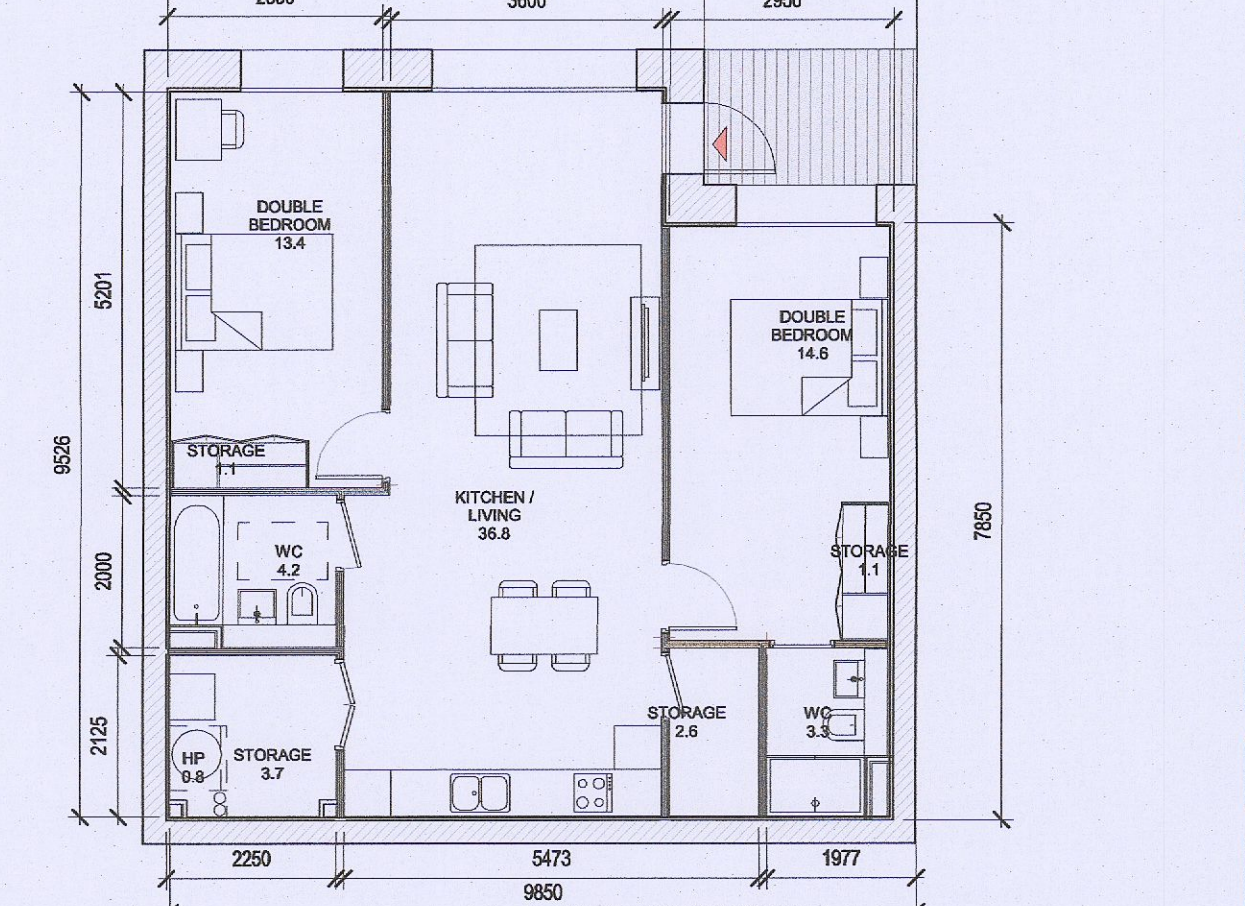
9 T.215 D
1:100

T.215_D SPACE REQUIREMENTS												
Apartment Area	Required Apartment Area	Required Area Met	Kitchen - Living Area	Required Kitchen - Living Area	Required Area Met	Total Bedroom Area	Required Total Bedroom Area	Required Area Met	Total Storage Area	Required Total Storage Area	Required Area Met	Heat Pump Area
76.3 m²	73.0 m²	Yes	32.0 m²	30.0 m²	Yes	26.6 m²	24.4 m²	Yes	6.0 m²	6.0 m²	Yes	0.9 m²



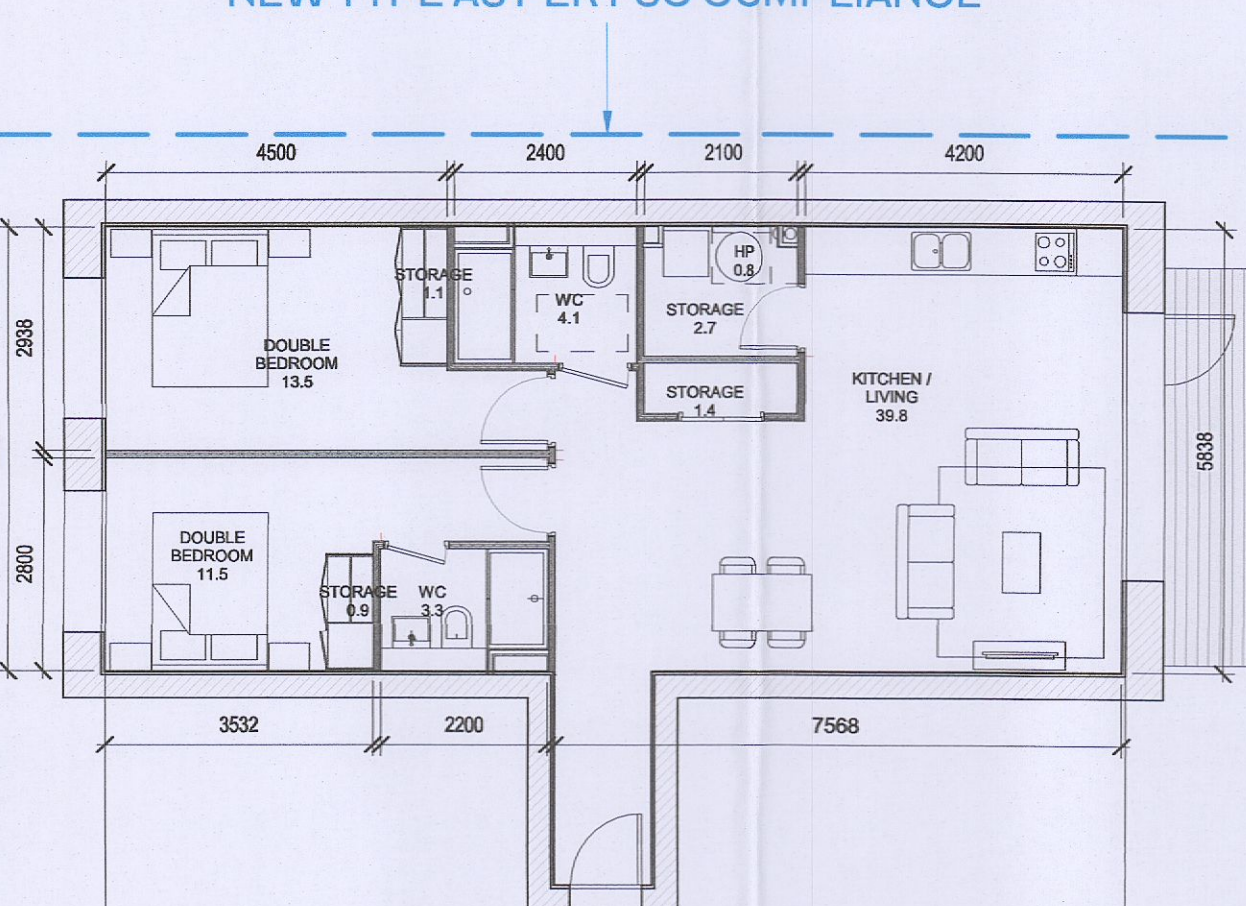
10 T.216 D
1:100

T.216_D SPACE REQUIREMENTS												
Apartment Area	Required Apartment Area	Required Area Met	Kitchen - Living Area	Required Kitchen - Living Area	Required Area Met	Total Bedroom Area	Required Total Bedroom Area	Required Area Met	Total Storage Area	Required Total Storage Area	Required Area Met	Heat Pump Area
75.7 m²	73.0 m²	Yes	30.0 m²	30.0 m²	Yes	25.6 m²	24.4 m²	Yes	8.1 m²	6.0 m²	Yes	1.1 m²



11 T.217 D
1:100

T.217_D SPACE REQUIREMENTS												
Apartment Area	Required Apartment Area	Required Area Met	Kitchen - Living Area	Required Kitchen - Living Area	Required Area Met	Total Bedroom Area	Required Total Bedroom Area	Required Area Met	Total Storage Area	Required Total Storage Area	Required Area Met	Heat Pump Area
85.2 m²	73.0 m²	Yes	36.8 m²	30.0 m²	Yes	28.1 m²	24.4 m²	Yes	8.5 m²	6.0 m²	Yes	0.9 m²



12 T.218 D
1:100

T.218_D SPACE REQUIREMENTS												
Apartment Area	Required Apartment Area	Required Area Met	Kitchen - Living Area	Required Kitchen - Living Area	Required Area Met	Total Bedroom Area	Required Total Bedroom Area	Required Area Met	Total Storage Area	Required Total Storage Area	Required Area Met	Heat Pump Area
82.4 m²	73.0 m²	Yes	40.0 m²	30.0 m²	Yes	25.0 m²	24.4 m²	Yes	6.0 m²	6.0 m²	Yes	0.9 m²