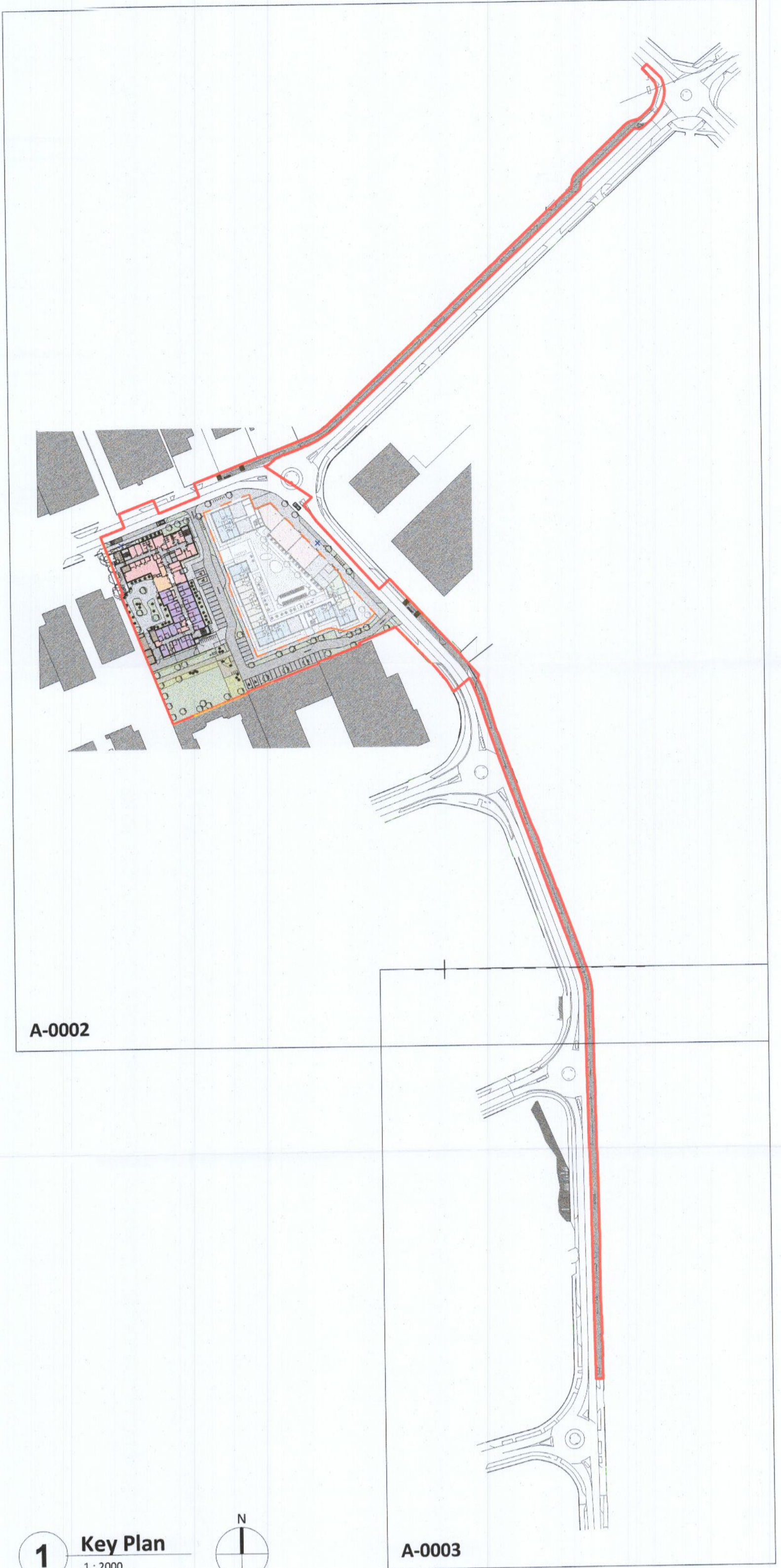
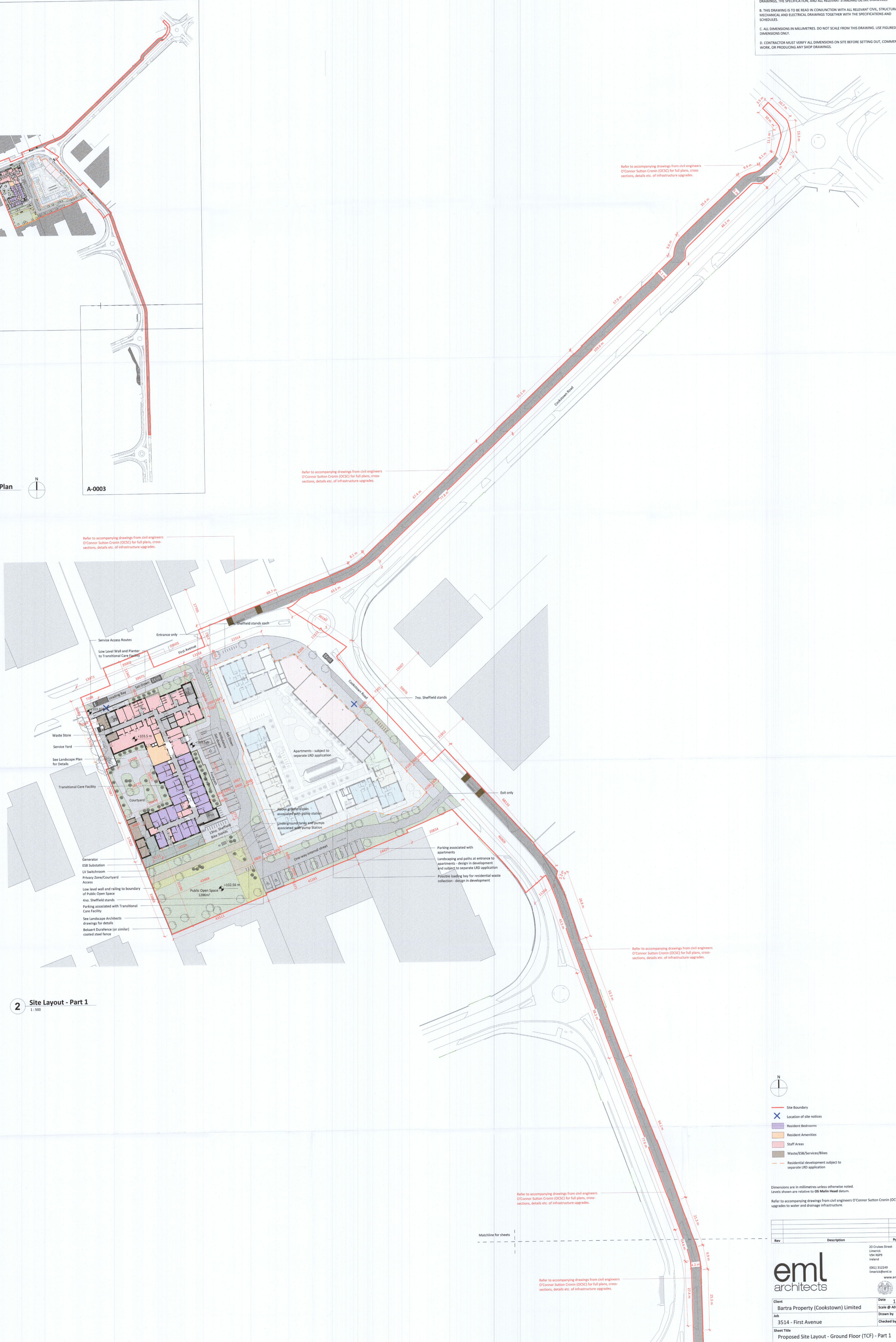


GENERAL NOTES:
 A. THIS DRAWING IS TO BE READ IN CONJUNCTION WITH ALL RELEVANT ARCHITECTURAL DRAWINGS, THE SPECIFICATION, AND ALL RELEVANT STANDARD DETAIL DRAWINGS.
 B. THIS DRAWING IS TO BE READ IN CONJUNCTION WITH ALL RELEVANT CIVIL, STRUCTURAL, MECHANICAL AND ELECTRICAL DRAWINGS TOGETHER WITH THE SPECIFICATIONS AND SCHEDULES.
 C. ALL DIMENSIONS IN MILLIMETRES. DO NOT SCALE FROM THIS DRAWING. USE FIGURED DIMENSIONS ONLY.
 D. CONTRACTOR MUST VERIFY ALL DIMENSIONS ON SITE BEFORE SETTING OUT, COMMENCING WORK, OR PRODUCING ANY SHOP DRAWINGS.



1 Key Plan
 1:2000



2 Site Layout - Part 1
 1:500

- Refer to accompanying drawings from civil engineers O'Connor Sutton Cronin (OCS) for full plans, cross-sections, details etc. of infrastructure upgrades.
- Service Access Routes
- Entrance only
- Low Level Wall and Planter to Transitional Care Facility
- Waste Store
- Service Yard
- See Landscape Plan for Details
- Transitional Care Facility
- Courtyard
- Generator
- ESB Substation
- LV Switchroom
- Privacy Zone/Courtyard Access
- Low level wall and railing to boundary of Public Open Space
- 4no. Sheffield stands
- Parking associated with Transitional Care Facility
- See Landscape Architects drawings for details
- Belcairt Durifence (or similar) coated steel fence
- Waste Store
- Service Yard
- See Landscape Plan for Details
- Transitional Care Facility
- Courtyard
- Generator
- ESB Substation
- LV Switchroom
- Privacy Zone/Courtyard Access
- Low level wall and railing to boundary of Public Open Space
- 4no. Sheffield stands
- Parking associated with Transitional Care Facility
- See Landscape Architects drawings for details
- Belcairt Durifence (or similar) coated steel fence
- Abuse ground blocks associated with pump station
- Underground tanks and pumps associated with Pump Station
- One-way internal street
- Public Open Space 1286m²
- 13no Sheffield stands
- 7no Sheffield stands
- Apartment - subject to separate LRD application
- Parking associated with apartments
- Landscaping and paths at entrance to apartments - design in development and subject to separate LRD application
- Possible loading bay for residential waste collection - design in development
- Exit only
- Refer to accompanying drawings from civil engineers O'Connor Sutton Cronin (OCS) for full plans, cross-sections, details etc. of infrastructure upgrades.
- Refer to accompanying drawings from civil engineers O'Connor Sutton Cronin (OCS) for full plans, cross-sections, details etc. of infrastructure upgrades.
- Refer to accompanying drawings from civil engineers O'Connor Sutton Cronin (OCS) for full plans, cross-sections, details etc. of infrastructure upgrades.
- Refer to accompanying drawings from civil engineers O'Connor Sutton Cronin (OCS) for full plans, cross-sections, details etc. of infrastructure upgrades.

- Site Boundary
- Location of site notices
- Resident Bedrooms
- Resident Amenities
- Staff Areas
- Waste/ESB/Services/Bikes
- Residential development subject to separate LRD application

Dimensions are in millimetres unless otherwise noted. Levels shown are relative to OS Mean Head datum.
 Refer to accompanying drawings from civil engineers O'Connor Sutton Cronin (OCS) for upgrades to water and drainage infrastructure.

Rev	Description	By	Ckd	Date

eml architects

20 Cruises Street
 Limerick
 V94 R99
 Ireland

37 Fitzwilliam P
 Dublin 2
 D02 Y152
 Ireland

(051) 312249
 (01) 6707677
 eml@eml.ie
 www.eml.ie

Client	Date	12/09/2022
Bartra Property (Cookstown) Limited	Scale @ AD	1:500
Job	Drawn by	AH
3514 - First Avenue	Checked by	TM

Sheet Title	Proposed Site Layout - Ground Floor (TCF) - Part 1
Job No.	3514
Stage	PL
Drawing No.	3514-EML-ZZ-00-DR-A-0002
Project	Originator_Done_Level_Don_Type_Role_Number
Subsidiary	S2