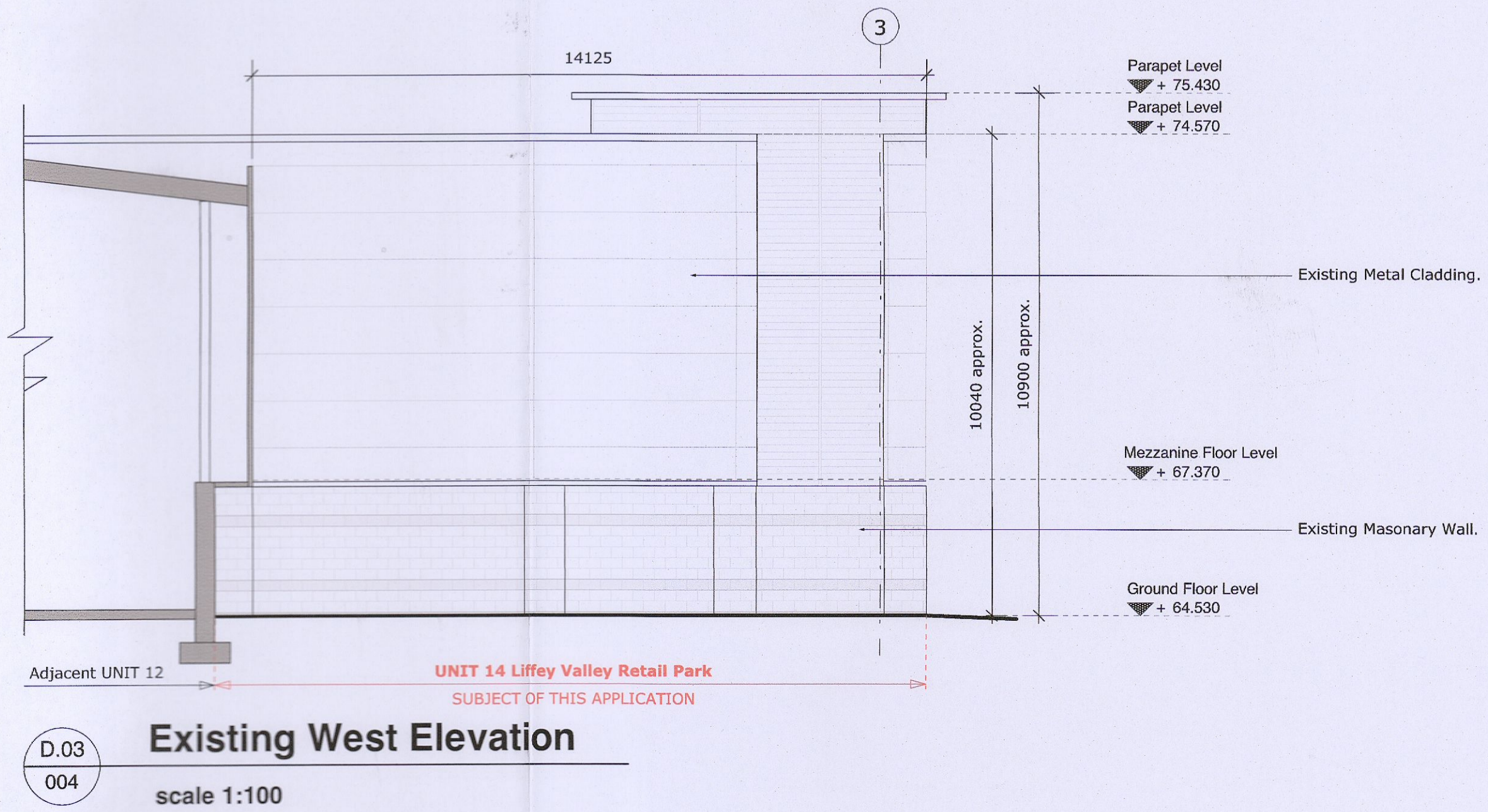
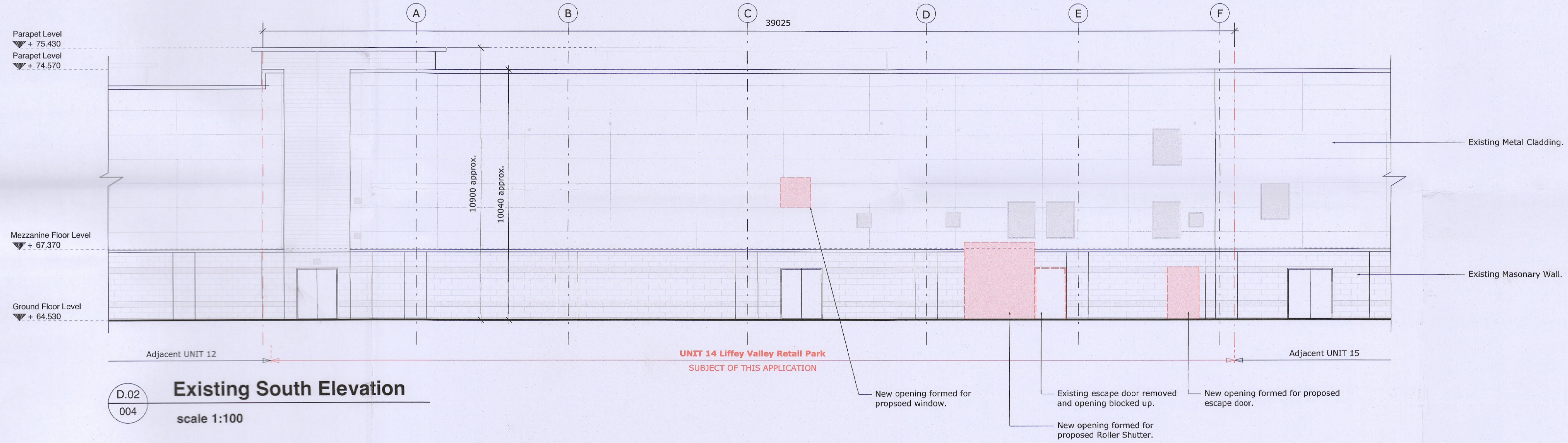
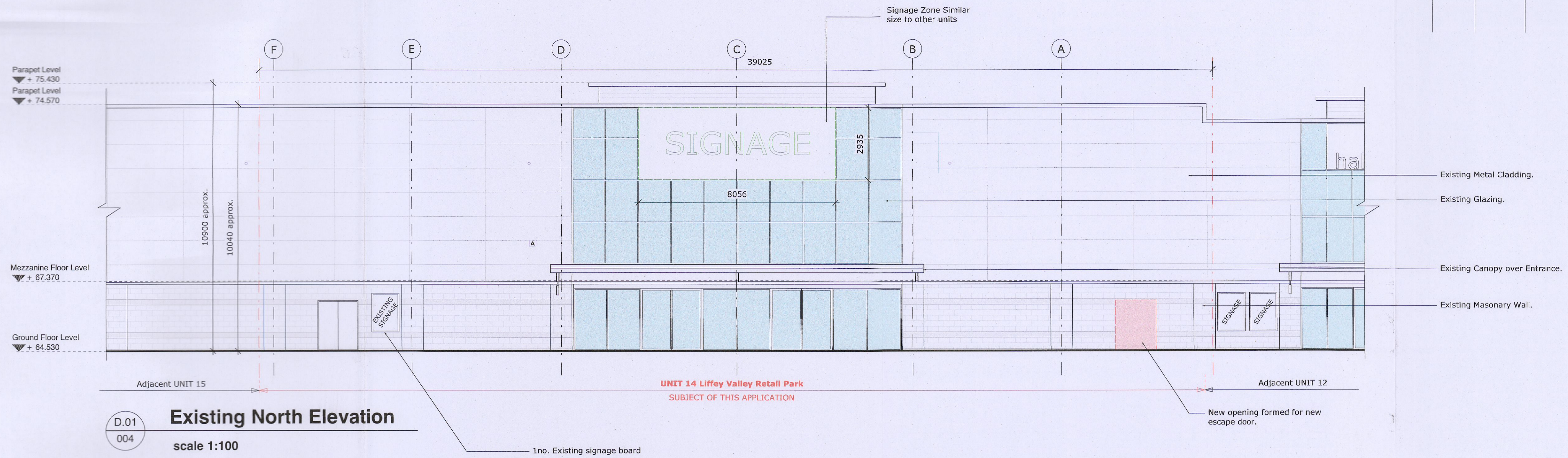


Revision	Date	Description
-	29.07.2022	Issued for Planning



studio 3 | architecture
sustainable design
urban planning
project management

Mountpleasant Business Centre, Mountpleasant Ave, Ranelagh, Dublin 6. t. 353 (0)1 496 2222, e. info@studio3.ie, www.studio3.ie

PROJECT: Subdivision of existing retail unit, Unit 14, Liffey Valley Retail Park, Dublin 22

CLIENT: Intrust Properties Company Limited By Guarantee

DRAWING: Existing Elevations

STATUS:	SCALE:	CAD REF:	REVISION:
PLANNING	1:100 @ A1	2014-PLA-004	-
DRAWN BY: M. Diver	AMENDED BY:	DRG. NO. 2014-PLA-004	
CHECKED BY: F. Doyle	ISSUED ON: 29.07.2022		

THIS DRAWING IS COPYRIGHT.

DO NOT SCALE.

USE FIGURED DIMENSIONS ONLY