

Copyright : All creative artwork, landscape symbology, text, legends, specifications, descriptions and illustrations used in our drawings and reports are the intellectual property of **ait** urbanism + landscape ltd. and are not to be reproduced by others.

LEGEND

Hard Landscape

- Hard Blinding Gravel:**
50mm depth wearing course of 6mm down to dust Ballyluk aggregate or equivalent buff coloured aggregate.
- Concrete to Public Realm Footpaths:**
Brushed finish.
- Concrete to Residential Courtyard Footpaths:**
Laid in panels with sawn out expansion joints. Exposed aggregate finish.
- Carriageway:**
Bitumen macadam.
- Coloured Asphalt to Public Open Space:**
Buff or HRA with Granite Chip.
- Black Paving to Public Open Space:**
Atrio by Tobemore 220x55x80mm or equivalent.
- Natural stone setts:**
Silver granite, 100 x 100 x 100mm depth. Bush-hammered finish, sawn all sides. Max. 10mm joint size.
- Permeable Paving Blocks (To parking spaces):**
"Claspstone" by Kilsaran or equivalent. 200 x 100 x 80mm depth precast concrete (PCC) setts. Colour: Charcoal.
- Paving to Private Terraces - Paving Blocks:**
"Shelbourne" by Kilsaran or equivalent. 600 x 300 x 50mm depth precast concrete (PCC) paviours with a granite aggregate finish. Colour: Silver Granite.
- Paving to Courtyard Terrace:**
"Pomeroke Flag" by Kilsaran or equivalent. Black granite, 5 size mix.
- Paving to Southern Core Building Entrances:**
"Newgrange" by Kilsaran or equivalent. 3 size mix, 60mm depth precast concrete (PCC) paviours. Colour: Silver Granite.
- Large format concrete feature steps with salvaged in-situ concrete from existing site**
- Residential Play Area Surfacing - 60eqm:**
Sand and/or softfall.
- Play Area Safety Surfacing - Grass Matting:**
Safe Matting or equivalent.

Furniture

- Bespoke solid oak bench:**
Solid oak benches with backrests and intermediate armrests.
- Bespoke timber edge seating to courtyard island planters:**
Hardwood timber with backrests and intermediate armrests.
- Sheffield cycle stands:**
x36 stainless steel cycle stand by Omco or equivalent.
- Moveable Tables & Chairs:**
Steel frame bistro style table & chairs sets in select colours.
- Erratics:**
Feature glacier boulders.
- Island Planter:**
Aluminum edge, 100mm high.
- Climbers on steel wire trellis:**
See accompanying Landscape Report for details.

Play Equipment

- "Seesaw" Play Equipment**
by Kompan or equivalent
- "Springer" Play Equipment**
by Kompan or equivalent
- Timber Balance Beam and Stump Play Elements**

Boundaries

- 2.4m high Paladin striped mesh fencing:**
See accompanying Landscape Report for details.
- Proposed low level wall and galvanneal and painted mild steel railings:**
To consulting architect's detail and specification.
- Low level wall:**
To consulting architect's detail and specification.
- Proposed 2.0 m high rendered block work wall:**
See accompanying Landscape Report for details.
- Existing boundary to be retained.**

Lighting

- 5m high lighting column:**
See accompanying Lighting Consultant's report for details.

Soft Landscape

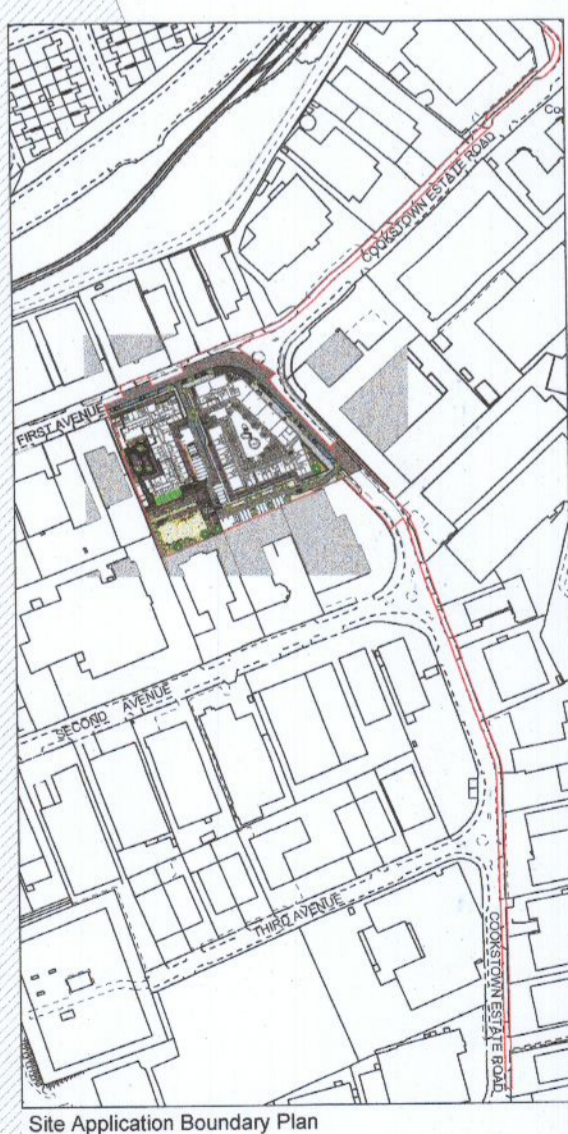
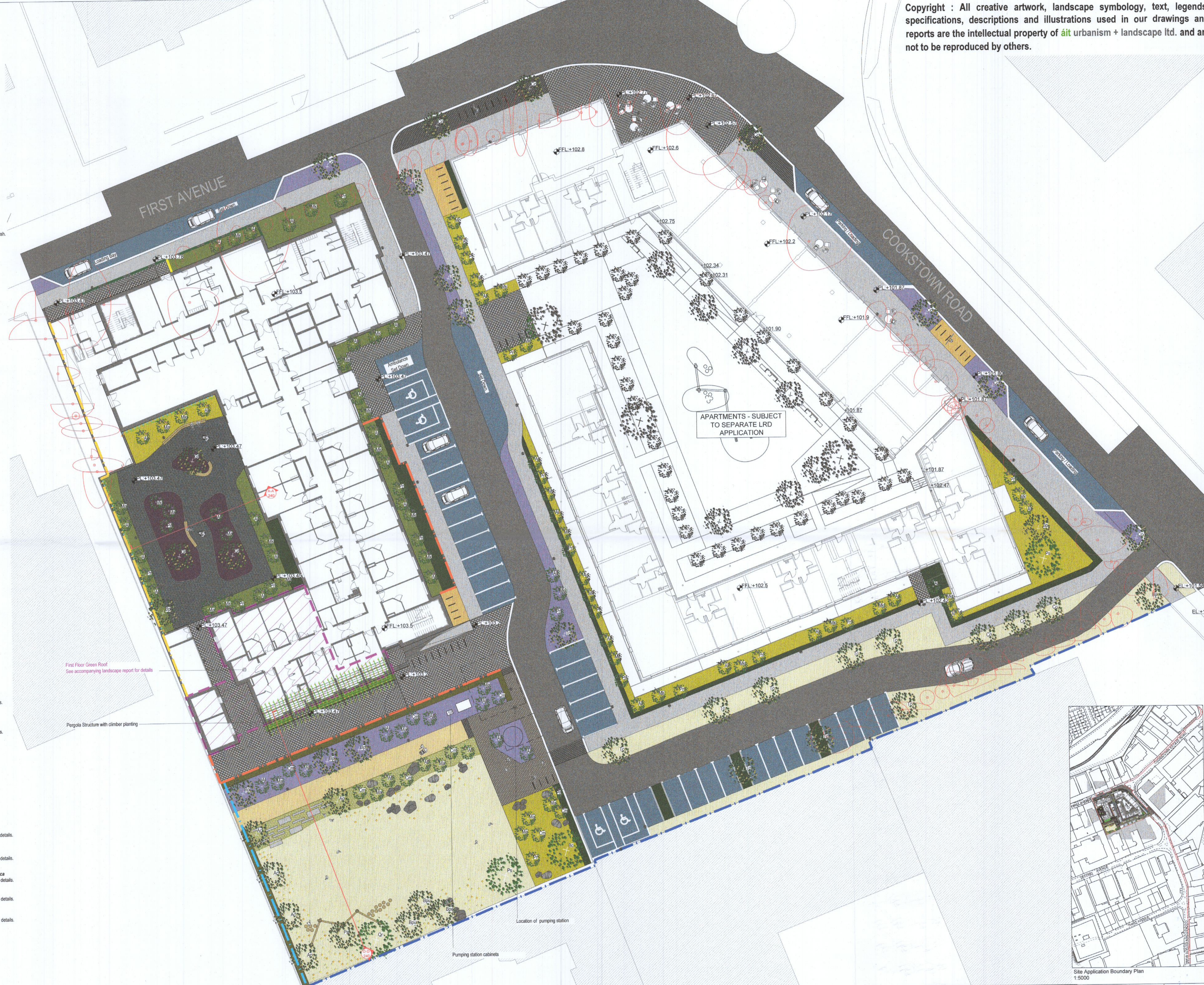
- Semi-mature & Extra Heavy Standard tree planting**
- Bc: *Betula costata*, 2 x tr / wrb / 30-35cmg.
 - Ct: *Cedrela trichanthos*, 2 x tr / wrb / 30-35cmg.
 - Qp: *Quercus palustris*, 2 x tr / wrb / 30-35cmg.
 - Qr: *Quercus robur*, 2 x tr / wrb / 30-35cmg.
 - Ps: *Pinus sylvestris*, 2 x tr / wrb / 30-35cmg.
 - Ac: *Acer campestre*, 2 x tr / wrb / 18-20cmg.
 - Cc: *Corylus colurna*, 2 x tr / wrb / 18-20cmg.
 - Bp: *Betula pendula*, 2 x tr / wrb / 18-20cmg.
 - Bpa: *Betula pubescens*, 2 x tr / wrb / 18-20cmg.
 - Ct: *Cedrela trichanthos*, 2 x tr / wrb / 20-25cmg.
 - Pa: *Prunus avium*, 2 x tr / wrb / 18-20cmg.
 - Qr: *Quercus robur*, 2 x tr / wrb / 18-20cmg.
 - Tc: *Tilia cordata* 'Greenspire', 2 x tr / wrb / 16-18cmg.
- Small trees / specimen shrubs**
- Al: *Amelanchier lamarckii*, multi-stem / 14 x tr / wrb / 2.5-3m ht.
 - Cm: *Crataegus monogyna*, multi stem, min. 5 breaks, 2 x tr, wrb, 2.0-2.5m h., 1.5m s.
 - Mk: *Magnolia kobus*, multi-stem / 9 x tr / wrb / 2.5-3m ht.
 - Ma: *Malus* 'Winter Gold' multi stem, min. 5 breaks / 2 x tr / wrb / 2.0-2.5m h., 1.5m s.
 - Pr: *Prunus serotina* 'Branklyn', multi-stem / 13 x tr / wrb / 2.5-3m ht.
- Ornamental Grasses/Perennials Mix A**
See accompanying Landscape Report for details.
 - Ornamental Grasses/Perennials Mix B**
See accompanying Landscape Report for details.
 - Sensory Planting Mix**
See accompanying Landscape Report for details.
 - Shade Tolerant Mix**
See accompanying Landscape Report for details.
 - Front Garden Mix**
See accompanying Landscape Report for details.
 - Meadow Mix**
See accompanying Landscape Report for details.
 - Native Hedging**
See accompanying Landscape Report for details.
 - Clipped Evergreen Hedging**
- *Ilex crenata* / *Ilex Blue Princess* /
See accompanying Landscape Report for details.
 - Clipped Evergreen Hedging**
- *Buxus sempervirens* / *Prunus lusitanica*
See accompanying Landscape Report for details.
 - Climber Planting**
See accompanying Landscape Report for details.
 - Bulb Planting**
See accompanying Landscape Report for details.
 - Mown Lawn**

Abbreviations:
xtr: number of transplants in nursery
h: height
spr: spread
wrb: wire root-balled
cmg: girth of tree in centimeters measured 1m above ground
2tr cg: plants supplied in 2 litre volume containers

This drawing is the copyright of ait urbanism + landscape. Unless otherwise stated all dimensions are in millimetres. Where dimensions are not given, drawings must not be scaled and the reader must refer to the Landscape Architect. If the drawing includes conflicting details/dimensions the matter must be referred to the Landscape Architect. All dimensions must be checked on site. The Landscape Architect must be informed, by the Contractor, of any discrepancies before work proceeds.

DATE	REV.	DESCRIPTION	DRAWN BY	CHECKED BY

NOTES:



ait
urbanism + landscape

3rd Floor Newmarket House,
Newmarket Square,
Dublin 8
Ireland
t + 353 85 173622
www.aiturbanism.com

ISSUE STATUS:
PLANNING

DRAWING NO: 21SD01-DR-200

CLIENT: Bartra Property Cookstown Limited

PROJECT: Transitional Care Facility at Unit 21 First Avenue, Cookstown Industrial Estate, Dublin 24

DRAWING: Landscape Plan

1st ISSUE: 15.09.2022

REVISION: -

DRAWN BY: AD

PROJECT NO: 21SD01

SCALE: 1:250

SHEET SIZE: A1

NORTH

CHECKED BY: RJ