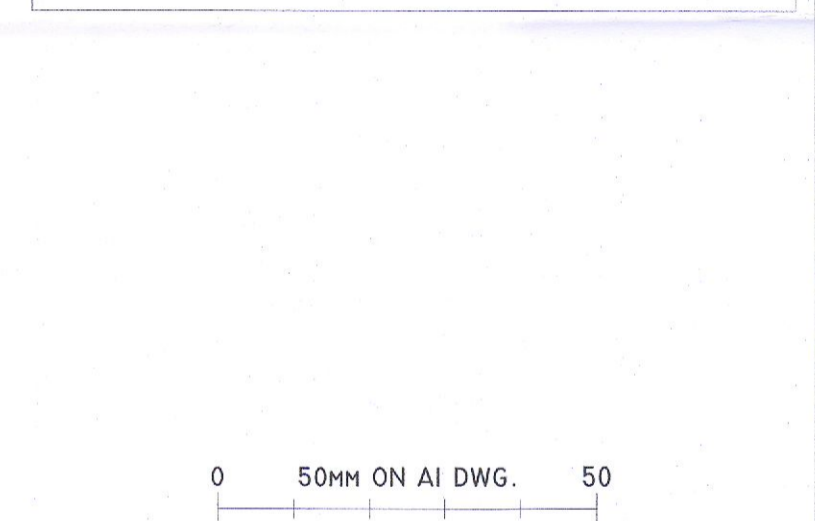


GENERAL NOTES

- DO NOT SCALE THIS DRAWING. WORK ONLY TO FIGURED DIMENSIONS.
- FOR ALL RELEVANT NOTES, REFER TO STRUCTURAL AND CIVIL ENGINEERING PERFORMANCE SPECIFICATION.
- ANY DISCREPANCIES ARE TO BE REPORTED TO PINNACLE CONSULTING ENGINEERS IMMEDIATELY.
- THIS DRAWING IS TO BE READ IN CONJUNCTION WITH ALL OTHER RELEVANT ENGINEERS, ARCHITECTS AND SUB-CONTRACTORS DRAWINGS AND DETAILS.

LEGEND

- PROPOSED PRIVATE SURFACE WATER SEWER
- PROPOSED PRIVATE FOUL SEWER (TYPE S8)
- EXISTING PRIVATE FOUL WATER SEWER
- EXISTING PRIVATE SURFACE WATER SEWER
- EXISTING PUBLIC FOUL SEWER
- EXISTING PUBLIC SURFACE WATER SEWER
- SURFACE WATER LAND DRAIN
- MANHOLE BACKCROP
- DRAINAGE CHANNEL
- DRAINAGE RUN TO BE ABANDONED
- INTERNAL FOUL GULLY PIPE
- ROAD GULLY
- ROOFING PILE
- FOUL DRAINAGE HOUSE CONNECTION
- SOIL VENT PIPE
- SOB STACK
- AIR ADMITTANCE VALVE
- FOUL INTERCEPTOR TRAP
- RANWATER DOWNPIPE
- SPRINKLER WATER DOWNPIPE
- PROPOSED LEVEL
- EXISTING TIE IN LEVEL
- EXISTING LEVEL
- SITE BOUNDARY
- ATTENUATION TANK
- 1:60 SURFACE SLOPE
- PROPOSED EXTERNAL ROAD UPGRADE



POI	PLANNING	FJVR	SO'R	SEP 2022
REV	DESCRIPTION	BY	CHK	DATE

CLIENT
CAPAMI LTD

PROJECT
**OLDCOURT
OCIL 4**

DRAWING TITLE
**PROPOSED FOUL & SURFACE
WATER DRAINAGE LAYOUT
SHEET 1 OF 2**

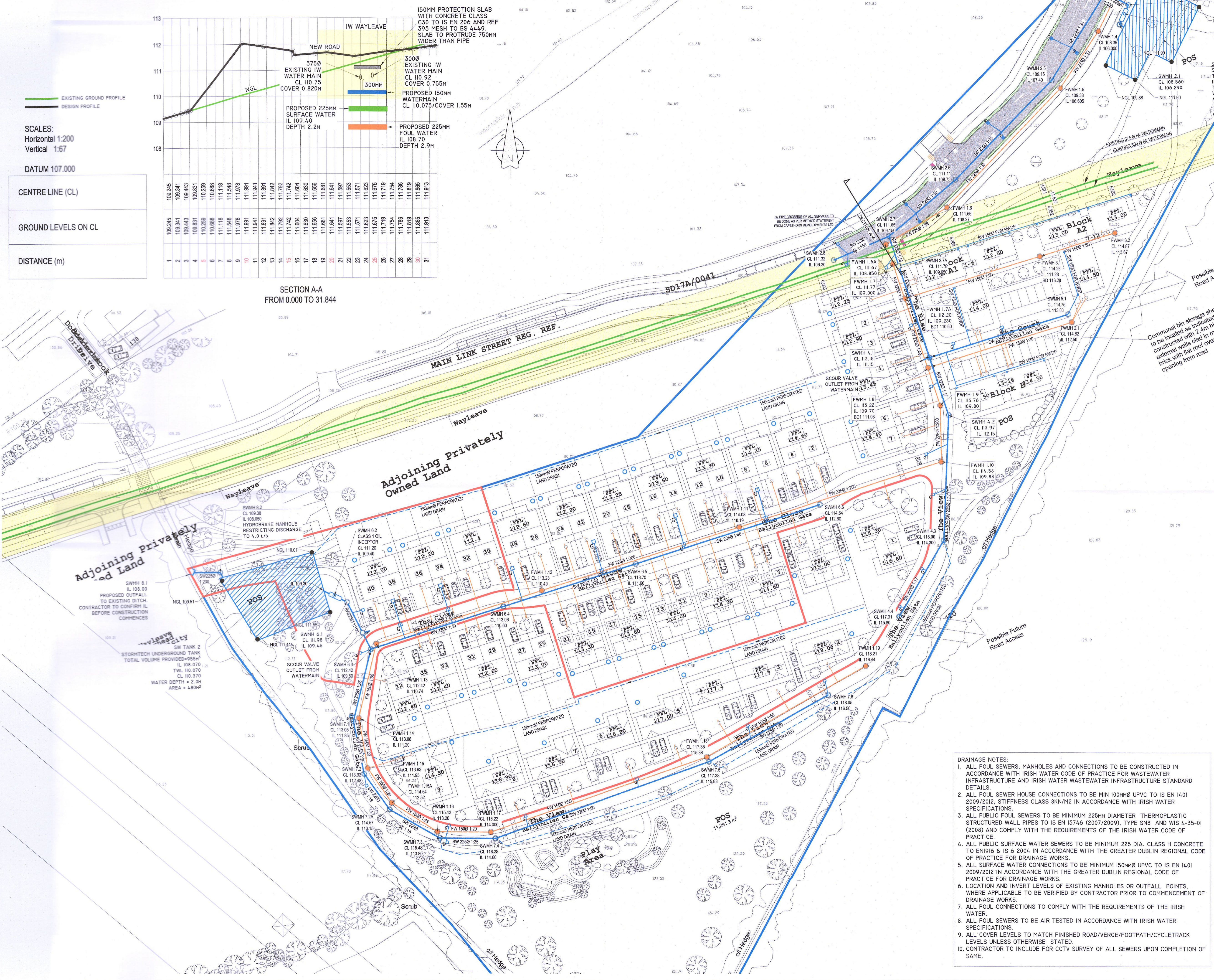
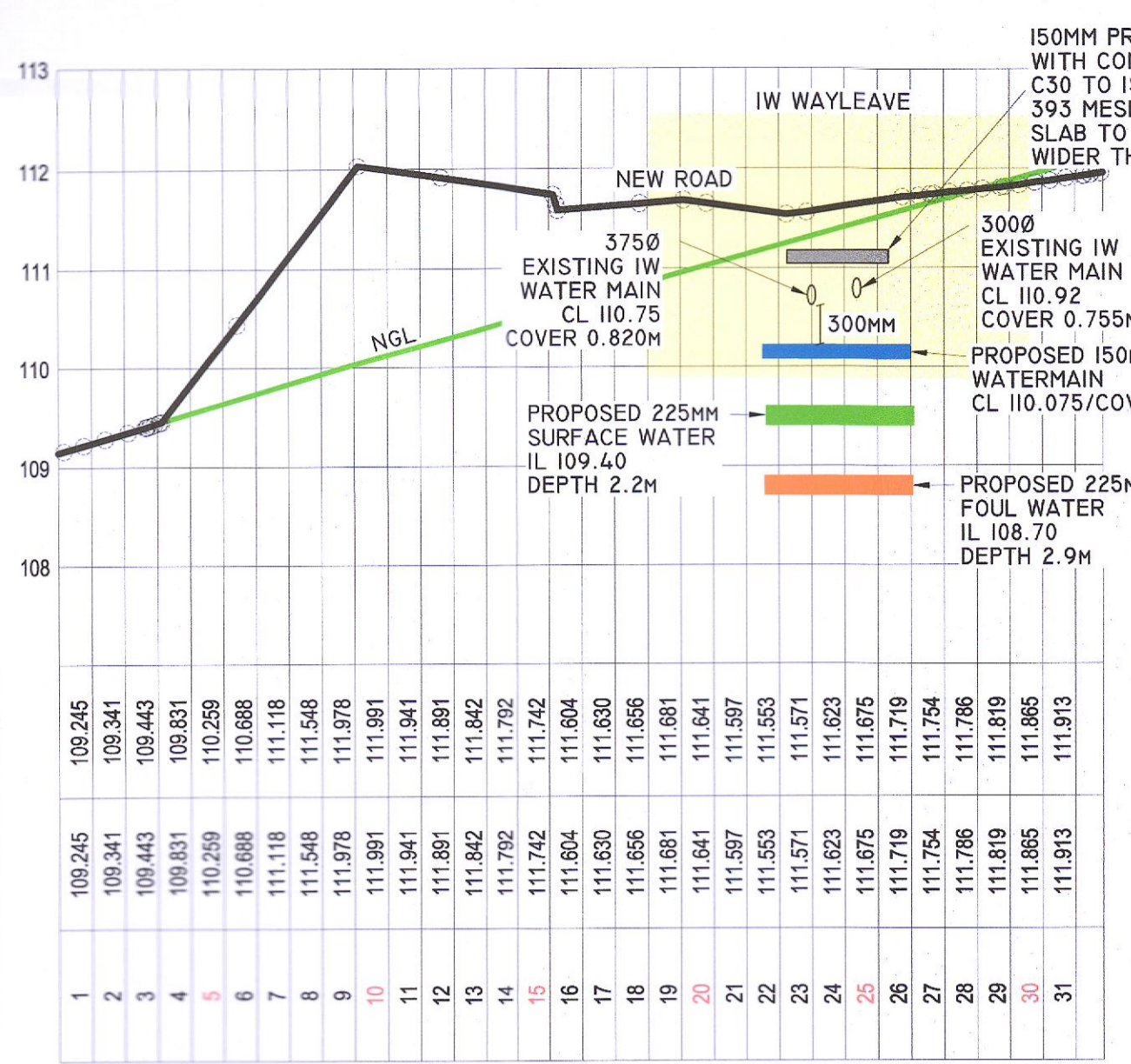
**PINNACLE
CONSULTING ENGINEERS**

GROSVENOR COURT,
67A PATRICK STREET,
DUN LAOGHAIRE,
COUNTY DUBLIN
IRELAND. TELEPHONE: +353 1231 1041
WELWYN GARDEN CITY | NORWICH | LONDON | THE HAGUE

DRAWING STATUS

PLANNING			
SCALE @ AI	DATE	DRAWN BY	CHECKED
1:500	SEP' 22	FJVR	SO'R
DRG NO.	REVISION		
P190302-257	P01		

COPYRIGHT PINNACLE



- DRAINAGE NOTES:**
- ALL FOUL SEWERS, MANHOLES AND CONNECTIONS TO BE CONSTRUCTED IN ACCORDANCE WITH IRISH WATER CODE OF PRACTICE FOR WASTEWATER INFRASTRUCTURE AND IRISH WATER WASTEWATER INFRASTRUCTURE STANDARD DETAILS.
 - ALL FOUL SEWER HOUSE CONNECTIONS TO BE MIN 100mmØ UPVC TO IS EN 1401 2009/2012, STIFFNESS CLASS 8KN/M2 IN ACCORDANCE WITH IRISH WATER SPECIFICATIONS.
 - ALL PUBLIC FOUL SEWERS TO BE MINIMUM 225MM DIAMETER THERMOPLASTIC STRUCTURED WALL PIPES TO IS EN 13746 (2007/2009), TYPE S8 AND WIS 4-35-01 (2008) AND COMPLY WITH THE REQUIREMENTS OF THE IRISH WATER CODE OF PRACTICE.
 - ALL PUBLIC SURFACE WATER SEWERS TO BE MINIMUM 225 DIA. CLASS H CONCRETE TO EN1916 & IS 6 2004 IN ACCORDANCE WITH THE GREATER DUBLIN REGIONAL CODE OF PRACTICE FOR DRAINAGE WORKS.
 - ALL SURFACE WATER CONNECTIONS TO BE MINIMUM 150mmØ UPVC TO IS EN 1401 2009/2012 IN ACCORDANCE WITH THE GREATER DUBLIN REGIONAL CODE OF PRACTICE FOR DRAINAGE WORKS.
 - LOCATION AND INVERT LEVELS OF EXISTING MANHOLES OR OUTFALL POINTS, WHERE APPLICABLE TO BE VERIFIED BY CONTRACTOR PRIOR TO COMMENCEMENT OF DRAINAGE WORKS.
 - ALL FOUL CONNECTIONS TO COMPLY WITH THE REQUIREMENTS OF THE IRISH WATER.
 - ALL FOUL SEWERS TO BE AIR TESTED IN ACCORDANCE WITH IRISH WATER SPECIFICATIONS.
 - ALL COVER LEVELS TO MATCH FINISHED ROAD/VERGE/FOOTPATH/CYCLETRACK LEVELS UNLESS OTHERWISE STATED.
 - CONTRACTOR TO INCLUDE FOR CCTV SURVEY OF ALL SEWERS UPON COMPLETION OF SAME.

SCALES:
Horizontal 1:200
Vertical 1:67

DATUM 107.000

CENTRE LINE (CL)

GROUND LEVELS ON CL

DISTANCE (m)