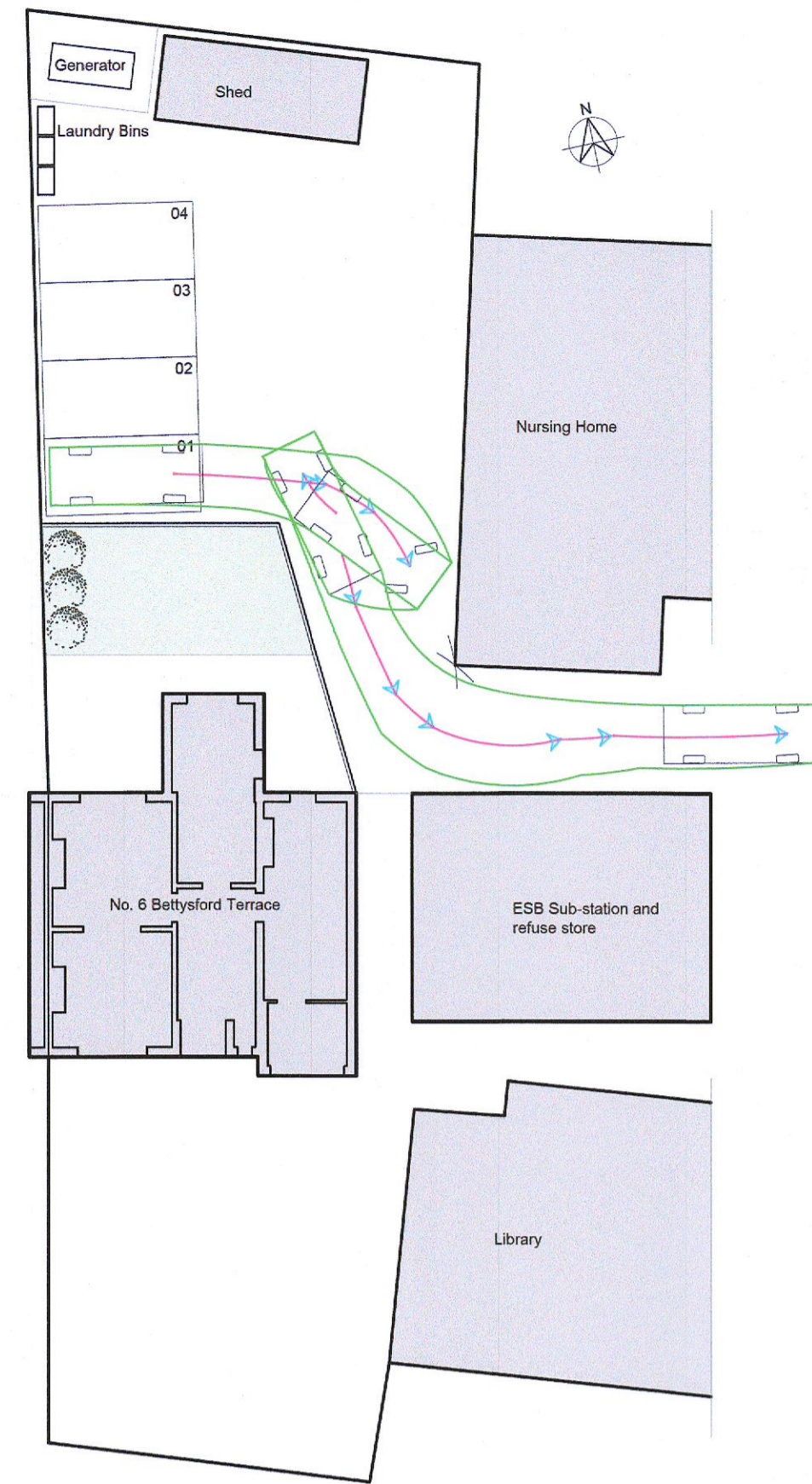
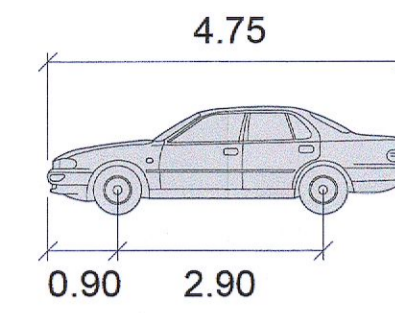


Access to parking space 01
1:200

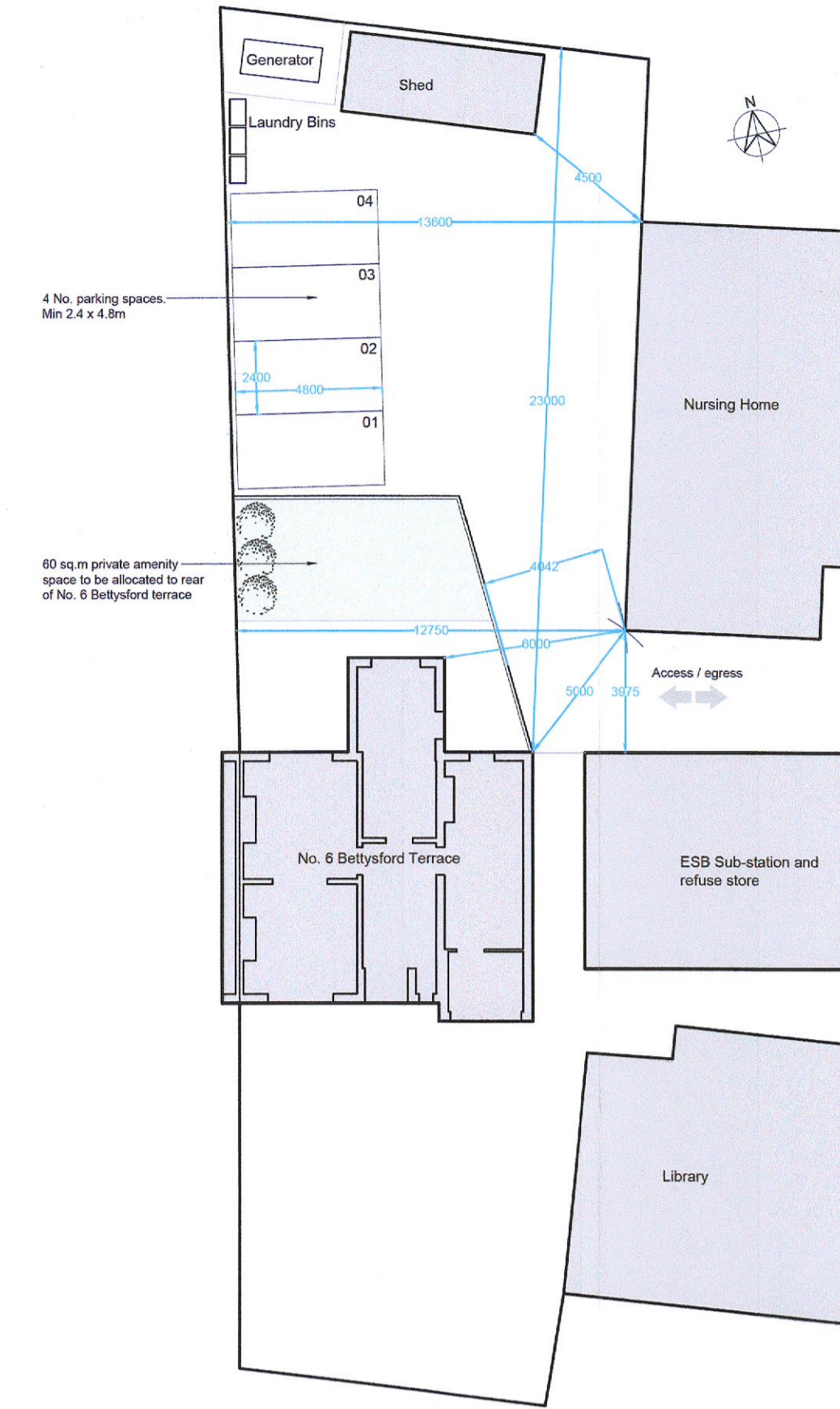


Egress from parking space 01
1:200

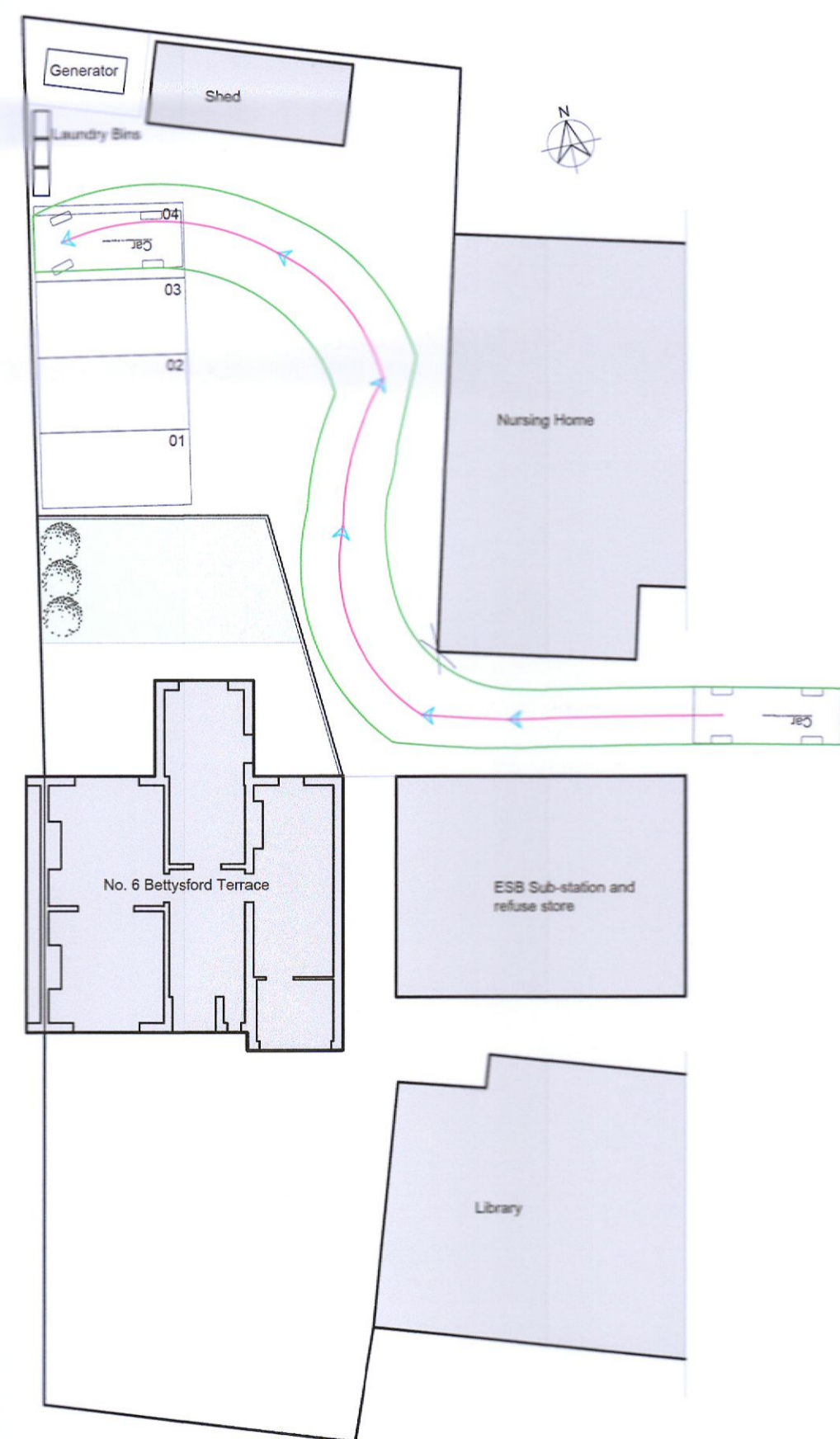


deg

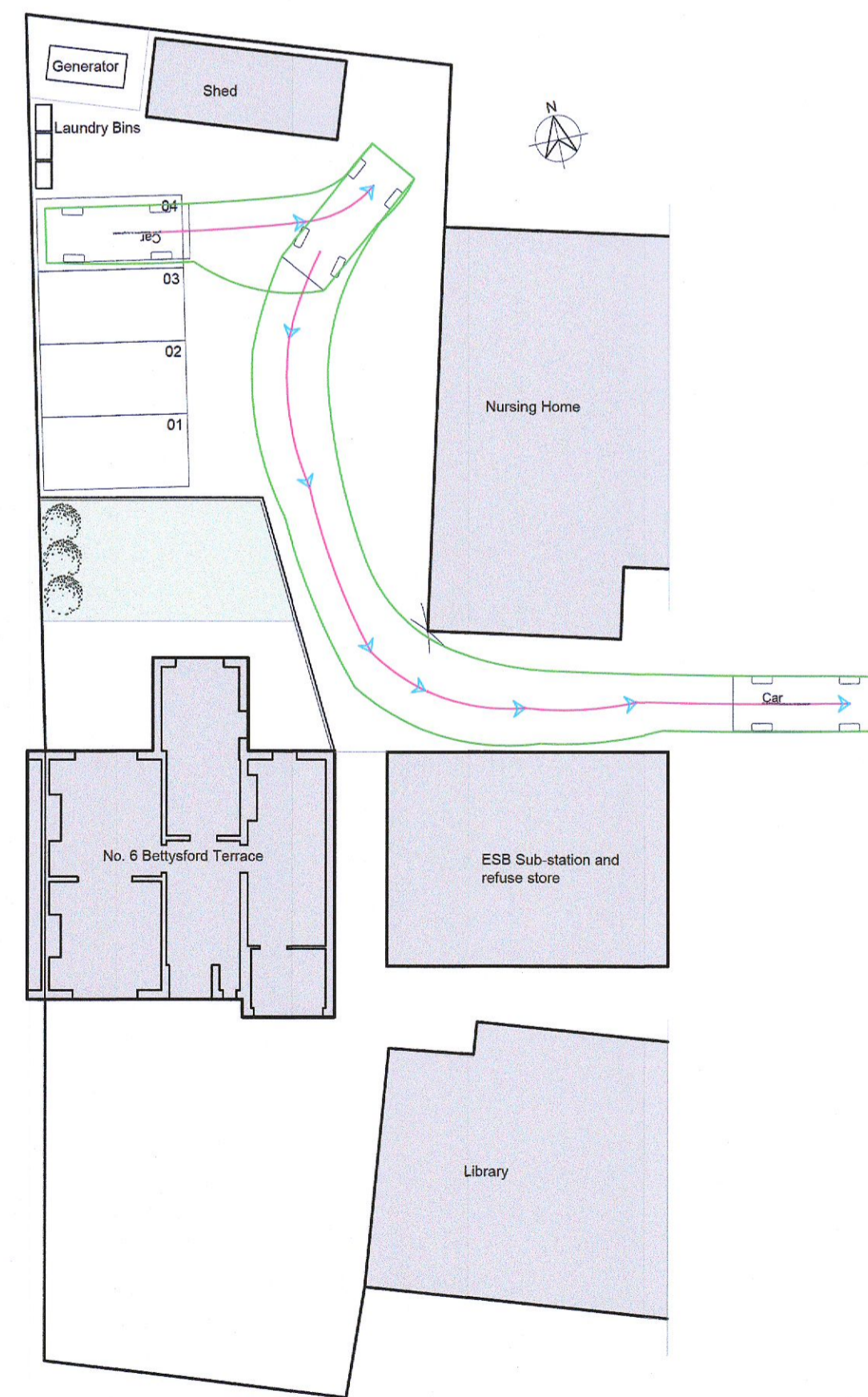
Width : 1.80
Track : 1.80
Lock to Lock Time : 6.0 s
Steering Angle : 30.5 deg



Proposed site layout with critical dimensions
1:200



Access to parking space 04
1:200



Egress from parking space 04
1:200

Additional Information

- Item 3(b) Proposed carpark spaces numbered and dimensioned
- Item 3(c) Critical dimensions at access and egress point
- Item 3(d) Swept path analysis for access and egress to site
- Item 3(e) Distance between nursing home and sub-station and other critical dimensions

Revision	Description	Date	By

Project	No. 6 Bettysford Terrace	 CQA Design & Build Unit B4, Swords Enterprise Centre, Feltrim Road, Swords, Co. Dublin T 01 8903080 E info@cqa.ie W www.cqa.ie
Job No.	16.15	
Drawing Title	Swept Path Analysis	
Drawing No.	P403	
Date	September 2022	
Scale	As shown @ A1	