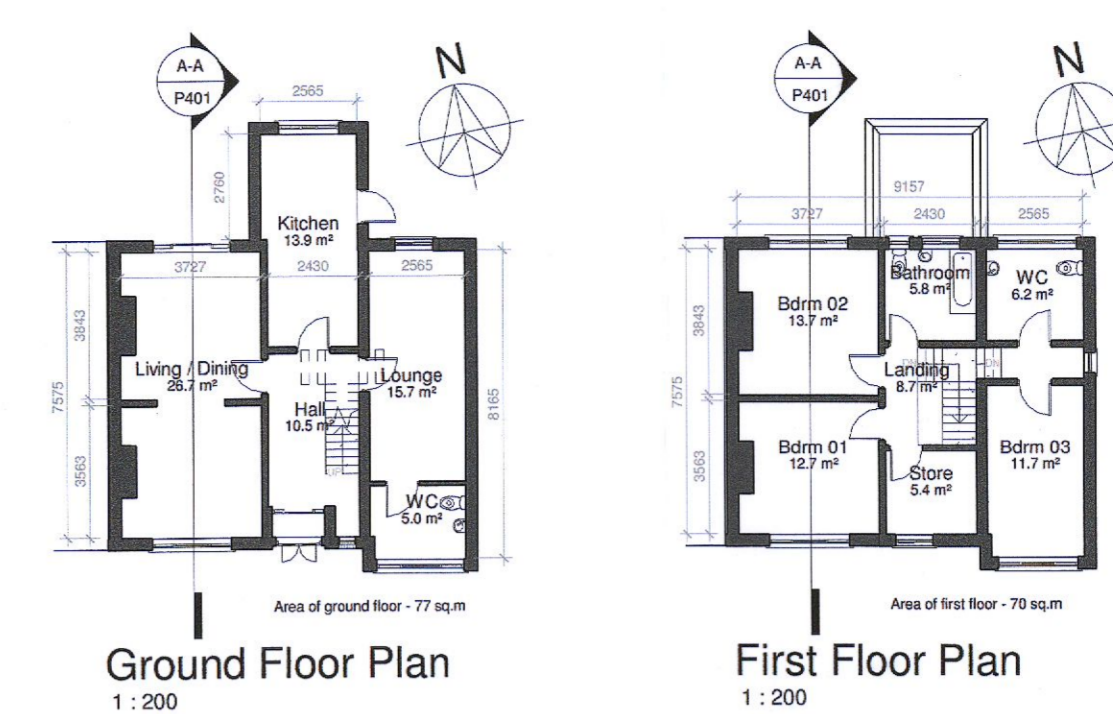




Site Layout - As Proposed
1:250

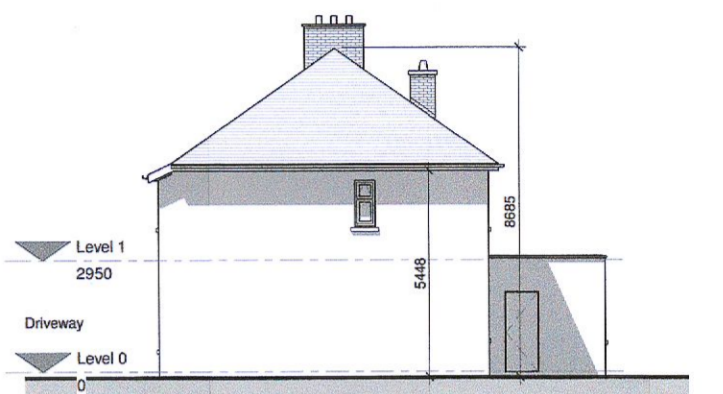
Additional Information
Item 1(a): Proposed site layout showing the intended allocation of a 60sqm residential amenity space and consequent reduction in the extent of carparking



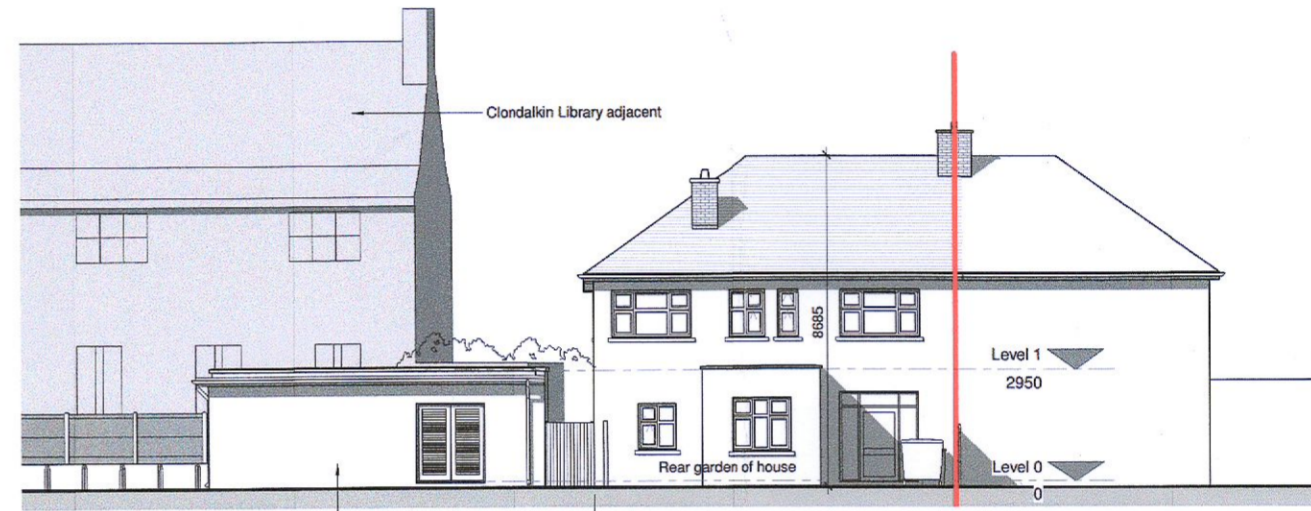
No. 6 Bettysford Terrace - Plans, Elevations & Section
Proposed retention of change of use from Residential to use as ancillary residential staff accommodation for the main nursing home.
No material alterations are proposed.



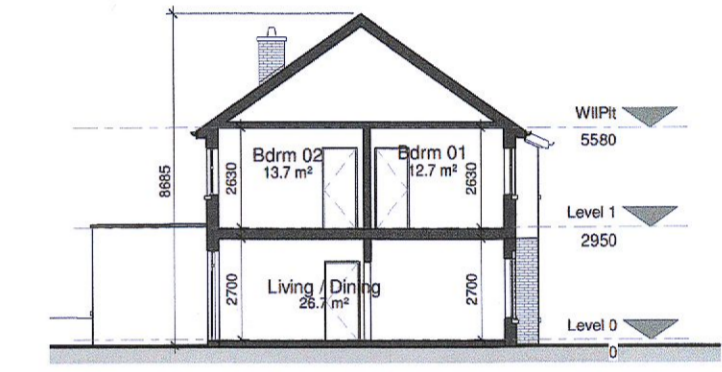
Front (Monastery Road) Elevation
1:200



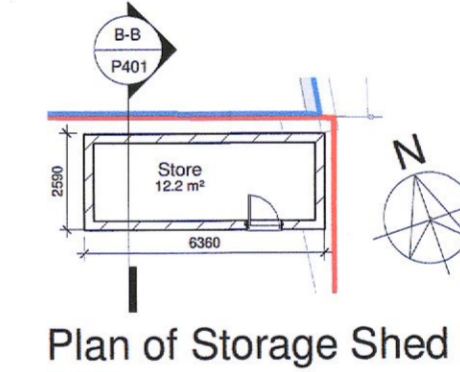
Side (Eastern) Elevation
1:200



Rear (Northern) Elevation
1:200

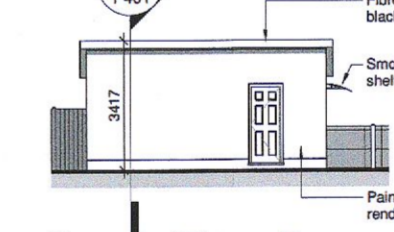


Section A-A
1:200

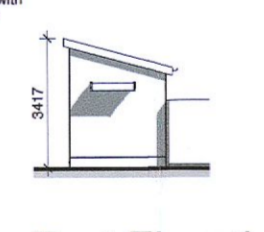


Plan of Storage Shed
1:200

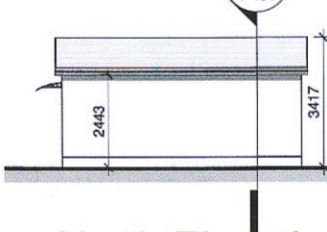
Existing storage shed on site - Plans, Elevations & Section
Proposed to be retained



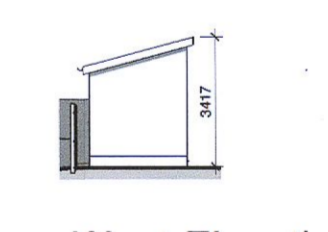
South Elevation
1:200



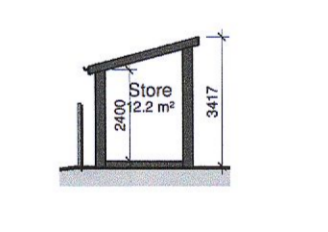
East Elevation
1:200



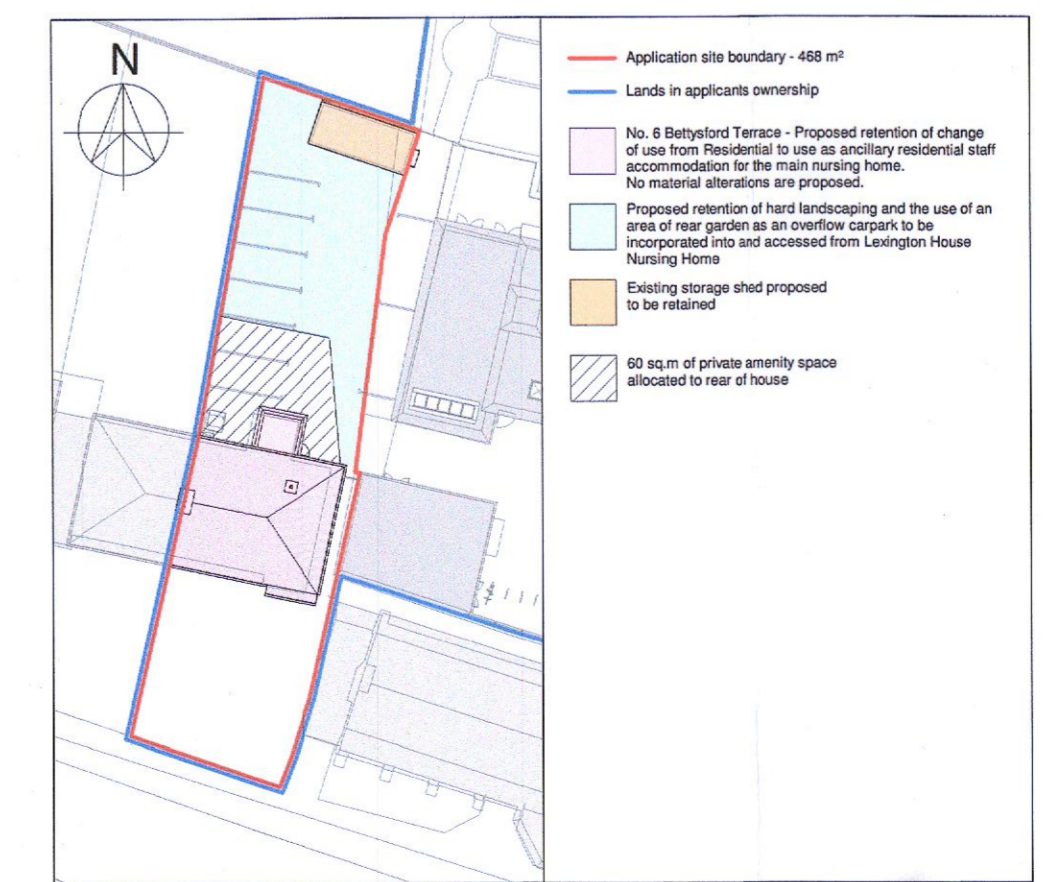
North Elevation
1:200



West Elevation
1:200



Section B-B
1:200



Key Plan
1:500

Additional Information
Item 1(a) Clarification of existing & proposed conditions
Item 1(b) Clarification of amenity space provision

Revision	Description	Date	By
Revision Schedule			

Project: No. 6 Bettysford Terrace
Job Number: 16.15
Drawing Title: Retention - Plans, Elev's & Sect's
Drawing No.: P401
Date: September 2022
Scale: As shown @ A1

DESIGN & BUILD
CQA Design & Build
 Unit 64, Swords Enterprise Park,
 Fairway Road, Swords,
 Co. Dublin
 T 01 8903080
 E info@cqa.ie
 W www.cqa.ie