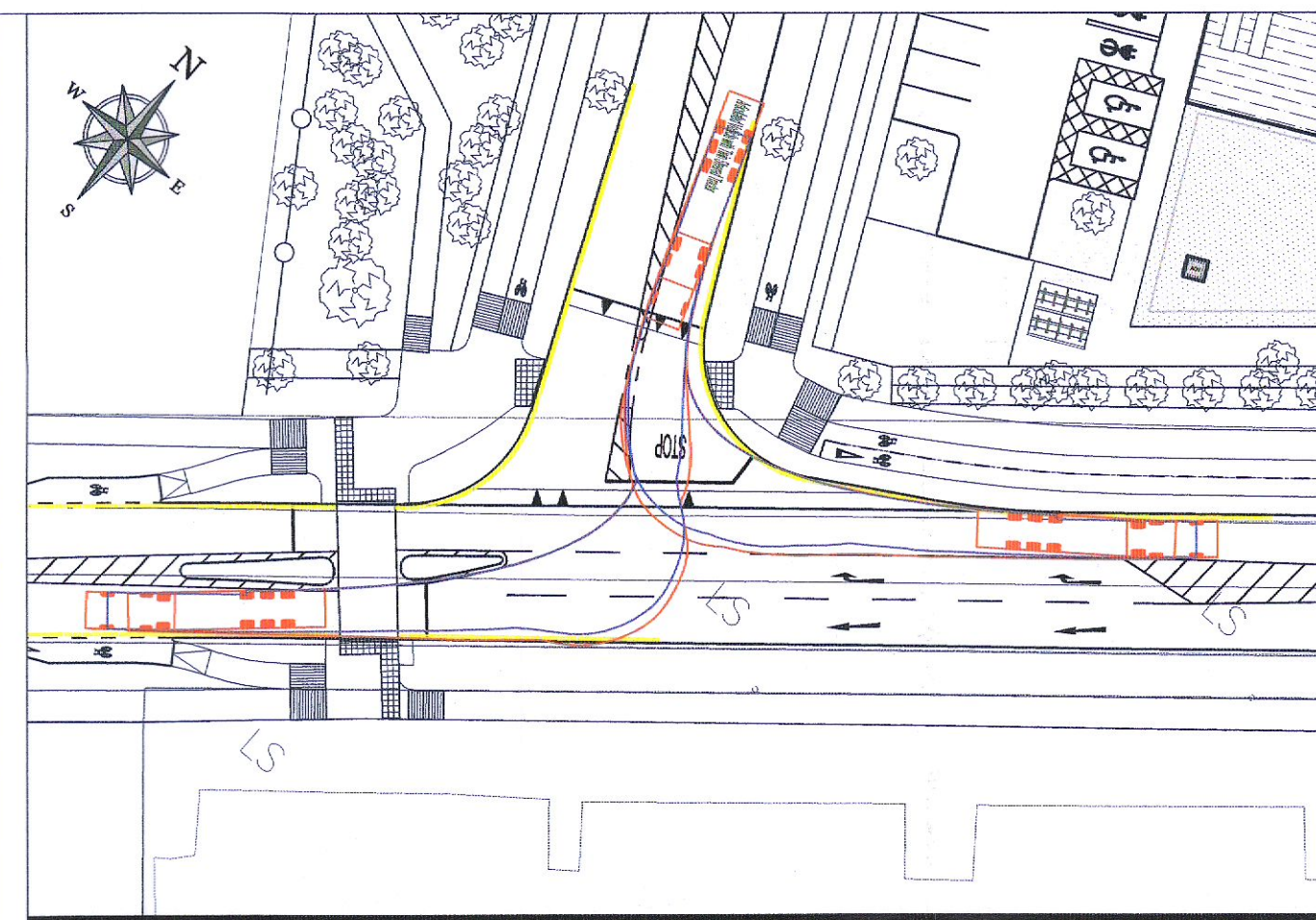
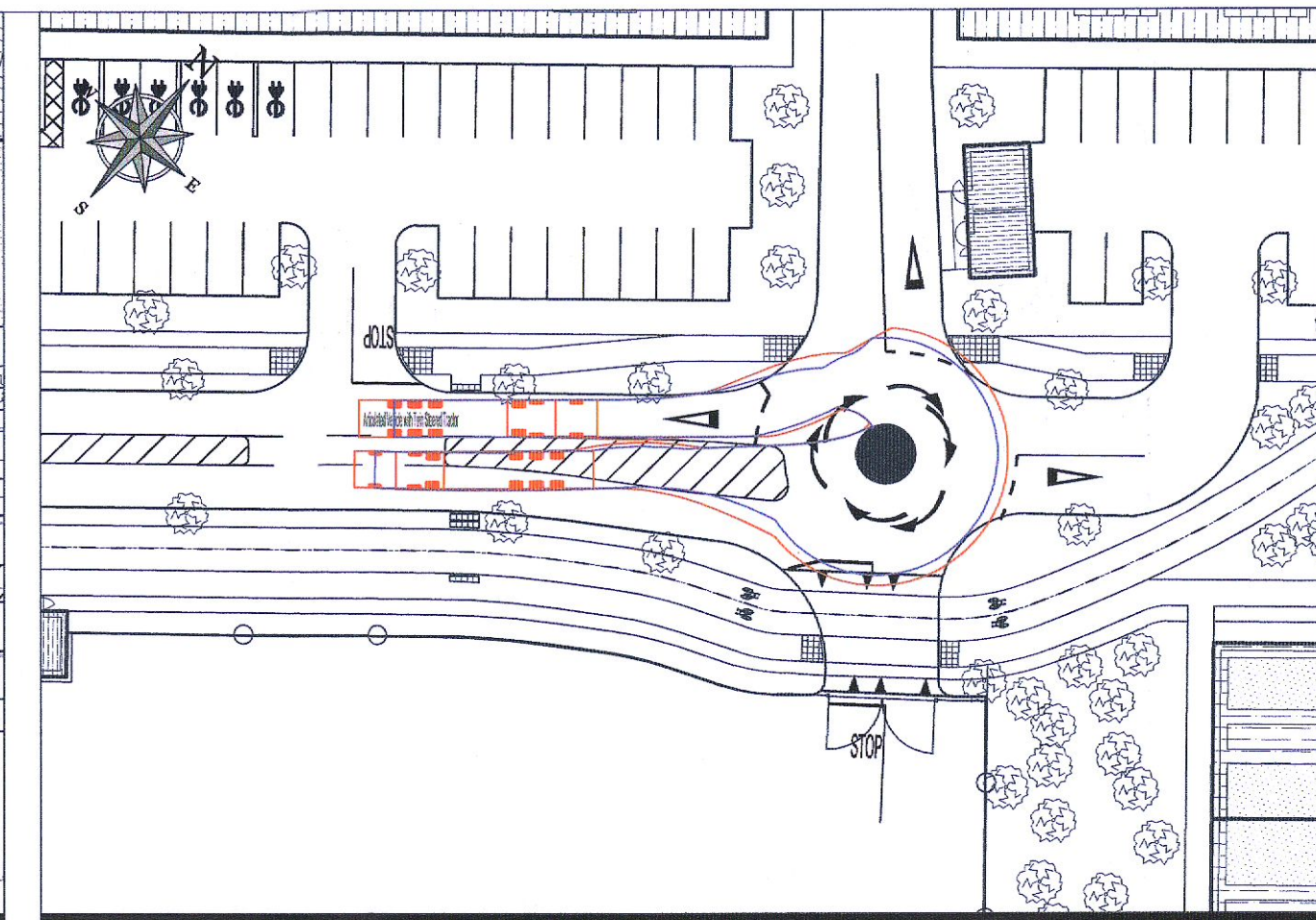


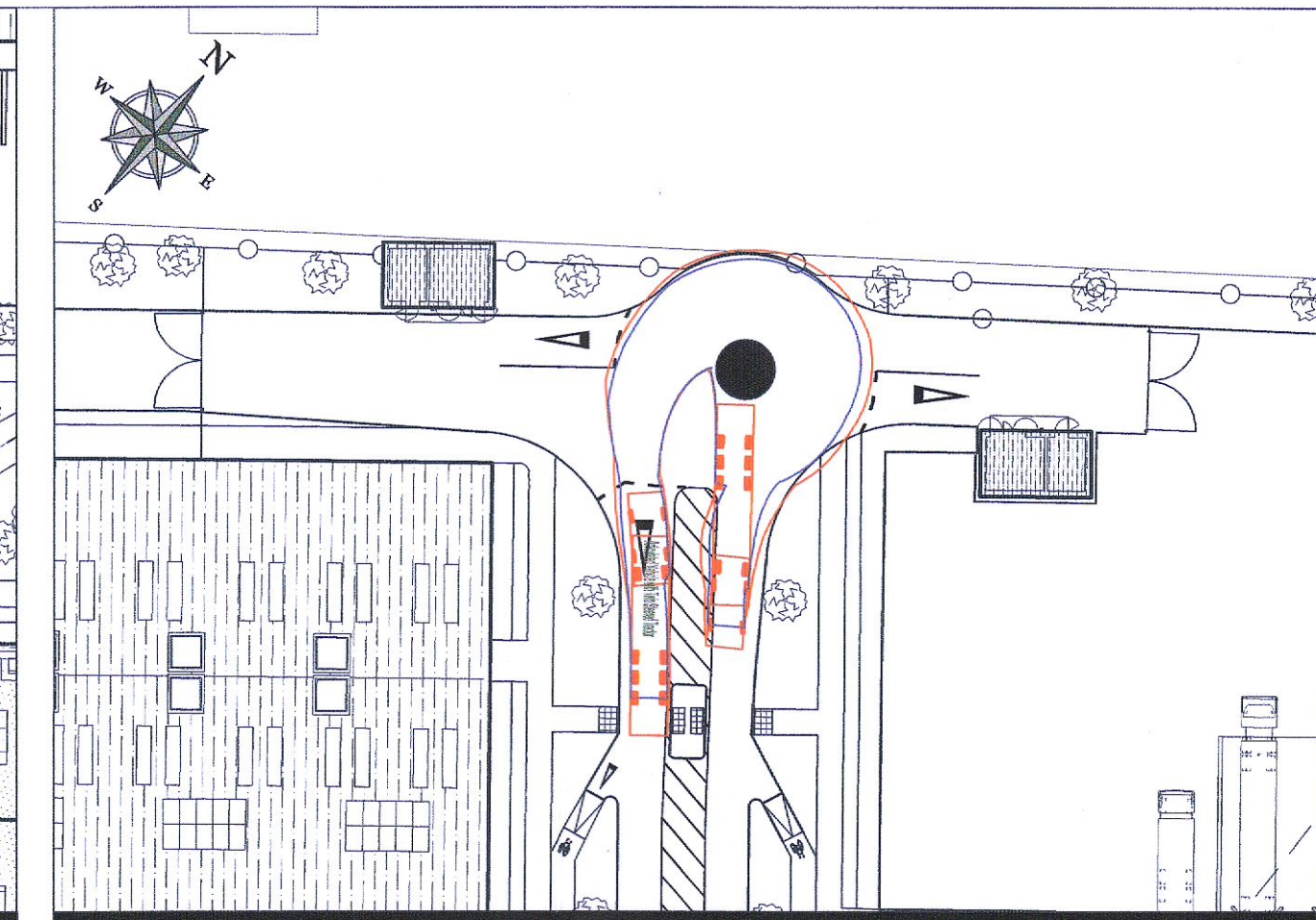
V1 - CALMOUNT RD SITE ACCESS - PRIORITY CONTROLLED OPTION  
16.5m ARTICULATED VEHICLE INBOUND MOVEMENT SCALE = 1:250



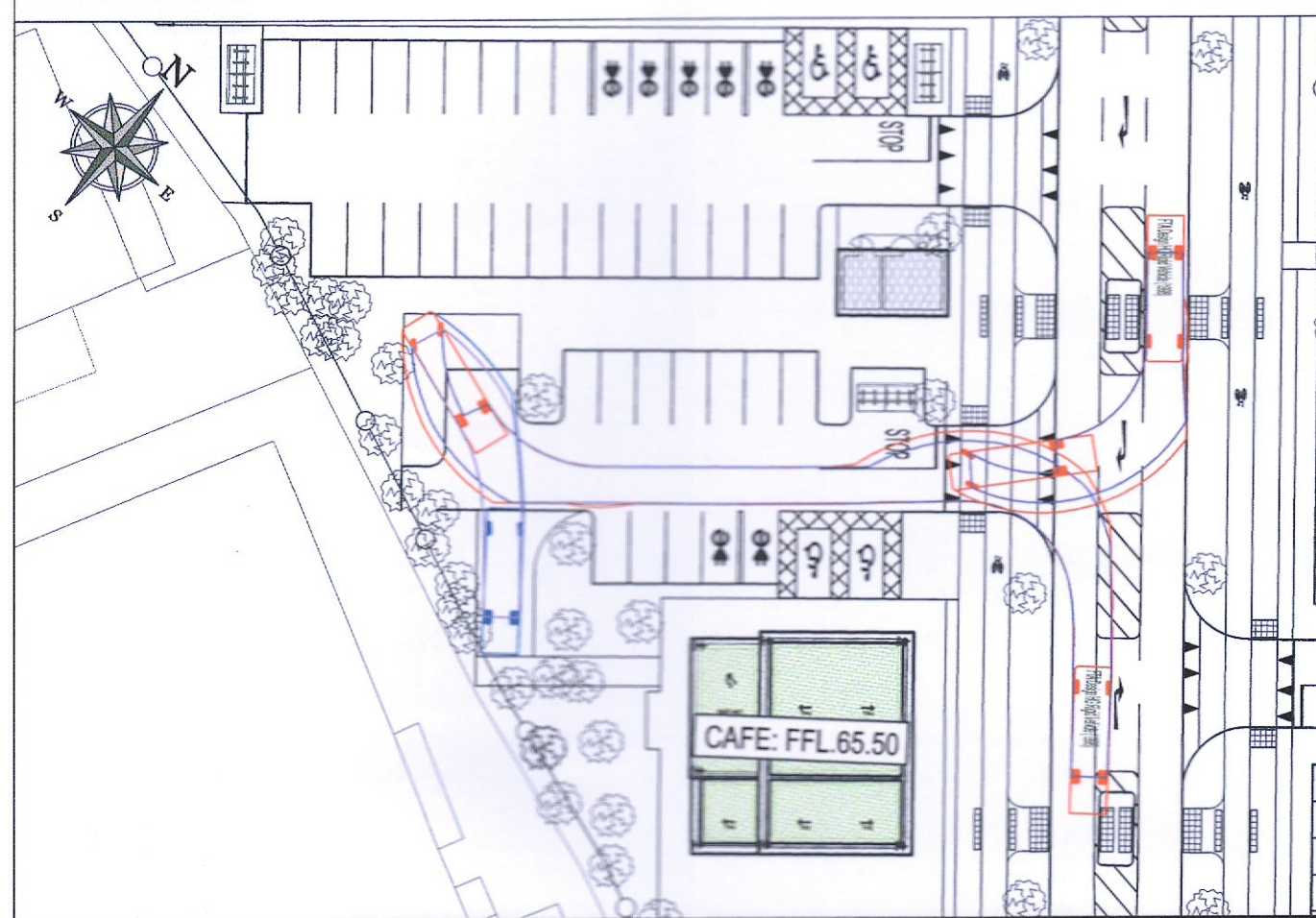
V2 - CALMOUNT RD SITE ACCESS - PRIORITY CONTROLLED OPTION  
16.5m ARTICULATED VEHICLE OUTBOUND MOVEMENT SCALE = 1:250



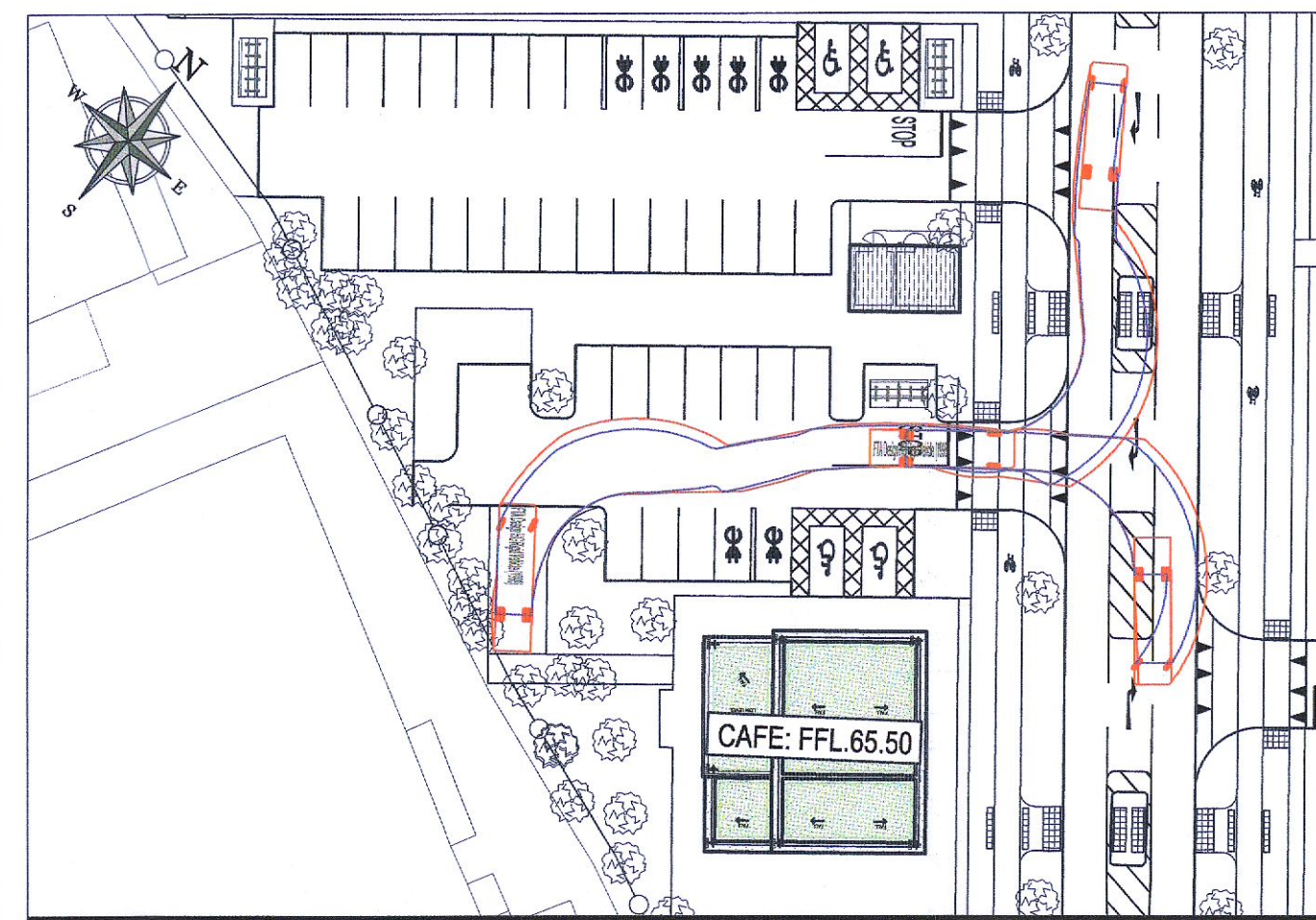
V7 - 16.5m ARTICULATED VEHICLE TURNING MOVEMENT  
SCALE = 1:250



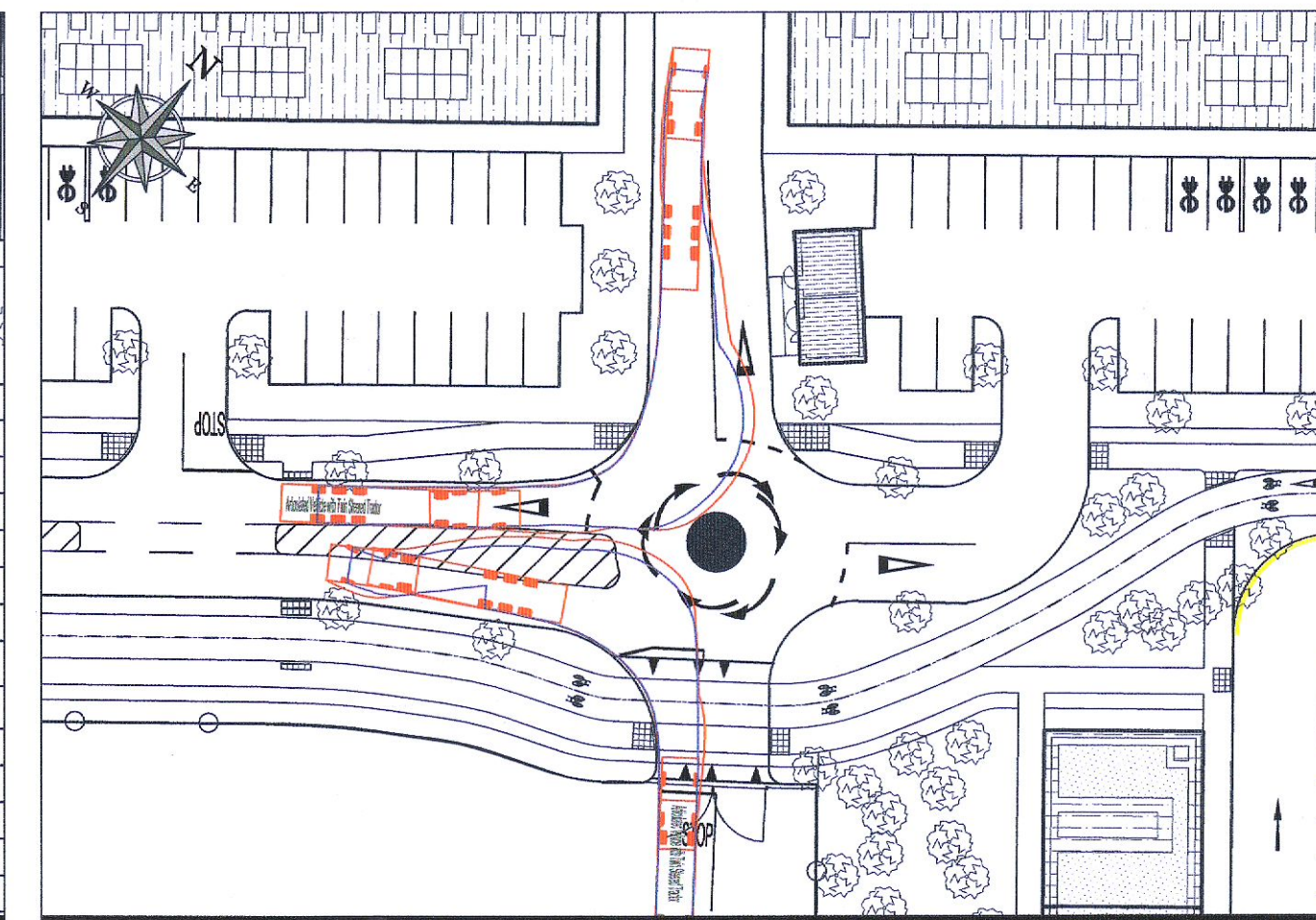
V6 - 16.5m ARTICULATED VEHICLE TURNING MOVEMENT  
SCALE = 1:250



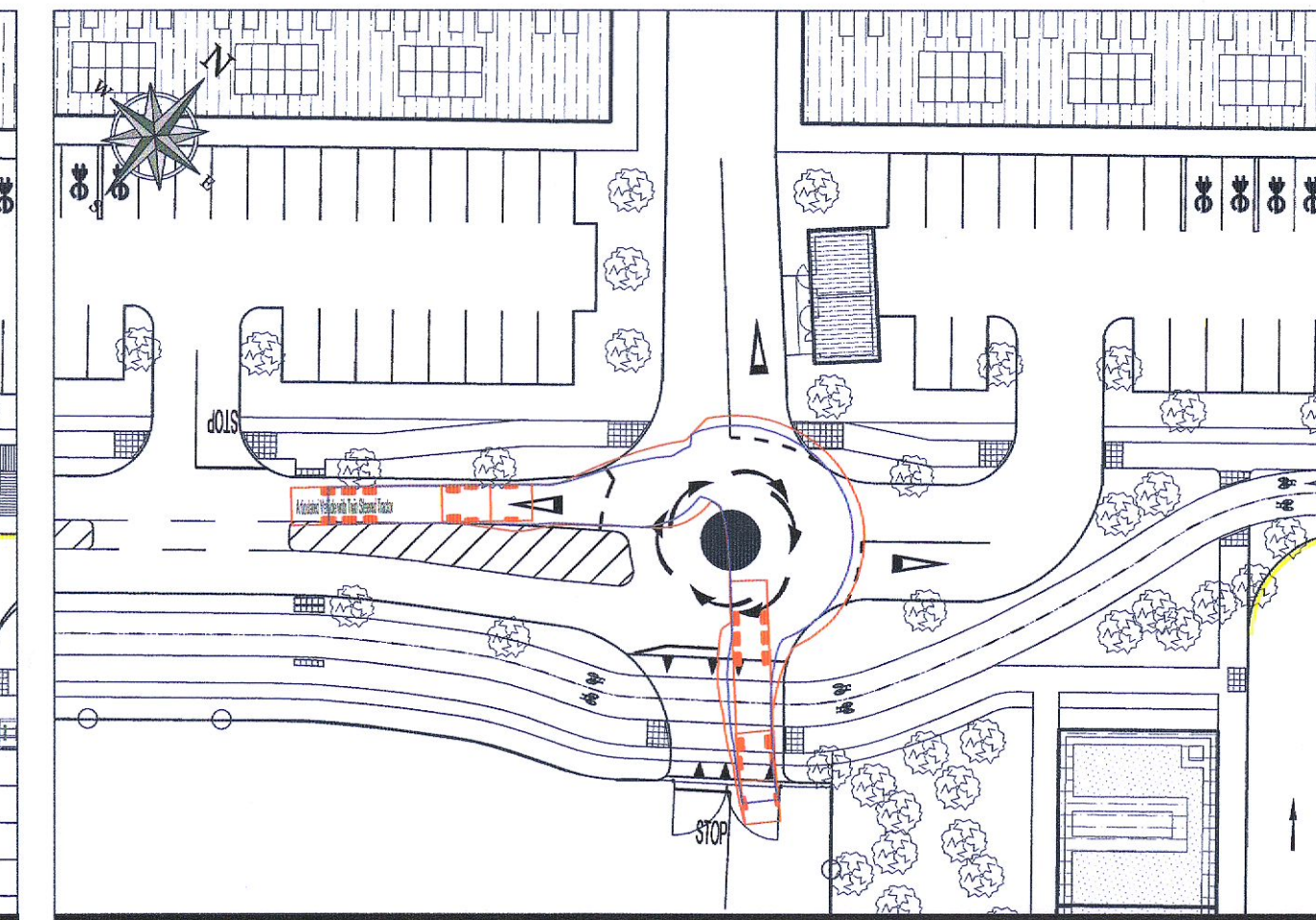
V3 - DELIVERY ACCESS CAFE AREA ACCESS  
10.0m RIGID VEHICLE 1=500



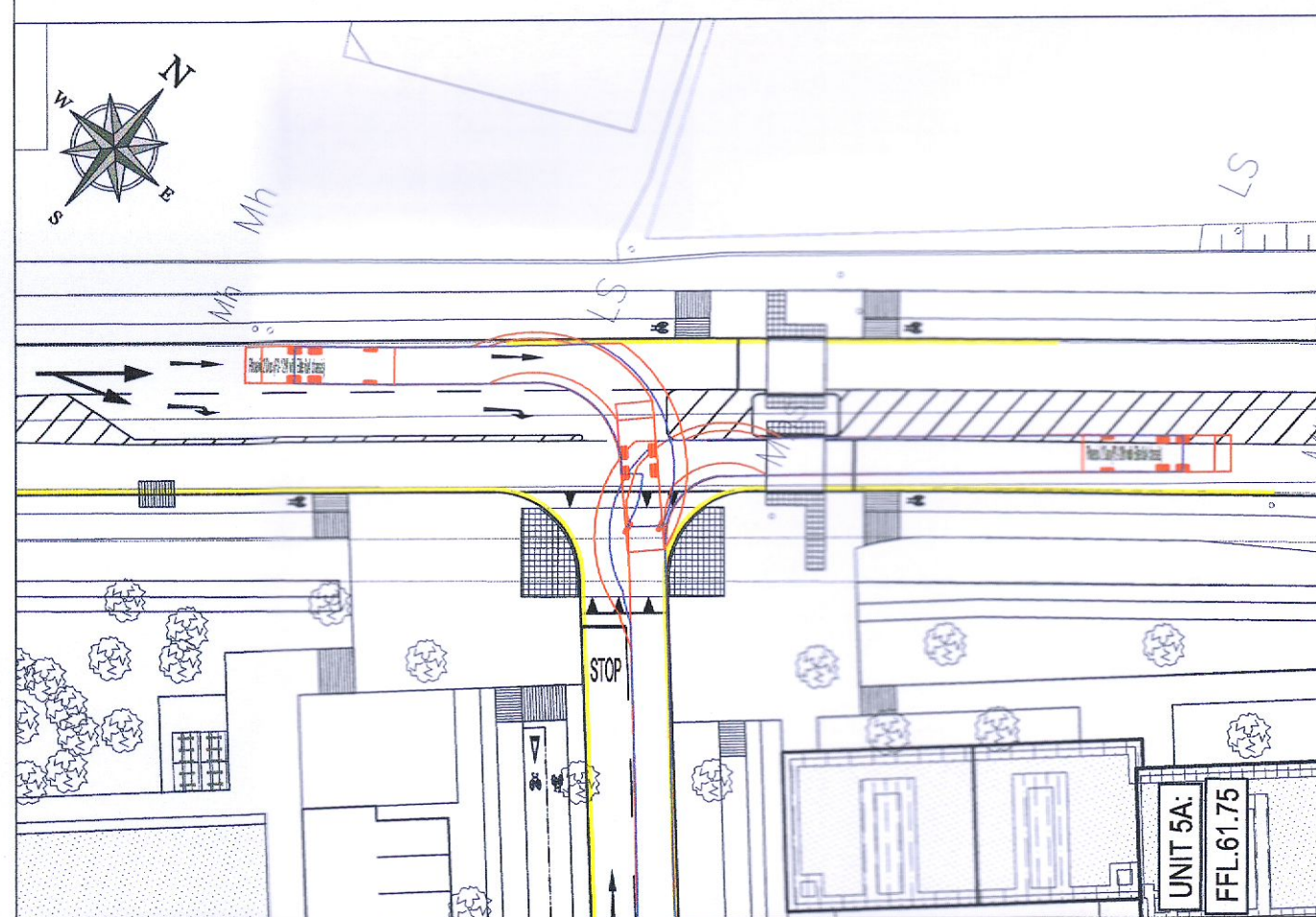
V4 - DELIVERY ACCESS CAFE AREA EGRESS  
10.0m RIGID VEHICLE 1=500



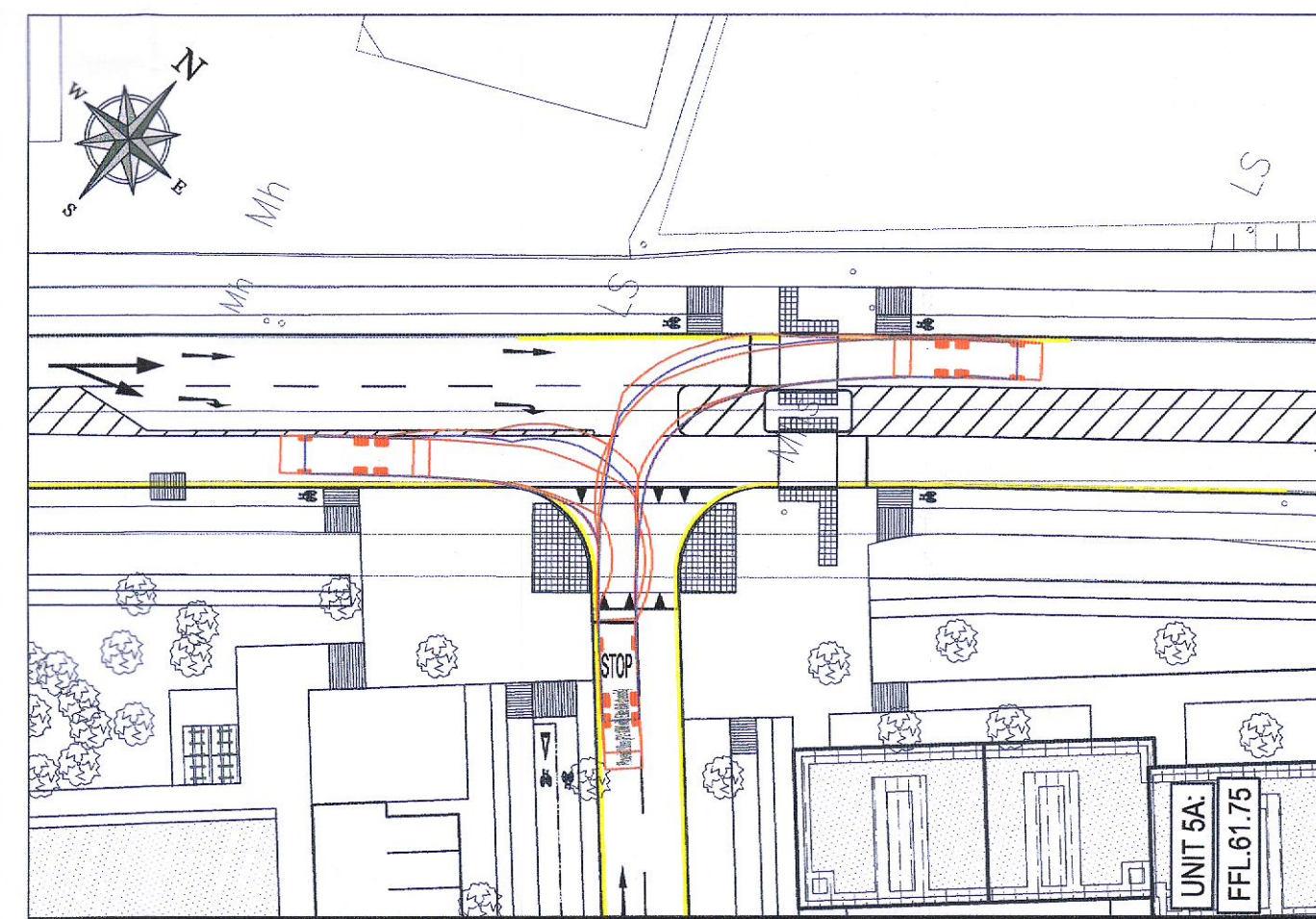
V7 - UNIT 4 ACCESS INBOUND MOVEMENT - UNIT 6 OUTBOUND MOVEMENT  
16.5m ARTICULATED VEHICLE SCALE = 1:250



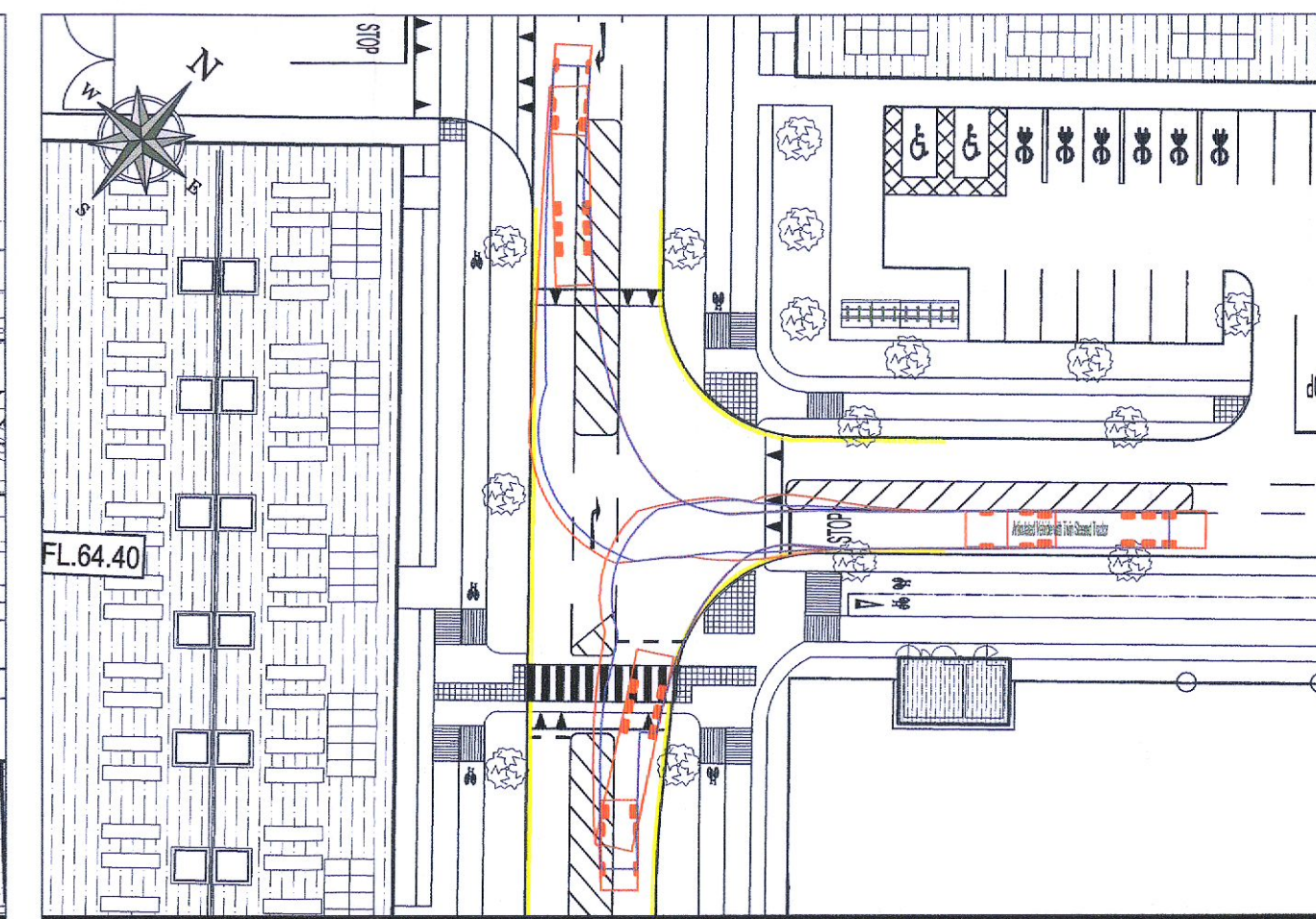
V8 - UNIT 6 ACCESS INBOUND MOVEMENT  
16.5m ARTICULATED VEHICLE SCALE = 1:250



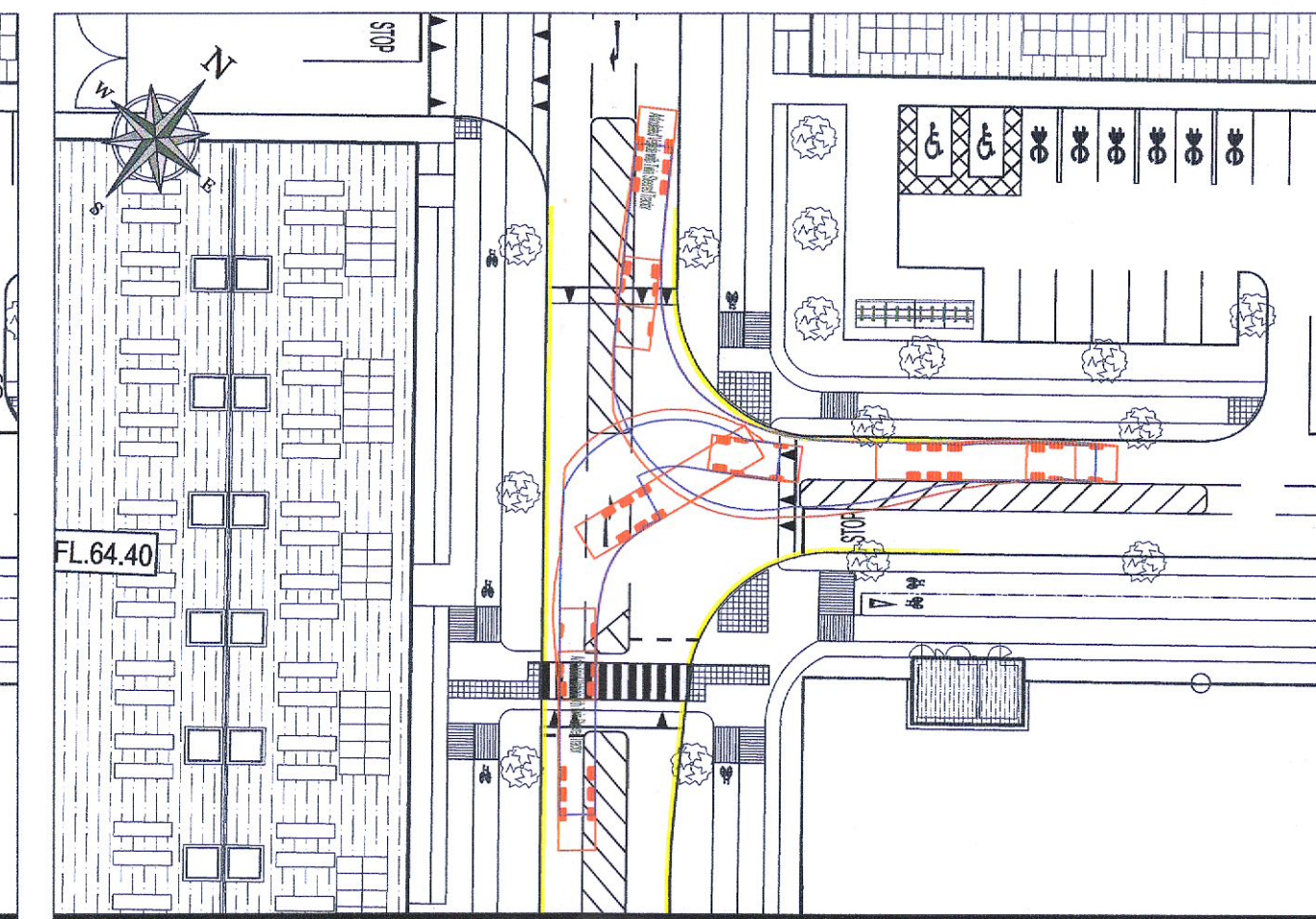
V5 - BALLYMOUNT AVENUE SITE ACCESS  
10.2m REFUSE VEHICLE INBOUND MOVEMENT SCALE = 1:500



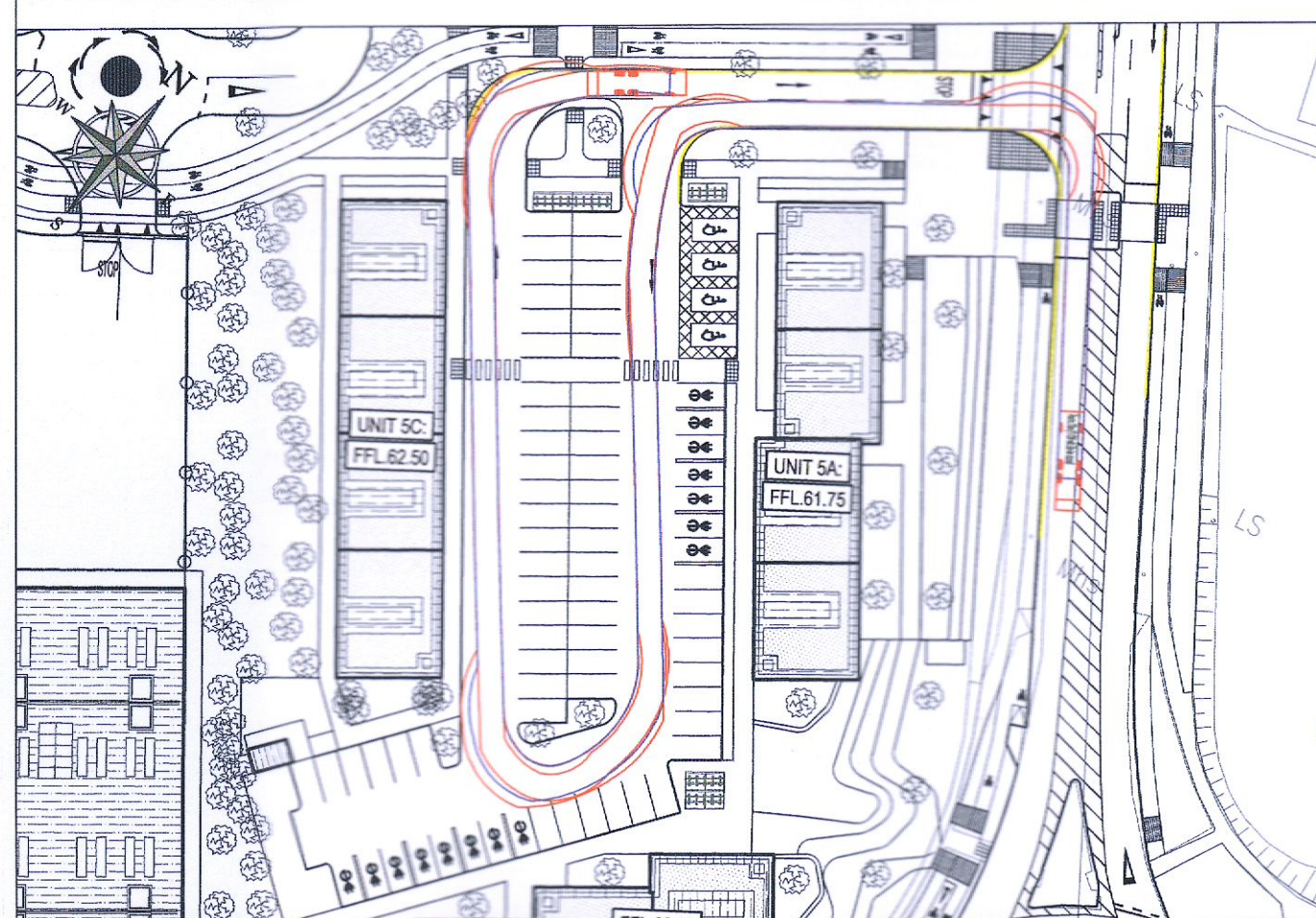
V6 - BALLYMOUNT AVENUE SITE EGRESS  
10.2m REFUSE VEHICLE OUTBOUND MOVEMENT SCALE = 1:500



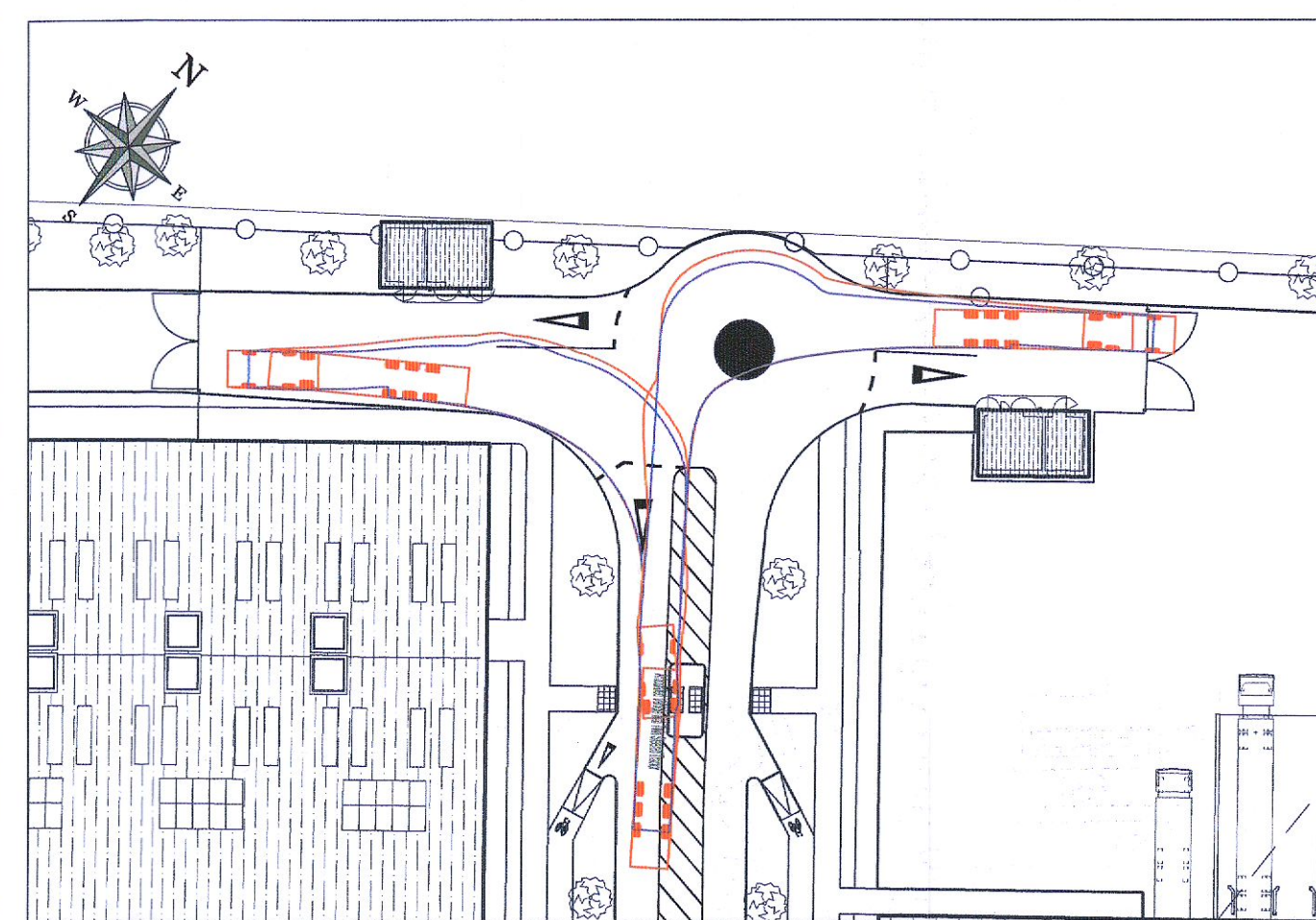
V9 - ACCESS TO EAST PORTION OF DEVELOPMENT  
16.5m ARTICULATED VEHICLE OUTBOUND MOVEMENT SCALE = 1:500



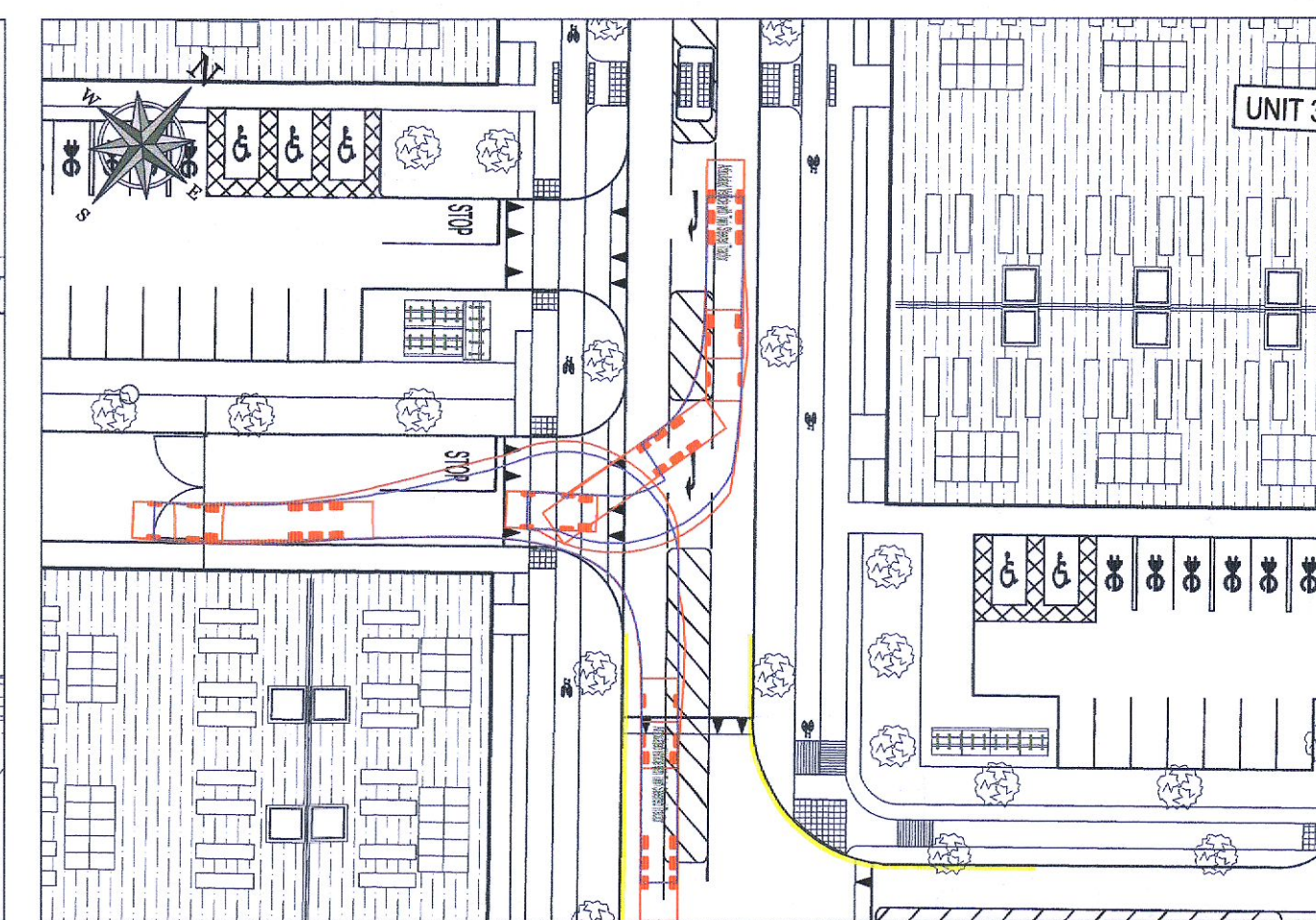
V10 - EGRESS FROM EASTERN PORTION OF DEVELOPMENT  
16.5m ARTICULATED VEHICLE INBOUND MOVEMENT SCALE = 1:500



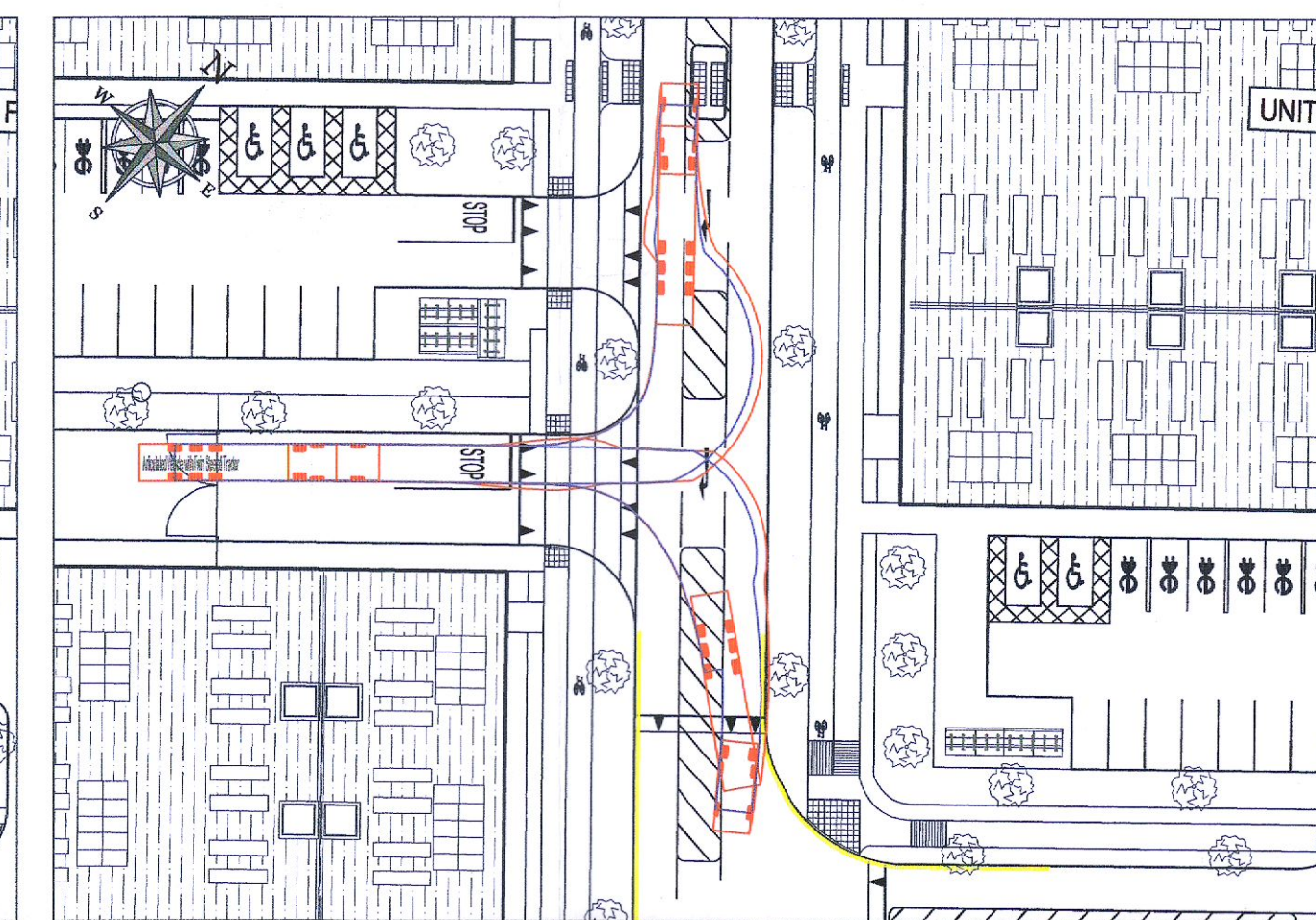
V7 - OFFICE FACILITY ACCESS / EGRESS  
10.2m REFUSE VEHICLE INBOUND MOVEMENT SCALE = 1:750



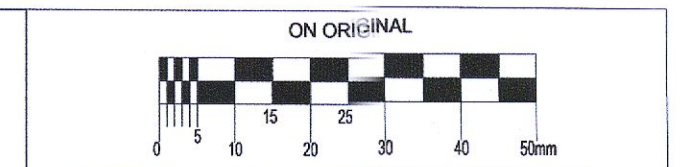
V8 - UNIT 2 / 3 ACCESS  
16.5 ARCTICULATED VEHICLE INBOUND MOVEMENT SCALE = 1:500



V11 - UNIT 1 ACCESS  
16.5m ARTICULATED VEHICLE SCALE = 1:500



V12 - UNIT 1 EGRESS  
16.5m ARTICULATED VEHICLE SCALE = 1:500

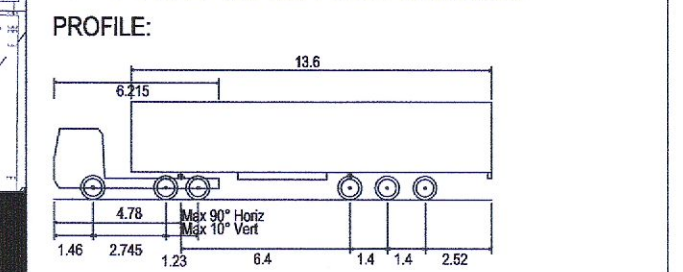


© COPYRIGHT OF THIS DRAWING IS RESERVED BY DBFL CONSULTING ENGINEERS. NO PART SHALL BE REPRODUCED OR TRANSMITTED WITHOUT THEIR WRITTEN PERMISSION.

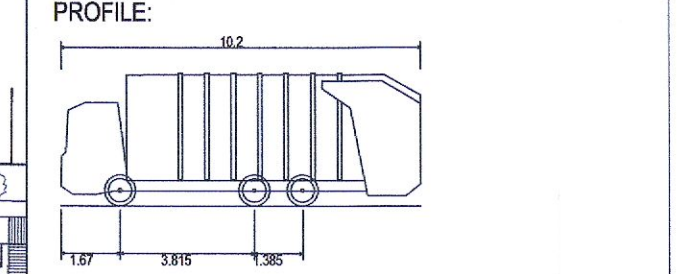
NO CHANGES OF WHATSOEVER NATURE ARE TO BE MADE TO ANY DETAILS SET OUT OR CONTAINED IN ANY DBFL SPECIFICATIONS OR DRAWINGS UNLESS THE EXPRESS CONSENT HAS BEEN OBTAINED IN ADVANCE, IN WRITING, FROM DBFL.

NOTES:

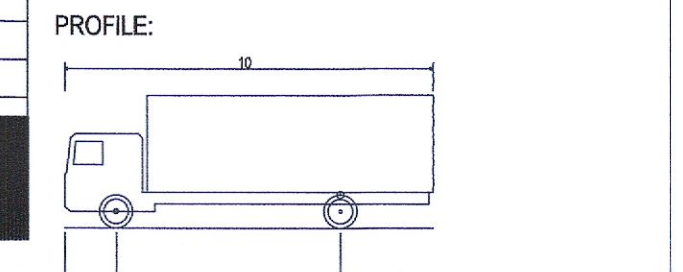
- GENERAL NOTES:
- ALL CO-ORDINATES ARE TO IRISH TRANSVERSE MERCATOR (BASED ON OS MAPPING)
  - ALL LEVELS ARE TO ORDANCE DATUM MALIN HEAD (BASED ON LIDAR SURVEY INFORMATION)
  - ALL DIMENSIONS IN METERS UNLESS SPECIFIED OTHERWISE
  - DO NOT SCALE FROM DRAWING



ARTICULATED VEHICLE WITH TWIN STEERED TRACTOR  
OVERALL LENGTH 16.500M  
OVERALL WIDTH 2.550M  
OVERALL BODY HEIGHT 3.691M  
MIN BODY GROUND CLEARANCE 0.426M  
MAX TRACK WIDTH 2.500M LOCK-TO-LOCK TIME 6.00S  
CURB TO CURB TURNING RADIUS 6.987M



PHOENIX 2 DUO (P2-12W WITH ELITE 6X4 CHASSIS)  
OVERALL LENGTH 10.200M  
OVERALL WIDTH 2.530M  
OVERALL BODY HEIGHT 3.751M  
MIN BODY GROUND CLEARANCE 0.304M  
TRACK WIDTH 2.500M  
LOCK-TO-LOCK TIME 4.00S  
CURB TO CURB TURNING RADIUS 7.800M



FTA DESIGN HG RIGID VEHICLE (1998)  
OVERALL LENGTH 11.000M  
OVERALL WIDTH 2.500M  
OVERALL BODY HEIGHT 3.645M  
MIN BODY GROUND CLEARANCE 0.440M  
TRACK WIDTH 2.470M  
LOCK-TO-LOCK TIME 3.00S  
CURB TO CURB TURNING RADIUS 11.000M

ORDNANCE SURVEY IRELAND LICENCE  
No EN CYAL50276885©  
ORDNANCE SURVEY IRELAND  
GOVERNMENT OF IRELAND

PROJ	06-09-2022	Third Issue	JP	TJ
REV	06-09-2022	Second Issue	JP	TJ
REV	date	description	by	chkd.
client approval		A - Approved		
		B - Approved with comments		
		C - Do not use		

ISSUE PURPOSE: RFI RESPONSE

**DBFL Consulting Engineers**  
Civil, Structural & Transportation Engineering  
www.dbfl.ie

DUBLIN OFFICE: Ormond House, Upper Ormond Quay, Dublin 7, D07 W004  
PHONE: +353 1 400 4000

CORK OFFICE: 14 South Mall, Cork, T12 CT11  
PHONE: +353 21 2000308

WATERFORD OFFICE: Suite 10 The Arkum, Marlboro Gate, Canada Street, Waterford, X91 W028  
PHONE: +353 51 399 560

project ref: WAREHOUSING / LOGISTICS & OFFICES AT CALMOUNT ROAD, BALLYMOUNT

drawing title: SWEEP PATH ANALYSIS - 16.5M ARTICULATED VEHICLE

client: BLACKWIN LIMITED

designed by	author	scale	sheet size
TJ	JP	AS SHOWN	A1
drawing no.	revision		
210175-DBFL-TR-SP-DR-C-1024	P02		