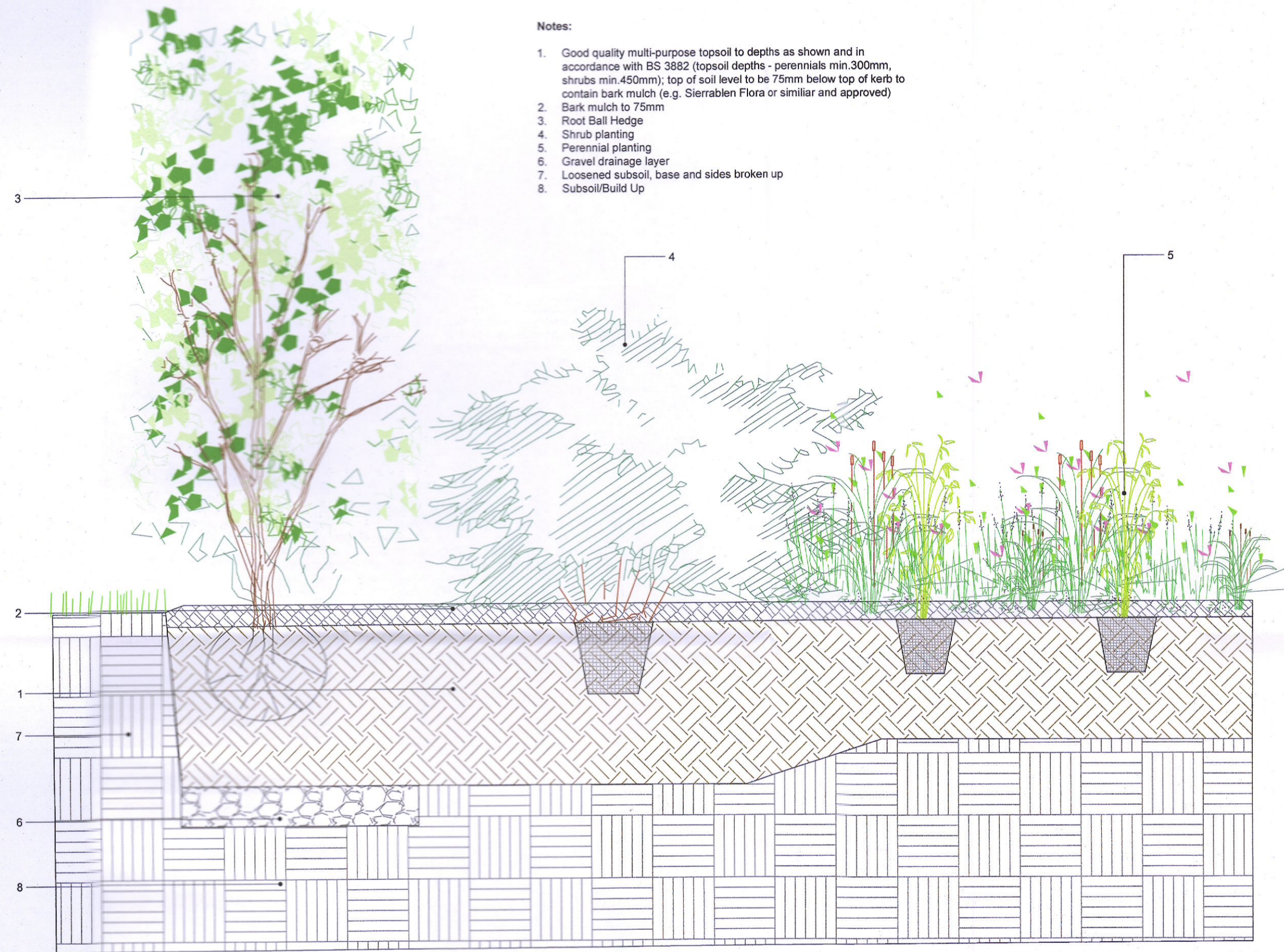


Planting Detail - Hedge, Shrubs and Perennials
Scale 1:10

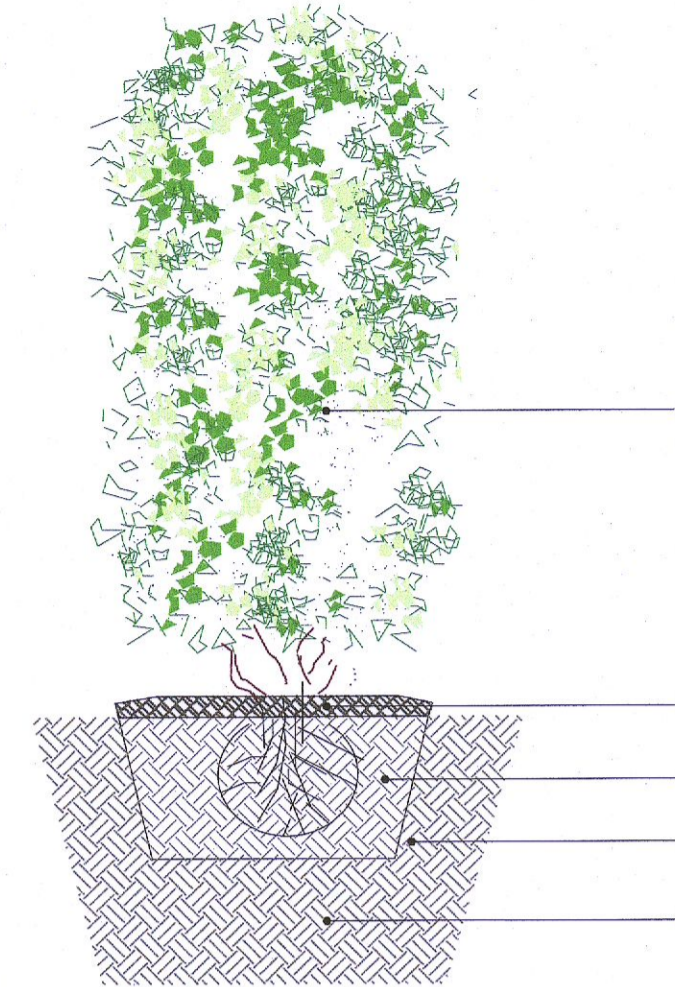
D.01
01



- Notes:
1. Good quality multi-purpose topsoil to depths as shown and in accordance with BS 3882 (topsoil depths - perennials min 300mm, shrubs min 450mm); top of soil level to be 75mm below top of kerb to contain bark mulch (e.g. Sierrablen Flora or similar and approved)
 2. Bark mulch to 75mm
 3. Root Ball Hedge
 4. Shrub planting
 5. Perennial planting
 6. Gravel drainage layer
 7. Loosened subsoil, base and sides broken up
 8. Subsoil/Build Up

Shrub planting
To Building and Street Boundary
Scale 1:20

D.02
01

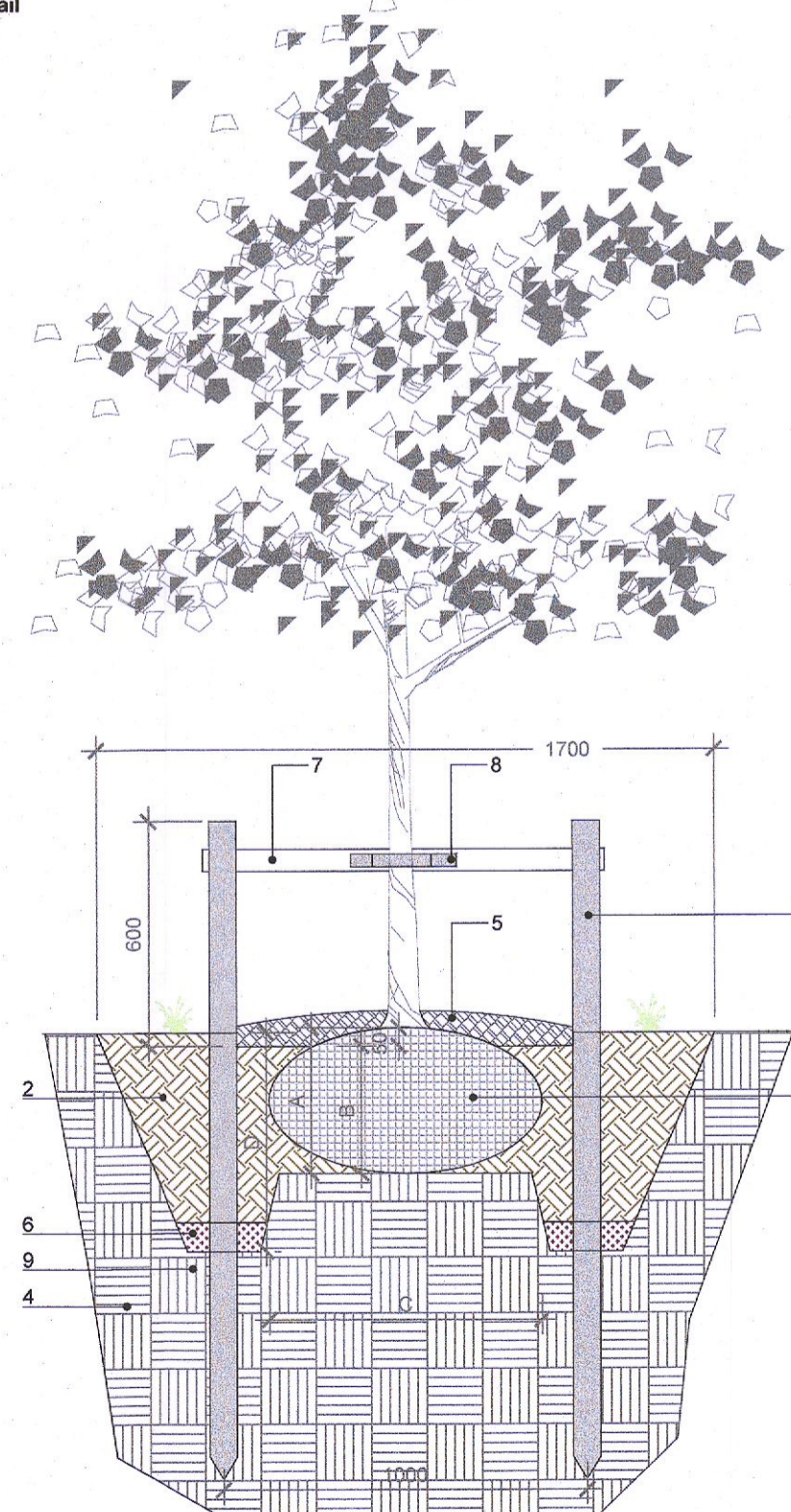


- Notes:
1. Good quality multi-purpose topsoil to depths as shown and in accordance with BS 3882 (depth of topsoil - shrubs min 450mm in green areas and min of 400mm in planters); top of soil level to be 75mm below top of kerb to contain bark mulch (e.g. Sierrablen Flora or similar and approved);
 2. Bark mulch, 75mm depth;
 3. Proposed shrubs;
 4. Loosened subsoil, base and sides broken up;
 5. Subsoil.

Tree Pit Detail - Rootballed Trees
Scale 1:20

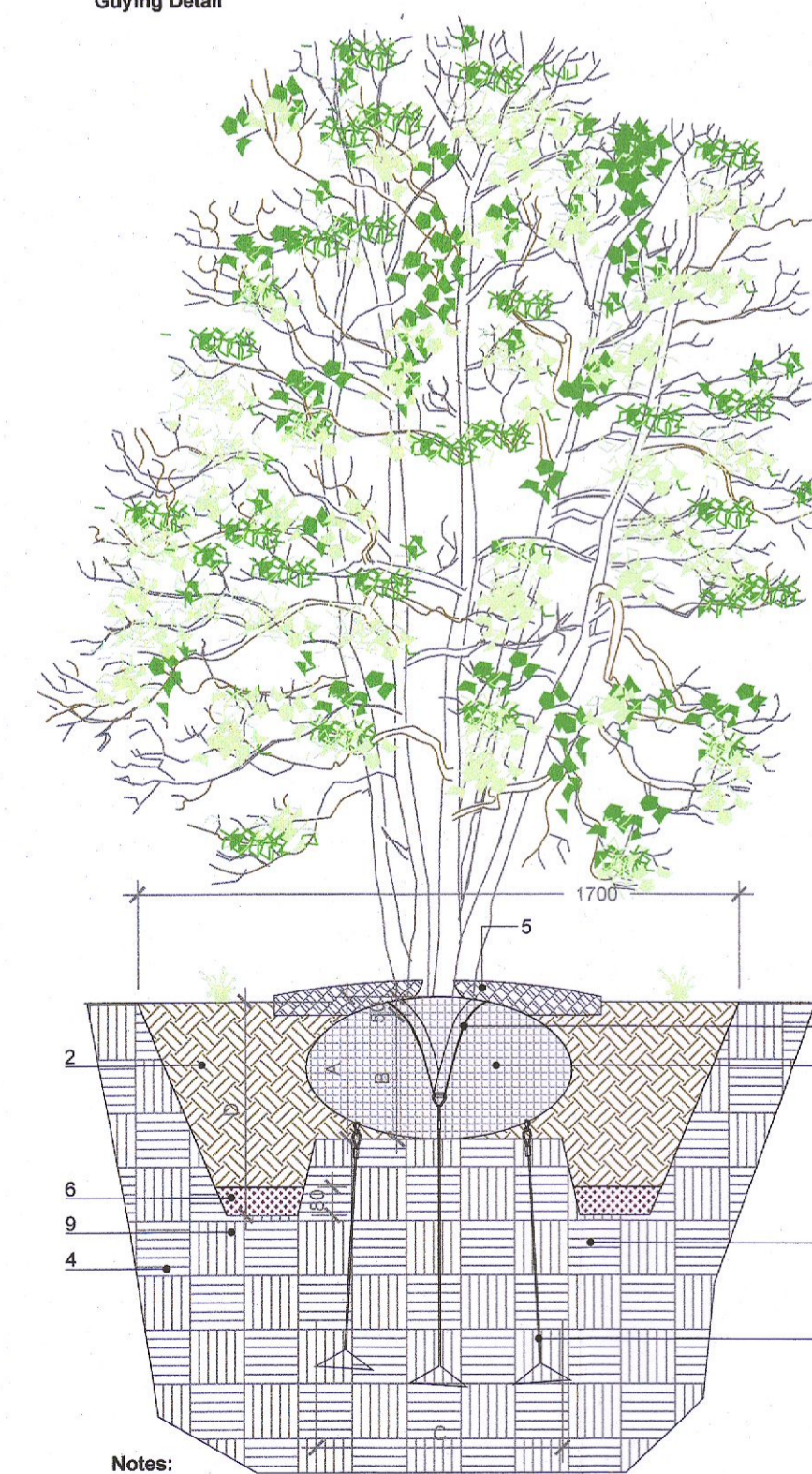
D.03
01

Stake Detail



- Notes:
1. Round stake 1.8m long, 75mm diameter;
 2. Good quality topsoil to BS 3882 and slow release fertiliser (e.g. Sierrablen Flora &/or similar and approved);
 3. Tree rootball;
 4. Free Draining Subsoil (to proposed levels and falls);
 5. Bark mulch, 75mm depth;
 6. 80mm layer of farmyard manure or a suitable compost material as approved;
 7. Crossbar - securely fixed to stakes;
 8. Adjustable tree tie - securely fixed to crossbar.
 9. Loosened subsoil, base and sides broken up.

Guying Detail



- Notes:
1. Rootball guying system and tree ties
 2. Good quality topsoil to BS 3882 and slow release fertiliser;
 3. Tree rootball;
 4. Free Draining Subsoil (to proposed levels and falls);
 5. Bark mulch, 75mm depth;
 6. 80mm layer of farmyard manure or a suitable compost material as approved;
 7. Loosened subsoil, base and sides broken up.

Dimensions:
A - Rootball depth
B - Rootball depth minus 50mm
C - Rootball diameter
D - Rootball depth plus 200mm

Key Plan 1:2000



1. This drawing is intended to show landscape architectural proposals only. Please refer to Architects and Engineers drawings for relevant details of buildings, structures, roads, parking, etc.
2. The copyright of this drawing is vested with Murray & Associates. This drawing may not be copied or reproduced without written consent.
3. All materials referred to on this drawing - including plant species - are indicative and subject to change following detailed site investigation. Significant changes, if any are required, will be referred to the relevant authority for agreement.
4. This drawing is not suitable for use for construction purposes.
5. Discrepancies to be referred to Murray & Associates for clarification.

murray & associates
landscape architecture

18 The Skopout Building
44-45 Confort Road,
Dublin 3, D03 RFE6

mail@murray-associates.com
www.murray-associates.com
+353 (0)1 854 0090

B	06/09/22	RFI	IV	IMB
A	23/08/22	RFI	IV	IMB
D	01/04/22	Planning Issue	HT	IMB
REV	DATE	REVISION	DRAWN	CHECKED

CLIENT
Blackwin Limited

PROJECT TITLE
Warehousing / Logistics and Office Development at Calmount Road

SHEET TITLE
Landscape Details
Sheet 1 of 3
Soft Landscape Details

SHEET NO.	SHEET SIZE
1878_PL_D_01	A1
SCALE	REVISION
As Shown	B
STAGE	DATE
PLANNING	06/09/22