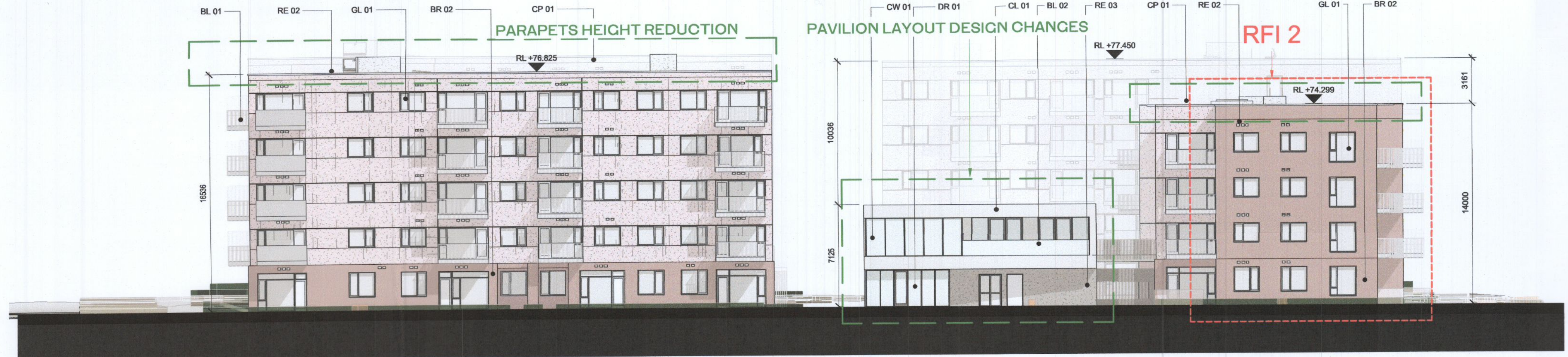
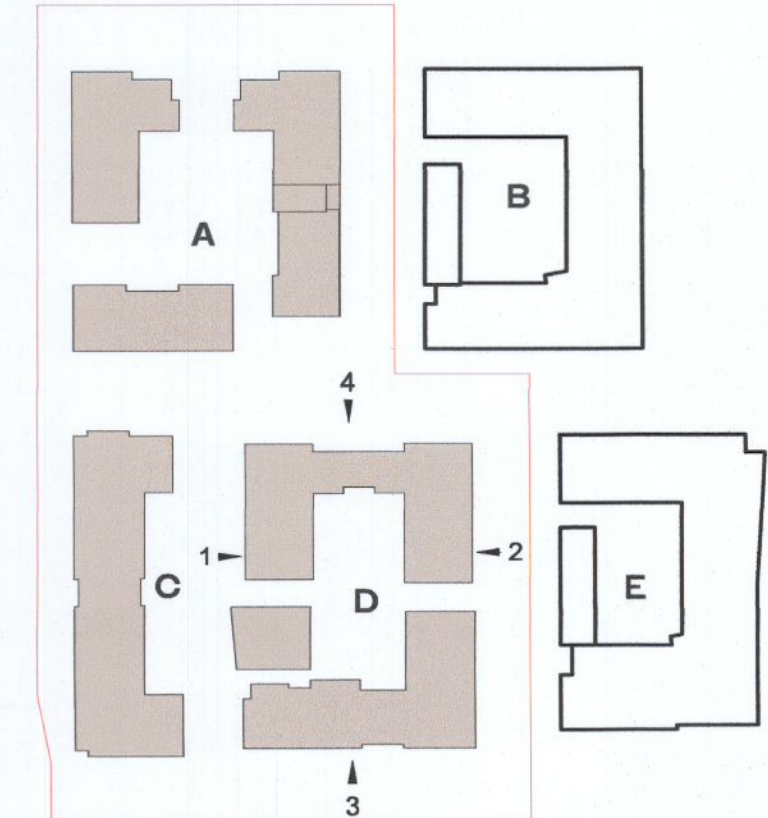


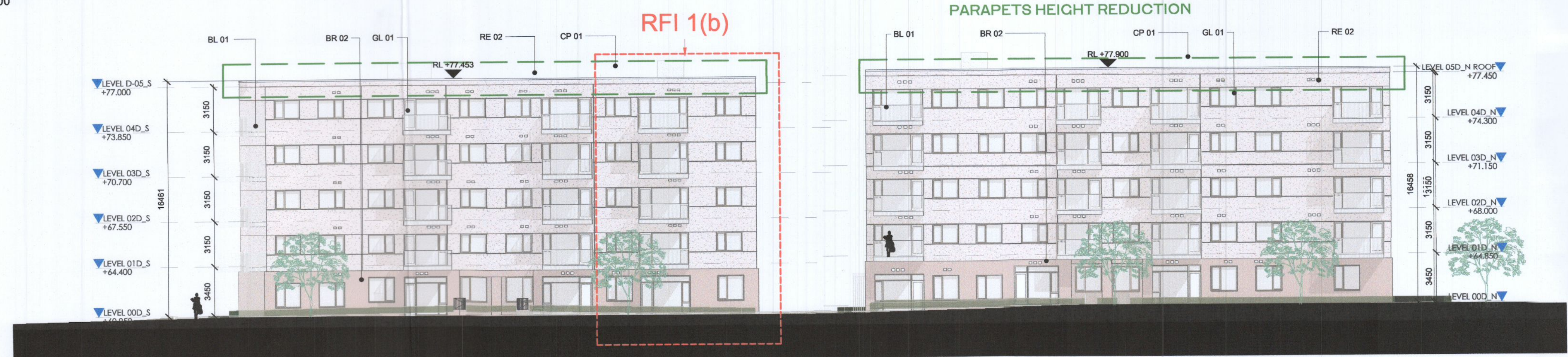
ALL DIMENSIONS TO BE CHECKED ON SITE
NO DIMENSIONS TO BE SCALED FROM THIS DRAWING
DRAWING IS TO BE READ IN CONJUNCTION WITH RELEVANT CONSULTANTS DRAWINGS



1 Block D - West Elevation
1 : 200

ELEVATION MATERIAL LEGEND

- BE 01 - METALIC BALCONY SCREEN WITH PPC FINISH
- BL 01 - BALCONY SYSTEM WITH PPC METAL RAILING
- BL 02 - BALCONY SYSTEM WITH GLAZED BALUSTRADE
- BL 03 - SELECTED RAINSCREEN CLADDING
- BR 01 - SELECTED LIGHT RED COLOURED BRICK
- BR 02 - SELECTED DARK RED COLOURED BRICK
- BR 03 - SELECTED LIGHT GREY COLOURED BRICK
- BR 04 - SELECTED GLAZED BRICK
- BR 05 - ARCHITECTURAL BRICK FEATURE
- CL 01 - RAINSCREEN CLADDING
- CP 01 - PRESSED ALUMINIUM CAPPING WITH PPC FINISH
- CW 01 - SELECTED CURTAIN WALL GLAZING SYSTEM
- DR 01 - SELECTED GLAZED ENTRANCE DOOR AND SIGNAGE
- DR 02 - METAL DOOR WITH PPC FINISH
- ES 01 - ESB DOORS
- GA 01 - GLAZED ENTRANCE GATE
- GL 01 - SELECTED DOUBLE GLAZED WINDOW SYSTEM
- MS 01 - SELECTED MESH SCREENING
- RE 01 - LIGHT EXTERNAL INSULATED RENDER FINISH
- RE 02 - LIGHT RED EXTERNAL RENDER FINISH
- RE 03 - DARK EXTERNAL INSULATED RENDER FINISH
- RL 01 - PPC METAL ENCLOSURE TO BICYCLE STORE
- RL 02 - PPC METAL GATE
- RL 03 - PPC METAL RAILINGS
- AB 01 - AIRBRICK
- CA 01 - FAIRFACED RC CANOPY
- PS 01 - PERFORATED METAL SCREEN GATES
- RP 01 - RAIN WATER PIPES
- SG 01 - SHADOW GAP IN RENDERED FINISH

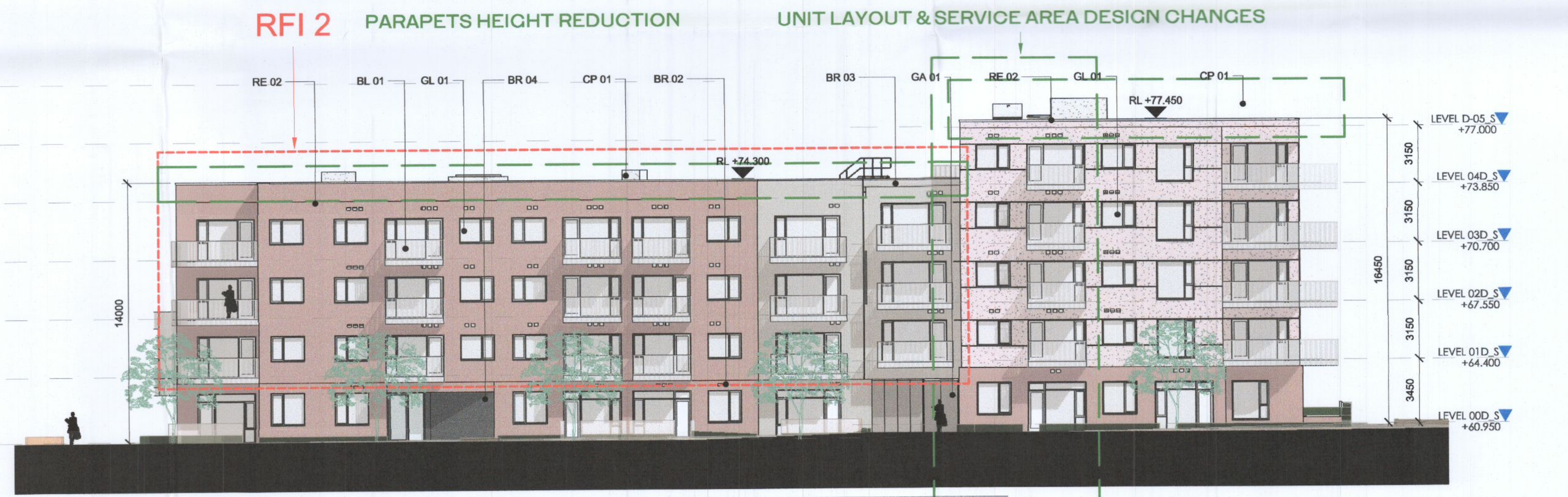


2 Block D - East Elevation
1 : 200

NON RFI RELATED CHANGES

- STATUTORY CHANGES
- DESIGN CHANGES

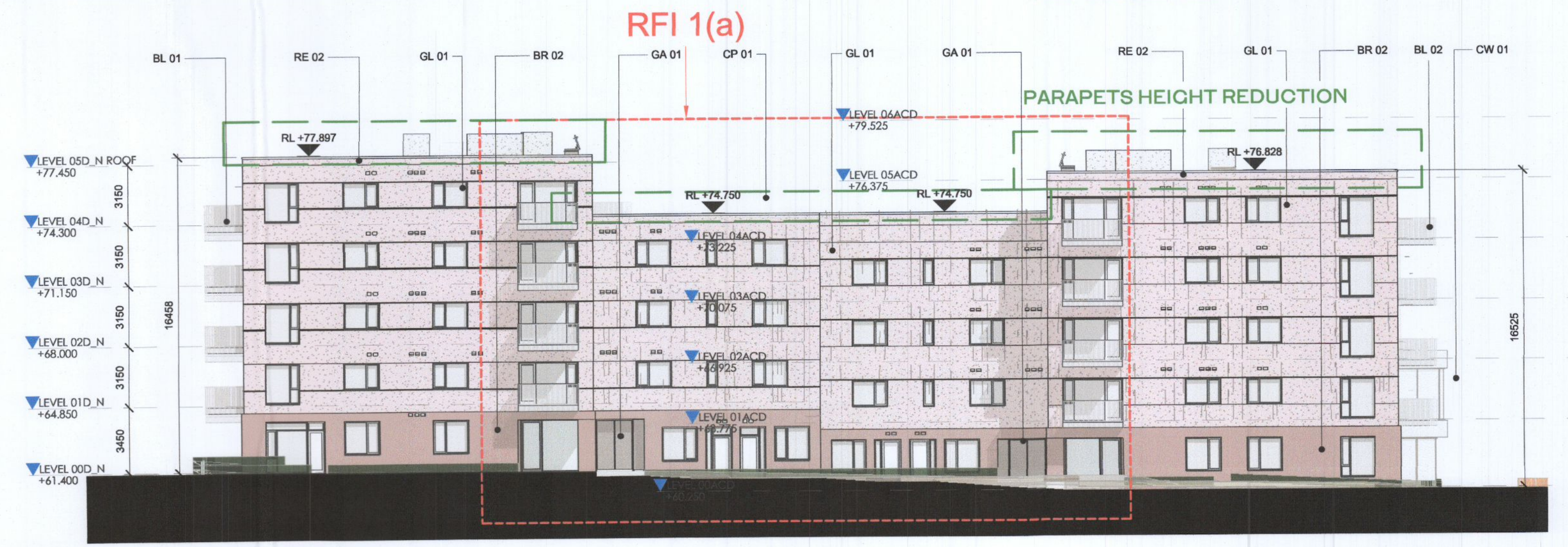
GENERAL NOTES:
O1 ALL INTERNAL APARTMENT LAYOUTS HAVE BEEN AMENDED DUE TO DESIGN DEVELOPMENT AND CO-ORDINATION WITH OTHER DISCIPLINES. THE INDIVIDUAL UNITS MAINTAIN THE SPACE REQUIREMENT GUIDELINES AS PER THE ORIGINAL PLANNING SUBMISSION
O2 MINOR AMENDMENTS TO M&E AND SE LAYOUTS DUE TO DESIGN DEVELOPMENT & TO ACCOMMODATE COMPLIANCE WITH STATUTORY REQUIREMENTS
O3 REDUCED PARAPET HEIGHT & FALL ARREST SYSTEM INTRODUCED TO BLOCKS A,C,D AND RESIDENT PAVILLION BUILDINGS DUE TO MAINTENANCE. PARAPET HEIGHT OF TOWER ELEMENT OF BLOCK C1 RETAINED AS PER ORIGINAL PLANNING APPLICATION



3 Block D - South Elevation
1 : 200

Red dash line indicates extent of amendments to address RFI 0723 dated 08 JUNE 2022

- RFI 1(a)**
Block D North - Changes to Core entrance hall facing Great Western Way updated to accommodate new apartment type T.301_D revised apartment type T.102_D
- RFI 1(b)**
Block D South - Changes to apartment type T.201_D and T.202_D to overcome privacy/overlooking issues
- RFI 2**
Block D South - Changes to facade material to brick on the upper floor levels



4 Block D - North Elevation
1 : 200

HJL Drawing Number on previously lodged planning application: SDZ22A/0005

ADC3-HJL-ACD-ZZ-DR-A-P2014 Revision (P01)

REV	DATE	DESCRIPTION	CHKD	DRN
P02	06/09/2022	ISSUED FOR FURTHER INFORMATION	RJ	SEN
P01	08/04/2022	ISSUED FOR PLANNING	RJ	FM

ISSUED FOR FURTHER INFORMATION

CLIENT
QUINTAIN IRELAND LTD.

PROJECT
ADAMSTOWN STATION BLOCKS ACD

DRAWING
BLOCK D ELEVATIONS

PROJECT NUMBER	DATE	STATUS CODE	DRAWING NUMBER	REVISION
850747	08/04/22	A1	ADC3-HJL-ACD-ZZ-DR-A-P2014	P02

Henry J Lyons

Architecture + Interiors
henryjlyons.com
+353 1 888 3333
info@henryjlyons.com
51-54 Pearse Street
Dublin D02 KA66