

ALL DIMENSIONS TO BE CHECKED ON SITE  
NO DIMENSIONS TO BE SCALED FROM THIS DRAWING  
DRAWING IS TO BE READ IN CONJUNCTION WITH RELEVANT CONSULTANTS DRAWINGS



1 Block P West Elevation  
1 : 100



2 Block P East Elevation  
1 : 100



3 Block P North Elevation  
1 : 100



4 Block P South Elevation  
1 : 100

PAVILION DESIGN LAYOUT CHANGES DUE TO DESIGN DEVELOPMENT

- NON RFI RELATED CHANGES**
- STATUTORY CHANGES
  - DESIGN CHANGES

**GENERAL NOTES:**  
O1 ALL INTERNAL APARTMENT LAYOUTS HAVE BEEN AMENDED DUE TO DESIGN DEVELOPMENT AND CO-ORDINATION WITH OTHER DISCIPLINES. THE INDIVIDUAL UNITS MAINTAIN THE SPACE REQUIREMENT GUIDELINES AS PER THE ORIGINAL PLANNING SUBMISSION  
O2 MINOR AMENDMENTS TO M&E AND SE LAYOUTS DUE TO DESIGN DEVELOPMENT & TO ACCOMMODATE COMPLIANCE WITH STATUTORY REQUIREMENTS  
O3 REDUCED PARAPET HEIGHT & FALL ARREST SYSTEM INTRODUCED TO BLOCKS A,C,D AND RESIDENT PAVILLION BUILDINGS DUE TO MAINTENANCE. PARAPET HEIGHT OF TOWER ELEMENT OF BLOCK C1 RETAINED AS PER ORIGINAL PLANNING APPLICATION

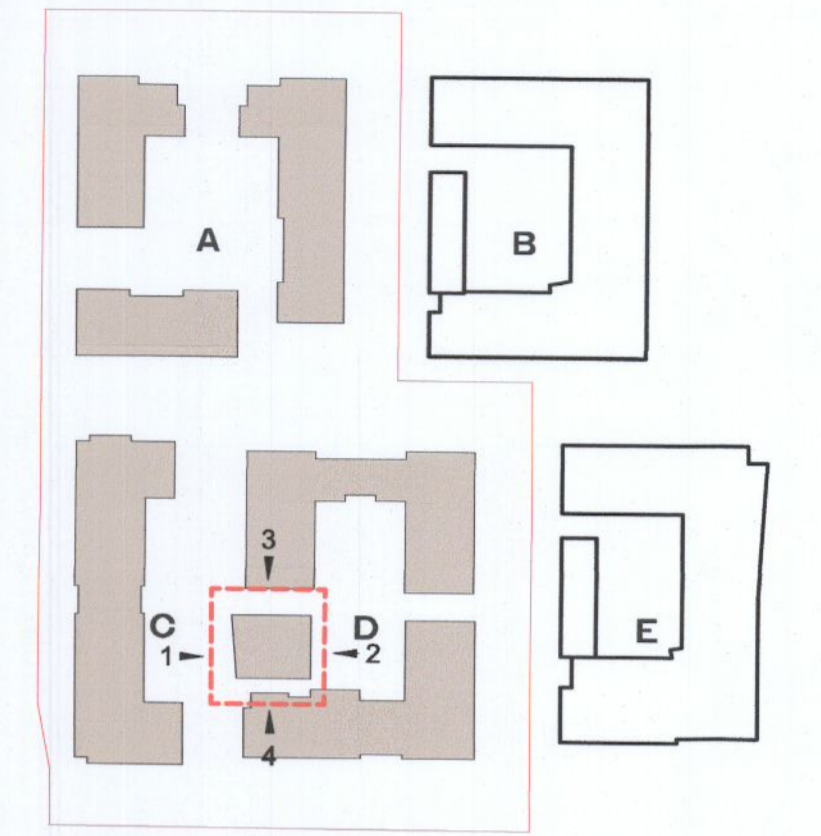
**RFI 1 (a)**  
Block D North - Changes to Core entrance hall facing Great Western Way updated to accommodate new apartment type T.301\_D revised apartment type T.102\_D

**RFI 1 (b)**  
Block D South - Changes to apartment type T.201\_D and T.202\_D to overcome privacy/overlooking issues

**RFI 2**  
Block D South - Changes to facade material to brick on the upper floor levels

  Red dash line indicates extent of amendments to address RFI 0723 dated 08 JUNE 2022

HJL Drawing Number on previously lodged planning application: SDZ22A/0005  
ADC3-HJL-ACD-ZZ-DR-A-P2020 Revision (P01)



- ELEVATION MATERIAL LEGEND**
- BE 01 - METALIC BALCONY SCREEN WITH PPC FINISH
  - BL 01 - BALCONY SYSTEM WITH PPC METAL RAILING
  - BL 02 - BALCONY SYSTEM WITH GLAZED BALUSTRADE
  - BL 03 - SELECTED RAINSCREEN CLADDING
  - BR 01 - SELECTED LIGHT RED COLOURED BRICK
  - BR 02 - SELECTED DARK RED COLOURED BRICK
  - BR 03 - SELECTED LIGHT GREY COLOURED BRICK
  - BR 04 - SELECTED GLAZED BRICK
  - BR 05 - ARCHITECTURAL BRICK FEATURE
  - CL 01 - RAINSCREEN CLADDING
  - CP 01 - PRESSED ALUMINIUM CAPPING WITH PPC FINISH
  - CW 01 - SELECTED CURTAIN WALL GLAZING SYSTEM
  - DR 01 - SELECTED GLAZED ENTRANCE DOOR AND SIGNAGE
  - DR 02 - METAL DOOR WITH PPC FINISH
  - ES 01 - ESB DOORS
  - GA 01 - GLAZED ENTRANCE GATE
  - GL 01 - SELECTED DOUBLE GLAZED WINDOW SYSTEM
  - MS 01 - SELECTED MESH SCREENING
  - RE 01 - LIGHT EXTERNAL INSULATED RENDER FINISH
  - RE 02 - LIGHT RED EXTERNAL RENDER FINISH
  - RE 03 - DARK EXTERNAL INSULATED RENDER FINISH
  - RL 01 - PPC METAL ENCLOSURE TO BICYCLE STORE
  - RL 02 - PPC METAL GATE
  - RL 03 - PPC METAL RAILINGS
  - AB 01 - AIRBRICK
  - CA 01 - FAIRFACED RC CANOPY
  - PS 01 - PERFORATED METAL SCREEN GATES
  - RP 01 - RAIN WATER PIPES
  - SG 01 - SHADOW GAP IN RENDERED FINISH

REV	DATE	DESCRIPTION	CHK	DRN
P02	06/09/2022	ISSUED FOR FURTHER INFORMATION	RJ	SEN
P01	08/04/2022	ISSUED FOR PLANNING	RJ	FM

STATUS CODE DESCRIPTION  
**SUITABLE FOR INFORMATION**

CLIENT  
**QUINTAIN IRELAND LTD.**

PROJECT  
**ADAMSTOWN STATION BLOCKS ACD**

DRAWING  
**RESIDENT'S PAVILLION ELEVATIONS**

PROJECT NUMBER	DATE	
950747	08/04/22	
SCALE@ A1:	DRAWN/CHECKED:	
As indicated	FW/ RJ	
STATUS CODE:	DRAWING NUMBER	REVISION
S2	ADC3-HJL-ACD-ZZ-DR-A-P2020	P02

**Henry J Lyons**  
Architecture • Interiors  
henryjlyons.com +353 1 888 3333 info@henryjlyons.com 51-54 Pearse Street Dublin D02 KA66