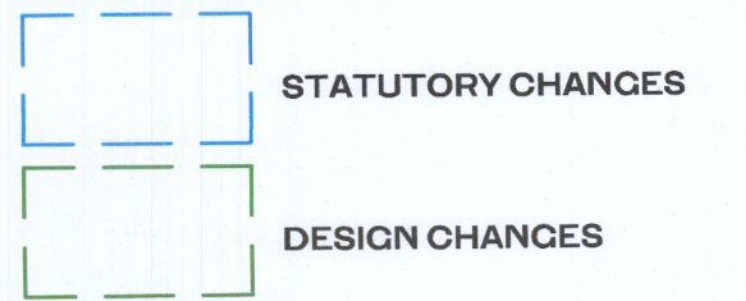
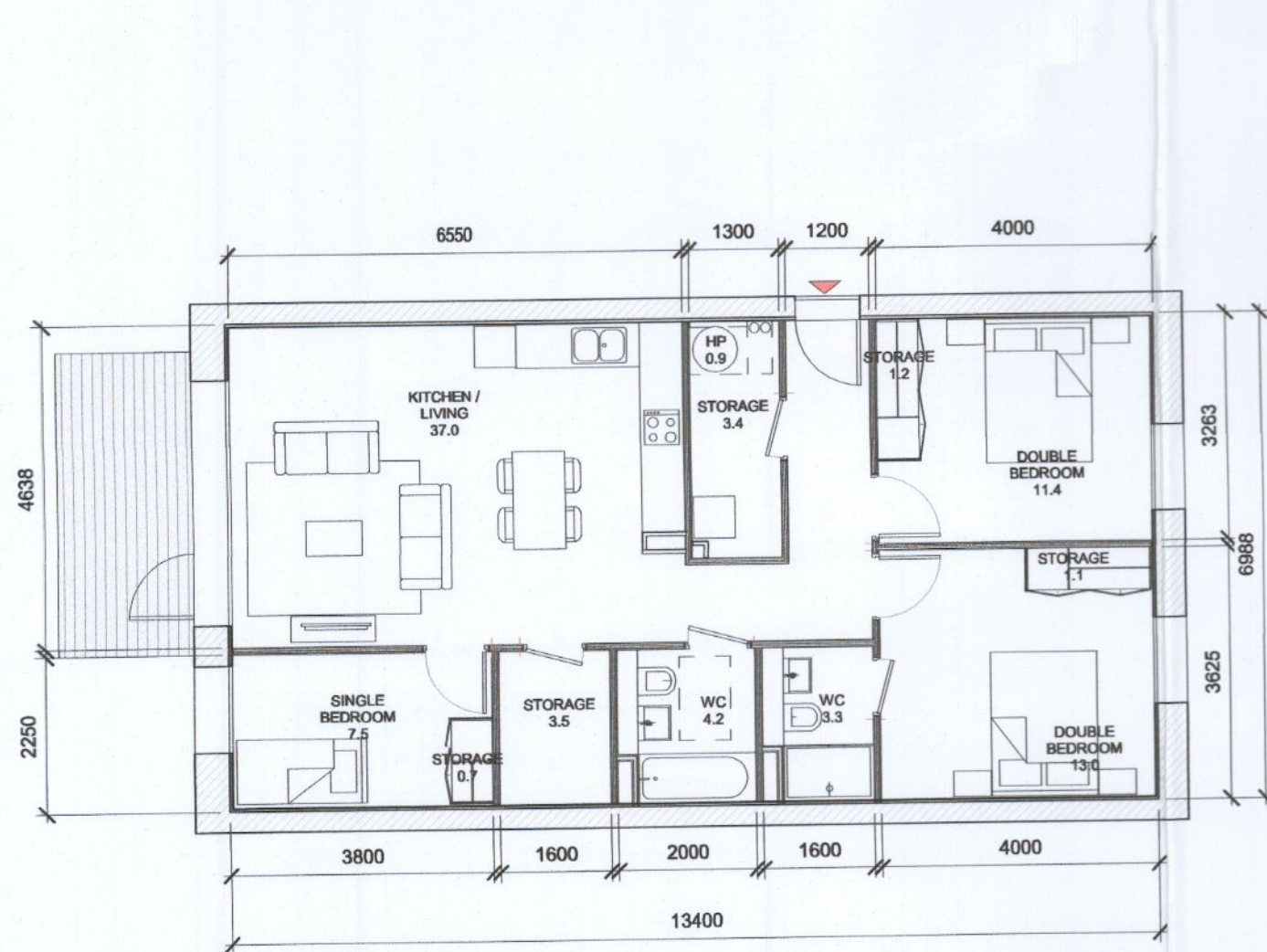


APARTMENT TYPES 3B						
Count	Unit Type	Type Name	Block	APARTMENT AREA		
				Area sqm	Min. Area	
4	3B	T.301_A	A	91.6	90.0	
4	3B	T.301_C	C	92.4	90.0	
2	3B	T.301_D	D	97.5	90.0	
2	3B	T.302_A	A	96.6	90.0	
3B: 12				Grand total: 12		

NON RFI RELATED CHANGES

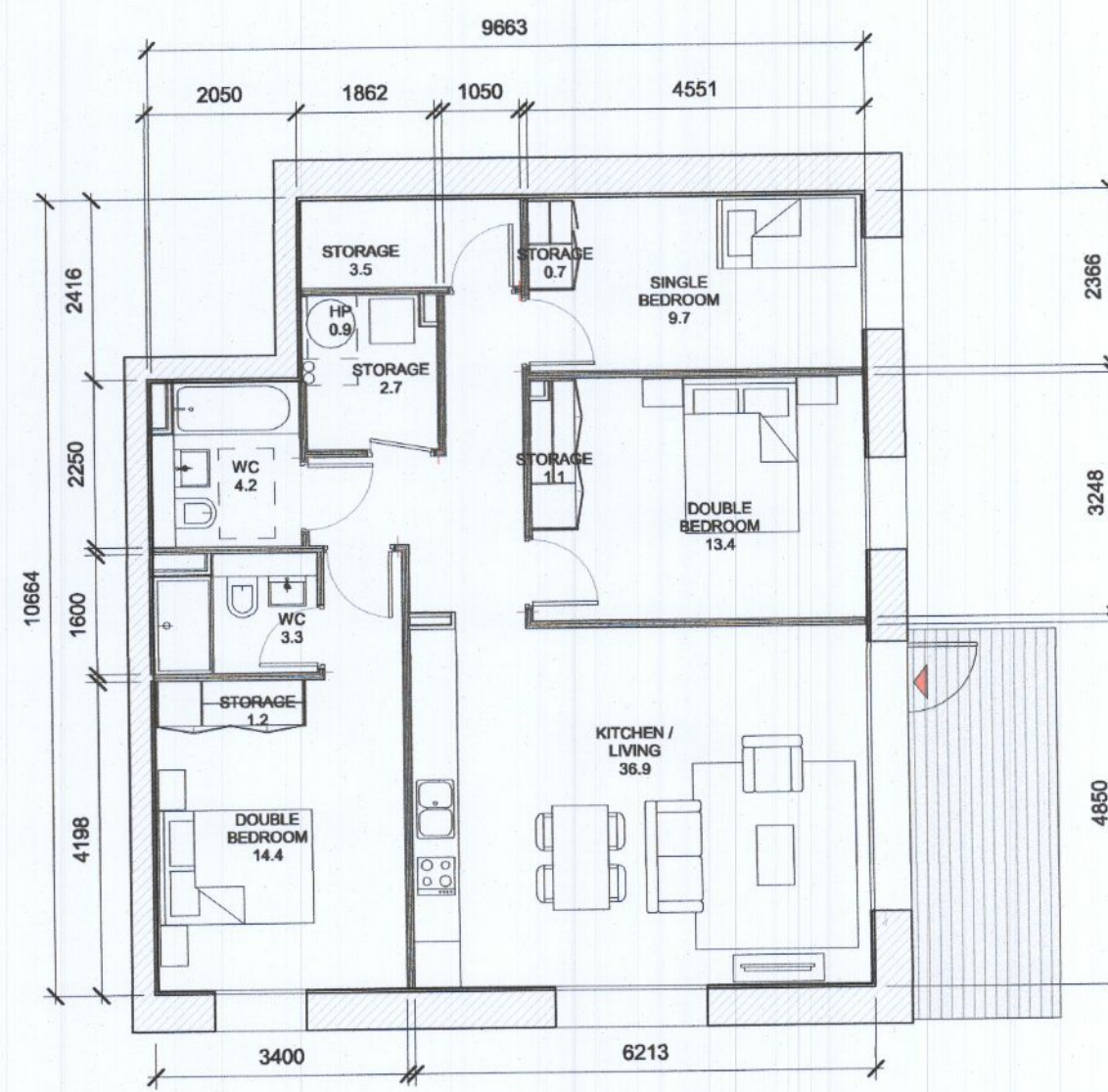


GENERAL NOTES:
 O1 ALL INTERNAL APARTMENT LAYOUTS HAVE BEEN AMENDED DUE TO DESIGN DEVELOPMENT AND CO-ORDINATION WITH OTHER DISCIPLINES. THE INDIVIDUAL UNITS MAINTAIN THE SPACE REQUIREMENT GUIDELINES AS PER THE ORIGINAL PLANNING SUBMISSION
 O2 MINOR AMENDMENTS TO M&E AND SE LAYOUTS DUE TO DESIGN DEVELOPMENT & TO ACCOMMODATE COMPLIANCE WITH STATUTORY REQUIREMENTS
 O3 REDUCED PARAPET HEIGHT & FALL ARREST SYSTEM INTRODUCED TO BLOCKS A,C,D AND RESIDENT PAVILION BUILDINGS DUE TO MAINTENANCE. PARAPET HEIGHT OF TOWER ELEMENT OF BLOCK C1 RETAINED AS PER ORIGINAL PLANNING APPLICATION



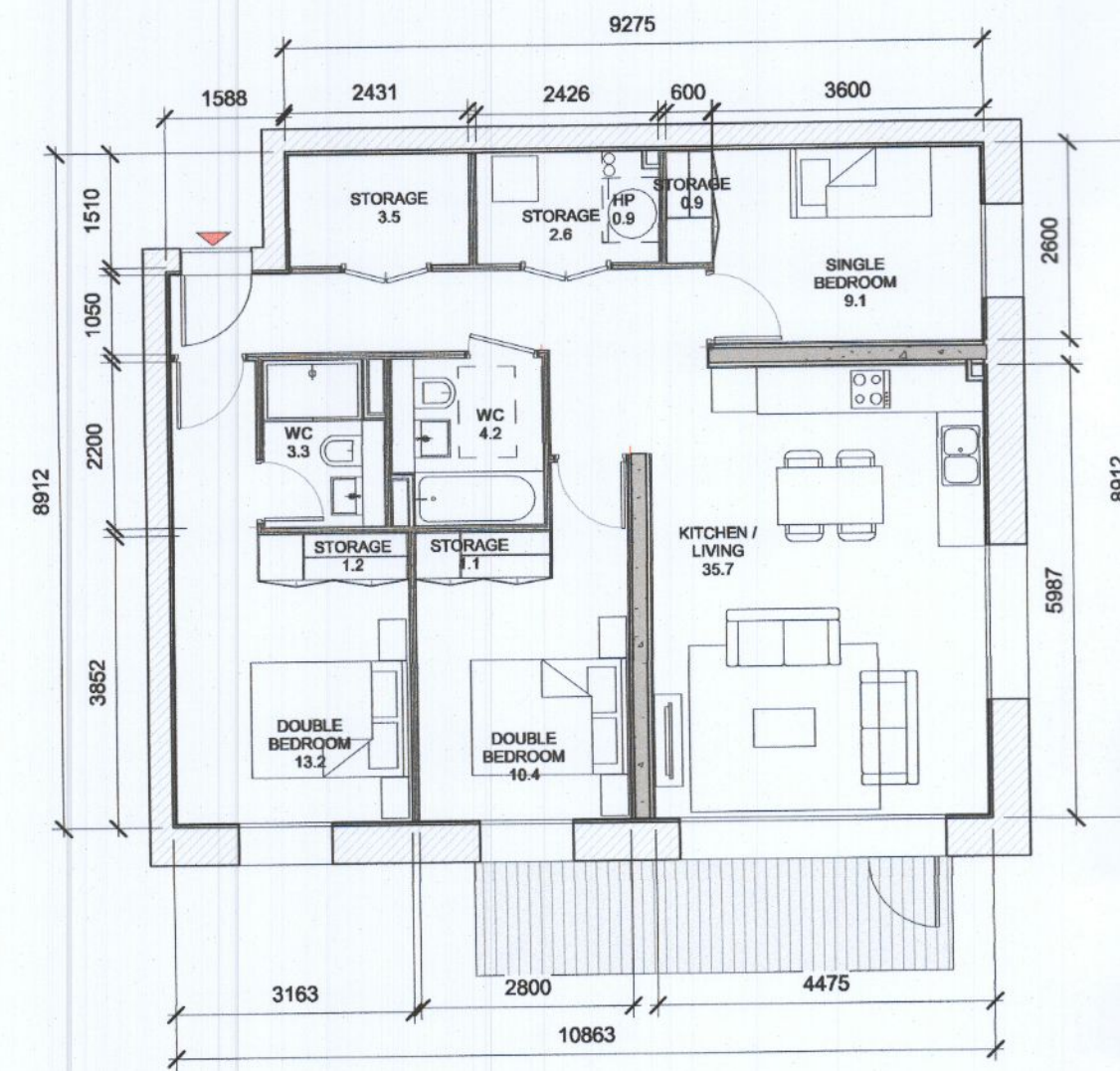
1 T.301 A
1:100

T.301_A SPACE REQUIREMENTS											
Apartment Area	Required Apartment Area	Required Area Met	Kitchen - Living Area	Required Kitchen - Living Area	Required Area Met	Total Bedroom Area	Required Total Bedroom Area	Required Area Met	Total Storage Area	Required Total Storage Area	Heat Pump Area
91.6 m ²	90.0 m ²	Yes	37.0 m ²	34.0 m ²	Yes	31.9 m ²	31.5 m ²	Yes	9.9 m ²	9.0 m ²	Yes 0.9 m ²



2 T.302 A
1:100

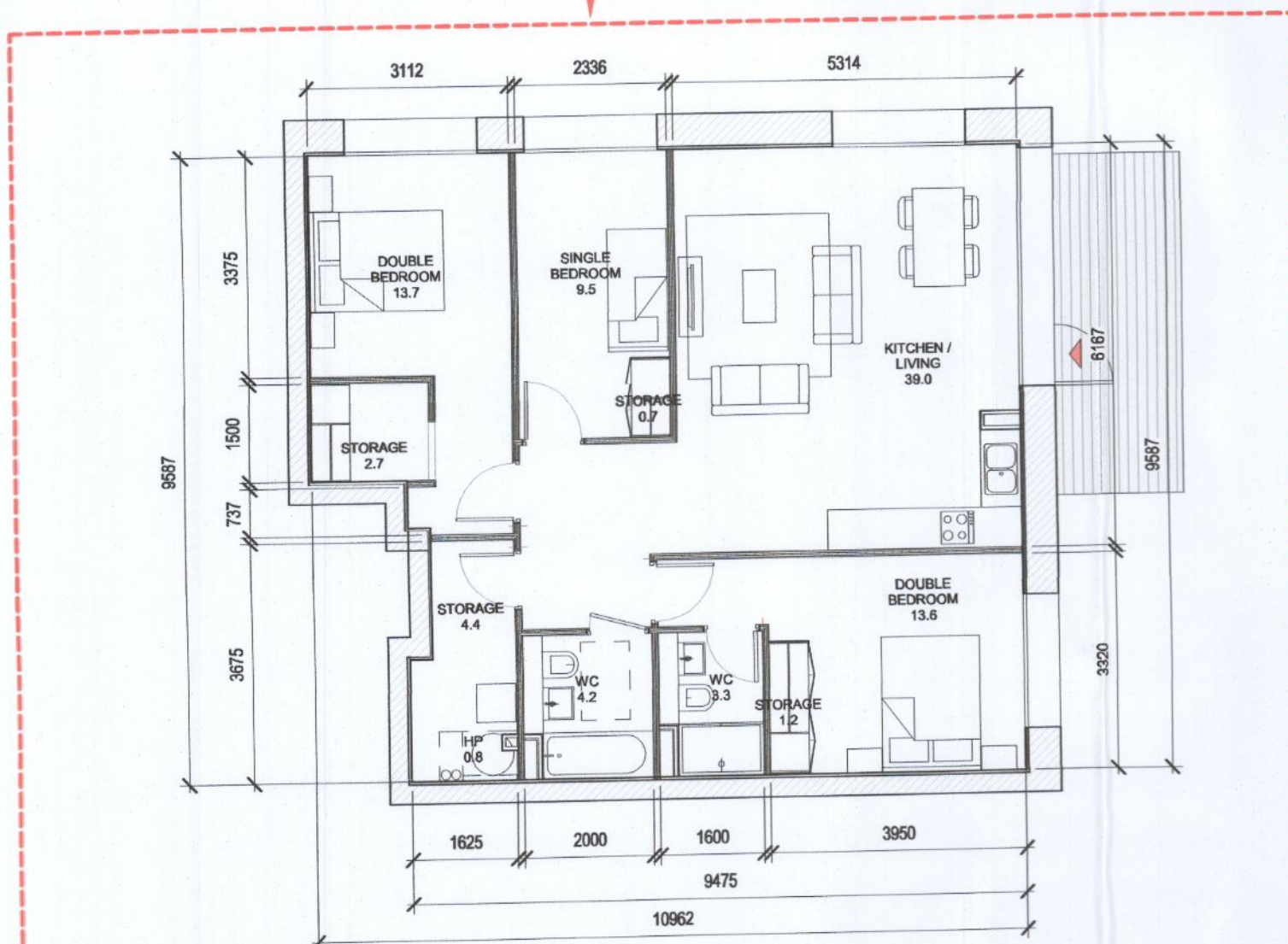
T.302_A SPACE REQUIREMENTS											
Apartment Area	Required Apartment Area	Required Area Met	Kitchen - Living Area	Required Kitchen - Living Area	Required Area Met	Total Bedroom Area	Required Total Bedroom Area	Required Area Met	Total Storage Area	Required Total Storage Area	Heat Pump Area
96.6 m ²	90.0 m ²	Yes	36.9 m ²	34.0 m ²	Yes	37.5 m ²	31.5 m ²	Yes	9.2 m ²	9.0 m ²	Yes 0.9 m ²



3 T.301 C
1:100

T.301_C SPACE REQUIREMENTS											
Apartment Area	Required Apartment Area	Required Area Met	Kitchen - Living Area	Required Kitchen - Living Area	Required Area Met	Total Bedroom Area	Required Total Bedroom Area	Required Area Met	Total Storage Area	Required Total Storage Area	Heat Pump Area
92.4 m ²	90.0 m ²	Yes	35.8 m ²	34.0 m ²	Yes	32.7 m ²	31.5 m ²	Yes	9.3 m ²	9.0 m ²	Yes 0.9 m ²

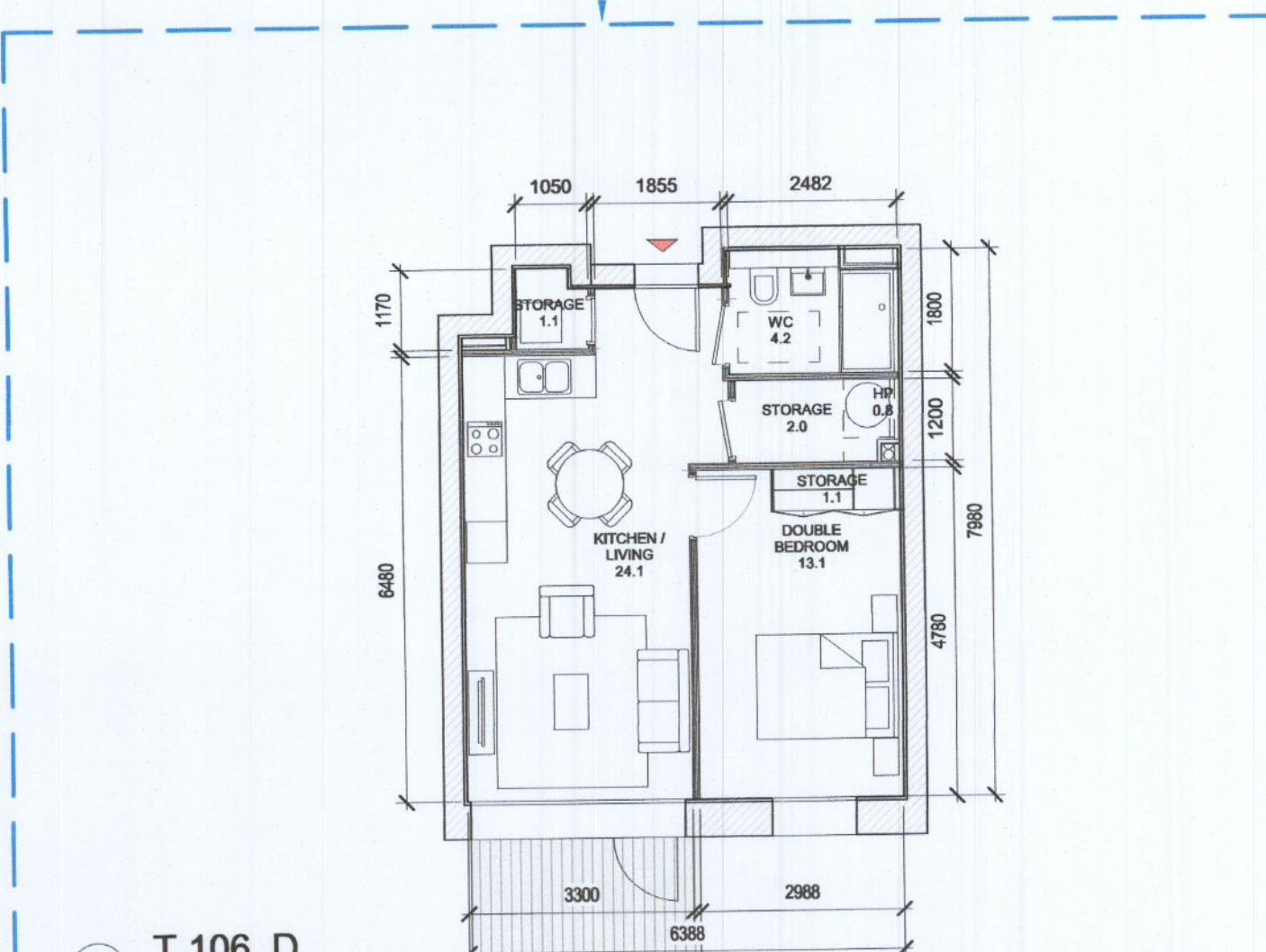
NEW TYPE



4 T.301 D
1:100

T.301_D SPACE REQUIREMENTS											
Apartment Area	Required Apartment Area	Required Area Met	Kitchen - Living Area	Required Kitchen - Living Area	Required Area Met	Total Bedroom Area	Required Total Bedroom Area	Required Area Met	Total Storage Area	Required Total Storage Area	Heat Pump Area
97.5 m ²	90.0 m ²	Yes	38.0 m ²	34.0 m ²	Yes	36.8 m ²	31.5 m ²	Yes	9.0 m ²	9.0 m ²	Yes 0.9 m ²

NEW TYPE AS PER FSC COMPLIANCE



5 T.106 D
1:100

T.106_D SPACE REQUIREMENTS											
Apartment Area	Required Apartment Area	Required Area Met	Kitchen - Living Area	Required Kitchen - Living Area	Required Area Met	Total Bedroom Area	Required Total Bedroom Area	Required Area Met	Total Storage Area	Required Total Storage Area	Heat Pump Area
48.5 m ²	45.0 m ²	Yes	24.2 m ²	23.0 m ²	Yes	13.2 m ²	11.4 m ²	Yes	4.2 m ²	3.0 m ²	Yes 0.9 m ²

Red dash line indicates extent of amendments to address RFI 0723 dated 08 JUNE 2022

HJL Drawing Number on previously lodged planning application: SD22A/0005
 ADC3-HJL-ACD-ZZ-DR-A-P8006 Revision (P01)

REV	DATE	DESCRIPTION	CHK	DRN
P02	06/09/2022	ISSUED FOR FURTHER INFORMATION	RJ	SEN
P01	08/04/2022	ISSUED FOR PLANNING	RJ	FM
REV	DATE	DESCRIPTION	CHK	DRN

ISSUED FOR FURTHER INFORMATION

CLIENT
 QUINTAIN IRELAND LTD.

PROJECT
 ADAMSTOWN STATION BLOCKS ACD

DRAWING
 APARTMENT TYPES Sheet 6
 3B Apartments

PROJECT NUMBER: 956747 DATE: 08/04/22
 SCALE@ A1: As indicated DRAWN/CHECKED: SEN/RJ

STATUS CODE: A1 DRAWING NUMBER: ADC3-HJL-ACD-ZZ-DR-A-P8006 REVISION: P02

Henry J Lyons

Architecture + Interiors
 henryjlyons.com +353 1 888 3333 info@henryjlyons.com 51-54 Pearse Street Dublin D02 K466