

Red dash line indicates extent of amendments to address RFI 0723 dated 08 JUNE 2022

HJL Drawing Number on previously lodged planning application: SDZ22A/0005
ADC3-HJL-ACD-ZZ-DR-A-P8005 Revision (PO1)

ALL DIMENSIONS TO BE CHECKED ON SITE
NO DIMENSIONS TO BE SCALED FROM THIS DRAWING
DRAWING IS TO BE READ IN CONJUNCTION WITH RELEVANT CONSULTANTS DRAWINGS

APARTMENT TYPES 2B						
Count	Apartment Type	Type Name	Block	Area sqm	Min. Area	
4	2B-3P	T.201_C	C	70.8	63.0	
8	2B-3P	T.201_D	D	65.7	63.0	
1	2B-3P	T.202_C	C	63.2	63.0	
2	2B-3P	T.202_D	D	68.2	63.0	
1	2B-3P	T.203_D	D	71.9	63.0	

2	2B-4P	T.201_A	A	73.2	73.0	
4	2B-4P	T.202_A	A	74.0	73.0	
4	2B-4P	T.203_A	A	73.8	73.0	
13	2B-4P	T.203_C	C	75.8	73.0	
8	2B-4P	T.204_A	A	73.7	73.0	
16	2B-4P	T.204_C	C	73.6	73.0	
16	2B-4P	T.204_D	D	73.6	73.0	
8	2B-4P	T.204_D	D	74.3	73.0	
8	2B-4P	T.205_A	A	81.2	73.0	
4	2B-4P	T.205_C	C	75.4	73.0	
4	2B-4P	T.205_D	D	76.7	73.0	
27	2B-4P	T.206_A	A	75.9	73.0	
1	2B-4P	T.206_C	C	73.3	73.0	
6	2B-4P	T.206_D	D	80.7	73.0	
8	2B-4P	T.207_A	A	74.9	73.0	
16	2B-4P	T.207_C	C	73.3	73.0	
1	2B-4P	T.207_D	D	81.6	73.0	
2	2B-4P	T.208_A	A	77.2	73.0	
5	2B-4P	T.208_C	C	73.6	73.0	
16	2B-4P	T.208_D	D	80.3	73.0	
2	2B-4P	T.209_A	A	73.4	73.0	
4	2B-4P	T.209_D	D	82.8	73.0	
2	2B-4P	T.210_A	A	78.0	73.0	
3	2B-4P	T.210_D	D	81.5	73.0	
1	2B-4P	T.211_D	D	78.8	73.0	
3	2B-4P	T.212_D	D	78.9	73.0	
3	2B-4P	T.213_D	D	74.0	73.0	
2	2B-4P	T.214_D	D	83.3	73.0	
1	2B-4P	T.215_D	D	76.3	73.0	
1	2B-4P	T.216_D	D	75.7	73.0	
1	2B-4P	T.217_D	D	85.2	73.0	
3	2B-4P	T.218_D	D	82.4	73.0	

Grand total: 211
NON RFI RELATED CHANGES



GENERAL NOTES:
O1 ALL INTERNAL APARTMENT LAYOUTS HAVE BEEN AMENDED DUE TO DESIGN DEVELOPMENT AND CO-ORDINATION WITH OTHER DISCIPLINES. THE INDIVIDUAL UNITS MAINTAIN THE SPACE REQUIREMENT GUIDELINES AS PER THE ORIGINAL PLANNING SUBMISSION
O2 MINOR AMENDMENTS TO M&E AND SE LAYOUTS DUE TO DESIGN DEVELOPMENT & TO ACCOMMODATE COMPLIANCE WITH STATUTORY REQUIREMENTS
O3 REDUCED PARAPET HEIGHT & FALL ARREST SYSTEM INTRODUCED TO BLOCKS A,C,D AND RESIDENT PAVILION BUILDINGS DUE TO MAINTENANCE. PARAPET HEIGHT OF TOWER ELEMENT OF BLOCK C1 RETAINED AS PER ORIGINAL PLANNING APPLICATION

REV	DATE	DESCRIPTION	CHK	DRN
P02	06/02/2022	ISSUED FOR FURTHER INFORMATION	RJ	SEN
P01	06/04/2022	ISSUED FOR PLANNING	RJ	FM

STATUS CODE DESCRIPTION
ISSUED FOR FURTHER INFORMATION

CLIENT
QUINTAIN IRELAND LTD.

PROJECT
ADAMSTOWN STATION BLOCKS ACD

DRAWING
APARTMENT TYPES Sheet 5
2B Apartments

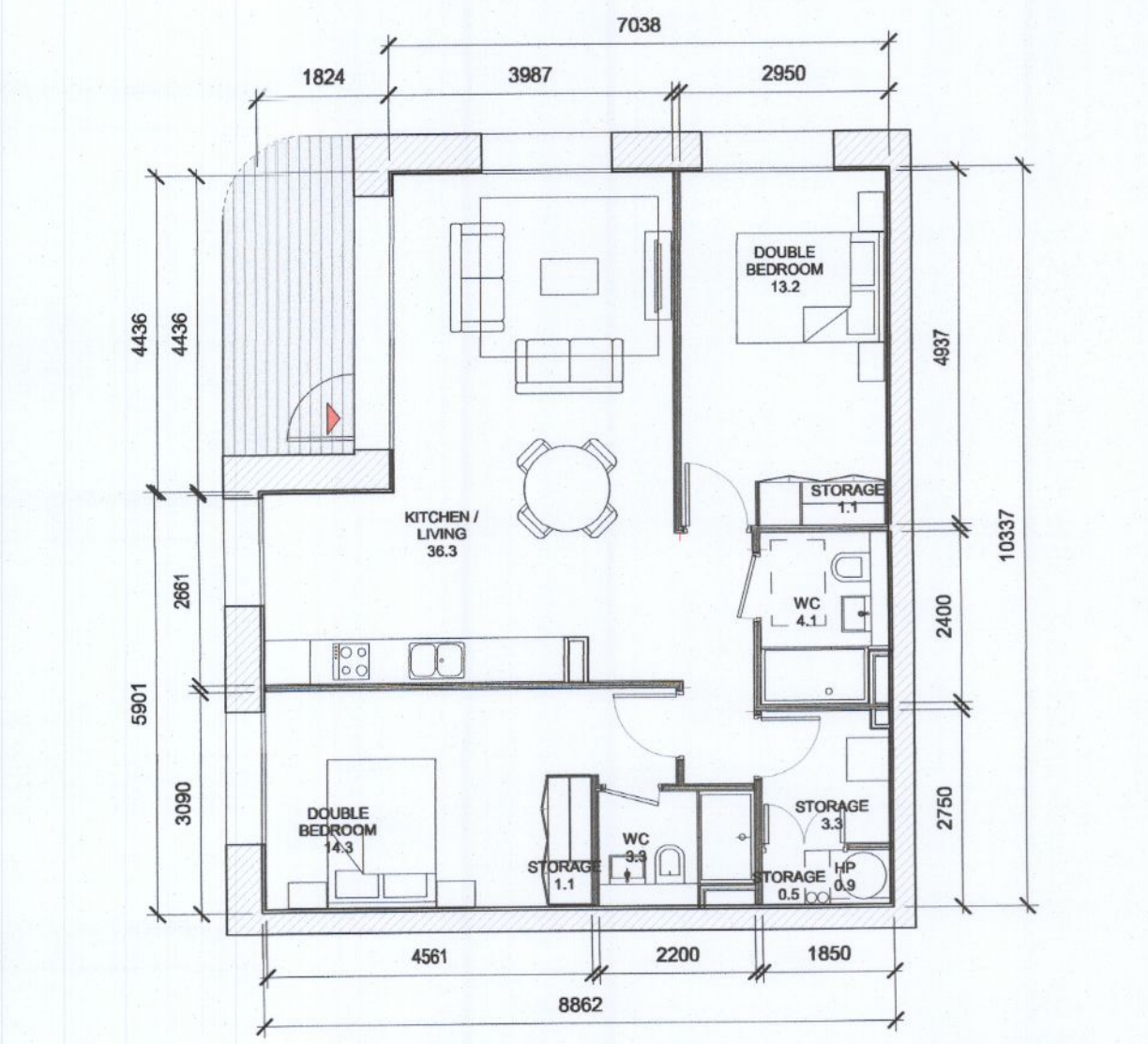
PROJECT NUMBER: 950747 DATE: 09/04/22

SCALE@ A1: As indicated DRAWN/CHECKED: SEW/RJ

STATUS CODE: A1 DRAWING NUMBER: ADC3-HJL-ACD-ZZ-DR-A-P8005 REVISION: P02

Henry J Lyons
Architects + Interiors
henryjlyons.com

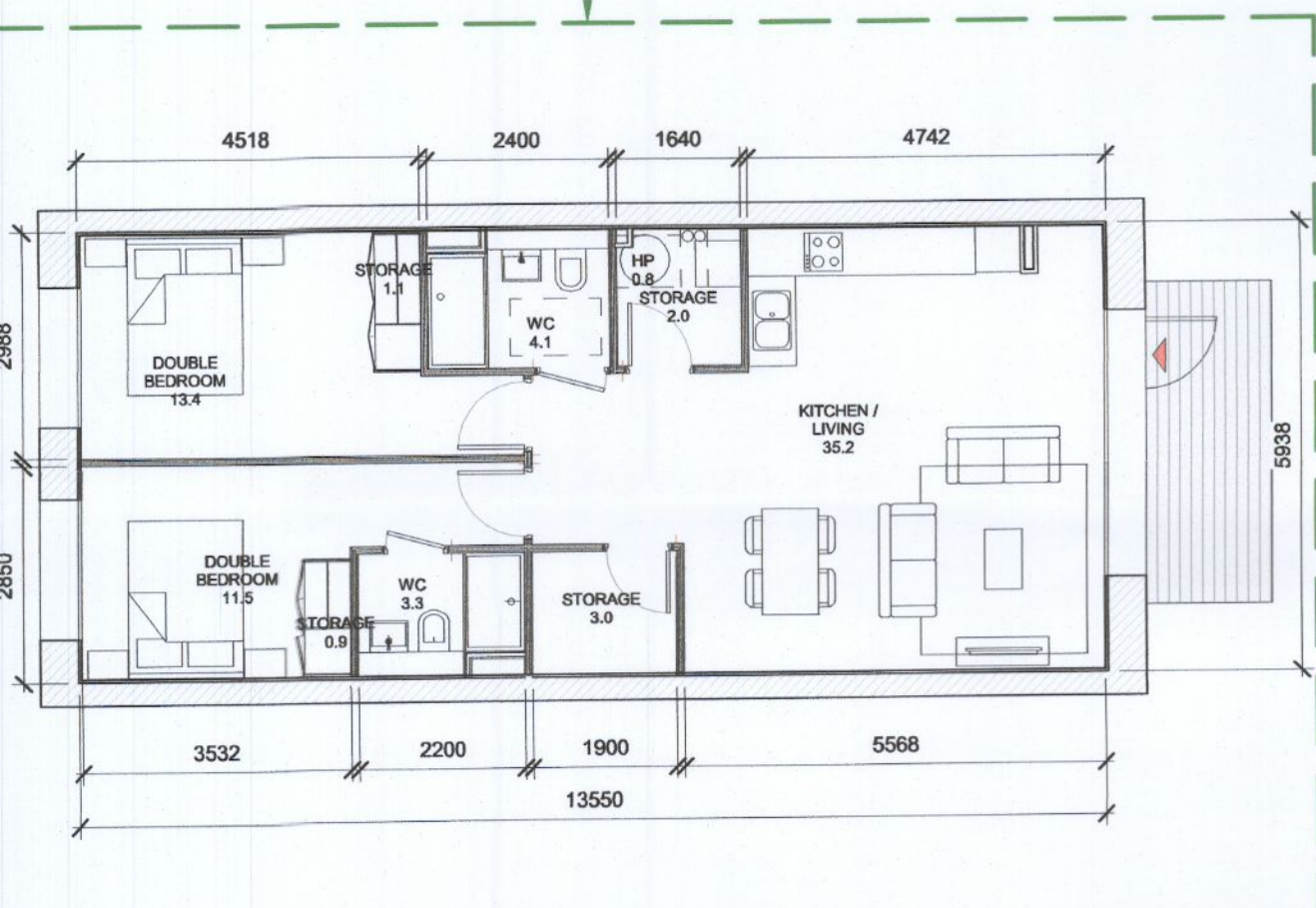
+353 1 858 3333 info@henryjlyons.com 51-54 Peasars Street Dublin D02 K466



1 T.207 D
1:100

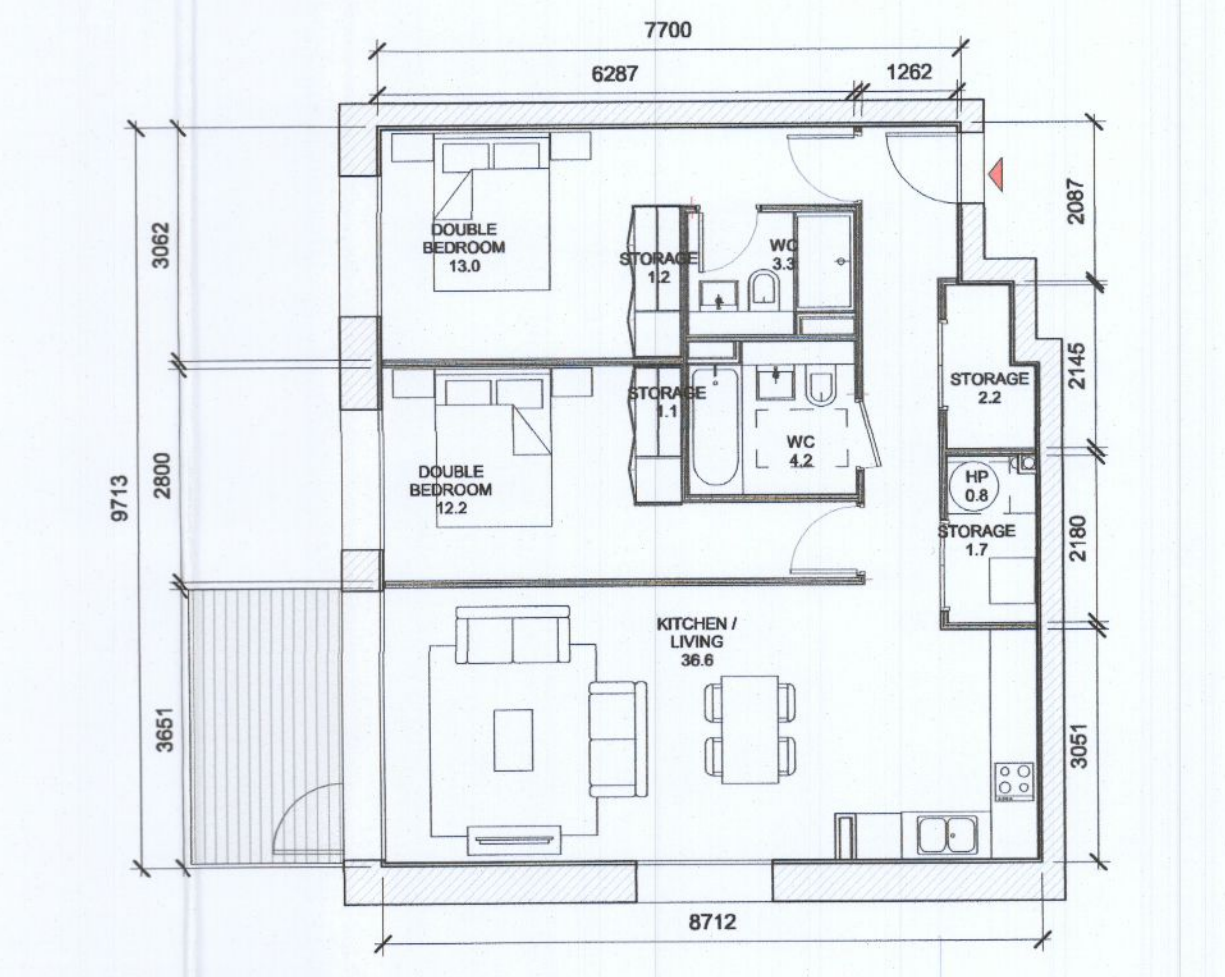
T.207_D SPACE REQUIREMENTS														
Apartment Area	Required Apartment Area	Required Area Met	Kitchen - Living Area	Required Kitchen - Living Area	Required Area Met	Total Bedroom Area	Required Total Bedroom Area	Required Area Met	Total Storage Area	Required Total Storage Area	Required Area Met	Heat Pump Area	Required Heat Pump Area	Required Area Met
81.6 m²	73.0 m²	Yes	36.3 m²	30.0 m²	Yes	27.5 m²	24.4 m²	Yes	6.0 m²	6.0 m²	Yes	0.9 m²	0.9 m²	Yes

UPDATED TYPE



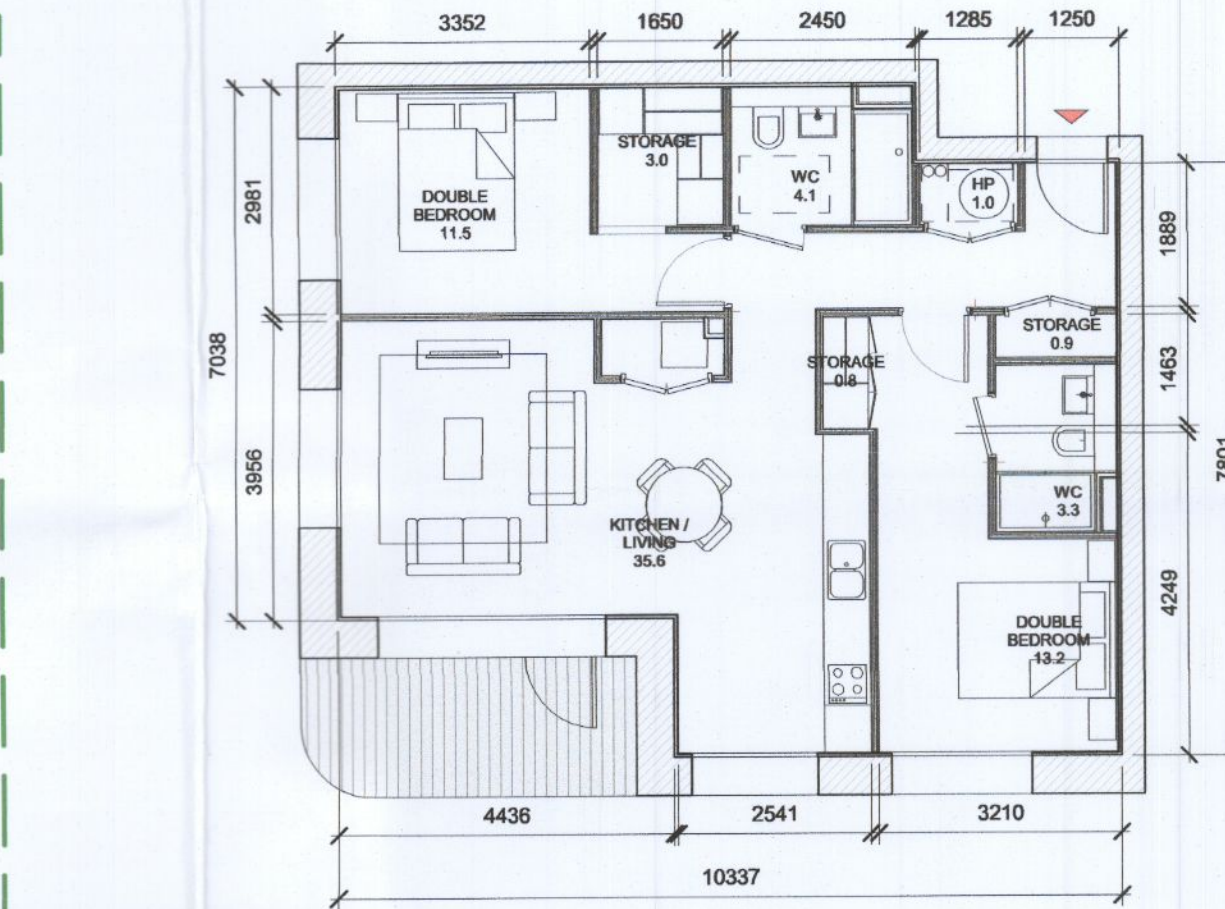
5 T.211 D
1:100

T.211_D SPACE REQUIREMENTS														
Apartment Area	Required Apartment Area	Required Area Met	Kitchen - Living Area	Required Kitchen - Living Area	Required Area Met	Total Bedroom Area	Required Total Bedroom Area	Required Area Met	Total Storage Area	Required Total Storage Area	Required Area Met	Heat Pump Area	Required Heat Pump Area	Required Area Met
78.8 m²	73.0 m²	Yes	35.2 m²	30.0 m²	Yes	24.9 m²	24.4 m²	Yes	7.0 m²	6.0 m²	Yes	0.9 m²	0.9 m²	Yes



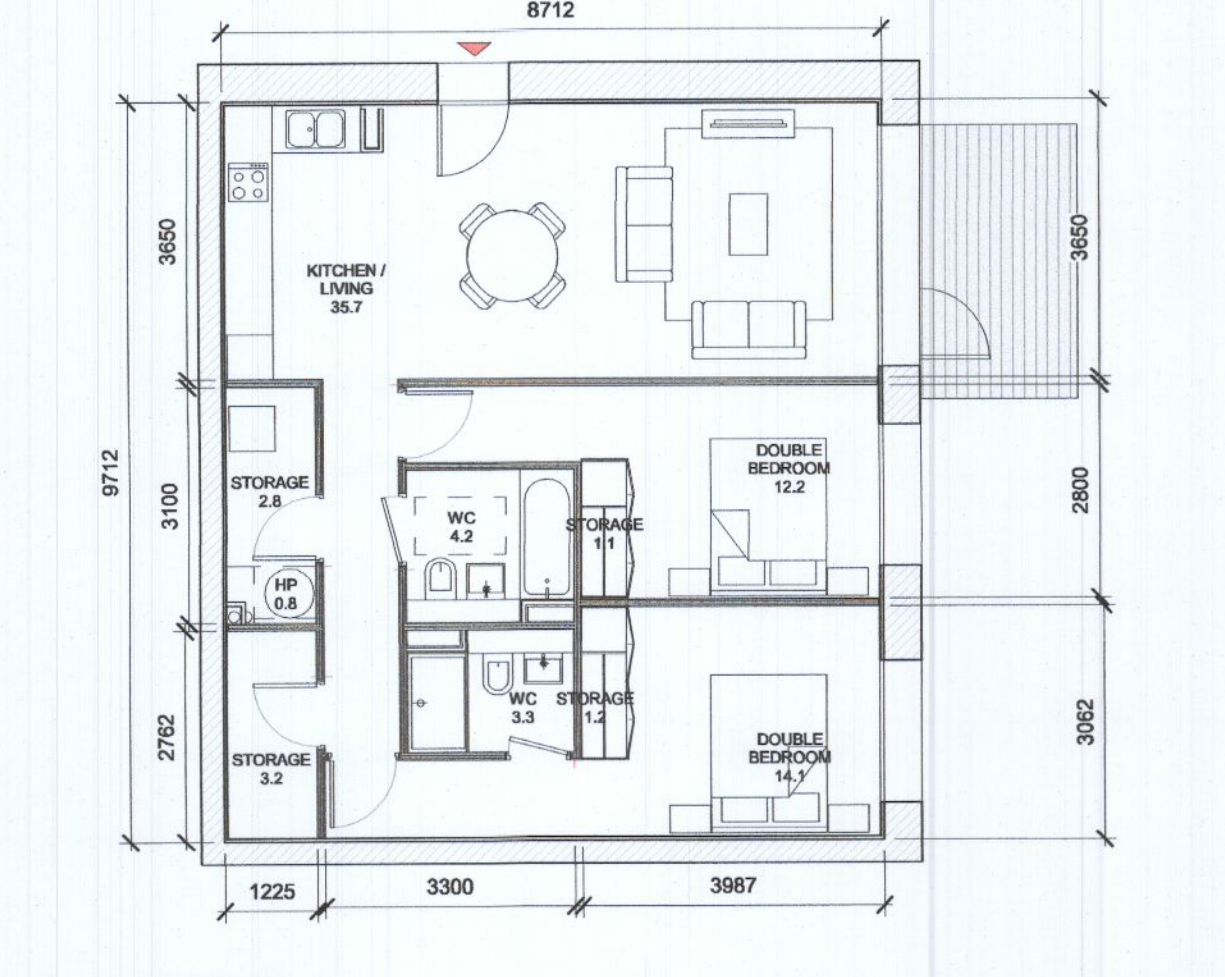
2 T.208 D
1:100

T.208_D SPACE REQUIREMENTS														
Apartment Area	Required Apartment Area	Required Area Met	Kitchen - Living Area	Required Kitchen - Living Area	Required Area Met	Total Bedroom Area	Required Total Bedroom Area	Required Area Met	Total Storage Area	Required Total Storage Area	Required Area Met	Heat Pump Area	Required Heat Pump Area	Required Area Met
80.3 m²	71.0 m²	Yes	36.6 m²	30.0 m²	Yes	25.2 m²	24.4 m²	Yes	6.2 m²	6.0 m²	Yes	0.9 m²	0.9 m²	Yes



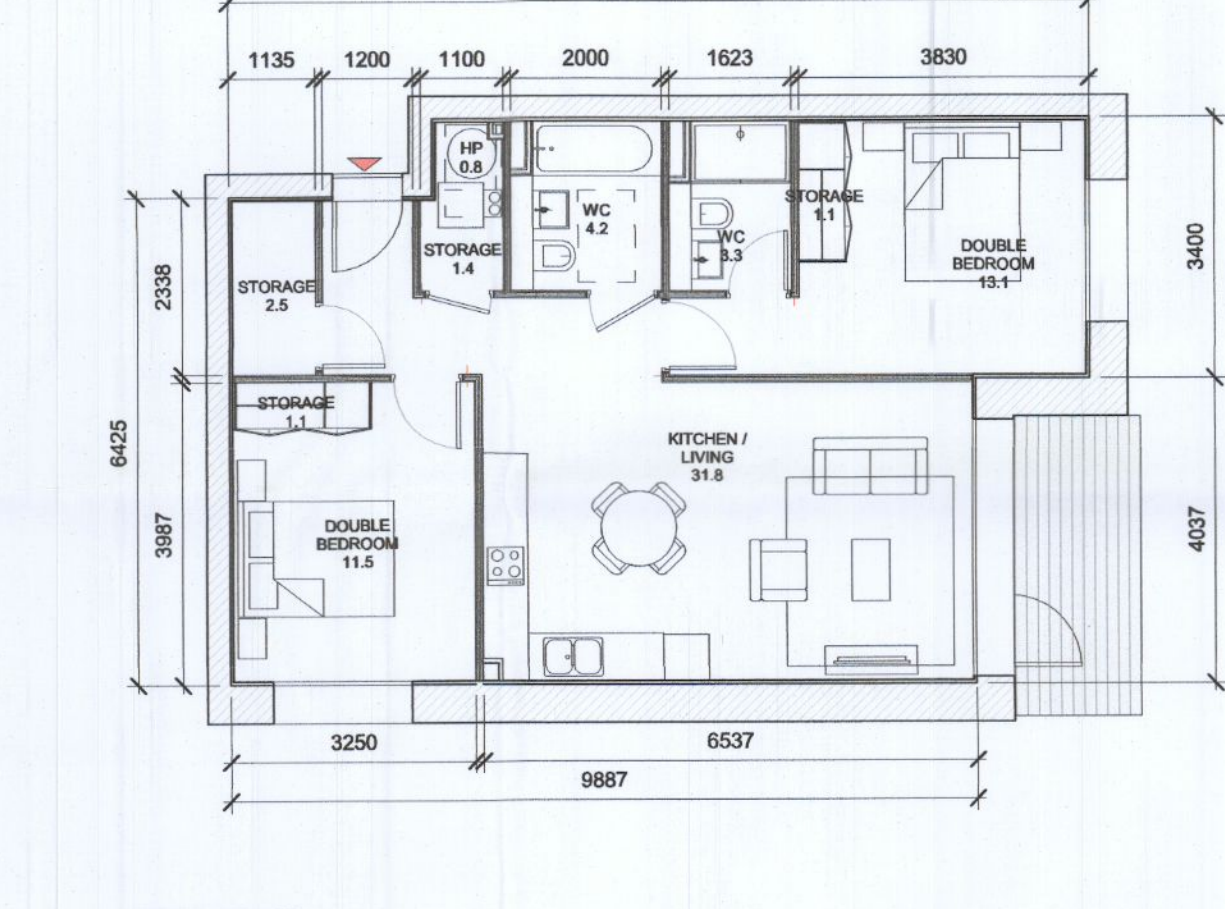
6 T.212 D
1:100

T.212_D SPACE REQUIREMENTS														
Apartment Area	Required Apartment Area	Required Area Met	Kitchen - Living Area	Required Kitchen - Living Area	Required Area Met	Total Bedroom Area	Required Total Bedroom Area	Required Area Met	Total Storage Area	Required Total Storage Area	Required Area Met	Heat Pump Area	Required Heat Pump Area	Required Area Met
78.9 m²	73.0 m²	Yes	35.6 m²	30.0 m²	Yes	24.7 m²	24.4 m²	Yes	6.0 m²	6.0 m²	Yes	1.0 m²	1.0 m²	Yes



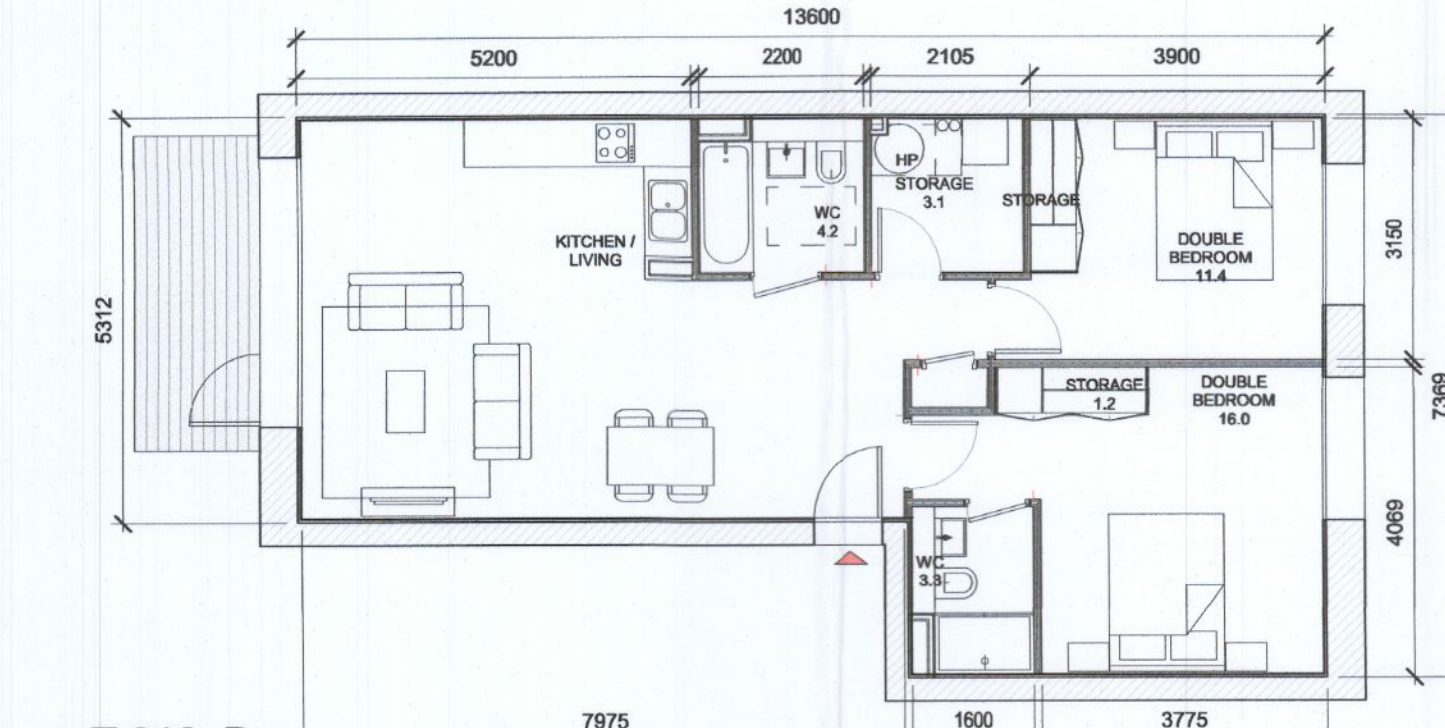
3 T.209 D
1:100

T.209_D SPACE REQUIREMENTS														
Apartment Area	Required Apartment Area	Required Area Met	Kitchen - Living Area	Required Kitchen - Living Area	Required Area Met	Total Bedroom Area	Required Total Bedroom Area	Required Area Met	Total Storage Area	Required Total Storage Area	Required Area Met	Heat Pump Area	Required Heat Pump Area	Required Area Met
82.8 m²	73.0 m²	Yes	35.7 m²	30.0 m²	Yes	26.3 m²	24.4 m²	Yes	8.3 m²	6.0 m²	Yes	0.9 m²	0.9 m²	Yes



7 T.213 D
1:100

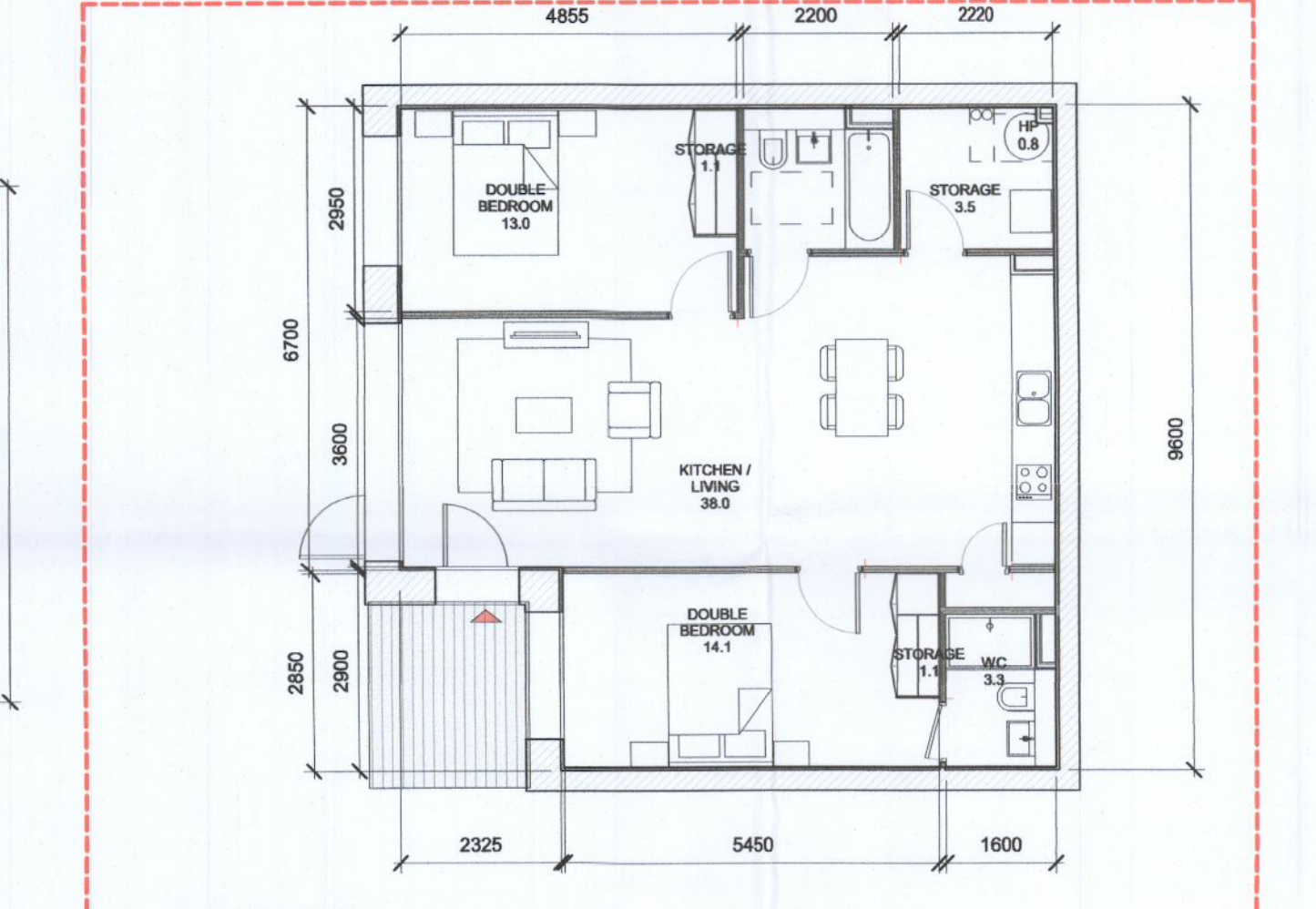
T.213_D SPACE REQUIREMENTS														
Apartment Area	Required Apartment Area	Required Area Met	Kitchen - Living Area	Required Kitchen - Living Area	Required Area Met	Total Bedroom Area	Required Total Bedroom Area	Required Area Met	Total Storage Area	Required Total Storage Area	Required Area Met	Heat Pump Area	Required Heat Pump Area	Required Area Met
74.0 m²	73.0 m²	Yes	31.8 m²	30.0 m²	Yes	24.6 m²	24.4 m²	Yes	6.1 m²	6.0 m²	Yes	0.9 m²	0.9 m²	Yes



4 T.210 D
1:100

T.210_D SPACE REQUIREMENTS														
Apartment Area	Required Apartment Area	Required Area Met	Kitchen - Living Area	Required Kitchen - Living Area	Required Area Met	Total Bedroom Area	Required Total Bedroom Area	Required Area Met	Total Storage Area	Required Total Storage Area	Required Area Met	Heat Pump Area	Required Heat Pump Area	Required Area Met
61.5 m²	73.0 m²	Yes	36.6 m²	30.0 m²	Yes	27.4 m²	24.4 m²	Yes	6.0 m²	6.0 m²	Yes	0.9 m²	0.9 m²	Yes

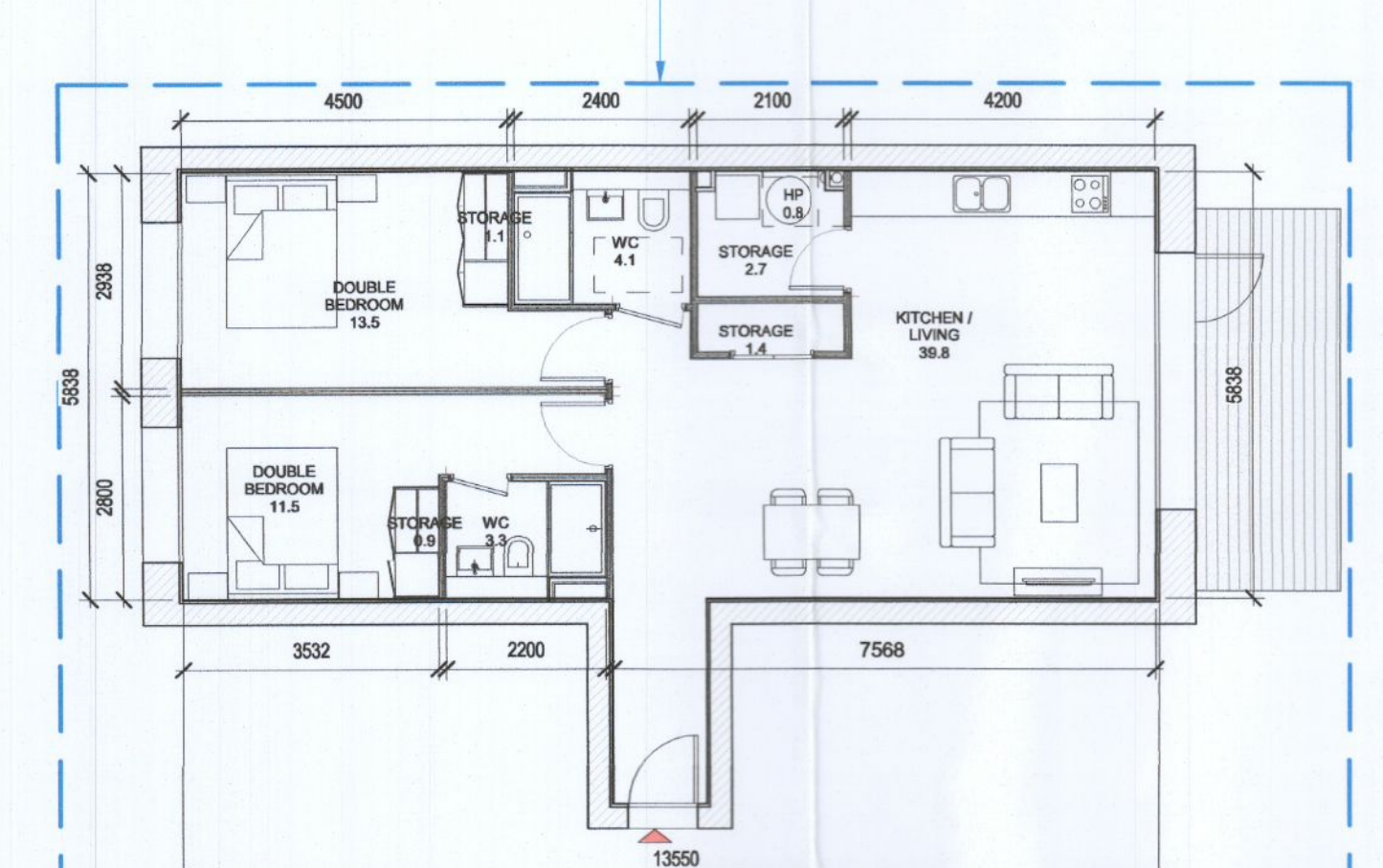
UPDATED TYPE



8 T.214 D
1:100

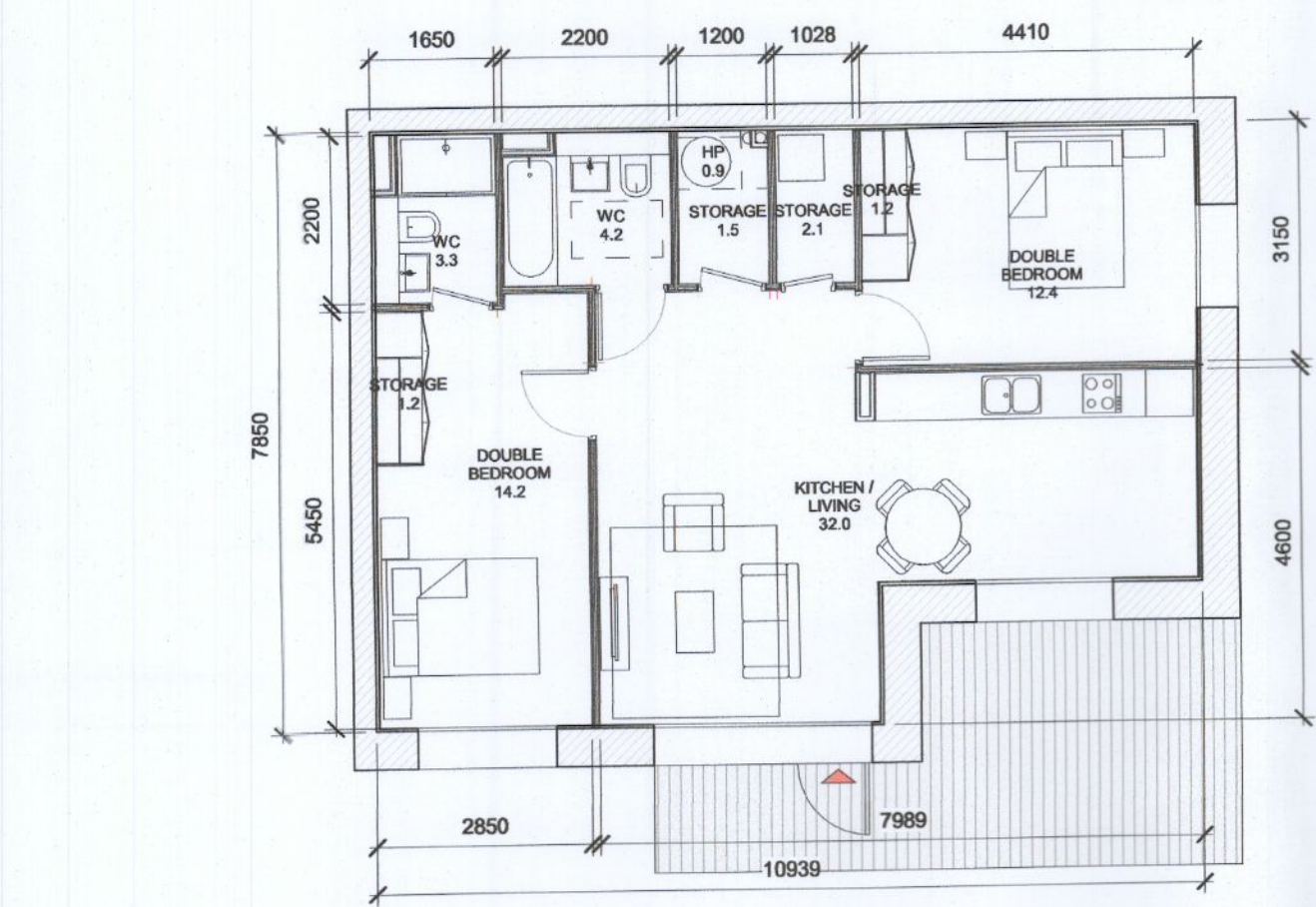
T.214_D SPACE REQUIREMENTS														
Apartment Area	Required Apartment Area	Required Area Met	Kitchen - Living Area	Required Kitchen - Living Area	Required Area Met	Total Bedroom Area	Required Total Bedroom Area	Required Area Met	Total Storage Area	Required Total Storage Area	Required Area Met	Heat Pump Area	Required Heat Pump Area	Required Area Met
83.3 m²	73.0 m²	Yes	38.0 m²	30.0 m²	Yes	27.1 m²	24.4 m²	Yes	6.5 m²	6.0 m²	Yes	0.9 m²	0.9 m²	Yes

NEW TYPE AS PER FSC COMPLIANCE



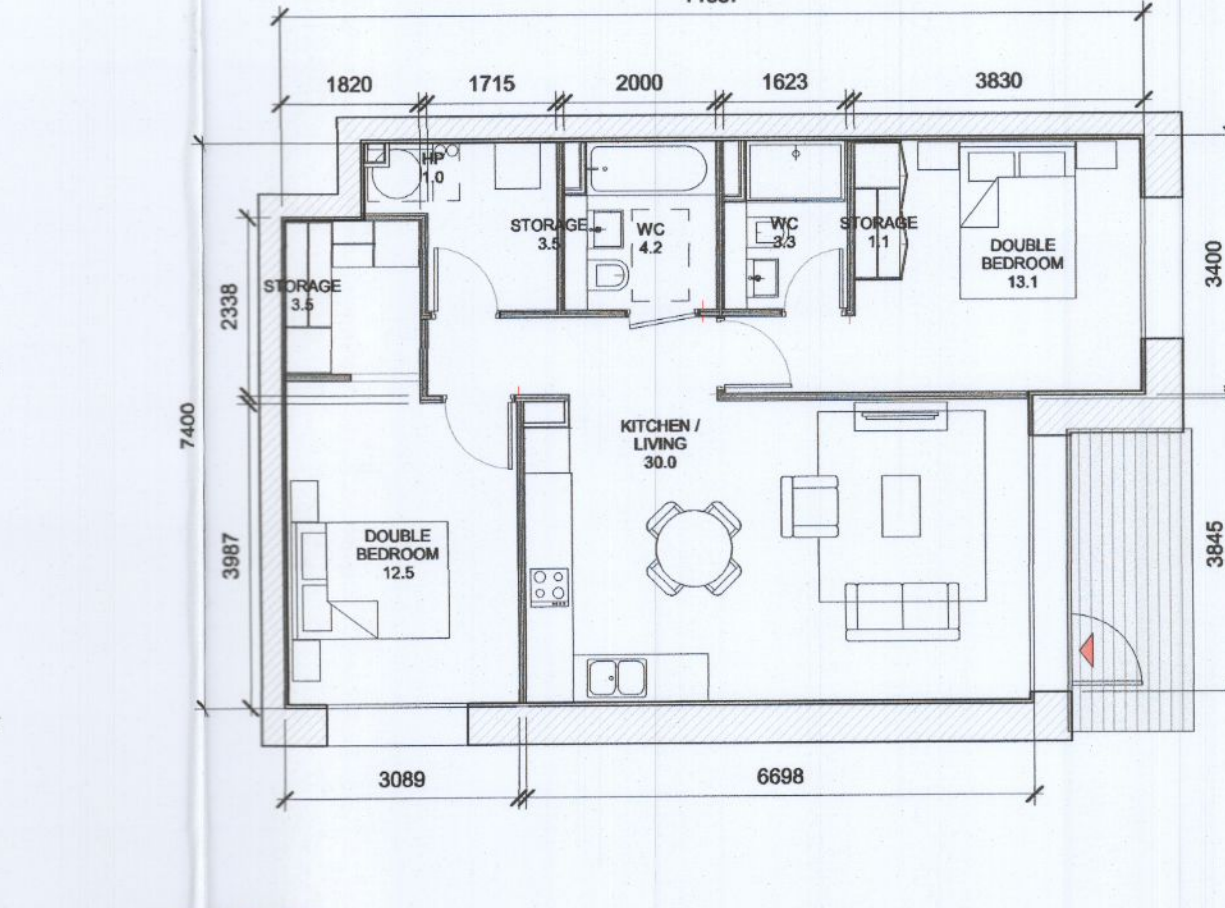
12 T.218 D
1:100

T.218_D SPACE REQUIREMENTS														
Apartment Area	Required Apartment Area	Required Area Met	Kitchen - Living Area	Required Kitchen - Living Area	Required Area Met	Total Bedroom Area	Required Total Bedroom Area	Required Area Met	Total Storage Area	Required Total Storage Area	Required Area Met	Heat Pump Area	Required Heat Pump Area	Required Area Met
82.4 m²	73.0 m²	Yes	40.0 m²	30.0 m²	Yes	25.0 m²	24.4 m²	Yes	6.0 m²	6.0 m²	Yes	0.9 m²	0.9 m²	Yes



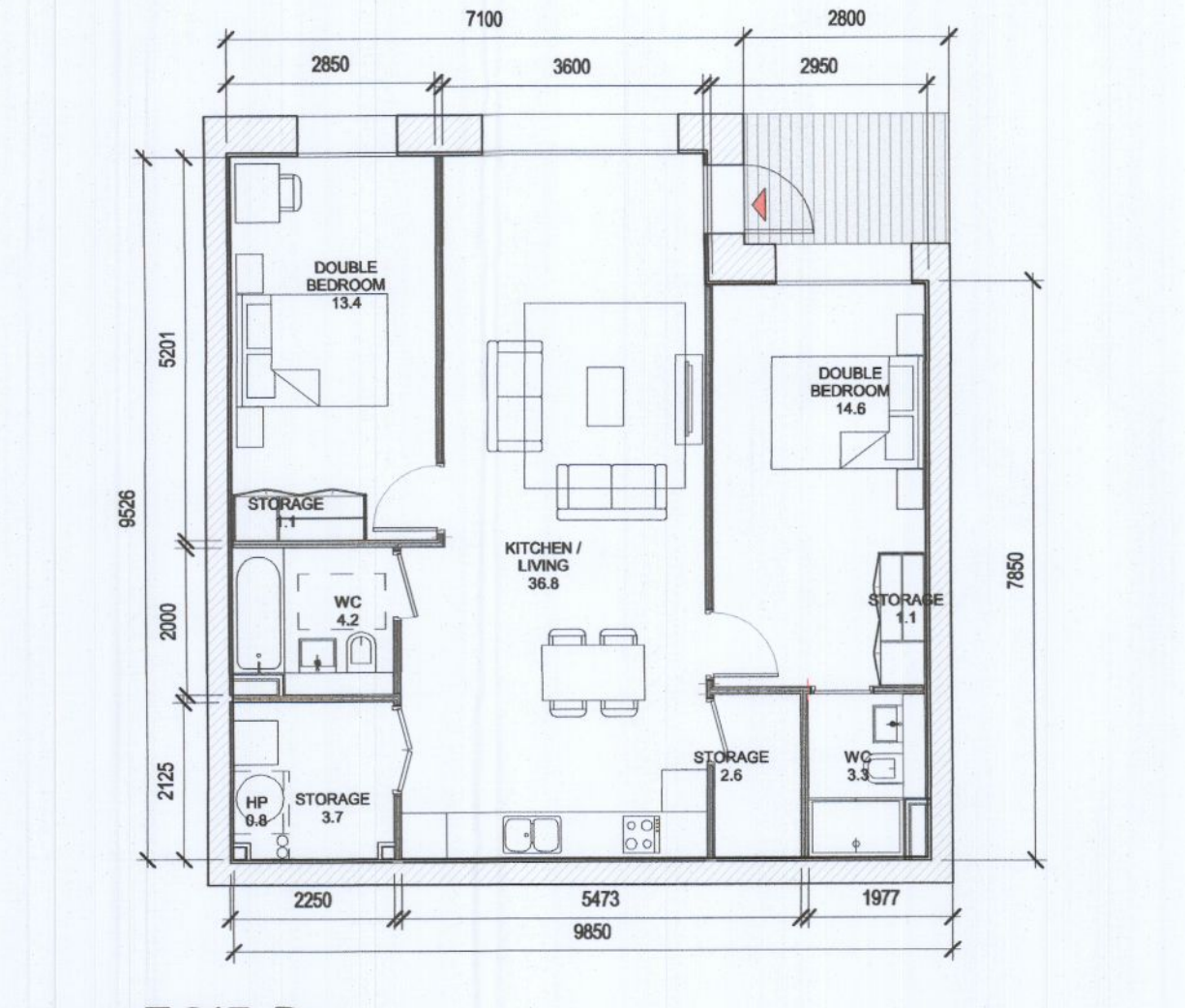
9 T.215 D
1:100

T.215_D SPACE REQUIREMENTS														
Apartment Area	Required Apartment Area	Required Area Met	Kitchen - Living Area	Required Kitchen - Living Area	Required Area Met	Total Bedroom Area	Required Total Bedroom Area	Required Area Met	Total Storage Area	Required Total Storage Area	Required Area Met	Heat Pump Area	Required Heat Pump Area	Required Area Met
78.3 m²	73.0 m²	Yes	32.0 m²	30.0 m²	Yes	26.6 m²	24.4 m²	Yes	6.0 m²	6.0 m²	Yes	0.9 m²	0.9 m²	Yes



10 T.216 D
1:100

T.216_D SPACE REQUIREMENTS														
Apartment Area	Required Apartment Area	Required Area Met	Kitchen - Living Area	Required Kitchen - Living Area	Required Area Met	Total Bedroom Area	Required Total Bedroom Area	Required Area Met	Total Storage Area	Required Total Storage Area	Required Area Met	Heat Pump Area	Required Heat Pump Area	Required Area Met
75.7 m²	73.0 m²	Yes	30.0 m²	30.0 m²	Yes	25.6 m²	24.4 m²	Yes	8.1 m²	6.0 m²	Yes	1.1 m²	1.1 m²	Yes



11 T.217 D
1:100

T.217_D SPACE REQUIREMENTS														
Apartment Area	Required Apartment Area	Required Area Met	Kitchen - Living Area	Required Kitchen - Living Area	Required Area Met	Total Bedroom Area	Required Total Bedroom Area	Required Area Met	Total Storage Area	Required Total Storage Area	Required Area Met	Heat Pump Area	Required Heat Pump Area	Required Area Met
85.2 m²	73.0 m²	Yes	36.8 m²	30.0 m²	Yes	28.1 m²	24.4 m²	Yes	8.5 m²	6.0 m²	Yes	0.9 m²	0.9 m²	Yes