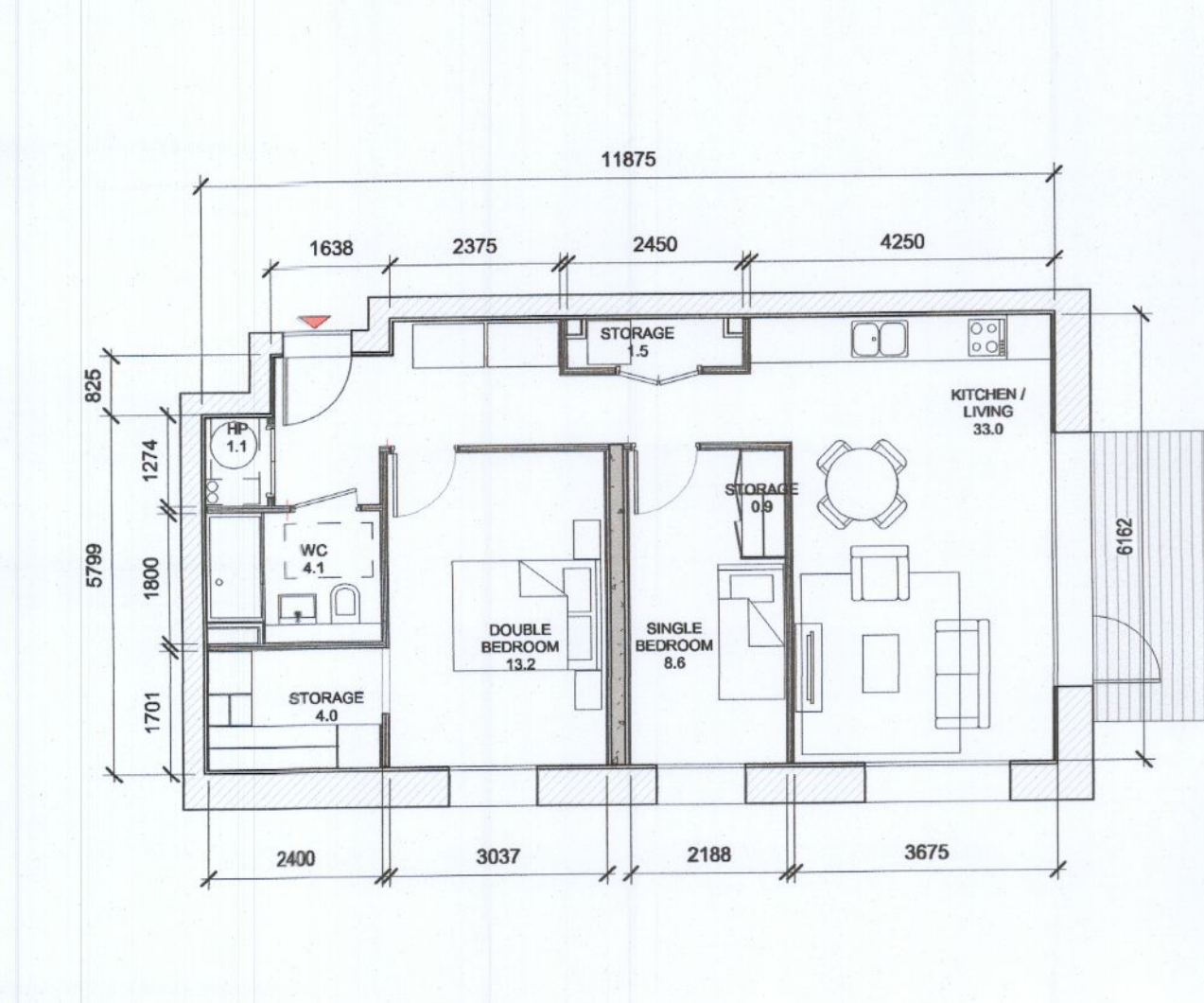


REVISED TYPE

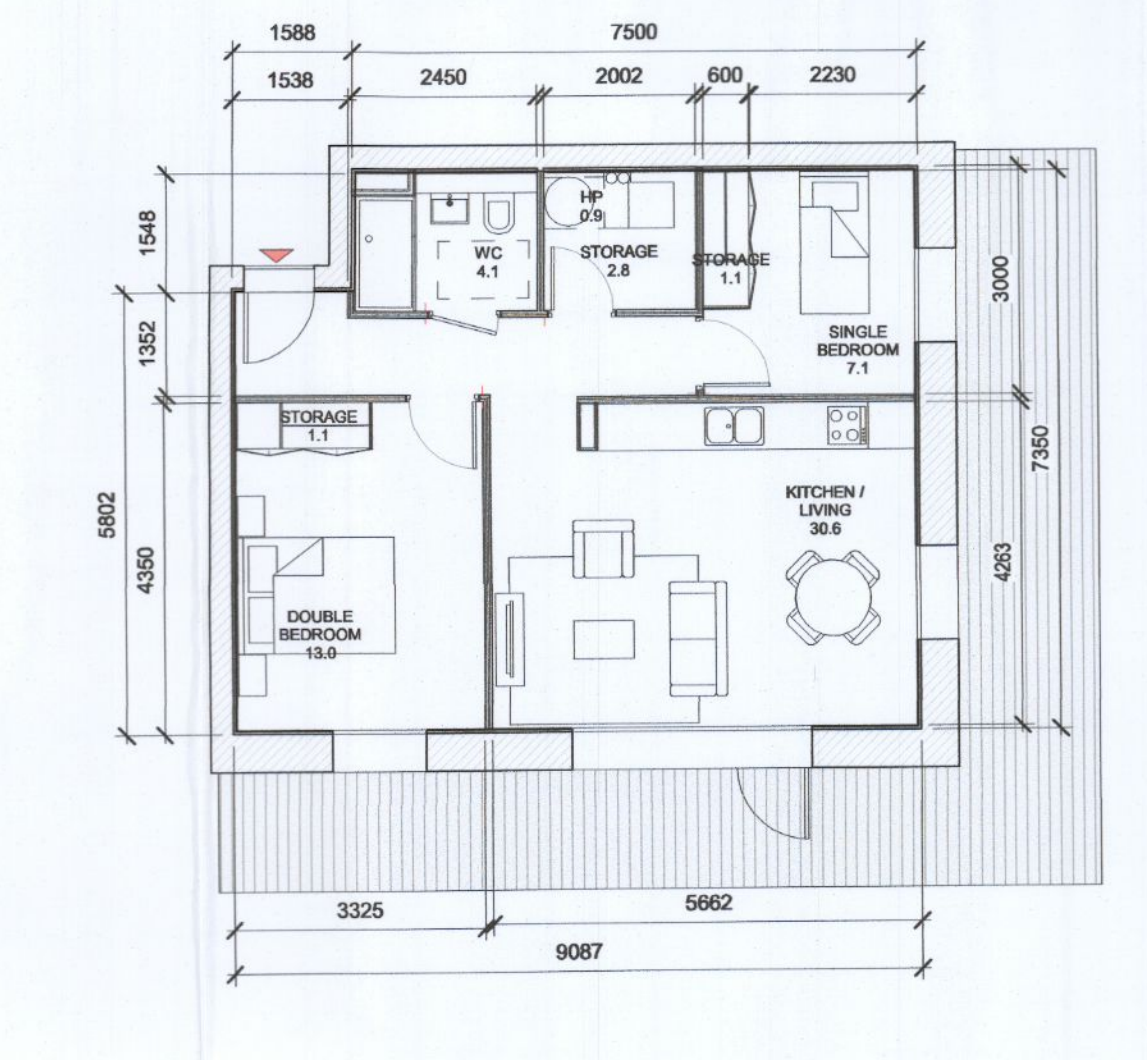
REVISED TYPE

ALL DIMENSIONS TO BE CHECKED ON SITE
NO DIMENSIONS TO BE SCALED FROM THIS DRAWING
DRAWING IS TO BE READ IN CONJUNCTION WITH RELEVANT CONSULTANTS DRAWINGS



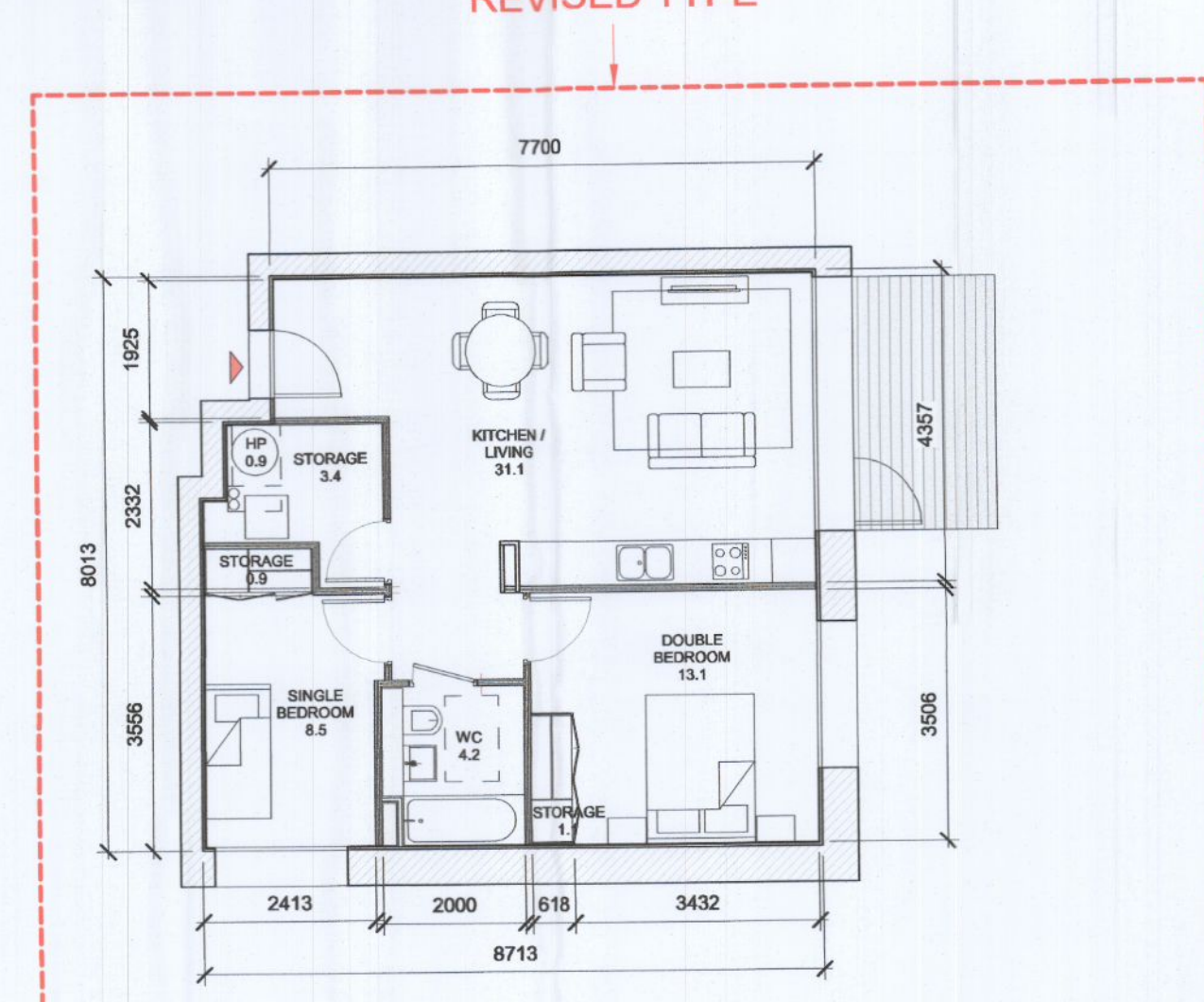
1 T.201_C
1:100

T.201_C SPACE REQUIREMENTS									
Apartment Area	Required Apartment Area	Required Area Met	Kitchen - Living Area	Required Kitchen - Living Area	Required Area Met	Total Bedroom Area	Required Total Bedroom Area	Required Area Met	Heat Pump Area
70.6 m ²	63.0 m ²	Yes	33.0 m ²	28.0 m ²	Yes	21.8 m ²	20.1 m ²	Yes	1.1 m ²



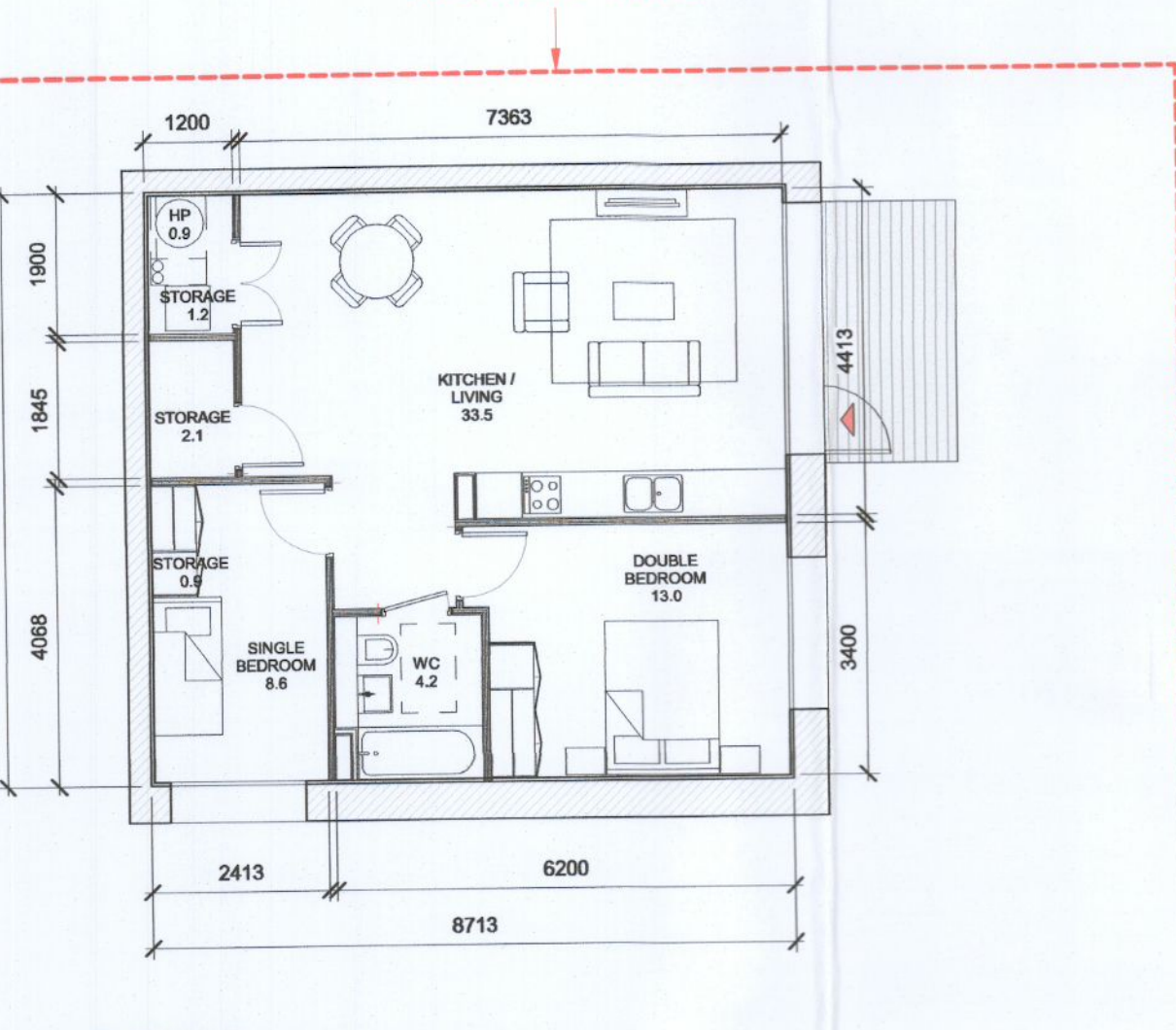
2 T.202_C
1:100

T.202_C SPACE REQUIREMENTS									
Apartment Area	Required Apartment Area	Required Area Met	Kitchen - Living Area	Required Kitchen - Living Area	Required Area Met	Total Bedroom Area	Required Total Bedroom Area	Required Area Met	Heat Pump Area
63.2 m ²	63.0 m ²	Yes	30.6 m ²	28.0 m ²	Yes	20.1 m ²	20.1 m ²	Yes	0.9 m ²



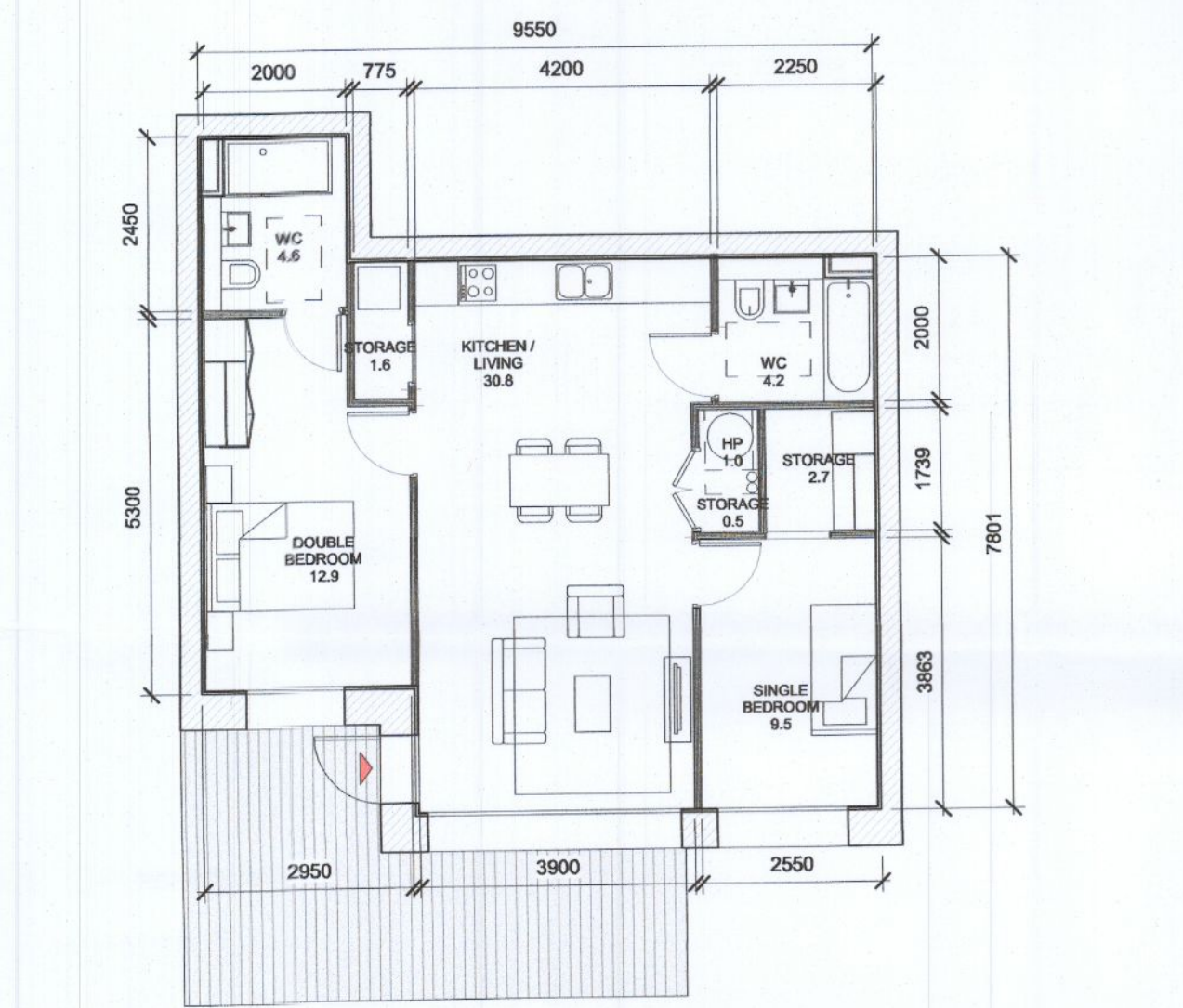
3 T.201_D
1:100

T.201_D SPACE REQUIREMENTS									
Apartment Area	Required Apartment Area	Required Area Met	Kitchen - Living Area	Required Kitchen - Living Area	Required Area Met	Total Bedroom Area	Required Total Bedroom Area	Required Area Met	Heat Pump Area
65.7 m ²	63.0 m ²	Yes	31.1 m ²	28.0 m ²	Yes	21.6 m ²	20.1 m ²	Yes	0.9 m ²



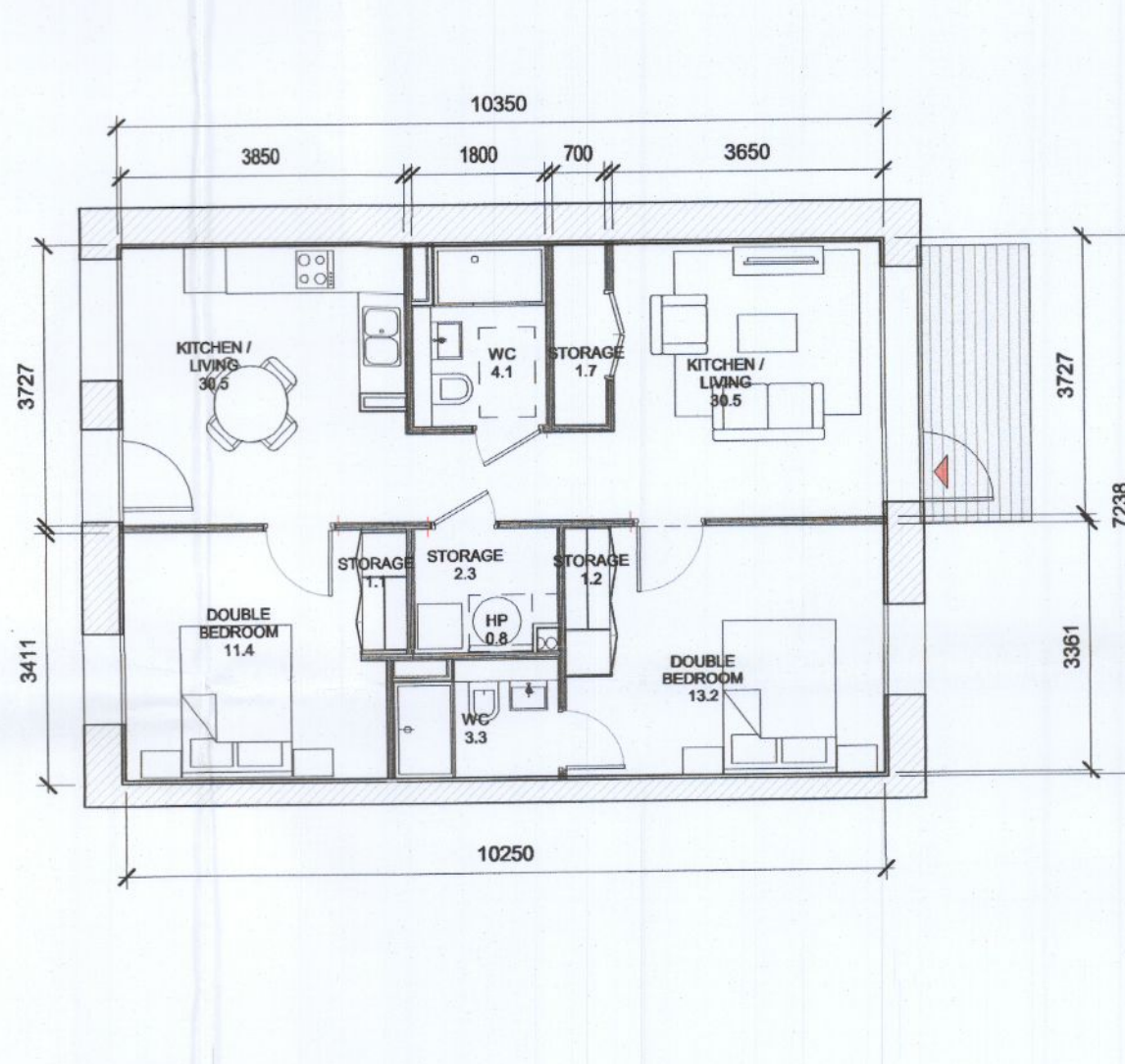
4 T.202_D
1:100

T.202_D SPACE REQUIREMENTS									
Apartment Area	Required Apartment Area	Required Area Met	Kitchen - Living Area	Required Kitchen - Living Area	Required Area Met	Total Bedroom Area	Required Total Bedroom Area	Required Area Met	Heat Pump Area
66.2 m ²	63.0 m ²	Yes	33.5 m ²	28.0 m ²	Yes	21.6 m ²	20.1 m ²	Yes	0.9 m ²



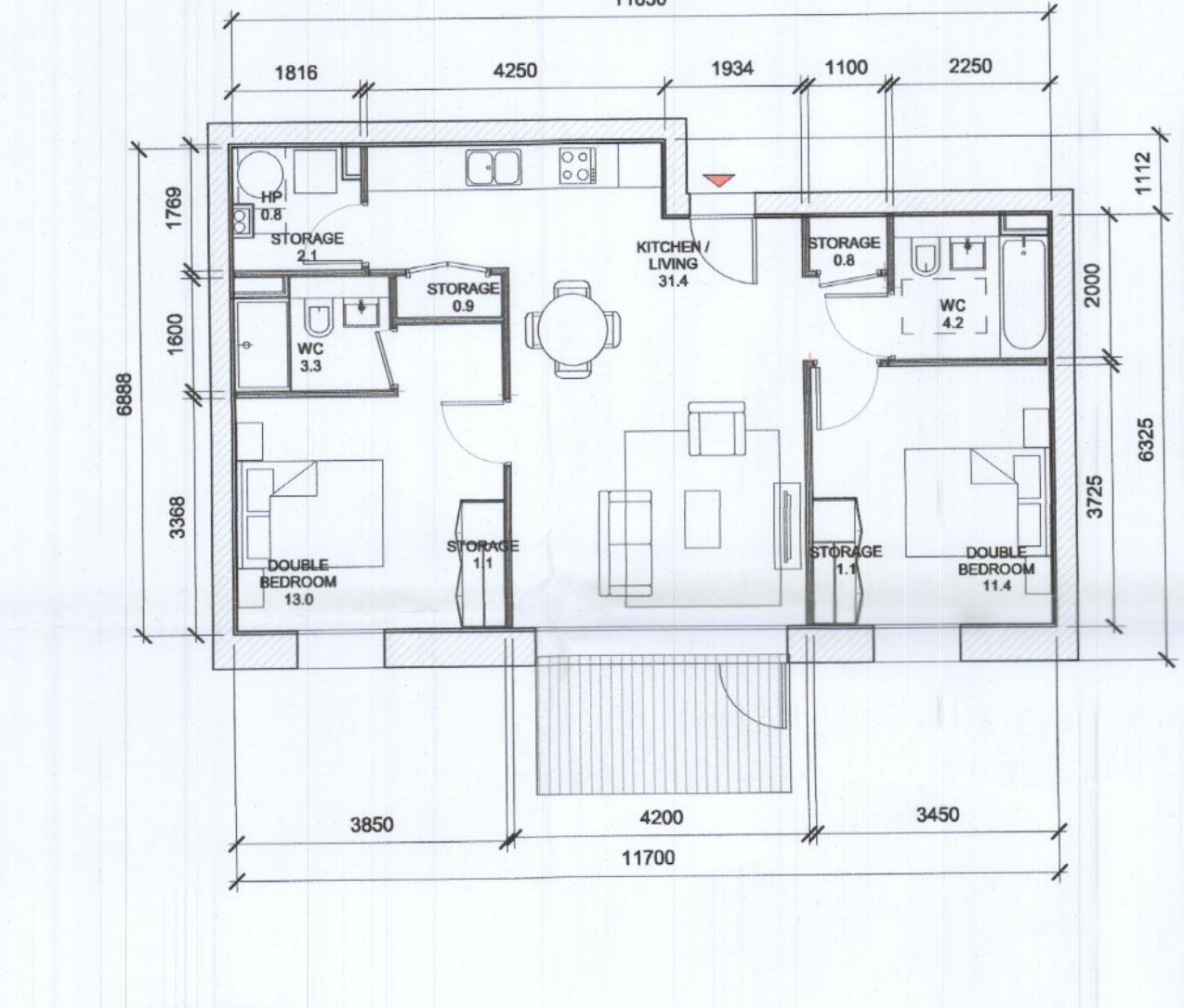
5 T.203_D
1:100

T.203_D SPACE REQUIREMENTS									
Apartment Area	Required Apartment Area	Required Area Met	Kitchen - Living Area	Required Kitchen - Living Area	Required Area Met	Total Bedroom Area	Required Total Bedroom Area	Required Area Met	Heat Pump Area
71.9 m ²	63.0 m ²	Yes	30.8 m ²	28.0 m ²	Yes	22.5 m ²	20.1 m ²	Yes	1.0 m ²



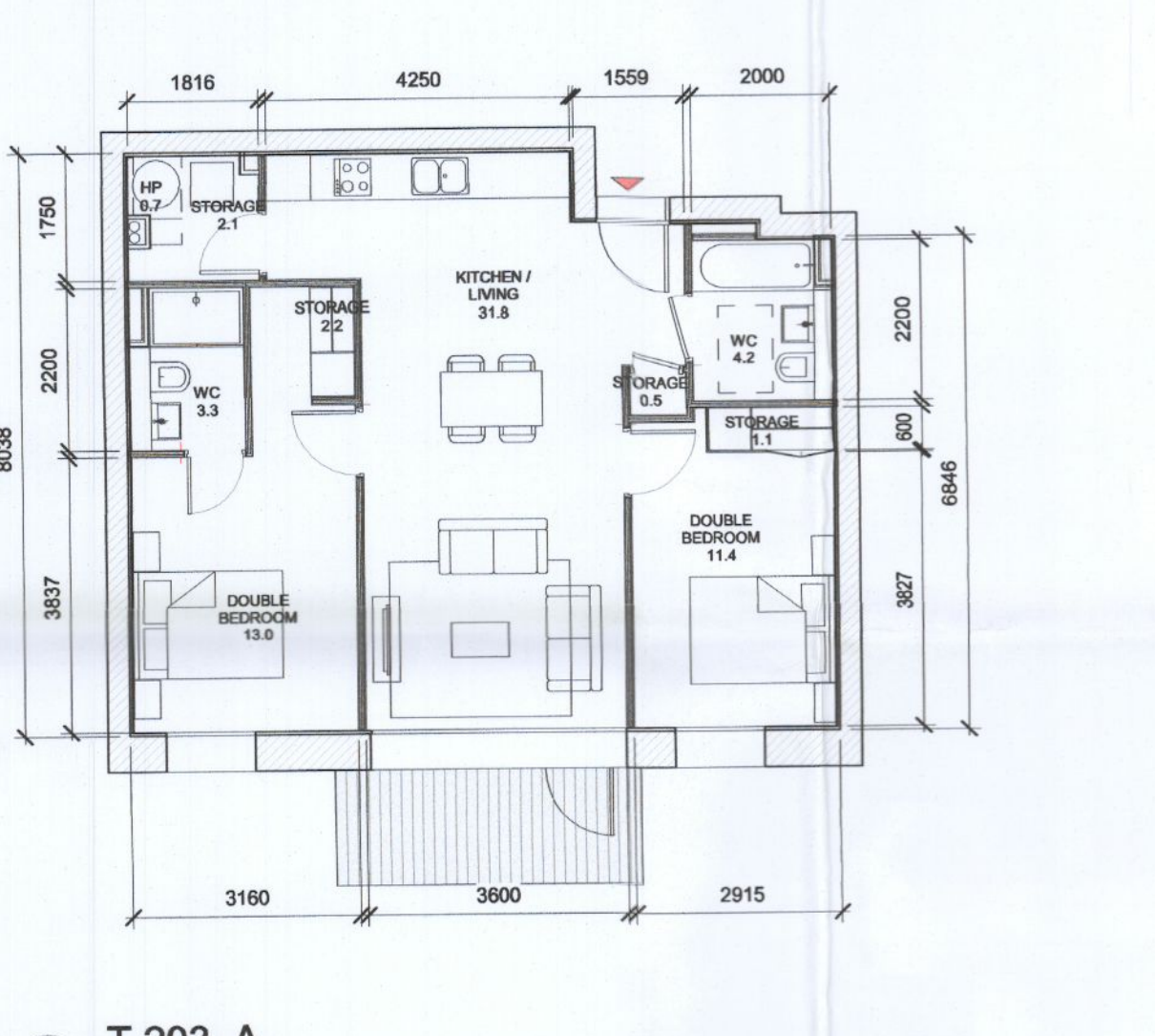
6 T.201_A
1:100

T.201_A SPACE REQUIREMENTS									
Apartment Area	Required Apartment Area	Required Area Met	Kitchen - Living Area	Required Kitchen - Living Area	Required Area Met	Total Bedroom Area	Required Total Bedroom Area	Required Area Met	Heat Pump Area
73.2 m ²	73.0 m ²	Yes	30.7 m ²	30.0 m ²	Yes	24.6 m ²	24.4 m ²	Yes	0.9 m ²



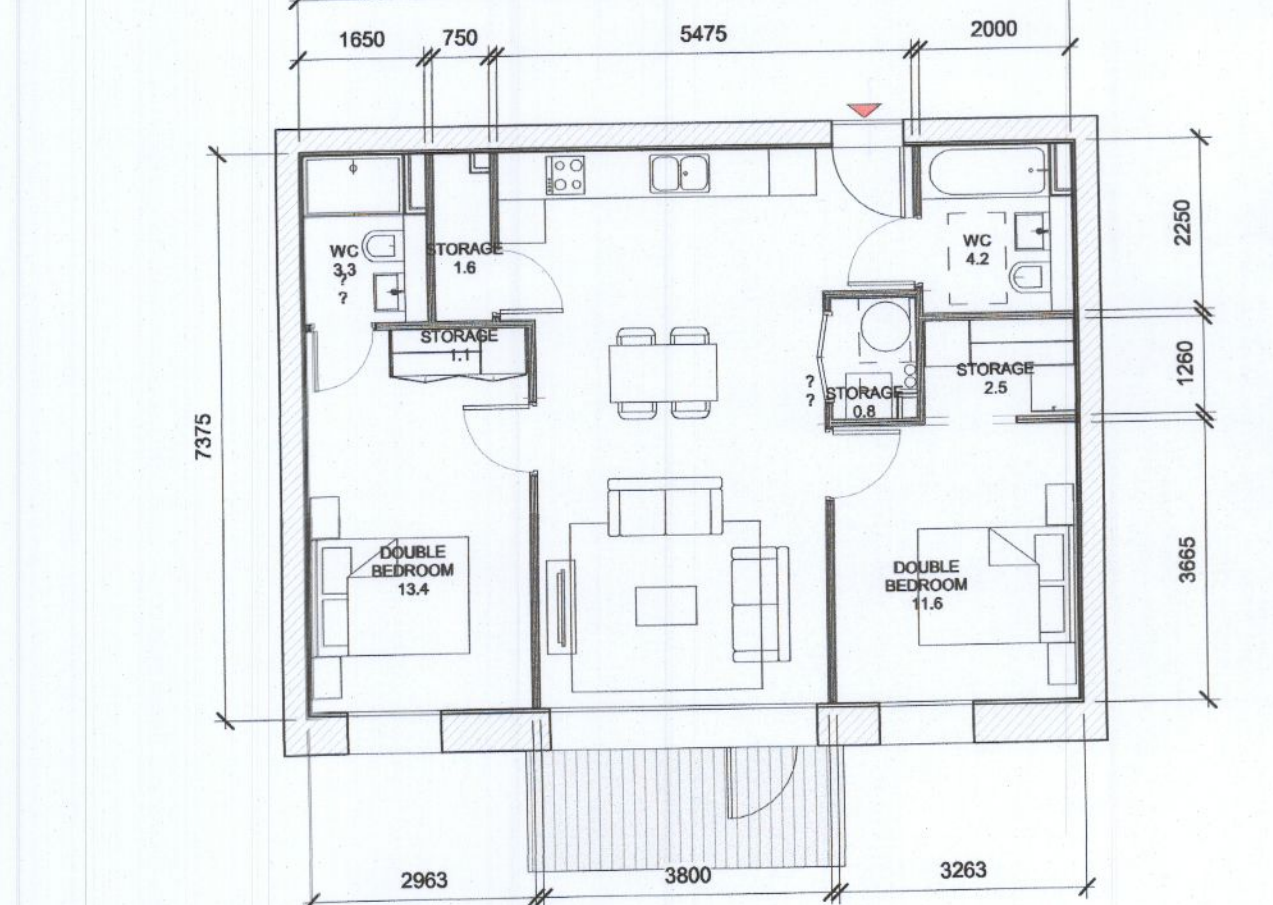
7 T.202_A
1:100

T.202_A SPACE REQUIREMENTS									
Apartment Area	Required Apartment Area	Required Area Met	Kitchen - Living Area	Required Kitchen - Living Area	Required Area Met	Total Bedroom Area	Required Total Bedroom Area	Required Area Met	Heat Pump Area
74.0 m ²	73.0 m ²	Yes	31.4 m ²	30.0 m ²	Yes	24.4 m ²	24.4 m ²	Yes	0.9 m ²



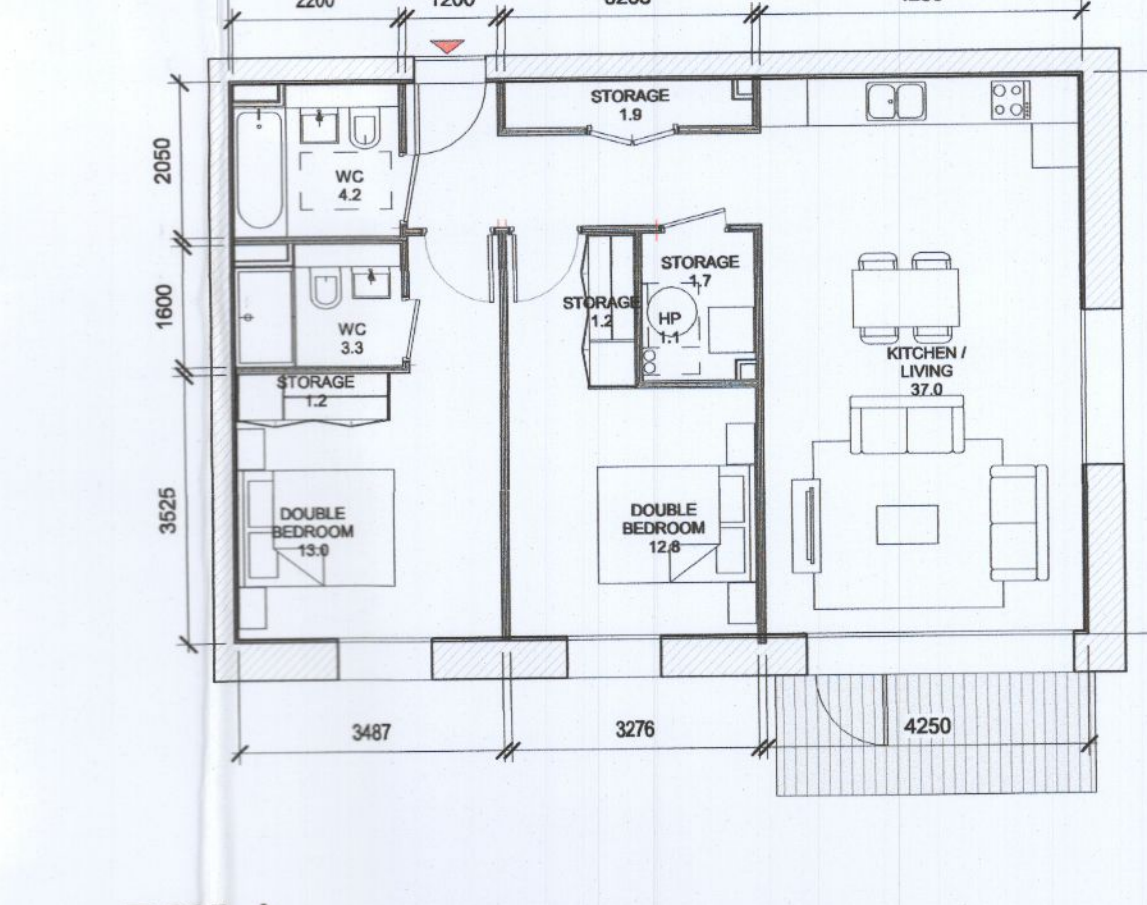
8 T.203_A
1:100

T.203_A SPACE REQUIREMENTS									
Apartment Area	Required Apartment Area	Required Area Met	Kitchen - Living Area	Required Kitchen - Living Area	Required Area Met	Total Bedroom Area	Required Total Bedroom Area	Required Area Met	Heat Pump Area
73.8 m ²	73.0 m ²	Yes	31.8 m ²	30.0 m ²	Yes	24.4 m ²	24.4 m ²	Yes	0.9 m ²



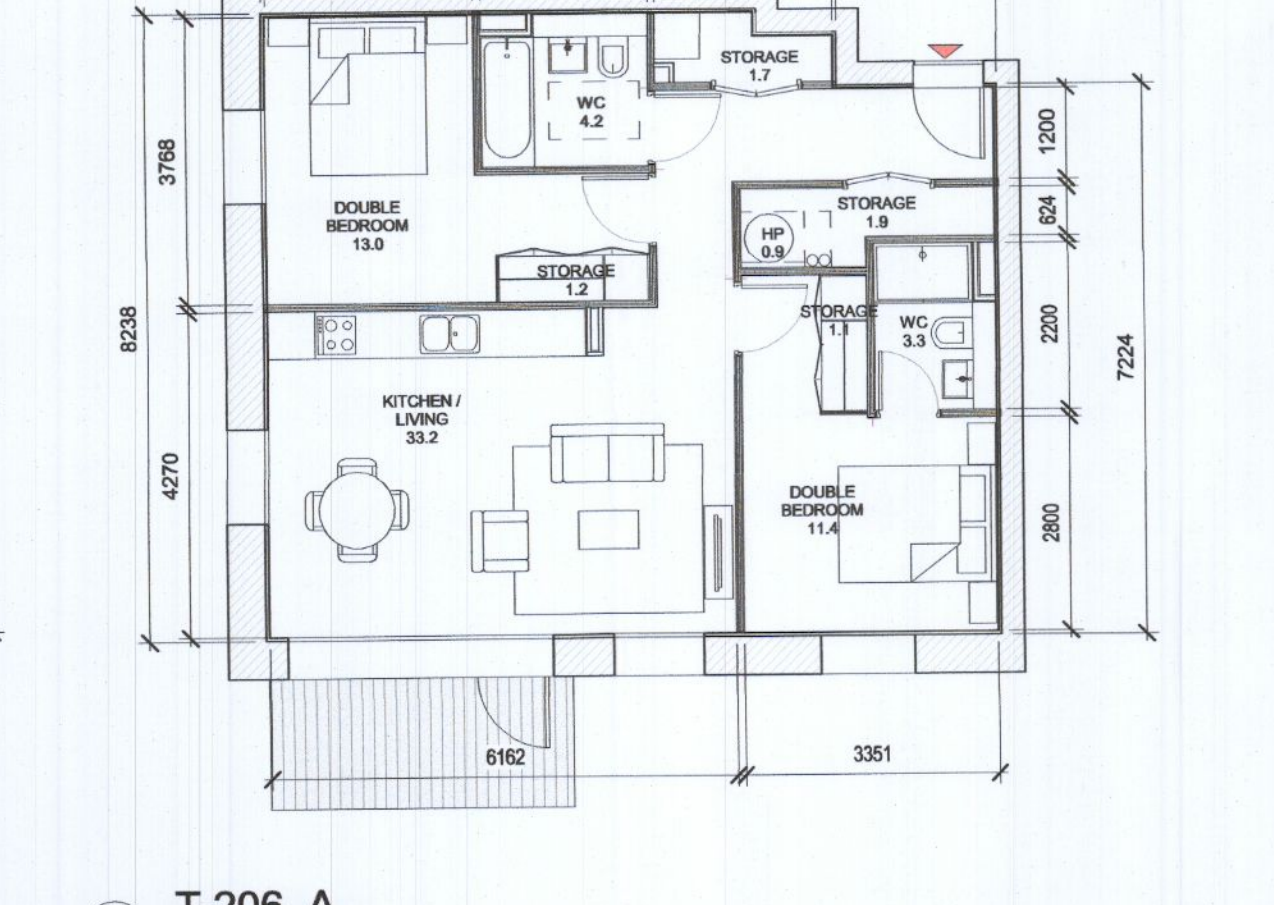
9 T.204_A
1:100

T.204_A SPACE REQUIREMENTS									
Apartment Area	Required Apartment Area	Required Area Met	Kitchen - Living Area	Required Kitchen - Living Area	Required Area Met	Total Bedroom Area	Required Total Bedroom Area	Required Area Met	Heat Pump Area
73.7 m ²	73.0 m ²	Yes	30.9 m ²	30.0 m ²	Yes	25.0 m ²	24.4 m ²	Yes	0.9 m ²



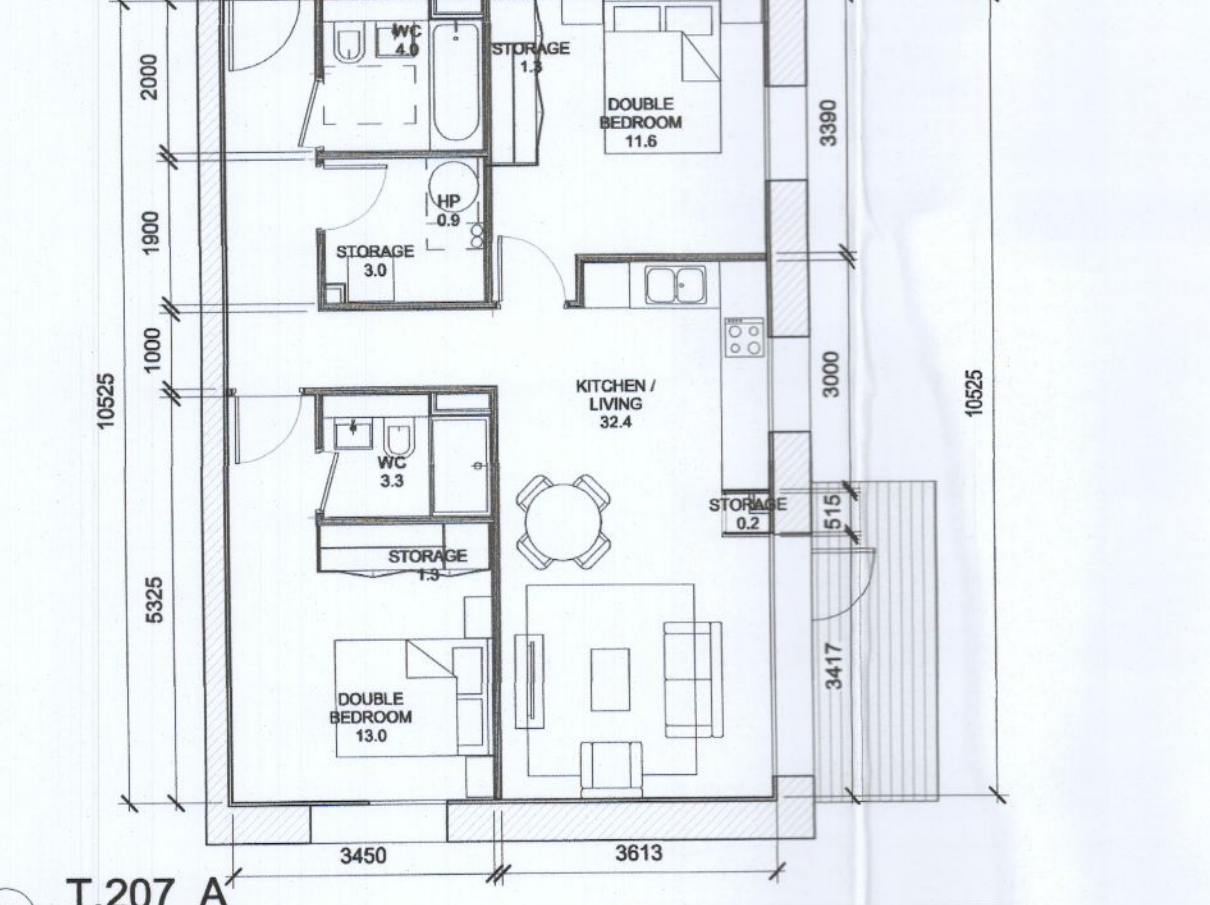
10 T.205_A
1:100

T.205_A SPACE REQUIREMENTS									
Apartment Area	Required Apartment Area	Required Area Met	Kitchen - Living Area	Required Kitchen - Living Area	Required Area Met	Total Bedroom Area	Required Total Bedroom Area	Required Area Met	Heat Pump Area
81.2 m ²	73.0 m ²	Yes	37.0 m ²	30.0 m ²	Yes	25.8 m ²	24.4 m ²	Yes	0.9 m ²



11 T.206_A
1:100

T.206_A SPACE REQUIREMENTS									
Apartment Area	Required Apartment Area	Required Area Met	Kitchen - Living Area	Required Kitchen - Living Area	Required Area Met	Total Bedroom Area	Required Total Bedroom Area	Required Area Met	Heat Pump Area
75.9 m ²	73.0 m ²	Yes	33.2 m ²	30.0 m ²	Yes	24.4 m ²	24.4 m ²	Yes	0.9 m ²



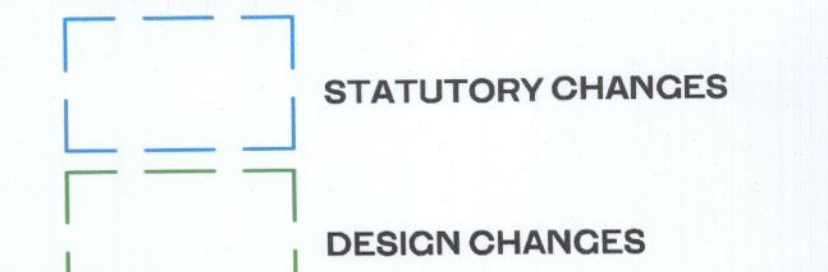
12 T.207_A
1:100

T.207_A SPACE REQUIREMENTS									
Apartment Area	Required Apartment Area	Required Area Met	Kitchen - Living Area	Required Kitchen - Living Area	Required Area Met	Total Bedroom Area	Required Total Bedroom Area	Required Area Met	Heat Pump Area
74.8 m ²	73.0 m ²	Yes	32.4 m ²	30.0 m ²	Yes	24.6 m ²	24.4 m ²	Yes	0.9 m ²

APARTMENT TYPES 2B					
Count	Unit Type	Type Name	Block	Area sqm	Min. Area
4	2B-3P	T.201_C	C	70.6	63.0
8	2B-3P	T.201_D	D	65.7	63.0
1	2B-3P	T.202_C	C	63.2	63.0
2	2B-3P	T.202_D	D	66.2	63.0
1	2B-3P	T.203_D	D	71.9	63.0

2B-3P: 16					
Count	Unit Type	Type Name	Block	Area sqm	Min. Area
2	2B-4P	T.201_A	A	73.2	73.0
4	2B-4P	T.202_A	A	74.0	73.0
4	2B-4P	T.203_A	A	73.8	73.0
13	2B-4P	T.203_C	C	75.8	73.0
8	2B-4P	T.204_A	A	73.7	73.0
16	2B-4P	T.204_C	C	73.6	73.0
16	2B-4P	T.204_D	D	73.6	73.0
8	2B-4P	T.204_E	E	74.3	73.0
8	2B-4P	T.205_A	A	81.2	73.0
4	2B-4P	T.205_C	C	75.4	73.0
4	2B-4P	T.205_D	D	76.7	73.0
27	2B-4P	T.206_A	A	75.9	73.0
1	2B-4P	T.206_C	C	73.3	73.0
6	2B-4P	T.206_D	D	80.7	73.0
8	2B-4P	T.207_A	A	74.9	73.0
16	2B-4P	T.207_C	C	73.3	73.0
1	2B-4P	T.207_D	D	81.6	73.0
2	2B-4P	T.208_A	A	77.2	73.0
16	2B-4P	T.208_C	C	73.6	73.0
4	2B-4P	T.209_A	A	80.3	73.0
4	2B-4P	T.209_D	D	73.4	73.0
2	2B-4P	T.210_A	A	82.8	73.0
3	2B-4P	T.210_D	D	78.0	73.0
1	2B-4P	T.211_D	D	81.5	73.0
3	2B-4P	T.211_D	D	78.8	73.0
3	2B-4P	T.212_D	D	78.9	73.0
3	2B-4P	T.213_D	D	74.0	73.0
2	2B-4P	T.214_D	D	83.3	73.0
1	2B-4P	T.215_D	D	76.3	73.0
1	2B-4P	T.216_D	D	75.7	73.0
1	2B-4P	T.217_D	D	85.2	73.0
3	2B-4P	T.218_D	D	82.4	73.0

Grand total: 211



GENERAL NOTES:

01 ALL INTERNAL APARTMENT LAYOUTS HAVE BEEN AMENDED DUE TO DESIGN DEVELOPMENT AND CO-ORDINATION WITH OTHER DISCIPLINES. THE INDIVIDUAL UNITS MAINTAIN THE SPACE REQUIREMENT GUIDELINES AS PER THE ORIGINAL PLANNING SUBMISSION

02 MINOR AMENDMENTS TO M&E AND SE LAYOUTS DUE TO DESIGN DEVELOPMENT & TO ACCOMMODATE COMPLIANCE WITH STATUTORY REQUIREMENTS

03 REDUCED PARAPET HEIGHT & FALL ARREST SYSTEM INTRODUCED TO BLOCKS A,C,D AND RESIDENT PAVILLION BUILDINGS DUE TO MAINTENANCE. PARAPET HEIGHT OF TOWER ELEMENT OF BLOCK C1 RETAINED AS PER ORIGINAL PLANNING APPLICATION

PO2	06/09/2022	ISSUED FOR FURTHER INFORMATION	RJ	SEN
PO1	08/04/2022	ISSUED FOR PLANNING	RJ	FM
REV	DATE	DESCRIPTION	CKH	DRN

STATUS CODE DESCRIPTION

ISSUED FOR FURTHER INFORMATION

CLIENT

QUINTAIN IRELAND LTD.

PROJECT

ADAMSTOWN STATION BLOCKS ACD

DRAWING

**APARTMENT TYPES Sheet 3
2B Apartments**

PROJECT NUMBER: 950747 DATE: 08/04/22

SCALE@ A1: As indicated DRAWN/CHECKED: SEN/RJ

STATUS CODE: A1 ADC3-HJL-ACD-ZZ-DR-A-P8003 REVISION: P02

Henry J Lyons

Architecture + Interiors
henryjlyons.com +353 1 868 3333 info@henryjlyons.com 51-54 Pearse Street Dublin D02 KA66

HJL Drawing Number on previously lodged planning application: SDZ22A/0005
ADC3-HJL-ACD-ZZ-DR-A-P8003 Revision (PO1)

Red dash line indicates extent of amendments to address RFI 0723 dated 08 JUNE 2022