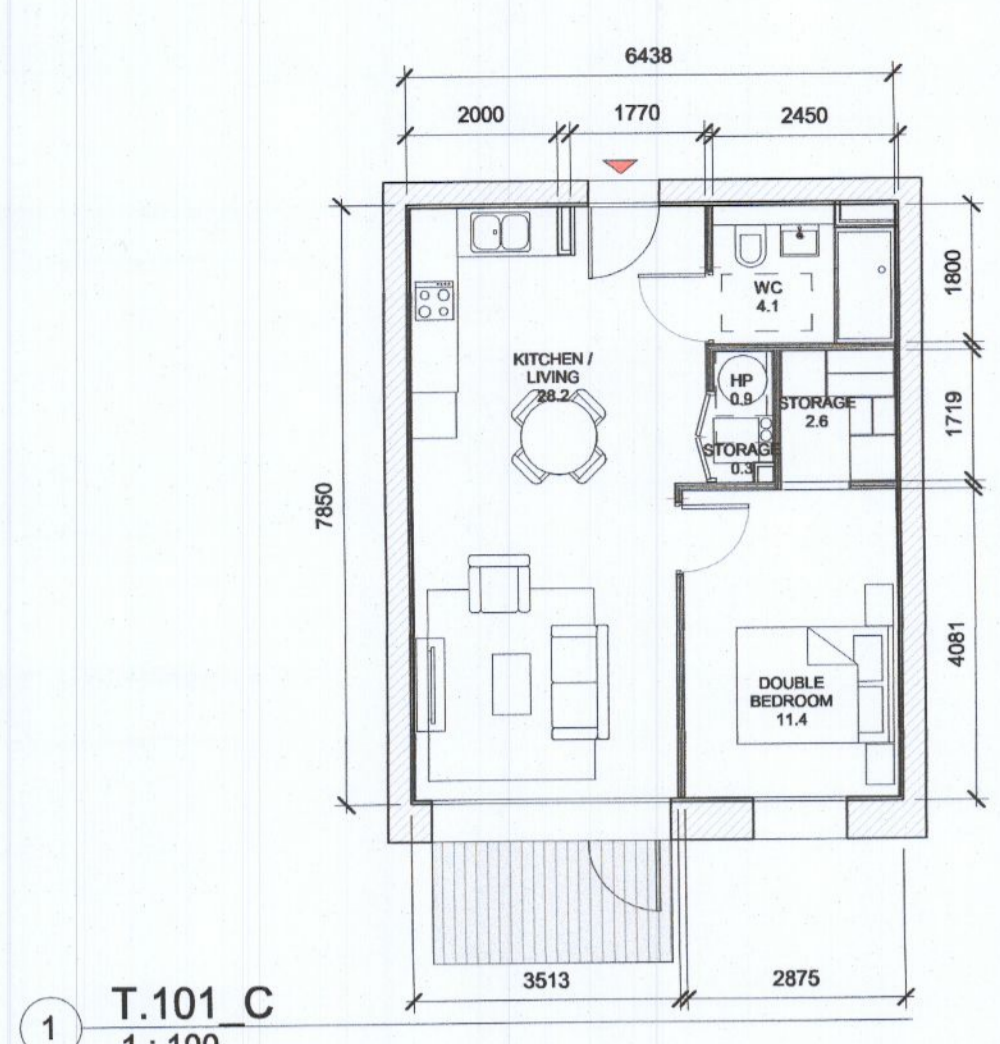
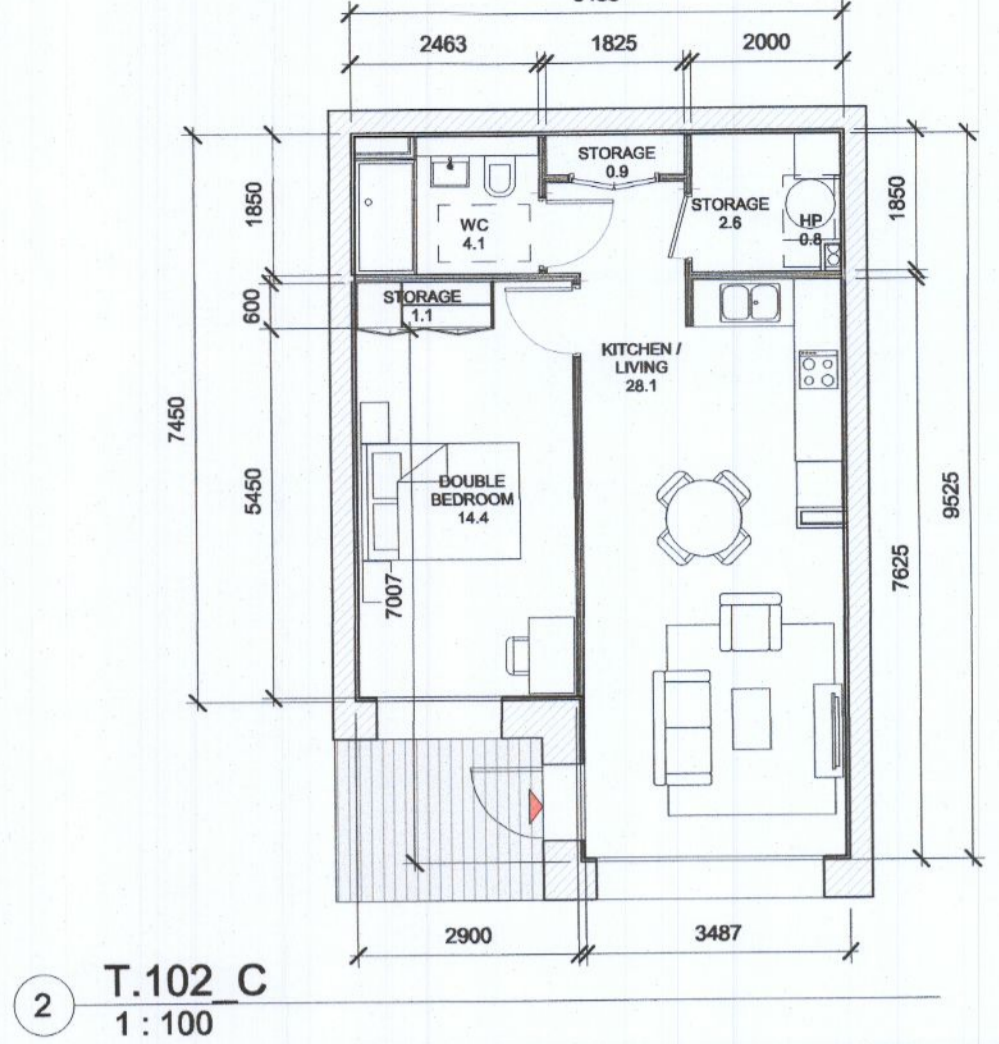


ALL DIMENSIONS TO BE CHECKED ON SITE
NO DIMENSIONS TO BE SCALED FROM THIS DRAWING
DRAWING IS TO BE READ IN CONJUNCTION WITH RELEVANT CONSULTANTS DRAWINGS



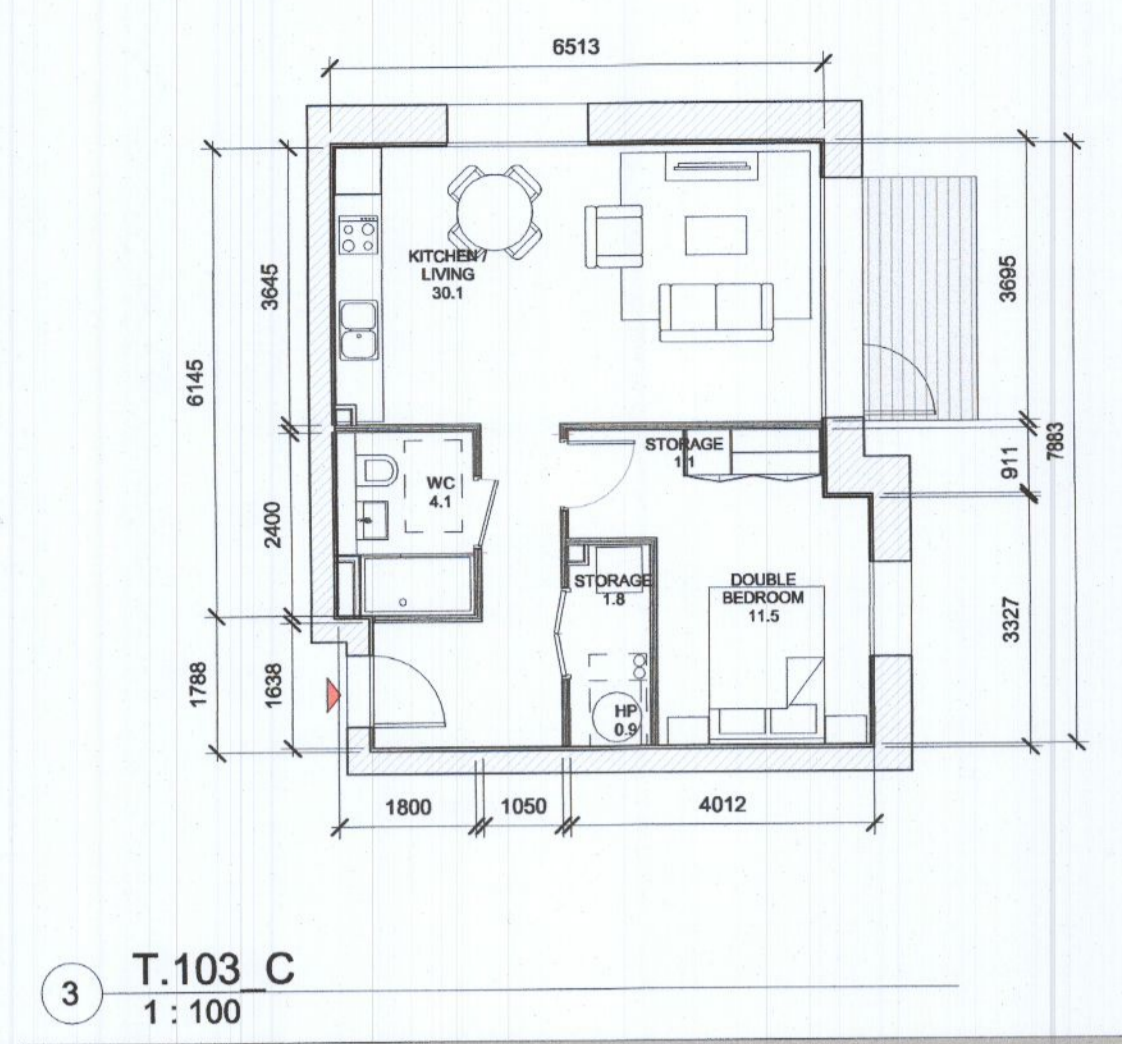
1 T.101 C 1:100

T.101_C SPACE REQUIREMENTS												
Apartment Area	Required Apartment Area	Required Area Met	Kitchen - Living Area	Required Kitchen - Living Area	Required Area Met	Total Bedroom Area	Required Total Bedroom Area	Required Area Met	Total Storage Area	Required Total Storage Area	Required Area Met	Heat Pump Area
49.5 m ²	45.0 m ²	Yes	28.2 m ²	23.0 m ²	Yes	11.4 m ²	11.4 m ²	Yes	3.0 m ²	3.0 m ²	Yes	0.9 m ²



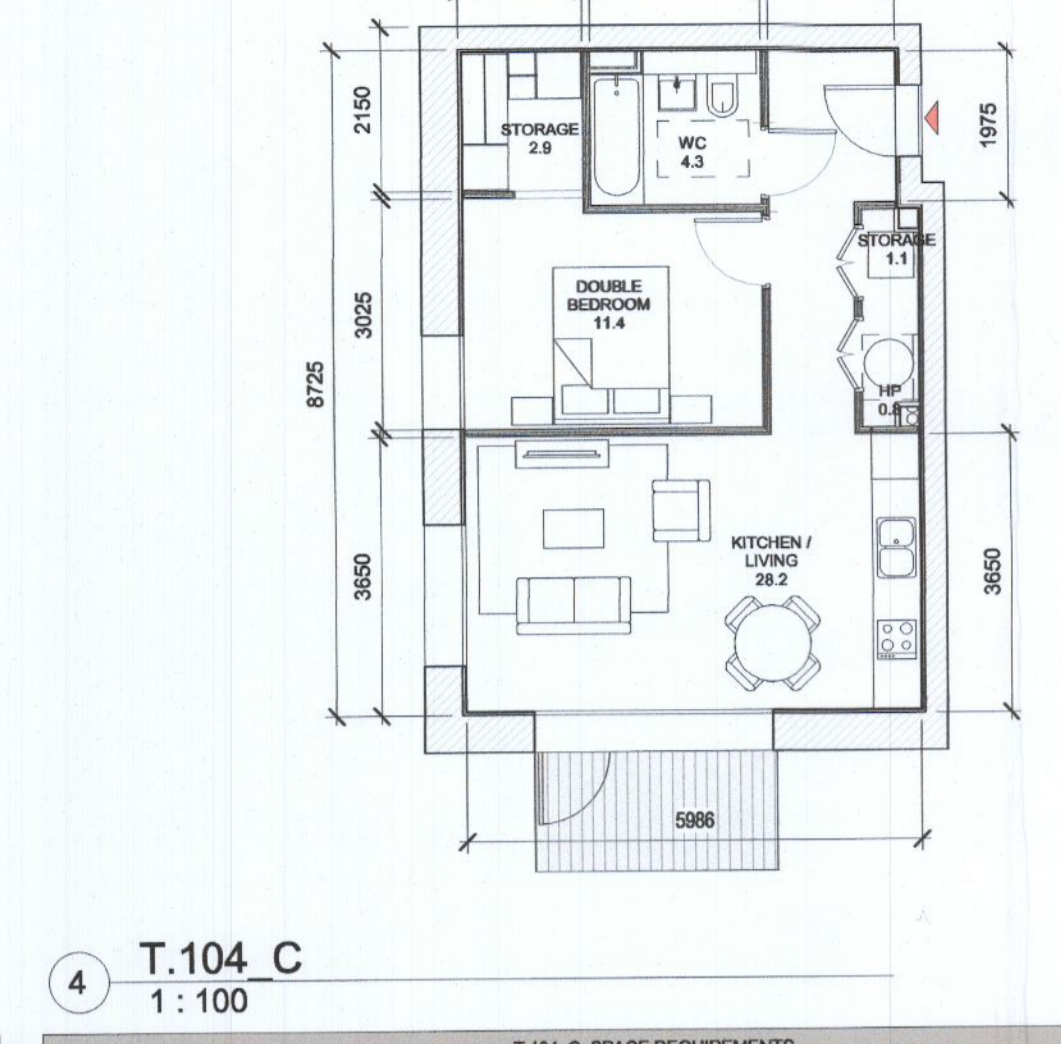
2 T.102 C 1:100

T.102_C SPACE REQUIREMENTS												
Apartment Area	Required Apartment Area	Required Area Met	Kitchen - Living Area	Required Kitchen - Living Area	Required Area Met	Total Bedroom Area	Required Total Bedroom Area	Required Area Met	Total Storage Area	Required Total Storage Area	Required Area Met	Heat Pump Area
54.3 m ²	45.0 m ²	Yes	28.1 m ²	23.0 m ²	Yes	14.3 m ²	11.4 m ²	Yes	4.6 m ²	3.0 m ²	Yes	0.9 m ²



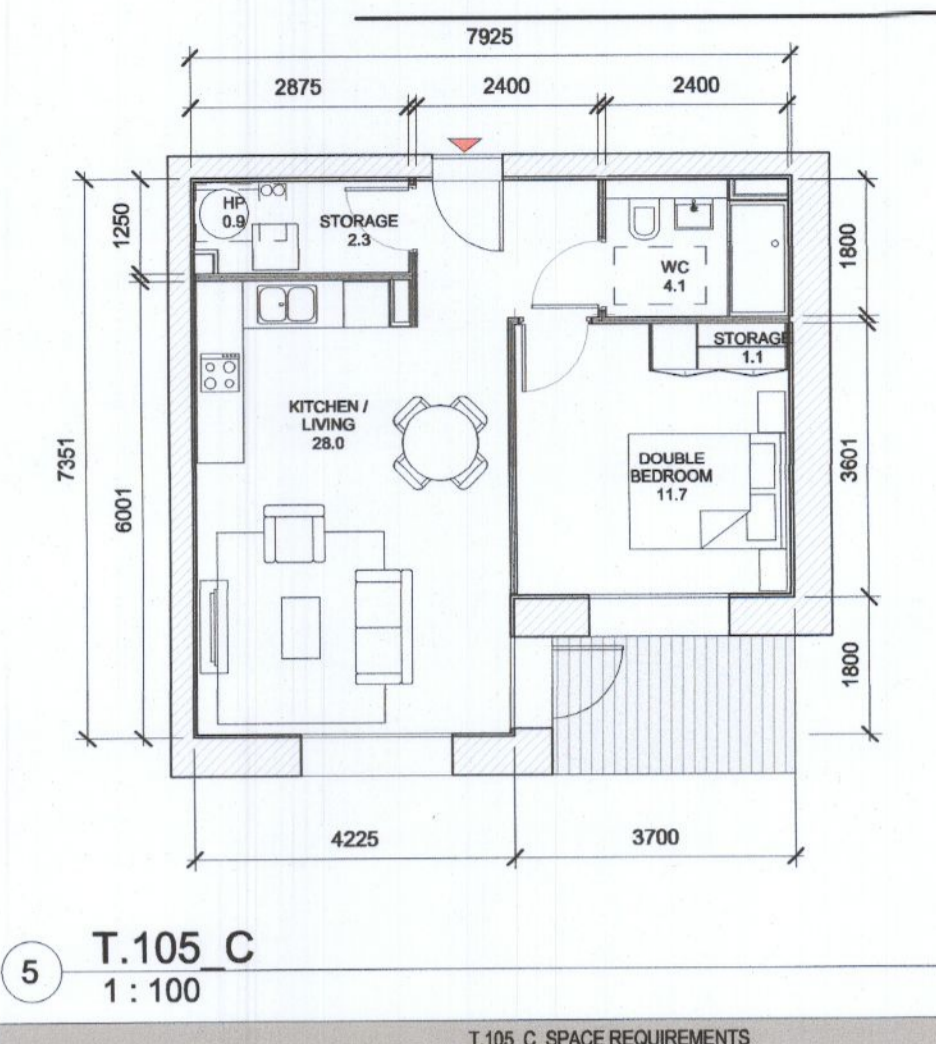
3 T.103 C 1:100

T.103_C SPACE REQUIREMENTS												
Apartment Area	Required Apartment Area	Required Area Met	Kitchen - Living Area	Required Kitchen - Living Area	Required Area Met	Total Bedroom Area	Required Total Bedroom Area	Required Area Met	Total Storage Area	Required Total Storage Area	Required Area Met	Heat Pump Area
49.7 m ²	45.0 m ²	Yes	30.2 m ²	23.0 m ²	Yes	11.5 m ²	11.4 m ²	Yes	3.0 m ²	3.0 m ²	Yes	0.9 m ²



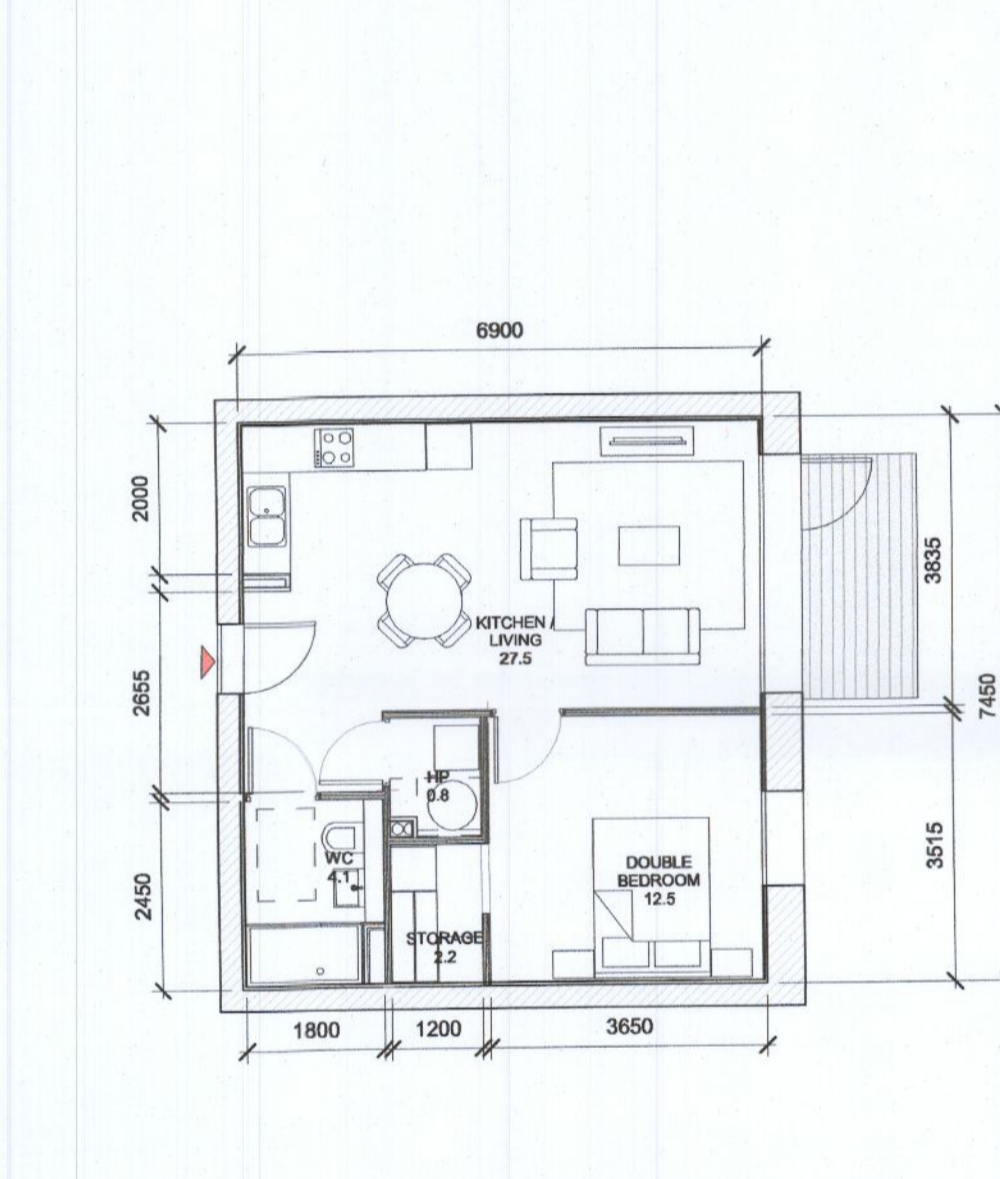
4 T.104 C 1:100

T.104_C SPACE REQUIREMENTS												
Apartment Area	Required Apartment Area	Required Area Met	Kitchen - Living Area	Required Kitchen - Living Area	Required Area Met	Total Bedroom Area	Required Total Bedroom Area	Required Area Met	Total Storage Area	Required Total Storage Area	Required Area Met	Heat Pump Area
51.0 m ²	45.0 m ²	Yes	28.2 m ²	23.0 m ²	Yes	11.4 m ²	11.4 m ²	Yes	4.6 m ²	3.0 m ²	Yes	0.9 m ²



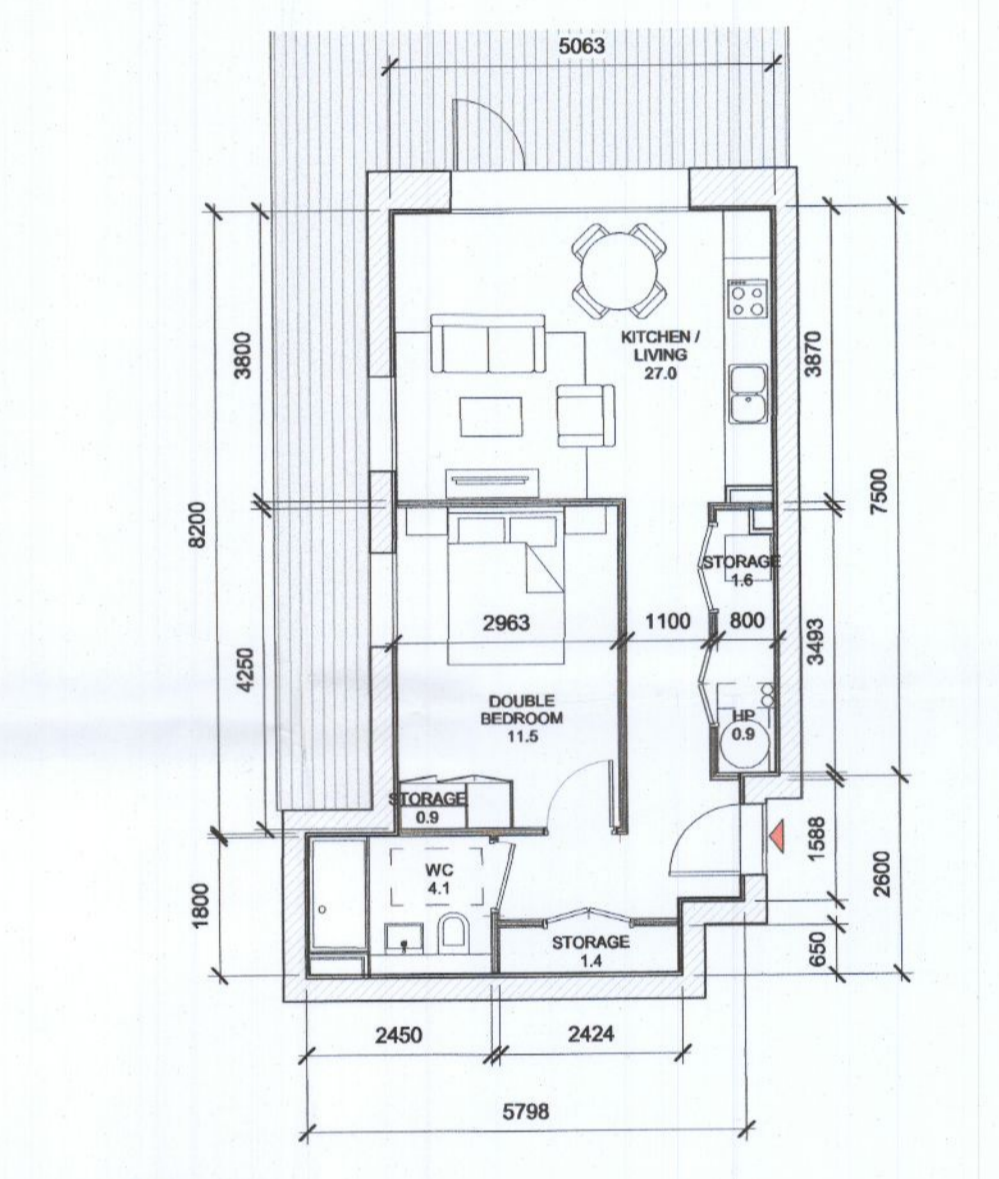
5 T.105 C 1:100

T.105_C SPACE REQUIREMENTS												
Apartment Area	Required Apartment Area	Required Area Met	Kitchen - Living Area	Required Kitchen - Living Area	Required Area Met	Total Bedroom Area	Required Total Bedroom Area	Required Area Met	Total Storage Area	Required Total Storage Area	Required Area Met	Heat Pump Area
50.1 m ²	45.0 m ²	Yes	28.0 m ²	23.0 m ²	Yes	11.7 m ²	11.4 m ²	Yes	3.6 m ²	3.0 m ²	Yes	0.9 m ²



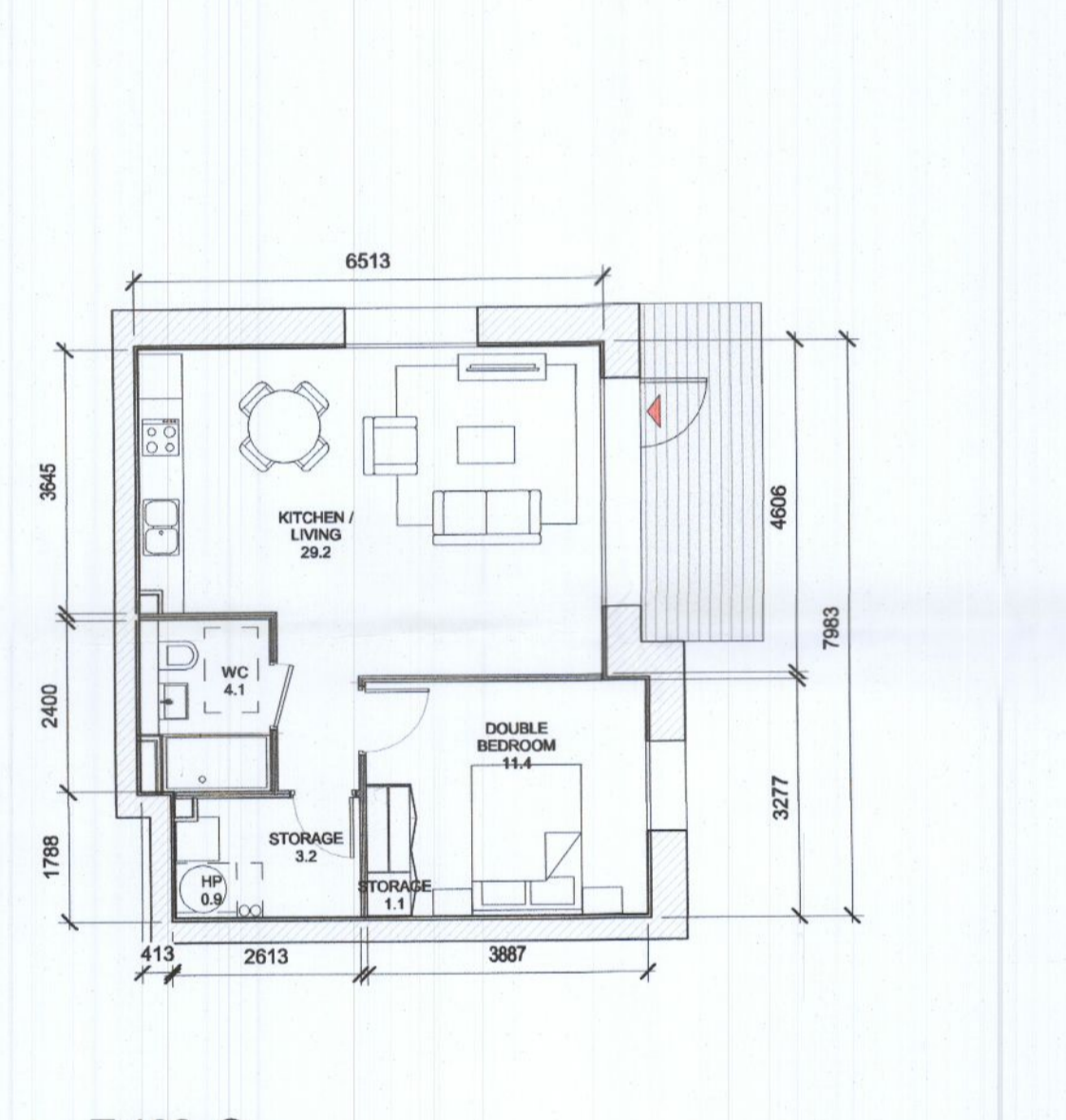
6 T.106 C 1:100

T.106_C SPACE REQUIREMENTS												
Apartment Area	Required Apartment Area	Required Area Met	Kitchen - Living Area	Required Kitchen - Living Area	Required Area Met	Total Bedroom Area	Required Total Bedroom Area	Required Area Met	Total Storage Area	Required Total Storage Area	Required Area Met	Heat Pump Area
50.0 m ²	45.0 m ²	Yes	27.5 m ²	23.0 m ²	Yes	12.5 m ²	11.4 m ²	Yes	3.2 m ²	3.0 m ²	Yes	1.0 m ²



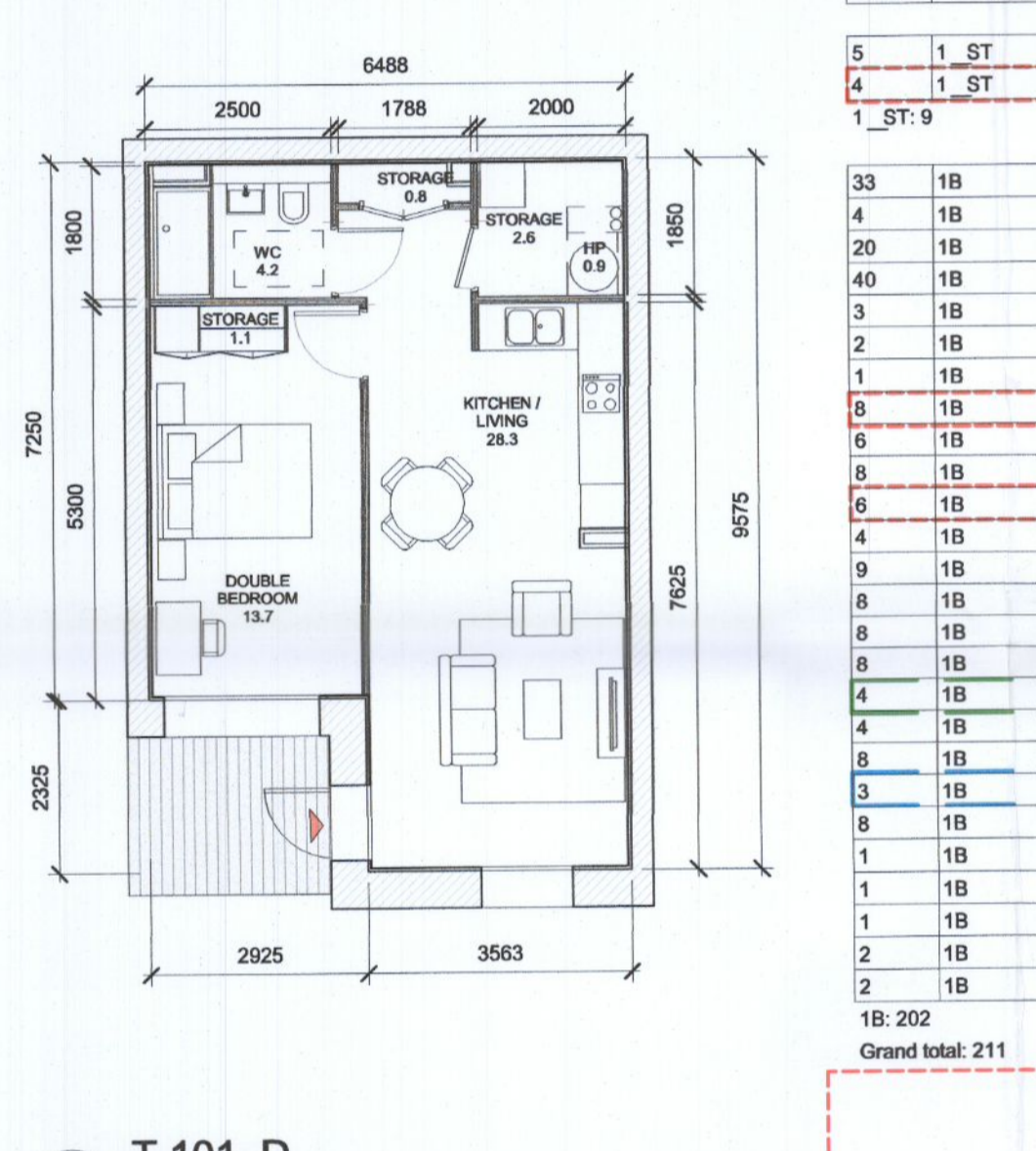
7 T.107 C 1:100

T.107_C SPACE REQUIREMENTS												
Apartment Area	Required Apartment Area	Required Area Met	Kitchen - Living Area	Required Kitchen - Living Area	Required Area Met	Total Bedroom Area	Required Total Bedroom Area	Required Area Met	Total Storage Area	Required Total Storage Area	Required Area Met	Heat Pump Area
50.0 m ²	45.0 m ²	Yes	27.0 m ²	23.0 m ²	Yes	11.5 m ²	11.4 m ²	Yes	4.0 m ²	3.0 m ²	Yes	0.9 m ²



8 T.108 C 1:100

T.108_C SPACE REQUIREMENTS												
Apartment Area	Required Apartment Area	Required Area Met	Kitchen - Living Area	Required Kitchen - Living Area	Required Area Met	Total Bedroom Area	Required Total Bedroom Area	Required Area Met	Total Storage Area	Required Total Storage Area	Required Area Met	Heat Pump Area
48.7 m ²	45.0 m ²	Yes	29.3 m ²	23.0 m ²	Yes	11.4 m ²	11.4 m ²	Yes	4.4 m ²	3.0 m ²	Yes	0.9 m ²



9 T.101 D 1:100

T.101_D SPACE REQUIREMENTS												
Apartment Area	Required Apartment Area	Required Area Met	Kitchen - Living Area	Required Kitchen - Living Area	Required Area Met	Total Bedroom Area	Required Total Bedroom Area	Required Area Met	Total Storage Area	Required Total Storage Area	Required Area Met	Heat Pump Area
53.7 m ²	45.0 m ²	Yes	28.3 m ²	23.0 m ²	Yes	13.7 m ²	11.4 m ²	Yes	4.7 m ²	3.0 m ²	Yes	0.9 m ²

APARTMENT TYPES 1B

Count	Unit Type	Type Name	Block	Area sqm	Min. Area
5	1 ST	T.001 D	D	39.8	37.0
4	1 ST	T.002 D	D	41.8	37.0
1	ST	9			

Count	Unit Type	Type Name	Block	Area sqm	Min. Area
33	1B	T.101 A	A	50.0	45.0
4	1B	T.101 A	C	50.0	45.0
20	1B	T.101 C	C	49.5	45.0
40	1B	T.101 C	D	49.5	45.0
3	1B	T.101 D	D	53.7	45.0
2	1B	T.102 A	A	50.0	45.0
1	1B	T.102 C	C	54.3	45.0
8	1B	T.102 D	D	50.7	45.0
6	1B	T.103 A	A	48.2	45.0
8	1B	T.103 C	C	49.7	45.0
6	1B	T.103 D	D	51.0	45.0
4	1B	T.104 A	A	50.0	45.0
9	1B	T.104 C	C	51.0	45.0
8	1B	T.104 D	D	49.5	45.0
8	1B	T.105 A	A	50.2	45.0
8	1B	T.105 C	C	50.1	45.0
4	1B	T.105 D	D	48.0	45.0
4	1B	T.106 A	A	48.4	45.0
8	1B	T.106 C	C	50.0	45.0
3	1B	T.106 D	D	48.5	45.0
8	1B	T.107 A	A	50.0	45.0
1	1B	T.107 C	C	50.0	45.0
1	1B	T.108 A	A	53.5	45.0
1	1B	T.108 C	C	49.7	45.0
2	1B	T.109 A	A	47.3	45.0
2	1B	T.110 A	A	53.8	45.0

1B: 202
Grand total: 211

Red dash line indicates extent of amendments to address RF1 0723 dated 08 JUNE 2022

NON RFI RELATED CHANGES

STATUTORY CHANGES

DESIGN CHANGES

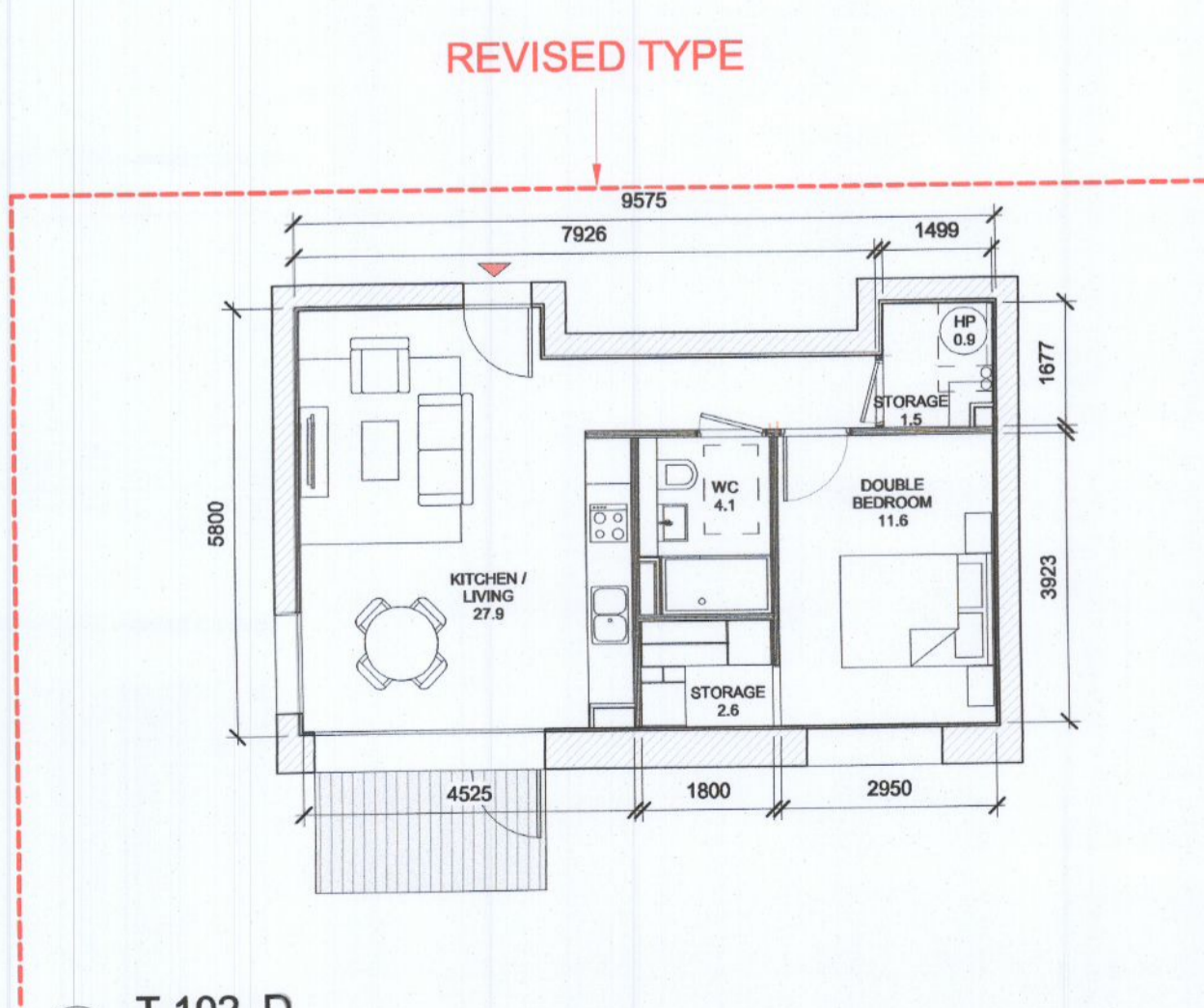
GENERAL NOTES:

O1 ALL INTERNAL APARTMENT LAYOUTS HAVE BEEN AMENDED DUE TO DESIGN DEVELOPMENT AND CO-ORDINATION WITH OTHER DISCIPLINES. THE INDIVIDUAL UNITS MAINTAIN THE SPACE REQUIREMENT GUIDELINES AS PER THE ORIGINAL PLANNING SUBMISSION

O2 MINOR AMENDMENTS TO M&E AND SE LAYOUTS DUE TO DESIGN DEVELOPMENT & TO ACCOMMODATE COMPLIANCE WITH STATUTORY REQUIREMENTS

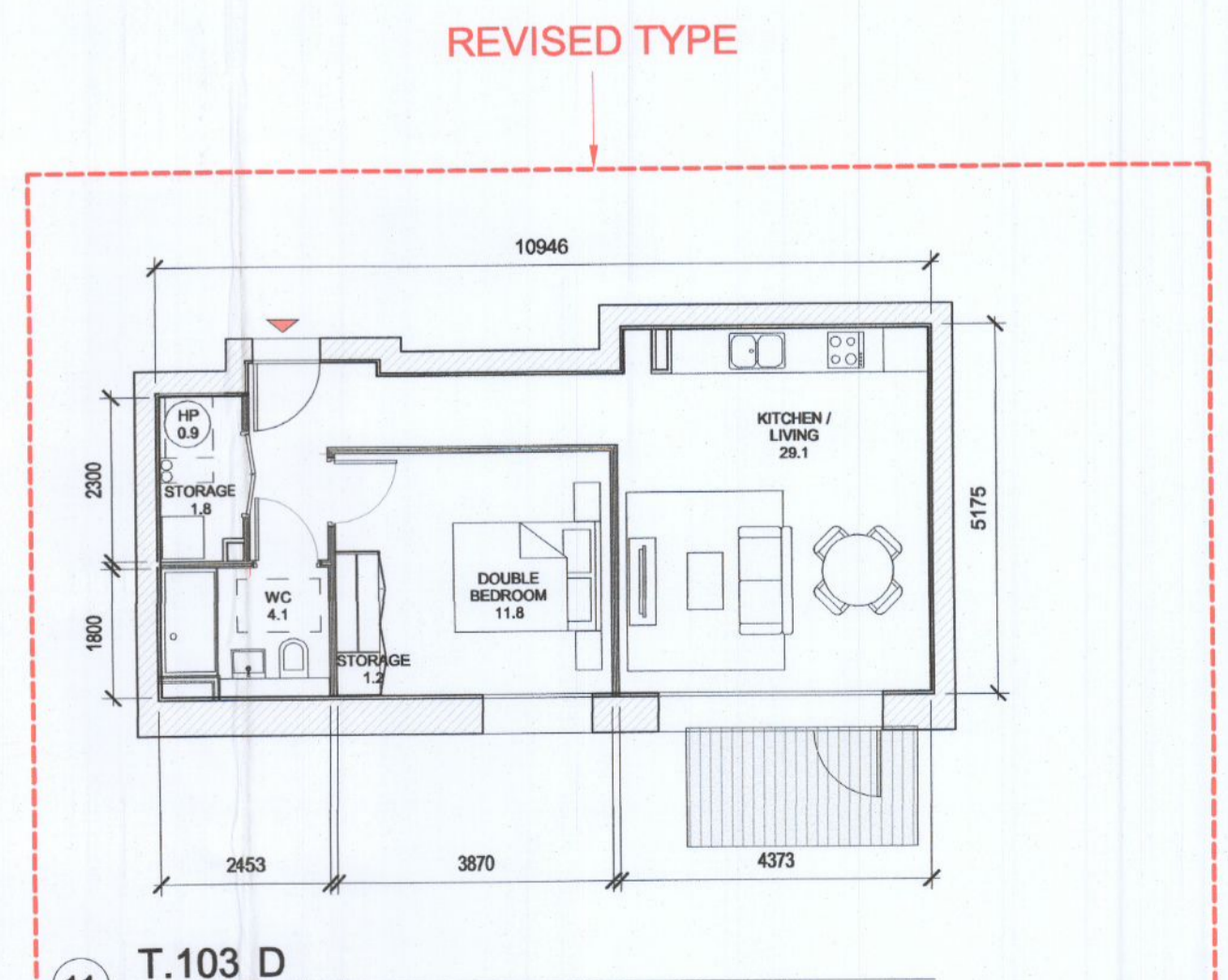
O3 REDUCED PARAPET HEIGHT & FALL ARREST SYSTEM INTRODUCED TO BLOCKS A,C,D AND RESIDENT PAVILLION BUILDINGS DUE TO MAINTENANCE. PARAPET HEIGHT OF TOWER ELEMENT OF BLOCK C1 RETAINED AS PER ORIGINAL PLANNING APPLICATION

HJL Drawing Number on previously lodged planning application SD222A/0005
ADC3-HJL-ACD-ZZ-DR-A-P8002 Revision (P)



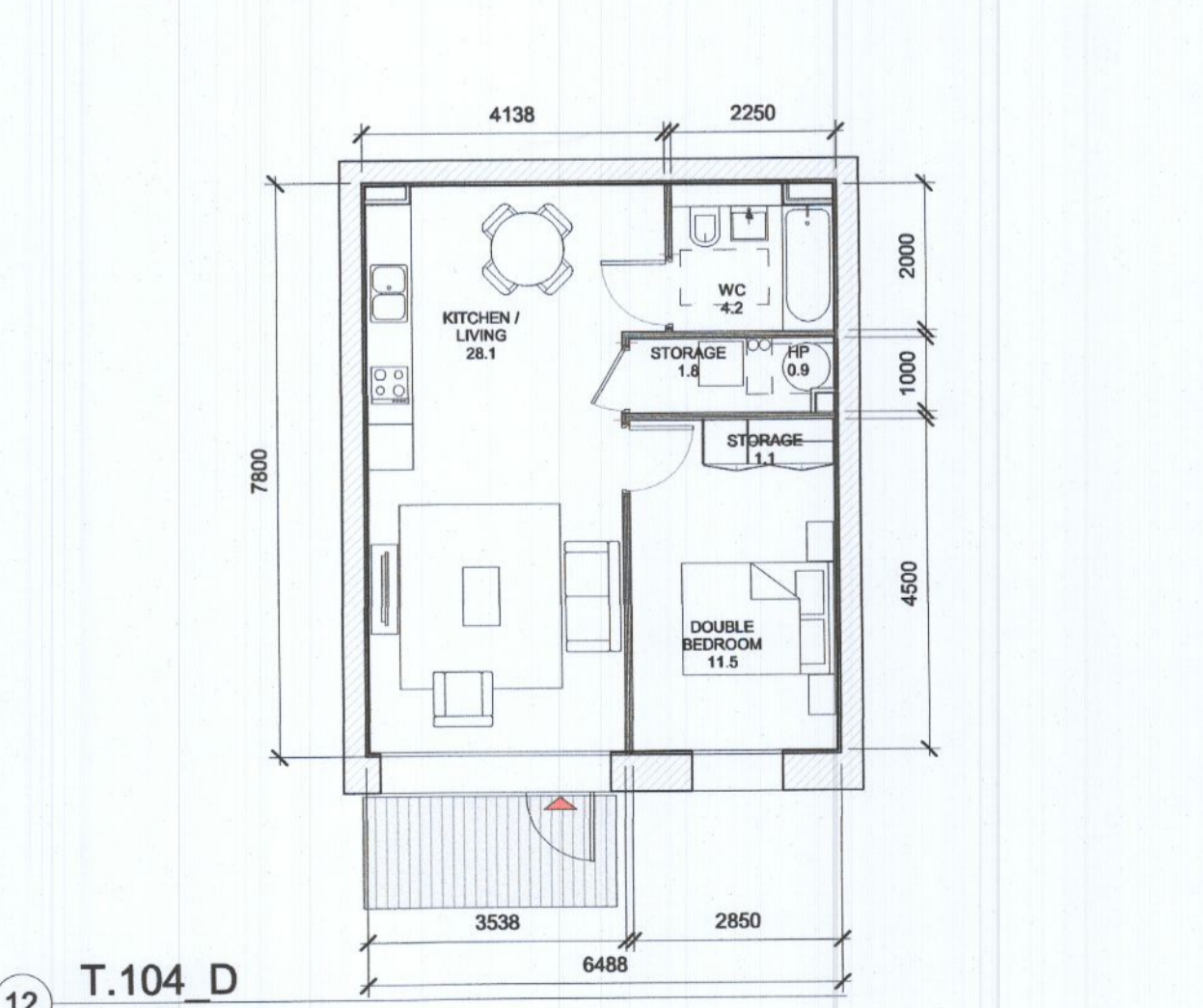
10 T.102 D 1:100

T.102_D SPACE REQUIREMENTS												
Apartment Area	Required Apartment Area	Required Area Met	Kitchen - Living Area	Required Kitchen - Living Area	Required Area Met	Total Bedroom Area	Required Total Bedroom Area	Required Area Met	Total Storage Area	Required Total Storage Area	Required Area Met	Heat Pump Area
50.7 m ²	45.0 m ²	Yes	27.9 m ²	23.0 m ²	Yes	11.6 m ²	11.4 m ²	Yes	4.2 m ²	3.0 m ²	Yes	0.9 m ²



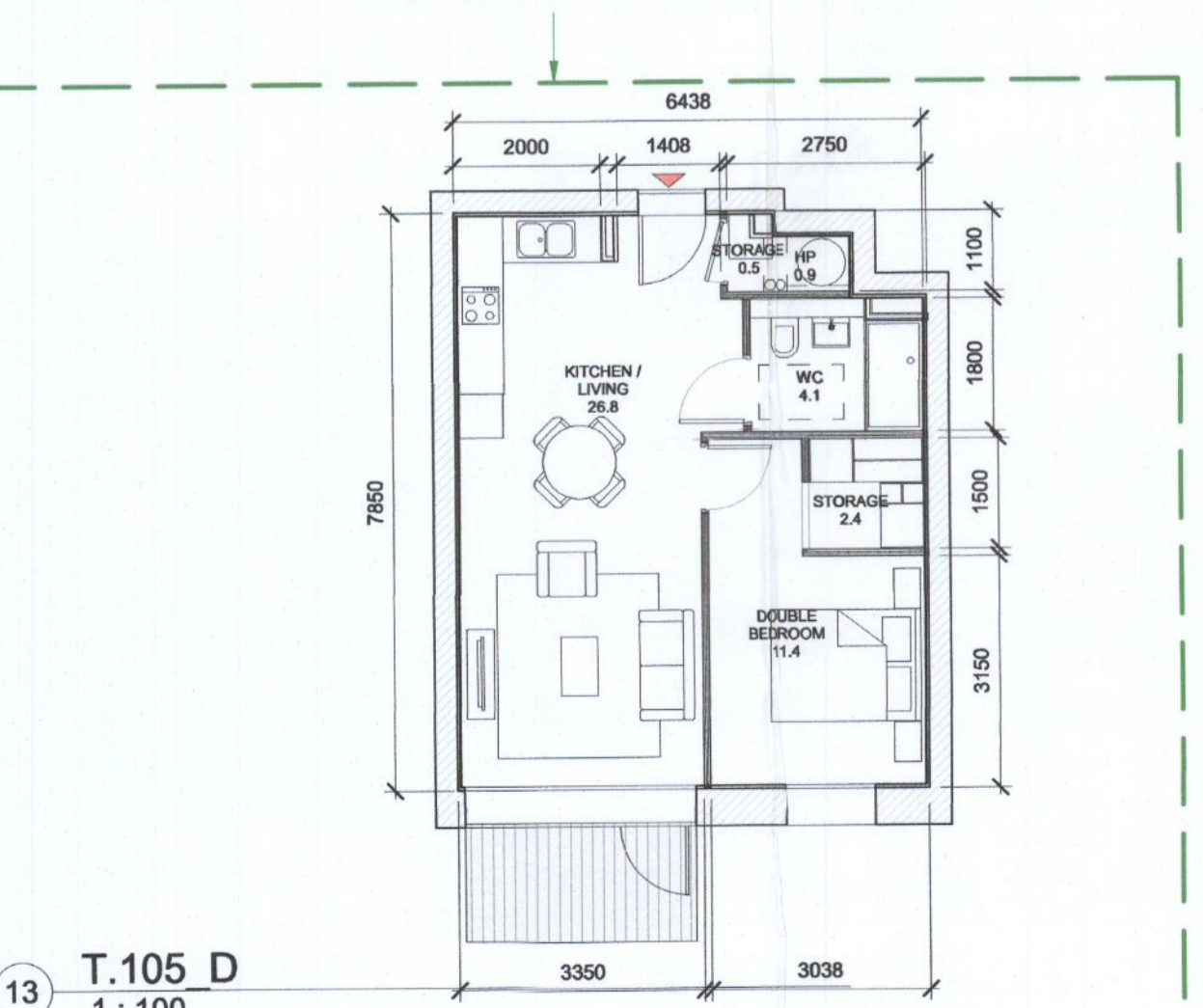
11 T.103 D 1:100

T.103_D SPACE REQUIREMENTS												
Apartment Area	Required Apartment Area	Required Area Met	Kitchen - Living Area	Required Kitchen - Living Area	Required Area Met	Total Bedroom Area	Required Total Bedroom Area	Required Area Met	Total Storage Area	Required Total Storage Area	Required Area Met	Heat Pump Area
51.0 m ²	45.0 m ²	Yes	29.1 m ²	23.0 m ²	Yes	11.6 m ²	11.4 m ²	Yes	3.0 m ²	3.0 m ²	Yes	0.9 m ²



12 T.104 D 1:100

T.104_D SPACE REQUIREMENTS												
Apartment Area	Required Apartment Area	Required Area Met	Kitchen - Living Area	Required Kitchen - Living Area	Required Area Met	Total Bedroom Area	Required Total Bedroom Area	Required Area Met	Total Storage Area	Required Total Storage Area	Required Area Met	Heat Pump Area
49.5 m ²	45.0 m ²	Yes	28.1 m ²	23.0 m ²	Yes	11.5 m ²	11.4 m ²	Yes	3.0 m ²	3.0 m ²	Yes	0.9 m ²



13 T.105 D 1:100

T.105_D SPACE REQUIREMENTS												
Apartment Area	Required Apartment Area	Required Area Met	Kitchen - Living Area	Required Kitchen - Living Area	Required Area Met	Total Bedroom Area	Required Total Bedroom Area	Required Area Met	Total Storage Area	Required Total Storage Area	Required Area Met	Heat Pump Area
48.0 m ²	45.0 m ²	Yes	26.8 m ²	23.0 m ²	Yes	11.4 m ²	11.4 m ²	Yes	3.0 m ²	3.0 m ²	Yes	0.9 m ²

STATUS CODE DESCRIPTION	ISSUED FOR FURTHER INFORMATION
P02 06/09/2022	ISSUED FOR FURTHER INFORMATION
P01 08/04/2022	ISSUED FOR PLANNING
REV DATE	DESCRIPTION

CLIENT
QUINTAIN IRELAND LTD.

PROJECT
ADAMSTOWN STATION BLOCKS ACD

DRAWING
**APARTMENT TYPES Sheet 2
1 & 2B Apartments**

PROJECT NUMBER
860747

DATE
08/04/22

SCALE@ A1:
As indicated

DRAWN/CHECKED:
SEN/RJ

STATUS CODE: DRAWING NUMBER REVISION
A1 ADC3-HJL-ACD-ZZ-DR-A-P8002 P02

Henry J Lyons

Architecture + Interiors
henryjlyons.com

+353 1 888 3333
info@henryjlyons.com

51-54 Pearse Street
Dublin D02 KA66