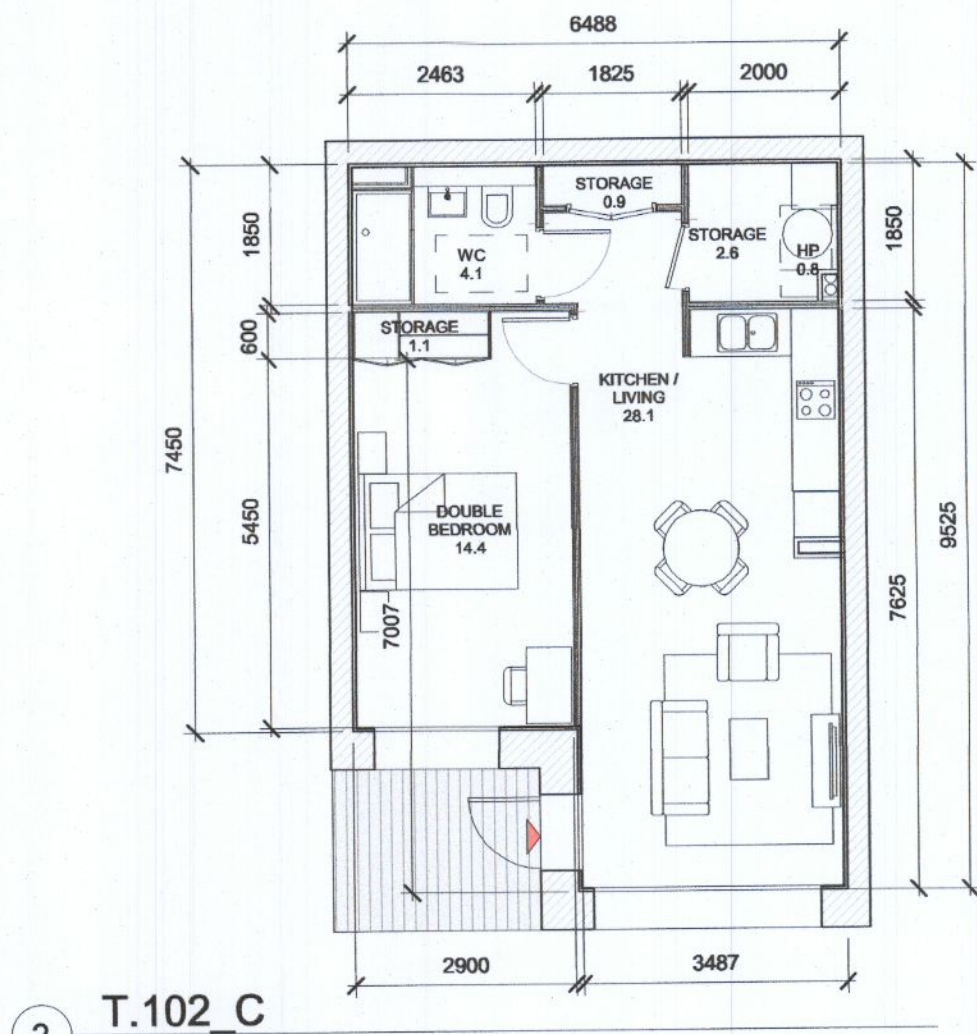


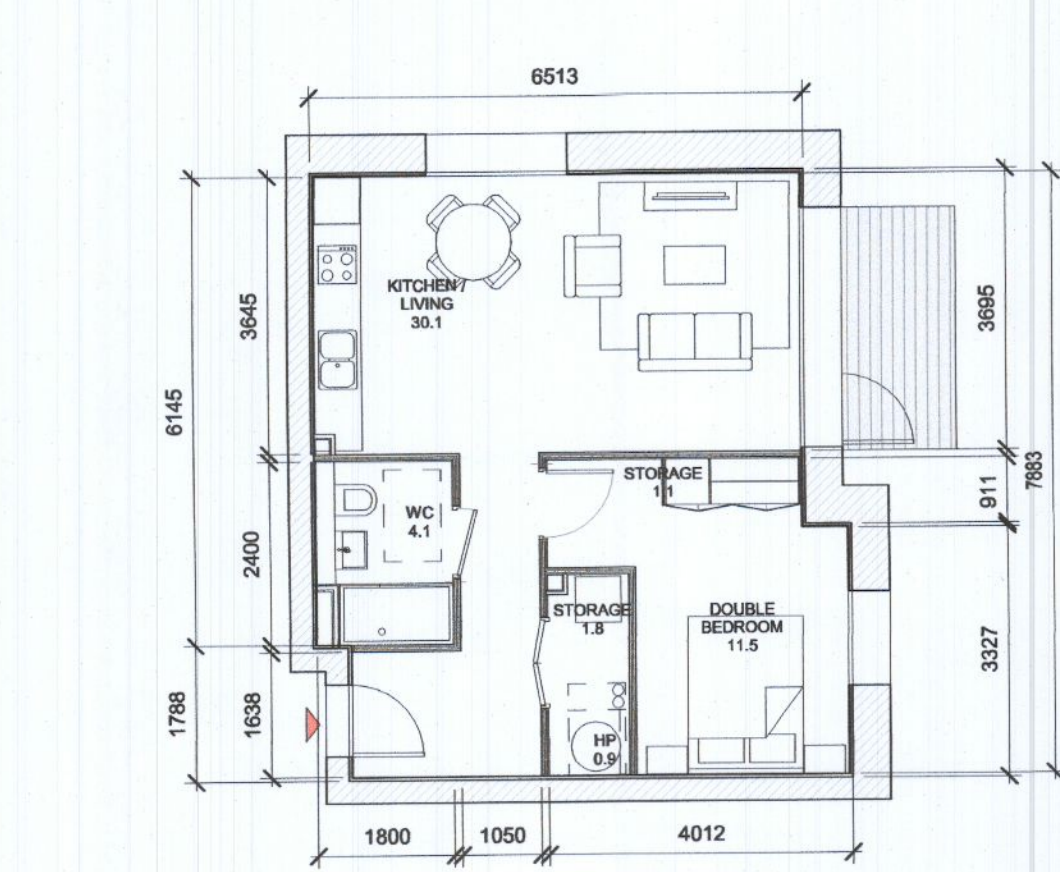
1 T.101 C  
1:100

T.101_C SPACE REQUIREMENTS									
Apartment Area	Required Apartment Area	Required Area Met	Kitchen - Living Area	Required Kitchen - Living Area	Required Area Met	Total Bedroom Area	Required Total Bedroom Area	Required Area Met	Heat Pump Area
49.5 m <sup>2</sup>	45.0 m <sup>2</sup>	Yes	28.2 m <sup>2</sup>	23.0 m <sup>2</sup>	Yes	11.4 m <sup>2</sup>	11.4 m <sup>2</sup>	Yes	0.9 m <sup>2</sup>



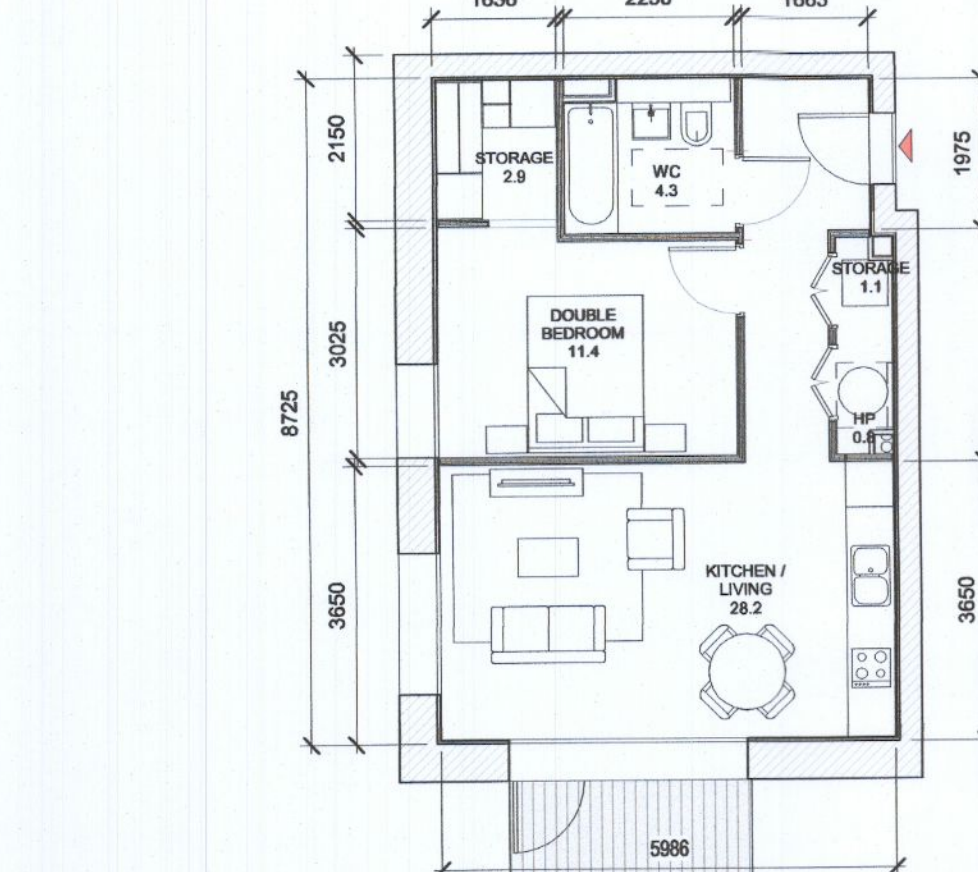
2 T.102 C  
1:100

T.102_C SPACE REQUIREMENTS									
Apartment Area	Required Apartment Area	Required Area Met	Kitchen - Living Area	Required Kitchen - Living Area	Required Area Met	Total Bedroom Area	Required Total Bedroom Area	Required Area Met	Heat Pump Area
54.3 m <sup>2</sup>	45.0 m <sup>2</sup>	Yes	28.1 m <sup>2</sup>	23.0 m <sup>2</sup>	Yes	14.3 m <sup>2</sup>	11.4 m <sup>2</sup>	Yes	0.9 m <sup>2</sup>



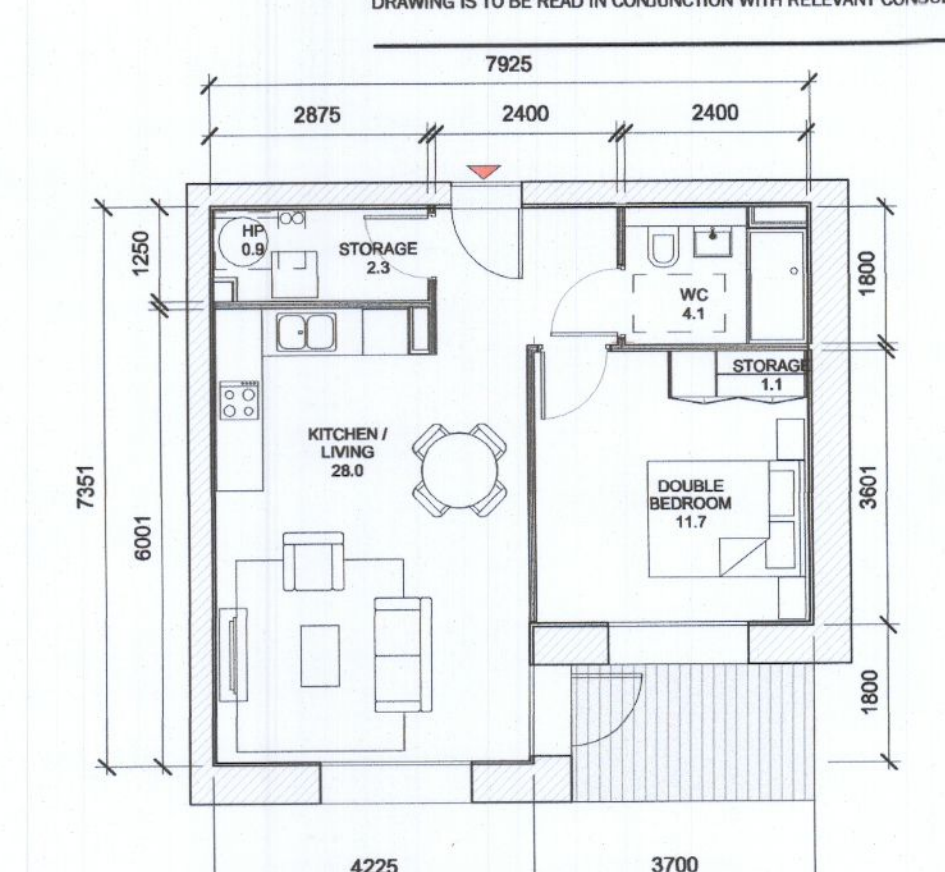
3 T.103 C  
1:100

T.103_C SPACE REQUIREMENTS									
Apartment Area	Required Apartment Area	Required Area Met	Kitchen - Living Area	Required Kitchen - Living Area	Required Area Met	Total Bedroom Area	Required Total Bedroom Area	Required Area Met	Heat Pump Area
49.7 m <sup>2</sup>	45.0 m <sup>2</sup>	Yes	30.2 m <sup>2</sup>	23.0 m <sup>2</sup>	Yes	11.5 m <sup>2</sup>	11.4 m <sup>2</sup>	Yes	0.9 m <sup>2</sup>



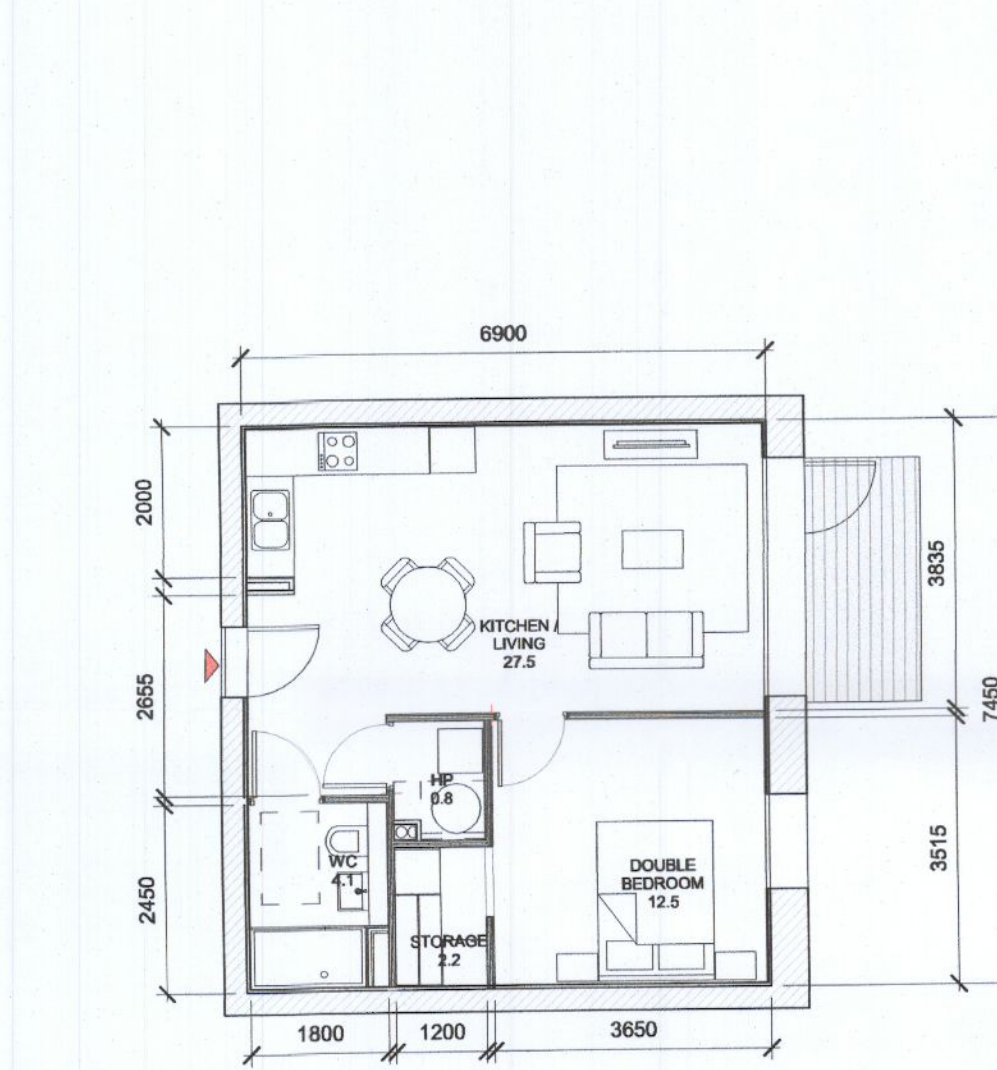
4 T.104 C  
1:100

T.104_C SPACE REQUIREMENTS									
Apartment Area	Required Apartment Area	Required Area Met	Kitchen - Living Area	Required Kitchen - Living Area	Required Area Met	Total Bedroom Area	Required Total Bedroom Area	Required Area Met	Heat Pump Area
51.0 m <sup>2</sup>	45.0 m <sup>2</sup>	Yes	28.2 m <sup>2</sup>	23.0 m <sup>2</sup>	Yes	11.4 m <sup>2</sup>	11.4 m <sup>2</sup>	Yes	0.9 m <sup>2</sup>



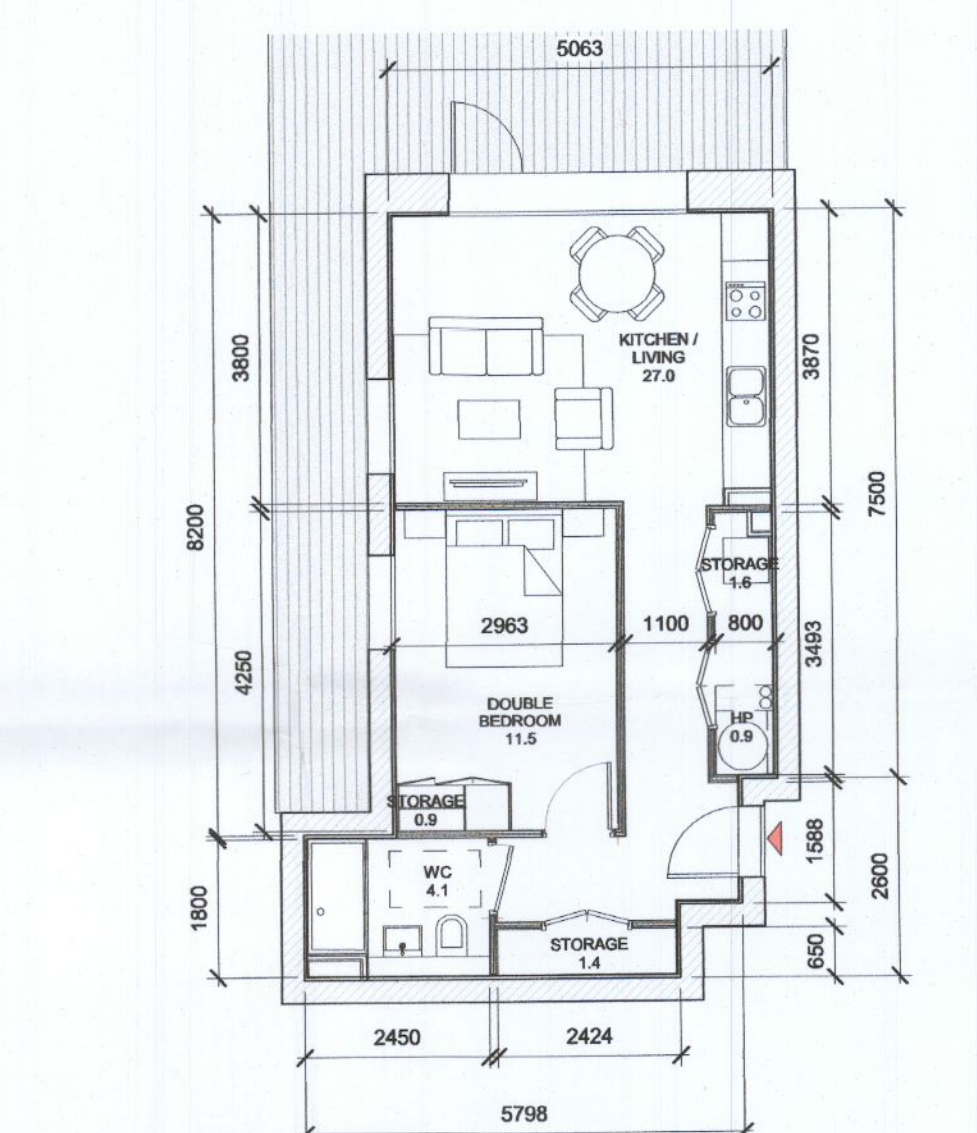
5 T.105 C  
1:100

T.105_C SPACE REQUIREMENTS									
Apartment Area	Required Apartment Area	Required Area Met	Kitchen - Living Area	Required Kitchen - Living Area	Required Area Met	Total Bedroom Area	Required Total Bedroom Area	Required Area Met	Heat Pump Area
50.1 m <sup>2</sup>	45.0 m <sup>2</sup>	Yes	28.0 m <sup>2</sup>	23.0 m <sup>2</sup>	Yes	11.7 m <sup>2</sup>	11.4 m <sup>2</sup>	Yes	0.9 m <sup>2</sup>



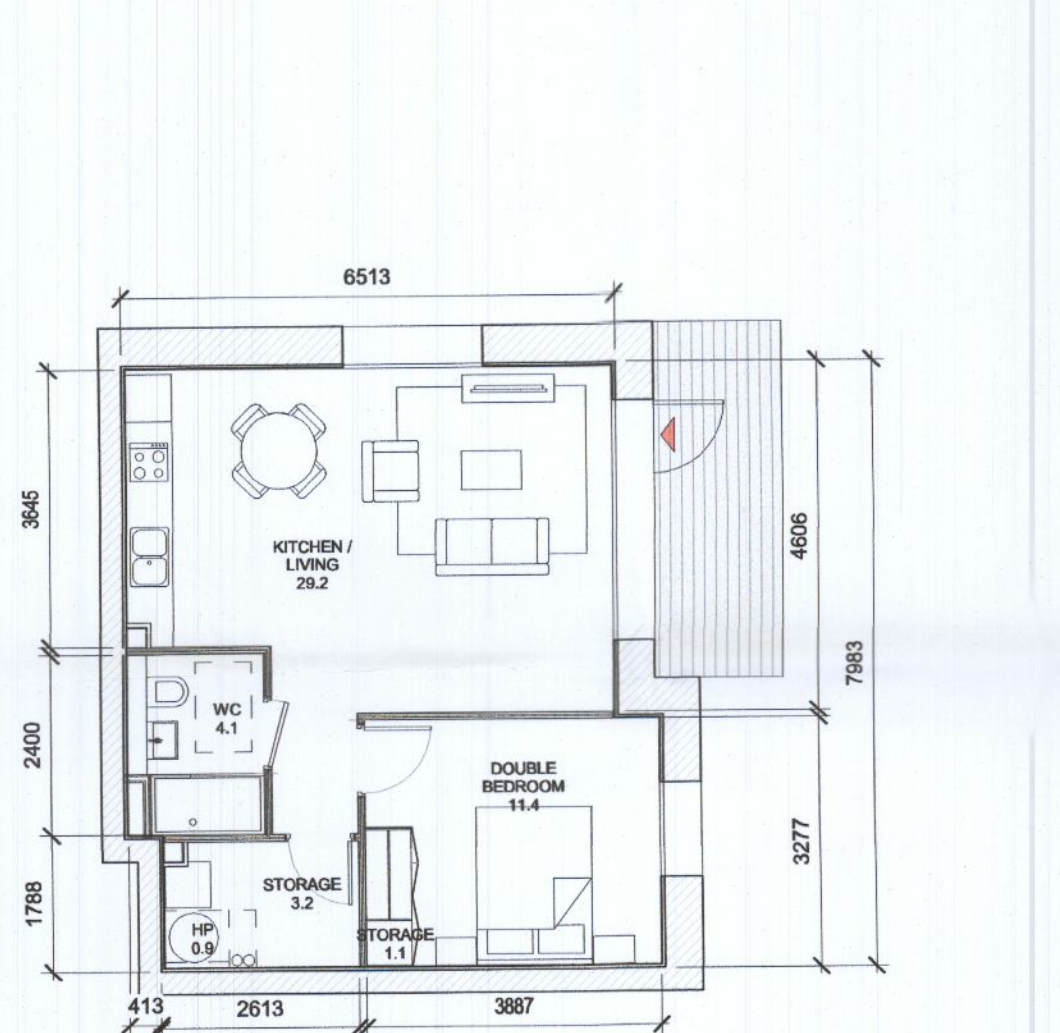
6 T.106 C  
1:100

T.106_C SPACE REQUIREMENTS									
Apartment Area	Required Apartment Area	Required Area Met	Kitchen - Living Area	Required Kitchen - Living Area	Required Area Met	Total Bedroom Area	Required Total Bedroom Area	Required Area Met	Heat Pump Area
50.0 m <sup>2</sup>	45.0 m <sup>2</sup>	Yes	27.5 m <sup>2</sup>	23.0 m <sup>2</sup>	Yes	12.5 m <sup>2</sup>	11.4 m <sup>2</sup>	Yes	1.0 m <sup>2</sup>



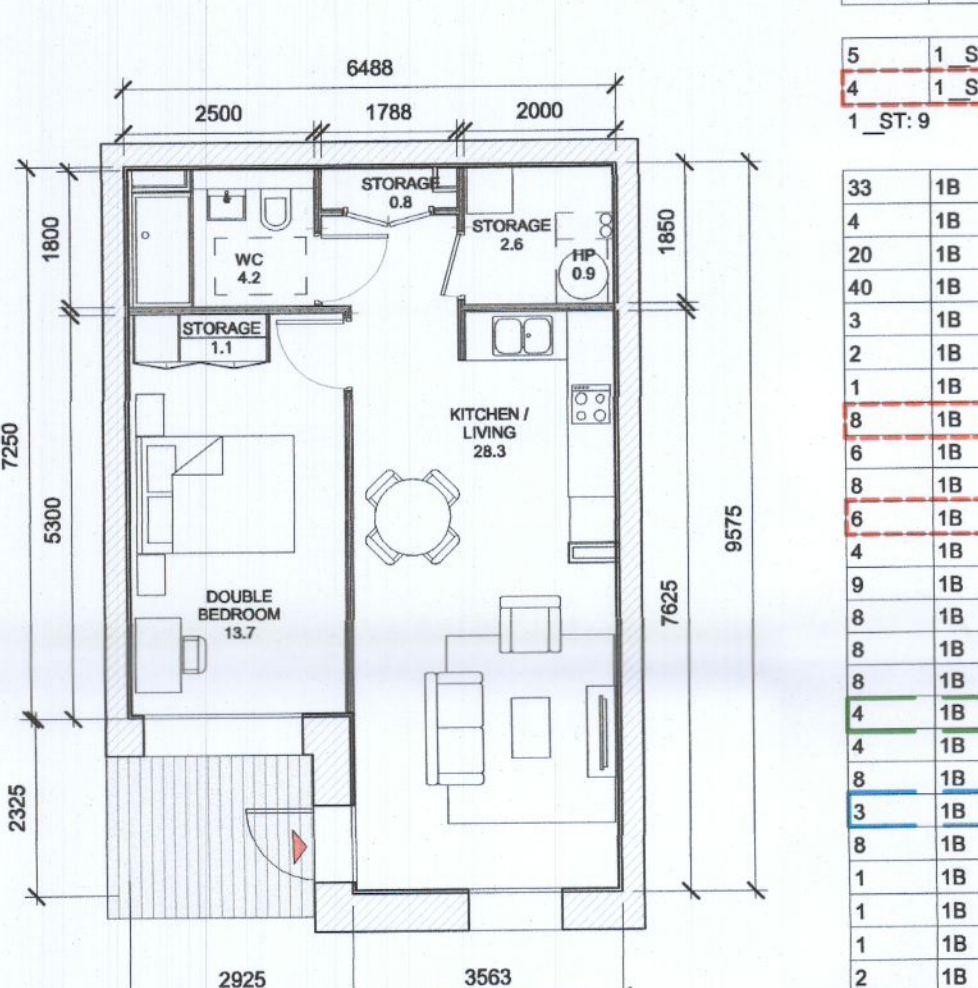
7 T.107 C  
1:100

T.107_C SPACE REQUIREMENTS									
Apartment Area	Required Apartment Area	Required Area Met	Kitchen - Living Area	Required Kitchen - Living Area	Required Area Met	Total Bedroom Area	Required Total Bedroom Area	Required Area Met	Heat Pump Area
50.0 m <sup>2</sup>	45.0 m <sup>2</sup>	Yes	27.0 m <sup>2</sup>	23.0 m <sup>2</sup>	Yes	11.5 m <sup>2</sup>	11.4 m <sup>2</sup>	Yes	0.9 m <sup>2</sup>



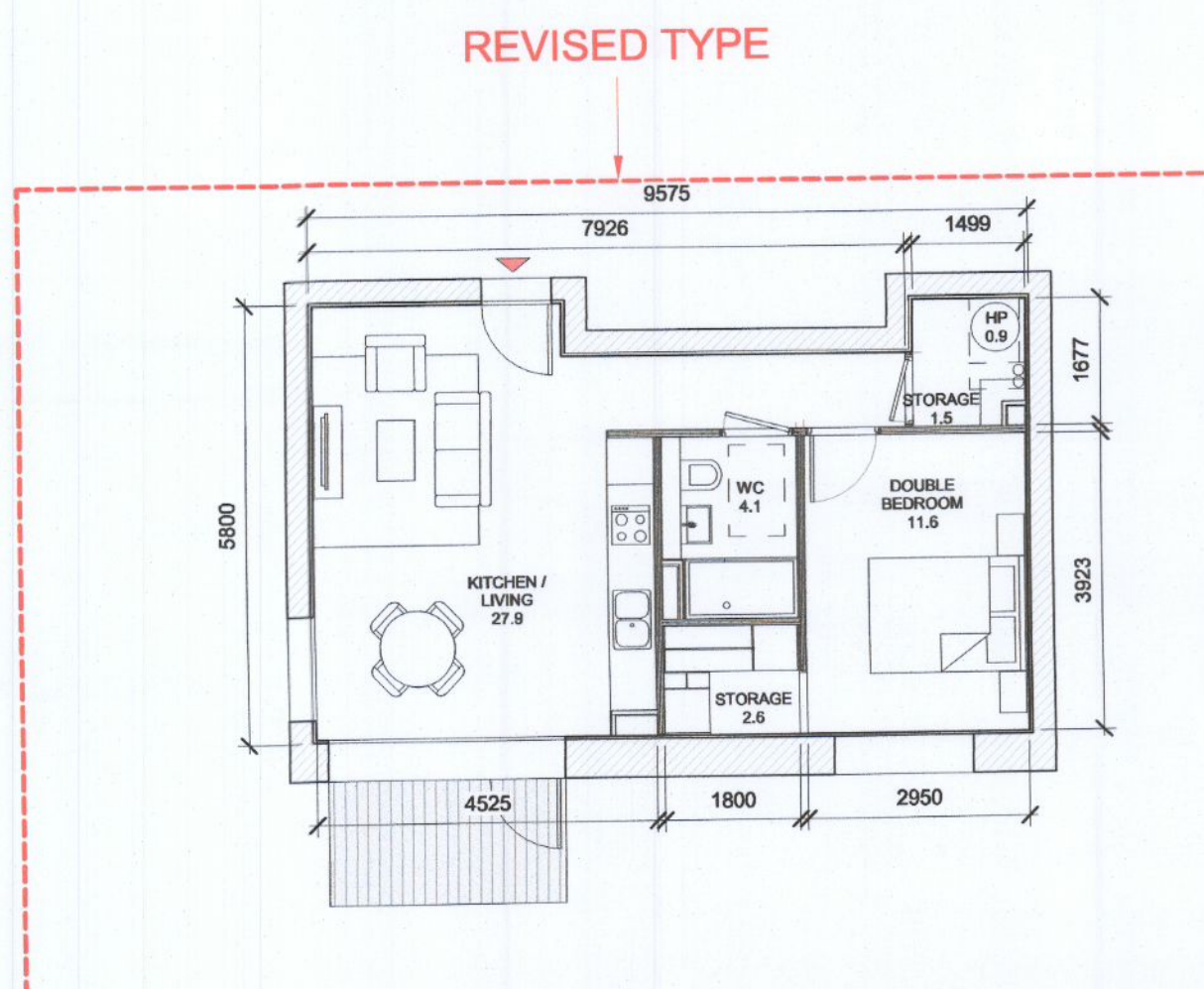
8 T.108 C  
1:100

T.108_C SPACE REQUIREMENTS									
Apartment Area	Required Apartment Area	Required Area Met	Kitchen - Living Area	Required Kitchen - Living Area	Required Area Met	Total Bedroom Area	Required Total Bedroom Area	Required Area Met	Heat Pump Area
49.7 m <sup>2</sup>	45.0 m <sup>2</sup>	Yes	29.3 m <sup>2</sup>	23.0 m <sup>2</sup>	Yes	11.4 m <sup>2</sup>	11.4 m <sup>2</sup>	Yes	0.9 m <sup>2</sup>



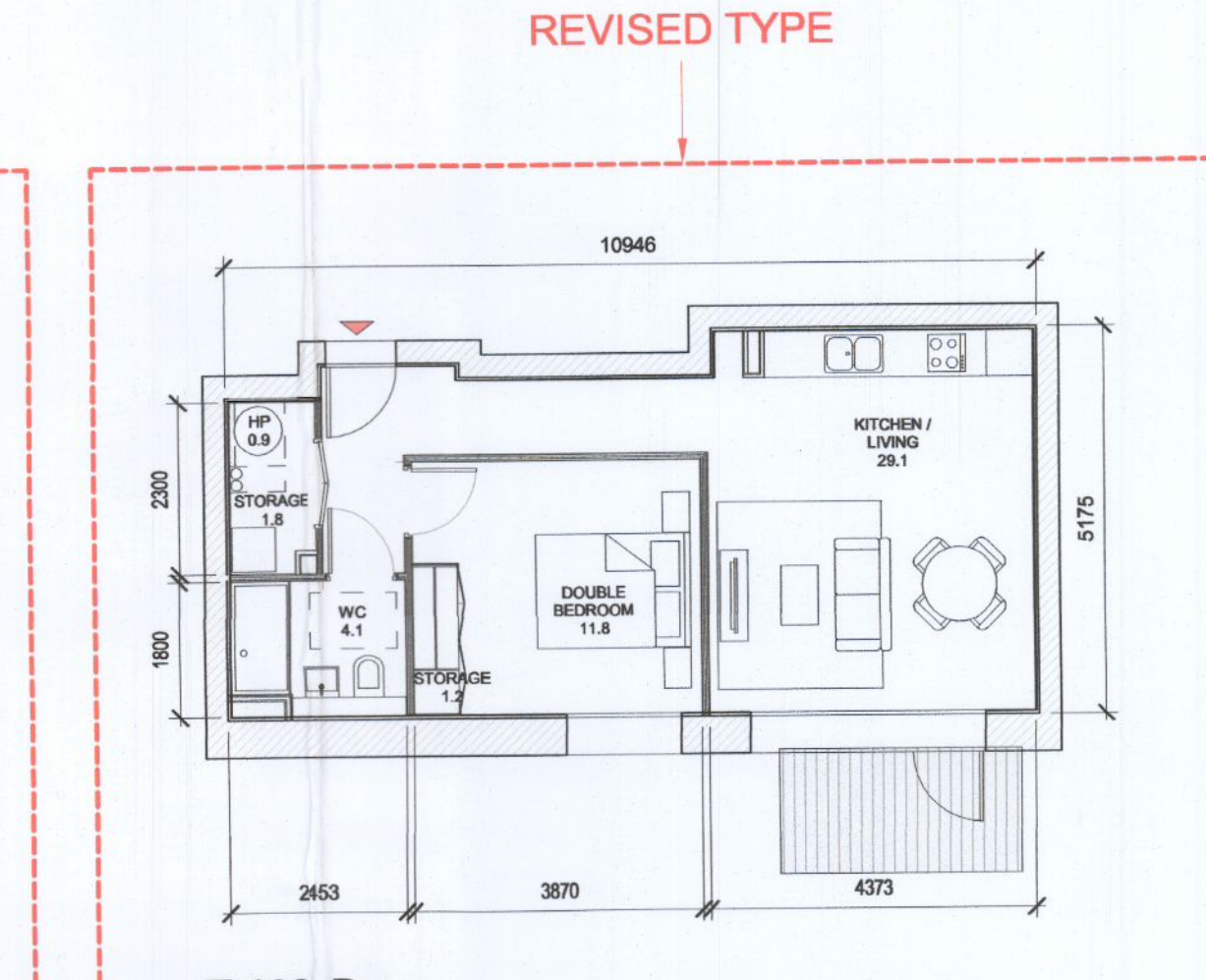
9 T.101 D  
1:100

T.101_D SPACE REQUIREMENTS									
Apartment Area	Required Apartment Area	Required Area Met	Kitchen - Living Area	Required Kitchen - Living Area	Required Area Met	Total Bedroom Area	Required Total Bedroom Area	Required Area Met	Heat Pump Area
53.7 m <sup>2</sup>	45.0 m <sup>2</sup>	Yes	28.3 m <sup>2</sup>	23.0 m <sup>2</sup>	Yes	13.7 m <sup>2</sup>	11.4 m <sup>2</sup>	Yes	0.9 m <sup>2</sup>



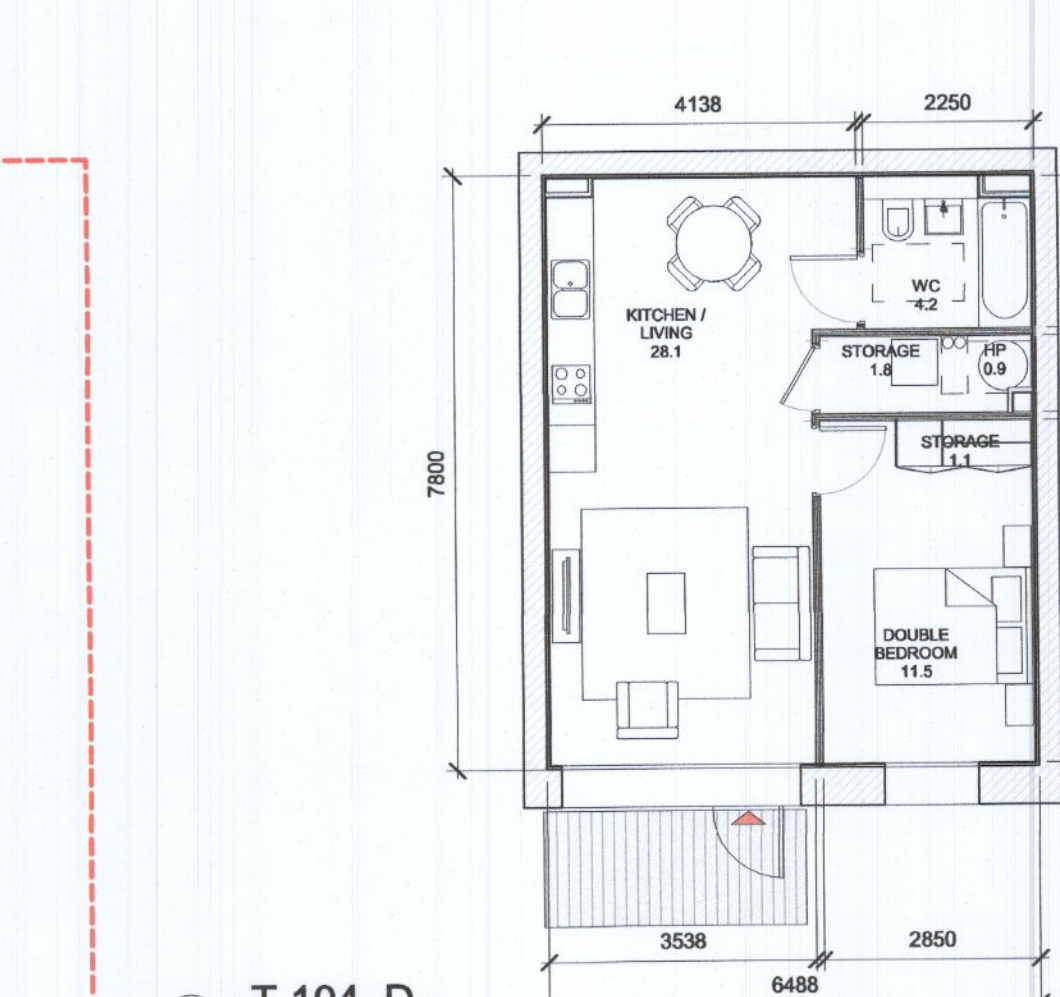
10 T.102 D  
1:100

T.102_D SPACE REQUIREMENTS									
Apartment Area	Required Apartment Area	Required Area Met	Kitchen - Living Area	Required Kitchen - Living Area	Required Area Met	Total Bedroom Area	Required Total Bedroom Area	Required Area Met	Heat Pump Area
50.7 m <sup>2</sup>	45.0 m <sup>2</sup>	Yes	27.9 m <sup>2</sup>	23.0 m <sup>2</sup>	Yes	11.6 m <sup>2</sup>	11.4 m <sup>2</sup>	Yes	0.9 m <sup>2</sup>



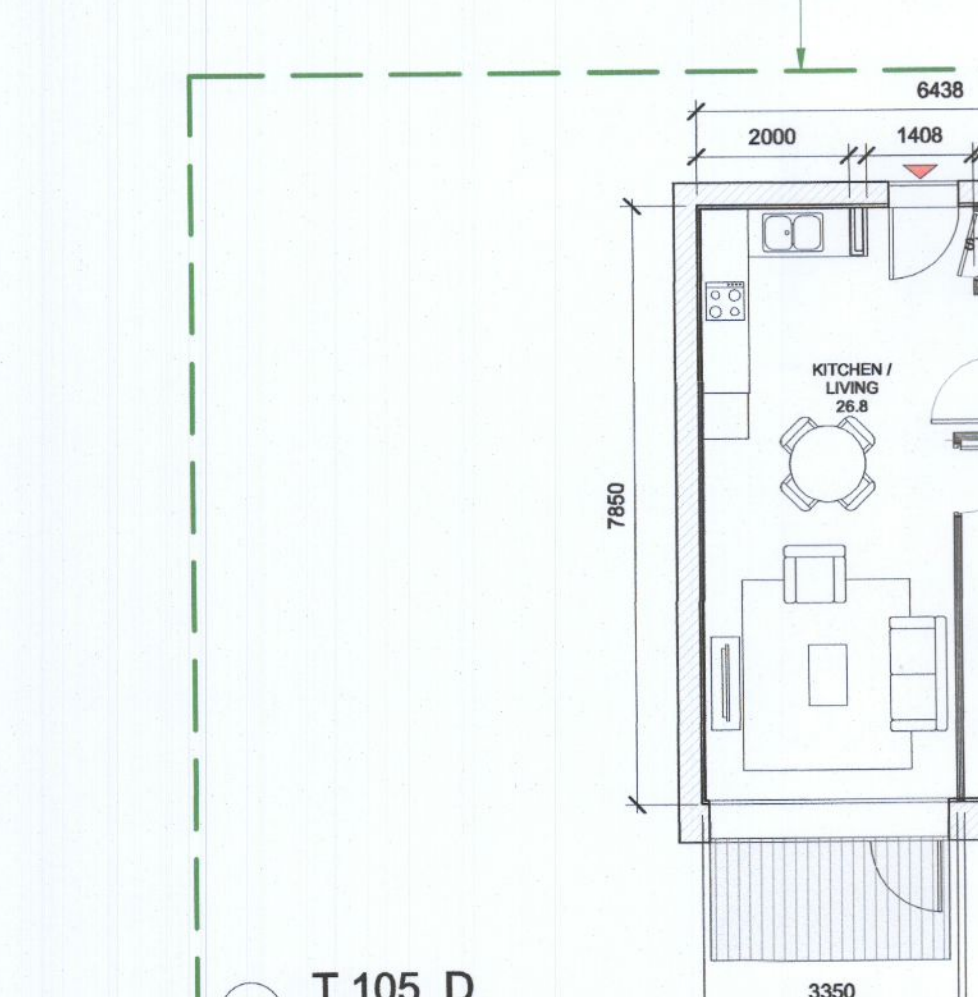
11 T.103 D  
1:100

T.103_D SPACE REQUIREMENTS									
Apartment Area	Required Apartment Area	Required Area Met	Kitchen - Living Area	Required Kitchen - Living Area	Required Area Met	Total Bedroom Area	Required Total Bedroom Area	Required Area Met	Heat Pump Area
51.0 m <sup>2</sup>	45.0 m <sup>2</sup>	Yes	29.1 m <sup>2</sup>	23.0 m <sup>2</sup>	Yes	11.8 m <sup>2</sup>	11.4 m <sup>2</sup>	Yes	0.9 m <sup>2</sup>



12 T.104 D  
1:100

T.104_D SPACE REQUIREMENTS									
Apartment Area	Required Apartment Area	Required Area Met	Kitchen - Living Area	Required Kitchen - Living Area	Required Area Met	Total Bedroom Area	Required Total Bedroom Area	Required Area Met	Heat Pump Area
49.5 m <sup>2</sup>	45.0 m <sup>2</sup>	Yes	28.1 m <sup>2</sup>	23.0 m <sup>2</sup>	Yes	11.5 m <sup>2</sup>	11.4 m <sup>2</sup>	Yes	0.9 m <sup>2</sup>



13 T.105 D  
1:100

T.105_D SPACE REQUIREMENTS									
Apartment Area	Required Apartment Area	Required Area Met	Kitchen - Living Area	Required Kitchen - Living Area	Required Area Met	Total Bedroom Area	Required Total Bedroom Area	Required Area Met	Heat Pump Area
48.0 m <sup>2</sup>	45.0 m <sup>2</sup>	Yes	26.8 m <sup>2</sup>	23.0 m <sup>2</sup>	Yes	11.4 m <sup>2</sup>	11.4 m <sup>2</sup>	Yes	0.9 m <sup>2</sup>

APARTMENT TYPES 1B					
Count	Unit Type	Type Name	Block	Area sqm	Min. Area
5	1 ST	T.101 D	D	39.8	37.0
4	1 ST	T.102 D	D	41.8	37.0

Count	Unit Type	Type Name	Block	Area sqm	Min. Area
33	1B	T.101 A	A	50.0	45.0
4	1B	T.101 C	C	49.5	45.0
20	1B	T.101 D	D	49.5	45.0
40	1B	T.101 C	D	49.5	45.0
3	1B	T.101 D	D	53.7	45.0
2	1B	T.102 A	A	50.0	45.0
1	1B	T.102 C	C	54.3	45.0
8	1B	T.102 D	D	50.7	45.0
6	1B	T.103 A	A	48.2	45.0
8	1B	T.103 C	C	49.7	45.0
6	1B	T.103 D	D	51.0	45.0
4	1B	T.104 A	A	50.0	45.0
9	1B	T.104 C	C	51.0	45.0
8	1B	T.104 D	D	49.5	45.0
8	1B	T.105 A	A	50.2	45.0
8	1B	T.105 C	C	50.1	45.0
4	1B	T.105 D	D	48.0	45.0
4	1B	T.106 A	A	48.4	45.0
8	1B	T.106 C	C	50.0	45.0
3	1B	T.106 D	D	48.5	45.0
8	1B	T.107 A	A	50.0	45.0
1	1B	T.107 C	C	50.0	45.0
1	1B	T.108 A	A	53.5	45.0
1	1B	T.108 C	C	49.7	45.0
2	1B	T.109 A	A	47.3	45.0
2	1B	T.110 A	A	53.8	45.0

18\_202  
 Grand total: 211  
 Red dash line indicates extent of amendments to address RFI 0723 dated 08 JUNE 2022

- NON RFI RELATED CHANGES
- STATUTORY CHANGES
- DESIGN CHANGES

GENERAL NOTES:  
 O1 ALL INTERNAL APARTMENT LAYOUTS HAVE BEEN AMENDED DUE TO DESIGN DEVELOPMENT AND GO-ORDINATION WITH OTHER DISCIPLINES. THE INDIVIDUAL UNITS MAINTAIN THE SPACE REQUIREMENT GUIDELINES AS PER THE ORIGINAL PLANNING SUBMISSION  
 O2 MINOR AMENDMENTS TO M&E AND SE LAYOUTS DUE TO DESIGN DEVELOPMENT & TO ACCOMMODATE COMPLIANCE WITH STATUTORY REQUIREMENTS  
 O3 REDUCED PARAPET HEIGHT & FALL ARREST SYSTEM INTRODUCED TO BLOCKS A,C,D AND RESIDENT PAVILLION BUILDINGS DUE TO MAINTENANCE. PARAPET HEIGHT OF TOWER ELEMENT OF BLOCK C1 RETAINED AS PER ORIGINAL PLANNING APPLICATION

HJL Drawing Number on previously lodged planning application: SDZ22A/0005

ADC3-HJL-ACD-ZZ-DR-A-P8002 Revision (PO1)

PGZ	DATE	ISSUED FOR FURTHER INFORMATION	RJ	SEN
P01	06/04/2022	ISSUED FOR PLANNING	RJ	FM
REV	DATE	DESCRIPTION	CHK	DRN

STATUS CODE DESCRIPTION  
**ISSUED FOR FURTHER INFORMATION**

CLIENT  
**QUINTAIN IRELAND LTD.**

PROJECT  
**ADAMSTOWN STATION BLOCKS ACD**

DRAWING  
**APARTMENT TYPES Sheet 2  
 1 & 2B Apartments**

PROJECT NUMBER  
 850747

DATE  
 08/04/22

SCALE@ A1:  
 As indicated

DRAWN/CHECKED:  
 SEN/RJ

STATUS CODE: DRAWING NUMBER REVISION  
 A1 ADC3-HJL-ACD-ZZ-DR-A-P8002 P02